

ULTRAFIT™

SWR Systems
With World Class Seals

Prince Piping Systems has collaborated with a renowned company who manufacture triple-lip sealing rubber seals known as Forsheda 582 Dinlock. These seals along with Ultrafit SWR premium quality UPVC material gives a long lasting performance. Ultrafit SWR with World Class Seals are used in building drainage of residential, commercial, industrial & public complexes.



*ZERO DEFECT MANUFACTURING PROCESS

Pipes as per
IS:13592



Fittings as per
IS:14735



PIPING SYSTEMS RAHE
LEAK-FREE WITH
WORLD-CLASS SEALS.



► SPECIFICATIONS

	Fittings	Pipes
Material	Unplasticized Polyvinyl Chloride (UPVC)	Unplasticized Polyvinyl Chloride (UPVC)
Colour	Light Grey	Light Grey
Reference Standards	IS 14735 : 1999	IS 13592 : 2013
Working pressure (kg/cm ²)	Non Pressure Application	Non Pressure Application
End Connections	Rubber Ring & Solvent Joint	Rubber Ring & Solvent Joint
Variants		Type 'A' & Type 'B'



► PRODUCT NAMES / RANGE

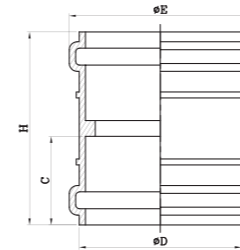
(All dimensions are in mm)

Dimensions for Ultrafit pipe.

Pipe Size (mm)	Nominal Outside Diameter (mm)	Mean Outside Diameter (mm)		Wall Thickness (mm)			
				Type "A"		Type "B"	
		Minimum	Maximum	Minimum	Maximum	Minimum	Maximum
40	40.0	40.00	40.30	1.80	2.20	3.20	3.80
50	50.0	50.00	50.30	1.80	2.20	3.20	3.80
63	63.0	63.00	63.30	1.80	2.20	3.20	3.80
75*	75.0	75.00	75.30	1.80	2.20	3.20	3.80
90	90.0	90.00	90.30	1.90	2.30	3.20	3.80
110*	110.0	110.00	110.40	2.20	2.70	3.20	3.80
160	160.0	160.00	160.50	3.20	3.80	4.00	4.60

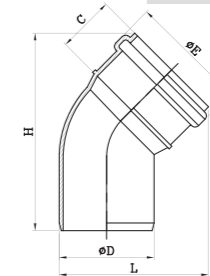
*Only available with Trelleborg-Forshedda Seals.

COUPLER (RUBBER RING JOINT-ISI)



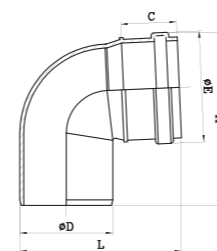
Size	C	ØD	E	H
75mm	52.00	82.00	90.20	112.00
110mm	65.00	118.00	126.50	137.00
160mm	82.00	168.00	180.20	170.00

BEND 45° (RUBBER RING JOINT-ISI)



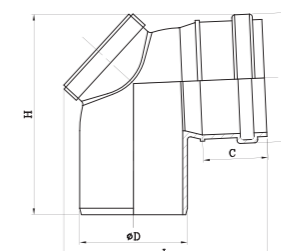
Size	C	ØD	ØE	H	L
75mm	47.00	75.00	90.20	158.00	120.00
110mm	65.00	110.00	126.50	211.00	167.00
160mm	75.00	160.00	180.20	272.00	230.00

BEND 87.5° (RUBBER RING JOINT-ISI)



Size	C	ØD	ØE	H	L
75mm	47.00	75.00	90.20	145.00	137.00
110mm	65.00	110.00	126.50	197.00	186.50
160mm	75.00	160.00	180.20	270.00	252.00

DOOR BEND 87.5° (RUBBER RING JOINT-ISI)



Size	C	ØD	ØE	H	L
75mm	47.00	75.00	90.20	145.00	157.00
110mm	65.00	110.00	126.50	197.00	200.00
160mm	75.00	160.00	180.20	270.00	258.00

SINGLE 'T'
(RUBBER RING JOINT-ISI)



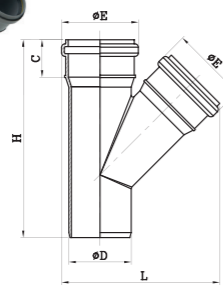
Size	C	ØD	ØE	H	L
75mm	52.00	75.00	90.20	195.00	148.00
110mm	65.00	110.00	126.50	261.00	208.00
160mm	75.00	160.00	180.20	338.00	265.00

SINGLE 'T' WITH DOOR
(RUBBER RING JOINT-ISI)



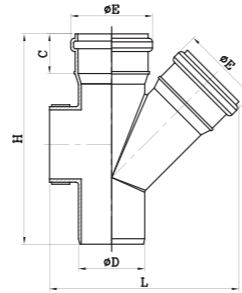
Size	C	ØD	ØE	H	L
75mm	52.00	75.00	90.20	195.00	170.00
110mm	65.00	110.00	126.50	261.00	222.00
160mm	75.00	160.00	180.20	338.00	281.00

SINGLE 'Y' 45°
(RUBBER RING JOINT-ISI)



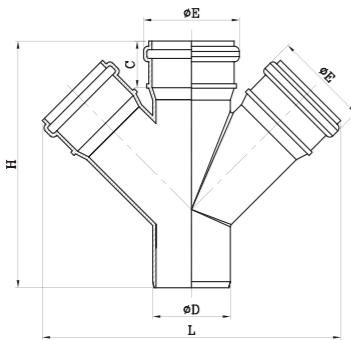
Size	C	ØD	ØE	H	L
75mm	52.00	75.00	90.20	224.00	177.00
110mm	65.00	110.00	126.50	305.00	250.00
160mm	75.00	160.00	180.20	400.00	342.00

SINGLE 'Y' 45° WITH DOOR
(RUBBER RING JOINT-ISI)



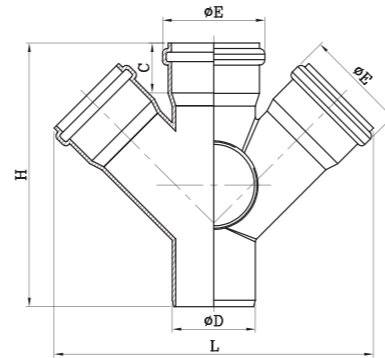
Size	C	ØD	ØE	H	L
75mm	52.00	75.00	90.20	224.00	200.00
110mm	65.00	110.00	126.50	305.00	268.00
160mm	75.00	160.00	180.20	400.00	364.00

DOUBLE 'Y' 45°
(RUBBER RING JOINT-ISI)



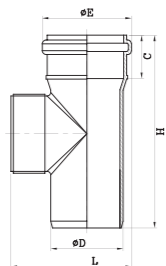
Size	C	ØD	ØE	H	L
75mm	52.00	75.00	90.20	222.00	265.00
110mm	65.00	110.00	126.50	305.00	372.00

DOUBLE 'Y' 45° WITH DOOR
(RUBBER RING JOINT-ISI)



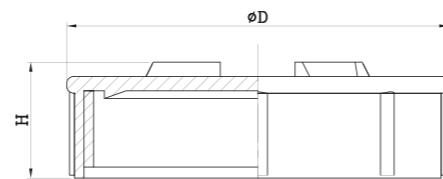
Size	C	ØD	ØE	H	L
75mm	52.00	75.00	90.20	221.00	263.00
110mm	65.00	110.00	126.50	305.00	372.00

CLEANSING PIPE
(RUBBER RING JOINT-ISI)



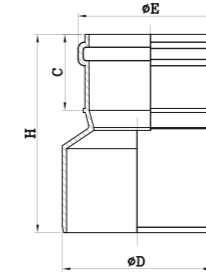
Size	C	ØD	ØE	H	L
75mm	52.00	75.00	90.20	196.00	105.00
110mm	65.00	110.00	126.50	261.00	142.00
160mm	75.00	160.00	180.20	340.00	265.00

DOOR CAP



Size	ØD	H
75mm	80.00	24.00
110mm	110.00	28.50

REDUCER
(RUBBER RING JOINT-ISI)

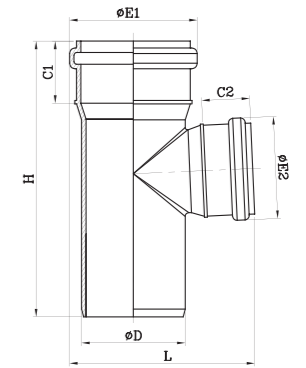


Size	C	ØD	ØE	H
110mm x 75mm	52.00	110.00	90.20	155.00
160mm x 110mm	65.00	160.00	126.50	201.00

REDUCING SINGLE 'T'
(RUBBER RING JOINT-ISI)



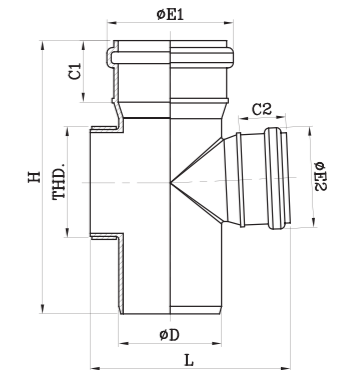
Size	C1	C2	ØD	ØE1	ØE2	H	L
160mm x 110mm	75.00	65.00	160.00	180.20	126.50	339.00	244.00



RED. SINGLE 'T' WITH DOOR
(RUBBER RING JOINT-ISI)



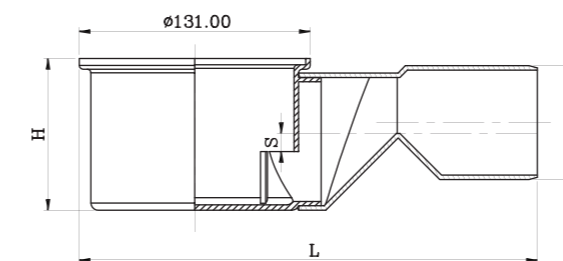
Size	C1	C2	ØD	ØE1	ØE2	H	L
160mm x 110mm	75.00	65.00	160.00	180.20	126.50	339.00	272.00



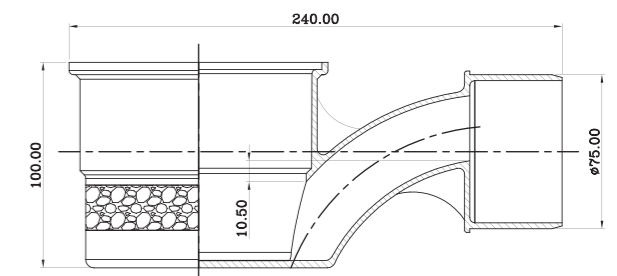
NAHANI TRAP
(SOLVENT JOINT)



Size	ØD	H	L	S
110mm x 75mm	75.00	86.00	261.00	10.00



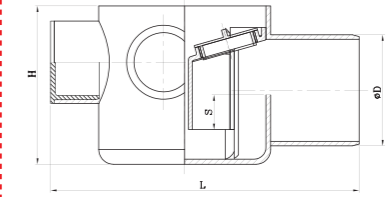
SINGLE PIECE NAHANI TRAP
110mm X 75mm
(SOLVENT JOINT)



MULTI FLOOR TRAP
(SOLVENT JOINT)



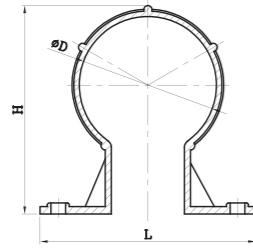
Size	ØD	H	L	S
4"	75.00	104.00	194.00	23.00



PIPE CLIP



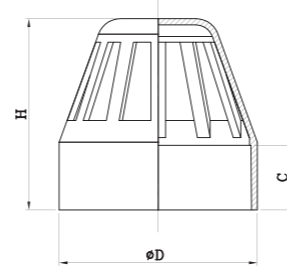
Size	ØD	H	L
75mm	75.00	115.00	120.00
110mm	110.00	151.00	150.00
160mm	160.00	199.00	216.00



VENT COWL (SOLVENT JOINT-ISI)



Size	C	ØD	H
75mm	25.00	82.00	74.00
110mm	27.00	117.00	91.00

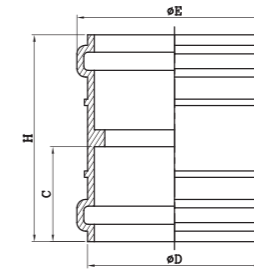


► SWR DRG

COUPLER (RUBBER RING JOINT-ISI)



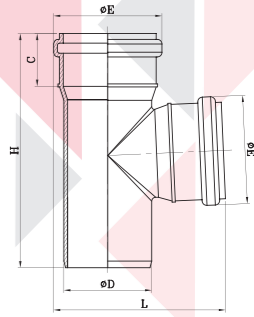
Size	C	ØD	ØE	H
75mm	49.00	81.50	89.60	101.00
110mm	51.00	96.20	104.60	130.00
160mm	67.00	116.60	125.60	137.00



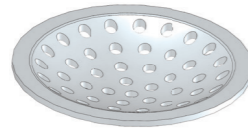
SINGLE 'T' (RUBBER RING JOINT-ISI)



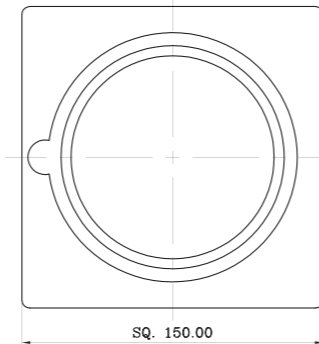
Size	C	ØD	ØE	H	L
75mm	45.00	75.00	89.60	181.00	142.25
90mm	51.00	90.00	104.60	226.00	163.90
110mm	58.00	110.00	125.60	247.00	192.35
160mm	74.00	160.00	180.20	332.00	264.90



ROUND TYPE JALLI 110MM FOR NAHANI TRAP



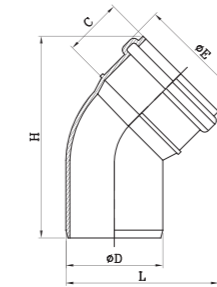
COVER/ SQUARE BODY FOR ROUND JALLI (6" X 6")



BEND 45° (RUBBER RING JOINT-ISI)



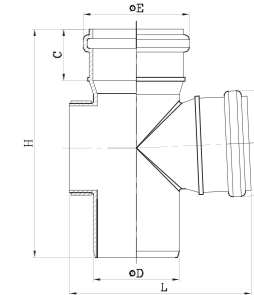
Size	C	ØD	ØE	H	L
75mm	45.00	75.00	89.60	154.15	118.25
90mm	51.00	90.00	104.60	173.90	137.20
110mm	58.00	110.00	125.60	202.05	163.00



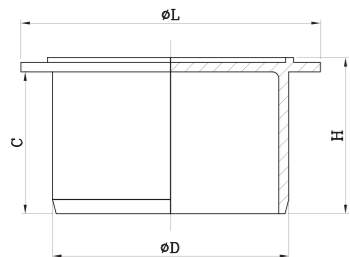
SINGLE 'T' WITH DOOR (RUBBER RING JOINT-ISI)



Size	C	ØD	ØE	H	L
75mm	45.00	75.00	89.60	181.00	159.95
90mm	51.00	90.00	104.60	226.00	181.60
110mm	58.00	110.00	125.60	247.00	214.55
160mm	74.00	160.00	180.20	332.00	291.80

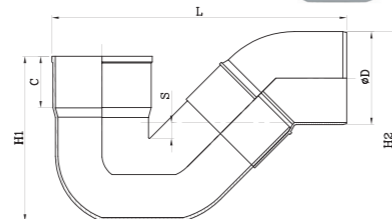


SOCKET PLUG (ISI)



Size	C	ØD	H	ØL
160mm	61.00	160.00	65.00	174.00

P-TRAP (SOLVENT JOINT)

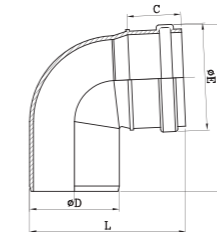


Size	C	ØD	H1	H2	L	S
110mm x 110mm	70.00	110.00	197.00	250.00	395.00	52.00
125mm x 110mm	70.00	110.00	197.00	250.00	405.00	52.00

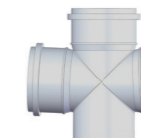
BEND 87.5° (RUBBER RING JOINT-ISI)



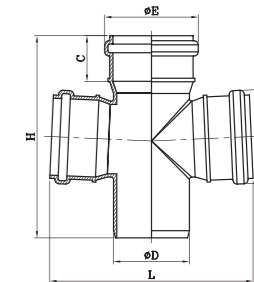
Size	C	ØD	ØE	H	L
75mm	45.00	75.00	89.60	139.60	130.45
90mm	51.00	90.00	104.60	161.10	151.75
110mm	58.00	110.00	125.60	189.55	179.25
160mm	74.00	160.00	180.20	261.60	248.45



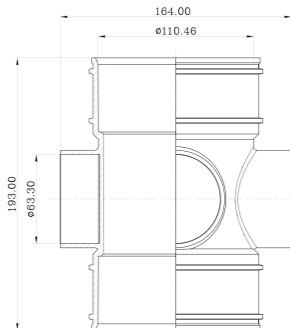
DOUBLE 'T' (RUBBER RING JOINT-ISI)



Size	C	ØD	ØE	H	L
75mm	45.00	75.00	89.60	181.00	194.90
90mm	51.00	90.00	104.60	226.00	225.20
110mm	58.00	110.00	125.60	247.00	259.10



BOSS CONNECTOR

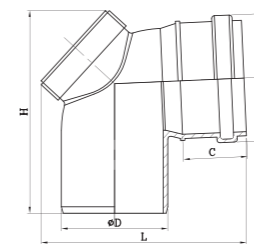


Size	C	ØD	H	ØL
110 X 63mm	61.00	160.00	65.00	174.00

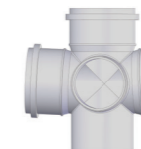
DOOR BEND 87.5° (RUBBER RING JOINT-ISI)



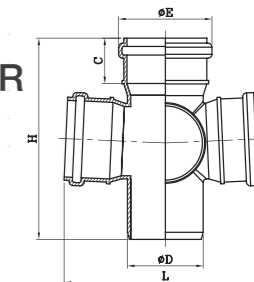
Size	C	ØD	ØE	H	L
75mm	45.00	75.00	89.60	142.80	144.75
90mm	51.00	90.00	104.60	164.85	166.95
110mm	58.00	110.00	125.60	193.80	196.70
160mm	74.00	160.00	180.20	251.80	258.30



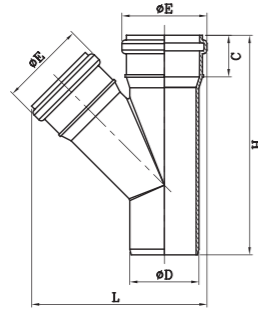
DOUBLE 'T' WITH DOOR (RUBBER RING JOINT-ISI)



Size	C	ØD	ØE	H	L
75mm	45.00	75.00	89.60	181.00	194.90
90mm	51.00	90.00	104.60	226.00	225.20
110mm	58.00	110.00	125.60	252.00	259.10

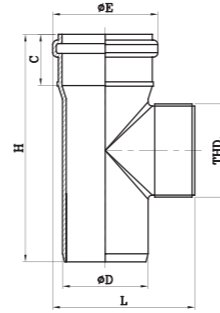


SINGLE 'Y' 45°
(RUBBER RING JOINT-ISI)



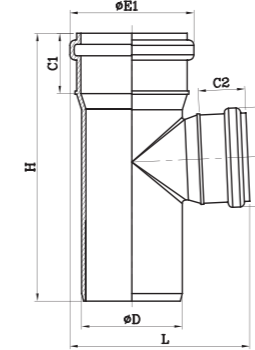
Size	C	ØD	ØE	H	L
75mm	45.00	75.00	89.60	211.00	174.45
90mm	51.00	90.00	104.60	260.00	204.30
110mm	58.00	110.00	125.60	291.00	244.10
160mm	74.00	160.00	180.20	407.00	344.20

CLEANSING PIPE
(RUBBER RING JOINT-ISI)



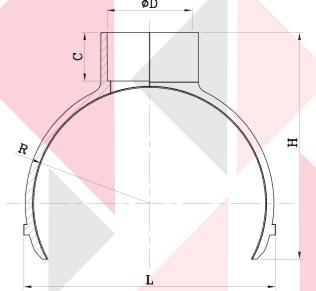
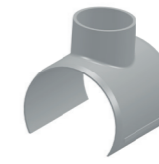
Size	C	ØD	ØE	H	L
75mm	45.00	75.00	89.60	181.00	107.30
110mm	58.00	110.00	125.60	247.00	147.80
160mm	74.00	160.00	180.20	332.00	200.10

REDUCER SINGLE 'T'
(RUBBER RING JOINT-ISI)



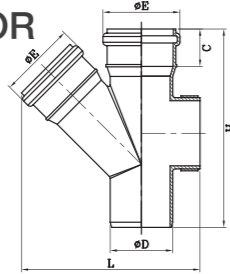
Size	C1	C2	ØD	ØE1	ØE2	H	L
110 x 160mm	74.00	58.00	160.00	180.20	125.60	332.00	243.85

STRIP CONNECTOR



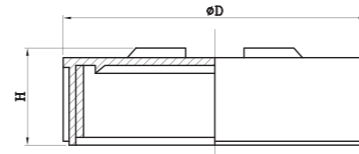
Size	ØD	C	R	H	L
110 x 40mm	40.34	23.00	55.00	107.50	119.30
110 x 50mm	50.38	28.00	55.00	112.50	119.30
110 x 63mm	63.40	32.00	55.00	116.50	119.30

SINGLE 'Y' 45° WITH DOOR
(RUBBER RING JOINT-ISI)



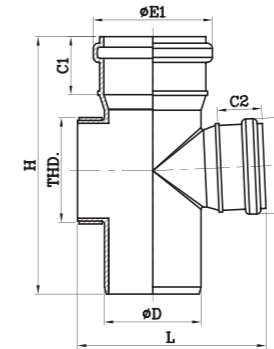
Size	C	ØD	ØE	H	L
75mm	45.00	75.00	89.60	211.00	192.15
90mm	51.00	90.00	104.60	260.00	222.00
110mm	58.00	110.00	125.60	291.00	266.30
160mm	74.00	160.00	180.20	407.00	364.10

DOOR CAP



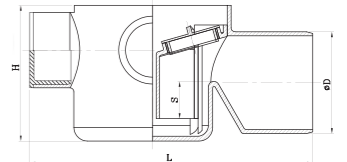
Size	ØD	H
50mm	54.00	19.50
63mm	65.00	19.50
75mm	78.00	25.00
90mm	92.00	26.00
110mm	106.00	29.50

RED. SINGLE 'T' WITH DOOR
(RUBBER RING JOINT-ISI)



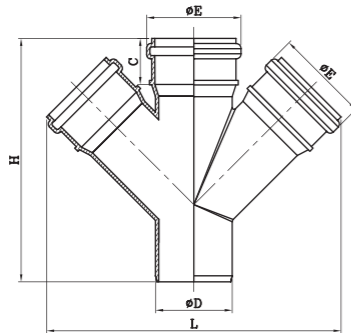
Size	C1	C2	ØD	ØE1	ØE2	H	L
160 x 110mm	74.00	58.00	160.00	180.20	125.60	332.00	263.75

MULTI FLOOR TRAP
(SOLVENT JOINT)



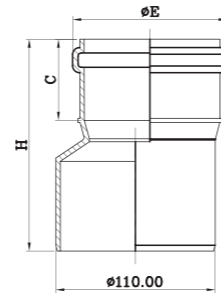
Size	ØD	H	L	S
4"	75.00	100.00	209.00	27.50

DOUBLE 'Y' 45°
(RUBBER RING JOINT-ISI)



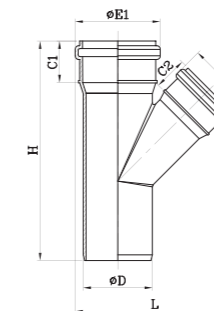
Size	C	ØD	ØE	H	L
75mm	45.00	75.00	89.60	211.00	259.30
110mm	58.00	110.00	125.60	291.00	362.30

REDUCER
(RUBBER RING JOINT-ISI)



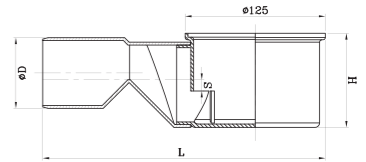
Size	C	ØE	H
110 x 75mm	45.00	75.00	89.60
110 x 90mm	51.00	90.00	104.60

REDUCING SINGLE 'Y' 45°
(RUBBER RING JOINT-ISI)



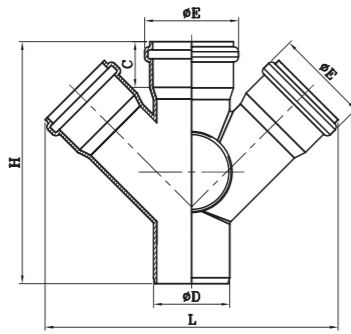
Size	C1	C2	ØD	ØE1	ØE2	H	L
160 x 110mm	74.00	58.00	160.00	180.20	125.60	407.00	311.35

NAHANI TRAP
(SOLVENT JOINT)



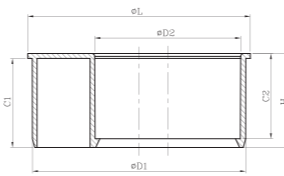
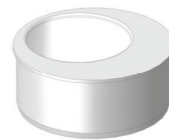
Size	ØD	H	L	S
110 x 63mm	63.00	84.00	252.00	10.00
110 x 75mm	75.00	84.00	252.00	10.00
110 x 90mm	96.00	84.00	252.00	10.00
110 x 110mm	115.00	84.00	252.00	10.00

DOUBLE 'Y' 45° WITH DOOR
(RUBBER RING JOINT-ISI)



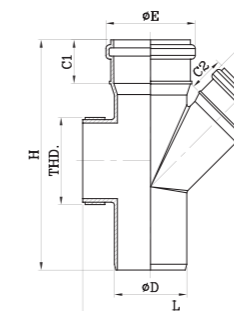
Size	C	ØD	ØE	H	L
75mm	45.00	75.00	89.60	211.00	259.30
110mm	58.00	110.00	125.60	291.00	362.30

REDUCING BUSH
(SOLVENT JOINT)



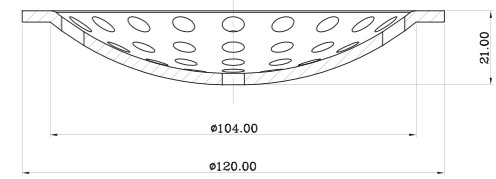
Size	C1	C2	ØD1	ØD2	H	ØL
110 x 50mm	46.00	31.20	110.00	50.38	48.50	115.00
110 x 63mm	46.00	38.00	110.00	63.40	48.50	115.00
110 x 75mm	46.00	44.00	110.00	75.40	48.50	115.00

REDUCING SINGLE 'Y' 45° WITH DOOR
(RUBBER RING JOINT-ISI)

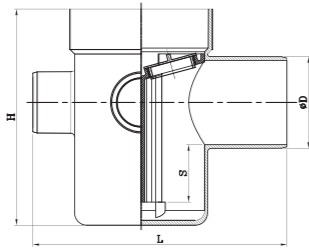


Size	C1	C2	ØD	ØE1	ØE2	H	L
160 x 110mm	74.00	58.00	160.00	180.20	125.60	407.00	331.35

ROUND TYPE JALLI
110MM FOR NAHANI TRAP

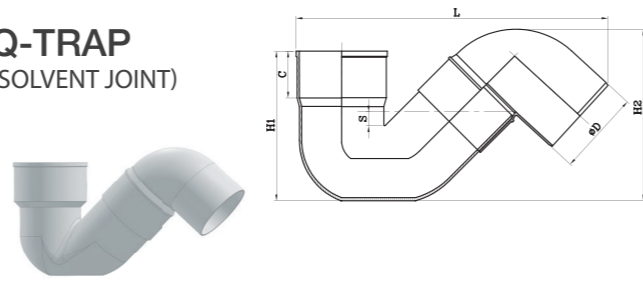


MULTI FLOOR TRAP (SOLVENT JOINT)



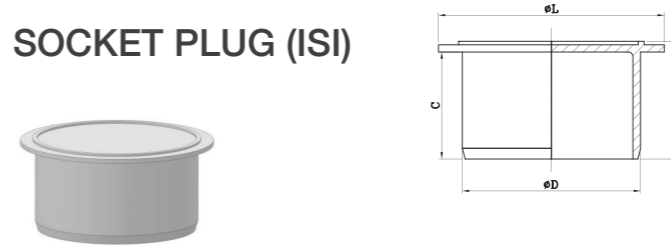
Size	ØD	H	L	S
7"	75.00	177.00	208.00	47.00

Q-TRAP (SOLVENT JOINT)



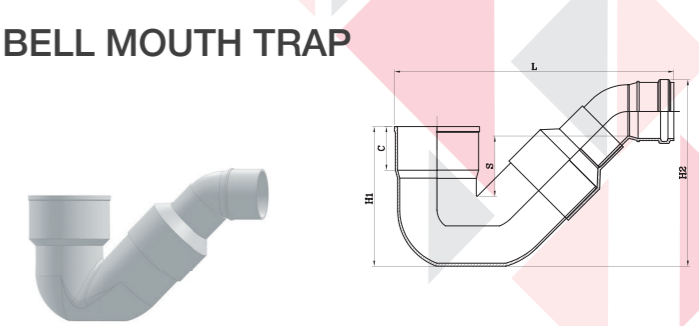
Size	C	ØD	H1	H2	L	S
110 x 110mm	61.00	110.00	194.85	223.50	406.15	26.80
125 x 110mm	69.20	110.00	203.35	223.50	413.65	26.80

SOCKET PLUG (ISI)



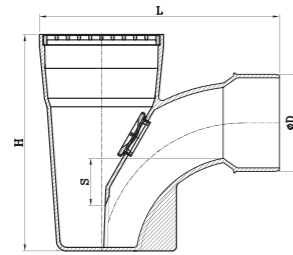
Size	C	ØD	H	ØL
75mm	45.00	75.00	49.50	95.00
110mm	48.00	110.00	52.50	130.00

BELL MOUTH TRAP



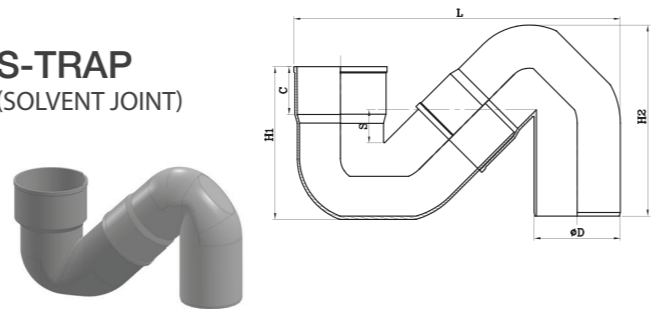
Size	C	H1	H2	L	S
110 x 75mm	61.00	194.00	254.20	378.70	85.85

GULLY TRAP



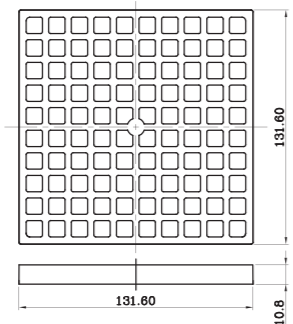
Size	ØD	H	L	S
110mm	110.00	245.00	271.80	53.70

S-TRAP (SOLVENT JOINT)

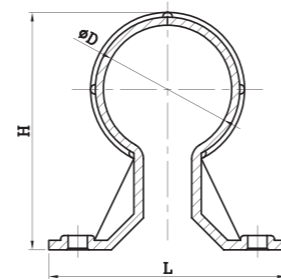


Size	C	ØD	H1	H2	L	S
110 x 110mm	61.00	110.00	194.85	248.00	416.55	50.95
125 x 110mm	69.20	110.00	203.33	247.70	423.90	50.35

SQUARE TYPE JALLI 110MM FOR GULLY TRAP

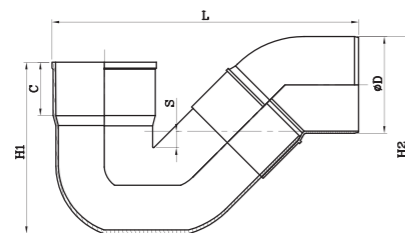


PIPE CLIP



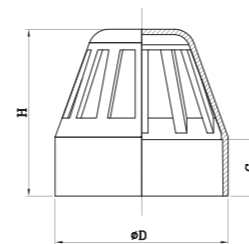
Size	ØC	H	L
40mm	40.00	74.00	74.00
50mm	50.00	84.00	86.00
63mm	63.00	97.00	102.00
75mm	75.00	110.50	124.00
90mm	90.00	125.00	142.00
110mm	110.00	150.00	160.00

P-TRAP (SOLVENT JOINT)



Size	C	ØD	H1	H2	L	S
75 x 75mm	45.00	75.00	141.00	167.70	254.10	28.95
110 x 110mm	61.00	110.00	194.85	224.15	348.60	27.45
125 x 110mm	69.20	110.00	203.35	224.15	356.10	27.45

VENT COWL (SOLVENT JOINT-ISI)



Size	C	ØD	H
63mm	22.00	67.40	65.00
75mm	22.00	79.40	73.00
90mm	22.00	94.40	75.00
110mm	24.00	114.46	87.50
160mm	24.00	164.70	130.00

▶ FEATURES & BENEFITS



- ▶ Lighter than conventional C.I pipes but strong.
- ▶ Compatible with other drainage products.
- ▶ Easy to install with low assembly force.
- ▶ Smooth bore.
- ▶ Leak-proof joints.
- ▶ Long-term sealing performance.
- ▶ Cost-efficient.
- ▶ World-Class Seals stronger than locally available seals.

▶ APPLICATIONS



- ▶ Inside & outside building drainage systems including ventilation.
- ▶ Rain water discharge & harvesting for residential & commercial buildings.
- ▶ Industrial buildings and public utilities.

Extensively used in:



▶ JOINTING METHODS



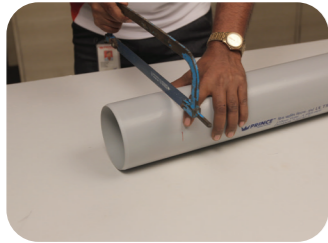
PROCESS:

- ▶ Solvent Cement Joint

▶ DOs

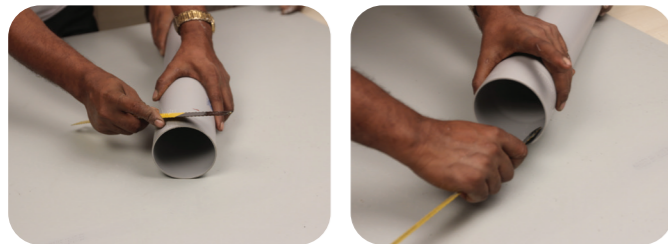
CUTTING

It is imperative to mark the pipe from all sides so that pipe is cut with the help of a Hand Saw. It should be a right angle cut from all the sides. The cut piece should not be with burr on edges.



CHAMFERING

(This step is required when pipe cutting is done from 3 mtr pipe to any required length during installation)
After cutting, the pipe needs to be chamfered from the outer sides. It is advisable to provide an approximately 2 mm wide, 15° chamfer on spigot end.



DEBURRING AND RIDGE REMOVAL

Remove all the burrs and ridges accumulated on the inner as well as the outer edges of the pipe with the help of a deburring knife, file or abrasive paper.



▶ DON'Ts

CUTTING

Do not cut slant/ unevenly.



CHAMFERING

Do not proceed with installation of pipe without chamfering.



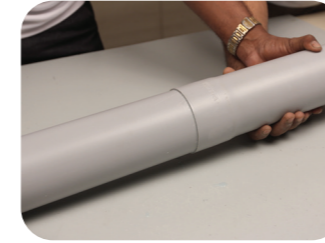
DEBURRING AND RIDGE REMOVAL

Do not proceed with the installation of pipe without deburring.

▶ DOs

DRYFIT TEST

Before applying solvent cement, insert the pipe end into the socket of the next pipe or fitting to check that interference occurs at about 1/3 to 2/3 of the socket depth.



CLEANING

Thoroughly clean the pipe with dry cloth where the solvent cement is going to be applied to avoid dust, dirt, oil, moisture and other foreign materials during the installation process.



APPLICATION OF SOLVENT CEMENT

Mark the pipe length to be inserted for jointing. Apply a liberal coat of solvent cement with the help of the brush on the marked surface.



JOINTING

Push the pipe inside the fitting / pipe so that it goes inside equally from all the sides. Wipe off excess solvent cement that comes out from all the edges. Hold the joint for one to two minutes so that the jointing is perfect.



INSTALLATION AND COMMISSIONING

- Pipe line should be installed in proper alignment & along with necessary clamps.
- Pressure testing may be carried out after a curing period of 24 hrs.

▶ DON'Ts

DRYFIT TEST

Do not apply solvent cement without dryfit test.

CLEANING

Do not join the pipes without cleaning the pipe ends.

APPLICATION OF SOLVENT CEMENT

Do not apply excess solvent cement on the pipe and do not use solvent cement by hand.

JOINTING

Do not use a hammer or half push the pipe.

INSTALLATION AND COMMISSIONING

- Avoid loose joints & misalignment.
- Pressure testing should not be done before 24 hrs of curing.

▶ JOINTING METHODS



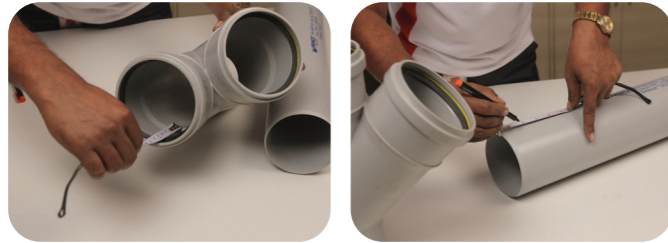
PROCESS:

- ▶ Ultrafit with World Class Seals

▶ DOs

CUTTING

It is imperative to mark the pipe from all sides so that pipe is cut with the help of a Hand Saw. It should be a right angle cut from all the sides. The cut piece should not be with burr on edge.



▶ DON'Ts

CUTTING

Do not cut slant/ unevenly.



CHAMFERING

(This step is required when pipe cutting is done from 3 mtr pipe to any required length during installation) After cutting, the pipe needs to be chamfered from the outer sides of the pipe. It is advisable to provide approximately 2 mm wide, 15° chamfer on pipe end.



CHAMFERING

Do not proceed with installation of pipe without chamfering.

DEBURRING AND RIDGE REMOVAL

Remove all the burrs and ridges accumulated on the inner as well as the outer edges of the pipe with the help of a deburring knife, file or abrasive paper.



DEBURRING AND RIDGE REMOVAL

Do not proceed with the installation of pipe without deburring.



▶ DOs

CLEANING

Thoroughly clean the pipe with dry cloth where the solvent cement is going to be applied to avoid dust, dirt, oil, moisture and other foreign materials during the installation process.



DRYFIT TEST

Before applying solvent cement, insert the pipe end into the socket of the next pipe or fitting to check that interference occurs at about 1/3 to 2/3 of the socket depth.



APPLICATION OF LUBRICANT

Mark the pipe length to be inserted for jointing. Apply a liberal coat of lubricant for easy and smooth insertion.



JOINTING

Push the pipe inside the fitting till marked end is completely inserted equally from all sides.



LEAKAGE TEST

Leakage tests may be carried out at 0.5 kg/cm² pressure for 15 minutes.

INSTALLATION AND COMMISSIONING

- Pipe line should be installed in proper alignment and along with necessary clamps.
- Pressure tests may be carried out at 0.5 kg/cm² pressure for 15 minutes.

▶ DON'Ts

CLEANING

Do not join the pipes without cleaning the pipe ends.

DRYFIT TEST

Do not apply solvent cement without dryfit test.

APPLICATION OF LUBRICANT

Do not insert the pipe and fitting without lubrication.



JOINTING

Do not use a hammer or half push the pipe.



LEAKAGE TEST

Ensure proper alignment and avoid use of damaged rubber rings if any.

INSTALLATION AND COMMISSIONING

- Avoid loose joints & misalignments.
- Pressure testing should not be done before 24 hrs of curing.