

SMARTFIT[®]

CPVC Plumbing Systems
for hot & cold water

Smartfit CPVC plumbing systems is designed for hot & cold water which is suitable for all plumbing and potable water application. It has a proven hot & cold water performance from 0°C to 93°C. Its corrosion resistant property makes it usable in all weather conditions & ensures constant flow over a lifetime. This system is used in industrial, residential, commercial & public complexes.



*ZERO DEFECT MANUFACTURING PROCESS

Pipes as per
IS:15778



Fittings as per

ASTM F441
ASTM D 2846
(SDR 11)
ASTM F 439
(Sch 80)

ANY WEATHER
NO FIKAR.



► SPECIFICATIONS

	Fittings	Pipes
Material	Chlorinated Polyvinyl Chloride (CPVC)	Chlorinated Polyvinyl Chloride (CPVC)
Colour	Off-White	Off-White
Reference Standards	SDR-11 as per ASTM D2846 (Size 1/2" to 2") & Sch 80 as per ASTM F 439 (Sizes 2 1/2", 3" & 4").	SDR-11 & 13.5 as per IS 15778:2007 (Sizes 1/2" to 4") & Sch 40 & 80 as per ASTM F 441 (2 1/2", 3" & 4").
End Connections	Solvent sockets. For transition joints, fittings with plastic threaded & metal threaded inserts are available.	Solvent Joint.



PIPES

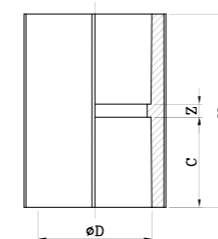
► PRODUCT NAMES / RANGE

Dimensions for Smartfit Pipes

As per IS 15778											
Nominal Bore		Outside Diameter		SDR - 11				SDR - 13.5			
				Wall thickness		Working pressure		Wall thickness		Working pressure	
Inch	(mm)	(mm)	Min	Max	At 27°C	At 82°C	Min	Max	At 27°C	At 82°C	
			(mm)	(mm)	kg/cm ²	kg/cm ²	(mm)	(mm)	kg/cm ²	kg/cm ²	
1/2"	15	15.90 (+/- 0.10)	1.70	2.20	28.14	6.93	1.40	1.90	22.22	5.60	
3/4"	20	22.20 (+/- 0.10)	2.00	2.50	28.14	6.93	1.70	2.20	22.22	5.60	
1"	25	28.60 (+/- 0.10)	2.60	3.10	28.14	6.93	2.10	2.60	22.22	5.60	
1 1/4"	32	34.90 (+/- 0.10)	3.20	3.70	28.14	6.93	2.60	3.10	22.22	5.60	
1 1/2"	40	41.30 (+/- 0.10)	3.80	4.30	28.14	6.93	3.10	3.60	22.22	5.60	
2"	50	54.00 (+/- 0.10)	4.90	5.50	28.14	6.93	4.00	4.60	22.22	5.60	

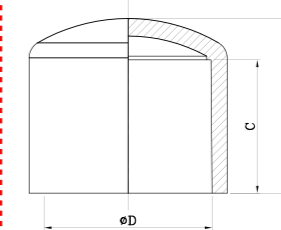
As per ASTM F 441											
Nominal Bore		Outside Diameter		Schedule 40				Schedule 80			
				Wall thickness		Working pressure		Wall thickness		Working pressure	
Inch	(mm)	(mm)	Min	Max	At 27°C	At 82°C	Min	Max	At 27°C	At 82°C	
			(mm)	(mm)	kg/cm ²	kg/cm ²	(mm)	(mm)	kg/cm ²	kg/cm ²	
2 1/2"	65	73.00 (+/- 0.18)	5.16	5.77	21.10	5.30	7.01	7.85	29.57	7.43	
3"	80	88.90 (+/- 0.20)	5.49	6.15	18.25	4.58	7.62	8.53	26.00	6.32	
4"	100	114.30 (+/- 0.23)	6.02	6.73	15.49	3.87	8.56	9.58	22.53	5.60	

COUPLER (SDR-11)



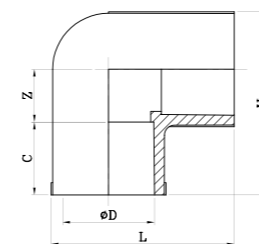
Size	ØD	C	Z	H
1/2"	15.90	12.70	2.60	28.00
3/4"	22.20	17.80	2.60	38.20
1"	28.60	22.90	2.60	48.40
1 1/4"	34.90	27.95	2.60	58.50
1 1/2"	41.30	33.05	2.60	68.70
2"	54.00	43.20	2.60	89.00

END CAP (SDR-11)



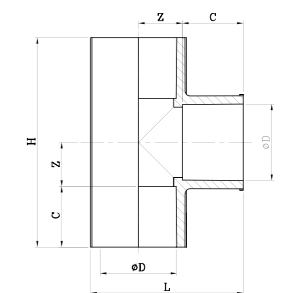
Size	ØD	C	H
1/2"	15.90	12.70	18.00
3/4"	22.20	17.80	25.00
1"	28.60	22.90	30.00
1 1/4"	34.90	27.95	37.00
1 1/2"	41.30	33.05	42.50
2"	54.00	43.20	55.50

ELBOW (SDR-11)



Size	ØD	C	Z	H & L
1/2"	15.90	12.70	9.70	32.60
3/4"	22.20	17.80	12.90	44.75
1"	28.60	22.90	16.10	56.45
1 1/4"	34.90	27.95	19.25	68.40
1 1/2"	41.30	33.05	22.45	80.55
2"	54.00	43.20	28.85	104.55

TEE (SDR-11)

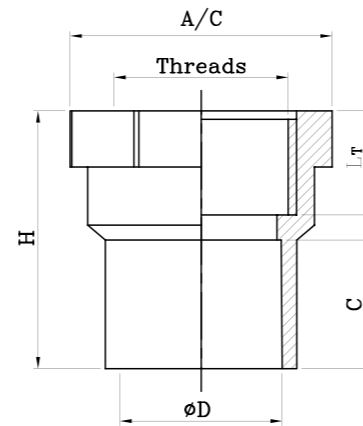


Size	ØD	C	Z	H	L
1/2"	15.90	12.70	9.70	44.80	32.60
3/4"	22.20	17.80	12.90	61.40	44.75
1"	28.60	22.90	16.10	78.00	56.45
1 1/4"	34.90	27.95	19.25	94.40	68.40
1 1/2"	41.30	33.05	22.45	111.00	80.55
2"	54.00	43.20	28.85	144.10	104.55

FEMALE THREADED ADAPTOR (SDR-11)



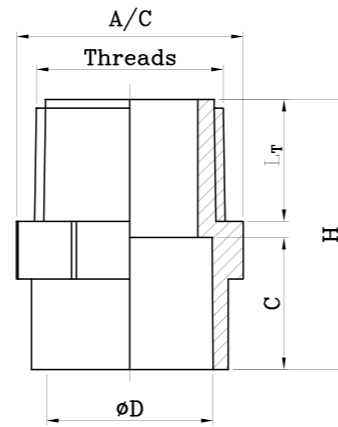
Size	ØD	C	THREADS	L _T	H	A/C
1/2"	15.90	12.70	1/2" (14-TPI)	15.30	32.50	30.60
3/4"	22.20	17.80	3/4" (14-TPI)	15.75	38.05	37.20
1"	28.60	22.90	1" (11-TPI)	18.50	45.90	46.60
1 1/4"	34.90	27.95	1 1/4" (11-TPI)	20.80	53.75	57.15
1 1/2"	41.30	33.05	1 1/2" (11-TPI)	22.10	60.15	64.20
2"	54.00	43.20	2" (11-TPI)	23.40	71.60	80.25



MALE THREADED ADAPTOR (SDR-11)



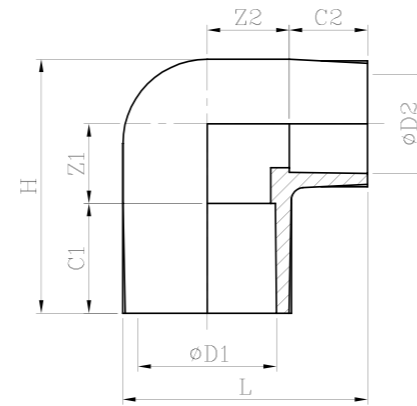
Size	ØD	C	THREADS	L _T	H	A/C
1/2"	15.90	12.70	1/2" (14-TPI)	17.00	32.30	24.50
3/4"	22.20	17.80	3/4" (14-TPI)	16.50	36.90	30.95
1"	28.60	22.90	1" (11-TPI)	21.10	46.80	39.30
1 1/4"	34.90	27.95	1 1/4" (11-TPI)	23.15	54.50	48.50
1 1/2"	41.30	33.05	1 1/2" (11-TPI)	24.60	61.75	56.95
2"	54.00	43.20	2" (11-TPI)	26.00	74.40	74.15



REDUCING ELBOW (SDR-11)



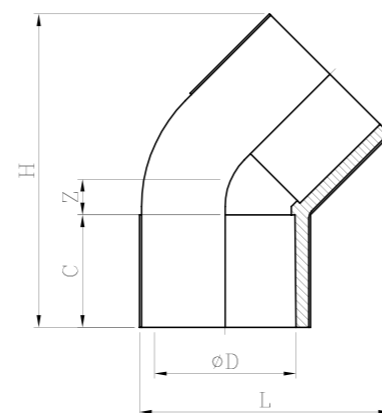
Size	ØD1	ØD2	C1	C2	Z1	Z2	H	L
3/4" X 1/2"	22.20	15.90	17.80	12.70	12.90	13.30	41.15	39.70



ELBOW 45° (SDR-11)



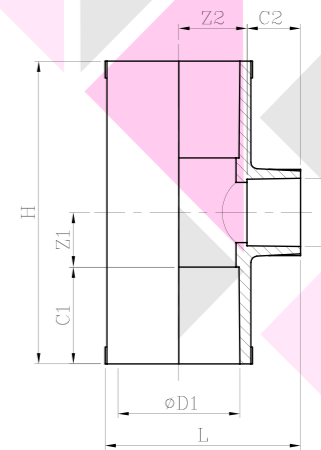
Size	ØD	C	Z	H	L
1/2"	15.90	12.70	4.65	36.85	29.70
3/4"	22.20	17.80	6.00	50.55	40.75
1"	28.60	22.90	7.30	63.90	51.10
1 1/4"	34.90	27.95	8.65	77.55	62.35
1 1/2"	41.30	33.05	9.95	91.10	73.15
2"	54.00	43.20	12.60	118.25	94.95



REDUCING TEE (SDR-11)



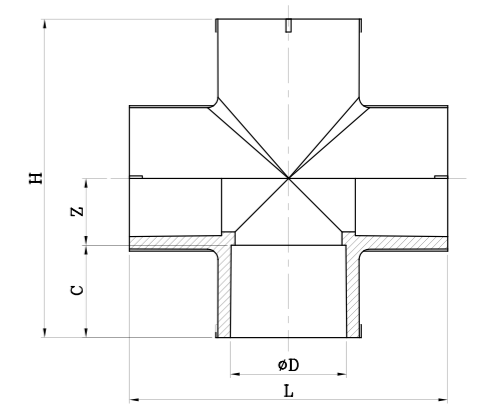
Size	ØD1	ØD2	C1	C2	Z1	Z2	H	L
3/4" X 1/2"	22.20	15.90	17.80	12.70	9.70	12.90	55.00	39.25
1" X 1/2"	28.60	15.90	22.90	12.70	12.90	16.10	71.60	46.25
1" X 3/4"	28.60	22.20	22.90	17.80	12.90	16.10	71.60	51.35
1 1/4" X 1/2"	34.90	15.90	27.95	12.70	16.10	19.25	88.10	53.15
1 1/4" X 3/4"	34.90	22.20	27.95	17.80	16.10	19.25	88.10	58.25
1 1/4" X 1"	34.90	28.60	27.95	22.90	16.10	19.25	88.10	63.35
1 1/2" X 1/2"	41.30	15.90	33.05	12.70	19.25	22.45	104.60	60.20
1 1/2" X 3/4"	41.30	22.20	33.05	17.80	19.25	22.45	104.60	65.30
1 1/2" X 1"	41.30	28.60	33.05	22.90	19.25	22.45	104.60	70.40
1 1/2" X 1 1/4"	41.30	34.90	33.05	27.95	19.25	22.45	104.60	75.45
2" X 1/2"	54.00	15.90	43.20	12.70	22.45	28.85	131.30	74.05
2" X 3/4"	54.00	22.20	43.20	17.80	22.45	28.85	131.30	79.15
2" X 1"	54.00	28.60	43.20	22.90	22.45	28.85	131.30	84.25
2" X 1 1/4"	54.00	34.90	43.20	27.95	22.45	28.85	131.30	89.30
2" X 1 1/2"	54.00	41.30	43.20	33.05	22.45	28.85	131.30	94.40



FOUR WAY TEE (SDR-11)



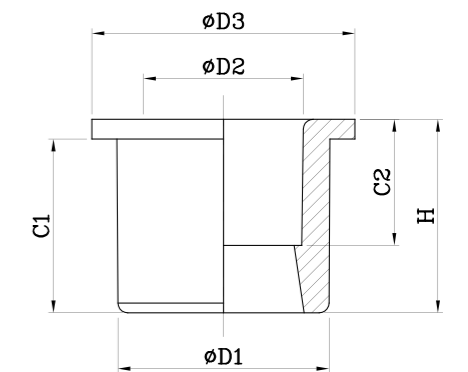
Size	ØD	C	Z	H & L
1/2"	15.90	12.70	9.70	44.80
3/4"	22.20	17.80	12.90	61.40



TRANSITION BUSH (SDR-11)



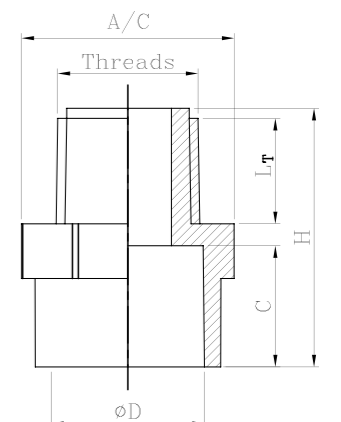
Size	ØD1	ØD2	ØD3	C1	C2	H
1/2"	21.34	15.90	26.50	17.50	12.70	19.50
3/4"	26.67	22.20	32.50	18.30	17.80	21.30



RED. MALE THREADED ADAPTOR (SDR-11)



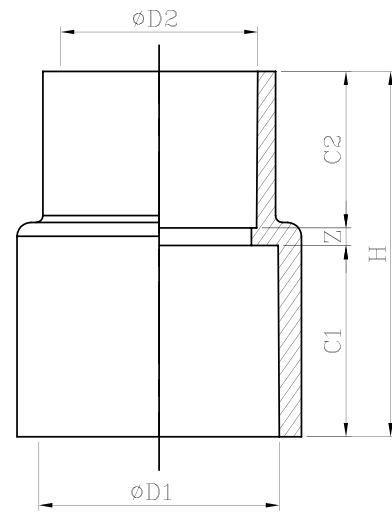
Size	ØD	C	THREADS	L _T	H	A/C
3/4" X 1/2"	22.20	17.80	1/2" (14-TPI)	17.00	38.00	31.20



REDUCER (SDR-11)



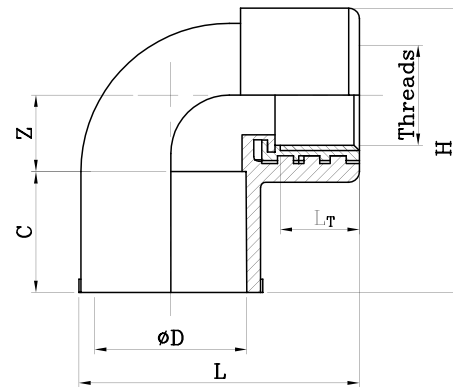
Size	ØD1	ØD2	C1	C2	Z	H
3/4" X 1/2"	22.20	15.90	17.80	12.70	2.60	33.10
1" X 1/2"	28.60	15.90	22.90	12.70	2.60	38.20
1" X 3/4"	28.60	22.20	22.90	17.80	2.60	43.30
1 1/4" X 1/2"	34.90	15.90	27.95	12.70	2.60	43.25
1 1/4" X 3/4"	34.90	22.20	27.95	17.80	2.60	48.35
1 1/4" X 1"	34.90	28.60	27.95	22.90	2.60	53.45
1 1/2" X 1/2"	41.30	15.90	33.05	12.70	2.60	48.35
1 1/2" X 3/4"	41.30	22.20	33.05	17.80	2.60	53.45
1 1/2" X 1"	41.30	28.60	33.05	22.90	2.60	58.55
1 1/2" X 1 1/4"	41.30	34.90	33.05	27.95	2.60	63.60
2" X 1/2"	54.00	15.90	43.20	12.70	2.60	58.50
2" X 3/4"	54.00	22.20	43.20	17.80	2.60	63.60
2" X 1"	54.00	28.60	43.20	22.90	2.60	68.70
2" X 1 1/4"	54.00	34.90	43.20	27.95	2.60	73.75
2" X 1 1/2"	54.00	41.30	43.20	33.05	2.60	78.85



RED. FEMALE THREADED ELBOW (BRASS INSERT) (SDR-11)



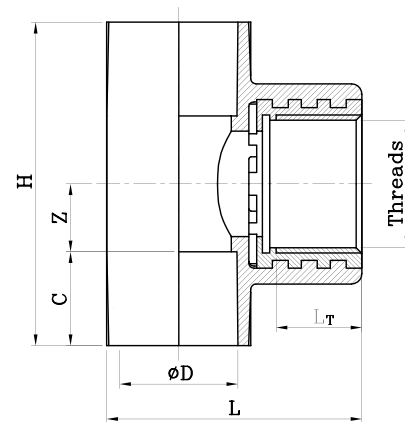
Size	ØD	C	Z	THREADS	L _T	H	L
3/4" X 1/2"	22.20	17.80	17.00	1/2" (14-TPI)	15.00	50.80	47.00
1" X 1/2"	28.60	22.90	14.50	1/2" (14-TPI)	15.00	53.90	53.20
1" X 3/4"	28.60	22.90	21.00	3/4" (14-TPI)	16.30	62.90	54.40



FEMALE THREADED TEE (BRASS INSERT) (SDR-11)



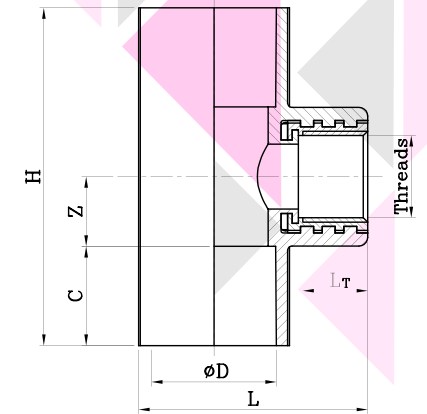
Size	ØD	C	Z	THREADS	L _T	H	L
1/2"	15.90	12.70	9.70	1/2" (14-TPI)	15.00	44.80	41.00
3/4"	22.20	17.80	12.90	3/4" (14-TPI)	16.30	61.40	48.50
1 1/4"	34.90	27.95	19.25	1 1/4" (11-TPI)	21.40	94.40	68.30



RED. FEMALE THREADED TEE (BRASS INSERT) (SDR-11)



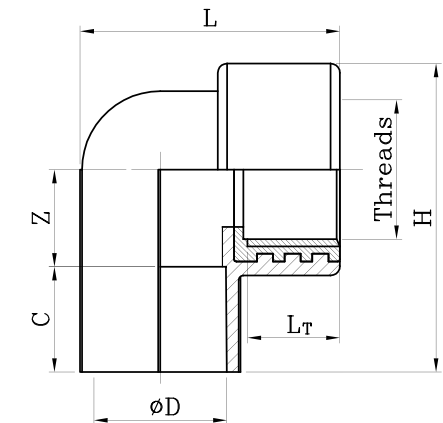
Size	ØD	C	Z	THREADS	L _T	H	L
3/4" X 1/2"	22.20	17.80	12.90	1/2" (14-TPI)	15.00	61.40	49.45
1" X 1/2"	28.60	22.90	16.10	1/2" (14-TPI)	15.00	78.00	52.95
1" X 3/4"	28.60	22.90	16.10	3/4" (14-TPI)	16.30	78.00	56.15



FEMALE THREADED ELBOW (BRASS INSERT) (SDR-11)



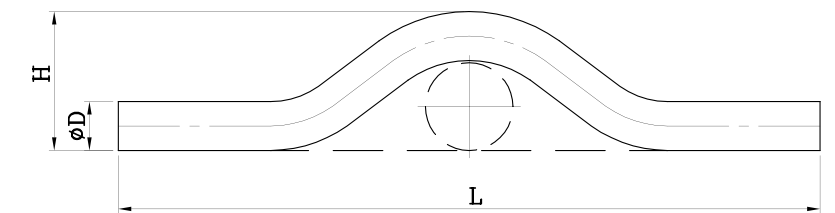
Size	ØD	C	Z	THREADS	L _T	H	L
1/2"	15.90	12.70	14.00	1/2" (14-TPI)	15.00	42.70	40.60
3/4"	22.20	17.80	17.00	3/4" (14-TPI)	16.30	53.80	48.45
1"	28.60	22.90	21.10	1" (11-TPI)	19.00	67.00	56.40
1 1/4"	34.90	27.95	21.25	1 1/4" (11-TPI)	21.40	68.70	79.60



CROSS OVER (FABRICATED) (SDR-11)



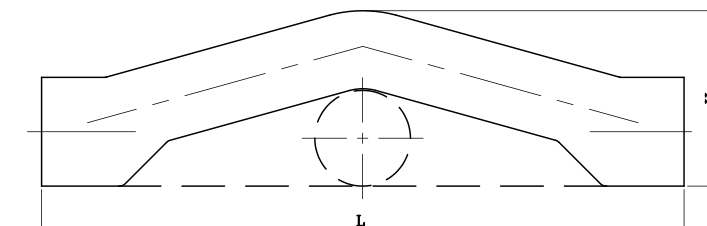
Size	ØD	H	L
1/2"	15.90	45.75	229.00
3/4"	22.20	48.80	251.00
1"	28.60	58.00	339.00



CROSS OVER MOULDED

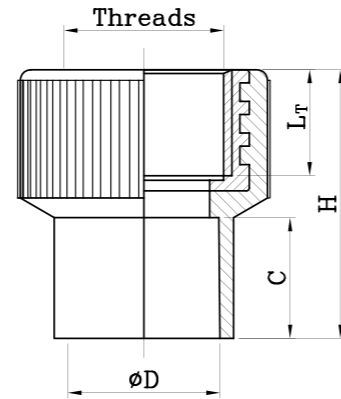


Size	H	L
3/2"	52.40	192.00
1"	64.00	252.80



FEMALE THREADED ADAPTOR

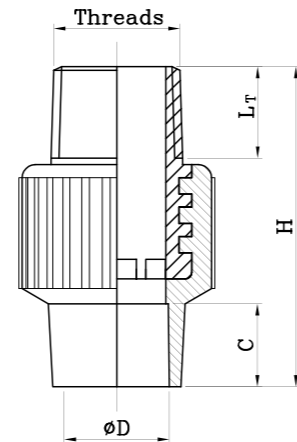
(BRASS INSERT) (SDR-11)



Size	ØD	C	THREADS	L _T	H
1/2"	15.90	12.70	1/2" (14-TPI)	15.00	37.20
3/4"	22.20	17.80	3/4" (14-TPI)	16.30	44.20
1"	28.60	22.90	1" (11-TPI)	19.00	51.00
1 1/4"	34.90	27.95	1 1/4" (11-TPI)	21.40	58.00
1 1/2"	41.30	33.05	1 1/2" (11-TPI)	21.40	65.00
2"	54.00	43.20	2" (11-TPI)	25.65	80.00

MALE THREADED ADAPTOR

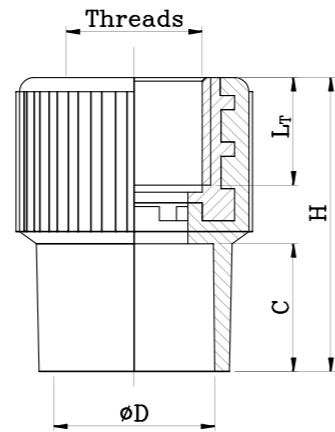
(BRASS INSERT) (SDR-11)



Size	ØD	C	THREADS	L _T	H
1/2"	15.90	12.70	1/2" (14-TPI)	14.00	49.00
3/4"	22.20	17.80	3/4" (14-TPI)	15.30	57.10
1"	28.60	22.90	1" (11-TPI)	18.00	65.00
1 1/4"	34.90	27.95	1 1/4" (11-TPI)	20.40	80.00
1 1/2"	41.30	33.05	1 1/2" (11-TPI)	20.40	87.00
2"	54.00	43.20	2" (11-TPI)	24.70	106.10

RED. FEMALE THREADED ADAPTOR

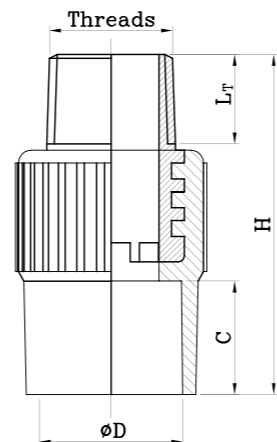
(BRASS INSERT) (SDR-11)



Size	ØD	C	THREADS	L _T	H
3/4" X 1/2"	22.20	17.80	1/2" (14-TPI)	15.00	41.00
1" X 1/2"	28.60	22.90	1/2" (14-TPI)	15.00	45.90
1" X 3/4"	28.60	22.90	3/4" (14-TPI)	16.30	47.40

RED. MALE THREADED ADAPTOR

(BRASS INSERT) (SDR-11)



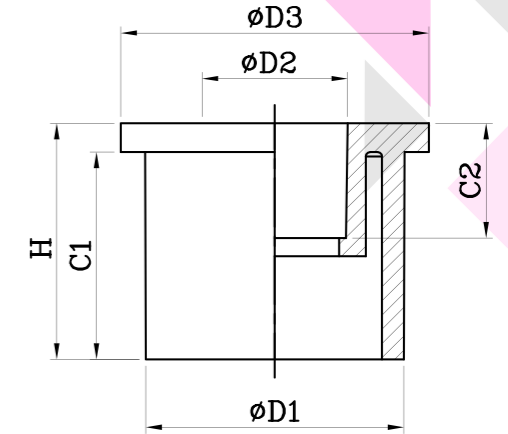
Size	ØD	C	THREADS	L _T	H
3/4" X 1/2"	22.20	17.80	1/2" (14-TPI)	14.00	53.30
1" X 3/4"	28.60	22.90	3/4" (14-TPI)	15.30	60.25

REDUCING BUSH

(SDR-11)



Size	ØD1	ØD2	ØD3	C1	C2	H
3/4" X 1/2"	22.20	15.90	26.55	17.80	12.70	21.00
1" X 1/2"	28.60	15.90	34.05	22.90	12.70	26.10
1" X 3/4"	28.60	22.20	34.05	22.90	17.80	26.10
1 1/4" X 1/2"	34.90	15.90	41.60	27.95	12.70	31.15
1 1/4" X 3/4"	34.90	22.20	41.60	27.95	17.80	31.15
1 1/4" X 1"	34.90	28.60	41.60	27.95	22.90	31.15
1 1/2" X 1/2"	41.30	15.90	49.30	33.05	12.70	36.25
1 1/2" X 3/4"	41.30	22.20	49.30	33.05	17.80	36.25
1 1/2" X 1"	41.30	28.60	49.30	33.05	22.90	36.25
1 1/2" X 1 1/4"	41.30	34.90	49.30	33.05	27.95	36.25
2" X 1/2"	54.00	15.90	64.20	43.20	12.70	46.40
2" X 3/4"	54.00	22.20	64.20	43.20	17.80	46.40
2" X 1"	54.00	28.60	64.20	43.20	22.90	46.40
2" X 1 1/4"	54.00	34.90	64.20	43.20	27.95	46.40
2" X 1 1/2"	54.00	41.30	64.20	43.20	33.05	46.40

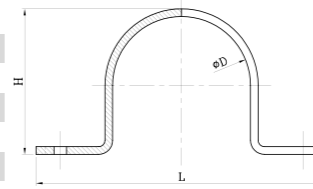


METAL CLAMP

(POWDER COATED)



Size	ØD	H	L
1/2"	15.90	16.40	55.00
3/4"	22.20	22.70	65.00
1"	28.60	29.10	72.00
1 1/4"	34.90	35.40	78.00
1 1/2"	41.30	41.80	85.00
2"	54.00	54.50	98.00

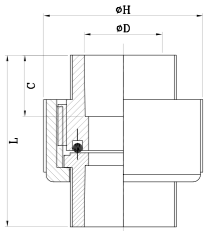


UNION

(SDR-11)



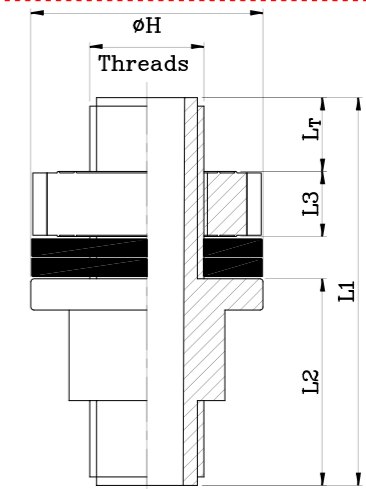
Size	ØD	C	ØH	L
1/2"	15.90	12.70	32.60	35.50
3/4"	22.20	17.80	44.80	46.80
1"	28.60	22.90	53.90	58.00
1 1/4"	34.90	27.95	64.50	70.55
1 1/2"	41.30	33.05	78.50	80.45
2"	54.00	43.20	91.50	102.00



TANK CONNECTOR



Size	ØH	THREADS	L _T	L1	L2	L3
1/2"	41.00	1/2" (14-TPI)	14.50	68.50	36.50	11.50
3/4"	45.50	3/4" (14-TPI)	18.50	75.50	39.50	11.50
1"	56.00	1" (11-TPI)	22.50	86.50	45.50	12.50
1 1/4"	65.00	1 1/4" (11-TPI)	23.50	93.00	49.00	14.50
1 1/2"	71.00	1 1/2" (11-TPI)	28.50	102.00	53.00	14.50
2"	83.00	2" (11-TPI)	29.50	103.50	53.50	14.50

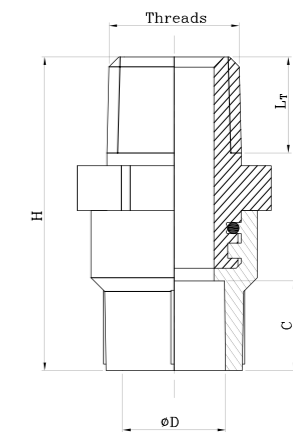


MALE THREADED ADAPTOR

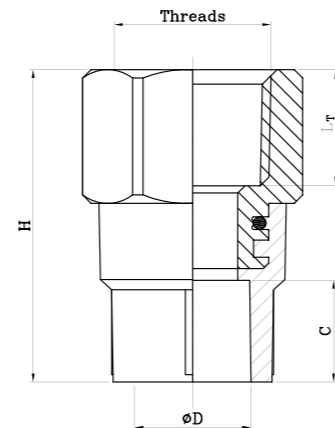
(HEAVY BRASS INSERT)



Size	ØD	C	THREADS	L _T	H
1/2"	15.90	14.00	1/2" (BSPT)	15.00	49.00
3/4"	22.20	19.00	3/4" (BSPT)	15.00	56.00
1"	28.60	24.00	1" (BSPT)	20.15	71.25
1 1/4"	34.90	27.95	1 1/4" (BSPT)	21.20	80.75
1 1/2"	41.30	33.05	1 1/2" (BSPT)	21.75	88.15
2"	54.00	43.80	2" (BSPT)	22.60	102.25



FEMALE THREADED ADAPTOR (HEAVY BRASS INSERT)

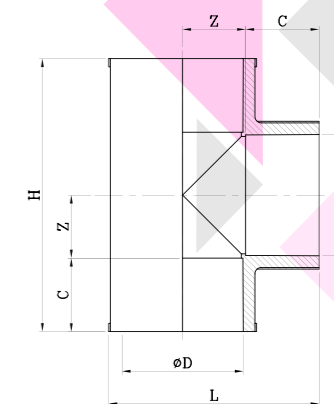


Size	ØD	C	THREADS	Lr	H
1/2"	15.90	14.00	1/2" (BSPT)	16.00	43.00
3/4"	22.20	19.00	3/4" (BSPT)	16.75	50.00
1"	28.60	24.00	1" (BSPT)	22.00	65.20
1 1/4"	34.90	27.95	1 1/4" (BSPT)	26.60	78.40
1 1/2"	41.30	33.05	1 1/2" (BSPT)	27.80	83.50
2"	54.00	43.80	2" (BSPT)	25.40	93.50

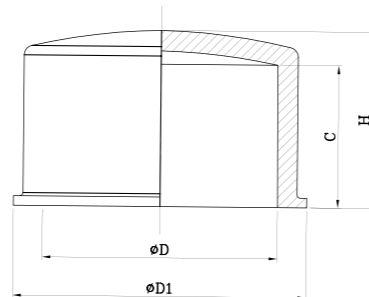
TEE (SCH-80)



Size	ØD	C	Z	H	L
2 1/2"	73.00	44.45	38.10	165.10	127.25
3"	88.90	47.65	46.05	187.40	146.95
4"	114.30	57.15	58.75	231.80	182.85



END CAP (COLLAR TYPE) (SCH-80)

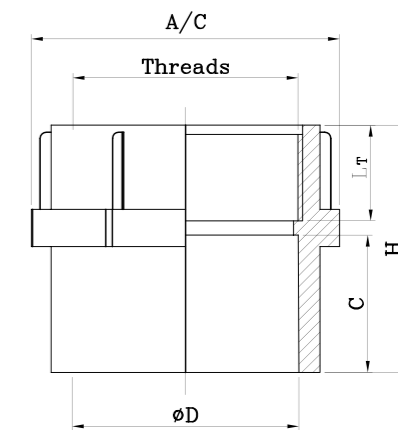


Size	ØD	ØD1	C	H
2 1/2"	73.00	91.60	44.45	55.00
3"	88.90	108.10	47.65	60.00
4"	114.30	136.65	57.15	71.00

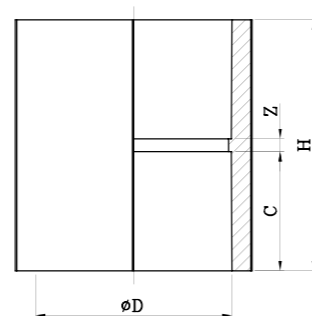
FEMALE THREADED ADAPTOR (SCH-80)



Size	ØD	C	THREADS	Lr	H	A/C
2 1/2"	73.00	44.45	2 1/2" (11-TPI)	31.00	80.00	99.70
3"	88.90	47.65	3" (11-TPI)	34.00	86.00	119.00
4"	114.30	57.15	4" (11-TPI)	40.00	102.00	149.65



COUPLER (SCH-80)

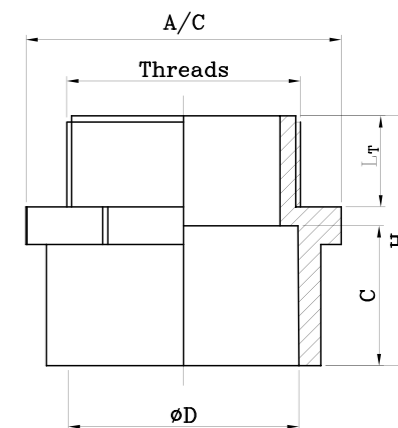


Size	ØD	C	Z	H
2 1/2"	73.00	44.45	4.80	93.70
3"	88.90	47.65	4.80	100.10
4"	114.30	57.15	4.80	119.10

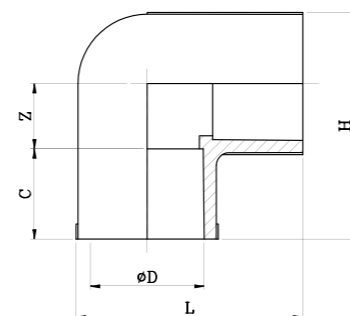
MALE THREADED ADAPTOR (SCH-80)



Size	ØD	C	THREADS	Lr	H	A/C
2 1/2"	73.00	44.45	2 1/2" (11-TPI)	29.00	79.50	100.30
3"	88.90	47.65	3" (11-TPI)	32.00	86.00	120.10
4"	114.30	57.15	4" (11-TPI)	38.00	102.00	151.65



ELBOW (SCH-80)



Size	ØD	C	Z	H & L
2 1/2"	73.00	44.45	38.10	127.25
3"	88.90	47.65	46.05	146.95
4"	114.30	57.15	58.75	182.85

▶ FEATURES & BENEFITS

- ▶ Proven hot water performance from 0°C to 93°C.
- ▶ Manufactured with environment-friendly virgin CPVC compounds.
- ▶ Safe for drinking water.
- ▶ Self-extinguishing. Does not support combustion.
- ▶ UV resistance ensures that pressure and temperature bearing capability remains unaffected even after long term exposure to sun rays.
- ▶ High impact resistance ensures high quality performance at lower temperatures.
- ▶ Fast and easy installation. Saves labour.
- ▶ Lower thermal conductivity.
- ▶ No bacterial growth compared to other piping material.
- ▶ Long Life.

▶ APPLICATIONS

- ▶ Indoor and outdoor use for hot & cold water application (from 0°C to 93°C only).
- ▶ Residential & commercial buildings.
- ▶ Public utilities, swimming pools & industrial applications.
- ▶ RO and DM water plants.

Extensively used in:



MALLS



HOSPITALS



RESIDENTIAL



HOTELS

▶ JOINTING METHODS

PROCESS:

- ▶ Solvent Joint

▶ DOs

CUTTING

It is imperative to mark the pipe from all sides so that pipe is cut with the help of a hand saw. It should be a right angle cut from all the sides. The cut piece should not be with burr on edge.



CHAMFERING

After cutting, the pipe needs to be chamfered from the outer sides. It is advisable to provide approximately 2mm wide, 15° chamfer on spigot end.



DEBURRING AND RIDGE REMOVAL

Remove all the burrs and ridges accumulated on the inner as well as the outer edges of the pipe with the help of a deburring knife, file or abrasive paper.



▶ DON'Ts

CUTTING

Do not cut/slant unevenly.

CHAMFERING

Do not proceed with installation of pipe without chamfering.

DEBURRING AND RIDGE REMOVAL

Do not proceed with the installation of pipe without deburring.



▶ DOs

DRYFIT TEST

Before applying solvent cement, insert the pipe end into the socket of the next pipe or fitting to check that interference occurs at about 1/3 to 2/3 of the socket depth.



CLEANING

Thoroughly clean the pipe with dry cloth where the solvent cement is going to be applied to avoid dust, dirt, oil, moisture and other foreign materials during the installation process.



APPLICATION OF SOLVENT CEMENT

Mark the pipe length to be inserted for joining. Apply a liberal coat of solvent cement with the help of the brush on the marked surface.



JOINTING

Push the pipe inside the fitting / pipe so that it goes inside equally from all the sides. Wipe off excess solvent cement that comes out from all the edges. Hold the joint for one to two minutes so that the jointing is perfect.



INSTALLATION AND COMMISSIONING

Pressure testing may be carried out after a curing period of 24 hrs.

▶ DON'Ts

DRYFIT TEST

Do not apply solvent cement without dryfit test.



CLEANING

Do not join the pipes without cleaning the pipe ends.



APPLICATION OF SOLVENT CEMENT

Do not apply excess solvent cement on the pipe and do not use solvent cement by hand.



JOINTING

Do not use a hammer or half push the pipe.



INSTALLATION AND COMMISSIONING

Pressure testing should not be done before 24 hrs of curing.

▶ JOINTING METHODS



PROCESS:

- ▶ Threaded Joint

▶ DOs

FOR THREADED JOINTS

- Clean the male & female threads.
- Apply teflon tape in the direction of thread tightening.
- Hand-tighten the threads firmly.
- Tighten the joint further by using pipe wrench.
Do not over-tighten.
Use rubber packing to avoid scratches on pipe.

▶ DON'Ts

FOR THREADED JOINTS

Don't over tighten with pipe wrench.

▶ INSTALLATION AND COMMISSIONING



- Pipe line should be installed in proper alignment and along with necessary clamps.
- Pressure testing to be done before concealed work.
- Pressure testing may be carried out after a curing period of 24 hrs and should not be done before that.