

FUSION BIOTECH



2019
2020

Deals in :

All Types of Laboratory
Plasticware & Glassware Items

Our company focus is on being
able to provide our customers with
all their laboratory & Hospital equipments
from a single source.



F-15, STREET No. 1, SAMAIPUR, DELHI-110042



+91- 7303537167, 9821979391



info.fusionbio@gmail.com, sales.fusionbio@gmail.com
Website: www.thefusionbiotech.com

INTRODUCTION

We introduce ourselves as one of the tie-ups Importers, and leading Suppliers in all types of Hospital Equipments and Laboratory Consumables.

Our aim is to provide our customers with high quality products and affordable price. It was started with minimum man power and has developed into medium sized company with efficient promoters and several distributors all over India.

Our Missions The largest independent supplier of hospital equipments & scientific laboratory consumables.

⇒ We can supply all the brands you require.

⇒ Value for money and peace of mind and real cost savings.

⇒ We understand your needs and will match our service levels to them.

⇒ Handled to products complaints. Follow up with dealers, direct customers, orders, dispatches and collection etc.

Our company focus is on being able to provide our customers with all their laboratory & Hospital equipments from a single source.

FUSION BIOTECH Working together for suitable value.



**MICRO CENTRIFUGE
TUBE 1.5 ml.**



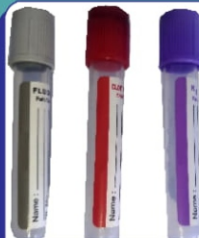
**MICRO CENTRIFUGE
TUBE 2 ml.**



**MICRO PIPPETTE
TIPS 1000 µl
(white/blue)**



**MICRO PIPPETTE
TIPS 200 µl
(white/yellow)**



**BLOOD
COLLECTION
TUBE**



**HITACHI CUP/
SAMPLE CUP**



**CENTRIFUGE TUBE/
FALCON TUBE 50 ml.**



**CENTRIFUGE
TUBE 15 ml.**



**ESR PIPPETTE
RUBBER DISPOSABLE**



**SWAB TUBE
STERILE**



**SWAB STICK
WOODEN**



**PASTURE
PIPETTE
3ml**



**TEST TUBE RACK
D18mm SILICON
(Orange / Blue)**



**URINE/SAMPLE
CONTAINER 30ml.
Routine / Individual Pack**



**URINE/SAMPLE
CONTAINER 50ml.
Routine / Individual Pack**



**RIA VIAL PS
(12 X 75 mm.)**



**MANUAL CENTRIFUGE
MACHINE 4 TUBE**



**ELECTRIC
CENTRIFUGE
MACHINE
8 TUBE
CAPACITY 2000 RPM**



**MANNUAL NEEDLE
DISTROYER**



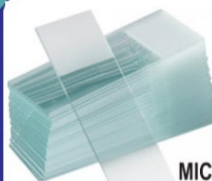
**ELECTRIC
NEEDLE
DESTROYER / BURNER**



**MICROSCOPIC
GLASS SLIDE (IMP.)**



**COVER SLIPS
18x18mm & 22x22mm
22x40mm & 22x50mm**



**MICROSCOPIC
SLIDE (Plain/Frosted)**



**GLASS TEST TUBE
(IMP. & BOROCILICATE)
12 x 75 mm. &
12 x 100 mm.**



**TOURNIQUET
SUPERIOR**



**TOURNIQUET
VELCRO**



LENS CLEANING PAPER



**MICRO PIPPETTE TIPS BOX
(200µl & 1000µl)**



**LATEX
EXAMINATION
GLOVES**



**MICROPIPETTE
FIXED & VARIABLE**



DIAMOND PENCIL



PETRIDISH



SLIDE BOX 25, 50, 100 PLACE



**COUNTING/ NEUBAUER
CHAMBER**



**PLAIN SLIDE
BLUE STAR**



**COVER GLASS
BLUE STAR**



**EMBEDDING
CASSETTE
/ RING**



HEMOCYTOMETER



HB TUBE (ROUND)



**CRYO VIAL
1.8ml**



WINTROBE TUBE



RBC & WBC PIPETTE



HB SQUARE TUBE



PATIENT ID BAND



**SYRINGE DESTROYER
ABS BODY**



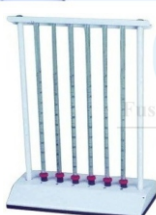
**STEEL
LANCET**



**BLOOD LANCET
(ROUND/FLAT)**



ALCOHOL SWAB



**WESTERNGREEN
ESR STAND**



**THERMAL
PAPER ROLLS/
ECG ROLLS
50mm, 57mm. & 110mm.**



**BLOOD CELL
COUNTER
5 Key & 8 Key**



**BLOOD ROLLER
MIXER**



AUTOCLAVE



MICROSCOPE



PHOTOCOLORIMETER



VDRL SHAKER



INCUBATOR



HIGH ACCURACY DIGITAL TIMER



STOP WATCH



PH METER



SPIRIT LAMP



WINTROBE STAND



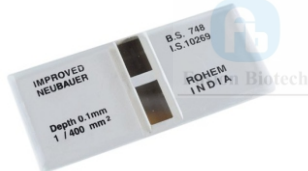
MICROPIPETTE STAND 6 HOLE



MICROPIPETTE STAND WITH TIPS DRAWER



FACE MASK N95



NEUBAR CHAMBER ROHEM INDIA



HAEMOMETER MARIENFELD



TEST TUBE STAND 3 TIER



TEST TUBE BRUSH ALL SIZES



SURGICAL CAP



WASH BOTTLE



BEAKERS ALL SIZE

BRANDS:

PolyLab®
plastic labware

PARAFILM.

SUPERIOR
MARIENFELD
LABORATORY GLASSWARE

HANNA®
instruments

