



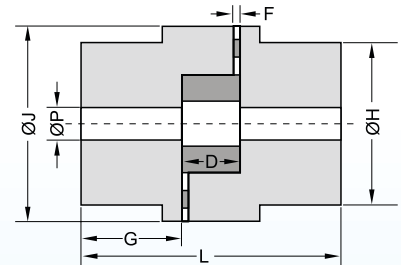
# GOYAL ENGINEERING COMPANY

## UNIQUE JAWFLEX COUPLINGS RANGE

### TYPE - 'L'

#### Standard star / spider couplings

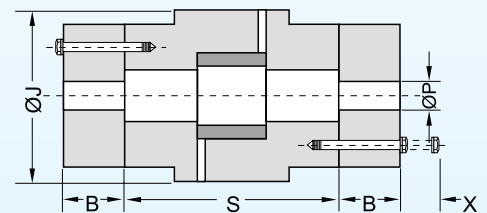
- ♦ Widely accepted star/spider design.
- ♦ Low weight to high torque ratio.
- ♦ Easy for alignment of equipments.
- ♦ Ranging up to torque of 24 kg-m capacity.
- ♦ Range of S-226 to 350 under development.



### TYPE - 'RRL'

#### CI Spacer coupling

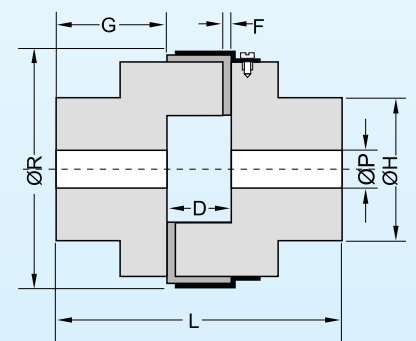
- ♦ Spacer coupling with star/spider design.
- ♦ Recommended specially for back pull out pumps & when the distance between shafts is more than the standard.
- ♦ Capacity up to 24kg-m of torque.
- ♦ Easy replacement of spider without removing equipment from base. Thus less down time.
- ♦ H.T. fasteners used.
- ♦ Available in various spacer lengths of 75,90,100,135, 140, 180 mm.
- ♦ Also recommended where disconnection of driver & driven is required.



### TYPE - 'SW'

#### External spider coupling

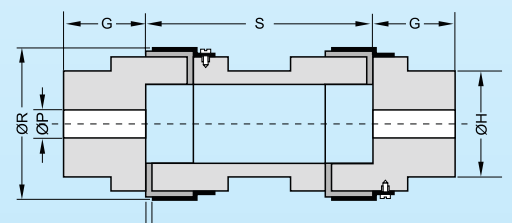
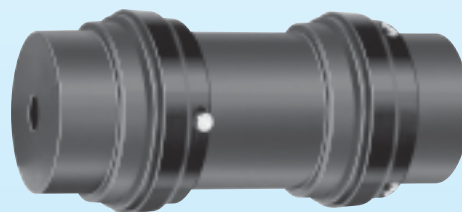
- ♦ Instead of a star, a strip/snap is provided which fits in the coupling from outside and can be replaced without disturbing the driver & driven unit.
- ♦ Practically no down time for replacement/inspection of the strip.
- ♦ A seamless retainer ring provided for proper location & stability of snap.



### TYPE - 'RRS'

#### Aluminum spacer coupling with external spiders

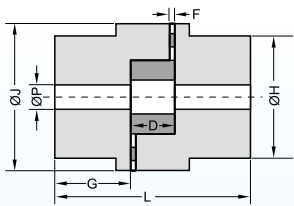
- ♦ Spacer coupling with easy to remove snap design.
- ♦ Suitable for back pull out design pumps.
- ♦ Spacer of Aluminum to reduce load on the extended shafts.
- ♦ Can take larger mis-alignments because of two flexible membranes.



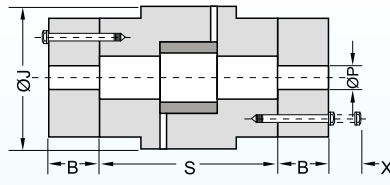


# GOYAL ENGINEERING COMPANY

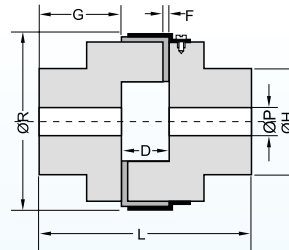
## UNIQUE JAWFLEX COUPLINGS TECHNICAL DATA



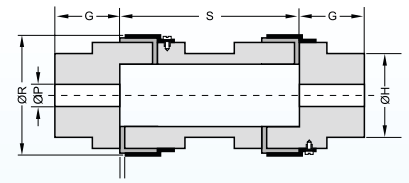
**L- TYPE**



**RRL- TYPE**



**SW- TYPE**



**RRS- TYPE**

TYPE	SIZE	RATED HP AT			RATED TORQUE kg-m	BORE SIZE ØP		WEIGHT** kg CI PILOT BORE COUP	JAW DIA ØJ	RING DIA ØR	TOTAL LENGTH L	HUB DIA ØH	LENGTH THROUGH BORE G	LENGTH OF BUSH B	SPACER LENGTH S	GAP BET. JAW & BODY F	BOLT EXTEN. X	DIST. BETWEEN SHAFTS D***	
		1000 rpm	1500 rpm	3000 rpm		PILOT	MAX												
L	50	0.3	0.5	0.9	0.21	5	16	0.24	27	-	42	27	15	-	-	1	-	12	
	75	1.0	1.5	3.0	0.71	9	22	0.45	44.5	-	56	39	21	-	-	2	-	14	
L RRL SW RRS	95	2.8	4.2	8.4	2.00	10	28	0.80	54	64	63	49	25	25	75/90/100/140	2	15	13	
	99	4.0	6.0	12.0	2.86	10	30	1.10	65	77	72	51	27	-	-	2	-	18	
	100	6.0	9.0	18.0	4.29	10	38	1.50	65	77	88	57	35	30	75/90/100/135/140	3	15	18	
	110	11.0	16.5	33.0	7.87	15	*42	3.20	85	96	108	76	43	35		3	20	22	
	150	17.0	25.5	51.0	12.17	15	*48	4.00	96	111	115	80	45	45	75/90/100/135/ 140/180	3	20	25	
	190	22.0	33.0	66.0	15.75	20	*60/*55	7.50	115	129	133	102	54	51		3	24	25	
	225	33.0	49.5	99.0	23.62	20	*65	10.00	127	142	153	108	64	57		3	24	25	
L RRL SW RRS	226	46.0	69.0	138.0	32.93	25	70	13.00	137	142	178	115	70	50	75/90/100/135/ 140/180	3	30	33	
	276	73.0	109.5	219.0	52.26	25	75	19.00	157	162	200	127	80	60		3	20	40	
	280	110.0	165.0	330.0	78.76	30	80	44.00	192	197	200	140	80	60		3	-	40	
	295	180.0	270.0	540.0	128.88	30	95	50.00	237	244	238	160	95	80		3	-	48	
	2955	300.0	450.0	900.0	214.80	30	100	55.00	237	244	264	180	108	80		3	-	48	
	300	434.0	651.0	-	310.74	30	100	UNDER											
	350	611.0	916.0	-	437.47	30	115	DEV.											

\* For triangular hubs max bore are 24,32,38,42 mm resp.

\*\*\* For non-spacer couplings only.

All dimensions are in mm.

## GOYAL ENGINEERING COMPANY

Add. : C-170, MAYAPURI PHASE -2 , NEW DELHI-110064 (INDIA)  
 Ph. : 01145541311,01145515633 Fax : 01145541311 Mob. : 09873361668  
 Website : [www.uniquecouplings.in](http://www.uniquecouplings.in)  
 Email : [goyalenggco@yahoo.com](mailto:goyalenggco@yahoo.com), [uniquecoupling@yahoo.com](mailto:uniquecoupling@yahoo.com)