



a house of total solution for material handling equipment, Scissor Lift Platform, Aluminium Scaffold, Ladder, Fiber (FRP) Ladder, Tower ladder, Trolley

Sumer[®] AXIS

AERIAL
MAINTENANCE
PLATFORM
(Double MasT)



www.sumerindia.com



Profile

'SUMER Handling Equipment' is a concern started in 1960, which is exclusively dealing in all types of Material handling equipments under its own brand name 'SUMER' which have established a name in the market for quality products and excellent after sales service. Our quality professionals are deeply involved in ensuring zero defect

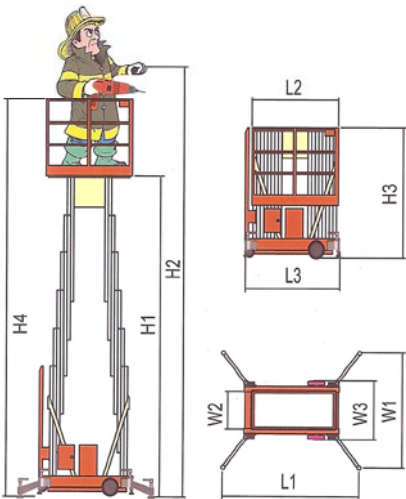
Clients

We have a respectable list of MNC's and indigenous clients all over the country as well as defense, railways & other government sector, who insist on buying from us all your equipments in order to ensure trouble free production free production in their plants, and excellent service after sales.

Aerial Maintenance Platform:

All models are available in Battery operated lifting (DC) or single phase

Sumer®

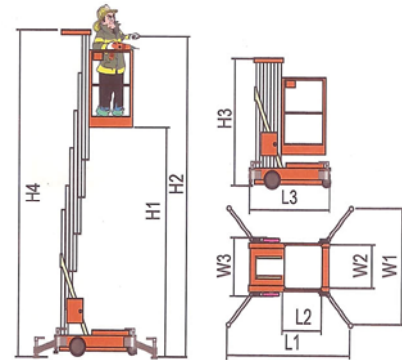


Double Mast Platform

This is suitable for 1-2 persons to work on full height with some small tools and tackles. Height is available 6m, 8m, 10m, and 12m, and platform size is around 1200/1400 X 600mm.

Single Mast Platforms

This is suitable for single person with some small tools & tackles. Height in this version is available only up to 6m & 8m., due to safety reasons. Platform size is around 630 x 650 mm.



Specifications

Aerial Maintenance Platform

TYPE	MODEL	Loading Capacity	Max. Platform Height H1	Max. Working Height H2	Person Allowed	Platform Dimention L2 X W2	Max. Machine Height H4	Stowed Dimention L3 x W3 x H3	Outspread Size L1 X W1	Lifting Motor (Power Source)		Battery	Charger	Self Weight Kg	
										AC	DC			V/Ah	V/A
DOUBLE MAST	TMMP 3.60	300	6	7.7	2	1210 x 600	7.05	1560 x 840 x 1810	1650 x 1690	220v / 1.5 KW	12v / 2.5 KW	2 x 12v / 75Ah	12v / 15 Ah	570	610
	TMMP 3.80	300	8	9.2	2	1210 x 600	9.05	1560 x 840 x 1910	1770 x 1880					630	670
	TMMP 3.10	250	10	11.7	2	1450 x 600	11.05	1790 x 840 x 1910	1960 x 2230					730	770
	TMMP 2.12	200	12	13.7	2	1450 x 600	13.05	1790 x 890 x 2030	2570 x 2550					825	865
SINGLE MAST	TMMPS 1.60	125	6	7.7	1	630 x 650	7.35	1420 x 840 x 1920	1870 x 2030	220v / 1.5 KW	12v / 2.5 KW	2 x 12v / 75Ah	12v / 15 Ah	375	415
	TMMPS 1.80	125	8	9.7	1	630 x 650	9.46	1420 x 840 x 2040	1870 x 2030					410	450



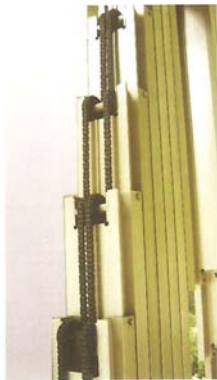
mechanism system

Aerial Maintenance Platform

safety features



Heavy Duty Alloy Aluminum Masts and twin chains ensure the Double safety of lifting & lowering mechanism.



A high quality world class hydraulic power pack, equipped with all safety controls ensures personal safety on the platform. Automatic oil bleeding system after reaching full height, (if electric limit switch fails) is also provided for further safety.



This level gauge helps to ensure leveling of the platform by screwing out riggers before raising. Leveling can be done by Out Rigger Screws, if floor is uneven.



Folding type Out Riggers are provided for keeping the platform stable and quite safe, while in raised position. These Out riggers are connected to the corners of the chassis with automatic pin locking system by which no out rigger will come out while moving the platforms & out riggers are again automatically locked in fully open position.

Railing locking system by Heavy duty screws is provided on all the four corners of the platform. This screw system is more safe, reliable, and no replacement / maintenance is required for many years.



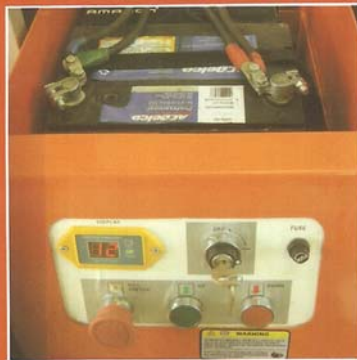
Aerial Maintenance Platform

electrical system

In AC Model, the control panel is of an international standard design with simple & safe controls. No cumbersome electric devices are provided, as to avoid break downs and unnecessary maintenance. An 'ON' 'OFF' key is also provided to prevent the misuse of unit.



In Dc model, a DC Control Panel having all characters same as in AC Panel & battery charging indicator with two 12 volt, maintenance free world famous Batteries, which ensure working of platform any where without availability of electric supply.



A high quality limit switch ensures cut off the power supply when platform reaches its optimum height. Safe control voltage (24 V) is in the circuit.

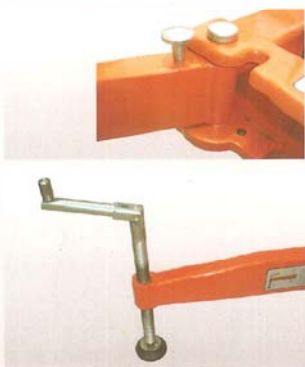


A pendant with all controls and emergency stop is provided on the platform which ensures independent working by the operator and after pushing the lock push button, no one can operate the platform from the floor, which ensures 100% safety while working on heights.



When working on heights and power supply/Batteries fails, an emergency release valve is provided for Lowering the platform from bottom chassis.

comfort & convenience



No tools, Keys, or spanners are required to open the out riggers. Within 20 seconds all out riggers can be opened very easily by single person.

Its convenient to screw all the Out Riggers to touch the floor for leveling, Rubber pads are fitted in the bottom of screw for firm grip with floor.



The platform is light weight and very easy to move any where by a single person only. Here it shows the open position of railings on platform which needs much height of doors to enter.



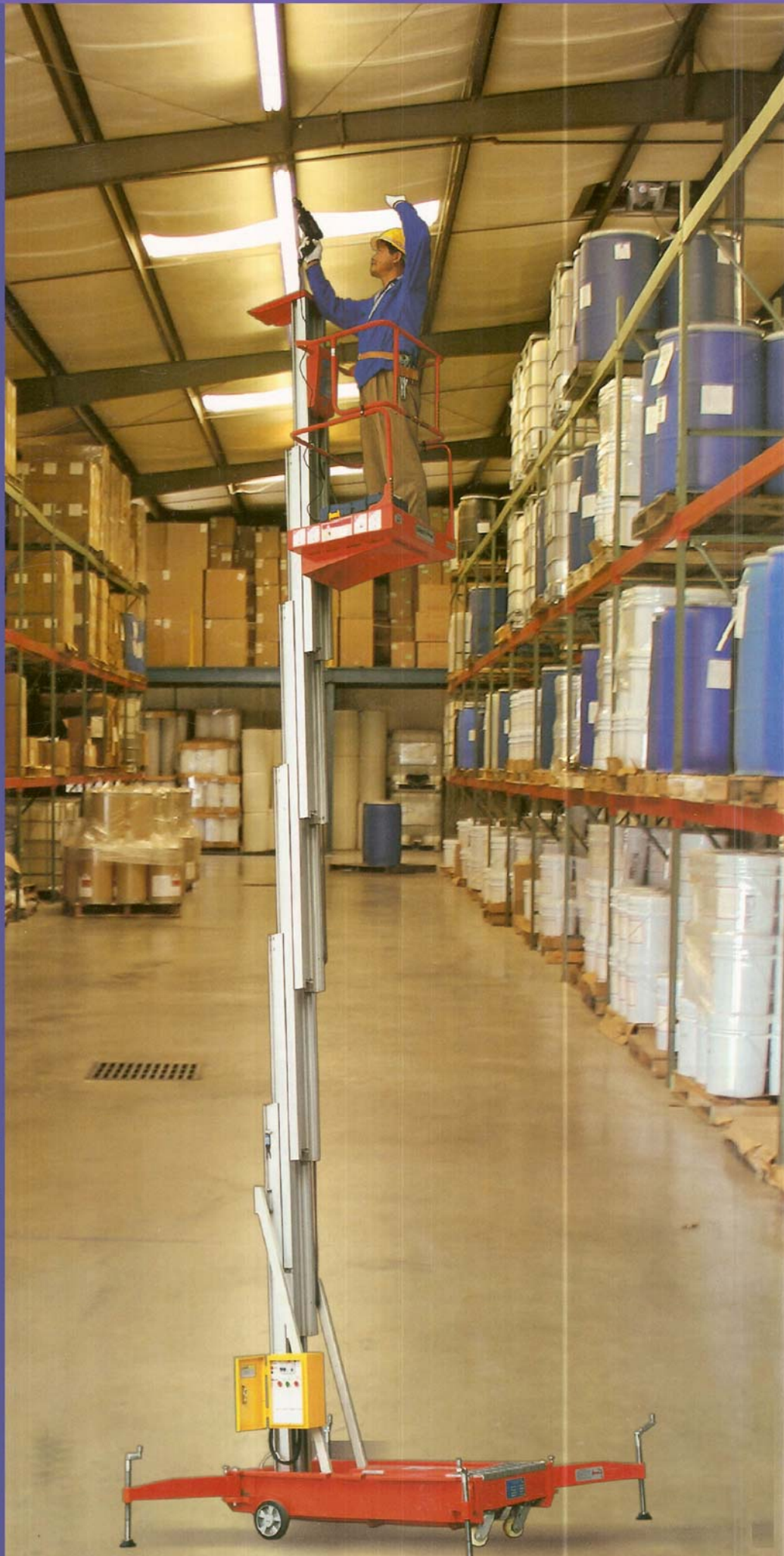
Railings can be folded in the platform, so, it can enter in low height gates, even around 2mtr. clear space, which makes this machine very handy & can have access any where in plants, godowns etc., conveniently.

Sumer® AXIS

AERIAL
MAINTENANCE
PLATFORM
(Single Mast)



a house of total solution for material handling equipment, Scissor Lift Platform, Aluminium Scaffold, Ladder, Fiber (FRP) Ladder, Tower ladder, Trolley



Sumer

Sumer & Co. (Regd.)

3477 Gali Bajrang Bali, Chawri Bazar, Delhi-6 (INDIA)

Tel: 011-23267598, 23266973 Fax: 011-23279661

E-mail: climb@sumerindia.com, sajal@sumerindia.com

visit us : www.sumerladder.com, www.sumerindia.com

All Design & Materials of products shown in this Catalogue, are Subject to alteration without prior notice.

