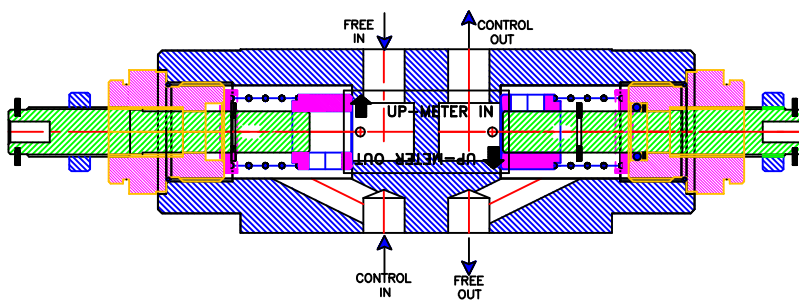
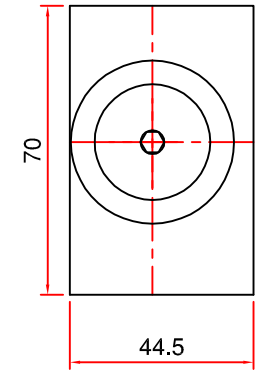
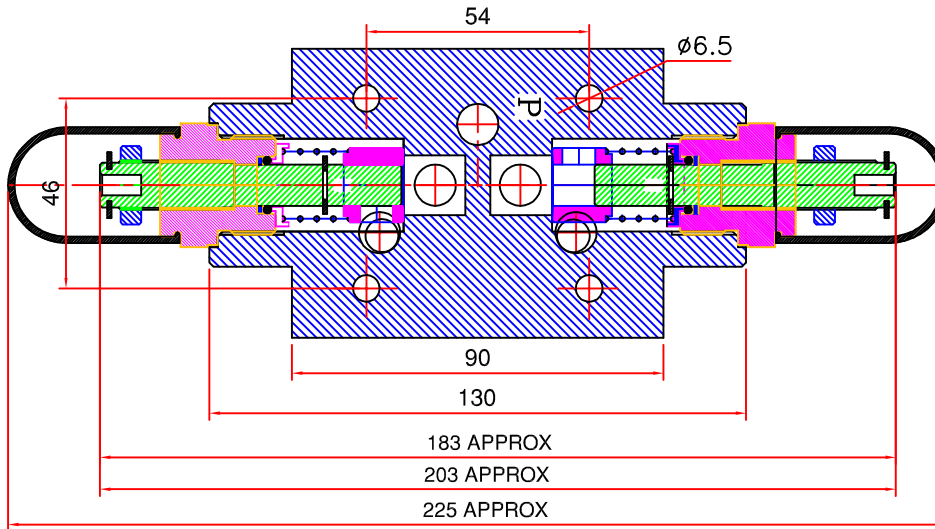
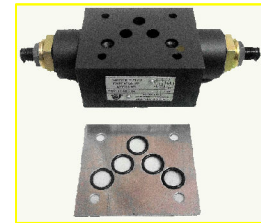


# JACKTECH FLOW CONTROL & CHECK VALVE (MODULAR)

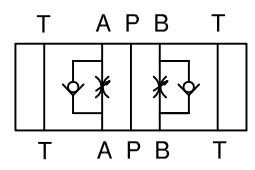
## 1, DESCRIPTION

Double Throttle / Check Valve. Non pressure compensated, Modular construction. Can be used for METER - OUT or METER - IN applications.

## 2, UNIT DIMENSIONS



### Hydraulics Symbol



## 3, TECHNICAL SPECIFICATIONS

- Construction-----Modular , Spool type Non- pressure compensated.
- Mounting-----Modular type.
- Mounting position-----Optional
- Direction of flow-----For ports P & T Free flow in either direction  
For ports A & B Free flow in one direction  
Adjustable throttled flow in opposite direction as indicated on the valve dial plate.
- Operating pressure-----315 bar for all ports.
- Viscosity range-----10 cSt to 380 cSt
- Nominal flow handling capacity-----60 Ltrs./Min.

## 4, ORDERING CODE

TCM-10 AB-01

