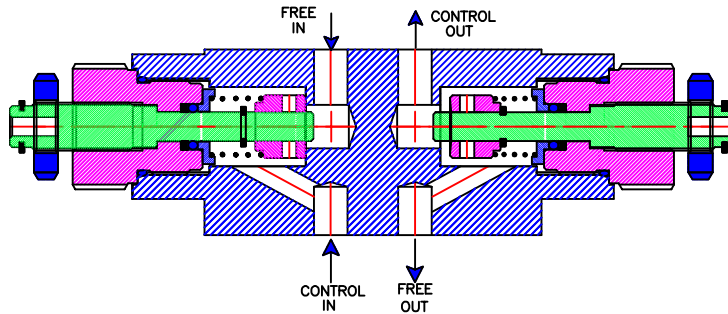
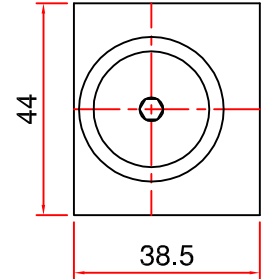
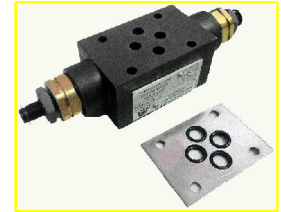
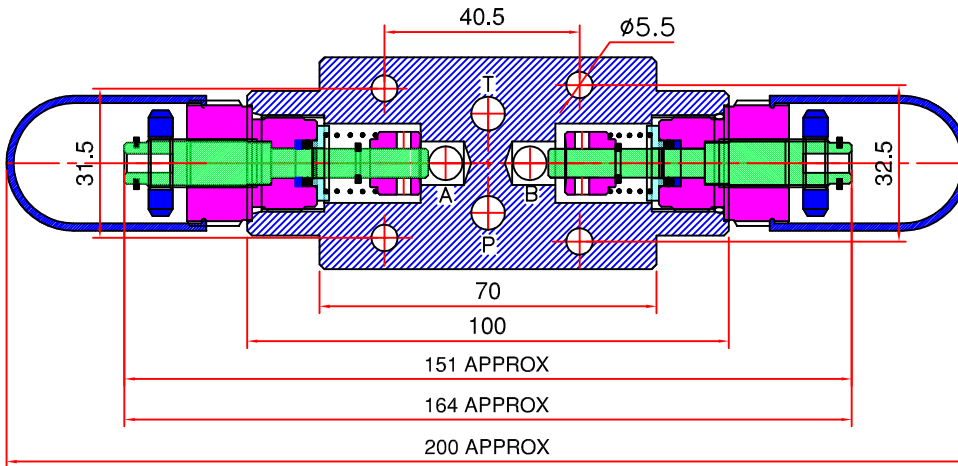


JACKTECH FLOW CONTROL & CHECK VALVE (MODULAR)

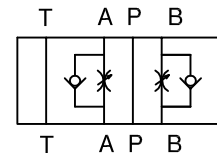
1, DESCRIPTION

Double Throttle / Check Valve. Non pressure compensated, Modular construction. Can be used for METER - OUT or METER - IN applications.

2, UNIT DIMENSIONS



Hydraulics Symbole



3, TECHNICAL SPECIFICATIONS

Construction-----Modular , Spool type Non- pressure compensated.

Mounting-----Modular type.

Mounting position-----Optional

Direction of flow-----For ports P & T Free flow in either direction

For ports A & B Free flow in one direction

Adjustable throttled flow in

opposite direction as indicated

on the valve dial plate.

Operating pressure-----315 bar for all ports.

Viscosity range-----10 cSt to 380 cSt

Nominal flow handling capacity-----30 Ltrs./Min.

4, ORDERING CODE

TCM-06 AB-01

