

interweave
with
nature

AludecoR
ACE
SERIES
6 mm ACPs

AludecoR
TIMBER
SERIES
Wood-like ACPs

AludecoR
PEDRA
SERIES
Stone-finish ACPs

AludecoR
Metal Composite Panel

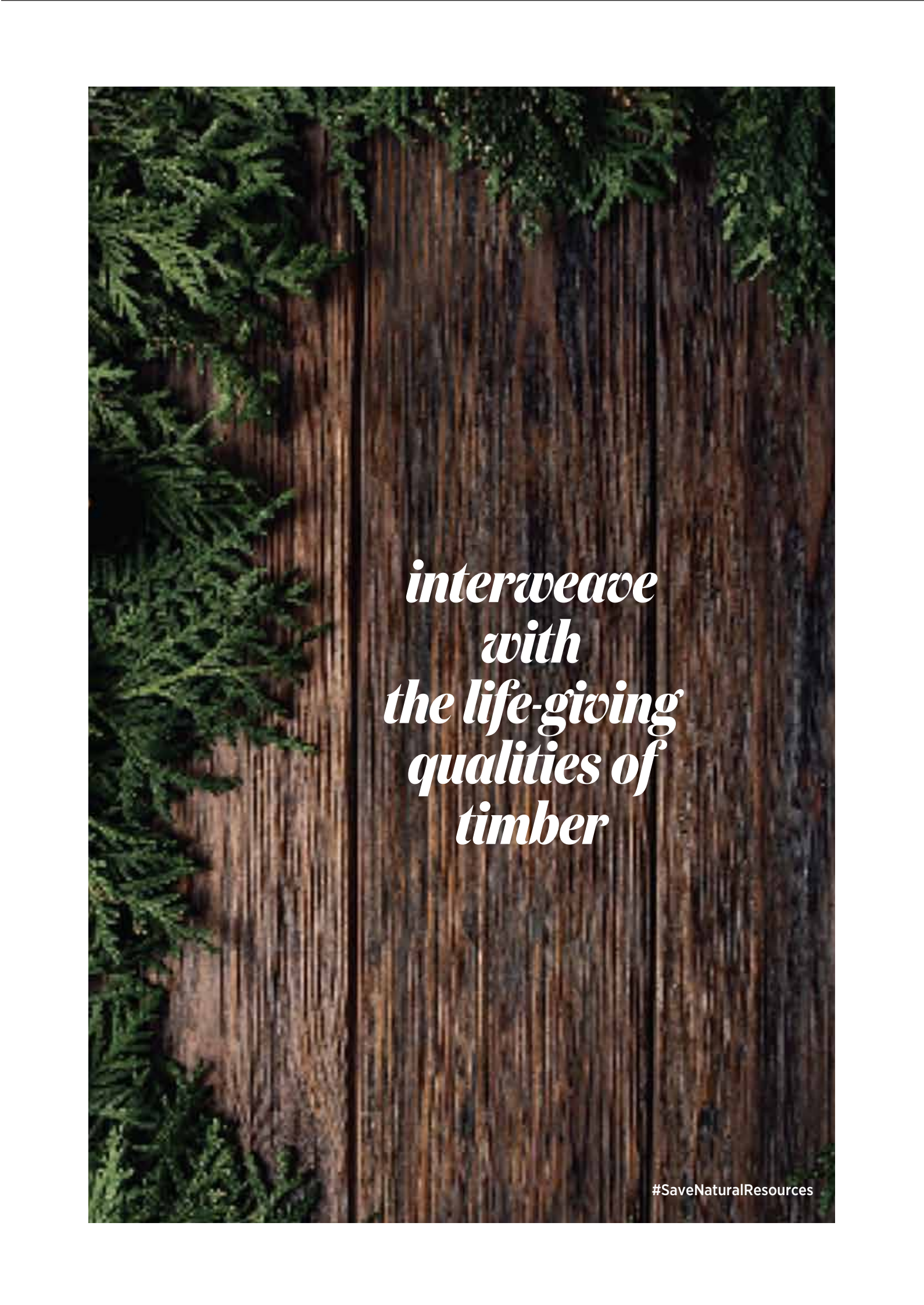


Interweave Sustainability

For as long as humans have built homes, we have brought nature inside with us, inspired by the concept of biophilia - the love for nature.

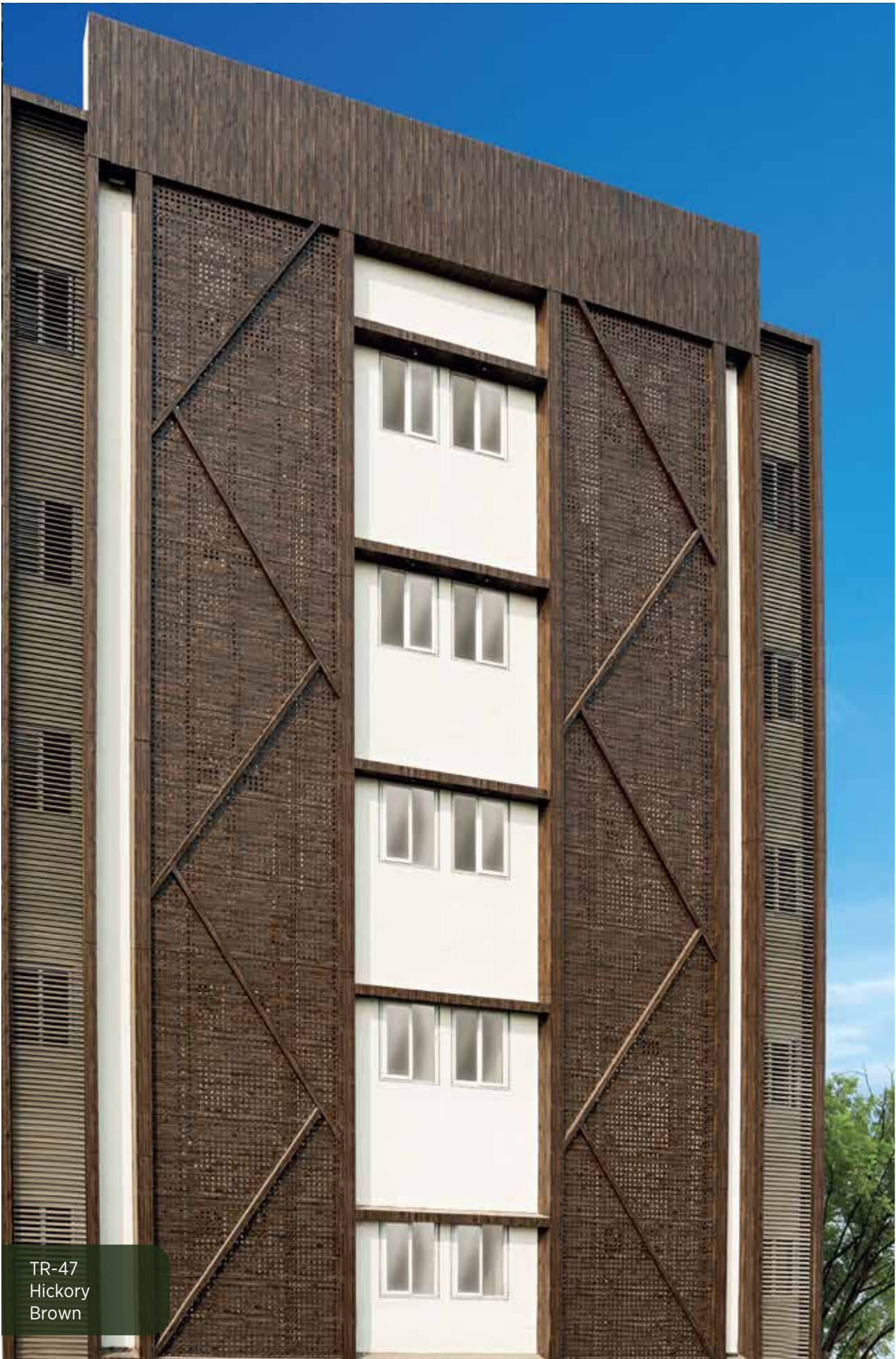
Stone and wood have been used as building materials for thousands of years, reminding us of the soulful woods and cascading waterfalls of the natural world. Through age-old techniques, our ancestors used these materials to construct their homes.

With the exponential growth of the human population, valuable resources such as stone and timber have been over-harvested to the point of depletion. At Aludecor, we encourage you to continue incorporating the elements of stone and timber into your homes, but without causing any harm to nature or depleting its natural resources.



*interweave
with
the life-giving
qualities of
timber*

#SaveNaturalResources



TR-47
Hickory
Brown

Teak



TR-58
Congo
Teak



TR-59
Angola
Teak

Also available in
HPL (6 mm)

Oak



TR-57
Rustic
Oak



TR-49
Joburg Knotty
Brown

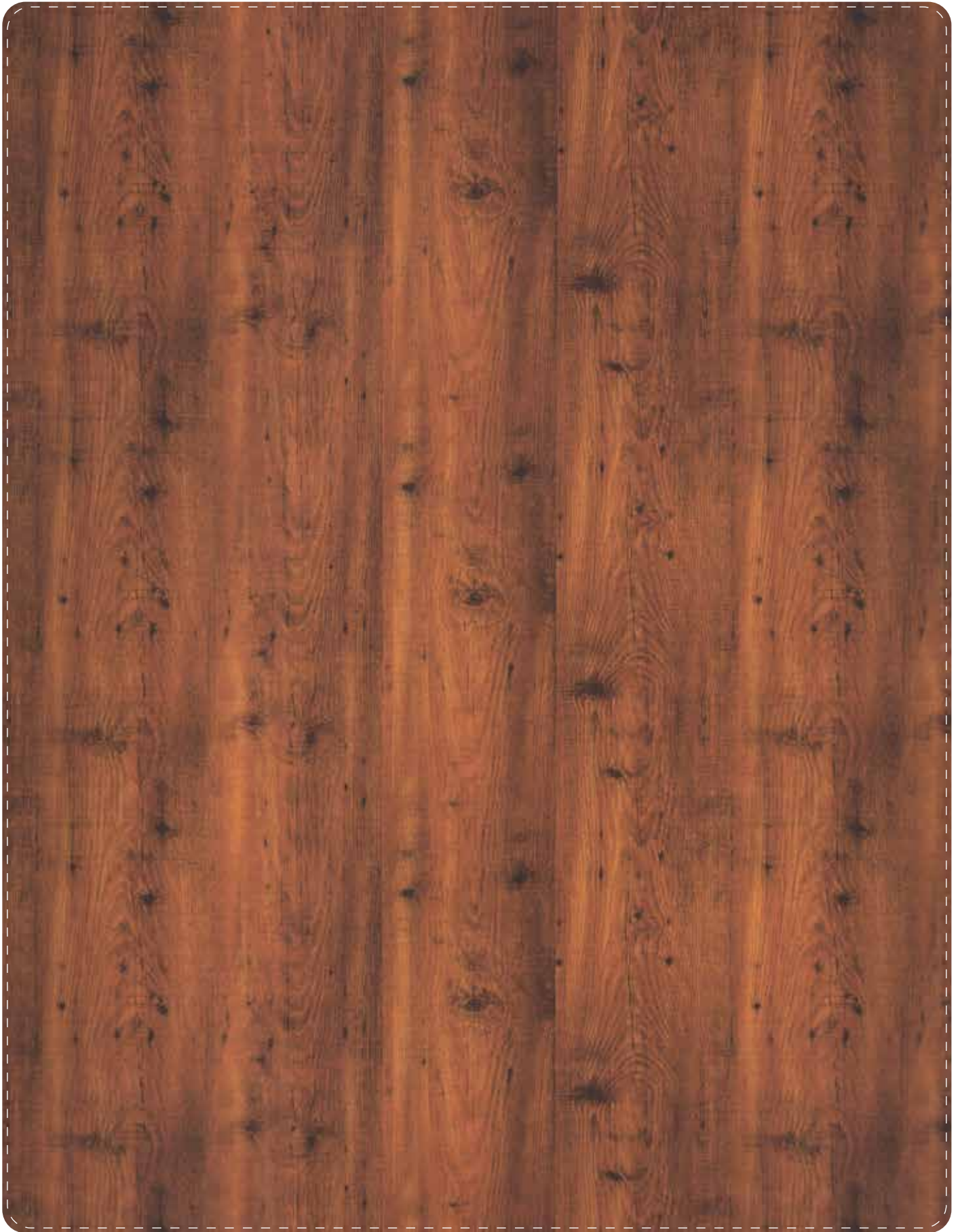


TR-47
Hickory
Brown

Also
available in
HPL (6 mm)



Pine



TR-46
Classico
Pine

Also available in
HPL (6 mm)



TR-02
Country
Pine



TR-03
Teak
Coffee



Burl



TR-42
Crotch Burl
Light

Also available in
HPL (6 mm)



TR-44
Crotch
Burl Dark

Also
available in
HPL (6 mm)



TR-43
Crotch
Burl

Also
available in
HPL (6 mm)

Teak



TR-30
Cocoa
Teak

Also available in
HPL (6 mm)



TR-23
Java
Teak



TR-24
Eternal
Teak



TR-31
Sharun
Teak

Also
available in
HPL (6 mm)



 TR-1
Mahogany
Red



TR-12
Cherry Cherry





TR-06
Auburn
Afro



TR-13
Cocoa
Beech



TR-17
Colonial
Maple



TR-19
Mellow
Maple





TR-04
American
Walnut

Also
available in
HPL (6 mm)



TR-25
Plush
Walnut



A timber encased home

This timber encased property inspires calmness and sparks joy. High quality Timber ACP sheets were used to create the exterior facade of the house, giving this property the look and feel of it being constructed with timber.

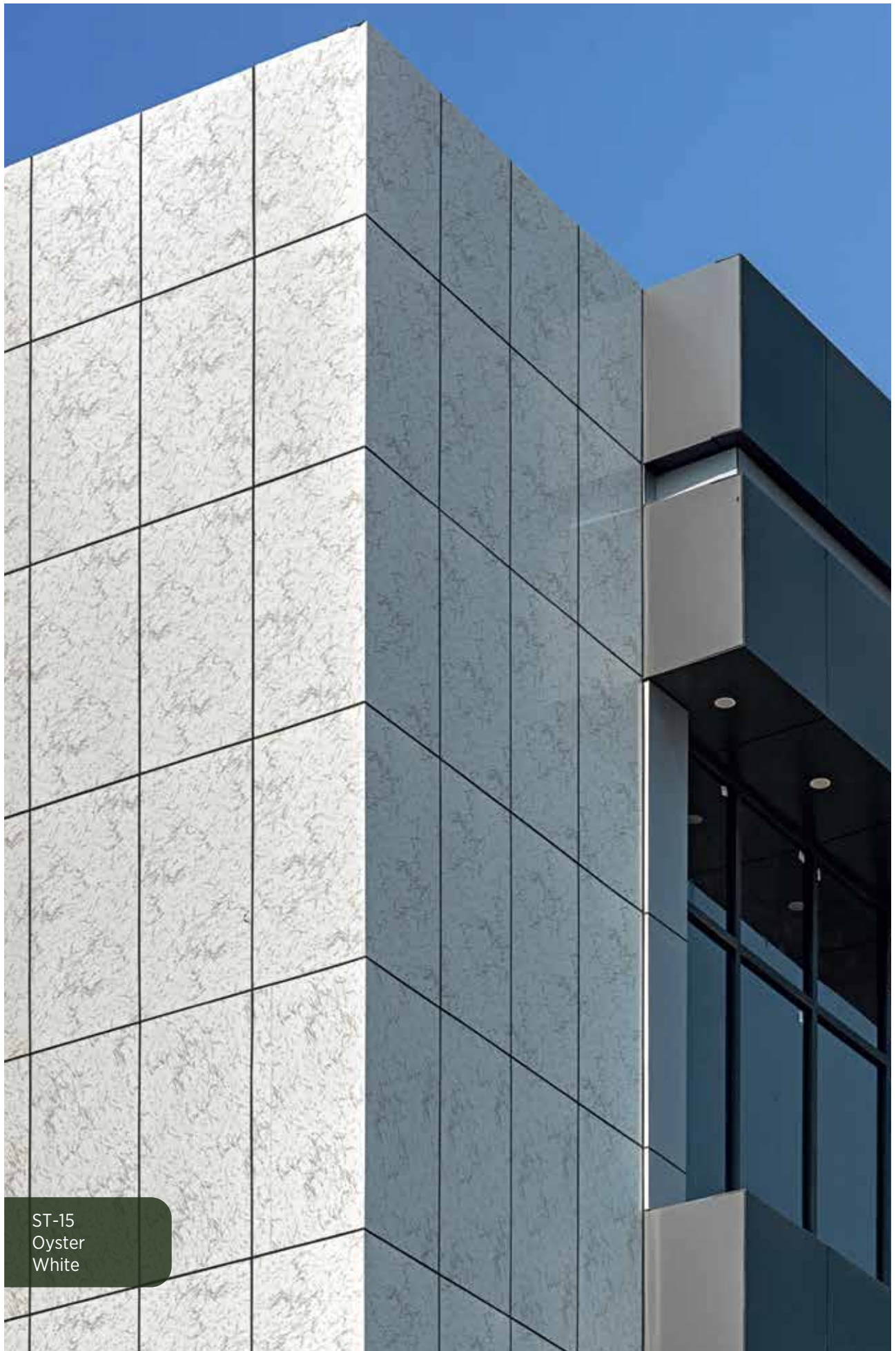


TR-49
Joburg
Knotty Brown



*interweave
with
the calming
properties
of stone*

#SaveNaturalResources



ST-15
Oyster
White



ST-15
Oyster
White



ST-20
Armani
Grego

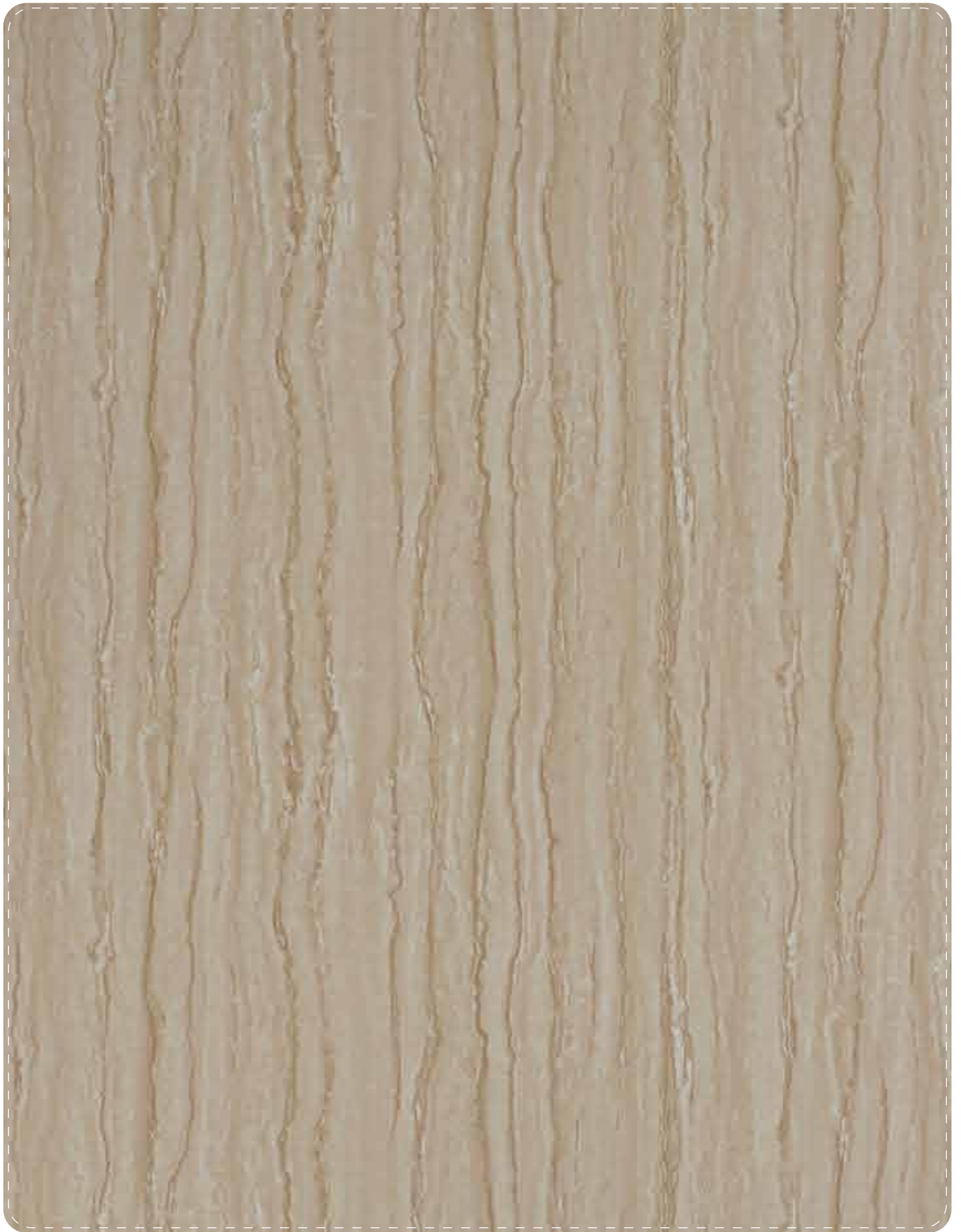


ST-21
Armani
Cappuccino

Also
available in
HPL (6 mm)



ST-22
Armani
Wine



ST-27
Rosso
Opaco



ST-25
Oyster
Gold



ST-01
Chianti
Beige



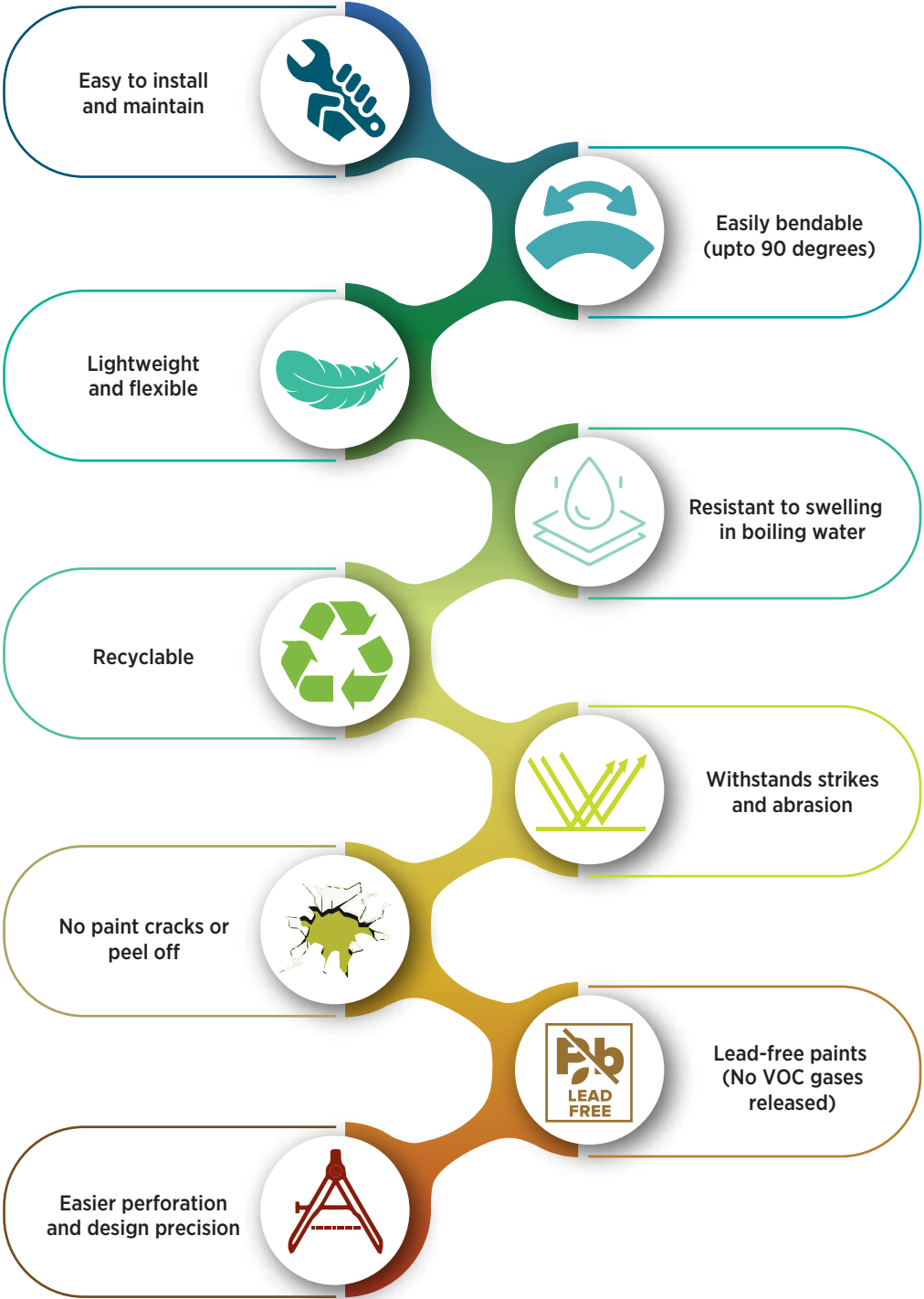
ST-28
Swiss
Snow



The grandeur of stone pillars

This railway station in Assam, has a majestic entrance. Tall, imposing stone finished pillars made of Pedra ACP greet millions of passengers as they enter the station complex. Aludecor has been widely appreciated for providing its high quality, industry leading ACP sheets for this station complex.

Product Highlights



**Terms and conditions apply.*

For more details scan this qr code



Product Specifications

Sl. No.	Particulars	Product Composition						
		AL 63	AL 45	AL 43	AL 33			
1	Product Grade	AL 63	AL 45	AL 43	AL 33			
2	Total Thickness Of The Panel	6 mm	4 mm	4 mm	3 mm			
3	Thickness Of The Aluminium Skin (Top Skin/ Bottom Skin)	0.25 mm	0.5 mm	0.25 mm	0.25 mm			
4	Thickness Of LDPE/Mineral Core	5.5 mm	3 mm	3.5 mm	2.5 mm			
5	Grade Of Aluminium Skin	AA1100 (Supplier-Hindalco)	AA3105 (Supplier-Hindalco)	AA1100 (Supplier-Hindalco)	AA1100 (Supplier-Hindalco)			
6	Coating Thickness (Front Coil)	30 μ - 35 μ Three Coat Paint System Suppliers AkzoNobel/PPG/ Beckers/Nippon	30 μ - 35 μ Three Coat Paint System Suppliers AkzoNobel/PPG/ Beckers/Nippon	30 μ - 35 μ Three Coat Paint System Suppliers AkzoNobel/PPG/ Beckers/Nippon	30 μ - 35 μ Three Coat Paint System Suppliers AkzoNobel/PPG/ Beckers/Nippon			
7	Coating Thickness (Back Coil)	4 μ - 7 μ Service Coat	4 μ - 7 μ Service Coat	4 μ - 7 μ Service Coat	4 μ - 7 μ Service Coat			
8	Product Tolerance	Width	Length	Thickness		Squareness	Bow	
				Coil	Panel		AL 45	AL 63, AL 43 & AL 33
		± 2.0 mm	± 4.0 mm	± 0.03 mm	± 0.2 mm	Maximum 5.0mm	Maximum 0.5% of width and/or length	Maximum 0.8% of width and/or length

AludecoR
Metal Composite Panel



Head Office

Kolkata

Martin Burn Building, Suite 52, 5th Floor, 1 RN Mukherjee Road,
Kolkata 700001, West Bengal.
P +91 33 4027 6600

Works

Haridwar

(Unit 1) Plot 95 | 96 | 97 Sector V IIE Sidcul Ranipur BHEL
Haridwar Uttarakhand 249403
P +91 1334 239 343

(Unit 2) Plot 31A Sector 11 IIE Sidcul Ranipur BHEL
Haridwar Uttarakhand 249403

(Unit 3) Industrial Plot No 23 Industrial Park IV Begampur
Pargana Roorkee Haridwar Uttarakhand 249405

Toll Free 1800 102 0407
info@aludecor.com | aludecor.com
CIN: U27203WB2004PTC099221

Zonal Offices - Chennai, Mumbai, New Delhi
Branch Offices - Ahmedabad, Bangalore, Guwahati, Hyderabad,
Indore, Jaipur, Kochi, Lucknow & Pune.



Scan for Zonal & Branch address
W aludecor.com/branch-locator



Scan this to enquire
W aludecor.com/enquiry

A percentage of the proceeds from our sales is forwarded towards welfare purposes.



Follow us on



Best Practices Award from the European Society for Quality Research (ESQR), for Quality, R&D, Meticulous Test Metrics, First-rated Industry Practices and Best-in-class Products, received at Brussels, Belgium.

AludecoR



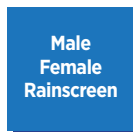
Customised digital support

Get 3D previews
of the interiors and exteriors
you wish to fabricate and more . . .

Visit aludecor.com
Go to the Support Section
Click on the Design Assist Section
Follow step-by-step instructions
for fabrication ideas
. . . absolutely FREE!



Aludecor Systems are versatile and can be assembled quickly. It is a concealed fixing system of the following type . . .



Aludecor MCPs can come in both Aludecor Firewall A2 and Aludecor Firewall. These are Factory Production Control Certified from Emirates Safety Laboratory (ESL) for Reaction to Fire classifications of EN 13501-1 Class A2-s1, d0 for Aludecor Firewall A2 and EN 13501-1 Class B-s1, d0 for Aludecor Firewall. Aludecor Firewall is also having a product range which is Factory Production Control Certified from ESL for Class B1 in accordance to DIN 4102.

#BeatTheFire

*Aludecor FireWall A2 has fireproof properties close to metals.