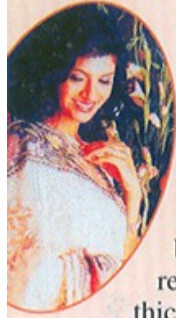


OUR
HERBAL PRODUCTS
AT A GLANCE



NTT

SAFE HERBAL TENTS



N.T.T. is the original research product of SYNTHOCHEM which has revolutionised the concept of M.T.P. The simplicity and safety of the method has made it unique.

DESCRIPTION

N.T.T. resembles in size and shape with laminaria Tent but it has been coated with herbal extracts which are responsible for its action. N.T.T. is available in various thicknesses owing to variable size of each uterus. The doctor has vast choice of selection of size of N.T.T. according to size of uteri. The size of uterus varies according to age and physique of the woman, period of gestation and parity.

COMPOSITION

Every Tent contains:

Ext. Danti (B. Axillare)	5%	Ext. Abroma	25%
Ext. Pippli (P. Longam)	5%	Ext. Plumbage Rosea	20%
Ext. Aloe	37%	Ark Kshir	q.s.

MODE OF ACTION

The ingredients of outer coating of N.T.T. get dissolved in the mucous present in endometrium within few minutes of its insertion into the uterus via OS. These ingredients produce pains resembling to labour pains. The uterus undergoes rhythmic contractions and relaxations. The action leads to dilatation of cervix, detachment of embryo and finally expulsion of the contents of uterus.

STERILISATION

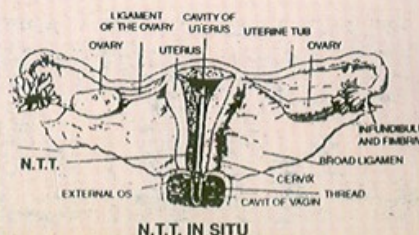
Although ingredients of N.T.T. mainly plumbagin present in P. Rosea is antiseptic and supposed to keep the device sterile but for 100% safety, immersing of N.T.T. for about 6 to 8 hours of alcohol, anaesthetic ether or chloroform is advised. The ingredients of outer coating of N.T.T. do not dissolve in these disinfectants although these are solvents by nature.

METHOD OF INSERTION

The patient is kept in lithotomy position and the cervix is exposed by Sim's vaginal speculum. The anterior lip of the cervix is held with a sponge holder and the tent is inserted into the uterus via cervical OS a little beyond the internal OS. As the length of the nongravid uterus is 7.5 cm and N.T.T. measures 6.3 cm, there is no risk of perforation of uterus if properly inserted. A dried sterile gauze is tied between the threads of the tent to make sure that the tent will not slip into the uterine cavity. The N.T.T. in situ is shown in the following figure :

POST INSERTION PRECAUTIONS

A course of antibiotic and/or sulphonamides along with A.T.S. must be given routinely as done during other surgical operation.



N.T.T. IN SITU

INDICATIONS

1. Medical termination of pregnancy
2. Induction of labour-safety of the foetus has not been studied. So it should be only done in intrauterine foetal death.

CONTRA-INDICATIONS

Carcinoma Cervix, Ectopic gestation, severe anaemia, bleeding tendency, during active stage of infection cervicitis due to pelvic infection/physical/chemical agents.

WARNING

If there is no response within 12 hours of insertion, second N.T.T. may be tried. Diagnosis of pregnancy must be confirmed by urine test routinely in 1st trimester of gestation. In case of misdiagnosis of false pregnancy, N.T.T. may not produce contractions in the uterus, labour like pains and consequently no bleeding. In 2nd trimester of pregnancy diagnosis must be confirmed by radiological or ultrasonographical techniques, to avoid misdiagnosis for ectopic gestation and pelvic/abdominal tumors/growths. If profuse bleeding occurs prior to clearance of product of conception (P.O.C.) curettage must be performed without further waiting for outcome. If severe bleeding occurs after clearance of P.O.C. this is indication of retention of a part or in full of placenta. In such cases after manual examination in completely sterile conditions curettage must be performed. I.V. fluids with Calcium Gluconate such as injection Calcium Sandoz be given along with other haemostatic injections and tablets. If after 72 hours of insertion, there is no clearance of P.O.C. curettage must be performed to avoid sepsis and related complications.

COMPLICATIONS

No major complications such as cervical tear, profuse bleeding p.v. pelvic, sepsis, shock and mortality has been reported. Rise of mild temperature has been reported by Tripathy *et al.* in 12%; Gangwal and Singh in 6%; Tresa Philomena 16.67% and K.P. Sharma in 14% of cases which subsided either on clearance of p.o.c. or by giving analgesics. Vomiting of mild degree has been reported by Shivamoorthy in 8%; Tripathy *et al.* in 5% and Gangwal 2% of cases. Pain requiring no treatment has been reported in 35% and 10% by Shivamoorthy and K.P. Sharma, respectively. no perforation of uterus by insertions of NTT has been reported.

PERIOD OF GESTATION FOR SAFE TERMINATION OF PREGNANCY

It is possible to terminate pregnancy of any length, with NTT but we advise that a doctor must observe strictly the norms laid down by the Medical Termination of Pregnancy Act, 1971 and Rules 1975 with regulations.

PRESENTATION

NTT is supplied in packets of 10 Tents each.



CERVIDIAL-T

LAMINARIA TYPE
HYGROSCOPIC TENT

INTRODUCTION

CERVIDIAL-T developed in R&D wing of Synthochem are not merely substitute of imported Laminaria Tents but better to some extent (please refer advantages).

MODE OF ACTION

CERVIDIAL-T contains highly hygroscopic husk of *P. Ovata* in its natural form which absorbs moisture from the mucous present in the cervical canal and gradually swells many times of its original size causing slow and painless cervical dilatation. The patient is not disturbed physically or psychologically. The complete dilatation is achieved with 6-12 hrs.

ADVANTAGES

As compared to laminaria tent CERVIDIAL-T is quicker in action, safer in use and easily available at reasonable cost. It is definitely superior to metallic/glass dilators as it does not cause any scratch or erosion to cervical tissues being inserted singularly and comparatively of thin size, does not require any anaesthesia, provides painless cervical dilatation without physical or psychological disturbance.

STERILISATION

For sterilisation of CERVIDIAL-T, it should be kept immersed in absolute alcohol for at least 12 hours prior to insertion.

POST-INSERTION PRECAUTIONS

As CERVIDIAL-T causes no scratches to cervical, tissues, extra precautions are not needed. But if they are used for M.T.P. or D&C operations, all the aseptic measures should be applied and treatment continued accordingly.

PRESENTATION : Single Sachet

COS COUGH SYRUP LOZENGES/DROPS

A drug of choice for the treatment of diseases of upper respiratory tract.



COMPOSITION

Syrup Each 15 ml contains extract of:

Cinnamomum iners (Tejpat)	2 gm	D. Alba (Dhustur)	200 mg
T. Belerica (Bahera)	2 gm	Solanum Jacquini (Kantkari)	1 gm
Taxus Baccata (Talishpatra)	0.5 gm	Menthol	q.s.
Alpinia Galanga (Kulanjan)	0.5 gm	Sugar base	q.s.
Khurasani Ajwayan	0.5 gm		

LOZENGES/DROPS

Each drop contains:

A. Catechu (Khadir Twak)	2 gm	H. Niger (Khurasani)	0.5 gm
C. Iners (Tejpat)	2 gm	G. Glabra (Madhuyeshthi)	1.5 gm
T. Belerica (Bahera)	2 gm	Eucalyptus oil	0.01 ml
A. Galanga (Kulanjan)	5 gm	Peppermint	0.01 ml
S. Xanthocarpum (Kantkari)	1 gm	Sugar	0.5 gm

PHARMACOLOGY

COS contains soothing and cough sedative ingredients which provide immediate relief. COS is a good decongestant which exerts predictable results.

INDICATIONS

Sore throat, laryngopharyngitis, cough, coryza, bronchitis, cough of pulmonary tuberculosis.

DOSAGE AND ADMINISTRATION

SYRUP-Best way of administration is to give 10-20 ml of COS in 40 ml boiling water and sipped hot like tea for three or four times a day.

LOZENGES OR DROPS-These are very tasteful minty drops for the purpose of chewing slowly to get immediate soothing effect for inflamed mucous membrane of the throat. Take as frequently as you require.

PRESENTATION

SYRUP-100 ml and 200 ml bottles

DROPS-Pouch of 18 drops and Jar of 100 drops

DIGEST

Natural Enzyme Syrup

DESCRIPTION

Digest is a very palatable digestant cum appetiser syrup containing lipolytic and proteolytic natural enzymes.

COMPOSITION

Each 10 ml contains:

Ext. Papita (raw papain)	250 mg	Sucrose	9 gm
Ext. Chitrak (P. Rosea)	500 mg	Sodium Benzoate	5 mg
Ext. Trikatu (Tri-Bitters)	500 mg	Amaranth colour	q.s.

PHARMACOLOGICAL ACTION

Chitrak and Tribitters are well known appetisers and digestants whereas aqua ptycotis is a good carminative and papain a reputable digestive enzyme. So, Digest not only digests food but also increases appetite simultaneously.

INDICATIONS

Loss of appetite, indigestion, flatulence dyspepsia, abdominal discomfort and allied disorders. Helps in metabolism after taking rich carbohydrate, protein or fat containing diet.

DOSAGE AND ADMINISTRATION

As digestant: 2 tea spoonful twice daily after meals

As appetiser: 2 tea spoonful twice daily before 1/2 hr of meals.

PRESENTATION

100 ml and 200 ml bottle

GYNEC-20 Gynaecological Tonic

DESCRIPTION

Palatable tonic for gynaecological disorders.

COMPOSITION

Each 5 ml contains:

Ext. Ashoka	20%	Ext. Accacia Catechu (Khadir)	10%
Ext. S. Racemosa (Lodhra)	10%	Ext. Areca Catechu (Supari)	10%
Ext. A. Racemosus (Shatabari)	12.5%	Ext. Velerian (Tagar)	25%
Ext. W. Somnifera (Ashwagandha)	12.5%	Palatable syrupy base	4.5 gm

PHARMACOLOGY

Extracts of Ashoka, Lodh and Velerian are uterine sedative which control hypermotility of the uterus. Ashwagandha, Shatabari are tonics and emanogauge and Supari with Khadir are powerful astringents which stop unwanted secretions from genital organs.

INDICATIONS

Polymenorrhoea, hypermenorrhoea, metropathia haemorrhagia, leucorrhoea, salpingo-oophoritis, cervicitis, infertility, ammenorrhoea, general rundown conditions, habitual abortion and sexual neurasthaenia.

DOSAGE AND ADMINISTRATION

Two tea spoonful twice daily.

PRESENTATION - 100 and 200 ml bottles.



LUCOSYNTH-O ORAL CAPSULE

DESCRIPTION

Oral capsule for the treatment of leucorrhoea and other gynaecological disorders.

COMPOSITION

Each capsule contains:

Acacia Catechu (Khadirsar)	10.5%	Pulv. S. Racemosa (Lodhra)	15%
Quercus Infectoria (Majuphal)	30%	Ferrous Bhasm (Loh)	5%
Alum purified	10%	Copper Bhasm	4%
Ext. Ashoka	15%	Ext. Velerian (Tagar)	10.5%

PHARMACOLOGY

LUCOSYNTH-O tones up genital system and releases its astringents through blood stream which provide selective action at the site of lesion.

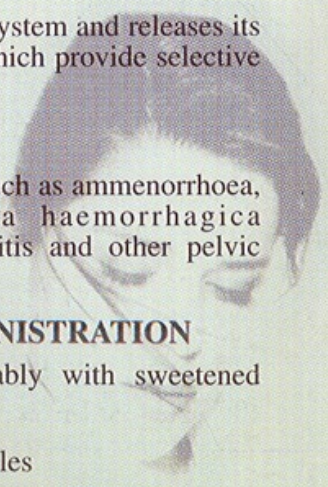
INDICATIONS

Leucorrhoea, menstrual disorders such as ammenorrhoea, polymenorrhoea, metropathia haemorrhagica hypermenorrhoea, cervicitis, vaginitis and other pelvic inflammations.

DOSAGE & MODE OF ADMINISTRATION

One capsule twice a day preferably with sweetened lukewarm milk.

PRESENTATION - Jar of 45 capsules



LUCOSYNTH-V VAGINAL OVULES

DESCRIPTION

The only first herbal vaginal ovules for the treatment of leucorrhoea.

COMPOSITION

Each ovule contains:

Areca Catechu	25.5%	Ext. Berberis Aristata	10%
Sareca Indica	30.0%	Starch	34.5%

PHARMACOLOGY

First two ingredients are powerful astringents which spontaneously dry up vaginal discharge and provide immediate symptomatic relief to regain faith of the patient. Ext. Berberis Aristata is a vaginal antiseptic which stops microbacterial growth responsible for leucorrhoea.

INDICATIONS

Cervicitis, vaginitis, leucorrhoea, narrows relax vagina due to multiple pregnancies, also be used during pregnancy.

MODE OF APPLICATION

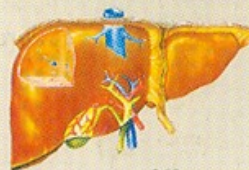
One ovule should be kept deep into the vagina every morning and bed time for 14 days to get permanent cure. Good results are obtained from the third day onwards.

PRESENTATION - Jar of 30 ovules.

LIVOSYN SYRUP

DESCRIPTION

Cures liver disorders in shorter period.



COMPOSITION

Each 5 ml contains:

P. Rosea (Chitrak)	30 mg	Papadakhar	260 mg
Sarjikakshar	30 mg	Terminalia Chebula (Haritaki)	25 mg
E. Officinalis (Amla)	25 mg	Ginger	30 mg
Gentian (Kalikutaki)	30 mg	Piper Nigrum (Marich)	30 mg
Lime	20 mg	Mandur Bhasm (Iron)	10 mg

PHARMACOLOGY

LIVOSYN detoxicates liver and regenerates damaged or dead cells. It has got gentle diuretic effect which is very important factor in the treatment of ascites, jaundice and general oedema due to malfunction of liver.

INDICATIONS

Jaundice, hepatomegaly, cirrhosis, ascites, habitual constipation, anaemia due to malfunction of the liver, retarded growth of the children. Livosyn is an excellent non-steroidal safe anabolic syrup for infants and children. Regular use of Livosyn increases appetite.

DOSAGE - Adults: 10 ml twice a day

Children: 1/2 to 1 tea spoonful twice a day.

PRESENTATION - 100 and 200 bottle

DENTOSOL MOUTH GUM THROAT PAIN

DESCRIPTION

A single effective paint intended for use in gum mouth and throat troubles.

COMPOSITION

Each 5 ml contains:

Camphor	30 mg
Mentha oil	0.1 ml
Thymol (Satajwain)	30 mg
Clove oil	0.15 ml
Kattha	50 mg
Syrup	4.57 ml
Amaranth red colour	q.s.

PHARMACOLOGY

DENTOSOL contains mild antiseptics and soothing ingredients which provide prompt relief in pains and helps to check infection of mouth.

INDICATIONS

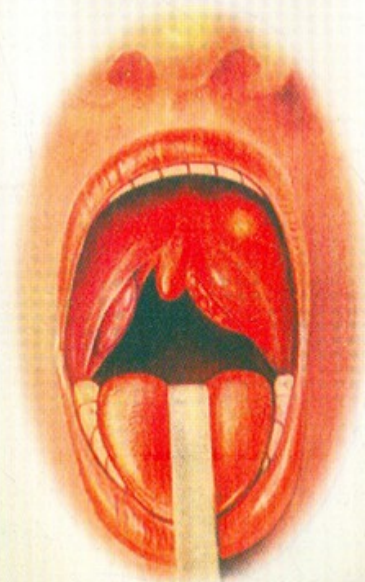
DENTOSOL is indicated in stomatitis, glossitis, gingivitis, laryngitis, pharyngitis and tonsillitis. Toothache is promptly relieved. In nutshell, this is a complete formula to maintain oral hygiene.

MODE OF APPLICATION

Apply gently over the lesion with cotton wool. If the lesion is extensive, use it as mouth wash or gargle by adding 60 drops of Dentosol in a cupful of water. This can be repeated as frequently as required.

PRESENTATION

5 ml vial.



VITRISAN *TONIC*

DESCRIPTION

Vitrisan is time tested herbal alkaliser providing predictable results wherever a good quality alkaliser is required.

COMPOSITION

Each 10 ml. contains :

Sodium Chloride (Samundri Lavan)	350 mg.	Sucrose (Sharkara)	2.50 gm.
Nimbukmliya Yavakshar (R.T.) (Pot. Citrate)	250 mg.	Orange Flavour	0.02 ml.
		Permitted Yellow Colour	q.s.

INDICATIONS

Vitrisan is indicated in hyperpyrexia, acidosis, dehydration due to diarrhoea, hemorrhage, burns, vomiting, diuresis of restricted fluid intake, retention of urine, crystalluria, uraemia, painful micturition

DOSAGE

10-20 ml. plain or diluted with 50 ml. water.
Vitrisan can also be taken as cold drink in summer.

PRESENTATION : 100 ml bottle



VEDNIL CAPSULE

DESCRIPTION

VEDNIL is non-corticosteroidal, non-salicylate anti-inflammatory safe analgesic.

COMPOSITION

Each capsule contains:

Nuxvomica detoxicated	10%	Plambago rosea (Chitrak)	10%
Guggul	75%	Zingiber officinale	5%

PHARMACOLOGY

VEDNIL contains detoxicated nuxvomica which is powerful analgesic and nervine tonic, guggul is acclaimed universally as dependable antirheumatic and analgesic. Chitrak restores resistance and shunthi (Zingiber officinale) is reputable carminative.

SPECIAL FEATURES

- * Effective where modern drugs fail
- * No gastric irritation and no weight gain
- * Roots out disease
- * Tones up nervous system
- * Broader range of coverage

INDICATIONS

Rheumatoid arthritis, rheumatism, gout, sciatica, chorea, cramps, tremors of legs and arms.

DOSAGE - One capsule daily.

PRESENTATION - 100 capsules jar.

LAXATE CAPSULE

DESCRIPTION

Laxate is laxative.

COMPOSITION

Each capsule contains Colocynth powder 500 mg

PHARMACOLOGY

The granular powder of colocynth fruits absorbs moisture from the intestinal gut and swells up. Intestinal movements squeeze out the contents of the swollen granules which becomes mucoid by which the lumen is lubricated resulting easy defaecation and soft stools.

INDICATIONS

This is a mild laxative given to weak patients.

DOSAGE

1-2 capsule at bed time with plain water.

PRESENTATION - 100 capsule per jar.

*Long
Tradition
of
Serving
Medical
Profession
Since 1968'*



 **Synthochem**

7-B, SHAHJAHANPUR ROAD, BAREILLY
PH.: (0581) 2528024, 2523827, Fax: 91-581-2571901
E-mail : synthochem@rediffmail.com