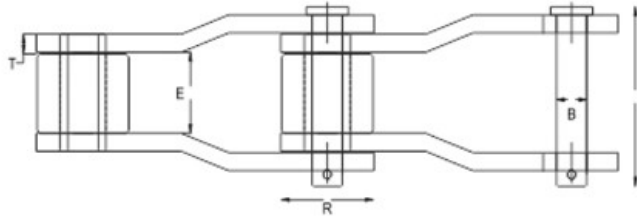


DRIVE CHAINS



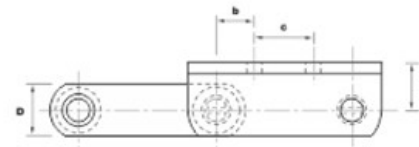
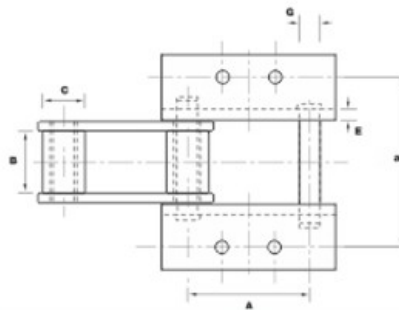
Technical Specifications

CHAIN NO.	PITCH P	BREAKING LOAD KGS	PIN		ROLLER		LINK	
			B	L APP.	R	E	W	T
TD-025	63.50	35000	19.75	75.0	39.68	38.10	60.0	8.00
TD-2609	66.26	13000	11.10	69.0	22.22	28.00	32.0	6.50
TD-1568	77.90	49000	19.00	98.0	41.25	40.00	50.0	10.00
TD-402	78.11	21000	15.85	88.0	31.75	38.10	40.0	8.00
TD-1037	78.11	35000	15.85	95.0	31.75	38.10	45.0	10.00
TD-3090	78.486	62000	22.20	115.0	44.45	38.10	60.0	12.70
TD-1245	102.45	77000	23.80	132.0	45.21	50.00	60.0	14.00
TD-635	114.30	94000	27.90	136.0	57.15	52.50	76.0	14.00

ELEVATOR CHAINS

ELEVATOR CHAINS

For Asphalt Industry



Technical Specifications

CHAIN NO.	PITCH A	BREAKING LOAD KG.	INSIDE WIDTH B	PIN DIA. G	ROLLER DIA. C	LINK		a1	C	d
						D	E			
TAE-102B	101.6	25000	56.36	15.8	25.4	40	10	120.65	44.45	25.4
TAE-3945	101.6	20000	50.8	15.8	31.75	40	8	120.65	44.45	34.93
TAE-3952	101.6	28000	50.8	19.05	36.52	45	10	120.65	44.45	41.28
TAE-3953	101.6	20000	38.1	15.8	34.93	40	8	120.65	63.50	34.93
TAE-4604	116.94	20000	50.8	15.8	34.93	40	8	120.65	44.45	34.93
TAE-3940	152.4	40000	50.8	19.05	41.3	60	10	120.65	58.74	50.8
TAE-2856	152.4	63000	76.2	25.4	69.85	65	12.7	120.65	63.50	47.63



An ISO 9001-2008 Certified Company

ALL DIMENSIONS ARE IN MM.