



SMARTBOX

(A Unit of Niko Portacabin System)

COMPANY PROFILE

COMPANY INFORMATION

- 1 GENERAL INTRODUCTION
- 2 DESIGNS AND SALES OFFICE
- 3 MANUFACTURING PLANT
- 4 ORGANIZATIONAL CHART

WHY MODULAR ?

WHY SMARTBOX ?

AIM & AMBITION

PRODUCTS AND SERVICES

- A. SMART MODULAR BUILDING SYSTEMS
- B. SMART PORTA CABINS / SITE OFFICES
- C. SMART LABOUR CAMPS & DWELLING UNITS
- D. SMART VILLAS & FARM HOUSES
- E. SMART SCHOOLS & ROOF TOP CLASSROOM
- F. SMART MEZZANINE FLOORS / DOUBLE STOREY
- G. SMART CONTAINERS
- H. SMART MOBILE TOILETS
- I. SMART SECURITY CABINS

CLIENTELE

1 GENERAL INTRODUCTION

NIKO PORTACABIN SYSTEMS was founded by Mr. Ramesh Verma in Year 1996.

Its first project was the Landmark project for the leela Group of Hotels in Delhi with new technology as Dry construction, pillar less & thermal insulation

& most important Time saving hassle free

& zero wastage product for Project site

office. The Modular System core was

introduced for the first time in India with

a major back through. To overcome the

time limit Pillar less light weight steel

panels were introduced produced for

changing the conventional concrete

building history. After that came many

successful projects were carried for

Client such as The Ministry of Defense,

Punj Lloyd, Aditya Birla Group, DLF, Adani

Group & Many more. In 2006,

NIKO PORTACABIN SYSTEMS expanded its

product range & Client list & expanded

throughout India to introduce new age

modular & prefab construction which can

be used as Commercial, Residential

Building. To make it even easier and more

accessible to company owners,

NIKO PORTACABIN SYSTEMS will deliver

WAREHOUSES, SITE OFFICES, SCHOOLS,

WEDDING HALLS, LABOUR CAMPS,

PREFAB VILLAS & FARM HOUSES,

MOBILE SECURITY CABINS, MOBILE TOILET

in a turnkey fashion, including all

architectural, structural and facility related

electrical and mechanical trades.

NIKO PORTACABIN SYSTEMS began

producing a modular housing system.

The fully finished factory produced panels

can be erected next to each other with

male female locking systems. to form

residential villas, offices, and much more.

Niko Portacabin Systems has over

42 employees which are dedicated in

adding value in the eyes of the customer.

Our innovative engineers strive to advance

our technology to bring the fastest and

the most economical systems for buildings.

We are committed to go the extra mile to

ensure that the project goals are attained.

2 DESIGN AND SALES OFFICE

Over 15 employees in our main office are dedicated to satisfying all of our customers' needs. We will quote your projects for free, help you choose the products that will fit you better, and guide you in all aspects of your structure. Drop by our office in for a presentation on our various products.

CONTACT INFORMATION

ADDRESS | Ahmedabad, Gujarat.

MAIL ID | smartbox.amd@gmail.com

PHONE NO. | 09974229999
07698981110

3 MANUFACTURING PLANT

our manufacturing plant operates using state-of-the-art technology, insuring the industry's highest is located in New Delhi & Gujarat 10 engineers, 12 technician & 20 workers produce all kind of Prefab panels. With direct access to the highway, we can deliver our products all over India and Particularly around western India at low transportation costs & timely delivery.

CONTACT INFORMATION

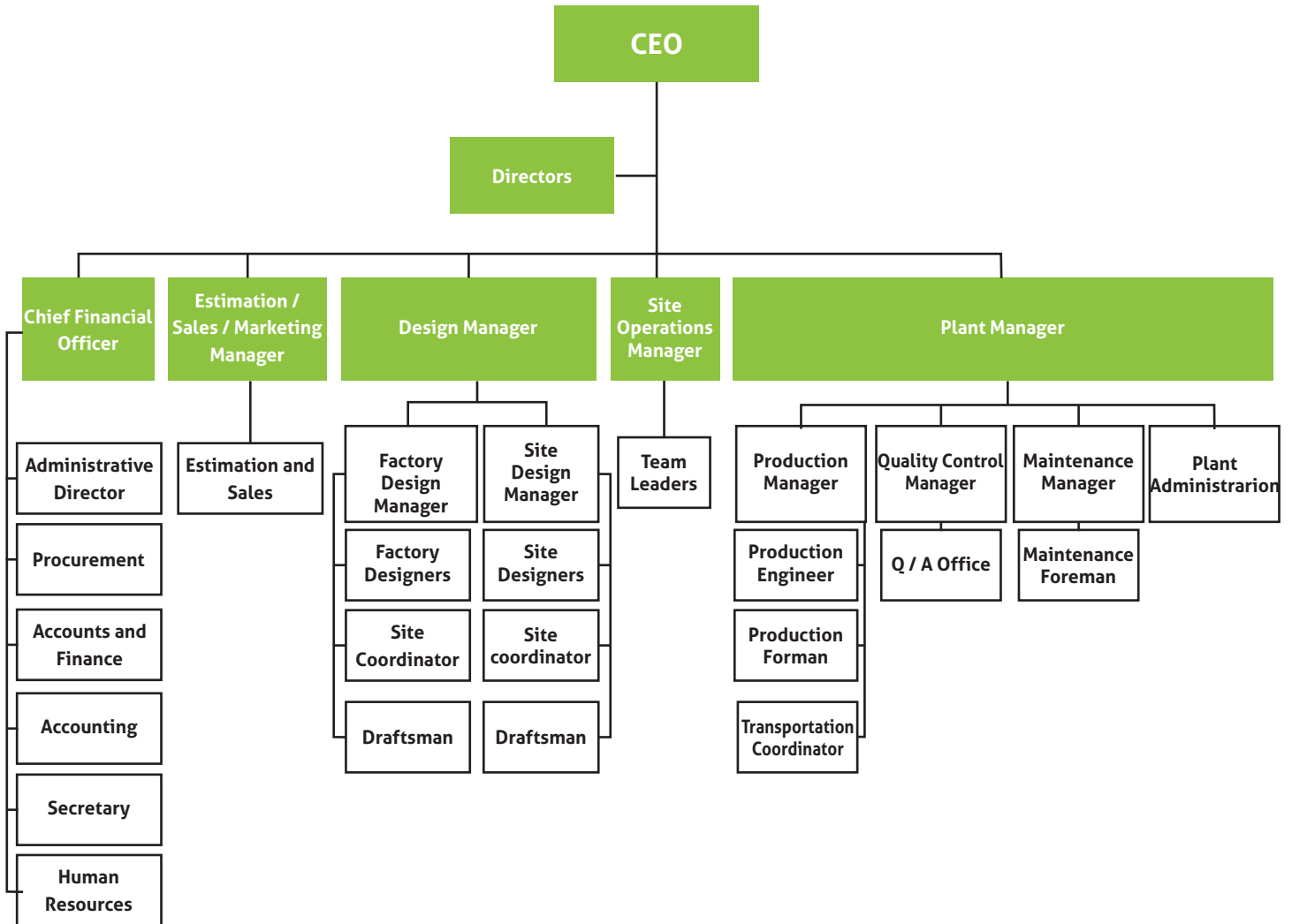
ADDRESS | New Delhi, India.

MAIL ID | smartboxcabin@gmail.com

PHONE NO. | 09899199966
09810634722



4 ORGANIZATIONAL CHART



WHY MODULAR?

TOP 10 Reasons to Choose Smartbox Modular Construction over Conventional Construction

Feature	Advantages	Benefits
1 Versatility	Modular components can be easily expanded, relocated or reused.	This flexibility allows them to adapt to future changes or expansion at your business.
2 Quick Installation	Modular components are pre-engineered so that they can be assembled quickly during installation.	A shorter install time results in a minimized effect on overall plant productivity.
3 Clean Installation	Prefabricated components require minimal on-site construction and fabrication, which reduces dust and other contaminants during installation.	This results in less disruption to your facility and minimizes an effect on your employee productivity.
4 Reduced Construction Labor Costs	Prefabricated components install quickly and easily.	A quick install results in a lower cost of labor when compared to conventional construction.
5 Ease of Coordination	Smartbox supplies single source installation through a factory-trained distributor network.	This provides end customers with a turnkey process that includes local support and assistance.
6 Reduced Design Time	Modular components are pre-engineered.	This significantly reduces the amount of engineering and architectural time required to design your building.
7 Consistent Quality & Appearance	Our attractive, integrated systems are manufactured to exact specifications.	Standardized modular components provide complete design consistency throughout any additions or expansions.
8 Low Maintenance	Our durable, prefabricated wall panels require little maintenance beyond occasional surface cleaning.	This eliminates the cost for repainting, surface repairs and other maintenance associated with conventional construction.
9 Tax Advantages	Depreciation for conventional construction is 31 1/2 years, while depreciation for modular construction is only 7 years.	This results in a quicker return on investment.
10 Environmentally Friendly	Less construction material is wasted when building with modular components.	Companies can earn LEED points to improve their Green Building Rating.

WHY SMARTBOX?

For more than 18 years, Smartbox has been the industry leader in designing and manufacturing inplant offices and industrial enclosures. Working with the widest range of interchangeable wall panels, stud options, and accessories gives us a distinct advantage over our competitors as we can design offices specific to your application while still achieving the economies of scale necessary to be cost effective. Essentially, our broad product line allows us to "value engineer" your project to reduce costs without sacrificing quality, functionality, or appearance.

More specifically, here are some factors to consider when selecting a modular building system:

Non-Progressive Construction

While many suppliers will claim to offer easy relocation of their systems, Smartbox is one of the only manufacturers to offer a truly non-progressive system. Two piece steel stud sections allow for easy relocation of individual wall panels without disturbing adjacent panels or ceiling tiles while a 3" tall vinyl base screws into the galvanized steel floor track for greater durability, more pleasing aesthetics, and easier installation.

Structural Integrity

The heart of any modular building is its framing system and Smartbox leads the industry. Its stud sections physically connect back-to-back providing the strongest load bearing system on the market. The unique double layer steel studs provide more strength at a lower cost than single layer studs and the rolled ends reduce tear risks during assembly.

Electrical Functionality

Smartbox system allows for wiring capabilities on both sides of the stud without affecting the structural integrity of the stud. Removable "snap-in" cover plates allow for easy inspection of raceways. Electrical or communication lines can be added at any time, during or after installation without purchasing additional stud components or cutting into them.

Appearance

Smartbox realizes that appearance is important. At Smartbox, we take the extra measures to ensure that our buildings not only function well, but also project a positive image to employees, customers, and other visitors.

Quality Components

We make sure that all of our components and accessories are designed for the rugged industrial environments in which they will operate.

WHY SMARTBOX?

Versatility

Smartbox can be accessorized to fit virtually every need. In addition to a wide variety of standard features, there are a number of special options available.

- Sound, thermal, and fire insulation
- Unique electrical and lighting specifications
- Special aesthetic requirements customized to fit your desired look
- Storage roofs
- Structural mezzanines

Service

Our quality commitment extends to our engineers, who must meet the highest quality industry standards of customer service, industry knowledge, and expert installation procedures.

All of our workers are trained on our entire product line so you can rely on them to handle all of your needs including delivery and installation. .

With our Programs, you also get speed. 60% of our orders are shipped within 10 days!

Support

With a staff of engineers outfitted with the latest CAD systems, we stand ready to provide quality engineered drawings, design assistance, and whatever else you need to make your project a success.

Benefits



SAFE



ENERGY EFFICIENT



ENVIRONMENTALLY FRIENDLY



FIRE RESISTANCE



TRANSPORTABLE



ADAPTABLE



DURABLE



FAST CONSTRUCTION & HIGH QUALITY



RECYCLED



COST EFFECTIVE



TERMITE RESISTANCE



STRENGTH

AIM & AMBITIONS

Our Aim

"We are committed to delivering quality modular construction, at all levels, to the lives of the communities we are privileged to impact. While remaining sensitive to rising cost and changing trends, Smartbox believes in the relentless pursuit of excellence. We achieve this through quality education, innovative technology and our promise to ensure a better tomorrow through eco-friendly solutions today."

Future Aspiration

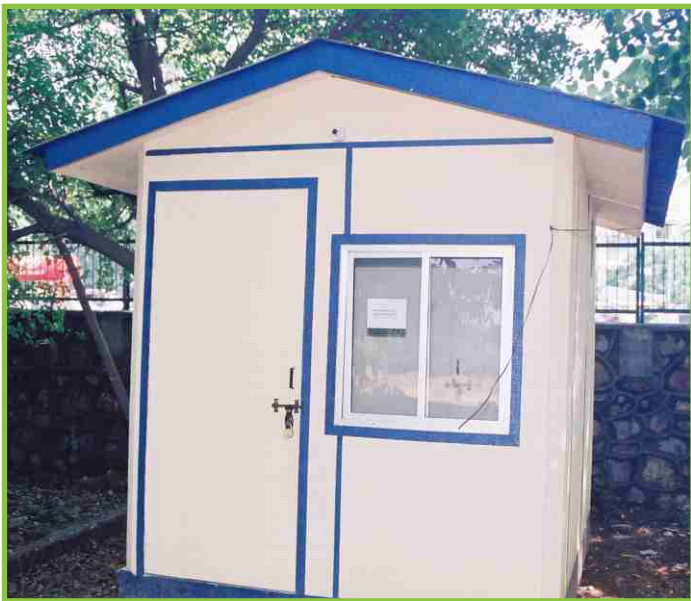
Though prefabricated structures have already made waves in the developed world the technology is still at a nascent stage in India. As urban areas invariably face space constraints, the prefab technology could certainly be a boon. The origin of prefab can be traced back to 1960s. However the real potential of this technology has been tapped only during the recent years. The companies that are offering prefab homes have little customization to offer. They offer houses of standard sizes, which generally come at a premium. India offers a huge market for affordable housing, which is highly correlated with the government programs for slum rehabilitation. This market has a good latent demand and offers a unique opportunity for prefab technology to reach masses. It is very clear therefore that large private sector developers who are eyeing this segment would resort to prefab technology, to ensure that there are faster returns on investment and that the project is completed within an economic cycle. It is believed by 2020 it would be possible to construct a house in just twenty days from groundbreaking to occupancy, thanks to the prefabricated engineering technology. Constructing most of the components in a factory rather than constructing them on site is the basic premise behind the technology.

AIM & AMBITIONS

This helps to expedite the construction time apart from standardizing the quality of the structure. Architects are incorporating modern designs into the prefabricated houses of today. Prefab housing should no longer be compared to a mobile home in terms of appearance, but to that of a complex modernist design. There has also been an increase in the use of "green" materials in the construction of these prefab houses.

Consumers can easily select between different environmentally friendly finishes and wall systems. Since these homes are built in parts, it is easy for a home owner to add additional rooms or even solar panels to the roofs. Many prefab houses can be customized to the client specific location and climate, making prefab homes much more flexible and modern than before. The use of prefabricated structures is on the rise which means more convenience to the consumers and good business for entrepreneurs. Building concrete structures is time-consuming, thanks to the number of steps involved right from sourcing the raw material to giving the finishing touches. This becomes a big problem especially if the requirement is immediate. However, since last four-five years, India has been introduced to a solution to this problem in the form of prefabricated structures, or prefab in short, more popularly known as porta cabin. Prefab structures (read Porta Cabins) are dwellings manufactured off-site in advance, usually in standard sections that can be easily shipped and assembled on site and are designed and built to be movable rather than permanently located.

PRODUCTS & SERVICES





SMART MODULAR BUILDING SYSTEMS

Product Description

The total modular building system is a structure designed and constructed entirely of prefabricated steel components including a combination of columns and beams, wall panels, sandwich panels, hollowcore slabs and stairs. In addition, Smartbox offers modular architectural panels in a wide range of finishes and colors that provide a truly unique structure. These components are suitable for a single or multi level building, up to 10 stories high. The building is designed to resist seismic forces. All elements are highly durable and suitable for heavy loads and unusual wear conditions. The quality of smooth formed finishes produced in a plant which saves money by allowing designers to expose the structure in a finished building.

Product use

Warehouses, light and heavy manufacturing units, offices, schools, multipurpose rooms, low cost residential, etc.

Advantages

- Less expensive than the traditional system. Our designs and components are efficient and always chosen by the means of value engineering
- Single Source Supply, Smartbox will design and build the entire structure, making it easy for company owners to construct their new factories and offices.
- Fast Building Envelope, Smartbox pre-engineered products are manufactured inside a controlled environment, allowing fabrication to begin even before permits and site/foundation work are complete.
- Smartbox pre-engineered components are rapidly erected to enclose the building, regardless of the weather.

Scope of work

Smartbox will supply the following as the concrete contractor:

- Design, value engineering and shop drawings of all structural elements.
- Manufacturing and transportation of the elements to construction site.
- Supervision and inspection of the installation.
- Schedule and planning reports continuously updated.



B SMART PORTA CABINS / SITE OFFICE

Product Description

The portacabin modules are pre-engineered units designed specifically to be cheap, fast and with acceptable quality requirement to fulfill a particular use. They are manufactured completely in our plant with integrated finishing and transported on site using trailers. Their light weight allows an easy relocation of the facility.

Product use

- Site Offices.
- Portacabins.

Advantages

- Pre-Engineered, no need for an engineer or architect, we have standard modules for all uses.
- No hidden costs, quotation includes all items needed and what's not included is mentioned.
- Ease of coordination, a single source supply is giving you a turnkey facility.
- Speed of installation, move in the same day.

Scope of work:

- Architectural, mechanical, electrical, structural drawings

- Manufacturing of the steel prefab modules

Specifications

- Walls: Portacabin overall height 14ft in single stories (+2ft to elevate the prefab above the ground level) Walls are made of Rigid polyurethane foam between 2 nos 0.5mm galvanized steel sheets ,color can be as desired by client. Frame color is will be same as per Panels .Silicone waterproofing for jointing.
- Floor: Made up of three components, first a steel structure primed and painted is installed, it is then covered by a galvanized trapeze steel sheet and finally water resistant Plywood covers the entire floor.
- Roof: Flat roof structure is made of primed and painted steel ribs. A 0.5mm trapeze galvanized steel sheets covers the top. A false ceiling made of painted gypsum board covers the inside of the room.
- Windows & Doors:- Can be of any desired material & dimensions are per requirement of clients.

All interior & exterior works including accessories can be as per desired by clients.





SMART LABOUR CAMPS & DWELLING UNITS

Product Description

Accommodating workers in good living conditions and offering them a comfortable home-like living environment is a main concern for companies that are operating in remote areas. Prefabricated modular worksite camp buildings require rapid manufacturing and installation to prevent interruption of the project. Furthermore construction site buildings should enjoy high level of security. Smartbox is manufacturing safe and quickly installed prefabricated construction site buildings by means of high technology. Smartbox modular site buildings facilitate construction projects with their ergonomic designs, practical and quick installation, efficiency and functionality. Smartbox has already executed many projects worldwide.

Product Use

Buildings, dining halls, mining camps, oil and gas companies worksite camps, labor accommodation, office buildings, administrative office buildings, remote camp facilities, military camp,

modular dormitories,
modular office buildings,
modular WC/shower buildings,
workers camps, emergency
residence modular units...etc

Advantages

Smart Labour camps worksite buildings can be produced as single-storey or two-storey or Multistorey. Smart Labour camps are highly insulated products that can be used comfortably in all weather conditions. Smart Labours camps are fully produced as disassembled then transported to requested location for assembly and are delivered to customers as ready to use with all parts included.

Specifications

- Wind force: 90 kg/m²
- Live load is 200 kg/ m² and dead load is 400 kg /m²
- Snow load (Max.): 80 kg/m²
- Labour Camps are earthquake resistance.



D SMART VILLAS & FARM HOUSE

Product Description

The SmartBox is a prefab modular construction, where the finishing is fully integrated. Each module can be made up to fulfil all client needs according to project requirement. The modules can be set up next to each others to create large open spaces, or can be stacked on top of each others to make up a duplex. Each module is an intricate piece of machinery, fully customizable to meet architectural requirements. Doors, windows, and provisions for electrical and mechanical can be cast into the outer walls. Internal finishing as paint, floor tiles, electrical and sanitary are done in at site. External finishing as stone cladding or roof tiles are installed on site.

Product use

Residential villas up to two floors, mountain loft, garage unit, retail stands, dorms, Farms houses & Weekend homes fully operation as civil concrete buildings..

Advantages

- Less expensive than traditional constructions
- Turnkey buildings
- Single source supply
- Faster construction then any traditional systems, erect Highly customizable

Scope of Work

- Architectural, mechanical, electrical, structural drawings
- Manufacturing of the prefab material
- Installation of the panels on site
- Remaining finishing on site
- Connection for the electrical and mechanical systems from the villa to public infrastructure.

Specifications

- Wind force: 90 kg/m²
- Live load is 200 kg/ m² and dead load is 400 kg /m²
- Snow load (Max.): 80 kg/m²
- Prefabricated house earthquake parameters.





SMART SCHOOLS & ROOF TOP CLASSROOM

Product Description

The portacabin modules are pre-engineered units designed specifically to be cheap, fast and with acceptable quality requirement to fulfill a particular use. They are manufactured completely in our plant with integrated finishing, and transported on site using trailers. Their light weight allows an easy relocation of the facility.

Product Use

- Single Storey Building
- Double Storey Building

Advantages

- Pre-Engineered, no need for an engineer or architect, we have standard modules for all uses.
- No hidden costs, quotation includes all items needed, and what's not included is mentioned
- Ease of coordination, a single source supply is giving you a turnkey facility.
- Speed of installation, move in the same day.

Scope of work:

- Architectural, mechanical, electrical, structural drawings

- Manufacturing of the steel prefab modules
- Optional transportation and installation of the prefab modules on site

Specifications

- Walls: Portacabin overall height 14ft in single stories (+2ft to elevate the prefab above the ground level) Walls are made of 75mm thick EPS panels with 2 nos 0.5mm steel sheets making them composite in nature, color can be as desired by client. Special chemicals & putty powder will be used for waterproofing.
- Sound Insulation: Thermacol for ceiling insulation is installed between the false ceiling and the steel panels .
- Roof: Walls are made of 75mm thick EPS panels with 2 nos 0.5mm steel sheets making them composite in nature, color can be as desired by client. Special chemicals & putty powder will be used for waterproofing. A false ceiling made of gypsum tiles 2ft by 2 ft with sound acoustic nature covers the inside of the room.
- Windows & Doors:- Can be of any desired material & detentions are per requirement of clients.





SMART MEZZANINE FLOOR / DOUBLE STOREY

Product Description

At Smartbox, we specialize in designing structural mezzanines to satisfy the specific requirements of wide variety of applications. We ask questions to understand the intended use of the mezzanine to ensure the final decision will satisfy your need for efficiency and safety under your planned working conditions. The design of a mezzanine is not as simple as specifying a size and load capacity. As the use varies, so must the structural design. Mezzanines used to support offices are designed with tighter lateral stability standards than those designed for general storage. Applications with high point loads require that special attention be paid to the ability of the deck to distribute these loads to the support members. In order to effectively service a broad range of applications with cost effective solutions, we offer different connection systems, many flooring options, and a number of accessories in addition to our lines of load-bearing modular wall systems that can also be used in designing mezzanines.

Product Use

Second storey offices, Observation decks, Storage decks, Work platform, multipurpose rooms, Watch towers, etc.

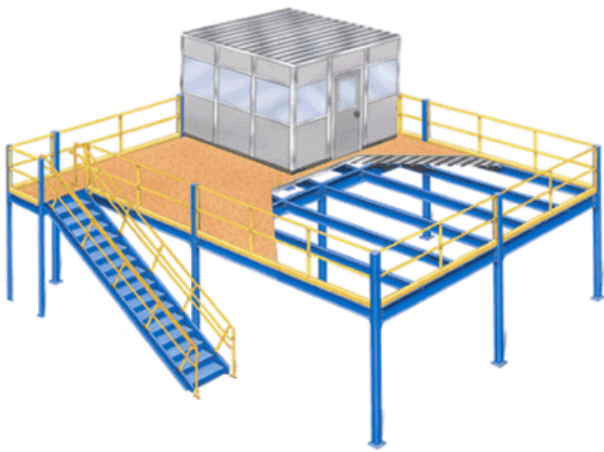
Advantages

- Fully demountable, so they can be relocated at a later date
- Avoids relocation costs by making use of available space
- Flexible design option, can be used for many purposes
- Excellent fire protection available
- Lightweight, economic steel structure
- Fast-track construction, with minimum disruption
- High quality, powder coated ancillaries in a wide choice of colours

Scope of work

Smartbox will supply the following as the concrete contractor:

- Design, value engineering and shop drawings of all structural elements.
- Manufacturing and transportation of the elements to construction site.
- Supervision and inspection of the installation.
- Schedule and planning reports continuously updated.





SMART CONTAINERS

Product Description

Smart container represents an excellent modular unit that has strong structure, high insulation and quick installation nature, which qualifies it as an ideal modular accommodation unit or even part of much larger structure. Smartbox offers modular containers that are being produced by means of modern manufacturing technology. Strict quality control system is being applied during all stages of production. Modular containers are produced based on different plans that suit different customers' needs such as one room, two rooms, with/without kitchen, with/without toilet and shower...etc. The container is produced as unassembled for the purpose of easy and low cost transportation. Upon reaching the final destination modular containers can be assembled in very short time by our experienced staff and delivered to customers for immediate usage.

Product use

Containers are being preferred for wide range of usages including: work site accommodation, emergency residence units, toilet and shower units, portable offices, mobile health centres, dormitories...etc.

Advantages

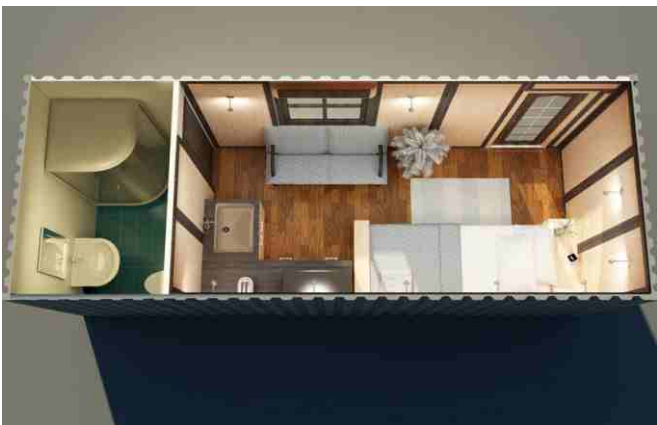
- Safety as they have strong earthquake resistant steel structures
- Pre-produced in factory-controlled environment according to international quality standards
- Flat pack structure that uses seamless threaded system
- Quick production and installation one site
- High insulation and can be used in different climate conditions
- Very cost effective solutions
- Light weight mobile solutions which make it easy to transport them to other locations

Specifications

Structural design calculations are performed by our engineers before the production of structural members in accordance with the space function, internal & external effects and national & international design standards.

Below are the main design parameters we use for containers:

- BOTTOM FRAME (CHASSIS)
- TOP FRAME (CHASSIS)
- CORNER BEAMS
- FOUNDATION DESIGN
- THERMAL DESIGN
- ELECTRICAL DESIGN
- PLUMBING DESIGN
- DOORS
- WINDOWS
- PACKAGING





SMART MOBILE TOILETS

Product Description

Portable toilets, often referred to as Porta Loos are simple portable enclosures containing a EWC which are typically used as a temporary option.

Portable toilets are large enough for a single occupant, Some include both a seated toilet and a urinal.

Most include lockable doors, ventilation near the top, and a vent pipe for the holding tank.

Another common pairing are portable toilets on trailers known commonly as a "toilet trailer". These restrooms are ideal for situations where the workers (users) are very mobile.

'Luxury' portable toilets also exist.

They are typically mounted on large "office-like" trailers or made from converted shipping containers.

They contain every amenity that a public bathroom would have such as running water, flushing toilet, stalls, urinals, mirrors, lighting, and even air conditioning and hot water in some cases. However, these luxuries come at a price as these trailers typically cost multiple times more than a typical portable toilet to buy or rent. They are commonly found at weddings, high end events/charities, and movie shoots.

Product Use

Outdoor work sites, construction sites, farms, camp sites, Events, Refinery, Highways, Rural & Urban Areas.

Advantages

Though more expensive than a standard permanent outdoor latrine, portable toilets have several significant benefits mostly related to their portability; as they are self-contained, they can be placed almost anywhere. A single portable toilet can be hauled in the back of a pick-up truck. An average portable toilet is able to hold enough sewage for 10 people during the course of a 40-hour work week before the hold reaches unsanitary conditions.

Scope of work:

- Design & Manufacture as per client requirement
- Transport & Install at site as per site conditions.
- Plumbing, Tiling & internally complete with accessories to provided ready to use.

Specifications

- Fixed type
- Toilets on I Beams
- Toilets on Wheels
- Chemical Toilet
- Trailer toilet
- Van Toilet
- Luxury Toilet



SMART SECURITY CABINS

Product Description

Innovative designs are presented by Smartbox for security cabins and guard houses. Our products enjoy many advantages such as strong panels, smooth and glossy surface, odor-free painting system, light weight, and competitive prices. Our cabins come as ready to use with all parts included and chosen from top brands. Smartbox pay special attention to the ergonomic usage of the cabin and guarantees the highest possible visibility to the security guard inside the cabin. Security booths can come in different dimensions.

Smartbox security booths and guard houses can be used as construction site security booth, social facility security booth, sport club and stadium security booth, airport and highway checkpoints security booth, coast guard booth, police security booth, security booth for gardens and parks, fairs security booth, and many other areas.

Modular cabins are becoming popular solutions across all life sectors thanks to their quick production and installation, aesthetic designs, portability and above all competitive prices.

Product Use

SmartBox Security cabins and kiosks are aesthetic products that can be comfortably used in Airports, ATM'S, Coast guard, Department of defense, Disaster relief agencies, Guard stations, Government agencies, Hospitals, Kiosks, In-plant offices, Observation posts, Watch Tower, Tickets selling kiosk, Fast food kiosk, Café kiosk, Security booth, Parks and recreation, Port authorities, Valet parking booth, etc.

Advantages

Their quick production and installation, aesthetic designs, portability and above all competitive prices.

Scope of work

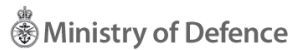
- Design & Manufacture as per client requirement
- Transport & Install at site as per site conditions.

Specification

- Fixed type
- Mobile Cabin on I Beams
- Mobile Cabin on Wheels
- Customized Units



CLIENTELE



All the logos are used for representational purpose only and remain the property of respective organizations.

SMARTBOX

(A Unit of Niko Portacabin System)

HEAD OFFICE :
PLOT NO.160 SURYA KUNJ,
NAJAFGARH, NEW DELHI.
+91 9899199966

REGIONAL OFFICE :
33/L, DHANLAXMI COMPLEX,
JIVRAJPARK, AHMEDABAD.
+91 9974229999

www.smartboxcabin.net
smartboxcabin@gmail.com