

Welcome to



Business Segments

Precision Plastic Injection Moulding



High Precision CNC -Machining



Introduction

From a modest beginning in 2006, Sheffield Technoplast has now grown into a fully integrated global manufacturer of precision plastic and metal components.

Promoters are experienced technocrats in the field of Plastics Injection Molding and Precision Machining, having large industrial experience of over 25 years. Top management is driving the team with the vision of being recognized as top global manufacturer and best in class solution provider.



Introduction

Our biggest asset is our people who drive the organization with a proactive, can-do approach and “getting the job done right the first time” is a priority.

Strong skills in Product & Process design, Tooling Management and Manufacturing makes the team unbeatable in competitive world.

The team is supported by state of the art machines with ability to produce consistent products.



Introduction

Corporate goal

To provide end-to-end plastics and machining solutions incorporating principles of:

- Product and Process Design
- Mold and Tooling Design
- Optimum Material Selection
- Optimum Machine Selection
- Manufacturing
- Addressing implied needs
- Global Thinking



Integrated Management System

Sheffield has implemented

Integrated Management System.

Both the divisions are certified to:

- ISO 9001 : 2015
 - ISO 14001 : 2015
 - ISO 45001 : 2018

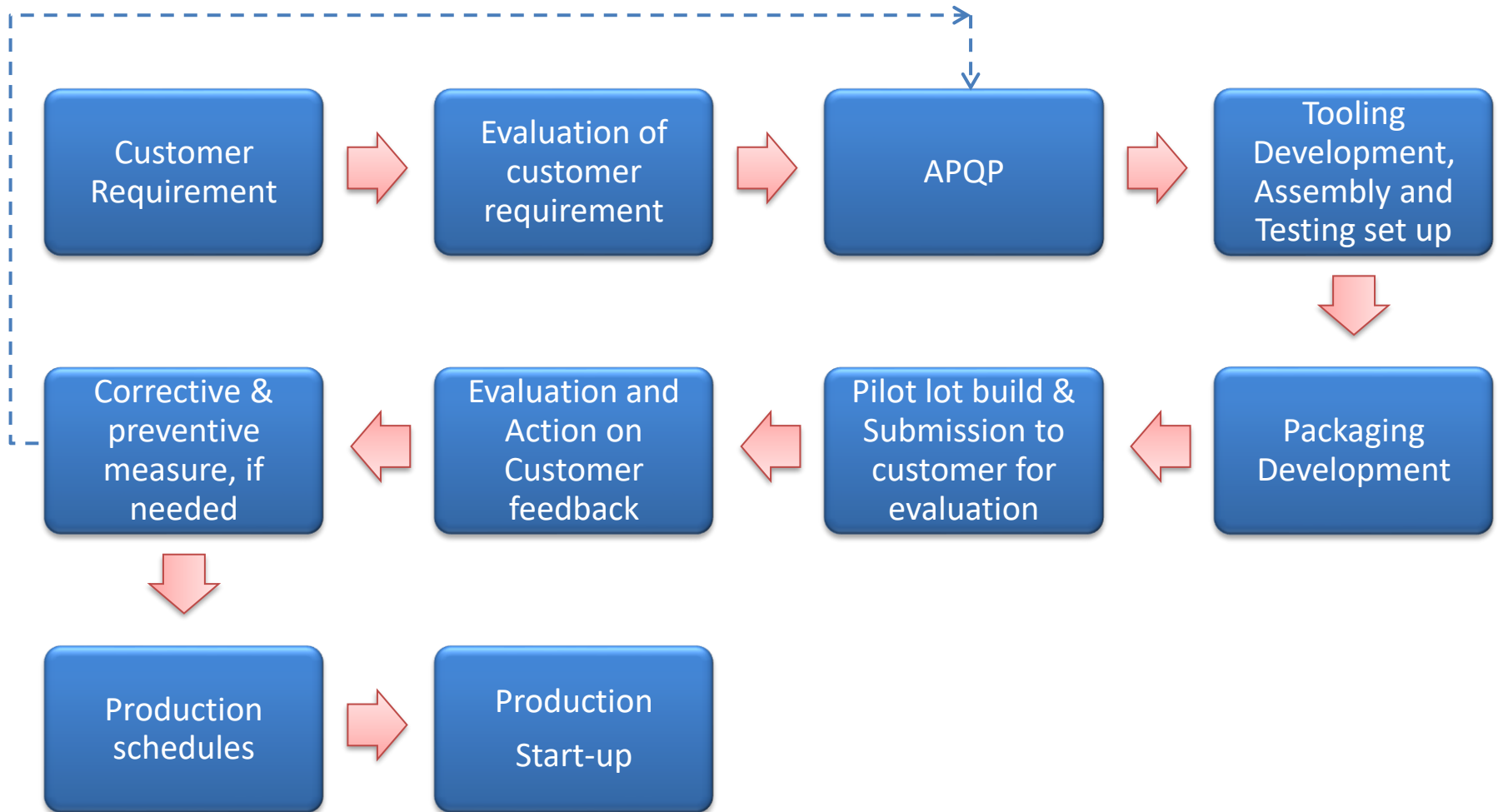


Integrated Management System Policy

We are committed to:

- Achieve customer satisfaction through production process compliance and technical support.
- Be a learning organisation and seek continual improvement to achieve global quality, environment, health and safety performance.
- Emphasis on personal commitment by active involvement of employee through competence and communication.
- Comply with the applicable legal and other regulations.
- Protect environment and promote Health and safety culture in our operation, by avoiding unsafe conditions.
- Identify and control hazards and environmental aspects.
- Monitor and control losses including waste, chemicals and materials.
- Optimize usage of natural resources like paper and energy.
- Educate employees and business associates on EHS to prevent or reduce ill health, injury and pollution.

Project Management



Product & Process Design

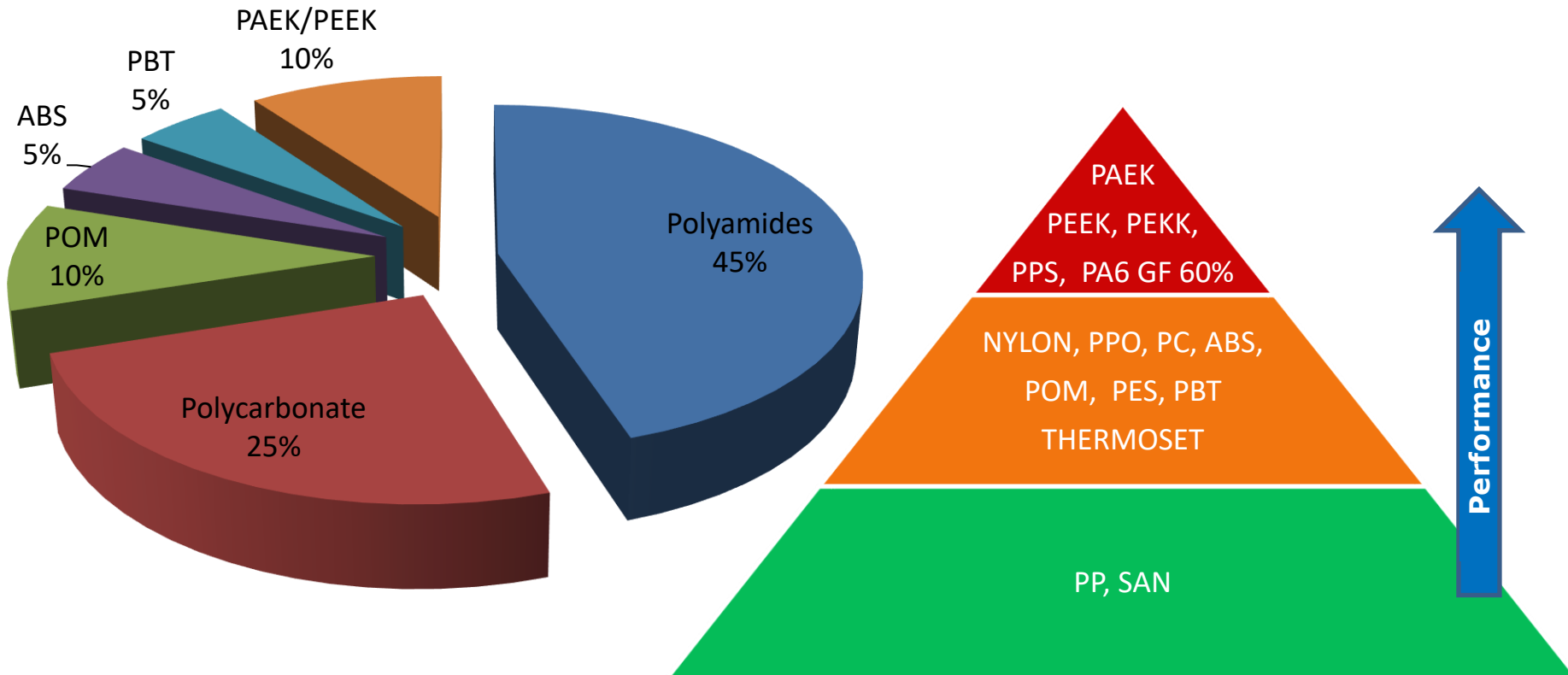
Sheffield Technoplast is the company which can take an idea through concept to engineering drawing, prototype, testing, tool design and manufacturing to final components and assemblies. This is done through various steps like,

- Preparing Design Brief
- Finalizing Concept from Multiple Concept Created
- Raw-material Selection and BOM
- 3D Modeling, Design Verification
- Design Failure Mode and Effect Analysis, Risk Analysis
- Proto Part building and testing, Detailed engineering drawings
- Proto Tool building, Product Validation
- Transfer learning to 3D models and Engineering drawings
- Process Failure Mode and Effect Analysis, APQP
- Production Tooling, Assembly and Testing set up
- Packaging Development
- Pilot lot build
- Evaluation and Action on Customer feedback

Injection Molding Specialty



Specialize in processing diverse and difficult polymers like



Many of these are Glass filled, Glass bead, Mineral filled, Carbon Fiber filled, Teflon filled, Graphite filled, up to 60%.

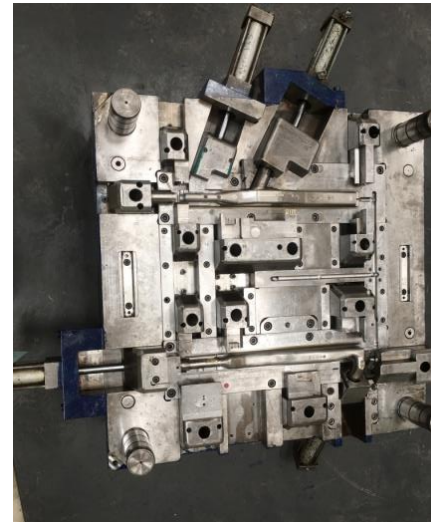
Core of success - Tooling



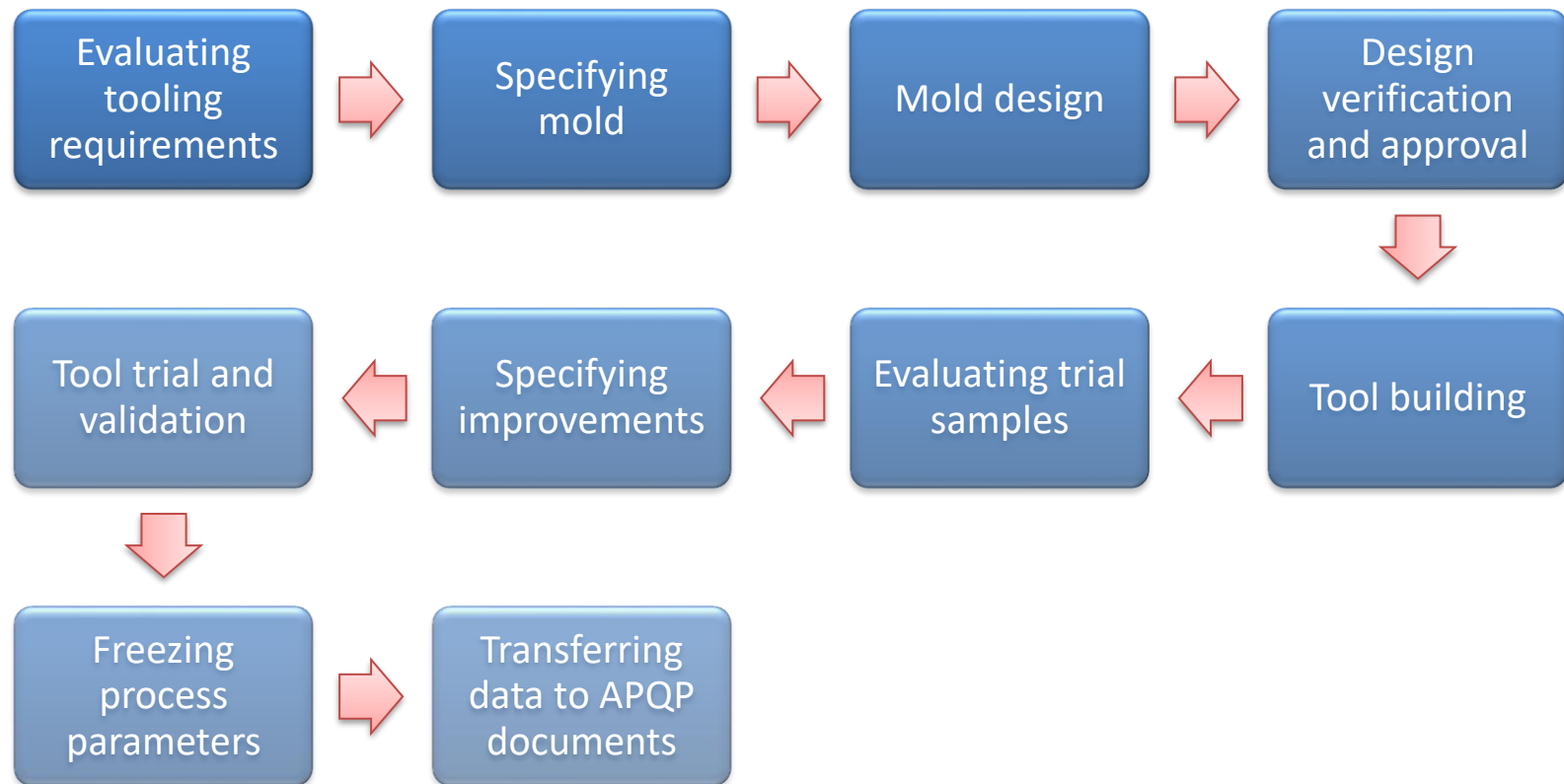
“Core of success lies at Sheffield’s Tooling Program”

At the heart of Sheffield Technoplast's success is its understanding of complex moulds with multi cavity hot runners, split molds, with hydraulic/ pneumatic/ mechanical core pulls, insulated runner moulds, stack mould, etc..

Team at Sheffield has hands on experience to handle complex moulds made all over world from Taiwan, China, India and other countries.



Core of success - Tooling

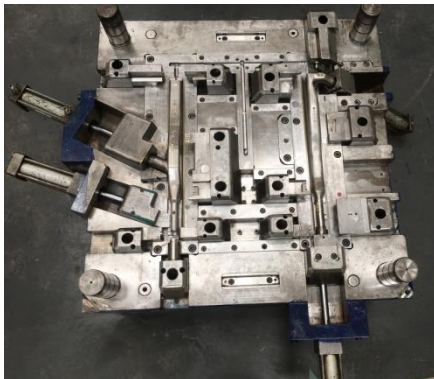


Core of success - Tooling



The range of tooling we offer includes,

- Proto Molds
- Single and Multi cavity production Molds
- Expandable and Interchangeable Molds
- Stripper and Floating Cavity Plate Molds
- Hot Runner System Molds
- Conventional and Insulated Runner Molds
- Shuttle and Insert Molds
- Unscrewing Molds
- Mechanical and Hydraulic Core pull Molds
- Over molding Molds



An intensive, "fail - safe" maintenance program leads to a greatly enhanced tool life, sometimes up to 2 times the guaranteed tool life.

Manufacturing Facility

- State of the art Injection molding machine:



- L&T-DEMAG 60 Ton(1), 85 Ton(4) and 100 Ton (1) machines.



- Ferromatik Milacron 110 Ton (2) machines.



- L&T-DEMAG 125 Ton (2) and 180 Ton (1) machines



- Toshiba 200 Tons (1) machine.



- L&T-DEMAG 275 Ton (1) machine.



- HAITIAN – 1080 Ton (1) machine.



- HAITIAN – 300 Ton (1) machine
- Dedicated contract molding facility upto 850 Ton

Value Addition



Adding Value is our strength

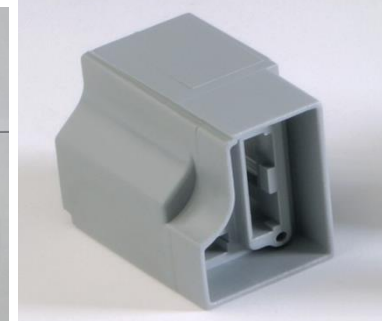
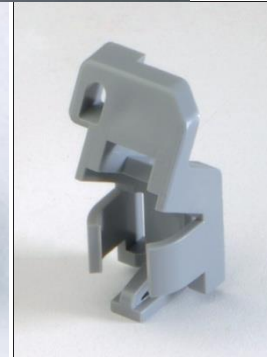
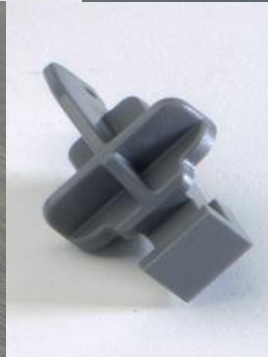
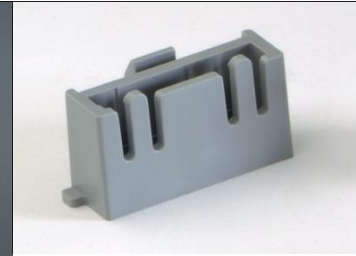
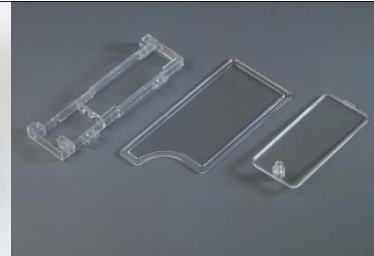
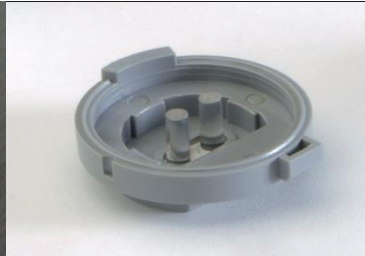
Sheffield offers a complete line of secondary and contract manufacturing capabilities. From simple assembly of mating components to complete turnkey assembly project of high precision complicated assemblies.

Sheffield also offers a wide variety of value added services that can save you time and money. Our manufacturing and contract capabilities include:

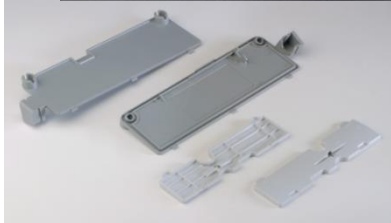
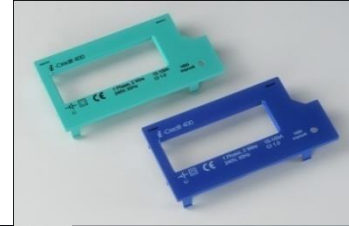
- Ultrasonic Welding
- Pad Printing
- Rubber Moulding
- Laser Etching
- Hot Stamping
- Screen Printing
- Gamma Sterilization
- Product Testing



Product Showcase



Product Showcase



Product Showcase



Product Showcase



Machining Specialty



Our engineering capabilities can cater to demanding technical specifications and requirements for different types of industries. We have been machining components for challenging industries in terms of their technical requirements.

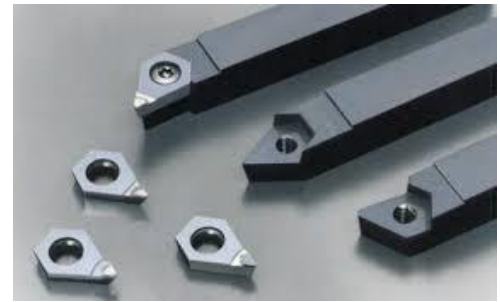
We are able to produce precision components of consistent quality for tolerances of

- $\pm 10 \mu\text{m}$ for CNC turning process
- $\pm 10 \mu\text{m}$ for CNC milling process

Our systematic approach coupled with our strict adherence to the highest work ethics is the driving force behind our remarkable growth, over a relatively short span of time.

These strength had gifted us the presence in diverse field of applications.

Tooling Selection



“Success lies at our significant understanding of Tooling”

The selection of the right metal cutting tool is critical for achieving maximum productivity during machining.

Our engineers are experienced in tool selection to achieve quality components at optimum cost and time.

We also have extensive experience of machining with many metals which require precision CNC equipment and in-depth understanding of the material characteristics .

Below are to name a few:

- Aluminium
- Stainless Steel
- Tool Steel
- Copper
- Brass
- Alloys
- Bronze
- Plastics



Manufacturing Facility

❑ State of the art CNC Turning Centre



- Haas SL-20 : Max. Turning Diameter $\varnothing 10.3"$ x 20" L (262 x 508 mm) and an 8.3"(210 mm) chuck, has a bar capacity of up to 2.0" (51 mm).



- Haas ST-10 : Max. Turning Diameter $\varnothing 6"$ x 14" L (150 x 356 mm) and a 6"(150 mm) chuck, has a bar capacity of up to 1.70" (43 mm) , **2 M/cs**



- Feeler FTC-20L : Max. Turning Diameter $\varnothing 12"$ x 25" L (300 x 650mm) and an 8.3"(210 mm) chuck, has a bar capacity of up to 2.0" (51 mm).



- Micromatic LT 2 LM 500 Plus: Max. Turning Diameter $\varnothing 20"$ x 20" L (500x 500 mm) and an 8.3"(210 mm) chuck, has a bar capacity of up to 2.0" (51 mm).

Manufacturing Facility

❑ State of the art CNC Vertical Machining Centre



- Haas VF-3 : 40" x 20" x 25" (1016 x 508 x 635 mm) travel.



- Haas VF-2 : 30" x 16" x 20" (762 x 406 x 508 mm) travel.



- Feeler VMP-30A : 30" x 16.5" x 20" (760 x 420 x 510) travel.



- Cosmos VMC CVM 850: 33.5" x 20" x 20" (850 x 510 x 510) travel.



- Cosmos VMC CVM 640: 25.5" x 18" x 20" (650 x 450 x 510) travel. **7M/cs**

Manufacturing Facility

Surface Grinding Machine, with NC control

X-Y Travel - 700 X 400mm,



EDM With NC control

X-Y-Z Travel 400 X 300 X 200mm

Work piece capacity 900 Kgs



Conventional Lathes and Vertical Milling Machines

Value Addition



Adding Value is our strength

Sheffield offers a complete line of secondary and contract manufacturing capabilities. From simple assembly of mating components to complete turnkey assembly project of high precision complicated assemblies.

Sheffield also offers a wide variety of value added services that can save you time and money. Our manufacturing and contract capabilities include:

- Grinding
- Wire Cut
- Heat Treatment
- Decrotizing
- Nitriding
- Argon Welding
- Silver Plating
- Plating
- Honing
- Black Oxidizing
- Anodizing

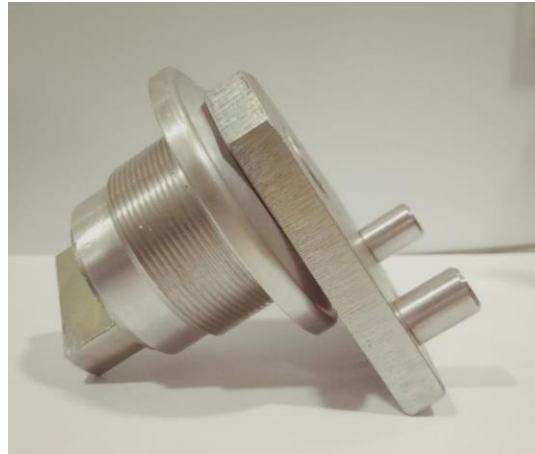
Product Showcase



Product Showcase



Product Showcase



Quality Assurance

Supplier Quality Management

- Supplier Evaluation
- Gap Analysis & CAPA
- Supplier Training
- Incoming Inspection
- NC Management



Internal Quality Management

- Inspection and Testing
- NC Control
- Failure Analysis
- Corrective Actions



Customer Quality Management

- Complain Management
- Failure Analysis & CAPA
- Change Control
- Document Control



Quality

Inspection Facility

Precision digital measuring instruments

- Profile Projector
 - Height Master
 - Surface Roughness Tester
 - Air Gauge
 - Digital Caliper : 200 to 1000 mm
 - Digital Micrometer : 25 to 150 mm
 - Bore gauge : 6 to 150 mm
 - Slip Gauge
 - Thread Gauges
 - Radius Gauges
 - Filler Gauges
 - Dial Indicator Gauges
 - Combination Set
 - Depth Gauge
 - Surface Comparator
- and all other related auxiliaries



House Keeping

A total commitment at all levels enables Sheffield to make blemish-free parts for demanding customers of medical devices and electronic components.

Sheffield holds plan to be one of the very few Companies having Clean Room Injection Molding and Assembly facility to cater Pharmaceutical industries.



Spirit of Partnership

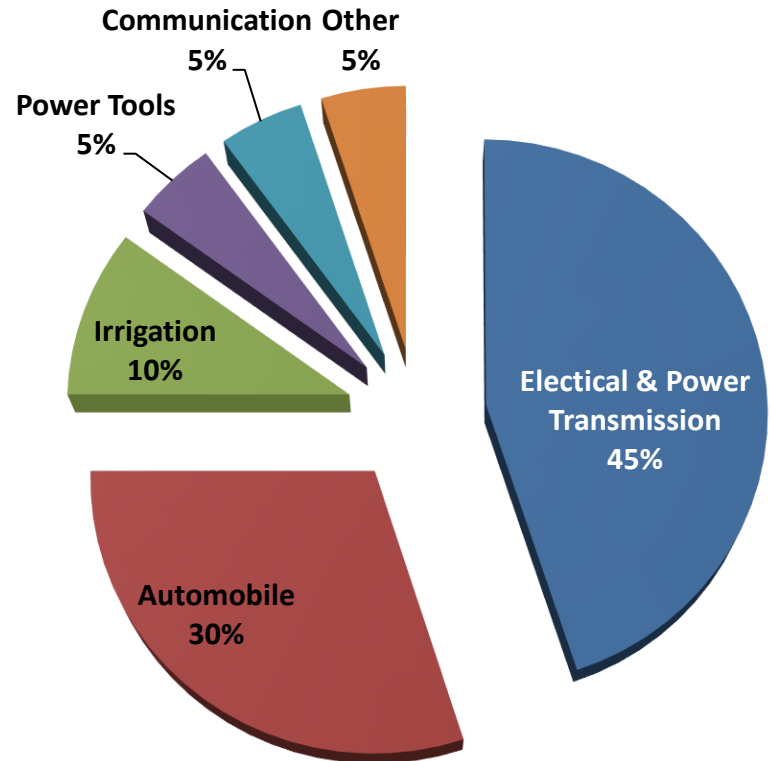


Sheffield believes in customer partnerships through quality of supplies, integrity of action , transparency of transaction and mutual growth through constant innovation and productivity improvement.

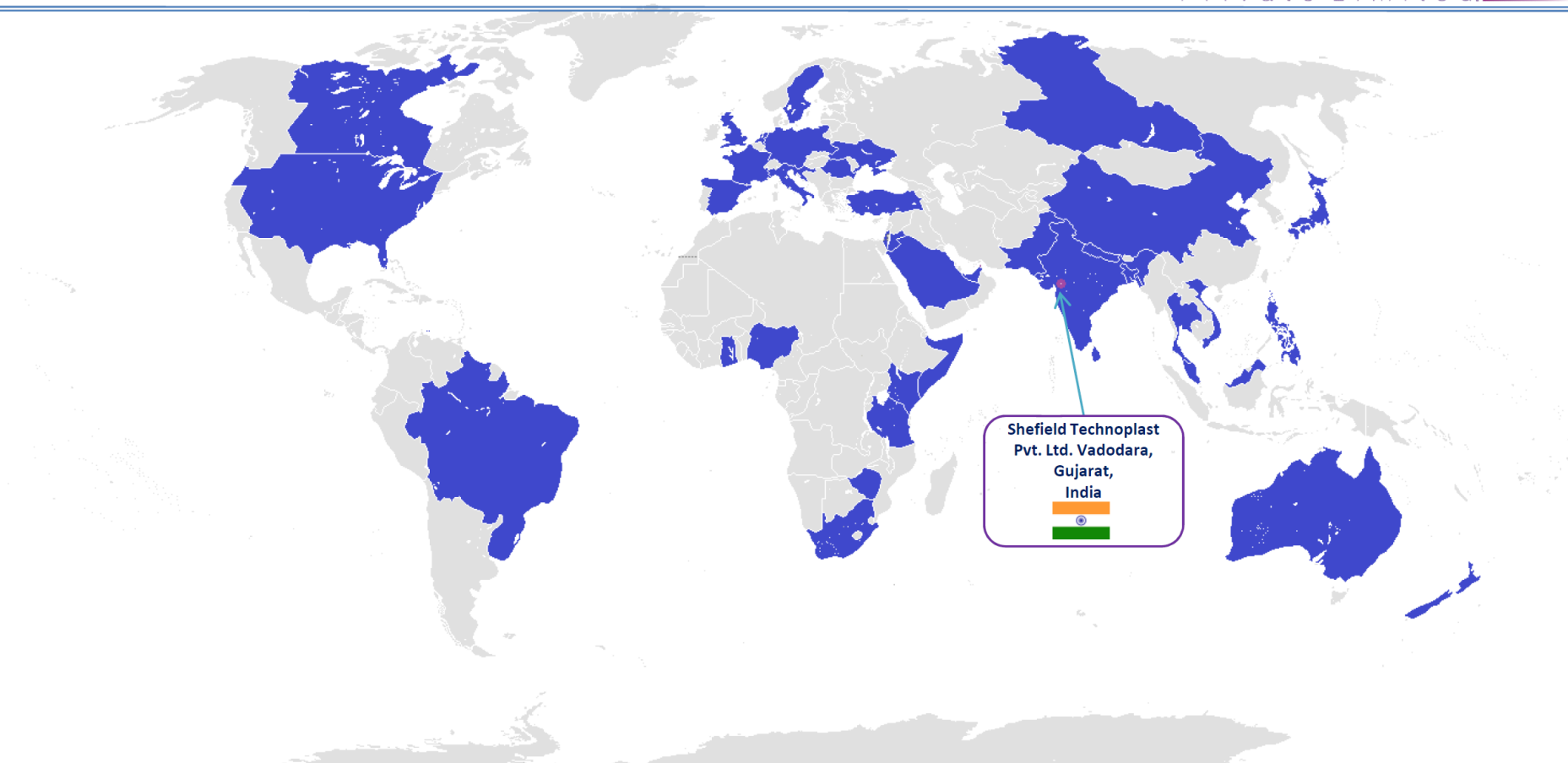
Sheffield has gone ahead and initiated productivity improvements at customers assembly line through innovation and in-depth understanding of the customers. A true example of going one step further in customer satisfaction.

Business Associates

- Electrical Industry
- Electronics Industry
- Tele-communication Industry
- Automobile Industry
- Irrigation Industry
- Textile Industry
- Power Tool Industry
- Automation industry
- Pharmaceutical Industry
- Refinery Industry
- Power Transmission Industry
- Machine Building Industry
- Aerospace Industry
- Bearing



Product Destinations



COUNTRY	COUNTRY	COUNTRY	COUNTRY	COUNTRY
AUSTRALIA	HUNGARY	NEPAL	SAUDI AREBIA	TURKEY
BANGLADESH	INDIA	NETHERLANDS	SOMALIA	TRINADAD AND TOBAGO
BRAZIL	ISRAEL	NEW ZEALAND	SOUTH AFRICA	U. K.
CANADA	ITALY	NIGERIA	SPAIN	U. S. A.
CHINA	JAPAN	PAKISTAN	SRI LANKA	UKRAINE
FRANCE	JORDAN	PHILIPPINES	SWEDEN	U.A.E.
GERMANY	KENIA	ROMANIA	TANZINIA	VIETNAM
GHANA	MALAYSIA	RUSSIA	THAILAND	ZIMBABWE

Note: Map is not as per scale

Future

What future holds



- Additional Moulding Machines in existing facility
- Specialised Raw Material Testing Lab
- Certification to IATF 16949

How to reach

Office and Plant :

114, GIDC Manjusar, Ta: Savli, Dist: Vadodara
Gujarat, India – 391775.

Phone : +91-2667-264514

Web : www.shefieldtechnoplast.com

E-mail : sales.p@shefieldtechnoplast.com
sales.m@shefieldtechnoplast.com



Location on Google Map:

<https://goo.gl/maps/NJvxrCL79x9sVDA7A>

