

DELTA SOLAR HEATER

Mfg: OM ENERGY EQUIPMENT, RAJKOT

Click to edit Mas



12/8/14

COMPANY INTRODUCTION



- OM ENERGY EQUIPMENT, RAJKOT
- MANUFACTURING SOLAR WATER HEATER
- STARTED IN 2001.
- MNRE APPROVED.
- ISO 9001 2008 AND ISO 14001 CERTIFIED.
- OWNED AND MANAGED BY A YOUNG TEAM.

PRODUCTS



- **SOLAR WATER HEATER.**
 - ETC AND FPC TYPE.
 - PRESSURISED AND NON PRESSURISED SYSTEMS.
 - DOMESTIC AND INDUSTRIAL SYSTEMS.
- **APPLICATIONS:**
 - HOME, HOTEL, HOSPITAL, HOSTEL.
 - INDUSTRIAL WATER HEATING.

HOME



12/8/14

INDUSTRIAL



APARTMENT



C D Reality Builder-Vyara



HOTEL



Hotel Khirasara Palace- RAJKOT.



12/8/14

HOSPITAL

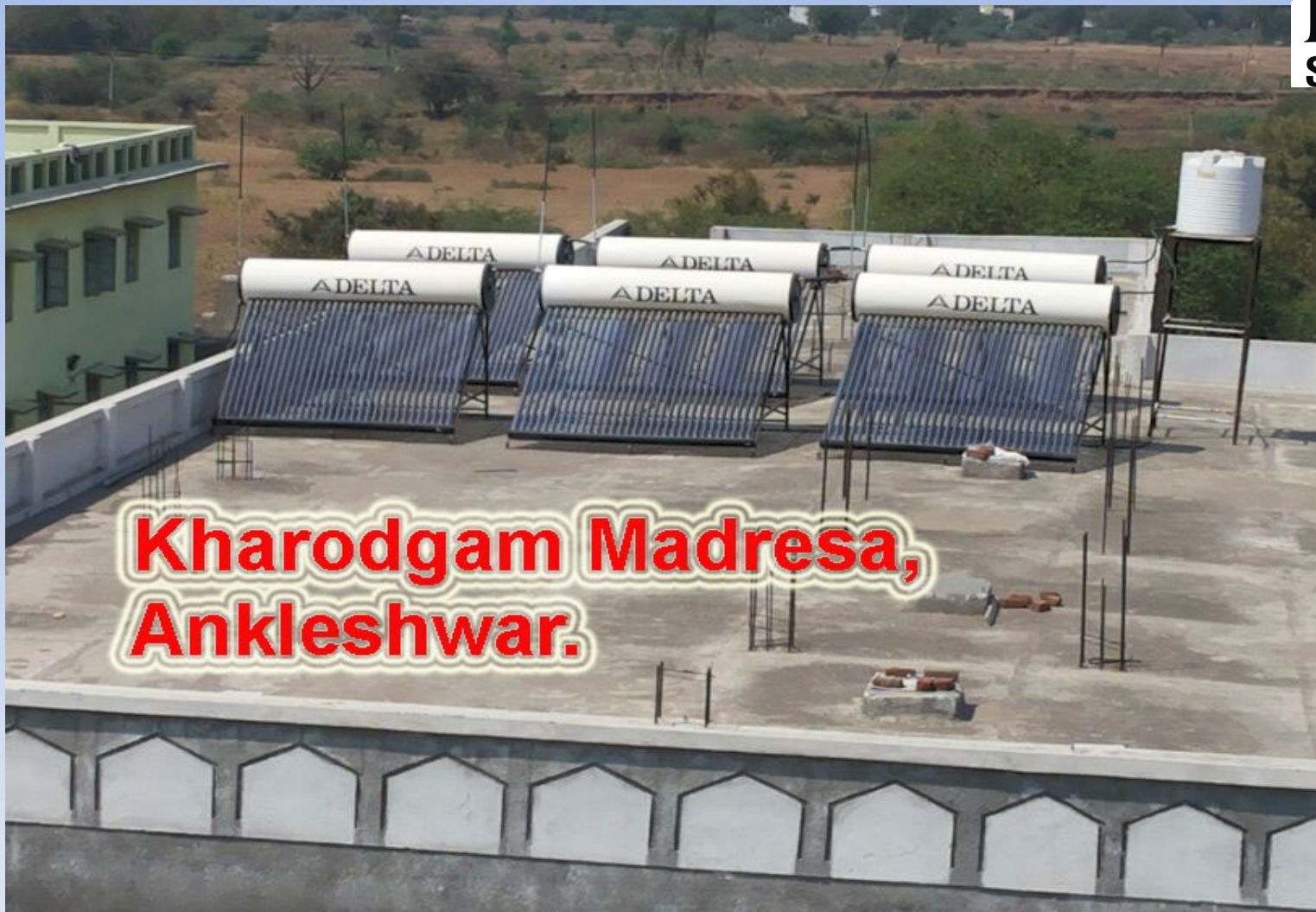


Welcare Hospital, Kharod-Panoli



12/0/14

HOSTEL_MADRESSA



**Kharodgam Madresa,
Ankleshwar.**

PRODUCT SELECTION



- NON PRESSURISED SYSTEMS:
- PER PERSON 35 TO 40 Liters.

MEMBERS IN FAMILY (NOS)	SYSTEM CAPACITY REQUIRED	NUMBER OF BATHROOMS
3 TO 4	150 LPD	2 TO 4
4 TO 5	200 LPD	2 TO 4
5 TO 6	250 LPD	2 TO 4
6 TO 7	300 LPD	2 TO 4
8 TO 10	500 LPD	2 TO 4

PRESSURISED SYSTEM



- 70 TO 80 LITERS PER PERSON IF USING PRESSURISED SHOWER BATH.

NUMBER OF PERSON	SYSTEM CAPACITY REQUIRED	BATHROOMS CONNECTED
3 TO 4 PERSONS	300 LPD	2 TO 4 BATHROOMS
4 TO 5 PERSONS	500 LPD	2 TO 4 BATHROOMS

SITE SURVEY



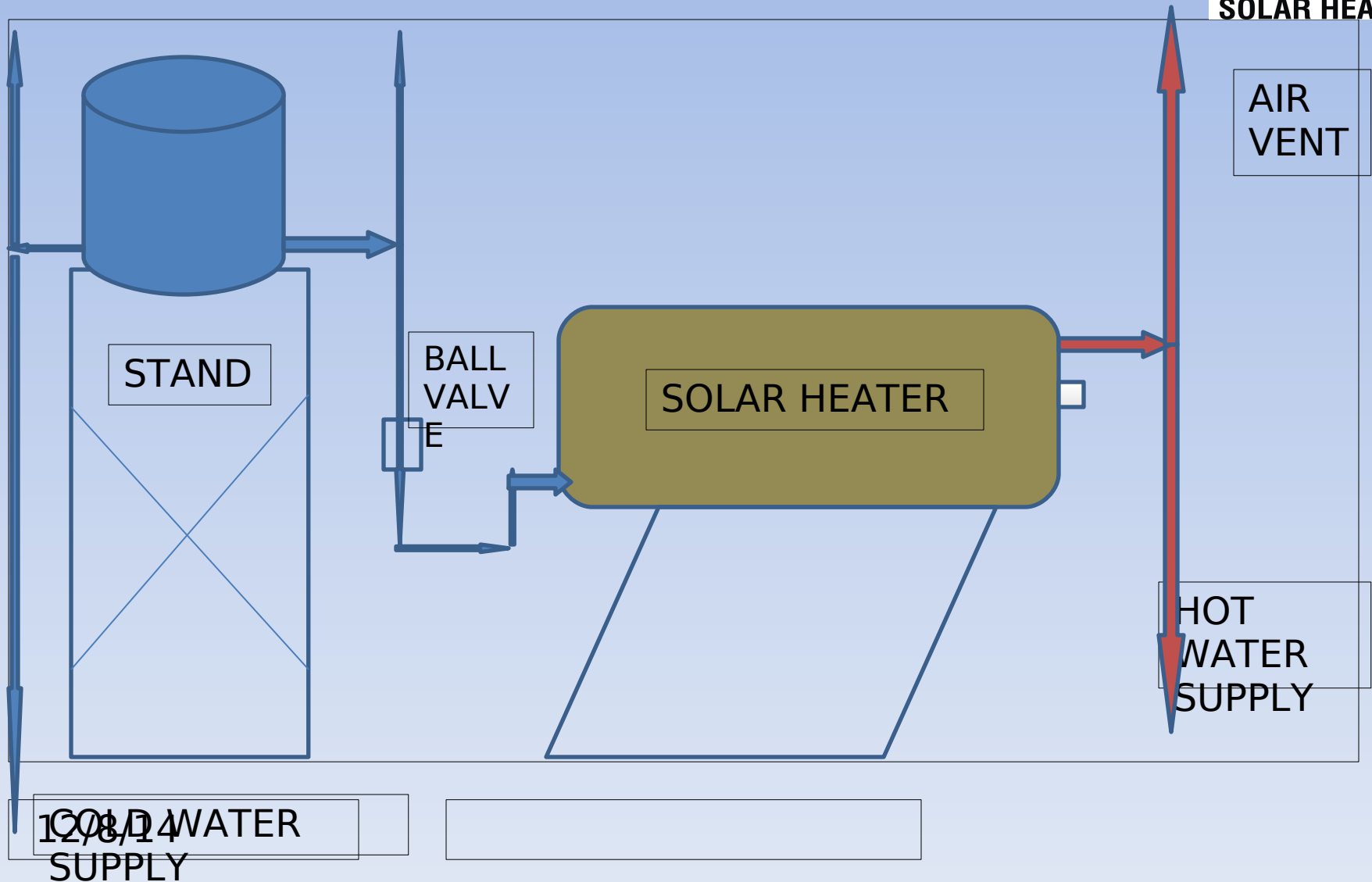
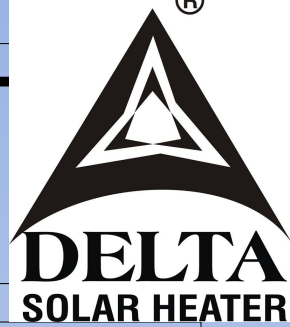
- SPACE AVAILABLE ON TERRACE
- COMMON HOT WATER PIPE POINT ON TERRACE ?
- NO SHADDOW OF NEARBY BUILDING OR TREES.
 - SPECIALLIY FROM SOUTH AND WEST DIRECTION.
- SUNLIGHT EXPECTED FROM 10 AM TO 4 PM.

INSTALLATION

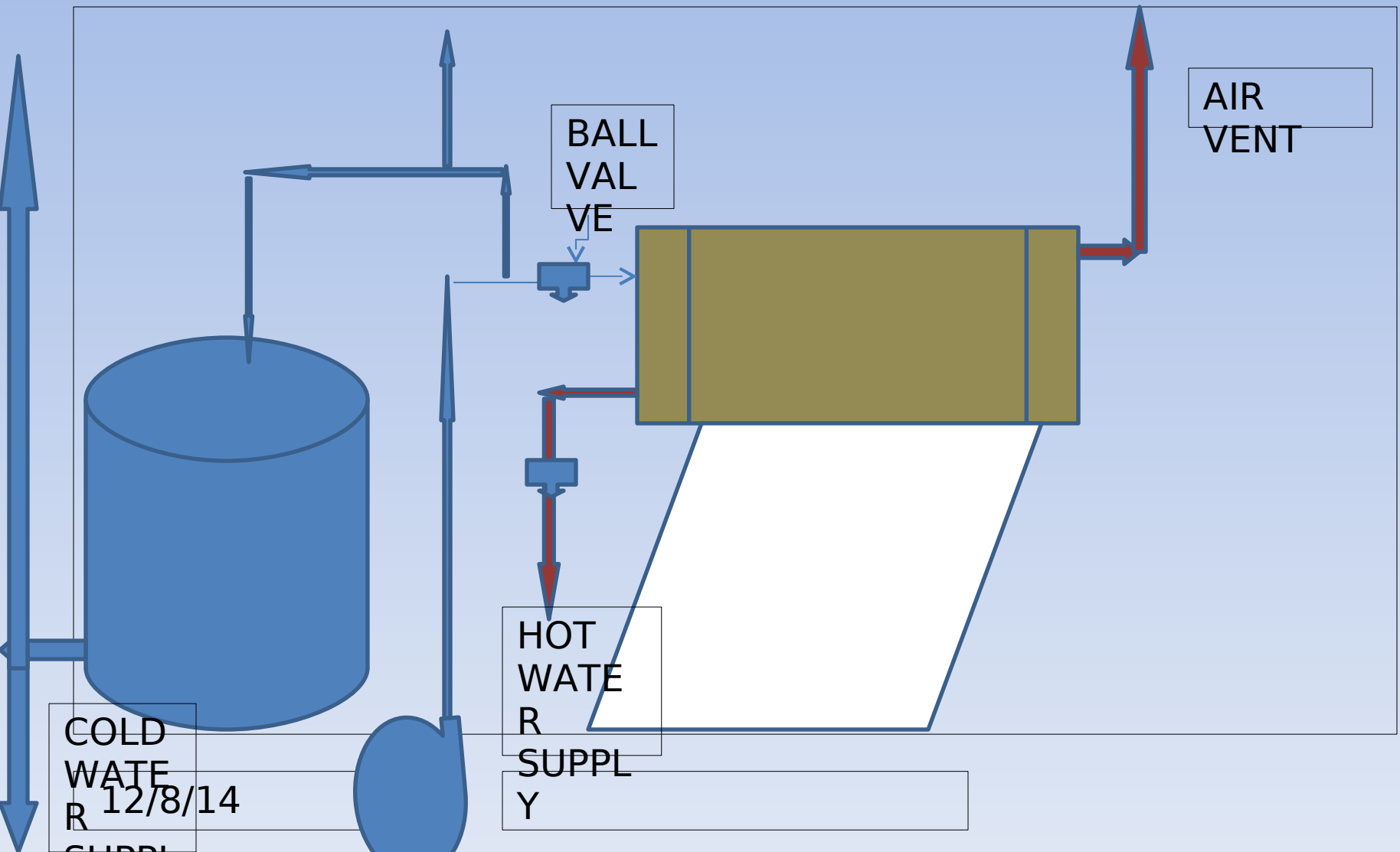


- ALWAYS IN SOUTH FACING DIRECTION.
- NEARER TO THE BATHROOMS IF POSSIBLE.
 - TO REDUCE PIPELINE HEAT LOSS.

AUTO WATER FILLING WITH OVERHEAD TANK



MANUAL WATER FILLING WITHOUT OVERHEAD TANK



INSTALLATION



- INLET AND OUTLET ALL HOT WATER PIPE.
- AIR VENT IS MUST IN NON PRESSURIZE SYSTEM.
- NON RETURN IS REQUIRED ONLY IF;
 - COLD WATER TANK IS ON HEIGHT THAN SOLAR FEED TANK.

INSTALLATION



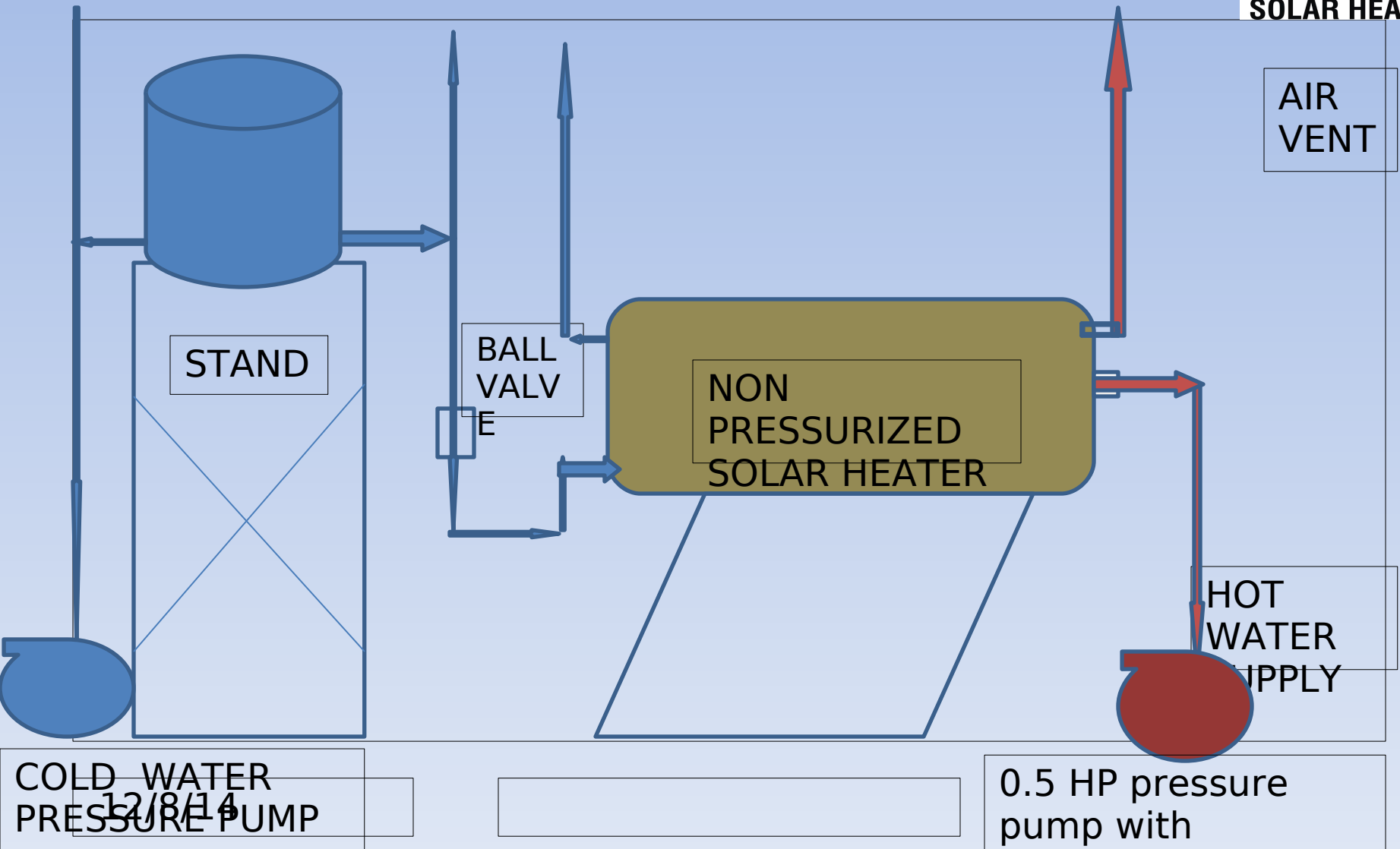
- Never apply pressure pump in a pressurized system inlet.
- Never block the air vent.
- Always support the air vent properly.
- NRVs may cut the pressure.

PRESSURISED SYSTEM



- Pressurized system is required to operate pressure jet shower panel only.
- Else avoid the pressurized system.
- Pressurized system has lesser life expected and lower performance.

HOT WATER PRESSURE PUMP IN SYSTEM NOT IT



FPC PRESSURISED



ETC PRESSURISED



RAJKOT DISTRICT BANK



RDC BANK



12/8/14

TEMPLE



Swaminarayan Gurukul - BOTAD



Piraman Madresa - Ankleshwar.



12/6/14

Ghaludi Swaminarayan Temple SURAT



12/8/14

HOTEL

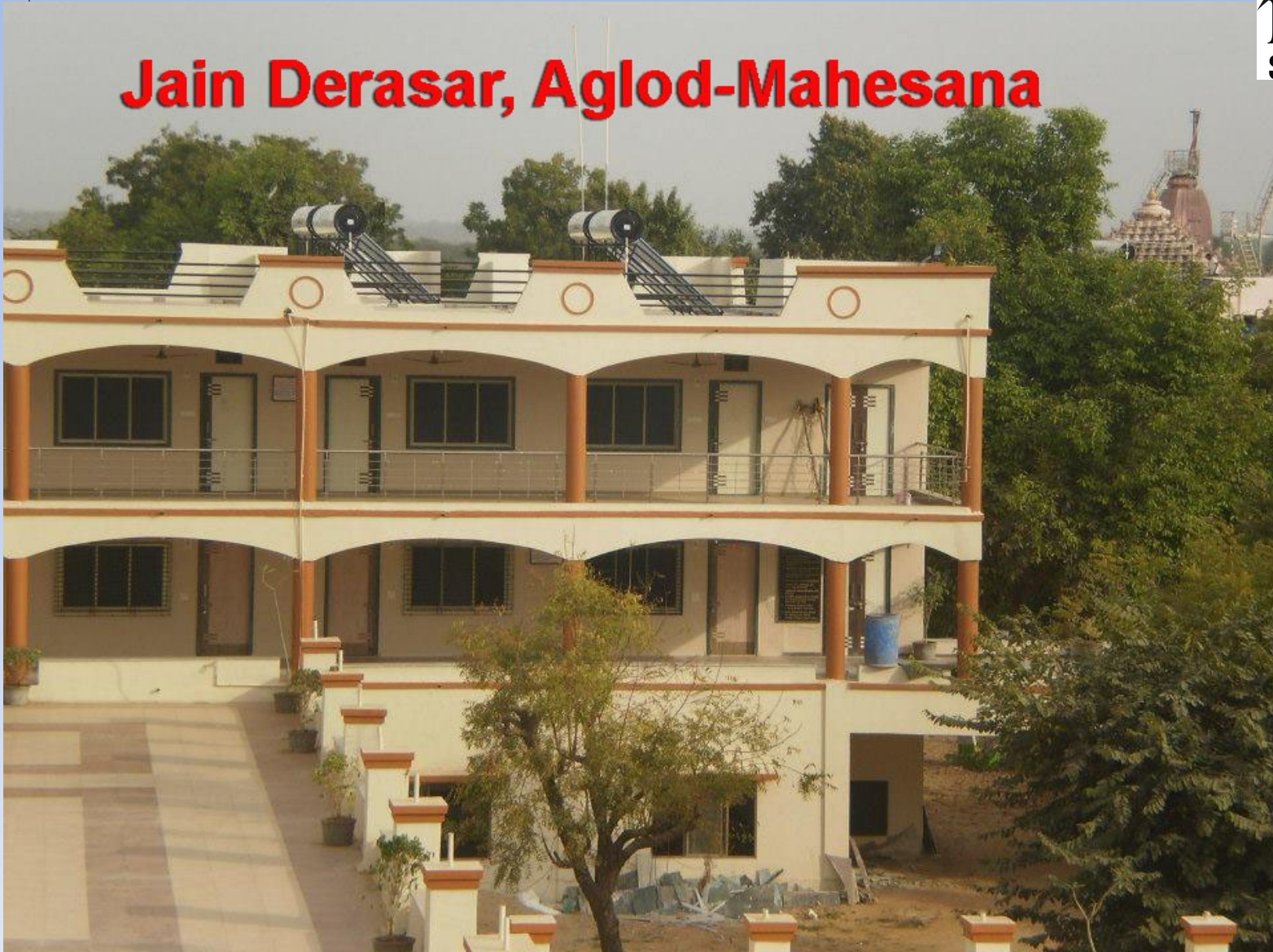


Airport Hotel - Jaipur

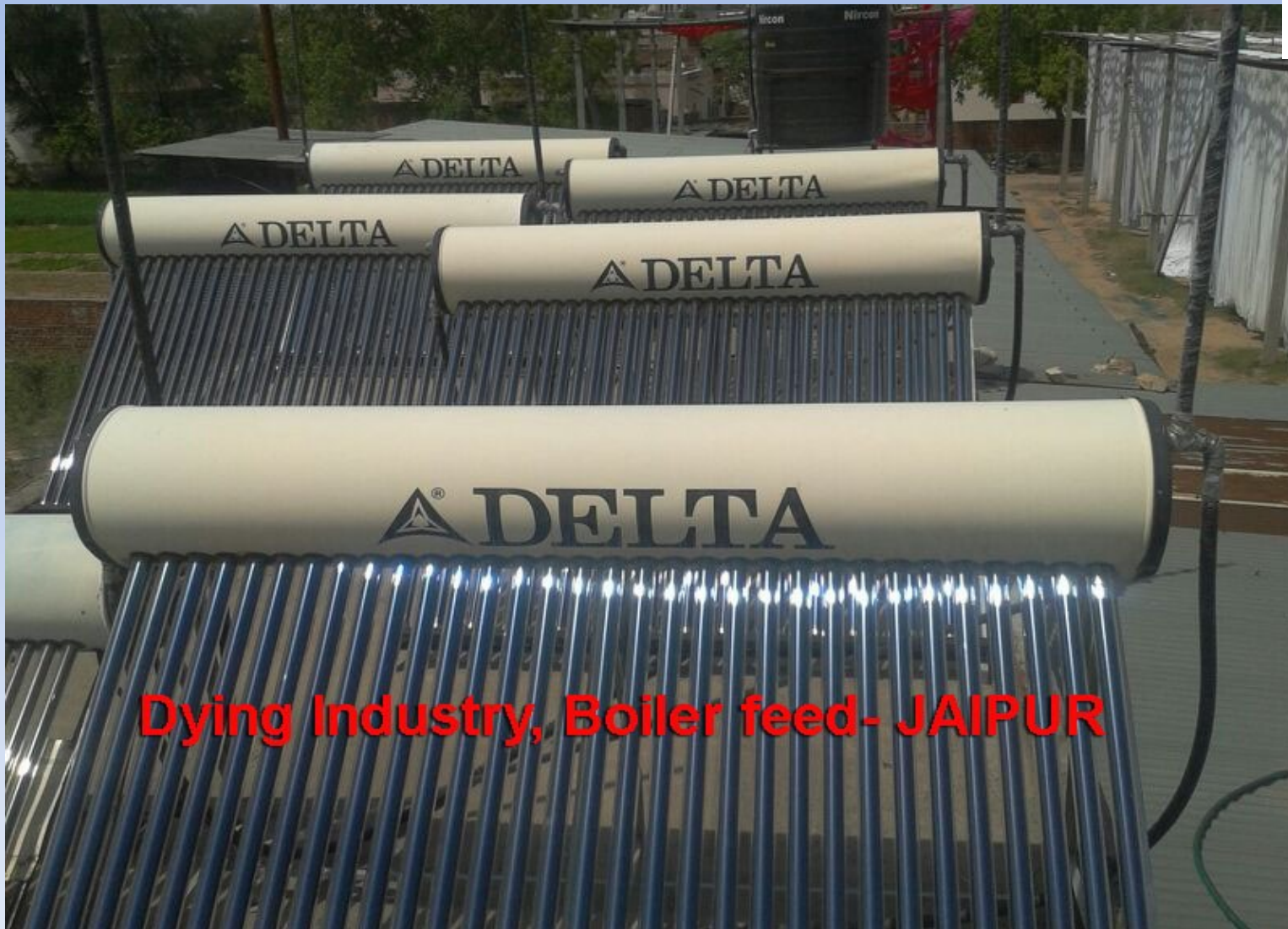


JAIN TIRTH

Jain Derasar, Aglod-Mahesana



INDUSTRIAL BOILER FEED



Dying Industry, Boiler feed- JAIPUR

HOSTEL



Agriculture University- NAVSARI



GUEST HOUSE



Damodar Ind.- Sailvasa



DISABLED WELFER TRUST



**Handicaped Welfare Trust,
Reliance-SURAT**



INDUSTRIAL OIL HEATING



Hot Oil Purpose, Kim-Surat





AN ISO 9001-2008 & ISO 14001 CO.

ડેલ્ટાને મળ્યો તમારો સાથ અમે નિભાવશું આ વિશ્વાસ...

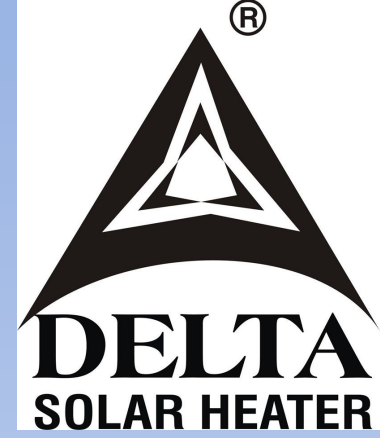
ડેલ્ટા સોલાર જ લગાવો કારણ કે ડેલ્ટા આપે છે

સૌથી મજબૂત ટેન્ક.
ઉત્તમ ગુણવત્તા ની ટયુબ જેથી પાણી ફટાફટ અને
વધારે ગરમ થાય.
વેધર પ્રુફ સ્ટ્રક્ચર અને ટેન્ક કલેક્ટીંગ.
એક્સેલન્ટ સર્વિસ સપોર્ટ.
એવરેજ સોલાર વોટર હીટર કરતા વધારે લાઈફ.
તમારા પૈસાનું ખુર વળતર.



OM ENERGY EQUIPMENT

150 Feet Ring Road, Opp. Echo Glass, Nr. Mavdi Chowkdi,
Rajkot-360 004 Gujarat-India. Phone : 0281-2331709
Mobile : 98795 27503 • www.facebook.com/deltasolarheater
E-mail : info@deltasolars.com • www.deltasolars.com



Thank you