

For High Pressure

350 Cupla

For hydraulic pressures up to 34.5 MPa {352 kgf/cm²}

Working pressure

34.5
34.5 MPa
(352 kgf/cm²)

Valve structure



Two-way shut-off
(Non-Spill)

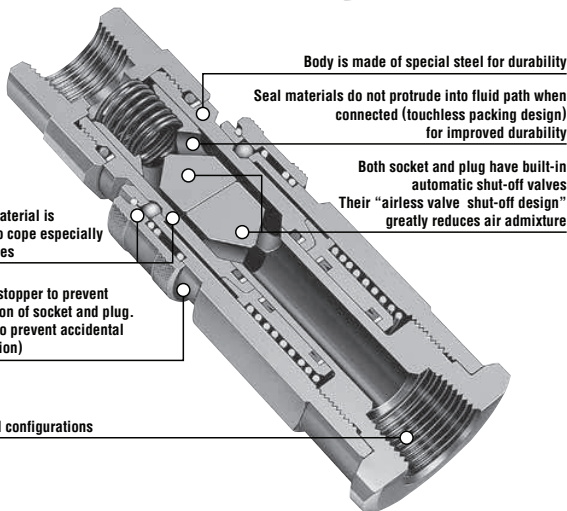
Applicable fluids



Hydraulic oil

Their “airless valve shut-off design” greatly reduces air admixture! Ideal for hydraulic lines with larger pressure fluctuations.

- Locking mechanism to prevent accidental disconnection ensures tight connection even under vibration or impact.
- Both socket and plug have built-in automatic shut-off valves to prevent fluid spill out when disconnected. Easy to handle.



Body is made of special steel for durability

Seal materials do not protrude into fluid path when connected (touchless packing design) for improved durability

Both socket and plug have built-in automatic shut-off valves Their “airless valve shut-off design” greatly reduces air admixture

The body material is quenched to cope especially with impulses

Fitted with stopper to prevent disconnection of socket and plug. (Designed to prevent accidental disconnection)

Various end configurations

Specifications

Body material	Special steel (Nickel-plated)			
Size (Thread)	1/4", 3/8", 1/2", 3/4", 1", 1 1/4", 1 1/2", 2"			
Working pressure	MPa	34.5		
	kgf/cm ²	352		
	bar	345		
	PSI	5000		
Seal material	Seal material	Mark	Working temperature range	Remarks
	Fluoro rubber	FKM (X-100)	-20°C to +180°C	Standard material
Working temperature range	Nitrile rubber	NBR (SG)	-20°C to +80°C	Made-to-order item

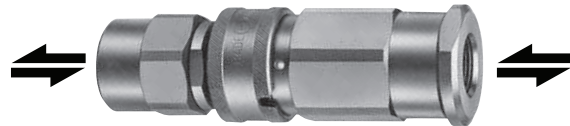
Max. Tightening Torque

Nm (kgf·cm)

Size (Thread)	1/4"	3/8"	1/2"	3/4"	1"	1 1/4"	1 1/2"	2"
Torque	28 (286)	40 (408)	80 (816)	150 (1530)	250 (2550)	500 (5100)	500 (5100)	700 (7140)

Flow Direction

Fluid may flow in either direction from plug or from socket side when coupled.



Interchangeability

Different size socket and plug cannot be connected each other. However, 350-2SP with 350-3SP or 350-10SP with 350-12SP can be connected each other.

Min. Cross-Sectional Area

(mm²)

Model	350-2SP	350-3SP	350-4SP	350-6SP	350-8SP	350-10SP	350-12SP	350-16SP
Min. cross-sectional area	34.2	34.2	73.0	149.6	227.0	452.4	452.4	907.9

Suitability for Vacuum

Not suitable for vacuum application in either connected or disconnected condition.

Admixture of Air on Connection

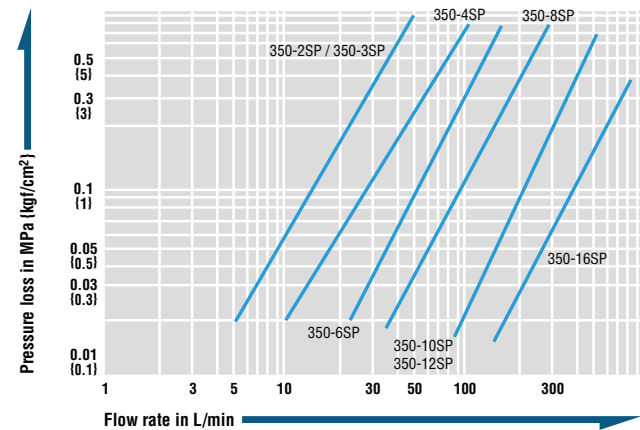
Admixture of air may vary depending upon the usage conditions.

(mL)

Model	350-2SP	350-3SP	350-4SP	350-6SP	350-8SP	350-10SP	350-12SP	350-16SP
Volume of air	0.1	0.1	0.2	0.3	0.5	0.9	0.9	2.0

Flow Rate – Pressure Loss Characteristics

[Test conditions] • Fluid : Hydraulic oil • Temperature : 40°C ± 5°C
• Fluid viscosity : 32 × 10⁻⁶ m²/s • Density : 0.87 × 10³ kg/m³

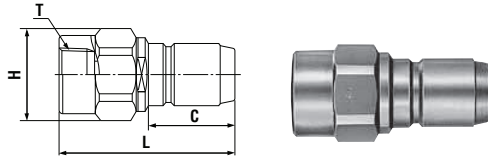


⚠ Precautions for use

Do not connect / disconnect Cuplas when pressure is applied or remaining.

Models and Dimensions

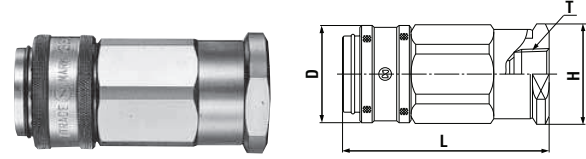
Plug Female thread



Model	Application	Mass (g)	Dimensions (mm)			
			L	C	H(WAF)	T
350-2P	R 1/4	170	(72)	36	Hex.27 x ø29	Rc 1/4
350-3P	R 3/8	167	(72)	36	Hex.27 x ø29	Rc 3/8
350-4P	R 1/2	245	85	40.5	Hex.27 x ø30	Rc 1/2
350-6P	R 3/4	473	(90)	44.5	Hex.41 x ø45	Rc 3/4
350-8P	R 1	1,035	(119)	57	Hex.50 x ø55	Rc 1
350-10P	R 1 1/4	2,700	(144)	75	Hex.70 x ø78	Rc 1 1/4
350-12P	R 1 1/2	2,600	(144)	75	Hex.70 x ø78	Rc 1 1/2
350-16P*	R 2	7,500	(198)	85.5	90 x ø105	Rc 2

* Available on request
 • G thread is available on request.

Socket Female thread



Model	Application	Mass (g)	Dimensions (mm)			
			L	øD	H(WAF)	T
350-2S	R 1/4	360	(82)	(34)	Hex.30	Rc 1/4
350-3S	R 3/8	353	(82)	(34)	Hex.30	Rc 3/8
350-4S	R 1/2	545	(93.5)	(41)	Hex.36	Rc 1/2
350-6S	R 3/4	976	(105.5)	(49)	46 x ø52	Rc 3/4
350-8S	R 1	1,740	(129)	(63)	55 x ø62	Rc 1
350-10S	R 1 1/4	5,600	(180)	89	Hex.80 x ø90	Rc 1 1/4
350-12S	R 1 1/2	5,500	(180)	89	Hex.80 x ø90	Rc 1 1/2
350-16S*	R 2	14,500	(239)	117	105	Rc 2

* Available on request
 • G thread is available on request.

Application Example



Hydraulic unit

Optional Accessory

Purge Adapter

Metal Purge Adapter for hydraulic lines (Semi-standard)

- Can be attached to hydraulic lines to purge residual pressure effectively.

Model	PAD-2 (Part No.CB19855)
Applicable fluid	Hydraulic oil
Material	Steel (With autocatalytic nickel-phosphorus coating)
Working pressure	35.0 MPa, 357 kgf/cm ² , 350 bar, 5080 PSI
Seal material	Nitrile rubber (NBR)
Working temperature range	-5°C to +80

When ordering, please indicate Model Name or part number.
 Semi standard items: As these items are not always in stock, delivery time is subject to confirmation.

