

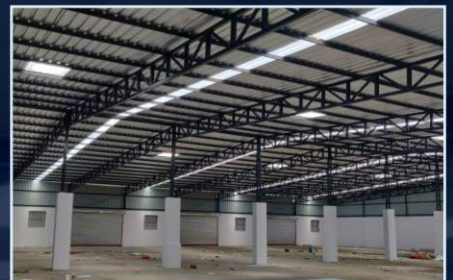


# BUILDING INFRASTRUCTURE WITH EXCELLENCE

Manufacturing with Robust Technology and Automation



Pre-Engineered and Prefabricated Building Components, Supplies and Services



[www.santanisteel.com](http://www.santanisteel.com)



[www.santanisteel.co.in](http://www.santanisteel.co.in)



[www.santaniharbour.com](http://www.santaniharbour.com)

## **SANTANI STEEL**

### **ABOUT US**



We are amongst the leading manufacturers, suppliers and developers of this commendable range of Prefabricated Buildings and Building Components. The range provided by us are highly praised and preferred in the market.

Making of this range is commenced as per standards defined by the industry, utilizing the finest raw materials and advanced machinery.

SANTANI STEEL has been parted into several operational units for reasons of attaining smoother and effective management of the team's operations. Regular up-gradation of technology and tactics ensures our maximum and wider approach in the market.

## **VISION**

To be amongst the most reliable and innovative leaders in steel industry by synergising the best-in-class people, processes, practices and partnerships.

## **MISSION**

To consistently deliver innovative and future-ready steel construction solutions through enterprise, expertise, excellence and empowerment.

## **VALUES**

Our customer centric work environment has so far been the key to our growth and we plan to maintain and further improve on it. Teamwork, Diversity and Respect are followed religiously in our organization with the objective of providing our customers the best products and services.

**Up-gradation & Innovation has always been  
our philosophy to ensure a world class experience for our customers.**



**EXPERIENCED  
TEAM**



**RELIABLE & SECURE  
SERVICES**



**BEST  
VALUE PRODUCTS**



**RICH  
EXPERIENCE**

## SANTANI STEEL ADVANTAGES

### DELIVERY STANDARDS

Well defined process module, micro-planning and excellent logistics facilities aid the company to make all deliveries within the stipulated time frame.

### SERVICE DELIVERY

Our experienced professionals ensure that nothing is given chances vis-à-vis work execution in the field. As a result the client receives the best of the products and services.

### PROVEN & TRACK RECORD

SANTANI STEEL has won many laurels from the countrywide clients for successfully executing the most challenging projects in record time.

### PROFESSIONAL WORK APPROACH

At SANTANI STEEL, professionalism is never an abstract or intangible concept but an essential ingredient of every process & procedure.



## OUR CLIENTELE



**Birla Cellulose**  
Fibres from nature



**SANTANI  
STEEL**

### Registered Office:

502, Indrasan Tower,  
Behind Rangoli Restaurant,  
Fatehgunj, Vadodara,  
Gujarat 390002.

### Contact:

+91-9766289252 / 9769289252

[www.santanisteel.com](http://www.santanisteel.com)

[www.santanisteel.co.in](http://www.santanisteel.co.in)

[www.santaniharbour.com](http://www.santaniharbour.com)

### Email:

[info@santanisteel.com](mailto:info@santanisteel.com)

[enquiries@santanisteel.com](mailto:enquiries@santanisteel.com)

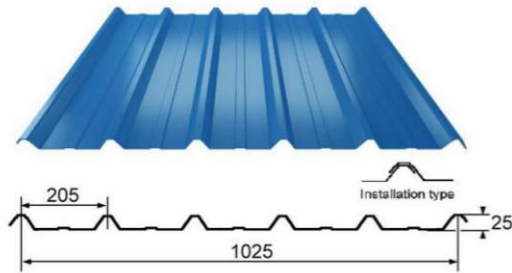
WE ARE SOCIAL



## OUR SUPPLIES



### TRAPEZOIDAL PROFILE ROOFING SHEETS

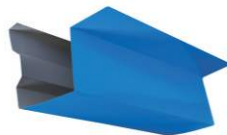


Detail	Bare Zinc Aluminium (BGL)	Color coated Zinc Aluminium (PPGL)	Pre painted Galvanized Iron (PPGI)
Coating Detail	55% AL, 43.5% ZN 1.5% SI as per ASTM 792M,	55% AL, 43.5% ZN 1.5% SI as per ASTM 792M,	99.5% ZN as per IS 277 Color as per IS14246
Tensile Strength	550 MPA	550 MPA	240 MPA
Coating Mass	AZ-150 GSM	AZ-150 GSM Colour (22-25μ)	Z-90/120 GSM Color (22-25μ)
Steel Substrate	0.47mm TCT & 0.50mm TCT AS PER IS 513	0.50/0.55/0.60mm TCT AS PER IS 513	0.30mm TCT TO 0.80mm TCT, AS PER IS 513
Paint		RMP/SMP/PVDF	RMP/SMP/PVDF

### ROOFING ACCESSORIES



ROOF RIDGE



GABLE FLASHING



WATER GUTTER



DOWN TAKE PIPE



NLC (NORTH LIGHT CURVE)



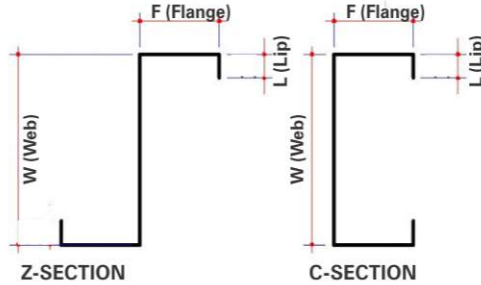
CRIMPED SHEET

### TURBO AIR VENTILATORS



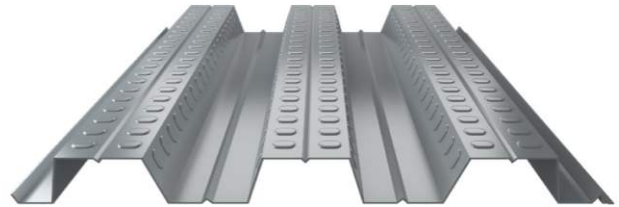
AVAILABLE SIZES	FAN SPECIFICATION	
	Neck Dia 21"	Neck Dia 24"
Throat Diameter	28"	32"
Blade Material	Aluminium	Aluminium
No. of Blades	36nos.	42nos.
Blade Thickness	0.46-0.50mm	0.46-0.50mm
Types of Base Plate	FRP/ Polycarbonate	FRP/ Polycarbonate

## PRE-GALVANIZED Z and C PURLINS



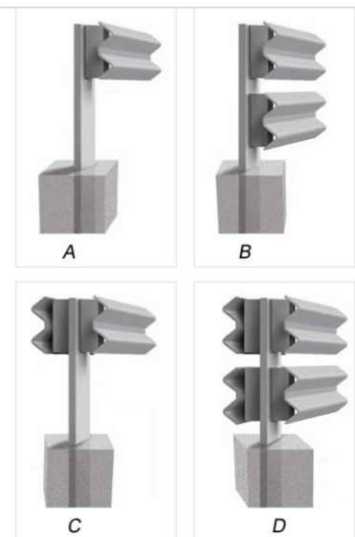
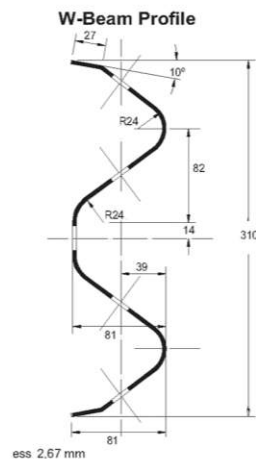
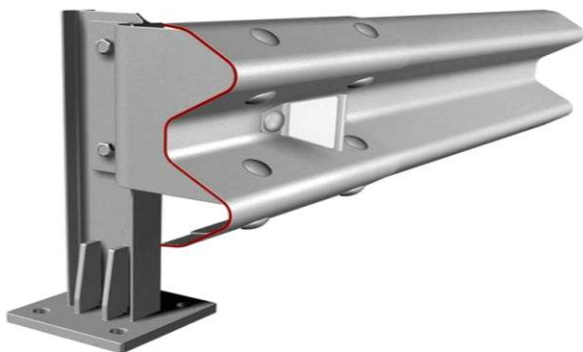
W	F	L
150mm	60mm	15/20
200mm	65mm	15/20
250mm	70mm	15/20
300mm	75mm	15/20

## PRE-GALVANIZED DECKING SHEETS



				Allowable Loads				
Variant	A	B	C	Sheet Thickness/ Spanin mm	0.80mm	1.00mm	1.20mm	
Thickness (3mm)	0.80	1.00	1.20					
Unit Weight (Kg/mt2)	8.08	10.10	12.11		1000	2836 kg/mt2	4407 kg/mt2	3526 kg/mt2
Zn Coating Mass (GSM)	120	120	120		1200	1970 kg/mt2	3060kg/mt2	2449 kg/mt2
Yield Strength Ultimate					1400	1447 kg/mt2	2248 kg/mt2	1799 kg/mt2
Tensile Strength (MPA)	250/345	250/345	250/345		1600	1108 kg/mt2	1721 kg/mt2	1377 kg/mt2
Moment of Inertia (Cm4)	48.91	61.13	76.40					
Section Module (Cm3)	18.91	23.51	29.38					

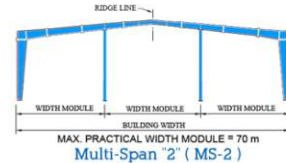
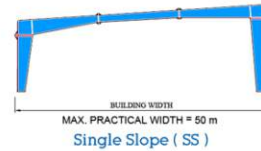
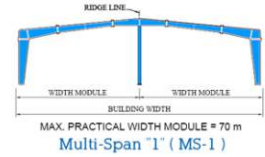
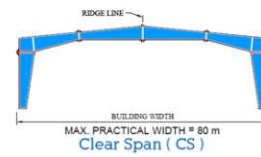
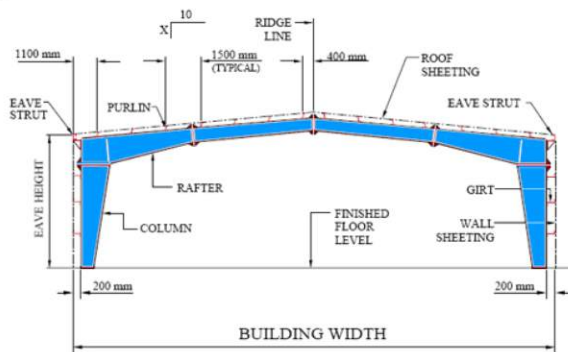
## W-BEAM CRASH BARRIER



## OUR PROJECTS



### PRE-ENGINEERED BUILDING MODULES



### NOMENCLATURE

#### Primary Member

Rafter, Columns, Crane Beams etc.

#### Secondary Member

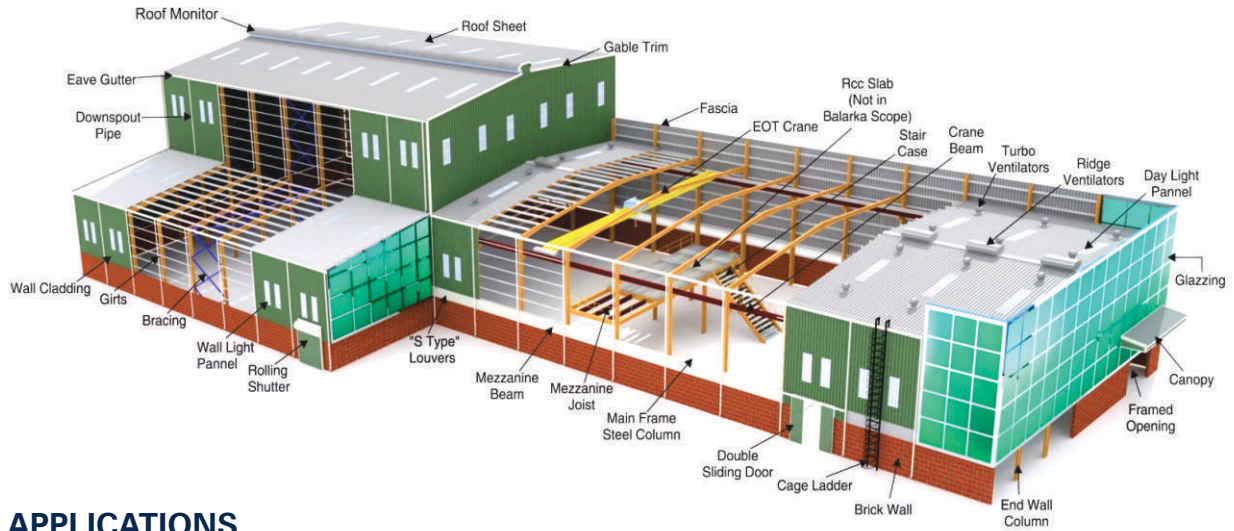
Purlins, Tie rods, Angle Bracings, High Tensile Bolts and Washers.

#### Roofing, Cladding & Accessories

Top Roof, wall Cladding, Skylights, Ventilators, Louvers, Down spouts, etc.



## A QUICK GLIMPSE ON PRE-ENGINEERED BUILDING SYSTEM



## APPLICATIONS



**Factory**



**Warehouse**



**Workshop**



**Community Hall**



**Commercial Showrooms**



### QUICK QUOTES

**Faster Delivery  
Stability Warranty**

**Simple Execution  
Low Maintenance**

**Ease in Mobility**

--	--	--