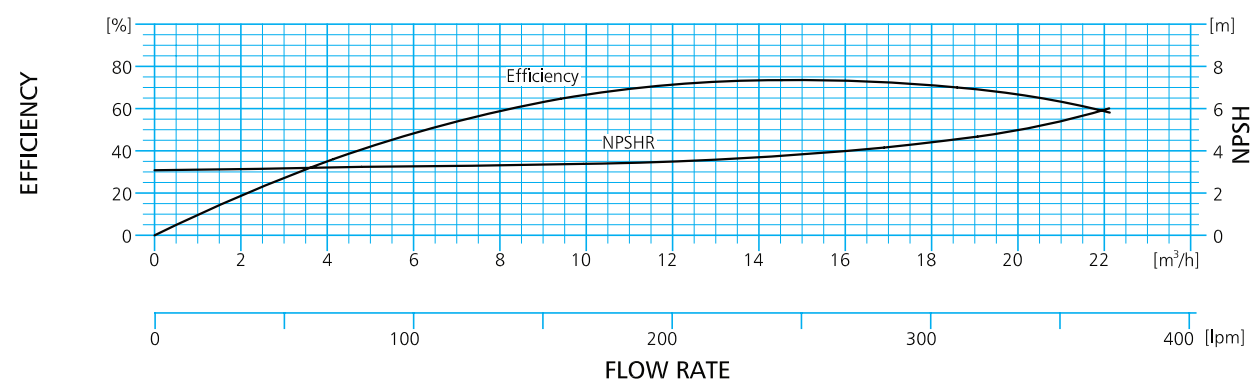
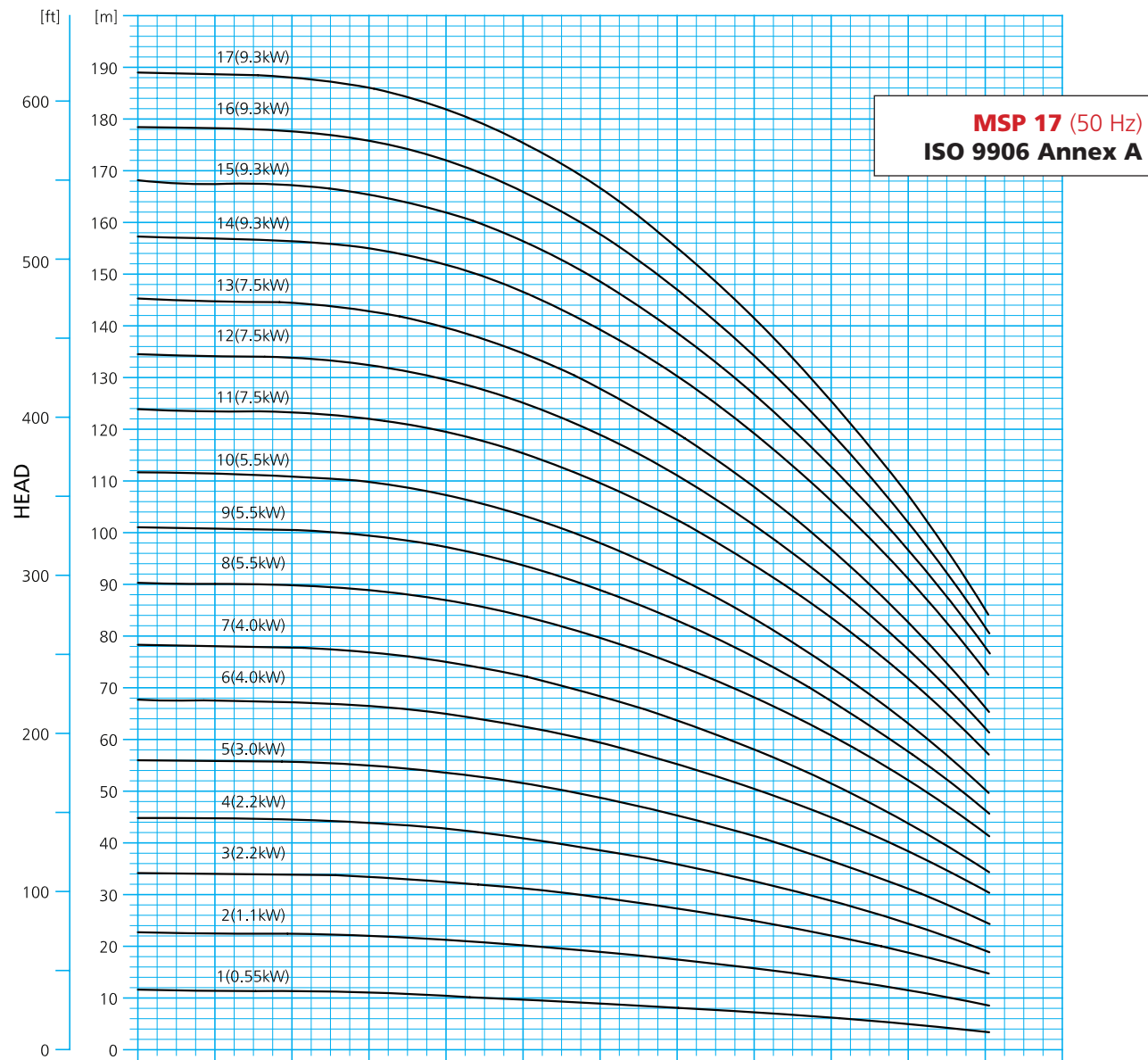




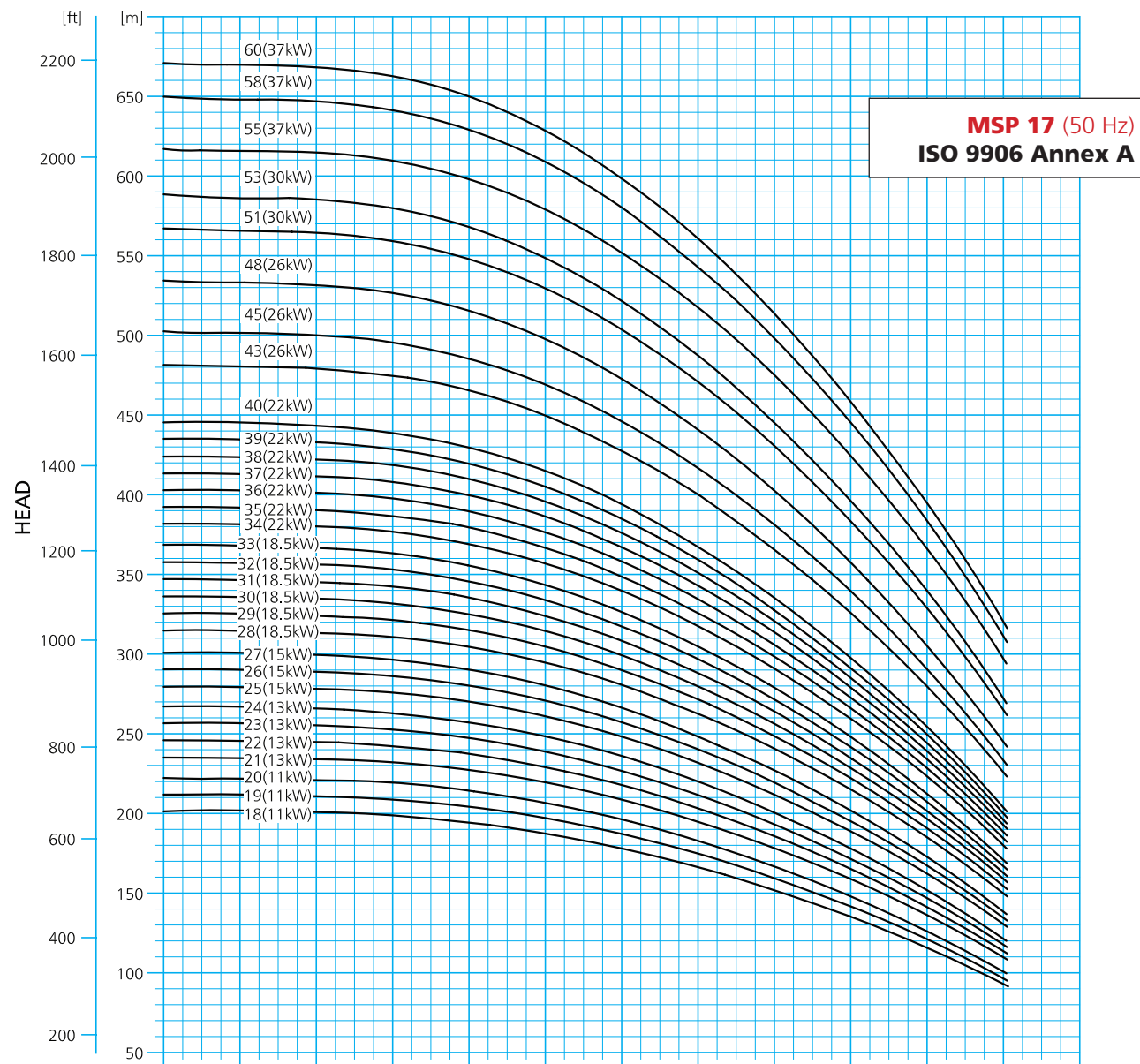
MASCOT
Pump Limited
An ISO Certified Company



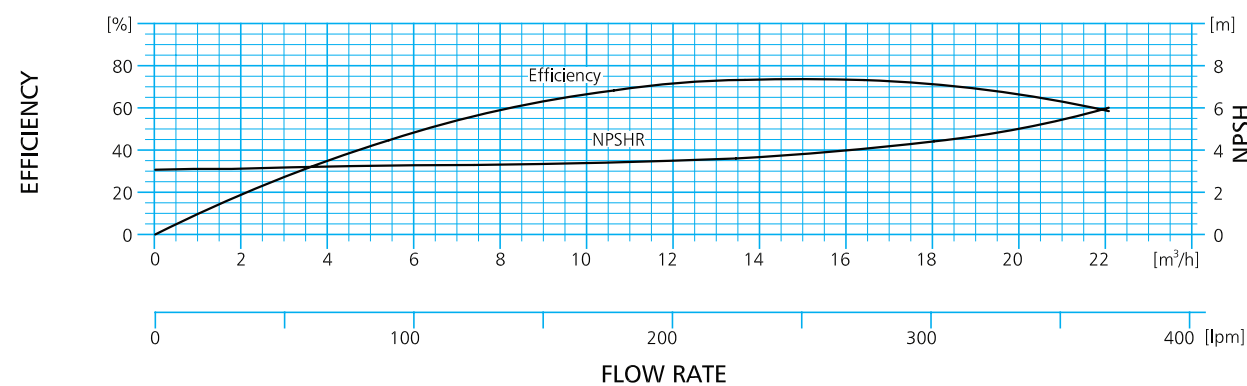
MSP-17	Motor Rating		Total Head In (m)												
	M3 /h	l/min.	0	2	4	6	8	10	12	14	16	18	20	22	
Model	[kW]	[HP]	12	11	11	11	10	10	9	8	7	6	5	4	
MSP17-1	0.55	0.75	12	11	11	11	10	10	9	8	7	6	5	4	
MSP17-2	1.1	1.5	23	23	22	22	21	20	19	17	16	14	12	9	
MSP17-3	2.2	3	34	34	34	33	33	31	29	27	25	22	19	15	
MSP17-4	2.2	3	45	45	44	44	43	41	39	36	33	29	24	19	
MSP17-5	3	4	56	56	56	55	54	51	49	45	41	37	31	25	
MSP17-6	4	5.5	68	67	67	66	65	63	59	55	50	45	38	31	
MSP17-7	4	5.5	78	78	78	77	75	72	68	64	58	52	44	35	
MSP17-8	5.5	7.5	90	90	90	89	87	84	80	74	68	61	52	42	
MSP17-9	5.5	7.5	101	101	100	99	97	94	89	83	76	67	58	46	
MSP17-10	5.5	7.5	112	111	111	110	107	103	98	91	83	74	63	50	
MSP17-11	7.5	10	124	124	123	122	119	115	110	102	94	84	72	58	
MSP17-12	7.5	10	135	134	134	132	130	125	119	111	101	90	77	62	
MSP17-13	7.5	10	145	145	144	143	140	135	128	119	109	97	83	66	
MSP17-14	9.3	12.5	157	157	156	155	152	147	139	130	119	106	91	74	
MSP17-15	9.3	12.5	168	168	167	165	162	156	149	139	127	113	97	78	
MSP17-16	9.3	12.5	179	178	178	176	172	166	158	147	134	119	102	82	
MSP17-17	9.3	12.5	189	189	188	186	182	175	166	155	141	126	107	86	



MASCOT
Pump Limited
An ISO Certified Company



MSP 17 (50 Hz)
ISO 9906 Annex A

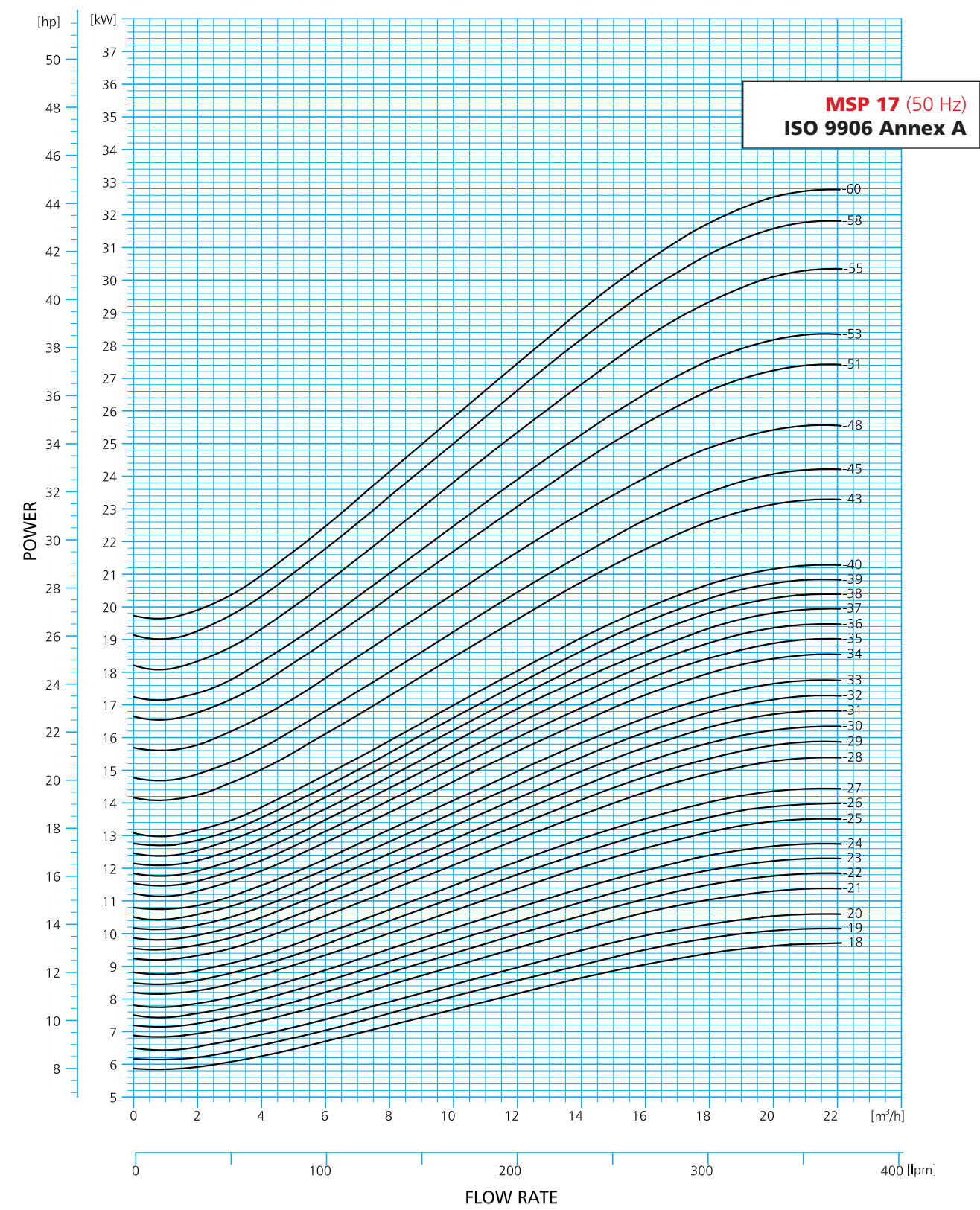
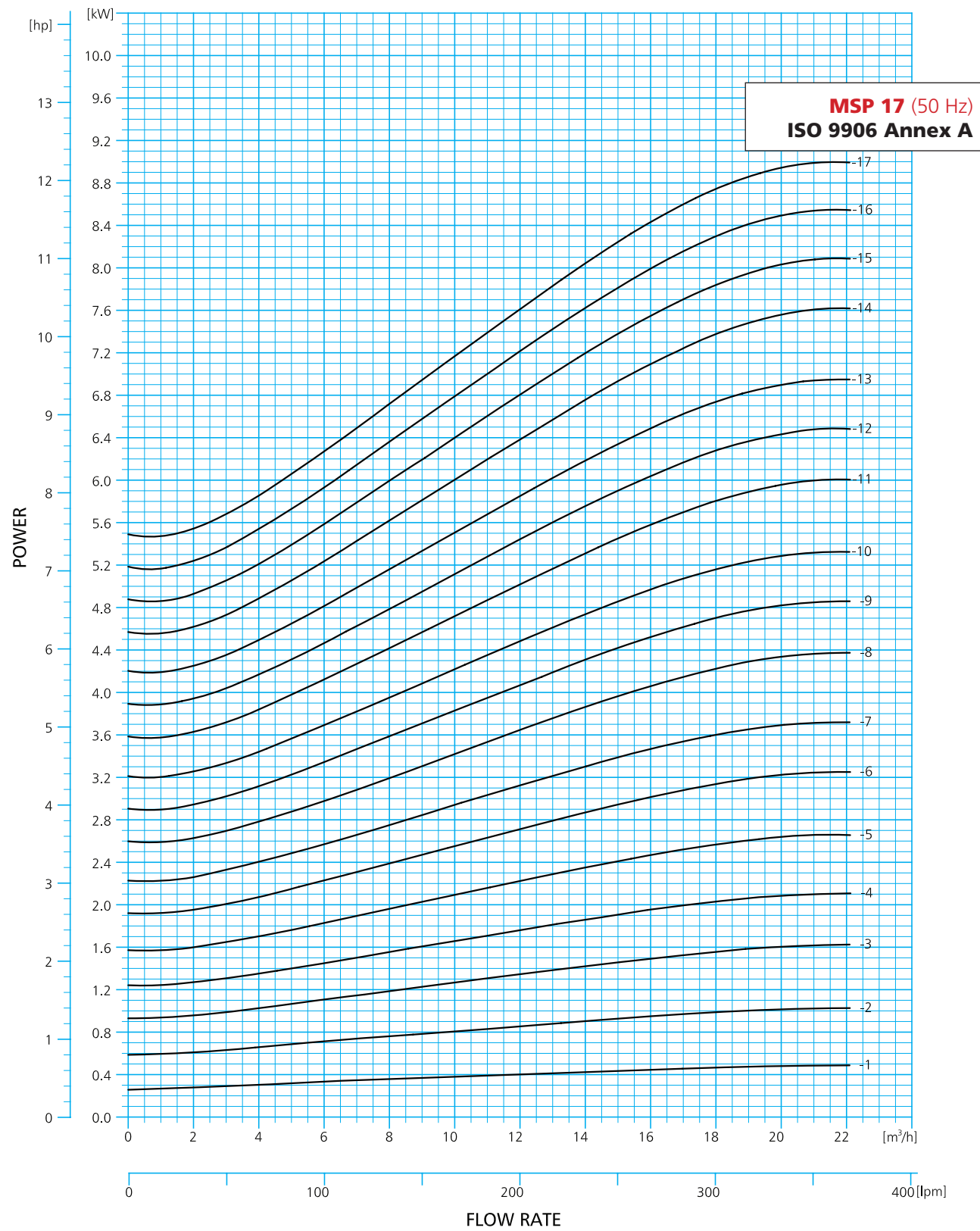


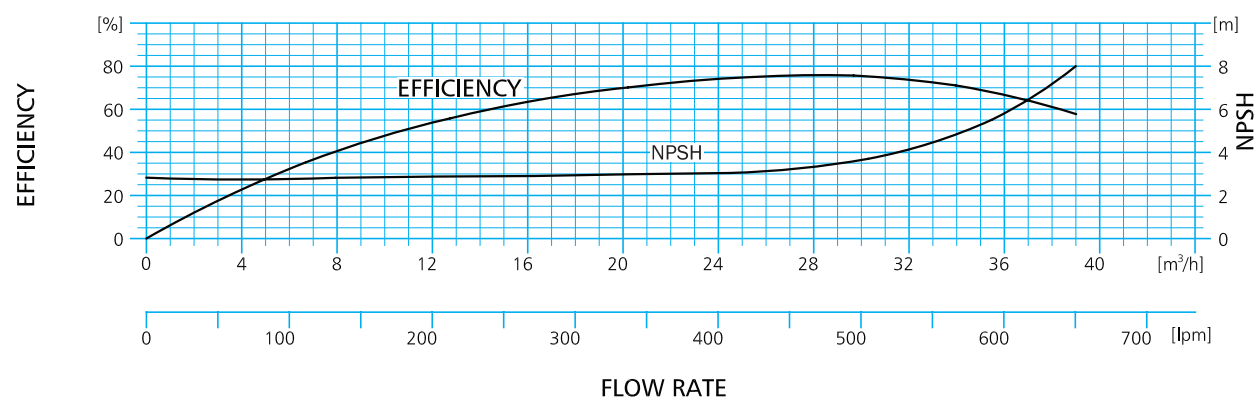
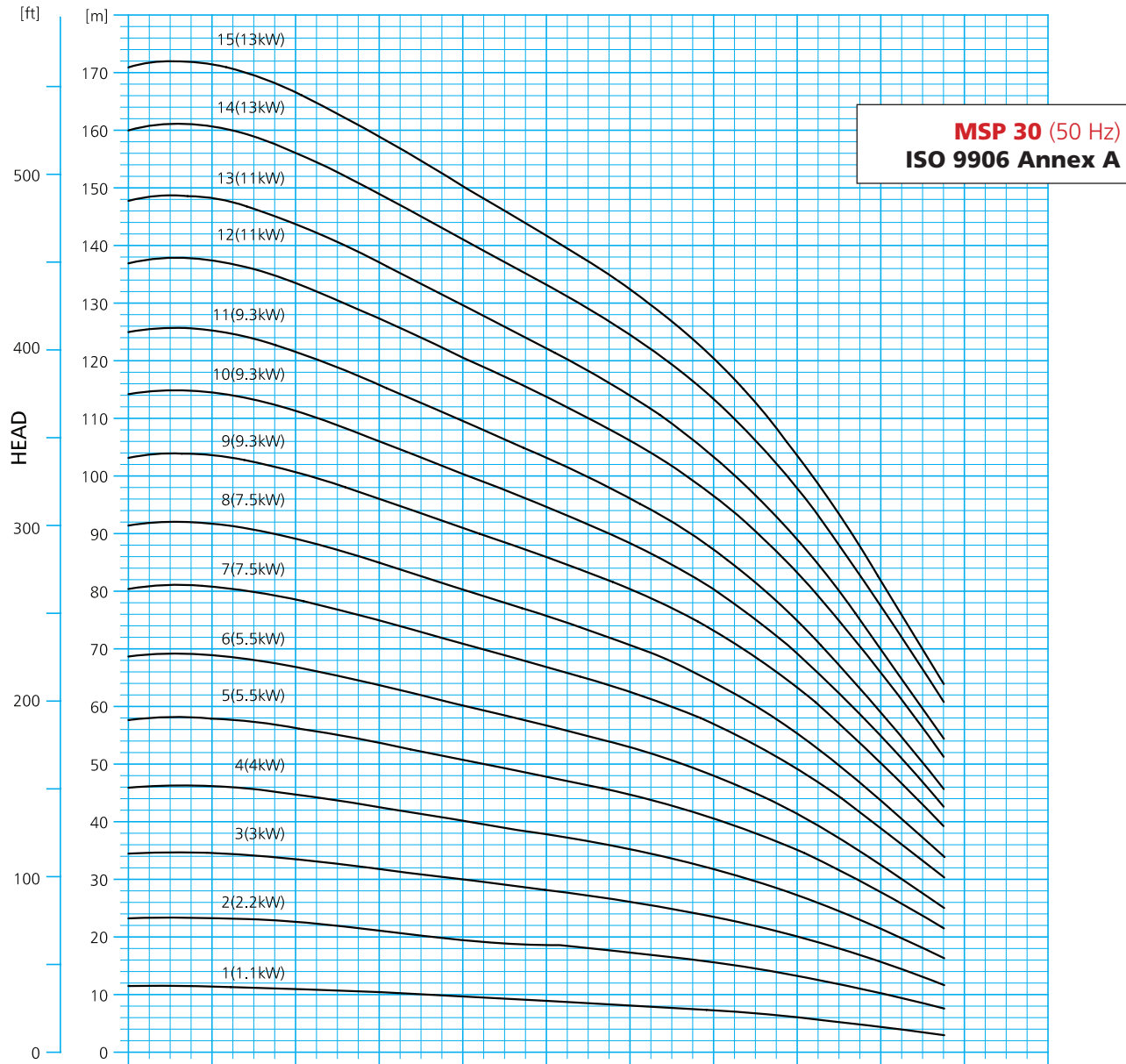
MSP-17	M3 /h	0	2	4	6	8	10	12	14	16	18	20	22
	l/min.	0	33.3	66.7	100	133.3	166.7	200	233.3	266.7	300	333.3	366.7

Model	Motor Rating		Total Head In (m)											
	[kW]	[HP]	202	201	200	199	194	188	178	167	152	136	116	94
MSP17-18	11	15	202	201	200	199	194	188	178	167	152	136	116	94
MSP17-19	11	15	212	212	211	209	204	197	187	175	160	142	121	97
MSP17-20	11	15	223	222	221	219	214	207	196	183	167	148	126	101
MSP17-21	13	17.5	235	235	234	232	227	220	209	195	179	159	137	110
MSP17-22	13	17.5	246	246	245	243	237	229	218	204	186	166	142	114
MSP17-23	13	17.5	257	256	255	253	248	239	227	212	193	172	147	118
MSP17-24	13	17.5	267	267	266	263	258	248	236	220	201	178	152	122
MSP17-25	15	20	280	279	279	276	270	261	248	232	212	189	162	131
MSP17-26	15	20	291	290	289	286	280	271	257	240	220	196	168	135
MSP17-27	15	20	301	300	300	297	290	280	266	249	227	202	173	139
MSP17-28	18.5	25	315	314	314	311	305	295	281	263	241	215	186	151
MSP17-29	18.5	25	326	325	324	321	315	305	290	272	249	222	191	155
MSP17-30	18.5	25	336	336	335	332	325	315	299	280	257	229	197	159
MSP17-31	18.5	25	347	346	346	342	336	324	309	289	264	236	202	163
MSP17-32	18.5	25	358	357	356	353	346	334	318	297	272	242	208	168
MSP17-33	18.5	25	368	368	367	363	356	344	327	305	279	249	213	172
MSP17-34	22	30	382	381	380	377	369	357	340	318	291	260	223	181
MSP17-35	22	30	392	392	391	387	380	367	349	326	299	266	229	185
MSP17-36	22	30	403	402	401	398	390	377	358	335	306	273	234	189
MSP17-37	22	30	414	413	412	408	400	386	367	343	314	279	240	193
MSP17-38	22	30	425	424	423	418	410	396	376	351	321	286	245	197
MSP17-39	22	30	435	434	433	429	420	405	385	360	328	292	250	201
MSP17-40	22	30	446	445	444	439	430	415	394	368	336	298	255	205
MSP17-43	26	35	481	481	479	475	466	450	428	400	366	326	280	227
MSP17-45	26	35	503	502	501	496	486	469	446	417	381	339	291	235
MSP17-48	26	35	535	534	532	527	516	498	473	441	403	358	306	246



MASCOT
 Pump Limited
 An ISO Certified Company

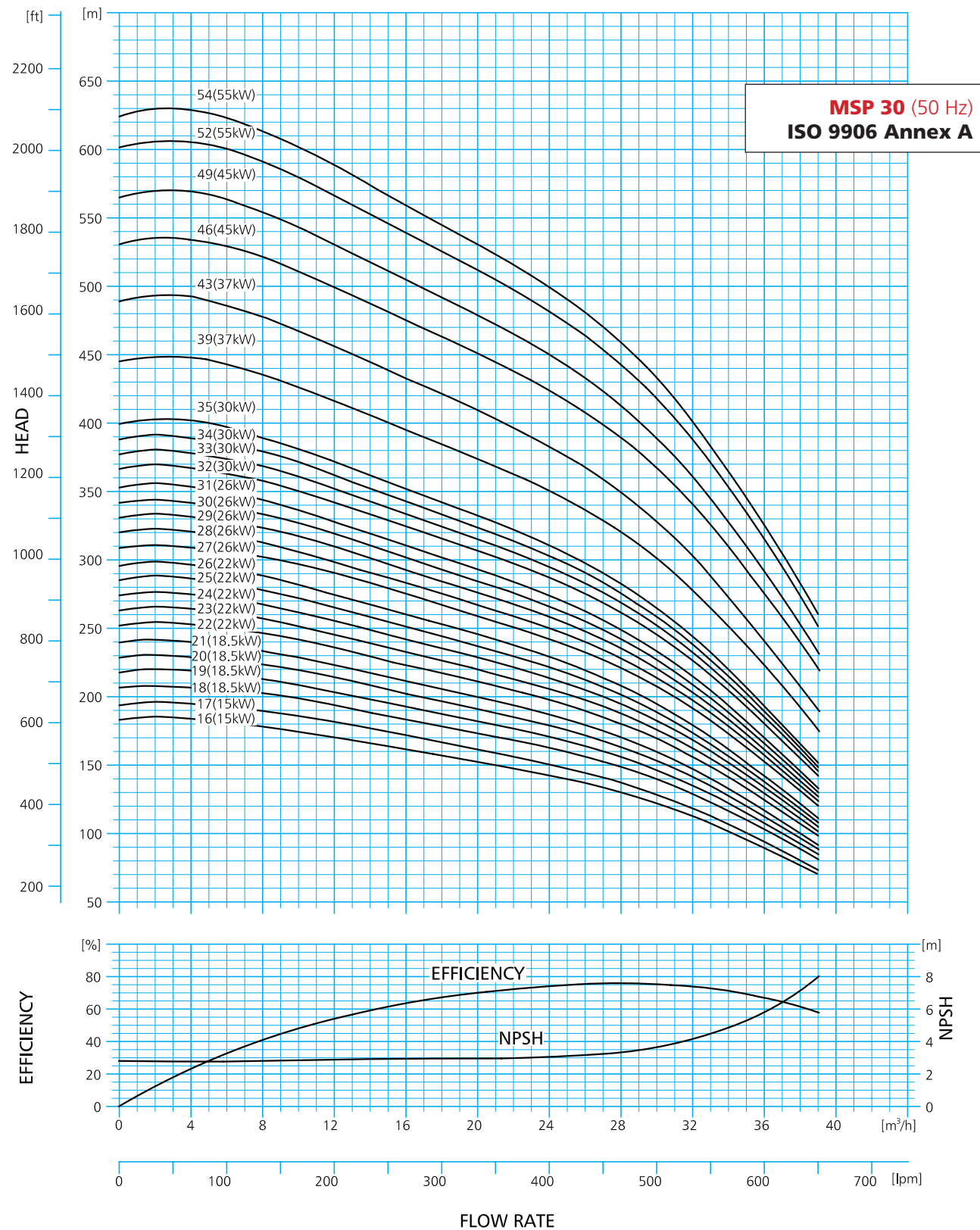




MSP-30		Total Head In (m)											
		M3 /h	0	4	8	12	16	20	24	28	32	39	
Model	Motor Rating												
	[kW]	[HP]	0	66.7	133.3	200	266.7	333.3	400	466.7	533.3	650	
MSP30-1	1.1	1.5	11	11	11	10	10	9	8	7	6	3	
MSP30-2	2.2	3	23	23	23	21	20	19	17	16	13	8	
MSP30-3	3	4	35	35	33	32	30	28	26	24	20	12	
MSP30-4	4	5.5	46	46	45	43	40	38	35	32	27	16	
MSP30-5	5.5	7.5	58	58	56	54	51	48	45	41	35	22	
MSP30-6	5.5	7.5	69	69	67	64	60	57	53	48	41	25	
MSP30-7	7.5	10	80	81	79	75	71	67	63	57	49	31	
MSP30-8	7.5	10	91	92	89	85	80	76	71	64	55	34	
MSP30-9	9.3	12.5	103	104	101	96	91	86	80	73	63	39	
MSP30-10	9.3	12.5	114	115	111	106	100	95	88	80	69	43	
MSP30-11	9.3	12.5	125	125	122	116	110	103	96	87	75	46	
MSP30-12	11	15	137	137	134	127	121	114	106	97	83	51	
MSP30-13	11	15	148	148	144	137	130	122	114	103	89	55	
MSP30-14	13	17.5	160	161	156	149	141	133	125	113	98	61	
MSP30-15	13	17.5	171	171	167	159	150	142	132	120	104	64	



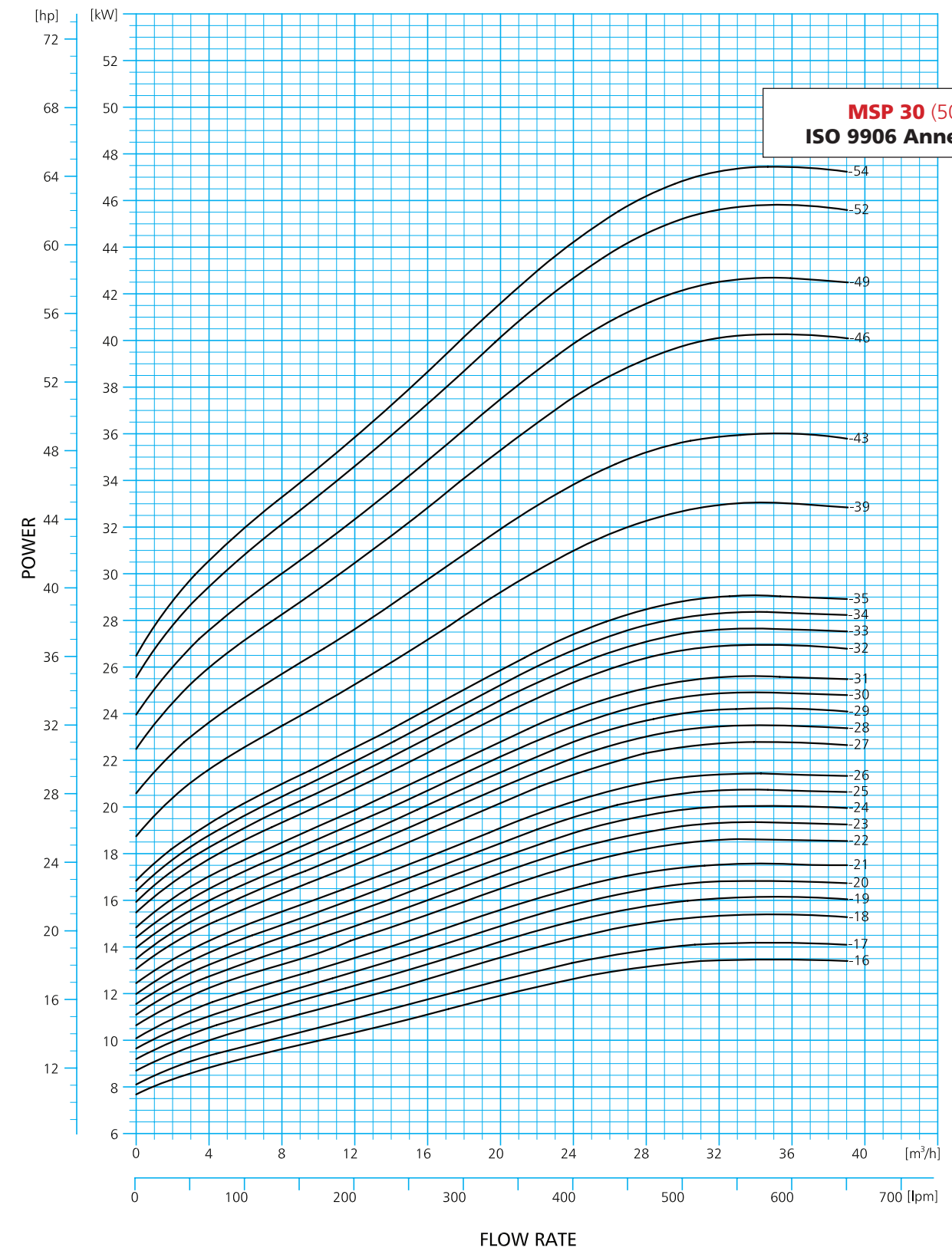
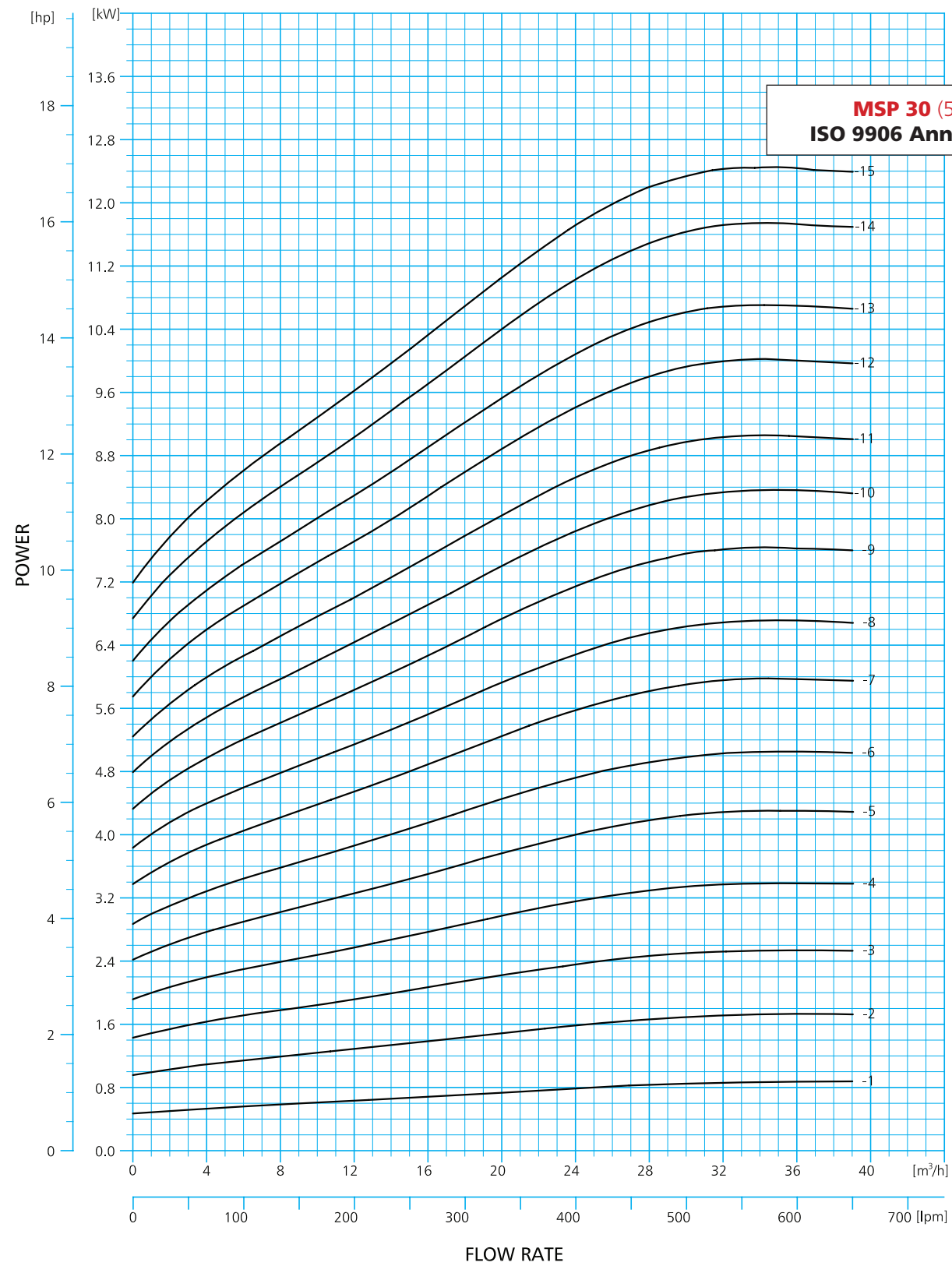
MASCOT
Pump Limited
An ISO Certified Company

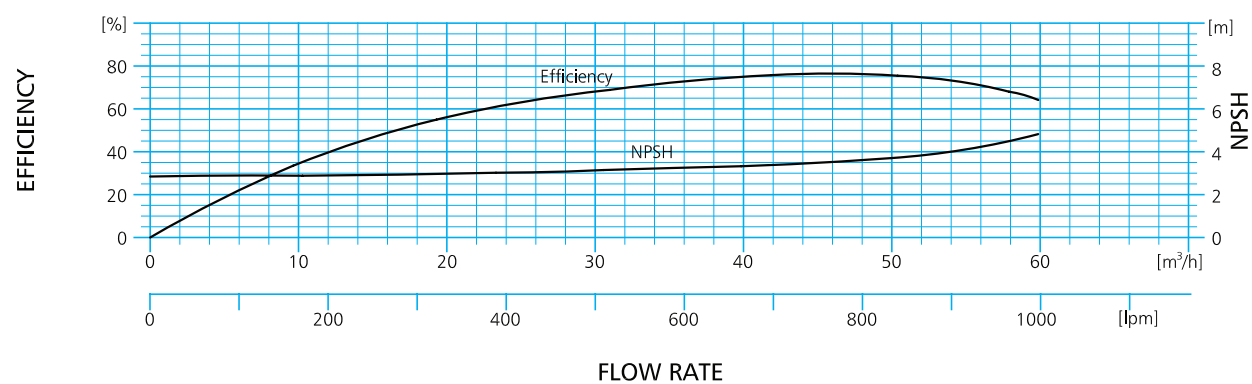
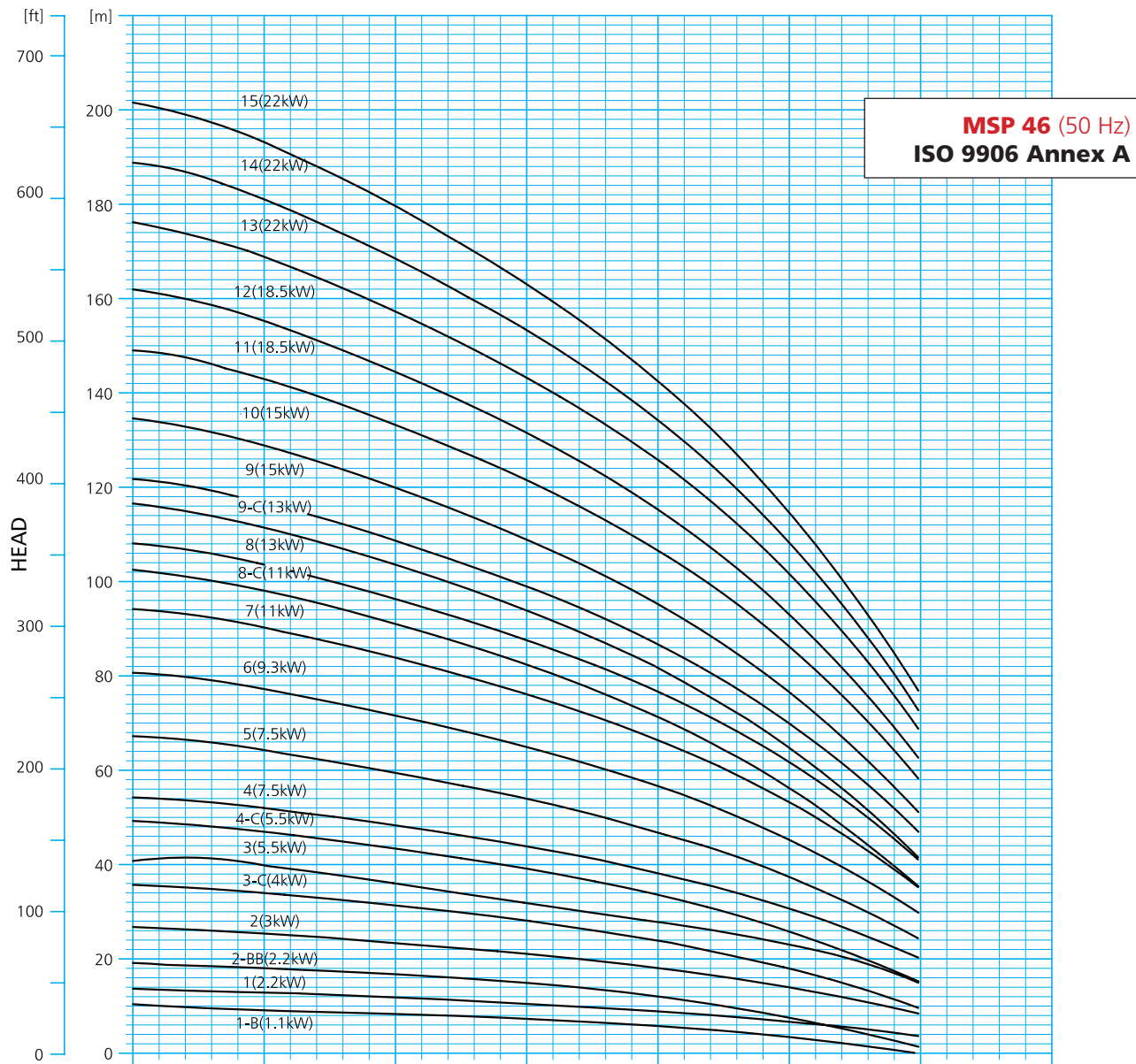


Model	Motor Rating		Total Head In (m)										
	[kW]	[HP]											
			0	4	8	12	16	20	24	28	32	39	
MSP30-16	15	20	183	184	179	171	162	153	143	130	112	70	
MSP30-17	15	20	194	195	189	180	171	161	151	137	118	74	
MSP30-18	18.5	25	207	208	202	193	183	173	163	148	129	82	
MSP30-19	18.5	25	218	219	213	203	193	182	171	156	135	85	
MSP30-20	18.5	25	229	230	223	213	202	191	179	163	141	89	
MSP30-21	18.5	25	240	241	234	223	212	200	187	170	147	92	
MSP30-22	22	30	252	253	246	235	223	211	198	180	156	99	
MSP30-23	22	30	263	264	257	245	233	220	206	188	162	102	
MSP30-24	22	30	274	275	268	255	242	228	214	195	168	105	
MSP30-25	22	30	285	286	278	265	251	237	221	201	174	108	
MSP30-26	22	30	296	297	288	275	260	245	229	208	179	111	
MSP30-27	26	35	309	310	302	288	274	259	242	221	191	121	
MSP30-28	26	35	320	321	313	298	283	267	250	228	197	124	
MSP30-29	26	35	331	332	323	308	292	276	258	235	203	127	
MSP30-30	26	35	342	343	333	318	301	284	266	242	209	130	
MSP30-31	26	35	353	354	344	328	310	293	274	249	215	133	
MSP30-32	30	40	367	368	358	342	324	306	287	262	227	143	
MSP30-33	30	40	378	379	369	352	334	315	295	269	232	146	
MSP30-34	30	40	389	390	379	362	343	324	303	276	238	149	
MSP30-35	30	40	399	401	390	372	352	332	310	283	244	152	
MSP30-39	37	50	445	447	435	416	395	374	351	320	278	176	
MSP30-43	37	50	489	491	478	456	433	409	383	350	303	190	
MSP30-46	45	60	531	535	521	499	475	451	424	389	341	220	
MSP30-49	45	60	565	568	554	530	504	478	450	413	361	233	



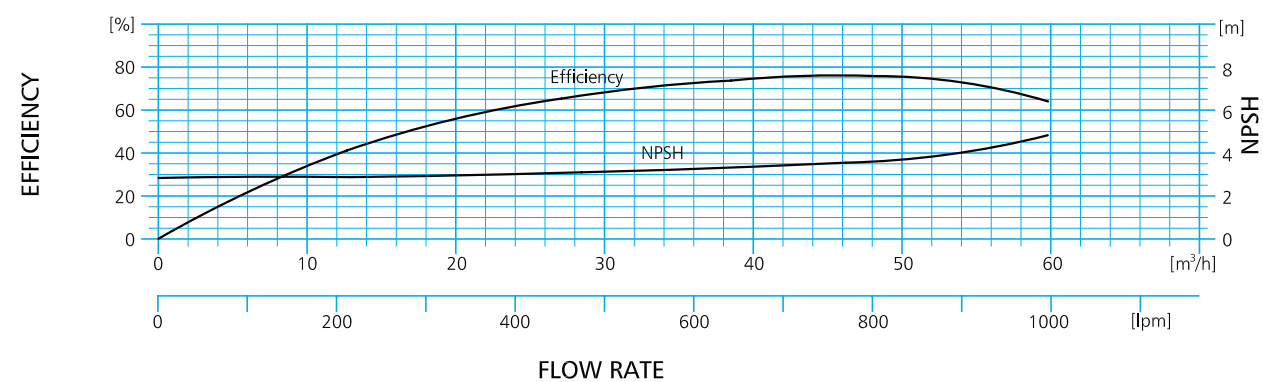
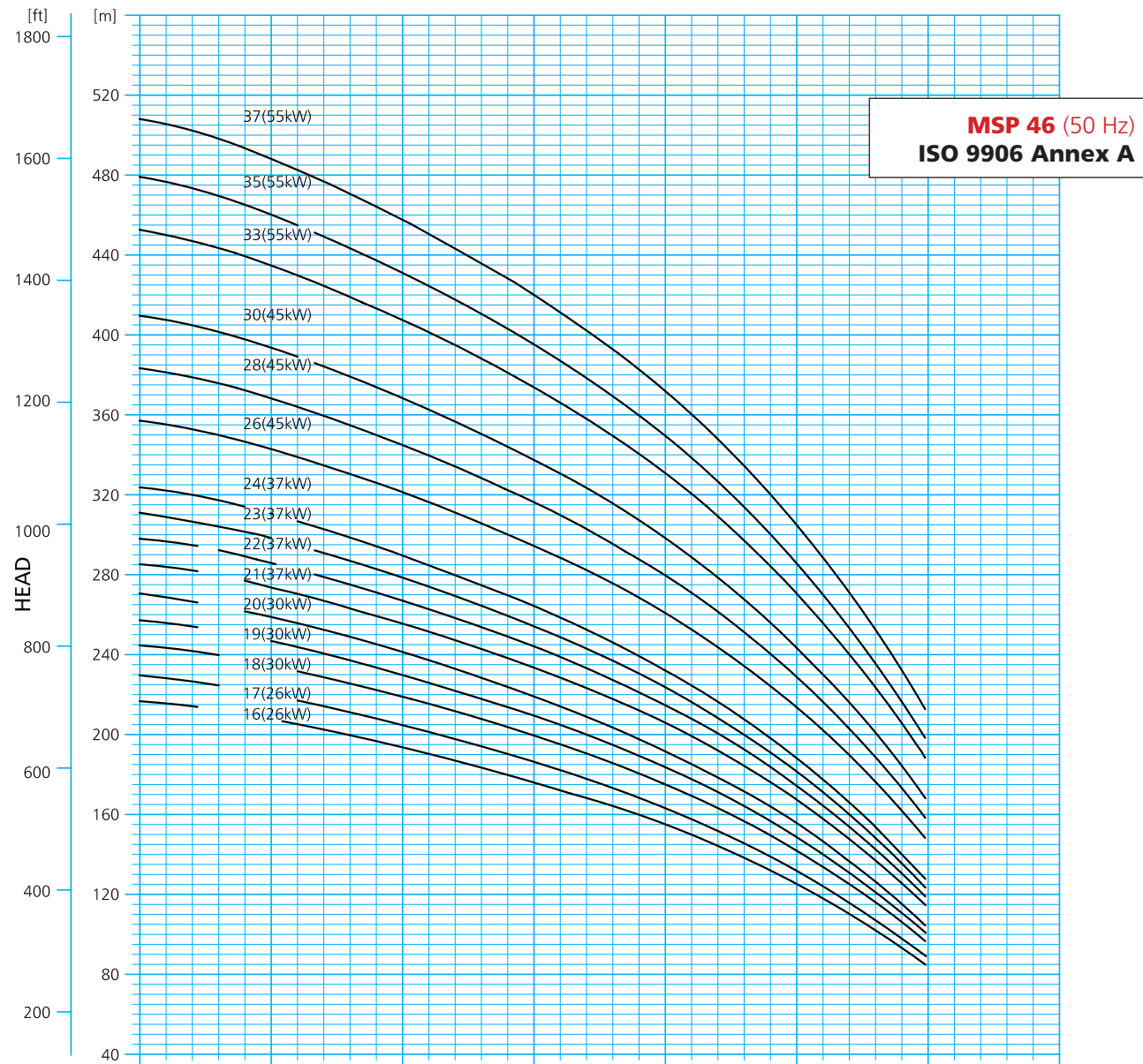
MASCOT
 Pump Limited
 An ISO Certified Company





MSP-46	M3/h	0	5	10	15	20	25	30	35	40	45	50	55	59.8
	l/min.	0	83.3	166.7	250	333.3	416.7	500	583.3	666.7	750	833.3	916.7	996.7

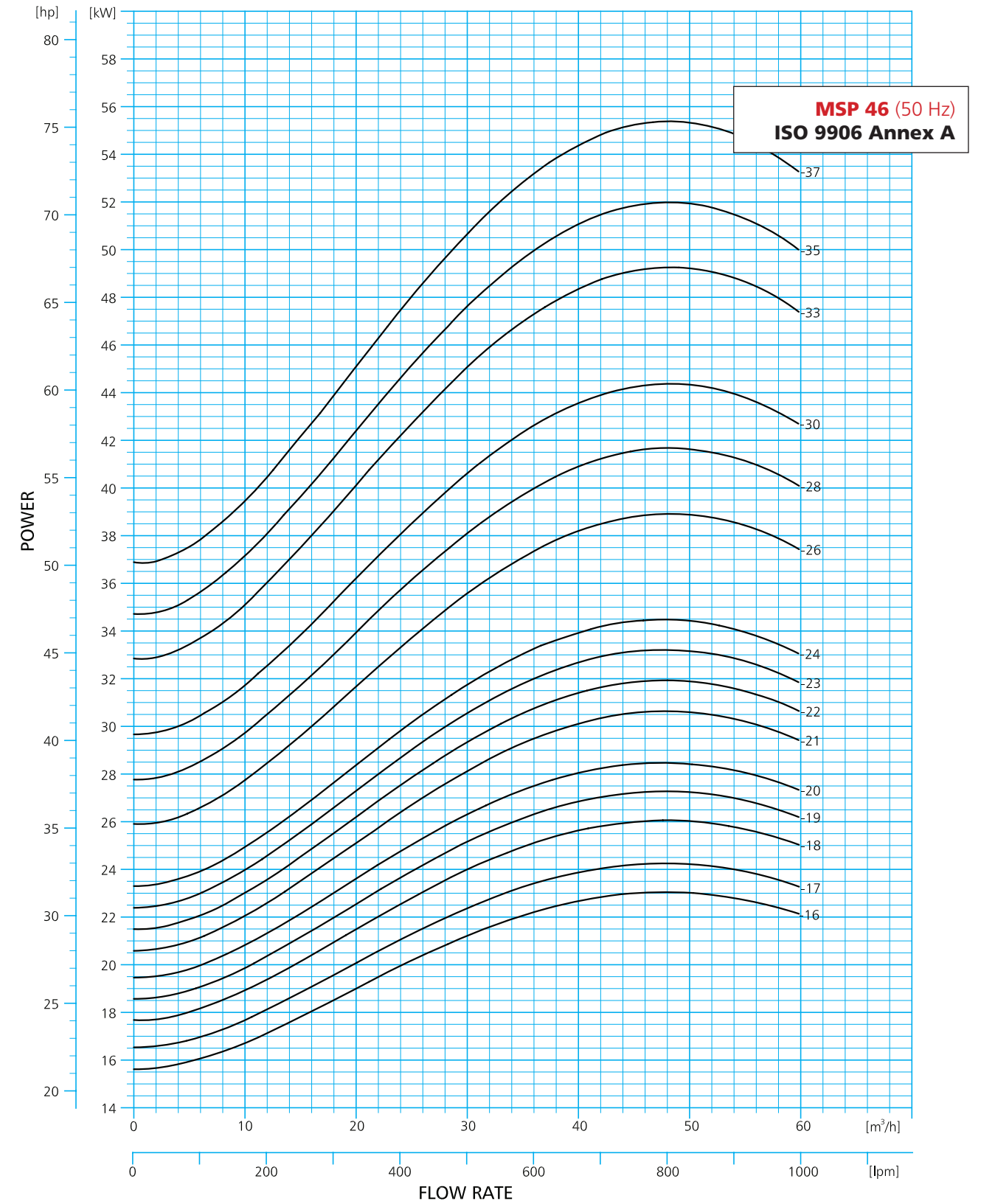
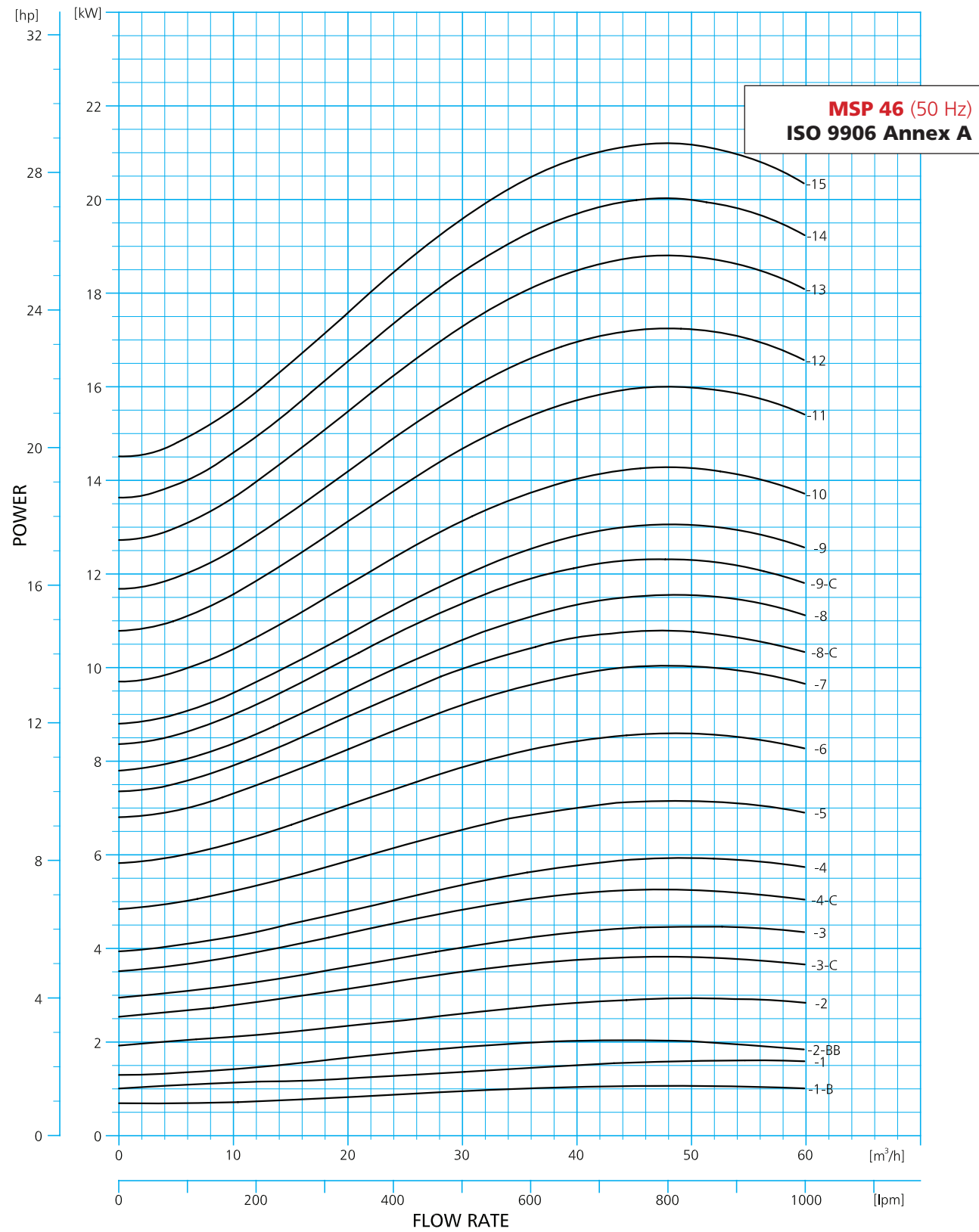
Model	Motor Rating		Total Head In (m)												
	[kW]	[HP]	19	19	18	17	17	16	15	14	12	10	8	5	1
MSP46-2-BB	2.2	3	19	19	18	17	17	16	15	14	12	10	8	5	1
MSP46-2	3	4	27	26	25	24	23	22	21	20	18	16	14	11	9
MSP46-3-C	4	5.5	36	35	34	33	31	30	28	26	24	21	18	14	10
MSP46-3	5.5	7.5	41	41	40	38	36	34	32	30	28	26	23	20	15
MSP46-4-C	5.5	7.5	49	48	47	45	43	41	39	37	34	30	26	21	15
MSP46-4	7.5	10	54	53	52	50	48	46	44	41	38	35	31	26	20
MSP46-5	7.5	10	67	66	64	62	60	57	54	51	47	43	37	31	24
MSP46-6	9.3	12.5	81	79	77	75	72	68	65	61	57	51	45	38	30
MSP46-7	11	15	94	93	90	87	84	80	76	72	66	60	53	45	35
MSP46-8-C	11	15	103	101	98	95	91	87	82	77	71	64	56	46	36
MSP46-8	13	17.5	108	106	104	100	96	92	88	83	77	70	62	52	41
MSP46-9-C	13	17.5	117	115	112	108	104	99	94	88	82	74	65	54	42
MSP46-9	15	20	122	120	117	113	109	104	99	93	87	79	70	59	47
MSP46-10	15	20	135	132	129	125	120	115	109	103	95	87	77	65	51
MSP46-11	18.5	25	149	147	143	138	133	128	122	115	107	97	86	73	59
MSP46-12	18.5	25	162	159	155	150	145	138	132	124	115	105	93	79	63
MSP46-13	22	30	176	173	169	163	157	151	143	135	126	115	102	86	69
MSP46-14	22	30	189	186	181	175	169	161	153	144	134	122	108	92	73
MSP46-15	22	30	202	198	193	187	180	172	163	154	143	130	115	97	77



MSP-46	M3 /h	0	5	10	15	20	25	30	35	40	45	50	55	59.8	
	l/min.	0	83.3	166.7	250	333.3	416.7	500	583.3	666.7	750	833.3	916.7	996.7	
Model	Motor Rating		Total Head In (m)												
	[kW]	[HP]	217	213	208	201	193	185	176	166	155	141	125	106	85
MSP46-16	26	35	217	213	208	201	193	185	176	166	155	141	125	106	85
MSP46-17	26	35	229	226	220	213	205	196	186	175	163	149	132	112	89
MSP46-18	30	40	244	241	234	227	219	209	199	188	175	160	142	121	97
MSP46-19	30	40	257	253	247	239	230	220	209	197	183	167	148	126	101
MSP46-20	30	40	270	265	259	251	241	230	219	206	192	175	155	132	105
MSP46-21	37	50	285	280	273	265	255	245	234	221	206	188	167	143	115
MSP46-22	37	50	298	293	286	277	267	256	244	230	215	196	174	148	119
MSP46-23	37	50	311	306	298	289	278	267	254	240	223	204	181	154	124
MSP46-24	37	50	324	318	310	300	289	277	264	249	232	212	188	160	128
MSP46-26	45	60	357	351	343	332	321	308	295	279	261	239	214	183	149
MSP46-28	45	60	383	377	368	357	345	331	316	299	280	256	229	196	159
MSP46-30	45	60	410	403	393	381	368	353	337	319	298	273	244	208	169
MSP46-33	55	75	452	445	435	422	407	391	374	354	331	303	271	232	189

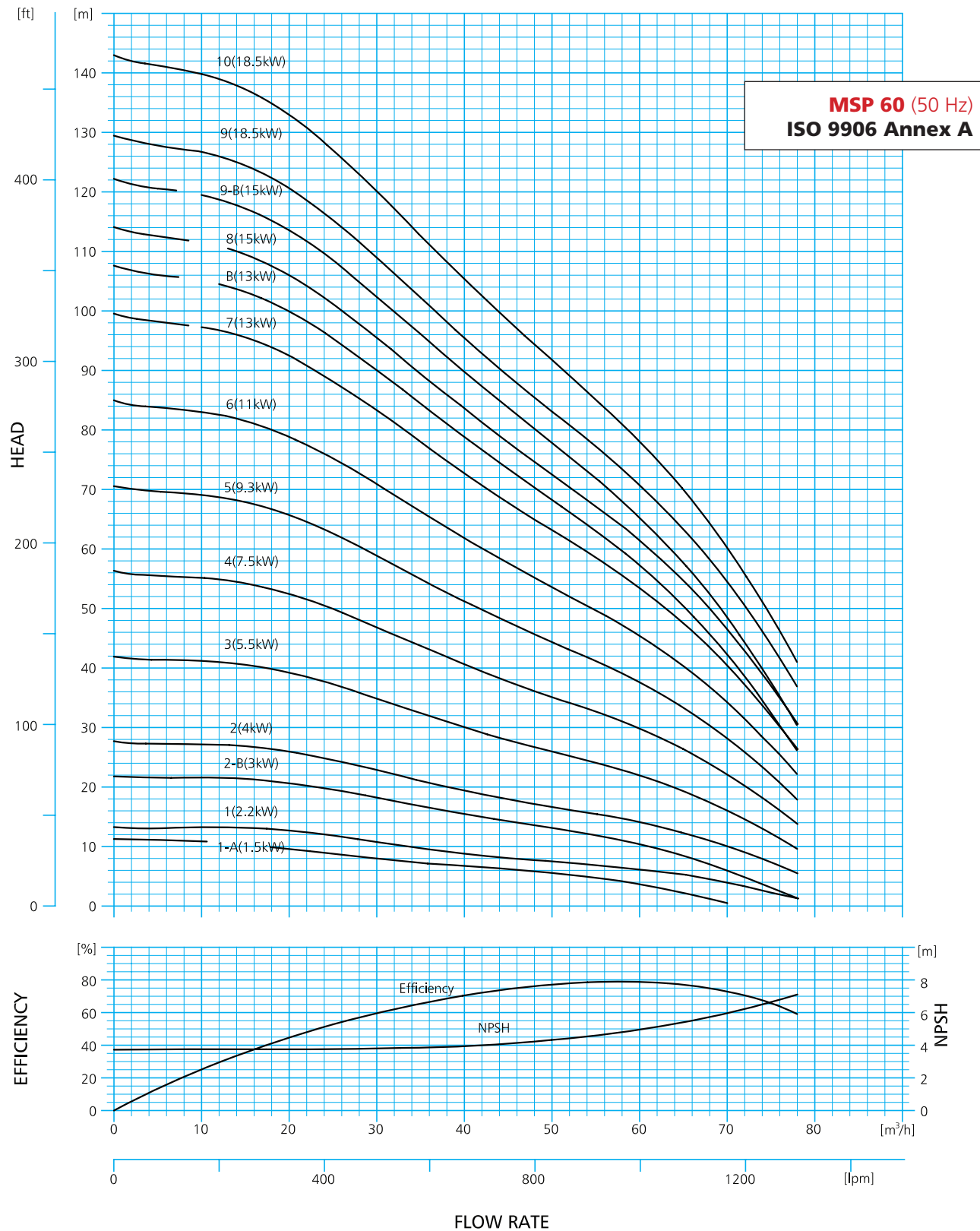


MASCOT
 Pump Limited
 An ISO Certified Company

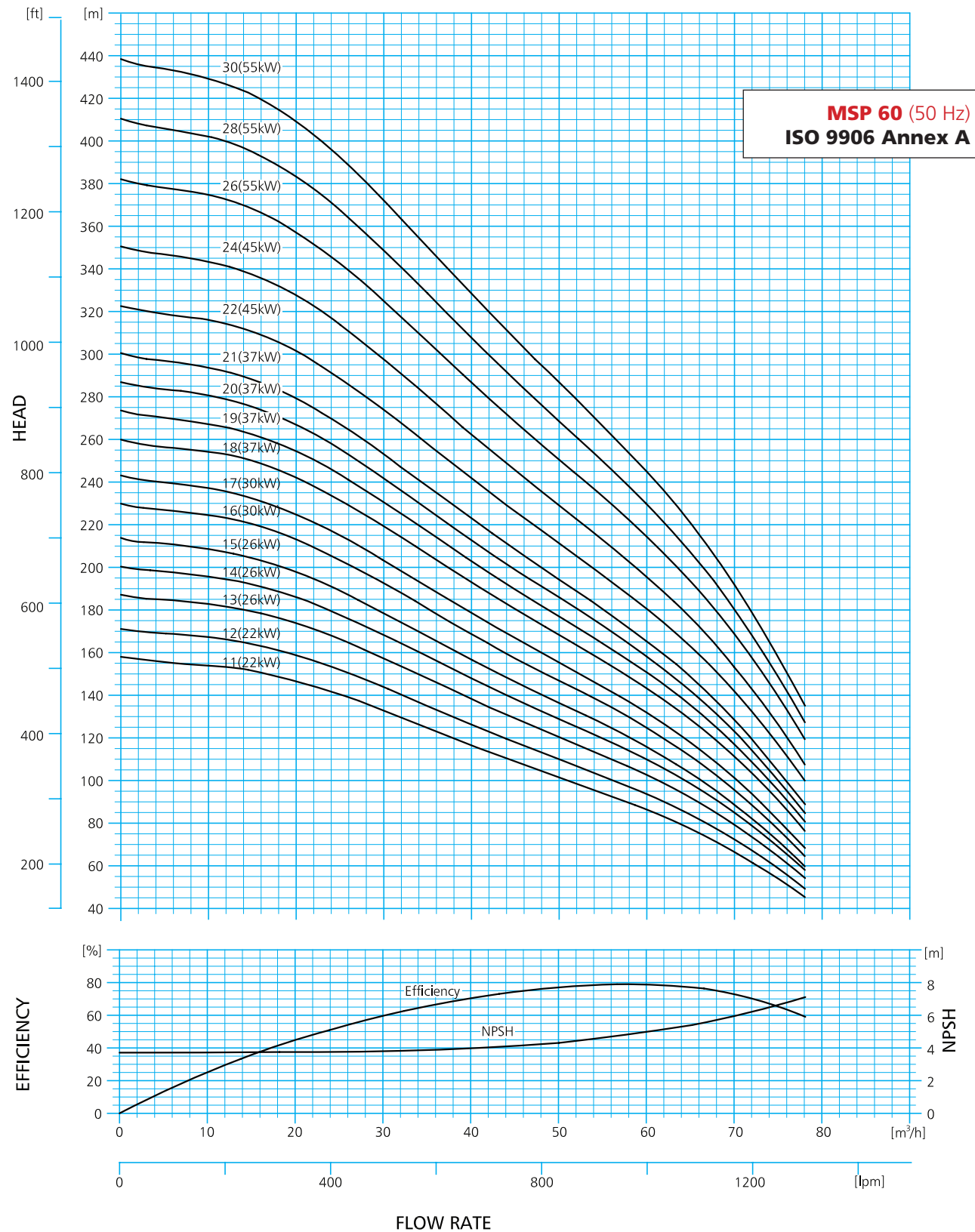




MASCOT
Pump Limited
An ISO Certified Company



MSP-60	M3/h	0	10	20	30	40	50	60	70	78	
	l/min.	0	166.7	333.3	500	666.7	833.3	1000	1166.7	1300	
Model	Motor Rating		Total Head In (m)								
	[kW]	[HP]	12	11	10	8	6	5	4	1	0
MSP60-1-A	1.5	2	12	11	10	8	6	5	4	1	0
MSP60-1	2.2	3	14	14	13	12	11	10	8	6	5
MSP60-2-B	3	4	22	22	21	18	15	13	10	6	1
MSP60-2	4	5.5	28	27	26	23	19	17	14	10	5
MSP60-3	5.5	7.5	42	41	39	35	30	26	22	16	10
MSP60-4	7.5	10	56	55	52	47	41	35	30	22	14
MSP60-5	9.3	12.5	71	69	66	59	51	44	38	28	18
MSP60-6	11	15	85	83	79	71	62	54	45	34	22
MSP60-7	13	17.5	99	97	92	83	73	63	53	40	26
MSP60-8-B	13	17.5	108	105	100	90	79	68	57	42	26
MSP60-8	15	20	114	112	106	96	84	73	61	47	31
MSP60-9-B	15	20	122	119	113	102	90	78	65	48	30
MSP60-9	18.5	25	129	127	121	109	95	83	71	54	37
MSP-60-10	18.5	25	143	140	133	120	105	92	78	60	41



MSP-60	M3 /h	0	10	20	30	40	50	60	70	78	
	l/min.	0	166.7	333.3	500	666.7	833.3	1000	1166.7	1300	
Model	Motor Rating		Total Head In (m)								
	[kW]	[HP]									
MSP60-11	22	30	158	154	147	133	116	101	86	67	45
MSP60-12	22	30	171	167	159	144	126	110	94	72	50
MSP60-13	26	35	187	183	174	157	138	120	103	79	54
MSP60-14	26	35	200	196	186	168	148	129	110	85	58
MSP60-15	26	35	214	209	198	179	157	136	116	89	60
MSP60-16	30	40	230	224	213	192	169	147	125	96	65
MSP60-17	30	40	243	237	225	203	179	155	132	101	69
MSP60-18	37	50	260	254	242	219	193	168	143	111	77
MSP60-19	37	50	274	268	255	231	203	177	151	117	81
MSP60-20	37	50	287	281	267	242	213	186	158	123	85
MSP60-21	37	50	301	294	279	253	223	194	166	129	89
MSP60-22	45	60	323	316	302	274	242	211	181	142	100



MASCOT
Pump Limited
An ISO Certified Company

