

LT-200

Laser Therapy

- ✓ Accelerate Wound Healing
- ✓ Skin Rejuvenation
- ✓ Pain Relief
- ✓ Prevent Hair Loss
- ✓ Anti-inflammatory effect
- ✓ Improve blood circulation
- ✓ Lipolysis

- LLLT promotes healing in many conditions because it penetrates the skin, increases the ATP and activates enzymes in the targeted cells.
- Growth factor response within the cells and tissue as a result of increased ATP and protein synthesis.
- Improved cell proliferation
- Pain relief as a result of increased endorphin release.
- Strengthening the immune system response via increasing levels of lymphocyte activity.



Simple & Optimized functions

Angle: 20° ~ 60° (per 5°)

Speed : Step1~Step3

Time: 1min ~ 20min (per1min)

Laser Therapy / LT-200

Laser radiation and monochromatic light may alter cell and tissue function. Laboratory studies suggest that irradiation stimulates collagen production, alters DNA synthesis, and improve function of damaged neurological tissue.

- ☑ Intense Light
- ☑ Produce Enough Energy
- ☑ Coherent

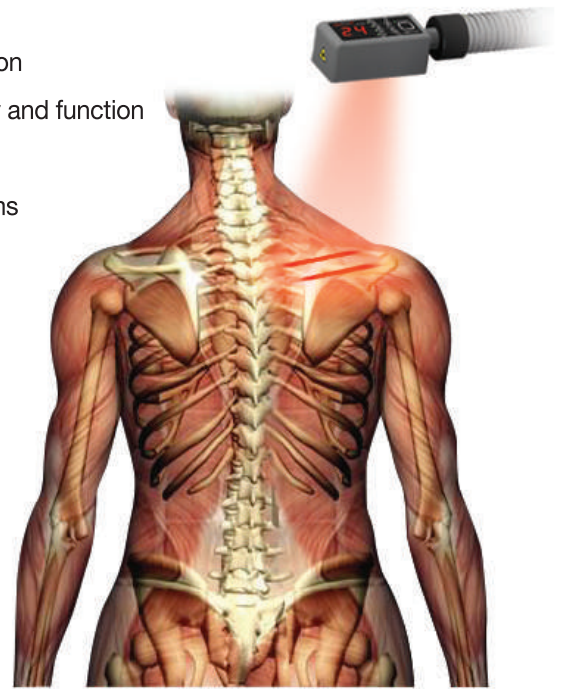
Many laser machines are using LED for electronic equipment. LED is non-coherent. And they produce very little energy.

- ☑ Monochromatic light



Pain Relief

- ☑ Reduced spasm
- ☑ Increased circulation
- ☑ Improved flexibility and function
- ☑ Improved healing
- ☑ Reduced symptoms associated with osteoarthritis



Face



Accelerate Skin Regeneration after Fractional Laser, peeling, M.T.S ETC Skin Rejuvenation (Improve elasticity and wrinkle removal), Anti-Pigmentation, Anti-Aging, Accelerating, Wound Healing

Producing Collagen, Improving Elasticity, Stimulating protein synthesis, improving cell respiration which leads to reduced wrinkles and decreased healing time. Skin recovers and looks younger, plumper, and healthier. With the effect of CELL Reproduction, Skin can be rejuvenated

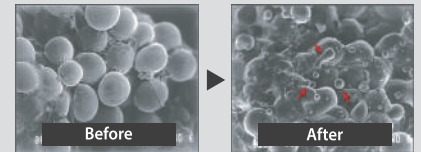
Hair



Stimulate Hair Growth, Prevent Hair Loss

Laser energy increase the blood flow and take away harmful waste material like DHT. Increase ATP creating an enhanced environment in hair follicle.

Body



Influence of laser for lipocyte * HPL

Low Level Laser is able to reach deep adipose tissue layer and then mobilize cholesterol from the cell membrane.

Specification

Main Power	Adaptor: AC100~240V, 50~60Hz / DC 12V,1000mA		
Adaptor	AC100~240V, 50~60Hz / DC 12V,1000mA		
Power Consumption	2.9 VA		
Main Unit	Laser Type	Semi-Conductor Laser	
	Laser Class	Class 3R	
	Laser Power	90mW X 2	
	Wave Length	650nm ± 10%	
	Laser Output Type	Continuous or Pulsed type	
	Setting Parameters	Angle: 20° ~ 60° (per 5°) / Speed : Step1~Step3 Time: 1min ~ 20min (per1min)	
	Frequency	0~32 Hz ± 10%	
	Size	1800 X615 X 615mm	Weight