



BUSINESS PRESENTATION

by

ENERGY TOTAL GROUP

(An ISO 9001:2008 Certified Company)





WHO WE ARE :-

- ▶ **ENERGY TOTAL** Group is a Consortium of like-minded EPC Companies lead by Energy Total and managed by a team of highly repute and proven professionals from the industry, having extensive experience & expertise in their respective areas. The company has access to some best experts available in India as well as abroad.
- ▶ **ENERGY TOTAL** Group provides Services and Solutions in India and abroad for Management Operations, Project Management, Basic & Detailed Engineering, EPC Client's PMC, Procurement, Construction, Construction Management and Supervision, Manpower Services (Ready to Use)



CONSORTIUM PARTNERS :-

- ▶ Jiangxi Construction and Engineering Corporation Limited (Wah-Kong)-
<http://www.cjic.cn/>
- ▶ Green Leaf Engineering Limited – <http://gel-world.com/>
<http://www.soloriensprojects.com/>
- ▶ Aether Engineering Solutions Pvt. Ltd. – website under construction
- ▶ Asha Consultancy Services - <http://www.acsbaroda.com/>
- ▶ Verita Energy Innovators Pvt. Ltd. - <http://www.veritalimited.com/>
- ▶ Energy Total – <http://energytotalgroup.com/>

SOFTWARE USED BY US :-

- ▶ SMART PLANT 3D
- ▶ AUTO PLANT
- ▶ PDS
- ▶ PDMS
- ▶ SPP&ID
- ▶ SPR
- ▶ NAVISWORK
- ▶ PV ELITE
- ▶ ETAP
- ▶ AutoCAD
- ▶ AUTOPIPE
- ▶ PIPE PHASE



SOFTWARES USED BY US :-

- ▶ MICROSTATION
- ▶ HTRI
- ▶ CAESER II
- ▶ CADPIPE
- ▶ INTOOLS
- ▶ INSTRUCAL
- ▶ STAAD PRO
- ▶ SACS
- ▶ TEKLA
- ▶ X- STEEL
- ▶ HYSIS
- ▶ PRO II
- ▶ PRIMAVERA P6



LITERATURE :-

- ▶ ASME
- ▶ API
- ▶ IS
- ▶ DIN
- ▶ BS
- ▶ AWWA
- ▶ TEMA
- ▶ API 650 (Vertical Storage Tank)
- ▶ API 620 (Vertical Cryogenic Storage Tank)
- ▶ API 560 (Fired Heater)
- ▶ PIP (Process Industries Practices)





NATURE OF SERVICES :-

- ▶ Preparation of Basic Design & Detailed Engineering Calculations and Drawings for Process, Piping, Mechanical, Civil, Structural, Electrical, Instrumentation & Telecom, Cross-Country Pipeline for On-shore and Off-shore etc..
- ▶ All types of Design Calculations, Stress Analyses and FEA (Finite Element Analyses) for piping, civil- structural, chemical plant equipment, pressure vessels, heat exchanger etc.
- ▶ Fabrication Drawings with End Detailing etc..

NATURE OF SERVICES :-

- ▶ Vendor Drawing Review and Vendor Management
- ▶ Procurement Engineering Services
- ▶ PMC Services including setup of project Management office for client , Consultants and contractor / vendor etc..
- ▶ Project Controls Services

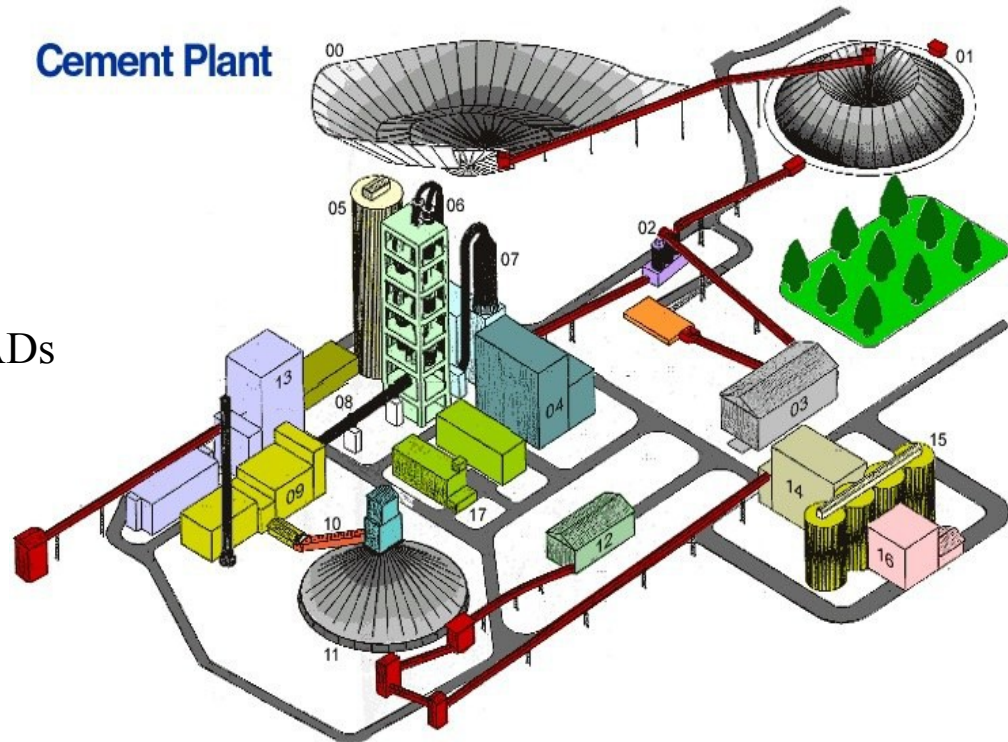


NATURE OF SERVICES :-

PREPARATION , REVIEW / INSPECTION OF

- ▶ Plant layout
- ▶ Process Flow Diagram (PFD) & P&IDs
- ▶ Plot Plan, Equipment Layout, Piping GADs
- ▶ Drawings with Support Marking
- ▶ Isometrics with Bill Of Material

as per Site / Shop



continued..

NATURE OF SERVICES :-

PREPARATION , REVIEW / INSPECTION OF

- ▶ Fabrication Drawing,
Equipment drawings
- ▶ As-Built Plant



NATURE OF SERVICES :-

TRAINING & SOLUTIONS

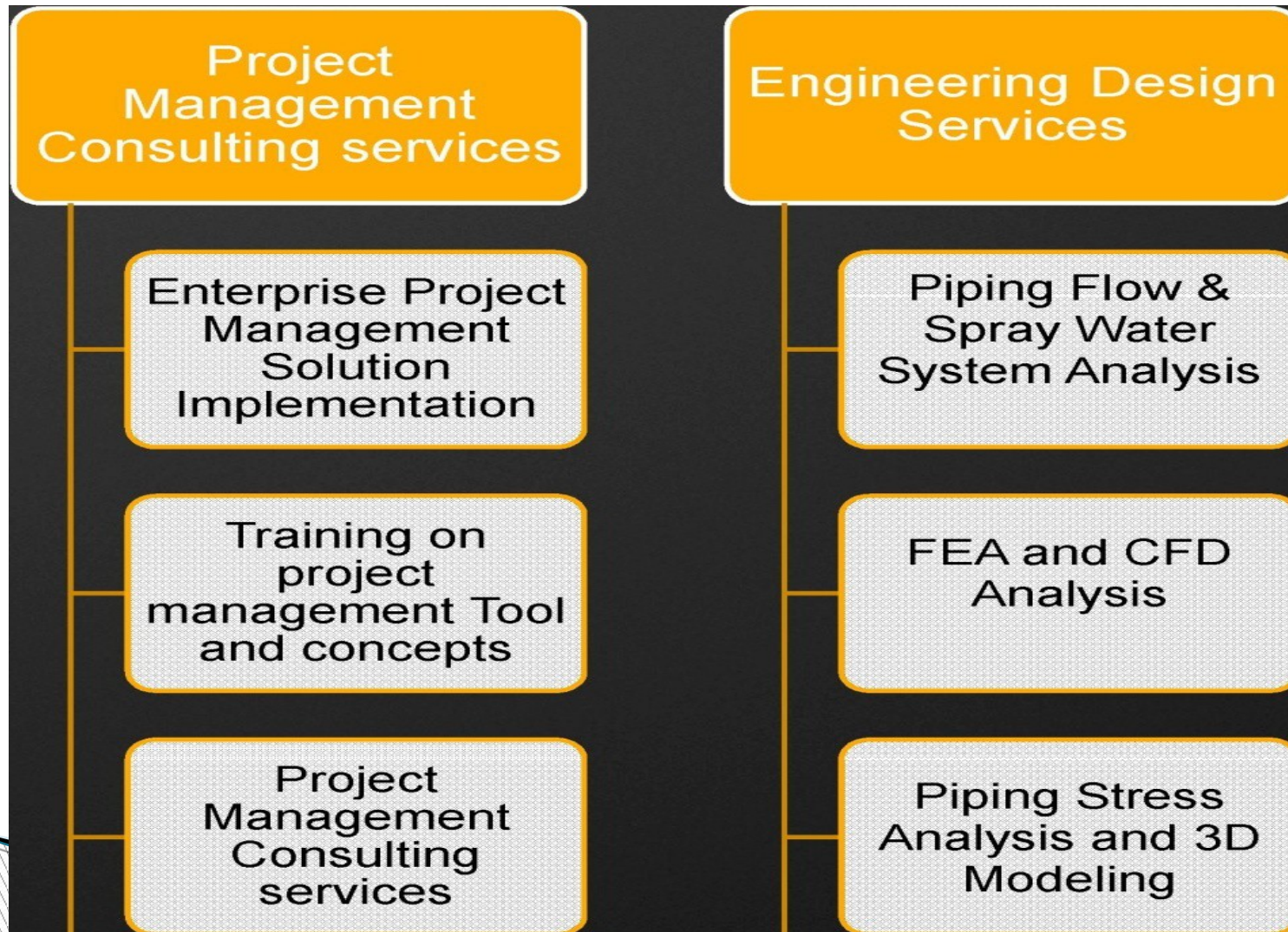
- ▶ Trained Manpower for Engineering and Management Services at Office / Plant

(India & ABROAD)

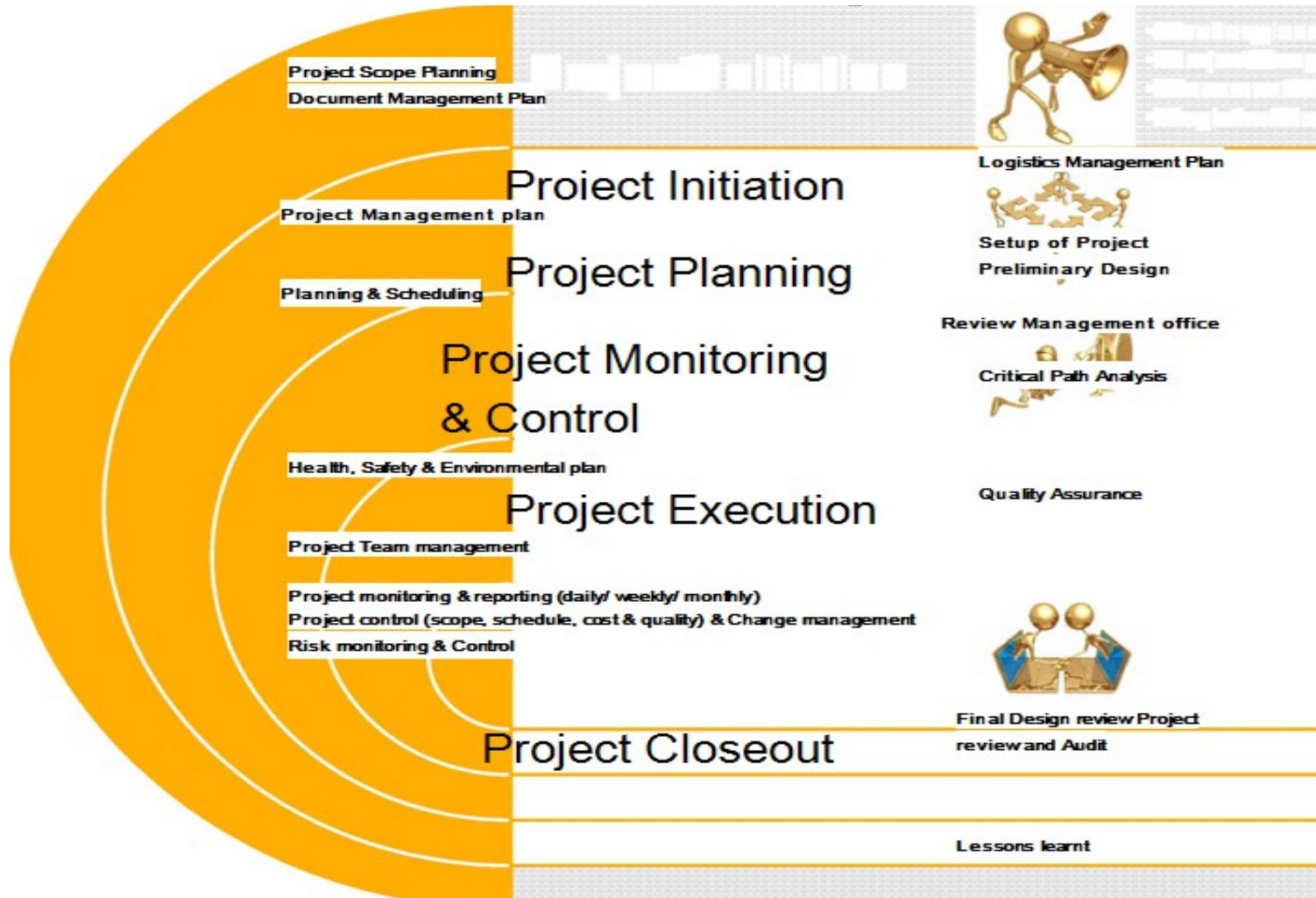
- ▶ TRAININGS and SOLUTIONS for all
Engineering disciplines and
Management operations for EPC Projects



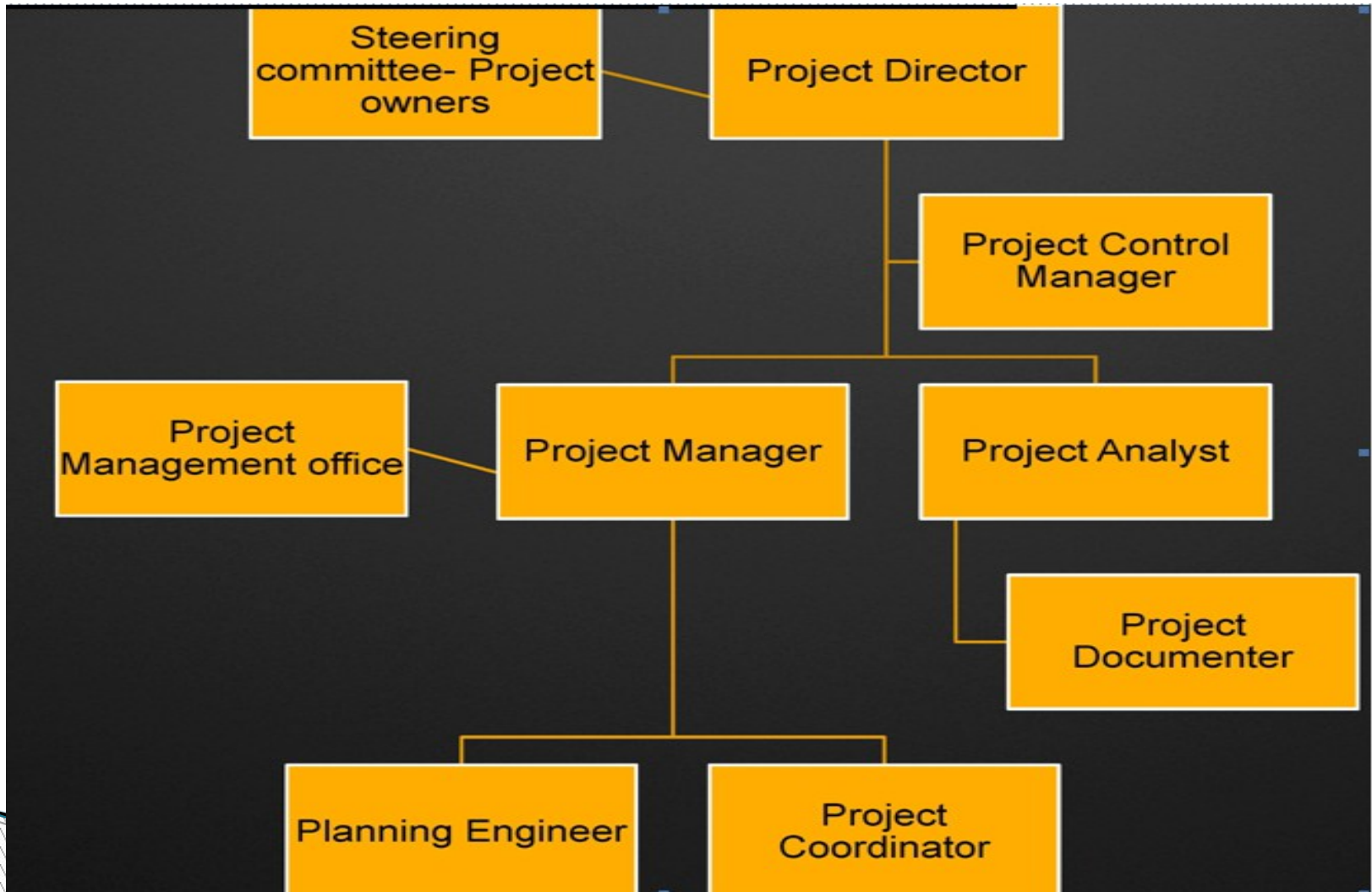
SOLUTIONS & SERVICES:-



PROJECT MANAGEMENT SERVICES



SETTING PROJECT MANAGEMENT OFFICE



PROJECT MANAGEMENT CONCEPT TRAINING

- Project Management Overview
- Project Management Process
 - Groups Training
- Project Management Best Practices
- Building a Project schedule
- Project Quality Management
- Project Risk Management
- Project Scope Management
- Project Time Management
- Project Communication Management
- Project Cost Management
- Project Integration Management



PROJECT MANAGEMENT TOOLS TRAINING

- ▶ Enterprise Project Management (EPM)
- ▶ Enterprise Project Management Administrator Training
- ▶ Primavera P6
- ▶ Primavera P3
- ▶ Primavera Contract Manager
- ▶ My Primavera



ENGINEERING CONCEPTS TRAINING WITH TOOLS APPLICATION

Piping Design Engineering Training

Piping Stress Analysis Training

Pressure Vessel Design Training

Tankage Design Trainings

Piping Flow Analysis Training

Fire Fighting Hydraulics Training

Flow Transient Training

AutoCAD/AutoCAD Mechanical Training

AutoCAD Inventor Training

Gas Network Training

3D Plant Design on ProCAD



ENGINEERING SOFTWARES TRAINING



Pipe flow analysis - PIPENET standard (Design of Pipe and Duct Networks - Cooling Water Systems, Steam Distribution Systems, HVAC Systems)

Fire Fighting system design - PIPENET Spray/Sprinkler (design of fire protection systems especially in the oil & gas and process plant industries - deluge, ring-main, sprinkler or foam concentrate systems)

Surge Analysis - PIPENET Transient (unsteady flow calculations for 'Water Hammer', 'Steam Hammer', control systems and hydraulic forces for pipe stress analysis)

Tank design- E Tank

City Gas Distribution network design - Gasworks

Autodesk - AutoCAD

Autodesk -AutoCAD Mechanical

Autodesk -AutoCAD Inventor





EXPERIENCE AND PARTIAL CLIENT LIST

Client:- M/s. RELIANCE INDUSTRIES LTD HAZIRA.

Consultant:- M/s. STONE AND WEBSTER.

Contractor:- M/s. L&T ECC LTD - BARODA.

Project:- POLYPROPYLENE PLANT.

Our Consultant:- M/s. Krish Venture. Baroda.

Status:- Completed

Job Involves:- Preparation of Small Bore **Piping** Isometrics with Bill of Materials from G.A. Drawing on AutoCAD.

Client:- M/s. O.N.G.C. - GANDHAR.

Consultant:- M/s. ENGINEERS INDIA LTD.

Contractor:- M/s. NICCO CORPORATION LTD.

Our Consultant:- M/s. Gaurav Construction. Baroda.

Status:- Completed

Job Involves:- Preparation of **Piping** Isometrics with Bill of Materials from G.A.



EXPERIENCE AND PARTIAL CLIENT LIST

Client:- M/s. TORRENT BIOTECH LTD - JAMBUSER.

Consultant:- M/s. UHDE LTD - BOMBAY.

Contractor:- M/s. NEWTON ENGG. & CONST. CO. LTD.

Project:- PENICILLIN G PLANT.

Our Consultant:- M/s. Newton Engg. And Const. Co. Ltd. Brd.

Status:- Completed

Job Involves:- Preparation of **As-Built Piping** Isometrics & Support Marking With

Client:- M/s. THE SOUTHERN PESTICIDES CORPORATION LTD. KOOVVUR, A. P.

Consultant:- M/s. PROJECT TECHNOLOGISTS PVT. LTD.

Project:- INTEGRATED PESTICIDE PROJECT (ACEPHATE, QUINALPHOS & MONOCROTOPHOS.)

Our Consultant:- M/s. Project Technologists Pvt. Ltd. Baroda.

Status:- Completed

Job Involves:- Design & Detailing of Equipment Layout, Equipment Layout Section, **Piping** General Arrangement [G.A.] with Support Mark, Tank Farm CCE Approval, Rack Layout, Bulk BOQ for Material Tack-Off, IBR System Isometric, Stress Analysis, Isometrics with BOQ, Support Specification with BOQ, Painting Specification, Insulation Specification with BOQ. Etc. on



EXPERIENCE AND PARTIAL CLIENT LIST

Client:- M/s. ASHAPURA VOLCLAY LTD. AT LER, BHUJ, (KUTCHH)

Consultant:- M/s. PROJECT TECHNOLOGISTS PVT. LTD.

Project:- BLEACHING CLAY PROJECT.

Our Consultant:- M/s. Project Technologists Pvt. Ltd. Baroda

Status:- Completed

Job Involves:- Design & Detailing of Equipment Layout for factory Approval, Equipment Layout Section, **Piping** General Arrangement [G.A.] with Support Mark, Tank Farm CCE Approval, Rack Layout, Bulk BOQ for Material Tack-Off, IBR System Isometric, Stress Analysis, Isometrics With BOQ., Support Specification with BOQ, Painting Specification, Insulation Specification with BOQ. Etc. on Computer / Desktop.

Client:- M/s. POLYCHEM LTD - RANOLI

Consultant:- M/s. POLYCHEM LTD - RANOLI

Status :- Completed

Job Involves :- A) Design & Detailing of **Civil Structure** Scope Drawing for Beam, Bracing & Column. Etc. for Vessels. (Revamp Plant)

B) Preparation of Shop Fabrication Drawing on the basis of above drawing on AutoCAD & supporting **structure**.



EXPERIENCE AND PARTIAL CLIENT LIST

Client:- M/s. MARDIA CHEMICALS LTD - AHD **Consultant:-** M/s. TICB LTD. - MUMBAI.

Project:- CHLORINE CAUSTIC SODA PLANT. **Our Consultant:-** M/s. Newton Engineering & Construction Co. Ltd.

Job Involves :- A) Preparation of **Civil Structure** Scope Drawing for Pipe Rack, Platform, Shed Building structure, Tower **structure**
B) Preparation of Shop Fabrication Drawing on the basic of above drawing.

Client:- M/s. I.O.C.L. - TALOJA **Consultant:-** M/s. DALAL CONSULTANTS AND ENGG. LTD. MUMBAI.

Project:- SPECIALLY LUBE & ADDITIVE COMPLEX. **Our Consultant:-** M/s. Industrial Engineering Services. Vadodara. **Status :-** Completed

Job Involves :- Preparation of **Civil-Structure** Scope Drawing for Pipe Rack, Platform, Shed Building structure, Tower **structure**.



EXPERIENCE AND PARTIAL CLIENT LIST

Project:- HIMALAYA.

Our Consultant:- M/s. Industrial Engineering Services. Vadodara. *Status :-*
Completed

Job Involves:- A) Preparation of **Civil Structure** Scope
Drawing for Pipe Rack, Platform, Shed Building structure, Tower **structure**.
B) Preparation of Shop Fabrication Drawing on the basic of above drawing.

Client:- M/s. RELIANCE PETROLEUM LTD. - JAM. *Consultant:-* M/s. BECHTEL
INDIA LIMITED - GURGAON *Project:-* REFINARY PROJECT.

Our Consultant:- M/s. Shon Software's Pvt. Ltd. Vadodara.

Status :- Completed

Job Involves:- A) Preparation of **Civil-Structure** Scope
Drawing for Pipe Rack, Platform, Ladder, Shed Building **structure**, Tower
structure. B) Preparation of Shop Fabrication Drawing on the basic of above
drawing.



EXPERIENCE AND PARTIAL CLIENT LIST

Client:- M/s. I.O.C.L. - VADODARA **Consultant:-** M/s. TOYO ENGINEERING INDIA LTD

Project:- BUTEN - I PROJECT.

Our Consultant:- M/s. Anwesh Comtech Engineering Pvt. Ltd. Vadodara.

Status :- Completed

Job Involves:- A) Design of Platform & Preparation of Column, Circular Platform **Structure** Fabrication Drawing.

B) Preparation of Shop Fabrication Drawing on the basic of above drawing

Consultant:- M/s. NILA BAUART ENGINEERING LTD. - BRD.

Status :- Completed

Job Involves:- A) Estimation of Quantity of Major Item for following sump.

1. 1000M3 Open Sump. Seahore.
2. 4000M3 Open Sump. Rajola Bypass
3. 8000M3 Open Sump & Pump. Vallbhipur
4. 8000M3 Open Sump & Pump. Budhel.



EXPERIENCE AND PARTIAL CLIENT LIST

Client:-M/s. WANTOTIK CLAY PRODUCTS AT MALAYSIA.

Consultant:-M/s ARAS ASSOCIATES - BARODA

Project:- FULLER EARTH PROJECT

Status :- Completed

& Detailing of Equipment Layout for factory approval, Equipment Layout Section, Piping General Arrangement [G.A.] with Support Mark, Tank Farm Approval, Rack Layout, Bulk BOQ for Material Tack-Off, IBR System Isometric, Stress

Client:-M/s. L&T-CHIYODA LIMITED. - BRD. **Project:**-IOCL SDU PROJECTS (ASSAM REFINERY) **Status :-** Completed

preparation of As Built Piping GAD'S & Isometrics in Micro-station.



CONTACT US

- ▶ ENERGY TOTAL group has achieved the distinction of successfully accomplishing assignments entrusted by industry majors ENERGY TOTAL group is striving to become the world's best company realizing customer satisfaction with the best quality, solutions and services.
- ▶ May kindly feel free to contact us through phone call or e-mail etc...for any requirement from our above mentioned comprehensive group / consortium profile in Project Management, Basic & Detailed Engineering, EPCO Projects, Client's PMC, Construction, Construction Management and Supervision, Technical and Management Trainings and Trained Manpower (Ready to Use)
- ▶ We request you to kindly go through our offer to enroll us as your approved list of Consultants / Sub-Contractors and give us an opportunity to work for the appropriate scope of work



CONTACT US

- ▶ We shall look forward to have pleasure of serving you to the best of our abilities.
- ▶ Your early and favorable response shall be highly solicited
- ▶ Thanking and assuring you of our best & prompt services at all times.
- ▶ -S/D-
- ▶ [CEO, Energy Total]
- ▶ Telefax / Mobile: +91- 120-6405532 / 9540118042, 9971625175,
- ▶ Email: energytotal.md@gmail.com, info@energytotalgroup.com,
- ▶ Website: <http://www.energytotalgroup.com>



THANK YOU

ENERGY TOTAL GROUP

www.energytotalgroup.com

Email:info@energytotalgroup.com