

**Mfg. of Clean Room Product,
OPERATION THEATER
Commercial & Industrial Air Purification,
Natural Ventilation Product Clean Room /
HVAC Validation**

PROTECH AIR SOLUTION

Office:

H 102, Sector – 7, Suncity, South Bopal,
Near SP Ring Road, AHMEDABAD – 380058 

Work:

B 34, Aditya Industrial Park, Chacharvadi Vasna Road,
Moraiya AHMEDABAD - 380058
Gujarat, INDIA.

E-mail :

protechair16@gmail.com, protech16@yahoo.com

Web. :

www.indiamart.com/protechairsolution

About Us

Respected Sir,

We take the pleasure of introducing ourselves as one of the best quality complete solution provider of **AIR FILTRATION technology**. We PROTECH AIR SOLUTION is established in the year 2016, We undertake the turn-key job for the AIR FILTRATION PRODUCT for DESIGN to meet the customer requirements according to the international standard. these products are widely acclaimed at Pharmaceutical, Lab, Hospital, Hotel etc.

"**PROTECH**" main concept to provide the best solution for **AIR FILTRATION** product and service for mainly **OPERATION THEATER/ CLEAN ROOM / COMFORT AIR / PROCESSING AIR TREATMENT** while contributing to something essential to everyone – **CLEAN AIR**.

"**PROTECH**" are Manufacturing as one of Top Quality Clean Air Equipment. These include AHU, , Laminar Flow benches, RLAF, Pass Box etc.

CLEAN AIR benefits human health and well-being safety production and operating reliability. As the leader in **AIR FILTRATION TECHNOLOGY** we realize this concept by: -

- ✓ providing the best air filtration products, systems and solutions to protect people, processes and the environment in local, regional and global markets.
- ✓ Providing the best customer support and service in the industry, including leading edge knowledge for any air filtration application.

We are sure you will appreciate our products and we look forward to more opportunities and long term association with your esteemed organization.

Please contact to the undersigned for any further assistance.

Regards,

Protech Air Solution

Ahmedabad.

Mob. +91 9825634508

INDEX

CLEAN ROOM PRODUCT DIVISION

1. AIR HANDLING UNIT
2. CLEAN ROOM SYSTEM FLOW DIAGRAM
3. LAMINAR AIR FLOW BENCH (VERTICAL / HORIZONTAL)
4. VERTICAL DOWN FLOW LAMINAR AIR FLOW BENCH
5. STATIC PASS BOX
6. DYNAMICS PASS BOX
7. AIR SHOWER UNIT
8. NON-METTALIC FUME HOOD
9. FAN FILTER UNIT (FFU)
10. SAMPLING / DISPENSING BOOTH
11. CLASS-100 TROLLEY
12. STERILE GARMENT STORAGE CABINET
13. BIO SAFETY CABINET
14. AIR PURIFICATION UNIT

FILTER DIVISION

VANTILATION & OTHER PRODUCT

PR~~TECH~~TECH

AIR SOLUTION
CLEAN ROOM

E-mail : protechair16@gmail.com, Mobile # +91 9825634508



“PROTECH” AIR HANDLING UNIT / HVAC UNIT / FDV UNIT

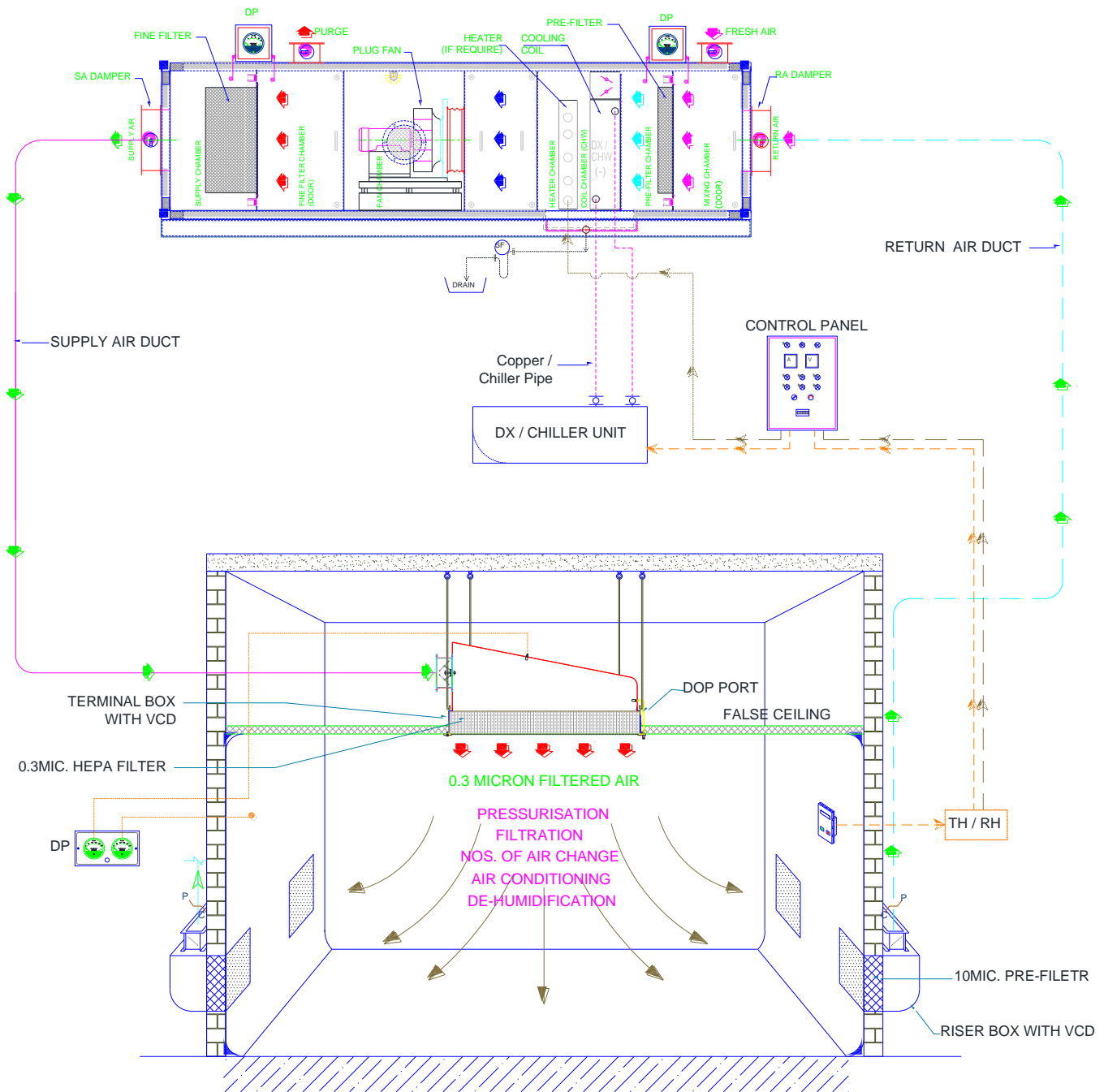


Selection Parameter : -

- Type : Floor Mount / Wall Mount / Horizontal / Vertical
- Design : Blow Through / Draw Through
- Frame work : thermal break / non thermal break
- Panel MOC :double skinned / singled skinned base
- Frame : GI skid with corner / 'c' channel
- Outer sheet : pre-coated with PC / powder coated inner
- Sheet : plain GI / pre coated / ss
- Panel thick : 25mm / 45mm
- Insulation : injected PUF @ 40±5 Kg/m³
- Static Pressure : 50mm to 200mm WG
- Types of Drive : Belt Driven / Plug Fan
- Types of Fan : Backward Curved / Forward Curved
- Filtration Stage Pre-Filter / Fine Filter / Bag Filter / HEPA Filter
- Filter Condition Differential Pressure Port
- Nos. of Damper SA / RA / FA / PA
- Type of Damper Aerofoil / GI Powder Coated
- Types of Zone
 - Inlet Lower with bird Screen
 - Return Air Plenum with RA / FA Damper
 - Pre-Filter Section / Bag Filter Section
 - HW / Heater Section
 - CHW / DX Coil Section
 - Mist Eliminator
 - Fan Section
 - Fine Filter Section
 - Super Flow Hepa Filter Section

“PROTECH” CLEAN ROOM SYSTEM FLOW DIAGRAM:

"PROTECH" has vast expertise in the designing of the HVAC systems for various Cleanroom applications. We guarantee that our designed and installed systems meet the required Clean Room classification as well as the current international GMP standards - including those of EU and USA. The central devices used are of the highest quality with low running costs and have low maintenance requirements. Energy conservation is always an important part of our design. The AHUs used are specially made for the intended application and are very robust in construction giving our clients reliable operation throughout the project life.



“PROTECH” LAMINAR AIR FLOW BENCH (VERTICAL / HORIZONTAL)

A unique combination of the most aerodynamic design with the highest product protection, operator comfort, versatility, delivered with a strong table top made of stainless steel or melamine as a standard choice.

Technical Specification :

- ✓ Air cleanliness : ISO class 5 / class 100 / M 3.5 AREA
 - ✓ Air velocities : 0.45 ± 0.05 mps (90 ± 20 FPM)
 - ✓ Air flow : horizontal / vertical
 - ✓ Noise level : less than 67 db
 - ✓ Vibration level : minimum
 - ✓ Power supply : 230V AC ,1-Ø, 50Hz
- MOC : GI powder coated / SS 304 /SS-316 side panel with glass / polycarbonate / acrylic two stage filtration
 - EU5 – intermediate filter (95% down to 5 micron)
 - EU14 – Hepa filter – supply exhaust (99.999% down to 0.3 micron)
 - Statically & dynamically balanced motor – blower with isolate to reduce noise level
 - Fluorescent lights with milky white diffuser
 - Differential pressure gauge: 01 no. (hepa filter) on/off switches (BL/FL/UV)
 - Auxiliary powder socket : 5/15 amp for external equipment DOP port
 - DQ,IQ,OQ,PQ Documentation



Optional and accessories :

- A wide range of configurations to suit any containment application
- Front door (counter weighted / hinged) hour meter for UV air / gas cock
- Velocity display with high / low alarms filter chocking alarms
- Velocity display with High / Low Alarms
- Filter chocking alarms

Model	HEPA Area	Working Area	Over All Dimension
Horizontal Flow		W x D x H	W x D x H
LFB-22	610 x 610	610 x 610 x 610	710 x 1060 x 1450
LFB -32	915 x 610	915 x 610 x 610	1015 x 1060 x 1450
LFB -42	1220 x 610	1220 x 610 x 610	1330 x 1060 x 1450
Vertical Flow			
LFB-22	610 x 610	610 x 610 x 610	710 x 710 x 1980
LFB -32	915 x 610	915 x 610 x 610	1015 x 710 x 1980
LFB -42	1220 x 610	1220 x 610 x 610	1330 x 710 x 1980

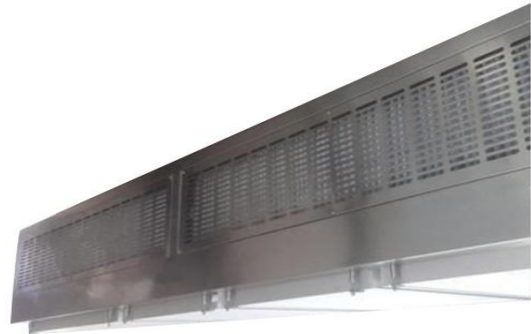
Other capacity : on request

“PROTECH” VERTICAL DOWN FLOW LAMINAR AIR FLOW WORK STATION

For the protection for sterile / filling machine in the pharmaceutical industries used where bacteria and particle can have a destructive effect on the final product. The unit is supplied either to be mounted in the ceiling 4 adjustable chains or with legs: which optionally can be supplied with wheels.

Technical Specification :

- ✓ Air cleanliness : ISO class 5 / class 100 / M
3.5 AREA
- ✓ Air velocities : 0.45± 0.05mps (90 ± 20 FPM)
- ✓ Air flow : horizontal / vertical
- ✓ Noise level : less than 65db
- ✓ Vibration level : minimum
- ✓ POWER SUPPLY : 230V AC ,1Ø,50HZ
- MOC : GI powder coated / SS-304 / SS-316
- two stage filtration
- EU5 pre-filter (95 % down to 5 micron)
- Eu14 – Hepa filter – supply / exhaust (99.999% down to 0.3 micron)
- Statically & dynamically balanced motor - blower with isolator to reduce noise level
- differential pressure gauges: 01 no.(Hepa filter)
- On/off switches
- Dop port
- DQ, IQ, OQ, PQ documentation



Optional and accessories

A wide range of configurations to suit any containment application:

- Rigid barrier (flexible PVC strip / poly carbonate / acrylic sheet)
- velocity display with high / low alarms
- Filter chocking alarms
- Fluorescent lights
- Auxiliary powder socket : 5/15 amp for external equipment
- FLP electrical goods for explosion.

Model	Hepa area	Over all dimension (blower on top side) WXDXH option : I	Over all dimension (blower on top side) WXDXH option : II
VLF-22	610 x 610	710 x 710 x 600	710 x 1100 x 410
VLF-42	1220 x 610	1330 x 710 x 600	1330 x 1100 x 410
VLF-62	1830 x 610	1950 x 710 x 600	1950 x 1100 x 400
VLF-82	2440 x 610	2460 x 710 x 600	2460 x 1100 x 410

OTHER CAPACITY : ON REQUEST

“PROTECH” STATIC PASS BOX

Static pass boxes are self-contained units installed at the entrance to the CLEAN ROOM. They minimize the amount of particulate contamination entering the clean room by reducing operation “ traffic” equipment and materials are passed into the clean room via the pass box which is equipped with a mechanical interlock system that prevent both doors from being opened at the same time. The pass box is an inexpensive facilities.



Technical specification:

- MOC : GI Powder coated / SS-304 / SS-316
- Construction : single skinned / double skinned
- Door : swing type double door (double skinned) with view panel with SS hinges 7 'D' Handle
- Fluorescent light (interlock with door)
- UV light with house meter (interlock with door)
- internal coving for easy cleaning
- Door opening with solid state electronic inter locking mechanism
 - When both door closed ;both are elec. Magnet locked ;
 - For open press touch screen to release the door.
 - At a time only one door opened
 - Audio / visual indication for material is kept inside the pass box.
 - In case condition of both door : UV light will be on .
 - When open any door : UV will off and FL will on
- POWER SUPPLY : 230V AC ,1Ø,50HZ

OPTIONS AND ACCESSORIES

A wide range of configurations to suit any containment application :-

- Mechanical interlocking
- Once through LAF module for sterile air
- Bottom with roller base for heavy drum / material transfer
- Flush level with ground level for easy trolley transfer
- Flange for one side flush mount in clean room partition / wall FLP electrical goods for explosion area

Model	Working area WXDXH	Over all dimension WXDXH
SPB-18/18	200x250x200	305x305x305
SPB-18/18	350x400x350	460x460x460
SPB-24/24	500x550x500	610x610x610
SPB-30/30	650x710x650	760x760x760
SPB-36/36	800x865x800	915x915x915

OTHER CAPACITY : ON REQUEST

“PROTECH” DYNAMIC PASS BOX

Dynamic pass boxes are designed in conformation to the international standards and are used for transferring the material from and into the classified clean room without contaminating the air of clean room. In the process, room door is not require to open, these can be easily installed on the wall between the classified room and unclassified room.



Technical specification :

- ✓ Air cleanliness : ISO class 5 / class 10 / m 3.5
- ✓ Area A velocities : 0.45± 0.05mps (9 0 ± 20FPM)
- ✓ Air flow : horizontal / vertical
- ✓ Noise level : less than 65db
- ✓ Vibration level : minimum
- ✓ POWER SUPPLY : 230V AC, 1Ø,50HZ
- MOC : GI Powder coated / SS-304 / SS-316 / COMBINATION
- Door swing type double door (double skinned) with view panel with SS hinges & 'D' Handle
- internal coving for easy cleaning
- Two stage filtration
- EU7- intermediate filter (95% down to 0.3 micron)
- EU14- HEPA FILTER – supply / exhaust (99.999% to 0.3 micron)
- Statically & dynamically balanced motor- blower with isolator to reduce noise level
- fluorescent lights (interlocked with door)
- UV light (interlocked with door)
- Differential pressure gauge: 01 no. (HEPA FILTER)
- Door opening with solid state electronic inter locking mechanism
 - When both door closed ; both are elec. Magnet locked ;
 - For open press touch screen to release the door ,
 - At a time only one door opened ;
 - Audio / visual indication for material is kept inside the pass box
 - In close condition of both door ; UV light will be on ,
 - When open any one door : UV will off and FL will on
- DOP port
- DQ, IQ, OQ, PQ documentation.

Options and accessories

A wide range of configuration to suit any containment application :

- Bottom with heavy roller base for drum / material transfer
- flush level with ground level
- Flange for one side flush mount in clean room partition / wall
- FLP electrical goods for explosion area

Model	Working area	Over all dimension WXDXH
DPB-24/24	610x610x610	740x660x1275
DPB-30/30	760x760x760	910x810x1425
DPB-36/36	915x915x915	1065x960x1580

OTHER CAPACITY : ON REQUEST

“PROTECH” AIR SHOWER UNIT

Prefabricated modular air shower enclosure used for removing surface particle from personnel prior to entering a contamination controlled environment. Air shower are constructed as per ISO 14666.



Technical specification :

- Air cleanliness : ISO class 5 / class 100 / M 3.5 AREA
- Air velocities : 20 ± 5 mps (4000 \pm 1000 FPM)
- Air flow : horizontal / vertical
- Noise level : minimum
- Vibration level : minimum
- POWER SUPPLY :440V AC, 3-Ø,50HZ
- MOC : GI powder coated /SS -304 / SS-316 / combination
- Structure : all external panel are double skinned duly PUF insulated
- Door : double skinned with view panel, door closer & 'D' handle
- Two stage filtration
- EU7- intermediate filter (95% down to 0.3 micron)
- EU14 - hepa filter - supply / exhaust (99.999% down to 0.3 micron)
- Statically & dynamically balanced motor-blower with isolator to reduce noise level
- Fluorescent lights
- Differential pressure gauge : 01 No.(hepa filter)
- Auto / manual operation
- ON/OFF switches (BL / FL)
- DOP port
- DQ, IQ,OQ, PQ Documentation

Options and accessories

A wide range of configurations to suit any containment application:

- Once side entry / both side entry
- Top blower / side blower arrangement (height consul)
- velocity display with high / low alarms filter chocking alarms
- FLP electrical goods for explosion

Model	Nos. of person	Working area	Over all dimension WX DX H
AUS-30/36	01	760x900x2000	1360x1000x2850
AUS-36/36	01/02	900x900x2000	1500x1000x2850

OTHER CAPACITY : ON REQUEST

“PROTECH” POLYPROPYLENE FUME HOOD (NON-METALLIC FUME HOOD)

Polypropylene fume hood for protection of the personnel against toxic gasses and fumes by 100% exhaust the outside.



Technical specification

- MOC : main unit -100% polypropylene fabricated
- Work platform : black granite (15/20mm thick)
- Sash (shutter) : vertical rising of vertical opening sash monument with counter weight balance mechanism made of polycarbonate / toughened glass frame made from polypropylene counter weight balance cables made from PP Rope
- Utility : gas cock / air lock / vaccum cock
- Air flow : 100% air take from inside room through
- Statically and dynamically balanced motor-blower (MS PU coated)
- Fluorescent lights (Vpore proof)
- ON/OFF switches on front facia (BL / FL)
- Ducting : made from PP / PVC pipe / flexible duct weather proof rain cowl to be provided at the outlet of blower
- Noise level <80db at I meter from fume hood
- POWER SUPPLY : 440V AC, 3-Ø, 50HZ

Options And Accessories

A wide range of configurations to suit any containment application :

- Base cabinet with chemical storage cabinet (with air vent)
- Sink : molded polypropylene sink with drain nipple
- Auxiliary socket - 5/15 amp - as require qty.
- Velocity display with high/ low alarms
- Auxiliary powder socket : 5/15 amp for external equipment
- FLP electrical goods for explosion

Model	Working area WXDXH	Over all dimension (with base cabinet) WXDXH
EFH-32/30	915X610X760	1220X750X2475
EFH-42/30	1220X610X760	1550X750X2475
EFH-32/30	1830X610X760	2130X750X2475

“PROTECH” FAN FILTER UNIT (FFU)

Filter fan unit are key elements in clean room ventilation system."protech" supplies the element for Fan filter unit (FFU) as well as the units themselves. Startinf from standars FFU design, our team of experts implements the specification for your special project.



Technical specification

- ✓ Air cleanliness : ISO class 5 / class 100 / M 3.5 Area
- ✓ Area air velocities : 0.45±0.05 mps (90±20FPM)
- ✓ Air flow : horizontal / vertical
- ✓ Noise level : less than 65db
- ✓ Vibration level : minimum
- ✓ POWER SUPPLY : 230V AC, 1-Ø, 50HZ

Filter fan units made by PROTECH are available:-

- As standard or customized versions
- For standard and customized ceiling grids
- For different filter and grid sizes
- As top load or bottom load versions
- For various air flows and pressure drop
- With minimum vibration and audible noise emissions
- With an external rotor motor system

Benefits which count

...flexibility

As the needs or uses change in a facility, the unit can be exchanged with lay-in lighjts or blank panels. For facilities with lower classification, upgrades can be obtained by simply adding FFU's . when a computer controlled management system is installed, unit or clusters of units can be remont controlled to operational needs.

...cost effective

Use motors with the lowest power consumption available with complete controllability of each and every FFU

...salvageability

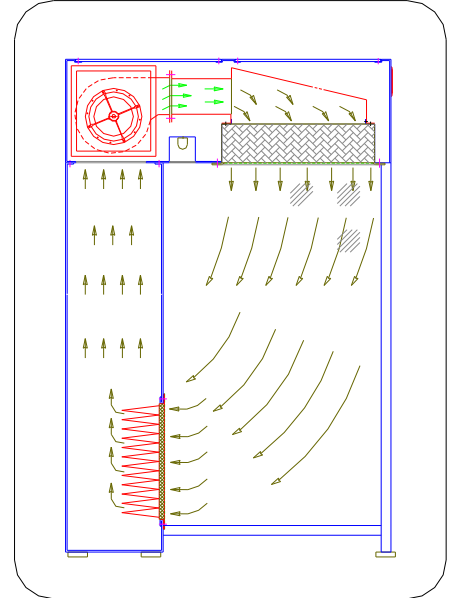
FFU's are fully salvageable as stand-alone units

Model	HEPA size	Overall dimension WXDXH
FFU-22	610X610X69	615X615X400
FFU-32	915X610X69	920X615X400
FFU-42	1220X610X69	1225X615X400
FFU-62	1830X610X69	1820X645X400

OTHER CAPACITY : ON REQUEST

“PROTECH” SAMPLING/DISPENSING BOOTH

The Unit eliminates powder contamination to protect the operator and the surrounding environment. It is designed to handle powder under aseptic conditions for optional G.M.P



Technical specification

- ✓ Air cleanliness : ISO class 5 / class 100 / M .5
- ✓ Area air velocities : 0.45±0.05 mps (90±20FPM)
- ✓ Air flow : vertical
- ✓ Noise level : less than 65db
- ✓ Vibration level : minimum
- ✓ POWER SUPPLY : 230V AC, 1-Ø, 50HZ
- MOC: GI Powder Coated/ SS-304/ SS-316
- Inside: Side panel with all three side with coving
- Three stage filtration
- EU4- Pre filter (90% down to 10micron)
- EU7-Intermediate filter (95% down to 0.3 micron)
- EU14- HEPA filter- Supply/ Exhaust (99.999% down to 0.3 micron)
- Statically & dynamically balanced motor- blower with isolator to reduce noise level
- Fluorescent lights (Vpore proof)
- Differential pressure gauge : 02 No.(Intermediate @ Hepa filter)
- ON/OFF switches on front facia (BL / FL/UV)
- Auxilliary power socket: 5/15 AMP For external equipment
- Dop Port
- DQ,IQ,OQ,PQ Documentation

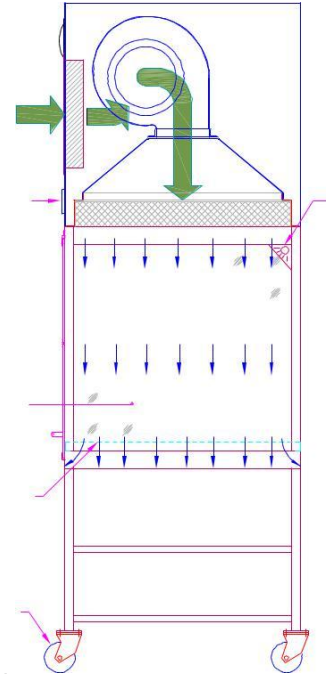
Options And Accessories

- Double skinned PUF insulated side panels with/without view window
- Stainless steel perforated grille for HEPA FILTER
- Front Flexible Strip PVC Curtain
- Velocity display with High/ Low Alarms

Model	HEPA size	Overall dimension WXDXH
RLAF-22	610X610	760 x1170 x2240
RLAF-32	915X610	1070 x1170 x 2240
RLAF-42	1220X610	1370 x 1170 x 2240
RLAF-62	1830X1220	140 x1780 x 2450

“PROTECH” MOBILE CLASS-100 TROLLEY

“PROTECH” designed for transferring sterile products under ISO Class 5 (Class 100) particle free work area. The work area is continuously supplied with positive pressure HEPA filtered re-circulated/once through horizontal/ vertical air flow



Technical specification

- ✓ Air cleanliness : ISO class 5 / class 100 / M .5
- ✓ Area air velocities : 0.45±0.05 mps (90±20FPM)
- ✓ Air flow : Horizontal/Vertical
- ✓ Noise level : less than 65db
- ✓ Vibration level : minimum
- ✓ POWER SUPPLY : 230V AC, 1-Ø, 50HZ
- MOC: GI Powder Coated/ SS-304/ SS-316/Combination
- Inside: Side panel with all three side with coving
- EU7-Intermediate filter (95% down to 0.3 micron)
- EU14- HEPA filter- Supply/ Exhaust (99.999% down to 0.3 micron)
- Statically & dynamically balanced motor- blower with isolator to reduce noise level
- Fluorescent lights (Vpore proof)
- Differential pressure gauge : 01 No.(Hepa filter)
- ON/OFF switches on front facia (BL / FL/UV)
- Auxilliary power socket: 5/15 AMP For external equipment
- Dop Port
- DQ,IQ,OQ,PQ Documentation
- Battery back-up with Inverter (for 30mic. To Three hour)
- SS castor wheel with PU coated (with locking arrangement)

Options And Accessories

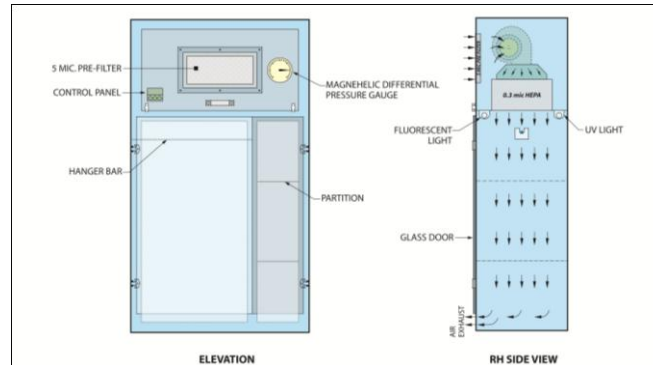
- Once through/ Re-circulating operation
- Side wall with SS/ Flexible PVC Strip/ Poly carbonate/ Acrylic sheet
- Front Flexible Strip PVC Curtain
- Velocity display with High/ Low Alarms

Model	HEPA size	Overall dimension WXDXH
BLF-22	610 x 610 x 610	760 x1170 x2240
BLF-32	610 x 915 X610	1070 x1170 x 2240
BLF-42	610 x 1220 x 610	750 x 1370 x 1950

OTHER CAPACITY : ON REQUEST

“PROTECH” STERILE GARMENT STORAGE CABINET

“PROTECH” Sterile Garment Storage Cabinet , which is used for storage of Clean apparel for clean rooms as these are equipped with HEPA filter and UV germicidal tube. There for these are safe and ensure that the garments completely free from bacterial contamination.



Technical Specifications

- _ Air cleanliness : ISO Class 5 / Class 100 / M 3.5 AREA
 - _ Air Velocities : 0.45 ± 0.05 mps (90 ± 20 FPM)
 - _ Air Flow : Horizontal / Vertical
 - _ Noise Level : Less than 65 dB
 - _ Vibration Level : Minimum
 - _ POWER SUPPLY : 230V AC, 1-Ø, 50HZ
 - _ MOC : GI Powder Coated / SS-304 / SS-316
 - _ Two Stage filtration
 - EU7 - Intermediate Filter (95% down to 3 micron)
 - EU14 - HEPA Filter - Supply / Exhaust (99.999% down to 0.3 micron)
 - _ Statically & Dynamically balanced Motor-blower with isolator to reduce noise level
 - _ Fluorescent Lights
 - _ UV Light with house meter (interlocked with Door)
- When Door will be Open, UV OFF; Door in Close, UV will ON
- _ Differential Pressure Gauges : 01 No. (HEPA Filter)
 - _ ON/OFF Switches (BL / FL)
 - _ DOP Port
 - _ DQ, IQ, OQ, PQ Documentation

Options and Accessories

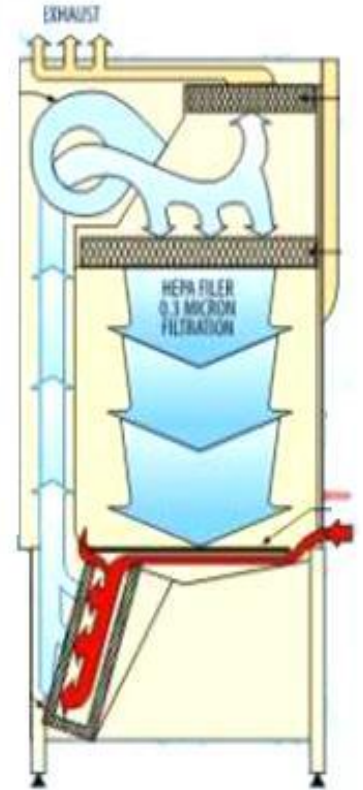
A wide range of configurations to suit any containment application: -

- _ Rigid Barrier (Flexible PVC Strip / Poly carbonate / Acrylic Sheet)
- _ Velocity display with High / Low Alarms
- _ Filter chocking alarms

Model	Working Area w x d x h	Overall dimension WXDXH
PGSC-35	900 x 450 x 1220	915 x 460 x 1680 (Wall Mount)
PGSC-36	900 x 450 x 1830	915 x 460 x 2400 (Floor Mount)

“PROTECH” BIO SAFETY CABINET

“PROTECH” Biohazards Cabinet, which is meet the laboratories requirements for life science research, clinical or industrial applications. These are manufactured using stainless steel for easy cleaning and maintenance and excellent powder coating finish helps to prevent microbial or bacterial growth.



Technical Specifications

- _ Air cleanliness : ISO Class 5 / Class 100 / M 3.5 AREA
- _ Air Velocities : 0.45 ± 0.05 mps (90 ± 20 FPM)
- _ Air Flow : Vertical
- _ Noise Level : Minimum
- _ Vibration Level : Minimum
- _ POWER SUPPLY : 240V AC, 1-Ø, 50HZ
- _ MOC : GI Powder Coated / SS-304 / SS-316 / Combination
- _ Sliding type SS Work Top
- _ Sash (Shutter) : Vertical rising of vertical opening
- Sash monument with counter weight balance mechanism , Made of polycarbonate / toughened glass
- _ Two Stage filtration
 - EU7 - Intermediate Filter (95% down to 3 micron)
 - EU14 - HEPA Filter - Supply / Exhaust (99.999% down to 0.3 micron)
- _ Statically & Dynamically balanced Motor-blower with isolator to reduce noise level
- _ Fluorescent Lights with milky diffuser
- _ Differential Pressure Gauges : 02 Nos. (HEPA & Pre-Filter)
- _ ON/OFF Switches (BL / FL)
- _ DOP Port
- _ DQ, IQ, OQ, PQ Documentation

Options and Accessories

A wide range of configurations to suit any containment application: -

- _ Once through System (100% Exhaust)
- _ Pass Box for arrangement material transfer
- _ Gloves arrangement for isolator design
- _ Velocity display with High / Low Alarms
- _ Filter chocking alarms

Model	Working Area w x d x h	Overall dimension WXDXH
PBSC-22	610 x 610 x 610	760 x 850 x 1980
PBSC-32	915 x 610 x 610	1070 x 850 x 1980
PBSC-42	1220 x 610 x 610	1370 x 850 x 1980

“PROTECH” AIR PURIFICATION UNIT

“PROTECH” Air Purification System :~(TOWER TYPE / NON TOWER TYPE)

Technical Specifications

- _ Air cleanliness : ISO Class 5 / Class 100 / M 3.5 AREA
- _ Air Velocities : 0.45 ± 0.05 mps (90 ± 20 FPM)
- _ Air Flow : Horizontal (Three side / Four Side)
- _ Noise Level : Minimum
- _ Vibration Level : Minimum
- _ POWER SUPPLY : 240V AC, 1-Ø, 50HZ
- _ MOC : MS Powder Coated
- _ Four Stage filtration
 - EU14 HEPA Filter - (99.999% down to 0.3 micron)
 - EU9 - Micro-V Filter - (99% down to 3 micron)

Activated Carbon Filter:- Activated Carbon media with both side laminated stiched with alu. mesh & enclosed in aluminum frame with epoxy sealing (Disposable Type)
EU4 Pre Filter - (90% down to 10 micron)

- _ Statically & Dynamically balanced Motor-blower with isolator to reduce noise level
- _ Whole unit mounted on Castor Wheel
- _ Differential Pressure Gauges : 02 Nos. (HEPA & Pre-Filter)
- _ ON/OFF Switches (BL / FL)
- _ DQ, IQ, OQ, PQ Documentation

- Electrical : 1. On/ Off Switch with Inbuild Light provided for BL / UV
2. **UV Light Provided** - 8 / 15 Watt - 01 No. (Inside Unit)
3. Pre-Wired Unit with external 3mt wire with 5/15 Amp. 3-Pin Top
4. HEPA Filter Chock Condition Indicator

Power supply : 230 V, 50Hz, Single Phase

Model	HEPA Size W x d x h	Overall dimension WXDXH	Air Flow Capacity
PAPU-22	305 x 305	455 x 455 x 600	125 CFM
PAPU-32	450 x 450	600 x 600 x 750	280 CFM
PAPU-42	610 x 610	765 x 765 x 850	500 CFM
PAPU-52	610 X 610	765 x 765 x 1200	1000 CFM

AIR FILTER



DISPOSABLE PANEL FILTER

- Entirely disposable
- Low initial pressure drop
- Inexpensive
- Media: Synthetic Fiber
- EN 779:2002 efficiency: G2 /G4
- Eurovent efficiency: EU2 / EU4



PANEL FILTER

- Robust Construction
- High dust holding capacity
- Excellent arrestance
- Suitable for Commercial & Industrial Application
- Low initial pressure drop
- Media: Pleated Synthetic Fiber
- EN 779:2002 efficiency: G2 /G4
- Eurovent efficiency: EU2 / EU4



FINE FILTER

- Robust Construction
- High dust holding capacity
- Excellent arrestance
- Suitable for Commercial & Industrial Application
- Low initial pressure drop
- Media: Pleated Synthetic Fiber
- EN 779:2002 efficiency: F5 /F9
- Eurovent efficiency: EU5 / EU9



HEPA FILTER (FOIL SEPERATOR)

- Robust construction
- Low Initial Pressure drop
- Separator: Corrugated Aluminum
- High dust holding capacity
- Wide range of Standard size
- Individually leak tested
- Media: Fiber Glass
- EN 1822 efficiency: H12,H13,H14



MINI PLEATED HEPA FILTER

- Low initial pressure drop
- Resilient
- Separator: Hot-melt beads.
- High dust holding capacity
- Wide range of Standard size
- Individually leak tested
- Media: Fiber Glass
- EN 1822 efficiency: H12,H13,H14



BAG FILTER (SYNTHETIC MEDIA)

- High air flow rate
- Low initial pressure drop
- Sturdy construction
- Extended media surface
- Very High dust holding capacity
- Media: Progressive structure synthetic fiber. / Glass Fibre
- EN 779:2002 efficiency: F5 / F9
- Eurovent efficiency: EU5 / EU9



BAG FILTER (POLYESTER MEDIA)

- High air flow rate
- Low initial pressure drop
- Sturdy construction
- Extended media surface
- Very High dust holding capacity
- Media: Progressive structure Polyester media
- EN 779:2002 efficiency: F5 / F9
- Eurovent efficiency: EU5 / EU9



ACTIVATED CARBON FILTER

- Application: Low concentration gas-phase filtration
- Type: Pleated panel filter
- Media: Self Supporting Activated carbon textile media
- Grids Laminated Galvanized metal mesh
- Gasket: None



CARTRIDGE FILTER

- Great Filter Surface on Small Space
- Excellent Quality
- Best Ratio Prince to Filter Area
- High Safety in Operation



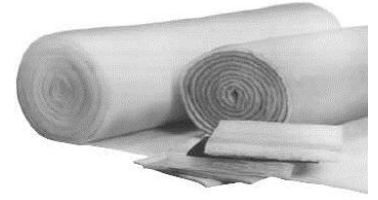
SPRAY PLEAT PACK FILTER

- Lower Shipping & Storage Cost
- Retention Capacity : 15 Kg/M2
- Standard Dimension Length : 10 Mtr.
- Width : 0.75m., 0.90m, 1.0 m.



GLASS FIBER MEDIA ROLL

- High Dust Holding Capacity
- Very Low Pressure Drop
- Available in Rolls / Cut to Size Or Framed Filter
- Standard Dimension
- 50mm / 70mm / 100mm thick
- Roll Length : 20 mtr.



AIR INTEK FILTER MEDIA

- High Dust Holding Capacity
- Very Low Pressure Drop
- Available Grade G2 / G3 / G4
- Standard Dimension
- Roll Length : Cut to Size

VENTILATION PRODUCT



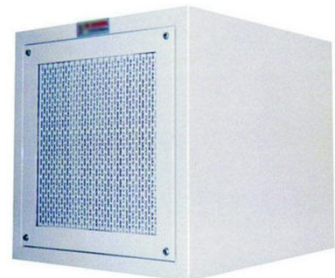
AIR CURTAIN



AXIAL FLOW FAN



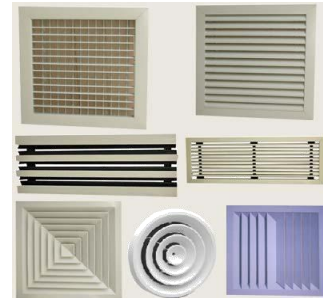
DIFFERENTIAL PRESSURE GAUGE



POSITIVE PRESSURE MODULE



CENTRIFUGAL BLOWER (MS + FRP)



DIFFUSER GRILL / VCD / DAMPER

