



# Venus Products™

**MFG. & EXPORTER OF AYURVEDIC PROPRIETARY MEDICINES**

**A GMP Certified Company**

**REG. OFF :- G.I.D.C. PHASE II PLOT NO. 417, JUNAGADH (GUJARAT) 362001.**

**MOBILE :- (O) 9898554343 / (O) 9662016616**

**TEL. NO. :- +91 285-2661666**

**WEBSITE :- [www.venusherbalproducts.com](http://www.venusherbalproducts.com)**

**EMAIL :- [info@venusherbalproducts.com](mailto:info@venusherbalproducts.com)**

## **About Us**

We **Venus Products**, have forayed into **Pharmaceutical Industry** with a noble vision of serving mankind with highly effective **herbal ayurvedic medicines**. As an eminent **Manufacturer, Exporter and Supplier of Ayurvedic Herbal Products**, we struve to put lives of human race on the healthy track. The products such as **Herbal Hair Growth Products, Arthritis Oil & Capsule, Cough Syrup, Urinary Stone Syrup, Liver Tonic, Family Health Tonic and Capsule, Gastritis Syrup & Capsule and Piles Capsule** and many more products are formulated with accurate composition of respective ingredients. Moreover, the aforementioned medicine goes through stringent quality testing, which determines their productive worth in terms of effectiveness, purity and safety. Most importantly, the organization put strong efforts in research and development, and keeps on updating the product range based on the guidelines of prevailling market trends.

Established in the year, 1987, e have been continuing the hard work, and facing all the market challenges with result bound solutions. We adhere to updated work methodologies and accomplish each assigned project with strategic planning and holistic approaches. Ther is a team of experienced scientific expert, who works along-with quality analyst and other support staffs, carrying the respective business responsibilities with ulmost perfection. Apart from this, the company always stays connected to clients and make sure to serve them in an ethical, transparent and cost-effective way. We always belive in Quality.



# ALL PRODUCT DETAILS

## KESAVIN HAIR OIL



### COMPOSITION : (EACH 10 ML CONTAINS)

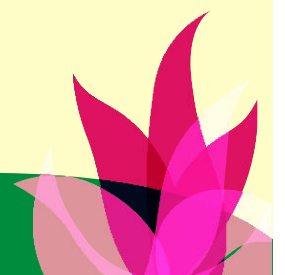
BHRUNGRAJ	150 MG
BRAHMI	150 MG
RASVANTI	100 MG
VAJ	100 MG
SANKH PUSHPI	150 MG
AMLA	150 MG
INDRAVARUNI	100 MG
ROHIS	50 MG
NAGARMOTH	50 MG
USHIR	25 MG
SHYAM LATA	75 MG
BHORINGANI	100 MG
KAKMACHI	100 MG
NAGOD	50 MG
KAPOOR	100 MG
JATAMANSI	100 MG
COLOURED GREEN & PERFUMED	Q.S
TAL TEL TO MAKE	100%

**INDICATION :** GENERAL HAIR TONIC FOR BLACK LENGTHY AND HEALTHY HAIR. ITS CONTROLS HAIR FALL WITHIN 15 DAYS.

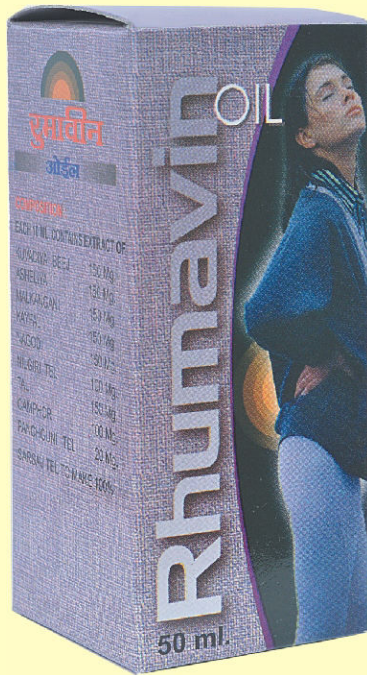
**PRESENTATION :** OIL

**PACKING :** 1 x 100 ML

**APPLICATION :** GENTLE MASSAGE ON SCALP AND HAIR.



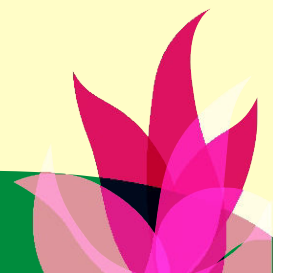
# RHUMAVIN OIL



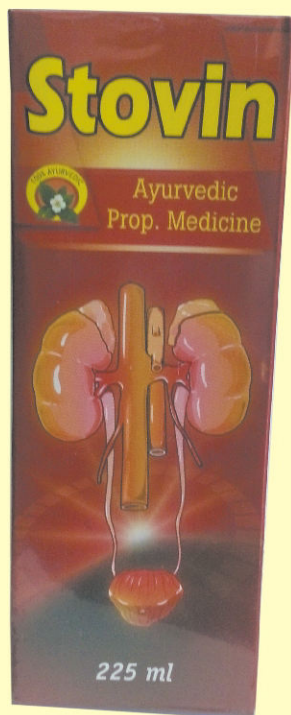
## COMPOSITION : (EACH 10 ML CONTAINS EXT. OF)

KUVADIYA BEEJ	150 MG
ASHELIYA	150 MG
MALKANGANI	150 MG
KAYFAL	150 MG
NAGOD	150 MG
NILGIRI TEL	100 MG
TAL	150 MG
CAMPHOR	100 MG
PANCHGUNI TEL	20 MG
SARSAV TEL TO MAKE	100%

<b>INDICATION</b>	:	USEFULL IN JOINT PAINS, RHUMATOID ARTHRITIS AND INFLAMMATION. SPRAINS AND STRAINS, STIFFNECK BACKACHE AND OTHER MUSCULAR PAINS.
<b>PRESENTATION</b>	:	OIL
<b>PACKING</b>	:	1 x 50 ML, 100 ML
<b>APPLICATION</b>	:	GENTLE MASSAGE ON SCALP AND HAIR.



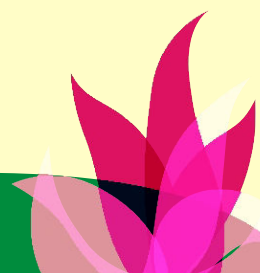
# STOVIN SYRUP



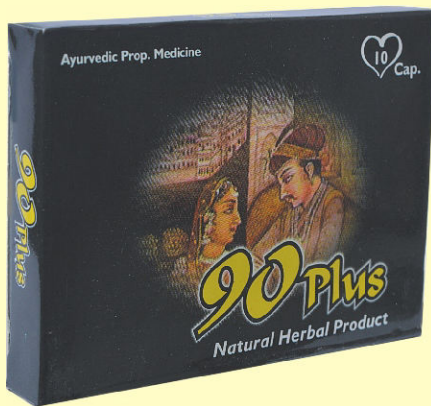
## COMPOSITION : (EACH 10 ML CONTAINS EXT. OF)

SAXIFIRAGA LIGULATA	200 MG
DALICHOS BIFLORUS	100 MG
PIPER NIGRUM	100 MG
BUTEA PRONDOSA	100 MG
FOENICULUM	320 MG
BRYOPHYLLUM CREMATUM	980 MG
SOLANUM XANTHOCARTUM	100 MG
JONESIA ASHOKA	100 MG
ACHYRANTHUS ASPERA	100 MG
SAKAR	100 MG
COLOURED & SYRUP BASE	Q.S

<b>INDICATION</b>	:	IDEAL MEDICINE FOR STONE AND URINARY INFECTIONS AND DISORDERS. SYRUP
<b>PRESENTATION</b>	:	1 x 225 ML
<b>PACKING</b>	:	25 ML TWICE A DAY OR AS DIRECTED BY THE
<b>APPLICATION</b>	:	PHYSICIAN.



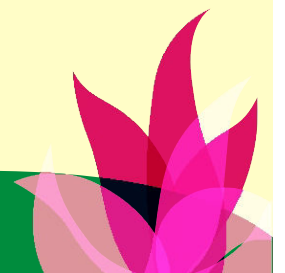
## 90 PLUS CAPSULE



### COMPOSITION : (EACH 10 ML CONTAINS EXT. OF)

ASHWAGANDHA	150 MG
SARPGANDHA	50 MG
KAUCHA	100 MG
SATAVARI	30 MG
SHILAJEET	10 MG
MALTI FAL	20 MG
GOKHARU	50 MG
SAFED MUSLI	15 MG
AKKALAK	10 MG
LOH BHASMA	15 MG
PRAVAL BHASMA	15 MG
ABHRAK BHASMA	15 MG
BANG BHASMA	20 MG

<b>INDICATION</b>	:	FOR STRENGTH AND STEMINA, AS IT DELAYS AGEING PROCESS. VERY USEFUL IN AZOOSPERMIA.
<b>PRESENTATION</b>	:	CAPSULE
<b>PACKING</b>	:	1 x 60 CAPSULE
<b>DOSAGE</b>	:	1 TO 2 CAPSULE A DAY IR AS DIRECTED BY THE PHYSICIAN.



## ARJUN CAPSULE



### COMPOSITION : (EACH CAPSULE CONTAINS EXT. OF)

ASHWAGANDHA	150 MG
BAKAWAN NEEM BEEJ	50 MG
SONAGERU	50 MG
DURVA RAS	50 MG
KUWAR RAS SATVA	50MG
NAGKESHAR	50 MG
TRIFLA	50 MG
DARU HALDAR	125 MG
AJMA	50 MG
INDRAVARUNI	25 MG

<b>INDICATION</b>	:	IDEAL MEDICINE FOR PILES AND FISSURES.
<b>PRESENTATION</b>	:	CAPSULE
<b>PACKING</b>	:	1 x 30 CAPSULE
<b>DOSAGE</b>	:	1 TO 2 CAPSULE TWICE A DAY OR AS DIRECTED BY THE PHYSICIAN.

## CARELUE CAPSULE



### COMPOSITION : (EACH CAPSULE CONTAINS EXT. OF)

PRADRANTAK LOH	10 MG
KAMDUDHA RAS	10 MG
SATAVARI	100 MG
ASHWAGANDHA	50 MG
PUSHYANUG CHURNA	50 MG
ASHOK CHHAL	30 MG
LODHRA	50 MG
RASVANTI	50 MG
DARU HALDAR	50 MG
PRAVAL PISTI	50 MG
SUVARANA MAKSHIK BHASMA	50 MG

<b>INDICATION</b>	:	VERY USEFUL MEDICINE IN LEUKORRHEA
<b>PRESENTATION</b>	:	CAPSULE
<b>PACKING</b>	:	1 x 30 CAPSULE
<b>DOSAGE</b>	:	1 TO 2 CAPSULE TWICE A DAY OR AS DIRECTED BY THE PHYSICIAN.

## MEDOCARE CAPSULE



### COMPOSITION : (EACH CAPSULE CONTAINS EXT. OF)

MAHAYOGRAJ GUGAL	50 MG
TRIFLA GUGAL	100 MG
GOKSHU RADI GUGAL	50 MG
SARPAGANDHA KALPVATI	50 MG
MEDSHOSHINO RAS	100 MG
AROGYA VARDHINI	50 MG
TRIFLA CHURNA	50 MG
BHORINGANI	50 MG

<b>INDICATION</b>	:	IDEAL MEDICINE TO REDUCE WEIGHT AND IT MAINTAINS CHOLESTEROL LEVEL.
<b>PRESENTATION</b>	:	CAPSULE
<b>PACKING</b>	:	1 x 30 CAPSULE
<b>DOSAGE</b>	:	1 TO 2 CAPSULE THRICE A DAY OR AS DIRECTED BY THE PHYSICIAN.

## RHUMACARE CAPSULE



### COMPOSITION : (EACH CAPSULE CONTAINS EXT. OF)

MAHAYOGRAJ GUGAL	250 MG
SATODI	25 MG
TRIFLA	100 MG
GODANTI BHASMA	25 MG
DARU HALDAR	75 MG
BHORINGANI	25 MG

<b>INDICATION</b>	:	IDEAL MEDICINE FOR RHEUMATOID ARTHRITIS AND JOINT PAINS.
<b>PRESENTATION</b>	:	CAPSULE
<b>PACKING</b>	:	1 x 30 CAPSULE
<b>DOSAGE</b>	:	1 TO 2 CAPSULE THRICE A DAY OR AS DIRECTED BY THE PHYSICIAN.

## SWASCARE CAPSULE



### COMPOSITION : (EACH CAPSULE CONTAINS EXT. OF)

ARJUN	50 MG
ARDUSI	50 MG
BHORINGANI	50 MG
BHARANGI	50 MG
DRONPUSPI	150 MG
SUNTH	50 MG
KANTKARI	80 MG
ABRAKH BHASMA	20 MG

<b>INDICATION</b>	:	IDEAL MEDICINE FOR BRONCHITIS, ALLERGY AND ASTHMA.
<b>PRESENTATION</b>	:	CAPSULE
<b>PACKING</b>	:	1 x 30 CAPSULE
<b>DOSAGE</b>	:	1 TO 2 CAPSULE THRICE A DAY OR AS DIRECTED BY THE PHYSICIAN.

## SYOR CAPSULE



### COMPOSITION : (EACH CAPSULE CONTAINS EXT. OF)

GARBHAPAL RAS	75 MG
KAMDUDHA RAS	40 MG
TRIFLA	40 MG
ELAICHI	40 MG
SATAVARI	150 MG
BANG BHASMA	25 MG
PRAVAL PISTI	20 MG
SUKTI BHASMA	40 MG
GODANTI BHASMA	20 MG
SUVARNA MAKSHIK BHASMA	50 MG

<b>INDICATION</b>	:	FOR HEALTHY BABY DURING PREGNANCY.
<b>PRESENTATION</b>	:	CAPSULE
<b>PACKING</b>	:	1 x 30 CAPSULE
<b>DOSAGE</b>	:	1 TO 2 CAPSULE THRICE A DAY OR AS DIRECTED BY THE PHYSICIAN.



## EASY CAPSULE



### COMPOSITION : (EACH CAPSULE CONTAINS EXT. OF)

AJMO	40 MG
HARDE	40 MG
NASOTAR	40 MG
SONAMUKHI	40 MG
DANTIMUL	40 MG
DASMUL	40 MG
BHEDA	40 MG
AMLA	40 MG
INDRAVARUNI	40 MG
JETHI MADH	80 MG
KADU	20 MG
HIMEJ	40 MG

<b>INDICATION</b>	:	FOR CONSTIPATION, INDIGESTION AND GASTRIC PROBLEMS
<b>PRESENTATION</b>	:	CAPSULE
<b>PACKING</b>	:	1 x 60 CAPSULE
<b>DOSAGE</b>	:	1 TO 2 CAPSULE TWICE A DAY OR AS DIRECTED BY THE PHYSICIAN.

## ASHWATONE CAPSULE



### COMPOSITION : (EACH CAPSULE CONTAINS EXT. OF)

ASHWAGANDHA	100 MG
SATAVARI	50 MG
KAUCHA	100 MG
SHILAJEET SUDH	50 MG
GOKHARU	30 MG
GALO	30 MG
AMLA	40 MG
LOH BHASMA	30 MG
PRAVAL BHASMA	30 MG
ABHRAK BHASMA	10 MG
BANG BHASMA	10 MG
SUVARNA MAXIK BHASMA	20 MG

<b>INDICATION</b>	:	AN IDEAL FAMILY HEALTH CAPSULE
<b>PRESENTATION</b>	:	CAPSULE
<b>PACKING</b>	:	1 x 60 CAPSULE
<b>DOSAGE</b>	:	1 TO 2 CAPSULE A DAY OR AS DIRECTED BY THE PHYSICIAN.

# B-NUREX GENERAL HEALTH TONIC



## COMPOSITION : (EACH CAPSULE CONTAINS EXT. OF)

VARDA	25 MG
SHATAVA	10 MG
VAYASHTHA	10 MG
AMRITA	10 MG
KANA	2.5 MG
TRIKANTAKA	10 MG
GOSTANI	5 MG
COLOURED & SUGAR BASE	Q.S.

### INDICATION :

- AN IDEAL HERBAL HAEMETENIC TONIC FOR FAMILY.
- HIGHLY PALETABLE WITH DELICIOUS TASTE AND FLAVOURED.
- FOR GENERAL DEBILITY. LOSS OF APPETITE, DIGESTION, RUNDOWN CONDITION DURING TIME OF PREGNANCY, NOURISHING MOTHER IN ANAEMIC CONDITION AND FOR THE LOSS OF WEIGHT.

### PRESENTATION :

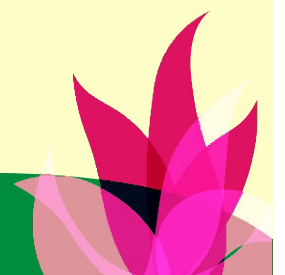
SYRUP

### PACKING :

1 x100 ML, 200 ML

### DOSAGE :

1 TEA SPOON THRICE A DAY OR DIRECTED BY THE PHYSICIAN.



# VENULIV LIVER TONIC



## COMPOSITION : (EACH CAPSULE CONTAINS EXT. OF)

PILHARI	3.5 MG
NAGAR	2.50 MG
VARIDA	5 MG
PUNARNAVA	7.50 MG
VIDANGA	7.50 MG
ATIVISHA	2.50 MG
CHAKRANGI	1.25 MG
DIPIKA	2.50 MG
GRANTHIMUL	5 MG
VAKRA	2.50 MG
SHOBHANJAN	7.50 MG
ROHITAK	2.50 MG
COLOURED AMRANTH & SUGAR BASE	Q.S.

### INDICATION :

- IDEAL MEDICINE IN ANOREXIA.
- IDEAL MEDICINE IN MALNUTRITION.
- IDEAL MEDICINE IN GROWTH FAILURE IN BABY.
- IDEAL MEDICINE IN DELAYED MILESTONE.
- IDEAL MEDICINE IN HEPATITIS WITH OR WITHOUT JAUNDICE.
- IDEAL MEDICINE IN FATTY INFILTRATION OF LIVER.

### PRESENTATION :

SYRUP

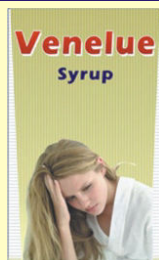
### PACKING :

1 x 100 ML, 200 ML

### DOSAGE :

1 TEA SPOON FULL THREE TIMES A DAY OR AS DIRECTED BY THE PHYSICIAN.

# VENELUE SYRUP



## COMPOSITION : (EACH 5 ML CONTAINS EXT. OF)

RASVANTI	25 MG
DARU HALDAR	25 MG
ASHWANGHANDH	100 MG
DASMUL	150 MG
ASHOK CHALL	125 MG
SATAVARI	125 MG
COLOUR LIGHT GREEN & SUGAR BASE	Q.S.

### INDICATION :

VERY USEFUL MEDICINE IN LEUKORRHEA.

### PRESENTATION :

SYRUP

### PACKING :

1 x 200 ML

### DOSAGE :

ONE TEA SPOON TWICE A DAY OR AS DIRECTED BY THE PHYSICIAN.

# VENEX COUGH SYRUP



## COMPOSITION : (EACH CAPSULE CONTAINS EXT. OF)

TAVAKA	5 MG
SUKSHMA	10 MG
KANA	10 MG
NAGAR	5 MG
BABOOL	10 MG
KALIDRUM	10 MG
PUSHKARMUL	5 MG
BHARANGI	10 MG
TANKANA	5 MG
CAMPHOR	5 MG
KASMARDA	10 MG
COLOUR GREEN & SUGAR BASE	Q.S.

### INDICATION :

- USEFUL IN BRONCHITIS, FARYNGITIS WHOOPING COUGH IN EARLY SAGES.
- USEFUL IN ALLERGIC COUGH AND COLD BRONCHIAL ASTHMA
- A SOOTHING EXPECTORANT AND USEFUL DEMULCENT TO ENSURE A QUICK RESPONSE IN COUGH FOR ALL AGES.

### PRESENTATION :

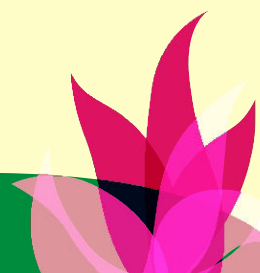
SYRUP

### PACKING :

1 x 100 ML

### DOSAGE :

1 TEA SPOON FULL THREE TIMES A DAY FOR ADULTS.  
ONE TEA SPOON THRICE A DAY FOR CHILDREN.



# VENUTONE GENERAL HEALTH TONIC



## COMPOSITION : (EACH CAPSULE CONTAINS EXT. OF)

ASHVAGANDHA	150 MG
SATAVARI	70 MG
GALO	75 MG
GOKHRU	75 MG
AMLA	75 MG
KANA	30 MG
GOSTANI	30 MG
COLOURED AMARANTH & SUGAR BASE	Q.S.

### INDICATION :

- AN IDEAL HERBAL HAEMETENIC TONIC FOR FAMILY.
- HIGHLY PALETABLE WITH DELICIOUS TASTE AND FLAVOURED.
- FOR GENERAL DEBILITY, LOSS OF APPETITE, DIGESTION, RUNDOWN CONDITION DURING TIME OR PREGNANCY, NOURISHING MOTHER IN ANAEMIC CONDITION AND FOR THE LOSS OF WEIGHT.

### PRESENTATION :

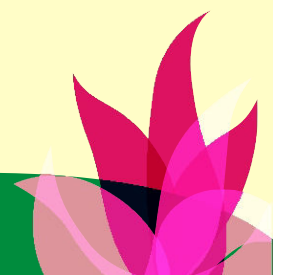
SYRUP

### PACKING :

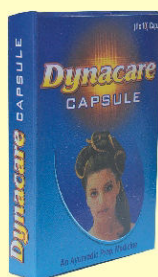
1 x100 ML, 200 ML

### DOSAGE :

1 TEA SPOON FULL THREE TIMES A DAY OR AS DIRECTED BY THE PHYSICIAN.



## DYNA CARE CAPSULE

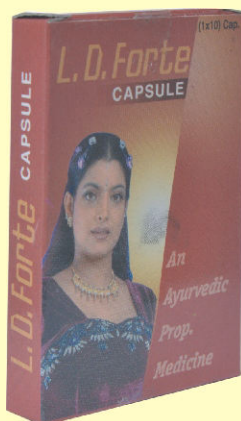


### COMPOSITION : (EACH CAPSULE CONTAINS EXT. OF)

CARICA PAPAYA	350 MG
ALOES INDICA	50 MG
SODII BIBORAS	50 MG
PLUMBAGO ROSEA	50 MG

<b>INDICATION</b>	:	IDEAL MEDICINE FOR AMENORRHEA.
<b>PRESENTATION</b>	:	CAPSULE
<b>PACKING</b>	:	1 x 10 CAPSULE
<b>DOSAGE</b>	:	1 TO 2 CAPSULE THRICE A DAY OR AS DIRECTED BY THE PHYSICIAN.
<b>WARNING</b>	:	CONTRA INDICATED IN PROLONGED PREGNANCY STAGE.

## L.D. FORTE CAPSULE



### COMPOSITION : (EACH CAPSULE CONTAINS EXT. OF)

DAUCUS CAROTA	200 MG
VITEX NEGUNDO	30 MG
ACONITUM FERIX	30 MG
PLUMBAGO ZEYLANICA	30 MG
ELVA	50 MG
GOSSYPIUM RADICI CORTEX	50 MG
PUNICA GRANTUM MUL	30 MG
SAINDHAV	20 MG
PTYCHOTIS AJWAN	20 MG
KASIS BHASMA	20 MG

<b>INDICATION</b>	:	IDEAL MEDICINE FOR AMENORRHEA.
<b>PRESENTATION</b>	:	CAPSULE
<b>PACKING</b>	:	1 x 10 CAPSULE
<b>DOSAGE</b>	:	1 TO 2 CAPSULE THRICE A DAY OR AS DIRECTED BY THE PHYSICIAN.
<b>WARNING</b>	:	CONTRA INDICATED IN PROLONGED PREGNANCY STAGE

## D-NIL CAPSULE

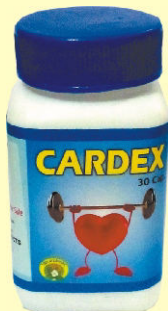


### COMPOSITION : (EACH CAPSULE CONTAINS EXT. OF)

GUDAMAR	40 MG
JAMBU	40 MG
NEEM	40 MG
SUDH SHILAJEET	40 MG
RASAYAN CHURNA	80 MG
JATAMANSI	20 MG
KARELA	20 MG
NAGARMOTH	20 MG
METHI BIJA	20 MG
KAKACHA	20 MG
KADU	10 MG
DRONAPUSPI	10 MG
BILI	10 MG
VACHHANAG	30 MG
SAPTANGI	30 MG
ALAVI	20 MG
KARIYATU	20 MG
ABHAYADI KVATH	30 MG

<b>INDICATION</b>	:	IDEAL MEDICINE FOR DIABETES.
<b>PRESENTATION</b>	:	CAPSULE
<b>PACKING</b>	:	1 x 30 ML, CAPSULE
<b>DOSAGE</b>	:	TWO CAPSULES TWICE A DAY OR AS DIRECTED BY THE PHYSICIAN.

## CARDEX CAPSULE

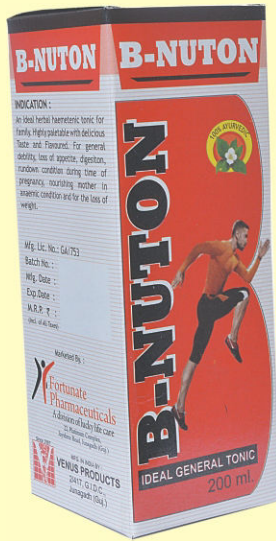


### COMPOSITION : (EACH CAPSULE CONTAINS EXT. OF)

HINGA	10 MG
TULSHI	100 MG
ARJUN CHHAL	200 MG
SUNTHA	100 MG
ELAICHI	90 MG

<b>INDICATION</b>	:	IDEAL MEDICINE FOR HEALTHY HEART.
<b>PRESENTATION</b>	:	CAPSULE
<b>PACKING</b>	:	1 x 30 CAPSULE
<b>DOSAGE</b>	:	TWO CAPSULE TWICE A DAY OR AS DIRECTED BY THE PHYSICIAN.

## B-NUTON SYRUP



### COMPOSITION : (EACH 10 ML CONTAINS EXT. OF)

ASHVAGANDHA	150 MG
SATAVARI	70 MG
GALO	75 MG
GOKHRU	75 MG
AMLA	75 MG
KANA	30 MG
GOSTANI	30 MG
COLOURED AMARANTH & SUGAR BASE	Q.S.

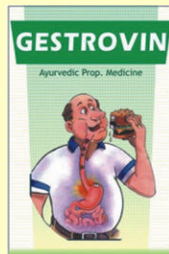
<b>INDICATION</b>	:	<ul style="list-style-type: none"> <li>● AN IDEAL HERBAL HAEMETENIC TONIC FOR FAMILY.</li> <li>● HIGHLY PALETABLE WITH DELICIOUS TASTE AND FLAVOURED.</li> <li>● FOR GENERAL DEBILITY, LOSS OF APPETITE, DIGESTION, RUNDOWN CONDITION DURING TIME OF PREGNANCY, NOURISHING MOTHER IN ANAEMIC CONDITION AND FOR THE LOSS OF WEIGHT.</li> </ul>
-------------------	---	---

<b>PRESENTATION</b>	:	SYRUP
---------------------	---	-------

<b>PACKING</b>	:	1 x 200 ML
----------------	---	------------

<b>DOSAGE</b>	:	1 TEA SPOON FULL THREE TIMES A DAY OR AS DIRECTED BY THE PHYSICIAN.
---------------	---	---

## GESTROVIN GASTRITIS SYRUP



### COMPOSITION : (EACH 10 ML CONTAINS EXT. OF)

ASHWAGANDH	20 MG
BHRUNGAJ	20 MG
GOSTANI	20 MG
TRIFALA	20 MG
DASMUL	20 MG
HARDE	50 MG
COLOURED & SUGAR BASE	Q.S.

<b>INDICATION</b>	:	IDEAL MEDICINE IN INDIGESTION AND GASTRITIS.
-------------------	---	--

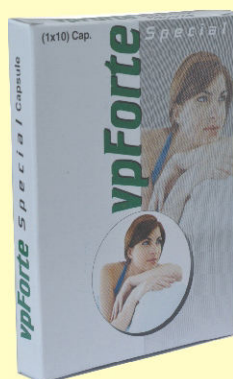
<b>PRESENTATION</b>	:	SYRUP
---------------------	---	-------

<b>PACKING</b>	:	1 x 100 ML, 200 ML
----------------	---	--------------------

<b>DOSAGE</b>	:	1 TEA SPOON THRICE A DAY OR AS DIRECTED BY THE PHYSICIAN.
---------------	---	---



## V. P. FORTE CAPSULE

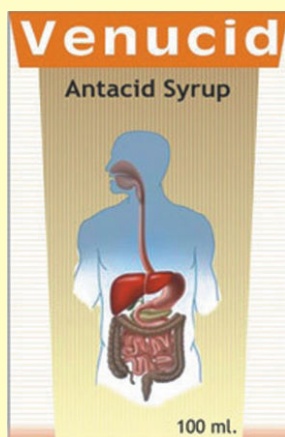


### COMPOSITION : (EACH CAPSULE CONTAINS EXT. OF)

CAROT SEEDS	300 MG
SODII BIBORAS	15 MG
VITEX NEGUNDO	30 MG
PLUMBAGO ZEYLANICA	30 MG
ELVA	40 MG
GOSSYPIUM RADICI CORTEX	40 MG
PUNICA GRANTUM MUL	20 MG
ACONITUM FEROX	15 MG
KASIS BHASMA	10 MG

<b>INDICATION</b>	:	IDEAL MEDICINE FOR AMENORRHEA.
<b>PRESENTATION</b>	:	CAPSULE
<b>PACKING</b>	:	1 x 10 CAPSULE
<b>DOSAGE</b>	:	1 TO 2 CAPSULE THRICE A DAY OR AS DIRECTED BY THE PHYSICIAN.
<b>WARNING</b>	:	CONTRA INDICATED IN PROLONGED PREGNANCY STAGE.

## VENUCID ANTACID SYRUP



### COMPOSITION : (EACH 5 ML CONTAINS EXT. OF)

KALITAK	5 MG
DRAVIDI	5 MG
AMRITA	5 MG
NAGAR	5 MG
KRUTMAL	5 MG
DHANYAK	5 MG
GOSTANI	5 MG
NISHOTH	5 MG
VYASHTHA	5 MG
TANTRIK	5 MG
COLOURED & SUGAR BASE	Q.S.

<b>INDICATION</b>	:	FOR STOMACH UPSET, HEARTBURN AND ACID INDIGESTION. RELIEVES BLOATING AND GAS.
<b>PRESENTATION</b>	:	SYRUP
<b>PACKING</b>	:	1 x 100 ML, 200 ML
<b>DOSAGE</b>	:	ONE TEA SPOON THRICE A DAY OR AS DIRECTED BY THE PHYSICIAN.