



List No. 7

w.e.f. Jan 15, 2018



*EDUCATIONAL AIDS
FOR
COMMUNITY MEDICINE*

Dbios

Charts (500)

Models (190)

Slides (50)

Kits &

Instruments (35)

Models on Hygiene & Public Health

- AM 167. Insanitary Well
- AM 168. Sanitary Well
- AM 169. Step Well
- AM 170. Deep Well
- AM 171. Deep Tubewell
- AM 172. Slow Sand Filter
- AM 173. Rapid Sand Filter
- AM 174. Pastuer's Chamber Sand Filter
- AM 175. Berkefeld Filter
- AM 176. PIT Laterine (Dug well lateriane)

Soil Sanitation

- AM 177. Bore Hole Laterine
- AM 178. Trench Laterine
- AM 178A Sanitary Laterine
- AM 179. Septik Tank Laterine
- AM 180. House Drainage System
- AM 181. Activated Sludge Process
- AM 182. Incinerator (Beehive type)
- AM 183. RCA Laterine



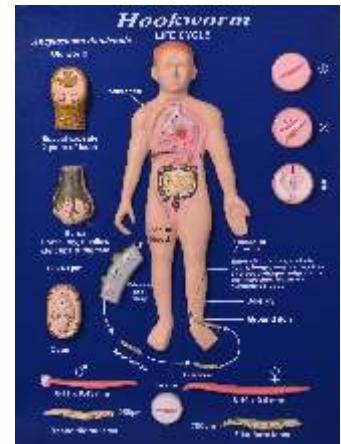
AM 168

LIFE CYCLE models

- AM 130 L.C. of Leishmania tropica (SAND FLY)
- AM 131 L.C. of Plasmodium vivax
- AM 133 L.C. of Anopheles
- AM 146 L.C. of Ancylostoma duodenale (HOOK WORM)
- AM 149 L.C. of Enterobius vermicularis
- AM 151 L.C. of Ascaris lumbricoides (ROUND WORM)
- AM 152 L.C. of Wucheria bancrofti (FILARIA)
- AM 153 L.C. of a Culex
- AM 154 L.C. of a N Aedes (STEGOMYIA)
- AM 156 L.C. Strongyloides stercoralis
- AM 157 L.C. Trichuris trichiura (Whip worm)
- AM 158 L.C. Taenia saginata (Beef tape worm)
- AM 159 L.C. Entamoeba histolytica (Causing amoebiasis)
- AM 160 L.C. Taenia solium (pork tape worm)
- AM 161 L. C. of a Giardia intestinalis (G. Lamblia)
- AM 163 L.C. of Balantidium coil
- AM 164 L.C. Dracunculus medinensis (Guinea worm)
- AM 165 L.C. Fasciola hepatica (Sheep liver fluke)
- AM 166 L.C. Echinococcus granulosus (Dog tape worm)



AM 123 Toxoplasma Condii



AM 146 Hookworm

IMP 154 Uterus coronal Section



IMP 155 Uterus (Normal)



IMP 156 Female Pelvic organ (Coronal Section)



Dbios-0110 Male Condom Model

- Features :
1. Mounted on a lucite stand
 2. Penis is erect
 3. Simulation of ejaculation
- PACKAGE SIZE:
19cm*15.5cm*17.5cm
G.W.: 0.46KG



AM 96A Model of Condom



AM 96B Tubectomy



AM 96C Vasectomy



Parasite models

- AM 201 Sources of Vitamins A
- AM 202 Sources of Vitamins B
- AM 203 Sources of Vitamins C
- AM 204 Sources of Vitamins D
- AM 205 Sources of Vitamins E
- AM 206 AIDS Virus
- AM 207 Small Pox
- AM 208 Chicken Pox
- AM 209 Filaria Leg
- AM 211 Leprosy Face
- AM 224 Measles
- AM 235 Tonsil
- AM 242 Dental Caries
- AM 247 Scurvey
- AM 248 Facial Paralysis
- AM 250 Kwashiorkor
- AM 251 Pellagra
- AM 252 Syphilis

Models Showing Causes, Symptoms, Preventions & Treatments

- DCMM 1 Hepatitis
- DCMM 2 Aids
- DCMM 3 Dysentery
- DCMM 4 Chicken Pox
- DCMM 5 Leprosy
- DCMM 6 Cancer
- DCMM 7 Causes of Diseases
- DCMM 8 Prevention of Diseases
- DCMM 9 Jaundice
- DCMM 10 Tuberculosis
- DCMM 11 Influenza
- DCMM 12 Plague
- DCMM 13 Cholera
- DCMM 14 Malaria
- DCMM 15 Typhoid

Model



**DCMM 1
Hepatitis**

Dbios DISEASED MODELS

CARDIOVASCULAR DISORDERS

- PM1 MYOCARDIAL INFRACTION
- PM2 RHEUMATIC HEART DISEASE

RESPIRATORY DISORDES

- PM3 LUNG CANCER
- PM4 PNEUMONIA
- PM5 SARCOIDOSIS
- PM6 TUBERCULOSIS

GASTROINTESTINAL DISORDERS

- PM7 APPENDICITIS
- PM8 COLORECTAL CANCER
- PM9 ESOPHAGEAL CANCER
- PM10 GASTRIC CANCER
- PM11 LIVER CANCER
- PM12 PANCREATIC CANCER
- PM13 ULCERS

MUSCULOSKELETAL DISORDERS

- PM14 BONE TUMORS
- PM15 OSTEOARTHRITIS
- PM16 OSTEOMYELITIS

IMMUNOLOGIC DISORDERS

- PM17 THYROID CANCER

REPRODUCTIVE DISORDERS

- PM18 BENIGN BREAST CONDITIONS
- PM19 BREAST CANCER
- PM20 ECTOPIC PREGNANCY
- PM21 ENDOMETRIAL CANCER
- PM22 ERECTILE DYSFUNCTION
- PM23 FIBROID DISEASE OF UTERUS
- PM24 OVARIAN CANCER
- PM25 OVARIAN CYSTS
- PM26 PROSTATE CANCER

- PM27 SEXUALLY TRANSMITTED INFECTIONS

- PM28 TESTICULAR CANCER
- PM29 VAGINITIS
- PM30 VULVAR CANCER
- PM31 ACUTE RENAL FAILURE
- PM32 BLADDER CANCER
- PM33 RENAL CALCULI
- PM34 RENAL CANCER



**PM1
MYOCARDIAL INFRACTION**



**PM9
ESOPHAGEAL CANCER**

Dbios DISEASED MODELS

SKIN DISORDERS

PM35 ATOPIC DERMATITIS

SENSORY DISORDERS

PM36 HEARING LOSS

PM37 CONJUNCTIVITIS

PM38 GLAUCOMA

PM39 MENIERE'S DISEASE

PM40A HYPERTENSION; BRAIN

PM40B HYPERTENSION; HEART

PM40C HYPERTENSION; KIDNEY

PM40D HYPERTENSION; ARTERY

PM40E HYPERTENSION; EYE

PM41A DIABETES TYPE II; HEART

PM41B DIABETES TYPE II; KIDNEY

PM41C DIABETES TYPE II; EYE

PM41D DIABETES TYPE II; NEURON

PM41E DIABETES TYPE II; FOOT

PM41F DIABETES TYPE II; PANCREAS

PM41G DIABETES TYPE II; ARTERY

PM41H DIABETES TYPE II; BRAIN



**PM35
ATOPIC DERMATITIS**



**PM38
GLAUCOMA**

Dbios DISEASED MODELS

CARDIOVASCULAR DISORDERS

PM2A HEART DISEASE (CONGESTIVE, MYOCARDIAL INFRACTION)

PM2B ARTERY

PM2C ARTERY (NORMAL, FATTY STREAK, ATHEROMA & FIBROUS PLAQUE AND BLOCKAGE)

RESPIRATORY DISORDES

PM3A LUNG PATHOLOGY (CANCER, ASTHMA)

PM3B LUNG (COPD, NORMAL)

PM6A BRONCHUS (NORMAL, SWELLING, HYPERSECRETION & MUSCLE SPASM)

GASTROINTESTINAL DISORDERS

PM11A LIVER WITH PATHOLOGIES

PM13A STOMACH (GASTRIC, DUODENAL ULCER)

PM13B COLON PATHOLOGIES (4 STAGES)

PM13C COLON (COMMON PATHOLOGY)

PM13D ESOPHAGUS; NORMAL, BARRETT'S, HIATAL HERNIA, BARRETT'S WITH TUMOR

MUSCULOSKELETAL DISORDERS

PM16A LUMBER VERTEBRAE DEGENERATION (NORMAL, HERNIATED DISC, BONE/DISC DEGENERATION & ADVANCED OSTEOPOROSIS)

PM16B STAGES OF OSTEOARTHRITIS (DEGENERATIVE JOINT DISEASE) 3 STAGES.

PM16C 4 STAGES KNEE JOINTS SYNTHESIS MODEL

PM16D 4 STAGES DISEASED VERTEBRAE

PM16E OSTEOPOROSIS MODEL

PM16F INTER-VERTEBRA DISC WITH PATHOLOGIC SYMPTOM

MMUNOLOGIC DISORDERS

PM17A THYROID DISEASES (LYMPHOCYTIC THYROIDITIS, GRAVES DISEASE & PAPILLARY CARCINOMA)

PM17B OBESITY; PEAR SHAPE, APPLE SHAPE

IREPRODUCTIVE DISORDERS

PM19A BREAST (COMMON PATHOLOGY)

PM23A UTERUS-OVARY (COMMON PATHOLOGY)

PM26A PROSTATE (ENLARGE WITH HARD, IRREGULAR SURFACE & SEMINAL VESICLE INVOLVEMENT. INDICATING CANCER)

PM28A STAGING OF TESTIS TUMORS (3 STAGES)

PM34A DISEASED KIDNEY

PM34B KIDNEY STONE

PM34C RECTUM

SKIN DISORDERS

PM35A SKIN PATHOLOGY

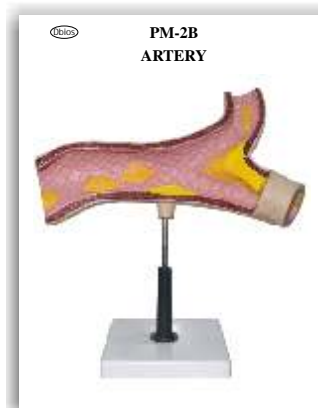
PM35B COMMON SKIN ACNE

PM35C SKIN BURNS

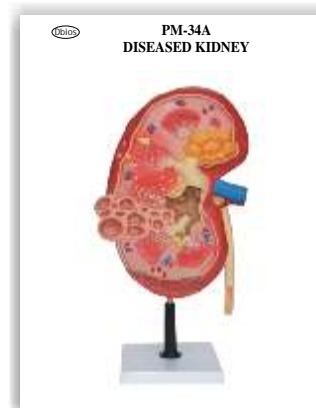
PM35D SKIN CANCER

PM42 TEETH; COMMON PATHOLOGIES

Pm43 DIABETES; DIABETIC NEUROPATHY, RETINOPATHY, NEPHROPATHY, ATHEROSCLEROSIS



**PM 2B
ARTERY**



**PM 34A
DISEASED KIDNEY**

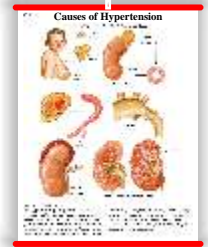
Also available Charts, Models & Slides
Anatomy Department

Human Anatomy Models 150
 Embryology Models 80
 Histology Models 15
 Charts:- Anatomy, Embryology
 & Histology 600
 Slides :- Histology USA Set of 100
 Histology German Set of 62
 Skeleton:- Articulated & Loose Bones
 Scientist Portraits 90



Also available Charts, Models & Slides
Pathology Department

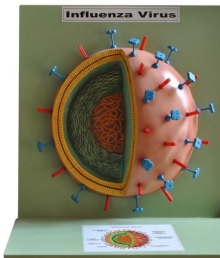
Pathology Models 70
 Charts:- 476
 Histopathology charts :- 250
 Histopathology Slides :-
 USA Set of 100
 Scientist Portraits 50



PM 5
 SARCOIDOSIS

Also available Charts, Models & Slides
Microbiology Department

Microbiology Models 35
 Charts:- 200
 Slides :- Microbiology Set of 50
 Scientist Portraits 90



MB 305



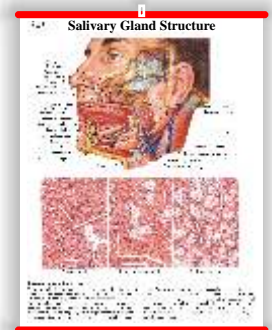
MB 307

Also available Charts, Models & Slides
Physiology Department

Physiology Models 45
 Charts 191
 Scientist Portraits 55

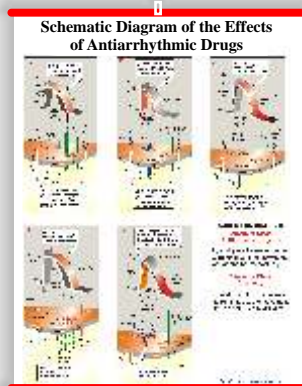


DIGESTION OF PROTEIN
 PHM 6 Rs. 8500/-



Also available Charts, Models & Slides
Pharmacology Department

Pharmacology Models 15
 Charts 600
 Scientist Portraits 55

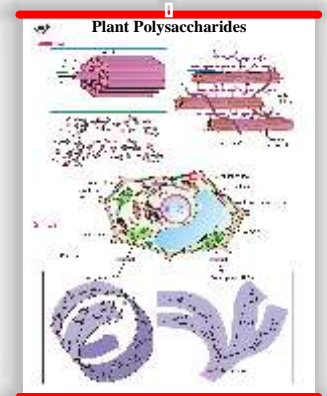


Also available Charts, Models & Slides
Bio-Chemistry Department

Bio-Chemistry Models 15
 Charts 252
 Scientist Portraits 75



DBCM 17
 Protein Structure



Classification of food Set 50

(With card showing Nutrients, Proteins, Carbohydrates etc. Value)

Cereals and millets
Pulses
Vegetables
Fruits
Nuts and oilseeds etc...



Specimen wet or dry

- | | | |
|--------------------------------|-----------------------------|---------------------------|
| 1. <i>Fasciola</i> | 14. Pin Worm | 27. Guinea worm |
| 2. <i>Ascaris</i> Male | 15. Cyclops | 28. Tape worm with scolex |
| 3. Mosquito Anopheles | 16. Pediculus | |
| 4. Fish Fluke | 17. Schistosoma | |
| 5. <i>Ascaris</i> Female | 18. Entrobilus | |
| 6. Mosquito <i>Culex</i> | 19. Fiver fluke | |
| 7. Tape worm (<i>Taenia</i>) | 20. Aspergillus | |
| 8. <i>Ancylostoma</i> | 21. Hydatid cyst liver | |
| 9. <i>Musca</i> (House Fly) | 22. Leech | |
| 10. Tape Worm Cysticercus | 23. Mucor | |
| 11. Bed Bug | 24. Cray fish | |
| 12. Pediculus (head Louse) | 25. Fusarium | |
| 13. <i>Ascaris</i> Male/Female | 26. Dracvnculus (Medinosis) | |



Tape worm L.H.



Ascaris Male/Female

Slides for Community Medicine

- | | |
|----------------------|----------------------|
| C01 HOUSE FLY EGG | C18 MOSQUITO ADULT |
| C02 HOUSE FLY LARVAE | C19 MOSQUITO M.P. |
| C03 HOUSE FLY PUPA | C20 MOSQUITO LEG |
| C04 HOUSE FLY MALE | C21 ANOPHELES EGG |
| C05 HOUSE FLY FEMALE | C22 ANOPHELES LARVAE |
| C06 HOUSE FLY LEG | C23 BED BUG W.M. |
| C07 HOUSE FLY M.P. | C24 BED BUG LEG |
| C08 HOUSE FLY WING | C25 ASCARIS EGG |
| C09 CULEX EGG | C26 ASCARIS MALE |
| C10 CULEX LARVAE | C27 ASCARIS FEMALE |
| C11 CULEX PUPA | C28 SAND FLY EGG |
| C12 CULEX ADULT | C29 SAND FLY LARVAE |
| C13 CULEX M.P. | C30 SAND FLY PUPA |
| C14 CULEX LEG | C31 SAND FLY MALE |
| C15 MOSQUITO EGG | C32 SAND FLY FEMALE |
| C16 MOSQUITO LARVAE | C33 FRUIT FLY MALE |
| C17 MOSQUITO PUPA | C34 FRUIT FLY FEMALE |



Set of 50 in Box

- | |
|-------------------------------------|
| C35 HEAD LICE EGG |
| C36 HEAD LICE ADULT |
| C37 HOOKWORM |
| C38 SOFT TICK |
| C39 HARD TICK |
| C40 TAPEWORM PROGLOTTID C.S. |
| C41 TAPEWORM MATURE |
| C42 TAPEWORM IMMATURE |
| C43 TAPEWORM SCOLEX |
| C44 COCKROACH M.P |
| C45 COCKROACH LEG |
| C46 COCKROACH ANTENNA |
| C47 FASCIOLA HEPATICA |
| C48 FASCIOLA HEPATICA EGG |
| C49 DAPHNIA |
| C50 CYCLOPS |

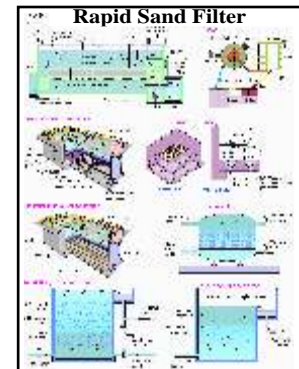
Water Treatment and Sanitation Lab

Thick Laminated both sides & attached with Plastic Strips
Thick Laminated & Framed on NU-Wood Board

Size 20"x26"
Size 20"x26"

- CH 2490 Sedimentation Tank
- CH 2491 Slow sand filter Water
- CH 2492 Rapid sand Filter Water
- CH 2493 Water purification plant-I
- CH 2494 Water purification plant-II
- CH 2495 Water purification plant-III
- CH 2496 Sewage treatment plant-I
- CH 2497 Sewage treatment plant-II
- CH 2498 Sewage Treatment plant-III

All Charts
Also Available Size: 30"x40"
Laminated & Fitted with Plastic Rollers



Breast Care Charts

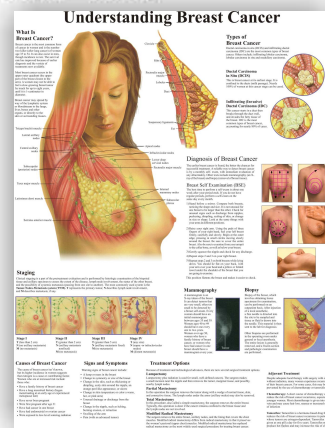
- BCC 11. Better health through awareness
- BCC 12. Risk factor for breast cancer
- BCC 13. Warning signs of breast cancer
- BCC 14. Breast cancer detection method
- BCC 15. Basic BSE method



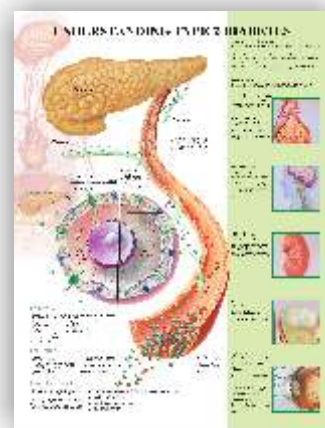
diseases & disorders charts

Thick Laminated both sides & attached with Plastic Strips
Thick Laminated & Framed on NU-Wood Board

- 8310 Thyroid Diseases
- 9970 The Human Spine-Disorders
- 9877 Arthritis-Joint Inflammation
- 9912 Heart Diseases
- 9915 Cardiovascular Disease
- 9774 Understanding Bacterial Infections
- 9767 Hypertension
- 9798 Understanding-Hypertension
- 9769 Reno vascular Hypertension
- 8022 Dermatomes
- 9979 Migraines & Headaches
- 9868 Understanding Stroke
- 9867 Understanding-Epilepsy
- 9862 Understanding Asthma
- 9875 Understanding Common Cold
- 9731 Understanding Ulcers
- 9992 Understanding Hepatitis
- 9755 Understanding Diabetes
- 9754 Understanding Diabetes Type -II
- 9797 Diseases of the Urinary Tract
- 9758 Understanding Breast Cancer
- 9757 Understanding Breast Disease
- 9977 Understanding Menopause
- 9881 Understanding Osteoporosis
- 9864 Understanding Allergies
- 9998 Understanding Skin Cancer
- 9756 Understanding Cancer
- 9778 Metabolic Syndrome
- 9974 Understanding Depression
- 9073 Diseases of Lungs
- 9286 Understanding Glaucoma
- 8859 Understanding Influenza
- 9775 Understanding Viral infection
- 9776 Risk of obesity



9758



9754

Imported USA
W-13 Understanding
Aids Life Cycle
Sized 39"X19"
Laminated on Board
@ Rs. 3400/-

- 9197 Sleep Disorder
- 8953 Deep Vein Thrombosis
- 9861 Disease of Digestive System
- 9760 Understanding HIV & AIDS
- 9695 Disorder of the Eye
- 9765 Sexually Transmitted infection
- 9965 Gastroesophageal Disorders & Digestive Anatomy
- 9866 Disorders of the Teeth & Jaw
- 9696 Dangers of Alcohol
- 9865 Dangers of Smoking
- 9978 Understanding Parkinson's Disease
- 9976 Understanding Alzheimer's
- 9882 Understanding Cholesterol
- 9894 Keys to Healthy Eating
- 9779 Weight Control

- GS 10 Deformitis of feet
- GS 11 Sports Injuries
- GS 13 Rhinitis and Sinusitis
- GS 14 Respiratory Tract Infections
- GS 15 Pneumonia
- GS 16 Common Cardiac Disorders
- GS 21 Colon Cancer
- GS 22 Diabetes mellitus
- GS 33 Gastroesophageal Reflux Disease
- GS 34 Decubitus Ulcers
- GS 35 Flu (Influenza)
- GS 36 Acceleration Injury to the Cervical Spine
- GS 37 Drug Dependence
- GS 38 Alcohol Dependence
- GS 39 Nicotine Dependence

Thick Laminated both sides & attached with Plastic Strips Size 20"x26"
Thick Laminated & Framed on NU-Wood Board Size 20"x26"

or

All Charts Also Available Size: 30"x40" Laminated & Fitted with Plastic Rollers

- | | |
|--|---|
| <ol style="list-style-type: none"> 1. Amenia. 2. Rabies. 3. Sandfly. 4. Tetanus. 5. Viruses. 6. WHO (EPI). 7. Dengue. 8. ORS. 9. Dehydration. 10. Diarrhoea. 11. Leprosy. 12. Malnutrition. 13. Poliomyelitis. 14. Rubella (Measles). 15. Protein Energy Malnutrition. 16. Maternal and Child Health Care. 17. Comparative Studies of Aedes, Anopheles & Culex. 18. Component of Primary Health Center. 19. Health Effects in Bangladesh Due to Flood. 20. Medical Education For Essential Health Services Achievement. 21. Differences Between Clinical Diagnosis and Community Diagnosis. 22. Difference Between Community Medicine and Hospital Medicine. 23. Natural History of a Communicable Disease. 24. Hydrologic Cycle. 25. Difference Between Slow Sand Filters and Rapid Sand Filters. 26. Phase of Break-Point Chlorination. 27. Color Coding for Waste Containers. 28. Biomedical Waste (Handling and Management). 30. Comparative Features of the Mosquitoes in their Life-Cycle. 31. Animal Reservoir. 33. National Immunization Schedule (Revised) (Routine Immunization Schedule). 34. Difference Between EPI and UIP. 35. Difference Between Smallpox and Monkey-pox. 36. Diagnostic Algorithm of TB in RNTCP (by Quality Sputum Microscope). 37. Categorization of Cases. 38. Treatment and Follow-up Smear-Positive Cases. 39. Treatment and Follow-up Smear-Negative Cases. 40. Assessment of the Child with Diarrhea for the Degree of Dehydration and Management. 41. Difference Between Cholera and Food Poisoning. 46. WHO Home-based Growth Charts. 48. Weight-for-age Chart used in ICDS Scheme in India. 49. Output of breast milk at different stages of lactation 50. Flow chart of optimum newborn care 51. Apgar score 52. Types of preterm birth and risk factors involved 53. Comparison between breast milk during the 1st month of lactation and unprocessed cow milk 54. Average weight and height increase during the first 5 years 55. Milestones of Development | <ol style="list-style-type: none"> 56. Comparison of WHO with NCHS weight-for-age Z-scores for Boys & Girls 57. Fetal-Infant Growth Chart of Preterm Infants 58. Growth & Development 59. Growth Chart (ICDS) 60. Principal features of server PEM 61. Growth after Birth 62. Substances and parameters in drinking-water that may give rise to complaints from consumers 64. Arthropod-Born diseases 65. Classification of health-care waste 66. Main advantages and disadvantages of treatment and disposal options 67. Differences between smallpox and chickenpox 68. Natural History of Disease 69. Bishop Score 71. Hand Washing 72. Antenatal Checkup 73. Postnatal Care 74. Antenatal Examination 75. Active Management of Third Stage of Labour (AMTSL) 76. Breastfeeding 77. Labour Room Sterilization 78. Operation Theatre Sterilization 79. Partograph 80. Pre Eclampsia 81. Processing of Items for Reuse 82. Universal Infection Prevention Practices 83. Neonatal Resuscitation 84. Vaginal Bleeding (Before 20 Weeks) 85. Eclampsia 86. Antepartum Haemorrhage 87. Management of Atonic PPH 88. Management of PPH 89. Matrix for high Impact List of Minimum Essential Commodities 90. Matrix for high Impact to be Implemented with High Coverage and High Quality 91. Ensuring Child Health and Nutrition 92. Malaria Prevention and Treatment an ASHA's Role |
|--|---|



33 Immunization Schedule

Thick Laminated both sides & attached with Plastic Strips
Thick Laminated & Framed on NU-Wood Board

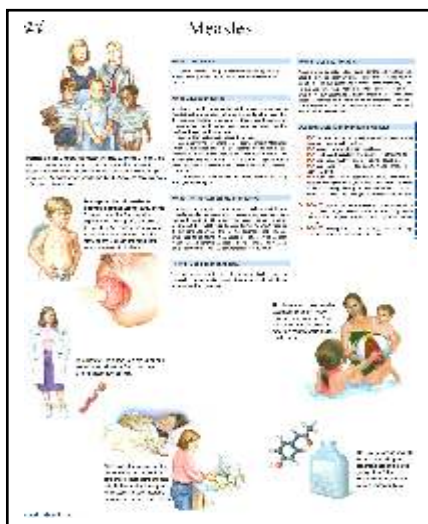
Size 20"x26"
Size 20"x26"

or

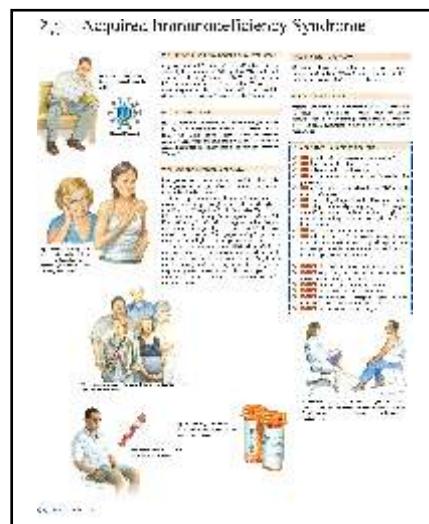
All Charts Also Available Size: 30"x40" Laminated & Fitted with Plastic Rollers

INFECTIOUS DISEASES

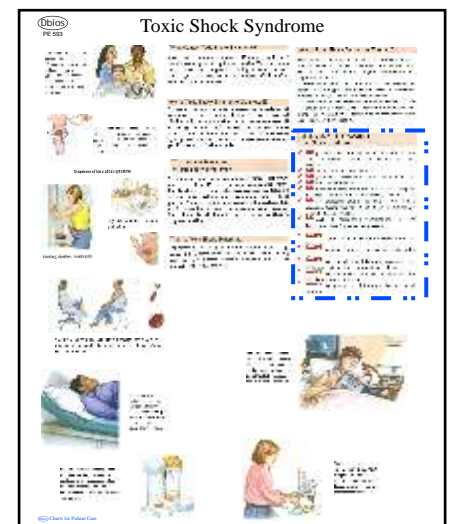
- | | | |
|---|---|--|
| PE-489 Aids
PE-495 Acute Bronchitis
PE-231 Amebiasis
PE-265 Ascariasis (Round Worm Infestation)
PE-157 Athlete's Foot (Tinea Pedis; Ringworm of Foot)
PE-573 Bacterial Pneumonia
PE-73 Balanitis
PE-347 Bartholin Cyst
PE-519 Boil
PE-491 Brain Abscess
PE-493 Breast Abscess
PE-79 Candidiasis (Thrush)
PE-497 Cat Scratch Disease
PE-499 Cellulitis
PE-355 Cervicitis
PE-357 Chancroid
PE-81 Chickenpox (Varicella)
PE-501 Common Cold
PE-505 Conjunctivitis (Pink Eye)
PE-853 Croup (laryngotracheobronchitis)
PE-507 Cryptococcosis
PE-509 Cysticercosis
PE-361 Cystitis
PE-511 Ear Ache, Child
PE-513 Endocarditis
PE-515 Epididymitis
PE-93 Erysipelas
PE-97 Fifth Disease
PE-99 Folliculitis
PE-293 Gastroenteritis (Stomach Flu)
PE-373 Genital Herpes Hsv-2)
PE-503 Genital Warts (Condyloma Acuminatum)
PE-243 Giardiasis
PE-523 Gingivitis
PE-415 Gonococcal Urethritis (Urethritis)
PE-525 Gonorrhea
PE-377 Granuloma Inguinate
PE-103 Hand-foot-mouth Disease | PE-301 Helicobacter Pylori Infection (Gastritis)
PE-309 Hepatitis- A
PE-527 Hepatitis- B
PE-529 Hepatitis- C
PE-531 Herpangina
PE-313 Hookworm Infestation
PE-533 Hiv Infection
PE-535 Human Pappillomavirus (HPV) Infection
PE-107 Impetigo
PE-539 Influenza
PE-541 Laryngitis
PE-923 Legionnaires Disease
PE-111 Leprosy (Hansen's Disease)
PE-543 Lice (Pediculosis)
PE-545 Listeriosis
PE-319 Liver Abscess (Hepatic Abscess)
PE-547 Ling Abscess
PE-247 Lyme Disease
PE-381 Lymphogranuloma Venereum (LGV)
PE-249 Malaria
PE-551 Mastoiditis
PE-115 Measles (Rubeola)
PE-553 Meningitis
PE-119 Molluscum Contagiosum
PE-555 Mononucleosis (Mono;kissing Disease)
PE-557 Mumps
PE-575 Mycoplasmal Pneumonia
PE-43 Myocarditis
PE-559 Nail Fungus
PE-417 Nongonococcal Urethritis
PE-561 Oral Herps (HSV-1)
PE-563 Orchitis
PE-565 Osteomyelitis
PE-567 Otitis Externa (Swimmer's Ear)
PE-567 Otorhinolaryngology (ENT)
PE-123 Paronychia
PE-399 Pelvic Abscess
PE-401 Pelvis Inflammarty Disease (PID)
PE-405 Perirectal Abscess
PE-933 Pertussis (Whooping Cough) | PE-571 Pinworms, Child
PE-577 Pneumocystis Pneumonia
PE-581 Prostatitis
PE-333 Pseudomembranous Colitis
PE-583 Pyelonephritis
PE-253 Rabies
PE-691 Ramsey Hunt Syndrome
PE-585 Reiter's Syndrome
PE-587 Rheumatic Fever
PE-133 Ringworm (Tinea Coroporis)
PE-521 Rubella
PE-835 Salivary Gland Inflammation (Sialoadenitis)
PE-137 Scabies
PE-139 Scarlet Fever, Child
PE-537 Septic Arthritis (Infectious Arthritis; Joint Infection)
PE-143 Shingles
PE-589 Sinusitis
PE-149 Steven-johnson Syndrome (Sjs)
PE-591 Stomatitis (Canker Sores: Trench Mouth)
PE-411 Syphilis
PE-257 Tapeworm Infestation
PE-259 Tetanus
PE-149 Tineas Capitis (Ringworm)
PE-153 Tinea Crurus (Jock Itch)
PE-155 Tinea Infections (Ringworm)
PE-159 Tinea Versicolor
PE-593 Toxic Shock Syndrome
PE-595 Toxoplasmosis
PE-597 Traveler's Diarrhea (TD)
PE-599 Trichinosis
PE-413 Trichomoniasis
PE-601 Tuberculosis (TB)
PE-419 Urinary Tract Infection (UTI)
PE-429 Vaginal Bacterial Infection
PE-427 Vaginal Yeast Infection
PE-579 Viral Pneumonia
PE-165 Wart (Plantar, Flat, Genital Warts) |
|---|---|--|



PE 115



PE 489



PE 593

Thick Laminated both sides & attached with Plastic Strips
Thick Laminated & Framed on NU-Wood Board

Size 20"x26"
Size 20"x26"

or

All Charts Also Available Size: 30"x40" Laminated & Fitted with Plastic Rollers

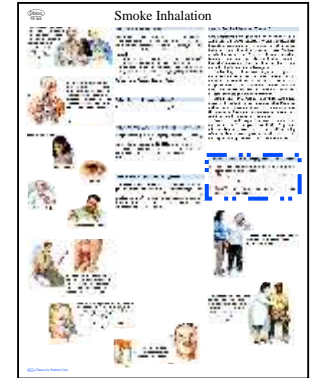
ENVIRONMENTAL MEDICINE

- PE-231 Amebiasis
- PE-265 Ascariasis (Round Worm Infestation)
- PE-239 Bacterial Food Poisoning
- PE-245 Bites & Stings
- PE-223 Botulism
- PE-235 Burns
- PE-237 Carbon Monoxide Poisoning
- PE-497 Cat Scratch Disease
- PE-507 Cryptococcosis
- PE-509 Cysticercosis
- PE-241 Frostbite
- PE-243 Giardiasis

- PE-313 Hook Worm Infestation
- PE-545 Listeriosis
- PE-247 Lyme Poisoning
- PE-249 Malaria
- PE-251 Poison Ivy (Rhus Dermatitis)
- PE-253 Rabies
- PE-255 Salmonellosis (Salmonella)
- PE-929 Smoke Inhalation
- PE-257 Tapeworm Infestation
- PE-259 Tetanus
- PE-595 Toxoplasmosis
- PE-597 Traveler's Diarrhea (TD)
- PE-599 Trichinosis



PE 231



PE 929

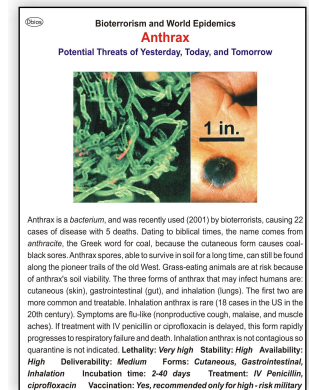
World Epidemics Charts

Thick Laminated both sides & attached with Plastic Strips **Size 20"x26"**
Thick Laminated & Framed on NU-Wood Board **Size 20"x26"**
Showing symptoms, Modes of Exposure, Treatment and the availability of the pathogens.

or

All Charts Also Available Size: 30"x40" Laminated & Fitted with Plastic Rollers

- | | | |
|-----------------------------------|----------------------------------|-------------------------------|
| 1. Anthrax | 15. H.I.V. | 27. Streptococcus |
| 2. Avian flu | 16. Influenza | 28. Tuberculosis |
| 3. Malaria | 17. Legionnaire's disease | 29. Tularemia |
| 4. Small pox | 18. Lyme's disease | 30. Typhus |
| 5. West nipe virus | 19. Mad cow disease & glanders | 31. Aflatoxins |
| 6. Botulism | 20. Melioidosis | 32. Cjd disease |
| 7. Brucellosis | 21. Plague | 33. Chemical agent |
| 8. Cholera | 22. Pneumonia | 34. Dirty bomb |
| 9. Dengue & yellow fever | 23. Q-fever | 35. Nuclear explosion |
| 10. Shigella dysenteriae bacteria | 24. Rocky mountain spotted fever | 36. Ricin |
| 11. Ebola | tick-borne | 37. Paralytic shellfish toxin |
| 12. E.coli | 25. Salmonella-credit | 38. T-2 mycotoxin |
| 13. Encephalitis | 26. Staphylococcus | 39. Tetrodotoxin |
| 14. Hantavirus | | 40. Stachybotrys |

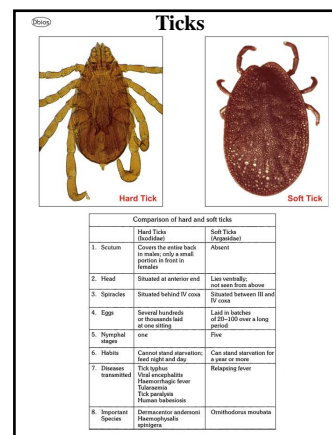


1. Anthrax

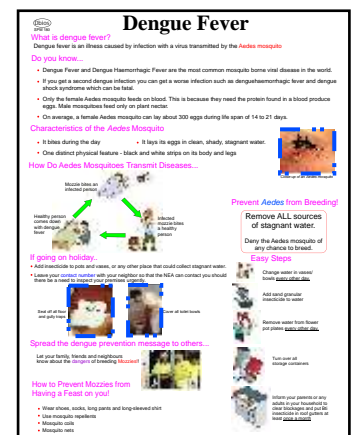
SPM Charts

Thick Laminated both sides & attached with Plastic Strips **Size 20"x26"**
Thick Laminated & Framed on NU-Wood Board **Size 20"x26"**

- | | |
|---------------------------|--|
| SPM 156. Sand Fly | SPM 170. Deep Well |
| SPM 157. Tsetse Fly | SPM 172. Slow Sand Filter |
| SPM 158. Louse | SPM 173. Rapid Sand Filter |
| SPM 159. Rat Flea | SPM 177. Bore Hole Laterine |
| SPM 160. Black Flu | SPM 179. Septik Tank Laterine |
| SPM 162. Hard tick | SPM 180. Dengu Fever |
| SPM 163. Soft Tick | SPM 181. Cholera |
| SPM 164. Trombuculid mite | SPM 182. Color coding for waste containers |
| SPM 165. Itch Mite | SPM 183. Biomedical waste |
| SPM 166. Cyclops | SPM 184. Categories of Waste |
| SPM 168. Sanitary Well | |



SPM 162



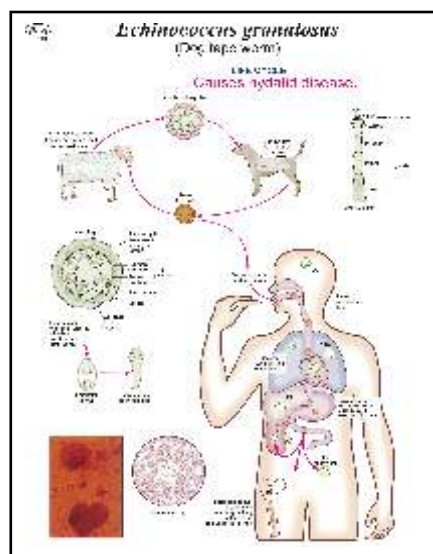
SPM 180

Parasitology Charts

Thick Laminated both sides & attached with Plastic Strips
Thick Laminated & Framed on NU-Wood Board

Size 20"x26"
Size 20"x26"

- | | | | |
|---------|--|---------|--|
| CH 1901 | LC <i>Enterobius vermicularis</i> (thread or pin worm) | CH 1934 | LC <i>Giardia intestinalis</i> (g.lamblia) |
| CH 1902 | LC <i>Trichuris trichiura</i> (whip worm) | CH 1935 | LC <i>Chilomastix mesnili</i> |
| CH 1903 | LC <i>Ascaris lumbricoides</i> (round worm) | CH 1936 | LC <i>Balantidium coli</i> |
| CH 1904 | LC <i>Ancylostoma duodenale</i> (hook worm) | CH 1937 | LC <i>Toxoplasma gondii</i> |
| CH 1905 | LC <i>Strongyloides stercoralis</i> | CH 1938 | LC <i>Malaria parasite</i> |
| CH 1906 | LC <i>Trichinella spiralis</i> | CH 1939 | <i>Leishmania morphology & LC</i> |
| CH 1907 | LC <i>Wuchereria bancrofti</i> (filariasis) | CH 1940 | Stages of the <i>Trypanosomatidae</i> |
| CH 1908 | LC <i>Brugia malayi</i> | CH 1941 | <i>Trypanosomiasis</i> (African type) |
| CH 1909 | LC <i>Loa loa</i> (eye worm) | CH 1942 | <i>Trypanosomiasis</i> (South American type) |
| CH 1910 | LC <i>Onchocerca volvulus</i> (blinding worm) | CH 1943 | <i>Toxocara canis</i> - (dog round worm) |
| CH 1911 | LC <i>Dracunculus medinensis</i> (guinea worm) | CH 1944 | <i>Toxocara cati</i> (cat round worm) |
| CH 1912 | LC <i>Taenia solium</i> (pork tape worm) | CH 1945 | <i>Gnathostoma spinigerum</i> -morphology & LC |
| CH 1913 | LC <i>Taenia saginata</i> (beef tape worm) | CH 1946 | <i>Cutaneous larva migrans</i> (creeping eruption) |
| CH 1914 | LC <i>Hymenolepis nana</i> (dwarf tape worm) | CH 1947 | <i>Trichomonas species</i> |
| CH 1915 | LC <i>Hymenolepis diminuta</i> (rat tape worm) | | |
| CH 1916 | LC <i>Diphyllobothrium latum</i> (fish t worm) | | |
| CH 1917 | LC of such tape worm - sparganosis | | |
| CH 1918 | LC <i>Echinococcus granulosus</i> (dog t worm) | | |
| CH 1919 | LC <i>Enchinococcus multilocularis</i> | | |
| CH 1920 | LC <i>Schistosoma species</i> (blood fluke) | | |
| CH 1921 | LC <i>Clonorchis sinensis</i> , (oriental liver fluke) | | |
| CH 1922 | LC <i>Opisthorchis felineus</i> , (cat liver fluke) | | |
| CH 1923 | LC <i>Fasciola hepatica</i> (sheep liver fluke) | | |
| CH 1924 | LC <i>Fasciolopsis buski</i> | | |
| CH 1925 | LC <i>Heterophyes heterophyes</i> | | |
| CH 1926 | LC <i>Metagonimus yokogawai</i> | | |
| CH 1927 | LC <i>Paragonimus westermani</i> (lung fluke) | | |
| CH 1928 | LC <i>Isospora belli</i> | | |
| CH 1929 | LC <i>Cryptosporidium parvum</i> | | |
| CH 1930 | LC <i>Cyclospora cayetanensis</i> | | |
| CH 1931 | LC <i>Sarcocystis hominis</i> | | |
| CH 1932 | LC <i>Microsporidia</i> | | |
| CH 1933 | LC <i>Entamoeba histolytica</i> (causing amoebiasis) | | |



CH 1918

First Aid Charts

Thick Laminated both sides & attached with Plastic Strips
Thick Laminated & Framed on NU-Wood Board

Size 20"x26"
Size 20"x26"

OR

All Charts Also Available Size: 30"x40" Laminated & Fitted with Plastic Rollers

- | | | | |
|------|---|------|-----------------------------------|
| 6850 | Bite (Snake & Animal) | 6989 | Choking Adult |
| 6880 | How poisons Affect The Body | 6990 | Choking Child |
| 6885 | Action In An Emergency | 6991 | Choking Infant |
| 6888 | Burns | 6995 | CPR Adult |
| 6900 | Poisoning (Drug & Alcohol) | 6996 | CPR Children |
| 6901 | Poisoning (Food Plant and Fungi) | 6997 | Fracture |
| 6920 | Management of Asthma | 6998 | Roller Bandages |
| 6925 | Symptoms & signs of acute alcohol poisoning | 6999 | Triangular Bandages |
| 6950 | Types of Wounds | 7000 | Drowning |
| | | 7001 | Inhalation of Fumes |
| | | 7002 | Treatments of some common Poisons |



6888

Food & Nutrition Charts

Thick Laminated both sides & attached with Plastic Strips
Thick Laminated & Framed on NU-Wood Board

Size 20" x 26"
Size 20" x 26"

- 9776 Risk of obesity
- 9779 Weight Control
- 9894. Keys to Healthy Eating
- CH1352. Daily allowance of Vitamins (Infants, Children, Adolescent, Men, Women)
- CH 1352A Recommended Dietary allowances For Indians
- CH1353. Daily Allowance of Nutrients
- CH 1353A Some Nutrient-rich Foods-I
- CH 1353 B Some Nutrient-rich Foods-II
- CH 1353C Some Nutrient-rich Foods-III
- CH1354. Balance Diet for Preschool Children (1 to 6years)
- CH 1354a Balanced Diet For Adult Man (Sedentary)
- CH 1354B Balanced Diet for Adults - Sedentary
- CH 1354C Approximate Calorific Value Of Nuts, Salads And Fruits
- CH 1354G Approximate Calorific Value Of Some Cooked Preparations
- CH 1354D Vegetables And Fruits With High Calorie Value (>100 kcal)
- CH1355. Balance Diet for School Children (7 to 18 years)
- CH1356. Balance Diet for Normal Pregnant (Lactating Women)
- CH 1356A Portion Sizes And Menu Plan
- CH1357. Balance Diet for old people (over 60 years)
- CH1358. Height weight Table for Normal Adults (Man & Women)
- CH1359. Reducing diets & weight maintenance diet for Adults.
- CH1360. Nutritive Value of Common Indian Recipes.
- CH 1360A Sample Meal Plan For Adult Man (Sedentary)
- CH 1360B Sample Meal Plan For Adult Woman (Sedentary)
- Ch1361. Recipes for Balance diets for Preschool Children/Pregnant & Nursing Women.
- CH1362. High & Low Calorie diets for Adults.
- CH1363. Diet for diabetic of Varying Ages with Normal Body weight. (Male & Female)
- CH1364. Diet & Daily menu for an adult suffering from High Blood Pressure.
- CH1365. Diet & Daily menu for an adult suffering from Renal Calculi.
- CH1366. Diet & Daily menu for an adult suffering from Chronic Gout.
- CH1367. Diet & Daily menu for an adult suffering from high Fever.
- CH1368. Diet & Daily menu for an adult suffering from Constipation.
- CH1370. Fibers
- CH1370A Vitamins Sources & Deficience
- CH1371. Fats
- CH1372. Proteins
- CH1373. Minerals
- Ch1374. Carbohydrates
- CH 1375 Importance Of Diet During Different Stages of Life
- CH 1377 Exercise And Physical Activity
- CH 1378 Energy Costs Of Physical Activities
- CH 1382 Drinking Water Standards
- CH 1383 WHO New Growth Standards Standard Deviation
- CH 1384 B.M.I. Anthropometric Standards
- CH 1385 Food Sanitation



9894

Food & Nutrition
(Colored Transparency)
(Set of 50)

SOME NUTRIENT-RICH FOODS-I			
Nutrients	Food Groups	Foods	Nutrient Content <i>Unit: 100 g edible portion</i>
ENERGY	Cereals and Tubers Nuts and Oilseeds	Rice, wheat and tapioca Almond, cashewnut, dry coconut and groundnut	340 Kcal 600 Kcal
	Vegetable oil, ghee and Vanaspathi		900 Kcal
PROTEIN	Pulses and Legumes Nuts and Oilseeds	Bengalgram, blackgram, greengram, lentil and redgram Groundnuts, cashewnuts and almond	22 g 23 g
	Fish Meat and Poultry	Meat Egg white	20 g 22 g
	Milk products	Cheese, khoa, skimmed milk powder (cow) and whole milk powder (cow)	11 g 30 g
BETA-CAROTENE	Leafy vegetables	Ambat chukka, coriander leaves, pomaganti, spinach, leaves, mint, radish leaves	2-6 mg
	Other vegetables	Some other leafy vegetables like aghika, amaranth, sury leaves, fennugreek leaves and gogoi	7-15 mg
	Fruits	Pumpkin leaves and green chillies Carrot Ripe mango Papaya	4 mg 6.5 mg 2.0 mg 0.9 mg
FOLIC ACID	Green leafy vegetables	Amaranth,ambat chukka, mint and spinach	120 mg
	Pulses	Bengalgram, blackgram, greengram and redgram	120 mg
	Oilseeds	Gingelly and soyabean	180 mg

CH 1353A

SCIENTIST/MEDICAL PROFESSIONAL PORTRAITS

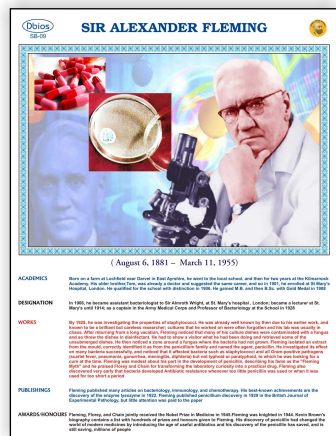
Thick Laminated both sides & attached with Plastic Strips
Thick Laminated & Framed on NU-Wood Board

Size 20"x26"
Size 20"x26"

or

All Charts Also Available Size: 30"x40" Laminated & Fitted with Plastic Rollers

- Dhanwantri
- Iswar Chander Vidyasagar
- Mother Teresa
- M.K. Gandhi
- Nightingale
- Swami Dayanand
- Swami Vivekanand
- SB 08. Aristotle
- SP 1. Hippocrates (460-377B.C.)
- SP 2. William Harvery (1578-1657)
- SP 4. Prof. B.K. Anand (1917)
- SP 11. Louis Pasteur (1822 - 1895)
- SP 28. Galen
- SP 40. Charak & Susruta
- SP 41. Sir Alexander Fleming
- SP 45 Anton van LEEUWENHOEK
- SP 49. Edward JENNER (1749 - 1823)
- DPP 15. Rudolf Ludwig Karl Virchow



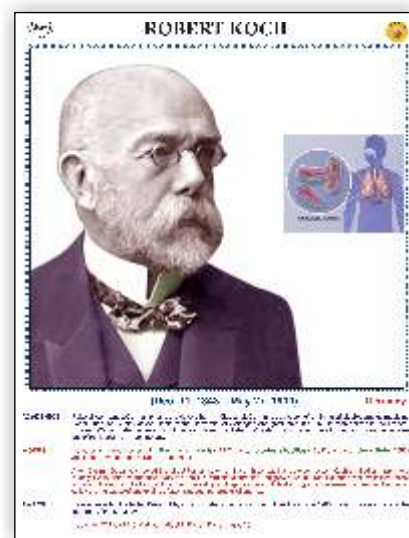
SP 41

STALWARTS OF HOMEOPATHY

1. Dr. Samuel Hahneman (Father of Homeopathy)
2. Dr. Babu Rajendralal Butta
3. Dr. Constantine Hering
4. Dr. Cyrus Maxwell Boger
5. Dr. Herbert A. Robert
6. Dr. J.H. Allen
7. Dr. Jemes Tyler Kent
8. Dr. Mahendralal Sarkar
9. Dr. Margaret Lucy Tyler
10. Dr. Stuart Close
11. Dr. Carroll Dunham
12. Dr. Clemens Von Boeninghausen
13. Dr. Ernest Farrington
14. Dr. Eugene B. Nash
15. Dr. Henry C. Allen
16. Dr. John Henry Clarke
17. Dr. Richard Hughes
18. Dr. Robert Ellis Dudgeon
19. Dr. Timothy Field Allen
20. Dr. William Boericke

NOBEL PRIZE WINNERS

Year	Name	Field
1902	Ronald ROSS	MALARIA
1905	Robert KOCH	TUBERCULOSIS
1951	Max THEILER	YELLOW FEVER
1954	John Franklin ENDERS	POLIOMYELITIS VIRUSES
1966	Peyton ROUS	TUMOUR-INDUCING VIRUSES
1969	Max DELBRUCK	GENETIC STRUCTURE OF VIRUSES
1969	Alfred D. HERSHEY	GENETIC STRUCTURE OF VIRUSES
1969	Salvador E. LURIA	GENETIC STRUCTURE OF VIRUSES
1975	David BALTIMORE	TUMOUR VIRUSES
1975	Howard Martin TEMIN	TUMOUR VIRUSES
1975	Renato DULBECCO	TUMOUR VIRUSES



Robert KOCH

Testing Kit

Testing Kit

S.No	Name of Equipment	Qty.
1	Barometer, Fotin	1
2	Filter, Pasteur chamberland, complete set	1
3	Filter, Berke feld Make: Standard	1
4	Hydrometers, spirit	3
5	Hydrometers, Milk	3
6	Hydrometers wet & dry BULB	1
7	DBIOS-54 INCUBATORS BACTERIOLOGICAL Chamber size in mm/Inches No. of Capacity H D W Shelves (Approx.)	1
	d) 450 x 450 x 450 (18" x 18" x 18") 2 95 ltrs.	1
8	Specimen jars Size mm.	30
	250 x 250 x 120 mm	
	200 x 150 x 100 mm	
	250 x 165 x 140 mm	
	200 x 125 x 125 mm	
	360 x 150 x 100 mm	
	280 x 210 x 104 mm	
	300 x 170 x 90 mm	
	150 x 150 x 60 mm	
	150 x 120 x 90 mm	
	150 x 90 x 60 mm	
	Make : Standard	
9	Charts, (Set Of 50 charts) Diagrams, Each Models, Each Slides (Set Of 100 slide)	Model 80 Charts 50
10	Balance Analytical 200 gm Make : Standard	2
11	Balance for weighing food stuff capacity 2 kg. Make : Standard	3
12	Dbios-152 MEDICO/CLINICAL CENTRIFUGE a) 8 x 15 ml tubes. OPTIONAL: Automatic 0-60 minutes timer.	1
15	Weighing machine adult Make : Standard	8
16	Baby weighing machine Make :Standard	3
17	Salter's Baby weighing machine Make : Standard	4
18	Herpenders Callipers (for skin fold thickness)	4
19	Height measuring stand	4
20	Refrigerator :9 cu.ft. DBIOS-88 DEEP FREEZER (Chest type & Vertical) Capacity : 10 cuft. VERTICAL	5
21	Ice Lined Refrigerator (I.L.R) at Helath center)	1
22	Ice Lined Refrigerator (ILR) 6cuft DBIOS-30 STUDENT DISSECTING MICROSCOPE:	40

S.No	Name of Equipment	Qty.
23	Dbios -CBM12A : ADVANCED BINOCULAR \CO-AXIAL RESEARCH MICROSCOPE: (With LED Light and inbuilt battery backup) Achromatic Objectives:4x/5x,10x,40x/45x, (SL) & 100x (SL) Oil immersion Eye Piece : WF.10x (Pair) Eye Pieces : 5x (Pair) Huygenian	3
	Packed in Thermocol and Wooden Box	
24	T.V. and DVD player	4
25	Autoclave (Can be shared with Pathology/ Microbiology department)	1
	DBIOS-81 AUTOCLAVE (Vertical) Double Wall Chamber size in mm & load: Capacity Inner Outer Dia xDepth Load (Approx.) S.Steel	
	b)300x 500 mm 3 KW 40 ltrs.	1
26	Computer with printer, scanner and photocopier and Internet facility	5
27	Vehicles for transport of students/interns/faculty/ paramedical staff to the RHTC and UHTC	2 Buses
28	Multimedia Projector with Screen Make :Standard	2
29	Public Address system (2 portable for field based activities and one each for RHTC & UHTC)	4 Sets
30	Chloroscope Make :Standard	10
31	Horrock's Apparatus Make :Standard	3
32	MUAC tapes Make :Standard	10
33	Haemoglobinometer (Imported) Make :Standard	5
34	BP Apparatus (Digital) Make :Standard	10
35	Stethoscope Make :Standard	10
36	Kata Thermometer Make :Standard	3
37	Globe Thermometer Make :Standard	3
38	Anemometer Make :Standard	4
39	Sound level meter Make :Standard	4
40	Soil testing kit Make :Standard	1

Testing Kit

S.No	Name of Equipment	Qty.
41	Water sampling bottle from any depth Make :Standard	1
42	Needle Shredder DBIOS-101 SYRINGE NEEDLE DESTROYER	3
43	Vaccine carrier Make :Standard water testing kit DBIOS-E26 WATER AND SOIL ANALYSIS KIT (7 parameter)	5 1
44	Protective devices for occupational safety	3 sets
45	Ear muffs Make :Standard	1
46	Ear plugs Make :Standard	1
47	Safety helmet Make :Standard	1
48	Goggles Make :Standard	1
49	Safety boots Make :Standard	1
50	Swine flu kit Make :Standard	1
51	Gloves Make :Standard	1
52	Triple layer surgical mask Make :Standard	1
53	High efficiency mask Make :Standard	1
54	Long sleeved cuffed gown Make :Standard	1
55	Protective eye wear Make :Standard	1
56	Cap Make :Standard	1
57	Disposable delivery kit Make :Standard	1
58	Treatment kits as per national health programs Make :Standard	3 each

S.No	Name of Equipment	Qty.
59	Iodine testing kit Make :Standard	10
60	Glucometer Make :Standard	10
61	Slide set for entomology Imported Make :Standard	5
62	Mosquito catching kit Make :Standard	4
63	Clinical Thermometer Make :Standard	10
64	Sling psychrometer Make :Standard	3
65	Solar radiation thermometer Make :Standard	3
66	Treatment kits as per National Health Programs Make :Standard	4 each
67	Iodine testing kit Make :Standard	10
68	Glucometer Make :Standard	10
69	Slide set for entomology Imported Make :Standard	5
70	First Aid Kit Make :Standard	1
71	Spirometer	3
72	Audiometry Make :Standard	1
73	Otoscope Make :Standard	1
74	Ophthalmoscope Make :Standard	1
75	Laptop	1
76	Portable X-ray (Maybe shared with other departments)	1
77	ECG(Maybe shared with other departments) Single channel Make :Standard	1

Also available Charts, Models & Slides

Forensic Department

Forensic Models 92
 Charts 94
 Digital Photograph 54
 Scientist Portraits 17

Difference between Burns and Scalds

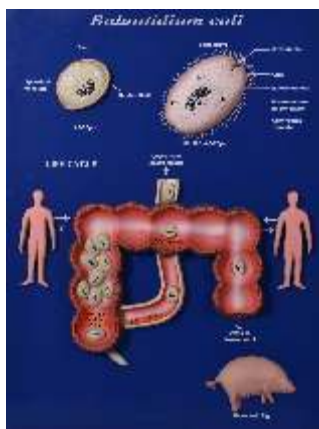
Assigning values of % to various parts of the skin surface is a useful method for estimating the percentage of burned skin.

BURNS	SCALDS
1. Causes heat	Mostly boiling water, steam, hot liquid
2. Appearance	Reddening, blisters, separation, bubbling, swelling
3. Depth	Usually depth 1 to 2
4. Healing of hair	Does not
5. Hair	It will show the site of application of heat
6. Moist Exudate	None
7. Spontaneous rupture of vesicles or exfoliating skin?	None
8. Swelling	None
9. Pain	Present when the skin is injured
10. Coloration	None
11. Chafes	None
12. Numbness/numbness	None
13. Healing	Compares to any
14. Itchiness	None

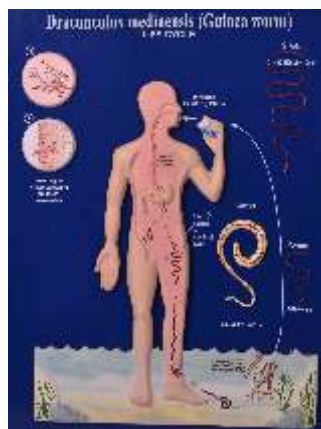


DFM 36A

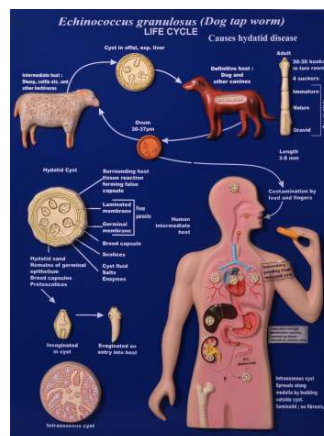
LIFE CYCLE MODELS



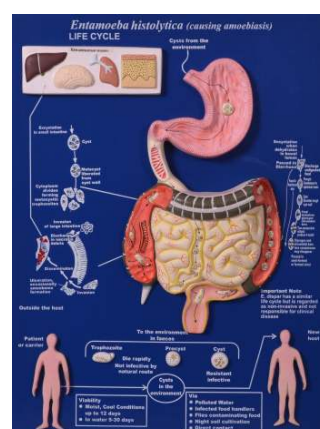
Balantidium Coli



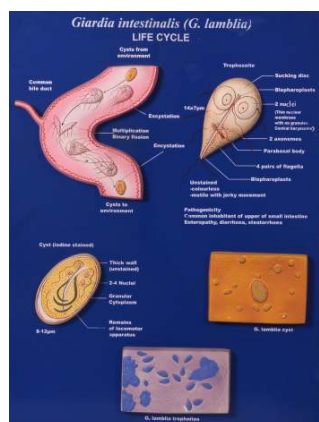
Dracunculus medinensis (Guinea worm)



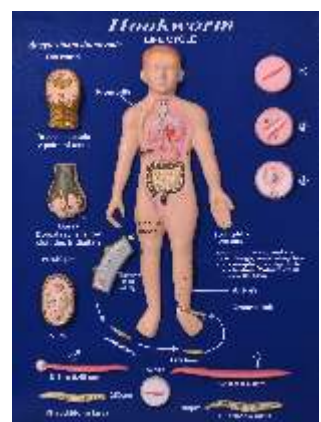
Echinococcus Granulosus (Dog tap Worm) L.F.



Entamoeba histolytica (causing amoebiasis)



Giardia intestinalis (G.lamblia)



Hookworm



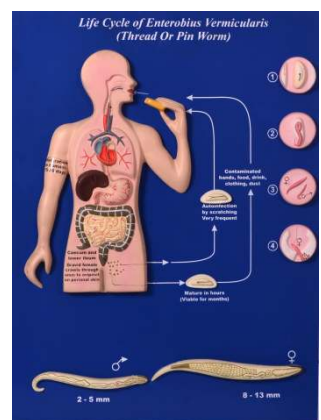
L.C. Fasciola hepatica (sheep liver fluke)



Leishmaniasis



Life cycle of Aedes (Stegomyia)



Life cycle of Enerobius Vermicularis

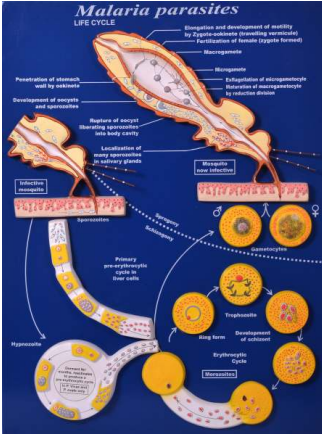


Life History of Anopheles

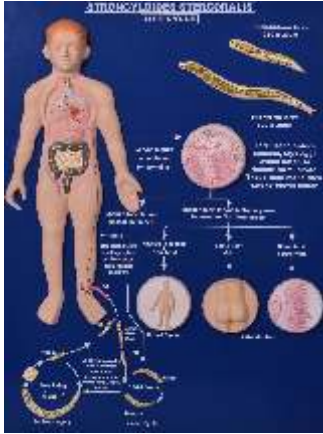


Life history of Culex

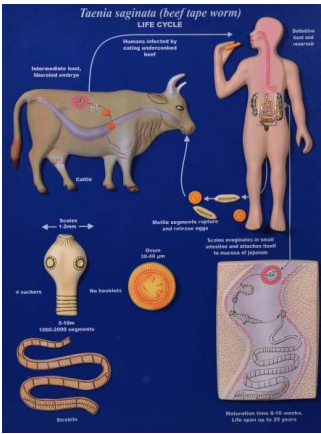
LIFE CYCLE MODELS



Malaria parasites



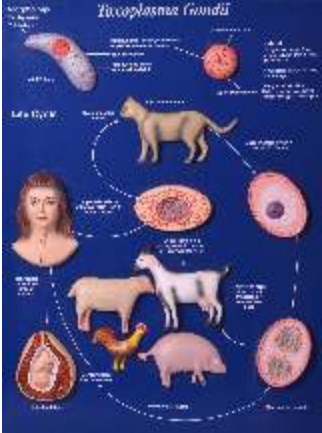
Strongyloides stercoralis



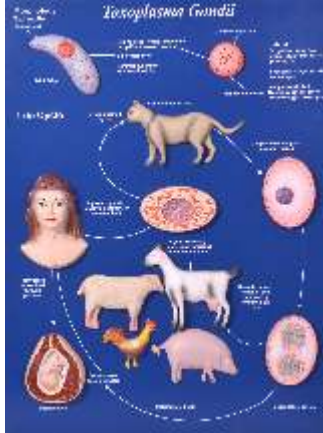
Taenia saginata (beef tapeworm)



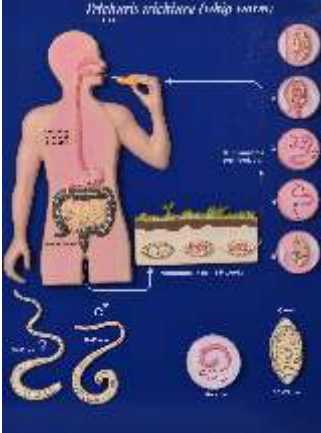
Taenia solium (pork tapeworm)



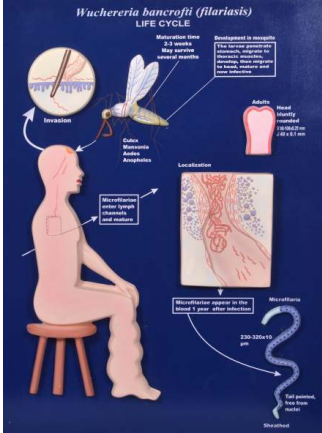
Toxoplasma Condii



Toxoplasma Gondii



Trichuris trichiura (whip worm)



Wuchereria bancrofti (filariasis)

MODELS ON HYGIENE & PUBLIC HEALTH



BORE HOLE LATRINE



IN-SANITARY WELL



RAPID SAND FILTER



DUG WELL LATRINE



SEPTIC TANK



SLOW SAND FILTER



SMOKELESS CHULHA

MALARIAL PARASITE MODELS



HOUSE FLY



HOUSE MOUSE



ITCH MITE



COMMON BED BUG



TSETSE FLY



GONORRHEA



TSETSE FLY



BODY LOUSE

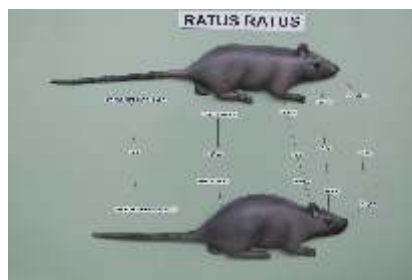
MALARIAL PARASITE MODELS



HOUSE RAT



RASHES ON FACE



RATUS RATUS



TONSIL



FILARIA ON LEG



DIPHThERIA



COCKROACH



TETANUS



HEAD LOUSE



POLIO



MEASLES



KALAAZAR

PATHOLOGY MODELS



PM 2 RHEUMATIC HEART DISEASE



PM 03 LUNG CANCER



PM 04 PNEUMONIA



PM 05 SARCOIDOSIS



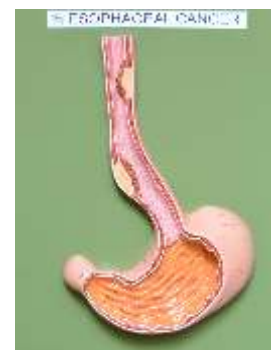
PM 6 TUBERCULOSIS



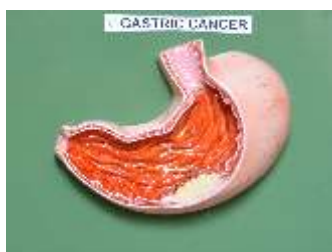
PM 7 APPENDICITIS



PM 8 COLORECTAL CANCER



PM 9 ESOPHAGEAL CANCER



PM 10 GASTRIC CANCER



PM 11 LIVER CANCER



PM 12 PANCREATIC CANCER



PM 14 BONE TUMORS



PM 15 OSTEOARTHRITIS



PM 16 OSTEOMYELITIS

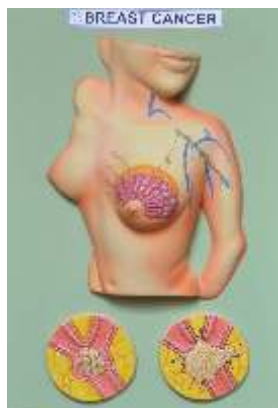


PM 17 THYROID CANCER

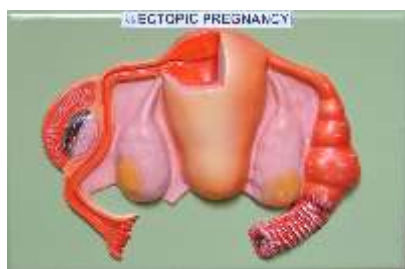


PM 18 BENIGN BREAST CONDITIONS

PATHOLOGY MODELS



PM 19 Breast cancer



PM 20 Ectopic Pregnancy



PM 21 Endometrial Cancer



PM 23 Fibroid Disease of Uterus



PM 24 Ovarian Cancer



PM 25 Ovarian Cysts



PM 26 Prostate Cancer



PM 27 Sexually Transmitted Infections



PM 28 Testicular Cancer



PM 29 Vaginitis



PM 30 Vulver Cancer



PM 32 Bladder cancer



PM 33 Renal Calculi



PM 34 Renal Cancer



PM 35 Atopic Dermatitis

PATHOLOGY MODELS



PM 36 Hearing Loss



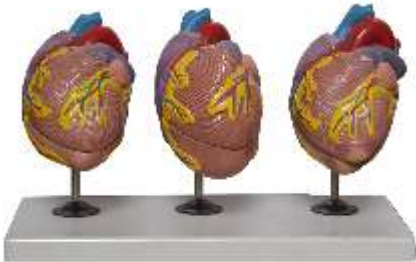
PM 37 Conjunctivitis



PM 38 Glaucoma



PM 39 Meniere's Disease



PM 2A Heart Disease



PM 2B Artery



PM 2C 4 Piece Artery



PM 03A Lung Pathology (cancer)



PM 03B Lung Pathology (COPD)



PM 6A 4 Piece Bronchus



PM 11A Liver with Pathology



PM 13A Stomach



PM 13B 4 Piece Colon Pathology



PM 13C Colon Common Pathology



PM 13D Esophagus



PM 17A Thyroid Diseases



PM 17B Obesity

PATHOLOGY MODELS



PM 19A Breast
(Common Pathology)



PM 23A Uterus Ovary



PM 28A Staging
of testis tumors



PM 34A Kidney



PM 34C Rectum



PM 35A Skin Pathology



PM 35C Skin Burn



PM 35D Skin cancer



PM 42 Teeth Common Pathology



PM 43 Diabetes