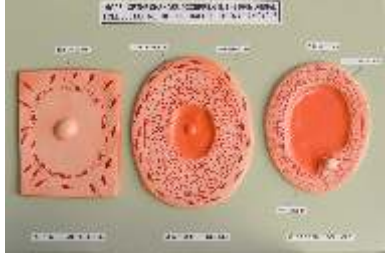


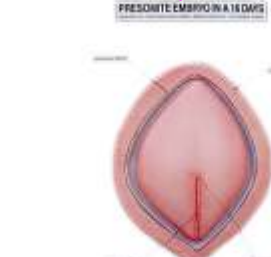
Human Models Anatomy

Dbios

EM 3 Changes Occuring In Primordial Follicle During 1st Half Of Ovarian Cycle



EM 17 Presomite Embryo in a 16 Days



EM 20 Human Embryo at 22 Days

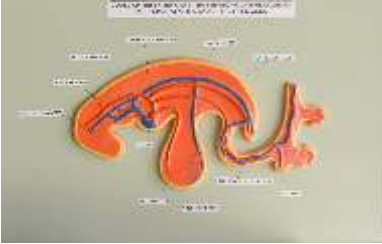


EM 34 Development of the Limb Buds



EM 24

Extra and Intra-embryonic Vasculization In an Embryo at The End of 3rd Week



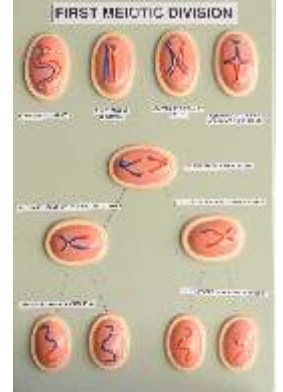
EM 25 Transverse sections through embryos at various stages of development to show the effect of the lateral folding on the endoderm lined cavity



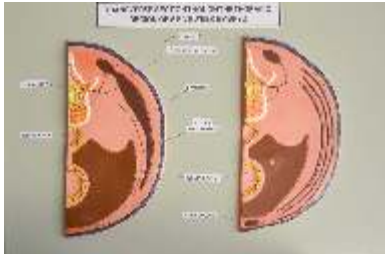
EM 48 Formation of the Uterus and vagina



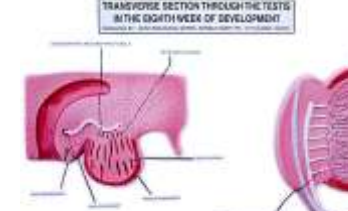
EM 1 First Meiotic Division



EM 37



EM 45 Transverse section through the testis in the eighth week of Development



EM 50 Indifferent stages of the External Genitalia



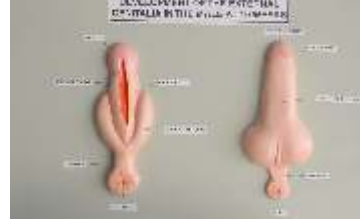
EM 77 Development of Ear



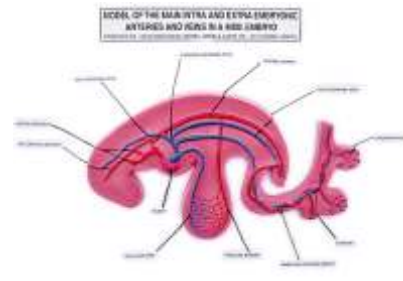
EM 38



EM 51 Development of the External Genitalia in the Male at 10 weeks



EM 58 Model of the main intra and extra embryonic arteries and veins in a 4mm Embryo



EM 74 Ventrolateral view of the optic cup and optic of a Six-week embryo



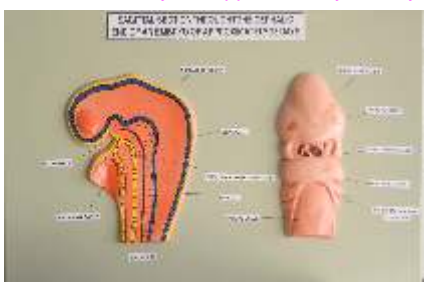
EM 75 Frontal aspect of the Face



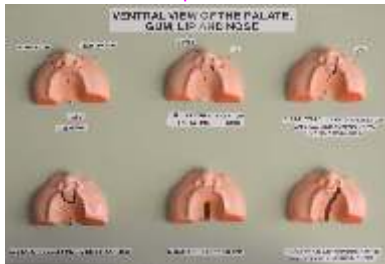
EM Series of Human Embryos to show the Development of the Pharyngeal Arches



EM Sagittal section through the cephalic end of an embryo of approximately 25 Days



EM 78 Ventral view of the palate Gum, Lip and Nose



GENERAL EMBRYOLOGY

- EM 1. FIRST MEIOTIC DIVISION
- EM 2. SECOND MEIOTIC DIVISION

OVULATION TO IMPLANTATION (FIRST WEEK OF DEVELOPMENT)

- EM 3. CHANGES OCCURRING IN PRIMORDIAL FOLLICLE DURING 1st HALF OF OVARIAN CYCLE
- EM 5. GRAAFIAN FOLLICLE, OVULATION, CORPUS LUTEUM
- EM 6. RELATIONSHIP OF FIMBRIAE AND OVARY
- EM 7. SCHEMATIC REPRESENTATION OF THE THREE PHASES OF OOCYTE PENETRATION
- EM 8. SCHEMATIC REPRESENTATION OF A SECTION THROUGH A HUMAN BLASTOCYST RECOVERED FROM THE UTERINE CAVITY AT APPROXIMATELY 4 ½ DAYS
- EM 9. SCHEMATIC REPRESENTATION OF THE EVENTS TAKING PLACE DURING THE FIRST WEEK OF HUMAN DEVELOPMENT
- EM 10. SCHEMATIC REPRESENTATION OF THE CHANGES TAKING PLACE IN THE UTERINE MUCOSA CORRELATED WITH THOSE IN THE OVARY

FORMATION OF THE BILAMINAR GERM DISC (SECOND WEEK OF DEVELOPMENT)

- EM 11. HUMAN BLASTOCYST 9 DAYS
- EM 12. HUMAN BLASTOCYST OF APP. 12 DAYS
- EM 13. HUMAN BLASTOCYST 13 DAYS

FORMATION OF THE TRILAMINAR GERM DISC (THIRD WEEK OF DEVELOPMENT)

- EM 14. DEVELOPMENT OF THE VILLUS
- EM 15. VILLUS AT THE END OF THE THIRD WEEK OF THE DEVELOPMENT
- EM 16. PRESOMITE EMBRYO AND THE TROPHOBLAST AT THE END OF THE THIRD WEEK

DERIVATIVES OF THE GERM LAYER

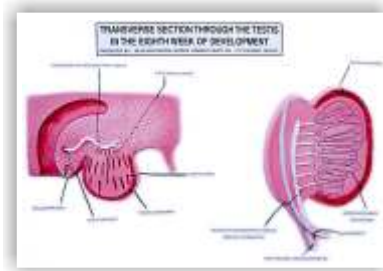
- EM 17. PRESOMITE EMBRYO OF A 16 DAYS
- EM 18. PRESOMITE EMBRYO OF A 19 DAYS
- EM 19. PRESOMITE EMBRYO OF A 20 DAYS
- EM 20. HUMAN EMBRYO AT 22 DAYS
- EM 21. 14 SOMITE EMBRYO (APP. 25 DAYS)
- EM 22. 25 SOMITE EMBRYO 28 DAYS
- EM 23. TRANSVERSE SECTIONS THE DEVELOPMENT OF THE MESODERMAL GERM LAYER DAY 17,19, 20,21 DAYS
- EM 24. EXTRA AND INTRA –EMBRYONIC VASCULARIZATION IN AN EMBRYO AT THE END OF 3rd WEEK
- EM 25. TRANSVERSE SECTION THROUGH EMBRYO AT VARIOUS STAGES OF DEVELOPMENT TO SHOW THE EFFECT OF THE LATERAL FOLDING ON THE ENTODERM-LINED CAVITY CONNECTION BETWEEN THE GUT AND THE YOLK SAC, THE CLOSED VENTRAL ABDOMINAL WALL AND THE GUT SUSPENDED FROM THE DORSAL ABDOMINAL WALL

DEVELOPMENT OF THE FETAL MEMBRANES AND PLACENTA

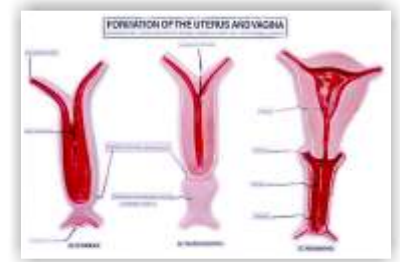
- EM 26. HUMAN EMBRYO AT THE BEGINNING OF THE SECOND MONTH OF DEVELOPMENT
- EM 27. STRUCTURE OF THE VILLI AT VARIOUS STAGES OF DEVELOPMENT
- EM 28. RELATION OF THE FETAL MEMBRANES & THE WALL OF THE UTERUS
- EM 29. PLACENTA IN THE SECOND HALF OF PREGNANCY
- EM 30. FULL TERM PLACENTA
- EM 31. DEVELOPMENT OF DIZYGOTIC TWINS ,EACH EMBRYO NORMALLY HAS ITS OWN AMNION, CHORION, & PLACENTA



EM-34



EM-45



EM-48

EM 32. RELATION OF FETAL MEMBRANES IN MONOZYGOTIC TWINS

EM 33. SKULL OF NEW BORN

EM 34. DEVELOPMENT OF THE LIMB BUDS AT 5,6,8 WEEKS

EM 35. FORMATION OF THE VERTEBRAL COLUMN AT VARIOUS STAGES OF DEVELOPMENT

MUSCULAR SYSTEM

EM 36. TRANSVERSE SECTION THROUGH A 4 WEEK EMBRYO SHOWING CELL OF MYOTOME & MIGRATION OF CELLS OF MYTOME

EM 37. TRANSVERSE SECTION THROUGH THE THORACIC REGION OF A FIVE WEEK EMBRYO

UROGENITAL SYSTEM

EM 38. TRANSVERSE SECTIONS THROUGH EMBRYOS AT VARIOUS STAGES OF DEVELOPMENT TO SHOW THE FORMATION OF THE NEPHRIC TUBULE AT 21 DAYS & 25 DAYS

EM 39. DEVELOPMENT OF THE RENAL PELVIS, CALYCES AND COLLECTING TUBULES OF THE METANEPHROS AT 6WEEKS, 7WEEKS, NEW BORN

EM 40. RELATIONSHIP OF HINDGUT AND CLOACA AT THE END OF 5th WEEKS

EM 41. ASCENT OF THE KIDNEY

EM 42. DIVISION OF THE CLOACA INTO THE UROGENITAL SINUS AND ANORECTAL CANAL AT THE END OF 5 WEEK, 7 WEEK & 8 WEEK

EM 43. DEVELOPMENT OF THE UROGENITAL SINUS INTO THE URINARY BLADDER

EM 44. RELATIONSHIP OF THE URETERS AND MESONEPHRIC DUCTS DURING DEVELOPMENT

EM 45. TRANSVERSE SECTION THROUGH THE TESTIS IN THE 8th WEEK OF THE DEVELOPMENT

EM 46. T. S. OVARY AT THE 7th WEEK OF DEVELOPMENT SHOWING THE DEGENERATION OF THE PRIMITIVE SEX CORDS AND THE FORMATION OF THE CORTICAL CORDS

EM 47. GENITAL DUCTS IN THE FEMALE AT THE END OF THE SECOND MONTH OF DEVELOPMENT

EM 48. FORMATION OF THE UTERUS AND VAGINA

EM 49. FORMATION OF THE UTERUS AND VAGINA AT VARIOUS STAGES OF DEVELOPMENT

EM 50. INDIFFERENT STAGE OF THE EXTERNAL GENITALIA

EM 51. DEVELOPMENT OF EXTERNAL GENITALIA IN THE MALE AT 10 WEEKS

EM 52. DEVELOPMENT OF THE EXTERNAL GENITALIA IN THE FEMALE AT THE 5 MONTH AND IN THE NEW BORN

EM 53. DESCENT OF THE TESTIS, DURING THE 2nd MONTH, MIDDLE OF THE 3rd MONTH, 7th MONTH AND SHORTLY AFTER BIRTH

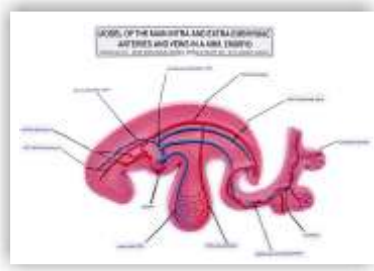
EM 54. TESTIS, EPIDIDYMIS, DUCTUS DEFERENS, AND THE VARIOUS LAYERS OF THE ABDOMINAL WALL WHICH SURROUND THE TESTIS IN THE SCROTUM

CARDIOVASCULAR SYSTEM

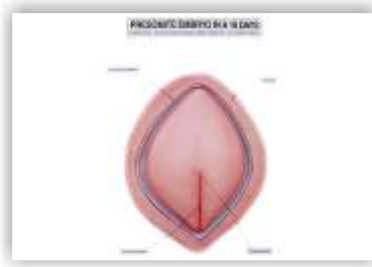
EM 55. SEPTATION OF VENTRICLE & BULBUS CORDIS

EM 56. FORMATION OF THE ATRIOVENTRICULAR VALVES AND CHORDAL TENDINEAE

EM 57. DEVELOPMENT OF THE UMBILICAL AND VITELLINE VEINS AT THE END OF 4th WEEK, 5th WEEK, IN THE 6th WEEK AND IN THE THIRD MONTH



EM-58



EM-17



EM-20

- EM 58. MAIN INTRA AND EXTRA-EMBRYONIC ARTERIES & VEINS IN A 4 mm. EMBRYO (END OF THE 4th WEEK)
- EM 59. MAIN COMPONENTS OF THE VENOUS SYSTEM IN A 4 MM. EMBRYO (END OF THE 4th WEEK)
- EM 60. HUMAN CIRCULATORY BEFORE BIRTH
- EM 61. HUMAN CIRCULATORY AFTER BIRTH

DIGESTIVE TUBE AND ITS DERIVATIVES

- EM 62. SAGITTAL SECTION THROUGH THE CEPHALIC END OF EMBRYO APP. 25 DAYS
- EM 63. SERIES OF HUMAN EMBRYOS TO SHOW THE DEVELOPMENT OF THE PHARYNGEAL ARCHES APP. 25 DAYS, 28 DAYS AND FIVE WEEKS
- EM 64. DEVELOPMENT OF THE PHARYNGEAL CLEFTS AND POUCHES
- EM 65. REPRESENTATION OF THE MIGRATION OF THE THYMUS, PARATHYROID GLANDS, AND ULTIMOBRANCHIAL BODY
- EM 66. DEVELOPMENT OF TONGUE (SET OF 4)
- EM 67. SUCCESSIVE STAGES IN THE DEVELOPMENT OF THE TRACHEA AND LUNGS AT THREE WEEKS, FOUR WEEKS, FIVE WEEKS & SIX WEEKS
- EM 68. THE PRIMITIVE GASTRO-INTESTINAL TRACT 25 DAYS
- EM 69. DEVELOPMENT OF LIVER
- EM 70. DEVELOPMENT OF STOMACH
- EM 71. DEVELOPMENT OF PANCREAS

CENTRAL NERVOUS SYSTEM

- EM 72. DORSAL VIEW OF A LATE PRESOMITE EMBRYO AND DORSAL VIEW OF HUMAN EMBRYO 18 DAYS & 20 DAYS
- EM 73. VARIOUS TYPE OF SPINA BIFIDA
- EM 74. VENTROLATERAL VIEW OF THE OPTIC CUP AND OPTIC STALK OF 6 WEEK EMBRYO

FACE, NOSE & PLATE

- EM 75. FRONTAL ASPECT OF THE FACE AT FIVE WEEK EMBRYO AND SIX WEEK, SEVEN WEEKS & TEN WEEKS (DEVELOPMENT OF FACE)
- EM 76. DEVELOPMENT OF EYE
- EM 77. DEVELOPMENT OF EAR
- EM 78. VENTRAL VIEW OF THE PALATE GUM, LIP AND NOSE

INTEGUMENTARY SYSTEM

- EM 79. DEVELOPMENT OF A HAIR AND A SEBACEOUS GLAND AT FOUR MONTHS, SIX MONTHS, NEWBORN
- EM 80. DEVELOPING MAMMARY GLAND AT THE THIRD AND EIGHTH MONTHS AND THE POSITIONS OF ACCESSORY NIPPLES
- EM 81. FORMATION OF THE TOOTH AT SUCCESSIVE STAGES OF DEVELOPMENT AT 8 WEEK, 10 WEEKS, 3 MONTHS, 6 MONTH, EIGHT MONTHS AND AFTER ERUPTION