


Customised Charts

Size 20"x30" Laminated & Mounted Framed on Board


20"

4"


College Logo & Name




INCOMPLETE BREECH




INCOMPLETE BREECH : EXTENDED LEGS. FEET BEING SOMEWHERE NEAR THE SHOULDERS.




FRANK BREECH, BOTTOM FIRST LEGS UP AROUND THE EARS



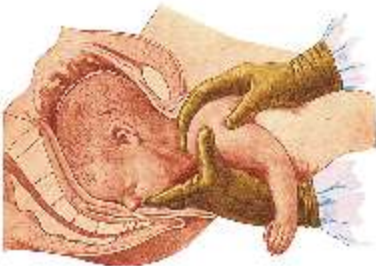
BREECH WITH EXTENDED LEGS
The breech is smaller than the complete breech and often the head, if has entered the brim easily, but having descended deeply into the cavity of the uterus is usually owing to the slight flexion of the legs interfering with breech traction, and the additional bulk of the feet hindering the head from entering the birth.



TRACTION OF THE ANTERIOR GROIN IN A SACRO-POSTERIOR POSITION OF THE BREECH WITH EXTENDED LEGS.
The breech has descended so deeply into the pelvis that it cannot be disengaged sufficiently to allow a leg to be brought down, so traction with a finger through the os is applied.

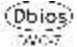


EXTENDED ARMS: BRINGING DOWN THE POSTERIOR ARM.
The child's body is swung as low as the mother's abdomen. The fingers of both hands are inserted into the fetal mouth with care. The arm and hand are raised and drawn across the child's face.



DELAY IN THE PELVIC CAVITY. JAW FLEXION AND SHOULDER TRACTION
The child's body is raised to the os. A finger passed into the mouth keeps the head flexed, while traction is applied to the shoulders by the fore and middle fingers over the cervix.

30"

 [Learning Resources in Nursing](#)



OBG

List No. 10 Charts & Models

W.e.f. 1st Aug, 2013

Size: 16"x22" Laminated Framed on Board
Size: 20"x26" Laminated Framed on Board

- GY 1 10 Real reasons not to get Pregnant
- GY 2 Infertility women
- GY 3 Method of Birth control
- GY 4 S.T.D
- GY 5 Death of immune system
- GY 6 Child Pregnancy Calculator
- GY 7 Intra uterine life
- GY 8 New Born Faces
- GY 9 Breast feeding

New OBG Charts

- GY 10 Self Breast Examination
- GY 11 Pregnancy & Birth
- GY 12 Very early sign of Pregnancy
- GY 13 Symptoms & causes of Anemia in Pregnancy
- GY 14 Various kinds of pregnancy complications
- GY 15 Ectopic Pregnancy symptoms
- GY 16 Pregnancy fitness plan
- GY 17 Exercise during pregnancy
- GY 18 Weight loss pregnancy
- GY 19 Back pain Exercises

Gynae Charts

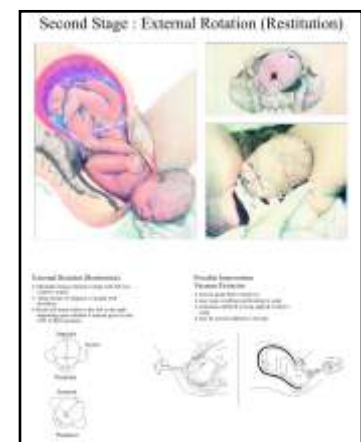
Model of condom
Model of Tubectomy
Model of Vasectomy

Size: 20"x26" Laminated
Laminated Framed on Board

- CH 1301 Female Reproductive Anatomy
- CH 1302 Male Reproductive Anatomy
- CH 1303 Conception
- CH 1305 First Trimester
- CH 1306 Second Trimester
- CH 1307 Third Trimester
- CH 1308 Fetal Presentation & Position
- CH 1309 Cervical Effacement & Dilatation
- CH 1310 Internal Exam During Labor
- CH 1311 Internal Rotation

Child Birth Classic Series

- CH 1312 Extension Beginning
- CH 1313 Fetal Head Emerging
- CH 1314 Crowning
- CH 1315 Extension Completes
- CH 1316 External Rotation : Restitution
- CH 1317 External Rotation : Shoulder Rotation
- CH 1318 Expulsion
- CH 1319 New Born
- CH 1321 Placental Separation & Expulsion
- CH 1322 New Born Appearance & Procedures



Size: 16"x22" Laminated Framed on Board
Size: 20"x26" Laminated Framed on Board

- DMC 1. Breast Changes in pregnancy
- DMC 2. Uterine changes in pregnancy showing height of uterus at different terms of pregnancy

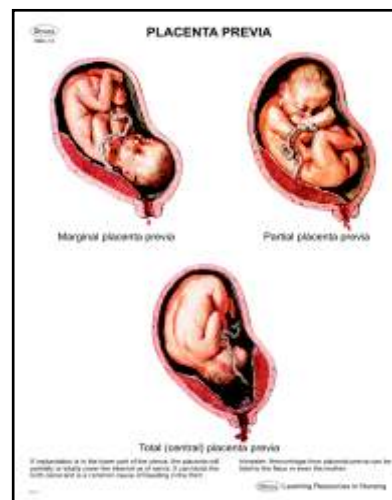
Stages of Labour

- DMC 3 First Stage
- DMC 4 Second Stage
- DMC 5 Third Stage

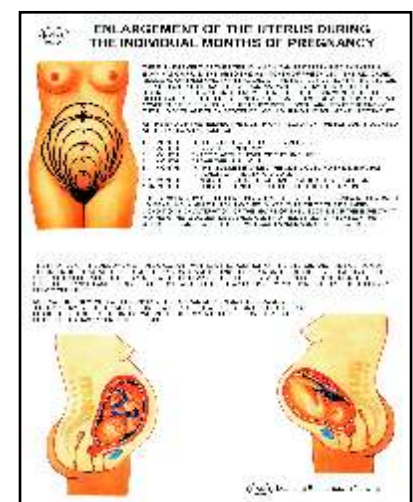
Breech presentation

- DMC 6. Complete breech
- DMC 7. Incomplete breech
- DMC 8. Foot presentation
- DMC 9. Shoulder presentation
- DMC 10. Face presentation
- DMC 11. Brow presentation
- DMC 12. Twin pregnancy
- DMC 13. Placenta praevia different stages
- DMC 14. Caput Succedaneum, Cephalhaematoma
- DMC 15. Congenital Malformation of New Born
- DMC 16. Variations of Cleft Deformity
- DMC 17. Spina Bifida
- DMC 18. Hydrocephalus
- DMC 19. Anencephalus

Midwifery Charts



DMC 13



DMC 2

Dbios

Gynae Charts & Models

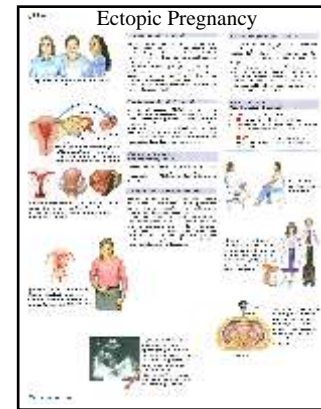
Size: 16"x22" Laminated Framed on Board
Size: 20"x26" Laminated Framed on Board

GYNECOLOGY AND OBSTETRICS

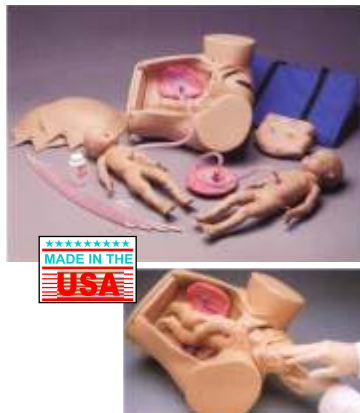
- PE-347 Bartholin Cyst
- PE-445 Breast Cancer
- PE-383 Breast Pain (Mastodynia)
- PE-349 Cervical Cancer
- PE-351 Cervical Dysplasia
- PE-353 Cervical Polyps
- PE-355 Cervicitis
- PE-357 Chancroid
- PE-359 Contraception
- PE-361 Cystitis
- PE-379 Dysfunctional Uterine Bleeding (Dub; Irregular Menses)
- PE-387 Dysmenorrhea (Menstrual Pain; Painful Periods)
- PE-363 Ectopic Pregnancy
- PE-365 Endometrial Cancer
- PE-367 Endometriosis
- PE-371 Fibrocystic Breast Changes
- PE-183 Galactorrhea
- PE-373 Genital Herpes (HSV-2)
- PE-375 Gestational Diabetes (GD)
- PE-415 Gonococcal Urethritis (Urethritis)
- PE-525 Gonorrhea
- PE-377 Granuloma Inguinale
- PE-189 Hirsutism
- PE-191 Hot Flashes

- PE-535 Human Papillomavirus (HPV) Infection
- PE-205 Infertility
- PE-381 Lymphogranuloma Venereum (LGV)
- PE-209 Menopause
- PE-385 Menorrhagia (Heavy Menstrual Bleeding)
- PE-417 Nongonococcal Urethritis (Urethritis)
- PE-213 Osteoporosis Female
- PE-389 Ovarian Cancer
- PE-391 Ovarian Cysts
- PE-393 Paget's disease of Breast
- PE-395 Painful Intercourse (Dyspareunia)
- PE-397 Pap Smear Abnormalities (Cervical Smear Abnormalities)
- PE-399 Pelvic Abscess
- PE-401 Pelvis Inflammatory Disease (PID)
- PE-403 Pelvis Organ Prolapse
- PE-405 Perirectal Abscess
- PE-221 Polycystic Ovarian Syndrome (PCOS)
- PE-407 Preeclampsia (toxemia; Pregnancy Induced Hypertension)
- PE-409 Premenstrual Syndrome (PMS)
- PE-369 Sexual Dysfunction

- PE-411 Syphilis
- PE-593 Toxic Shock Syndrome
- PE-415 Trichomoniasis
- PE-997 Urinary Incontinence (incontinence)
- PE-419 Urinary Tract Infection (UTI)
- PE-421 Uterine Cancer
- PE-423 Uterine Fibroids (Leiomyomas)
- PE-425 Uterine Prolapse (Prolapsed Uterus)
- PE-429 Vaginal Bacterial Infection
- PE-427 Vaginal Yeast Infection
- PE-431 Vulvar Cancer



IMP 100 Advanced Childbirth Simulator



IMP 100 A Labor Delivery Module



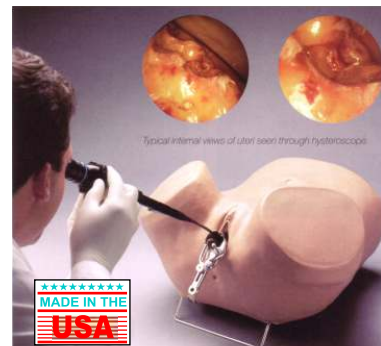
IMP 100 C GYN/AID Gynecologic Simulator.



IMP 152 ZOE Gynecologic Simulator.



IMP 153 Hysteroscopy Simulator.



IMP 154 Uterus II



IMP 155 Uterus



Dbios

Gynae Models

Dbios

IMP 150 Cervical Dilatation/Effacement Simulators



Stage one



Stage Two



Stage Three



Stage Four



Stage Five



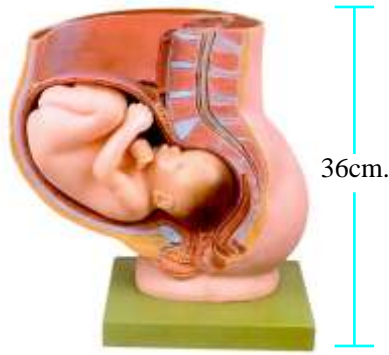
Stage Six

IMP 337 Female Genital Organs



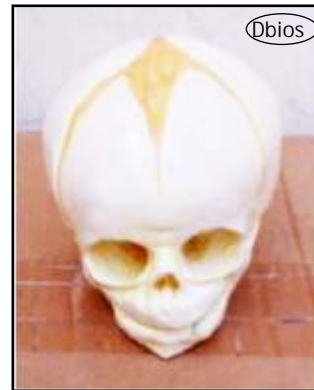
12cm.

IMP 353 Pelvis with Uterus in Ninth Month of Pregnancy



36cm.

AM 97A Foetal Skull



Dbios

AM 98. Human Female Pelvis



Dbios

AM 84A Child Birth Demonstration



AM 98A OBST. Pelvic with Fetal Skull



Am 83A Imported Series Demonstration Model of Pregnancy



(First Month)

(Second Month)

(Third Month)



(Fourth Month)

(Fifth Month)

(Sixth Month)



(Seventh Month)



(Twin fetus of second month)

AM 79A Imported Fertilization and Development of the Human Ovum Up to 3rd



AM 79B Imported Human Development of Embryo at End the 1st Month



AM 70B Imported Mammary Gland in Lactation



AM 70A Imported Mammary Gland in Resting Period



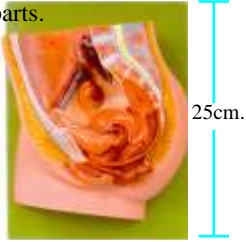
Dbios

Dbios

Gynae Models

IMP 336 Median Section of Female Pelvis

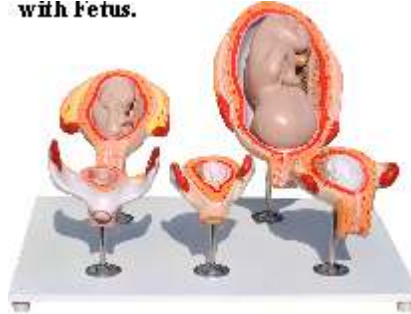
2 parts.



IMP 337A Female Inner Genital Organ



IMP 353B Stages of Pregnancy Uterus with Fetus.



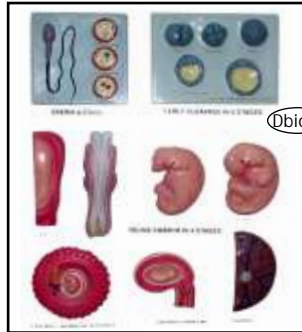
IMP 380B Fertilization Process



AM 83 Gradual Development of Uterus (Embryo Development)

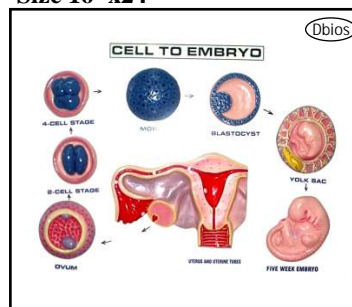


AM 83 C. Human Development Survey set
Size 16"x24"

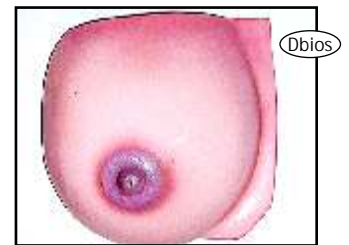


AM 83 B. Cell to Embryo

Size 16"x24"



AM82.BREAST In Pregnancy



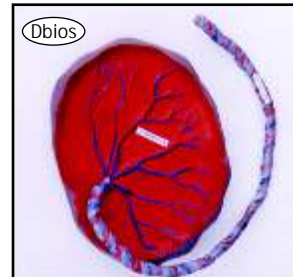
AM 89. Foetus Delivery Model



AM 70C Imported Mammary Gland in Lactation (8 Parts)



AM80. Placenta Foetal Surface
Size 16"x20"



AM 80A Imported Enlarged Model of Placenta

