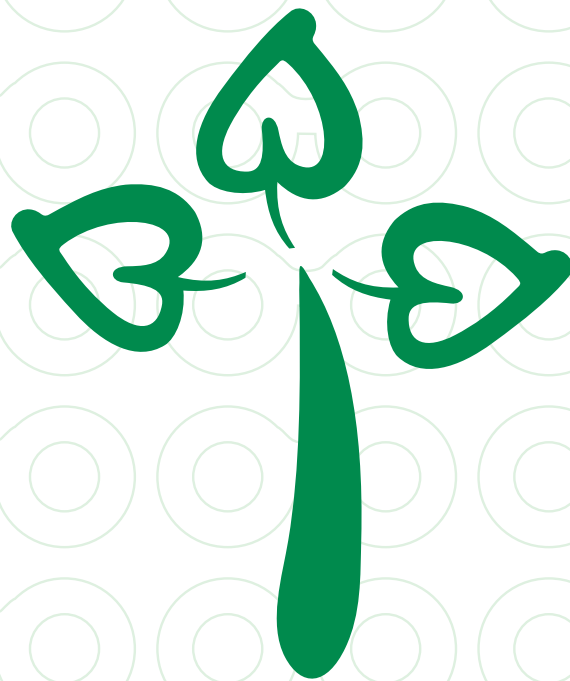


**List No. 17**  
w.e.f. June 1, 2015

# Ayurveda, **Dbios** Homeopathy Charts & Models



*Homeopathy Has No Expiration Date  
so Does*

*Dbios Educational Charts & Models  
Specially Designed for  
Homeopathy Medical Colleges Through out India*



# Models

# Anatomy

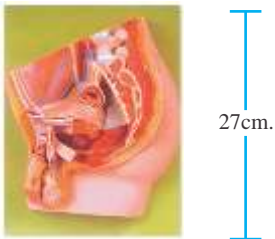
Dbios

- 1 TABLES WITH S.S TOP- SIZE- 6'x1'x2'x3'
- 2 TABLES WITH S.S TOP- Half standard size
- 3 MACHINES FOR SECTIONING BONES AND BRAIN.
- 4 35mm. SLIDE PROJECTOR  
Automatic Slide Projector German make 36 Slide magazine.
- 5 RAZOR HONE & STRAP  
a) Razor hone  
b) Razor strap
- 6 ROTARY MICROTOME
- 7 L. BLOCKS- Made of brass chromium plated
- 8 MICROSCOPE TWO EYE PC, 2 OBJECTIVE & (100x)
- 9 POLARIZING MICROSCOPE
- 10 SLEDGE MICROTOME- large section cutting
- 11 FREEZING MICROTOME
- 12 MORTAURY COOLER

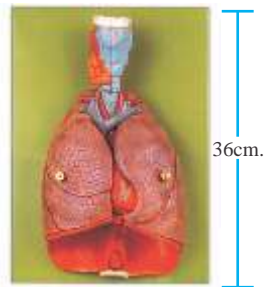
## Human Histology slides (USA) set of 100

## Human Histology slides (German) set of 62

**IMP 334** Median Section of Male Pelvis



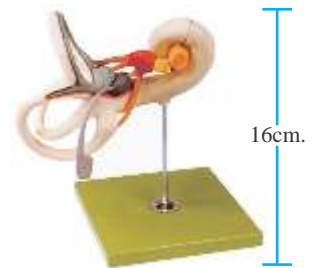
**IMP 309** Heart, lung and Larynx



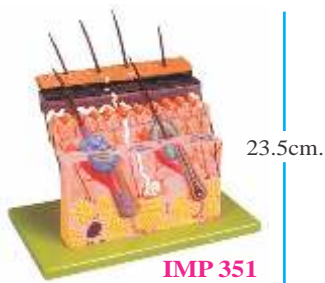
**IMP 319** Labyrinth with Auditory Ossicles and Tympanic Membrane



**IMP 320** Ear Labyrinth



**IMP 351** Skin Section



**IMP 316** Topography of the Orbit



**IMP 336** Median Section of Female Pelvis



Anatomy Model Different Types 50 Models Medical Grade Ask For Price

# Charts

# Anatomy



## ANATOMY CHARTS

Size : 20"X26" Laminated and attached with durable strips

OR Laminated and Framed on Board

All Charts Also Available Size: 30"x40" Laminated & Fitted with Plastic Rollers

1. Muscular System, 2. The Skeletal System, 3. The Nervous System, 4. The Autonomic Nervous System
5. The Vascular System, 6. The Lymphatic System, 7. The Respiratory System, 8. The Female Reproductive System
9. The Male Reproductive System, 10. The Digestive System, 11. The Urinary Tract, 12. The Endocrine System
13. The Brain, 14. The Heart, 15. The Eye, 16. The Liver, 17. The Kidney, 18. The Spinal Nerves, 19. The Hair
20. Shoulder & Elbow, 21. Hand & Wrist (Ligaments & Construction), 22. Hip & Knee, 23. Foot & Ankle
24. The Vertebral Column, 25. The Skull, 26. Head & Neck, 27. The Prostate, 28. The Skin, 29. Anatomy of the Heart
30. The Ear, 31. Pharynx & larynx, 32. Ligaments of The Joints, 33. Bone Anatomy, 34. Portal System
35. Fetal Circulatory, 36. Heart Condition, 37. Internal organs

### Identification of An Individual

- Ch 783. Morphological Features of the Three Primary Races Caucasians, Mongolians & Negroes
- Ch 784. Important Data For Identification of Person
- Ch 785. Determination of Sex From Physical / Morphological Features (primary & Secondary Sex Features)
- Ch 786. Ages of Eruption of Teeth
- Ch 787. Difference Between Temporary & Permanent Teeth
- Ch 788. Sex Difference Features In Skull
- Ch 790. Sex Difference Features In Mandible
- Ch 791. Sex Difference Features In Sacrum
- Ch 792. Sex Differentiating Features In Articulated Pelvis
- Ch 793. Difference Between Mandible In Infancy, Adult & old Age
- Ch 794. Difference Between Human & Animal Hair
- Ch 795. Estimation of Age

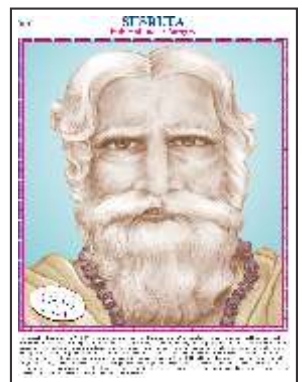
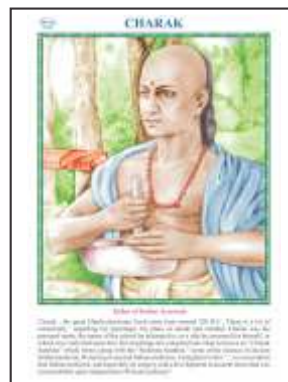
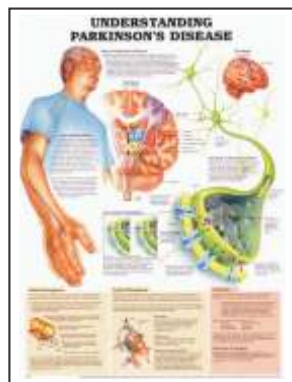
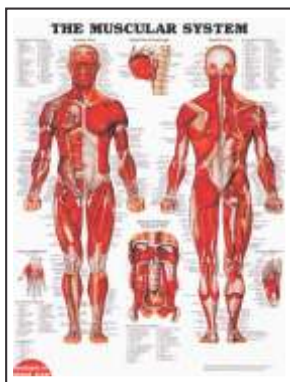
### diseases & disorders charts Available 50 Charts

1. Thyroid Diseases, 2. Migraines & Headaches, 3. Understanding Stroke 4. Understanding-Epilepsy
5. Understanding Asthma, 6. Understanding Hepatitis 7. Understanding Diabetes
8. Understanding Breast Disease, 9. Understanding Menopause, 10. Understanding Osteoporosis
11. Understanding Allergies, 12. Understanding Skin Cancer, 13. Understanding Cancer etc.....

## Embryology charts (2001 to 2041) 41 Charts

## Histology charts 150 Charts

### SCIENTIST/MEDICAL PROFESSIONAL PORTRAITS 50 Charts



# Models

# Anatomy/physiology



**IMP- 126 IMPORTED SKELETON (USA)**

**IMP.- 126 F**



**AM 103 Disarticulated Skeleton Near to Original**

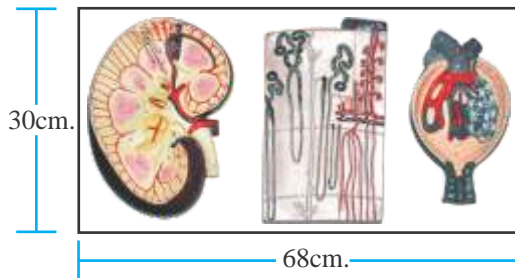


**IMP- 127 IMPORTED MR. SUPERSKELTON (USA)**



**IMP 333B Kidney, Nephron & Corpuscle.**

Rs. 8000/-



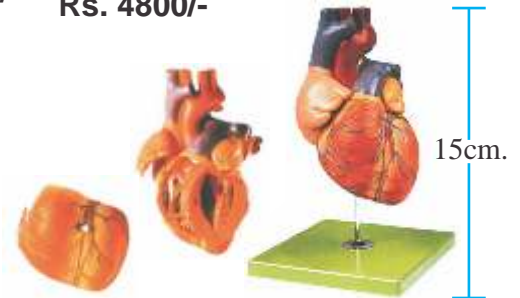
**IMP 334 Median Section of Male Pelvis**

Rs. 12000/-



**IMP 313 Anatomical Heart Model**

Rs. 4800/-



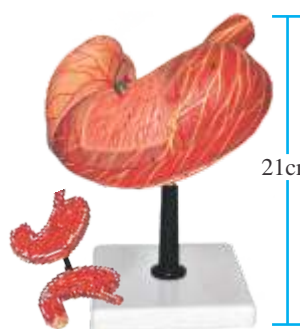
**IMP 304 Larynx with Tongue**

18cm.



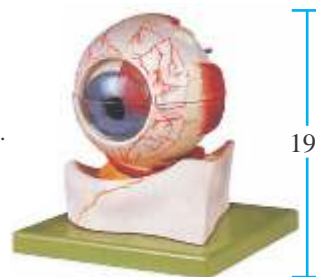
**IMP 309B Stomach on Stand**

21cm.



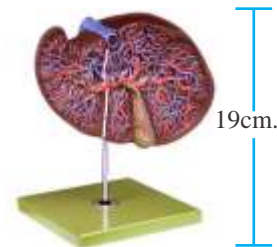
**IMP 314 Eyeball**

19cm.



**IMP 333 Liver and Gall Bladder**

19cm.

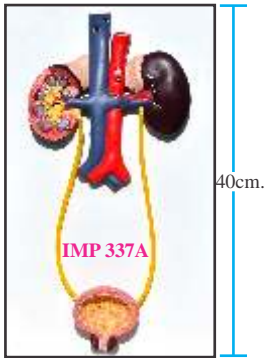


# Models

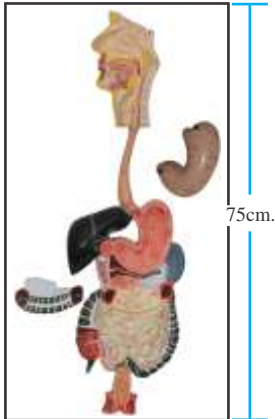
# Physiology

Dbios

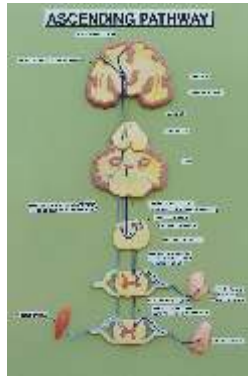
**IMP 337A**  
Human Excretory System



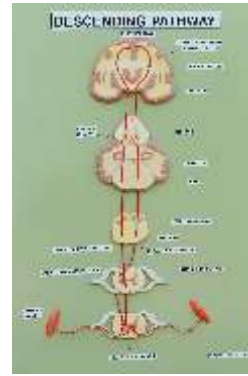
**IMP 309C**  
Digestive System



Ascending Pathway



Descending Pathway



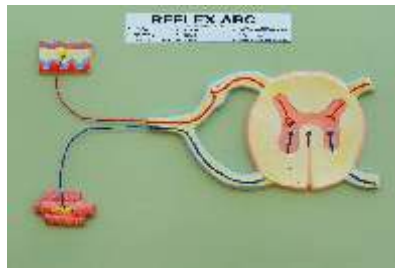
The Cerebellum



**AM-15** Spinal Cord with Nerves



Reflex Arc



Tonsils



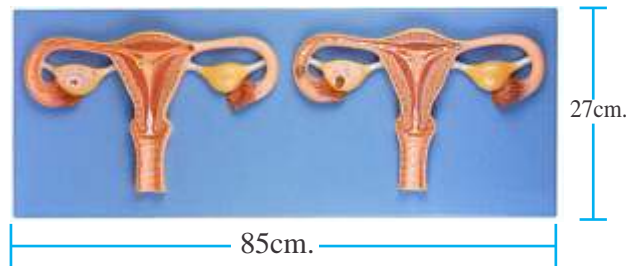
The Larynx



**IMP433**  
Liver, Pancreas, Duodenum



**IMP 380B**  
Fertilization process

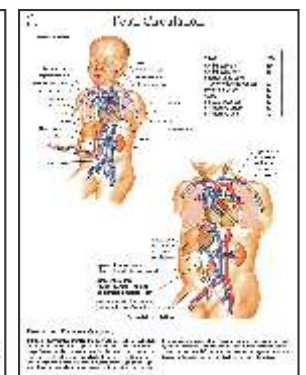
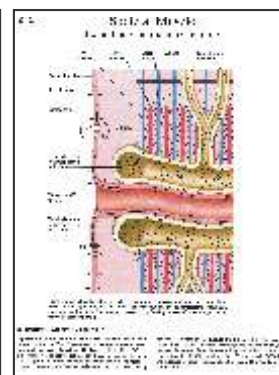
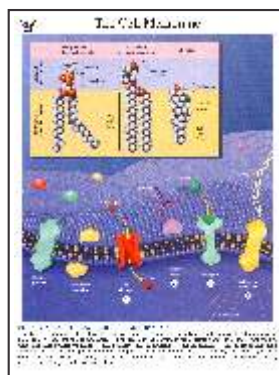


Size : 20"X26" Laminated and attached with durable strips

OR

Laminated and Framed on Board

- CELL PHYSIOLOGY (8 Charts)
- NEUROPHYSIOLOGY (39 Charts)
- MUSCLE PHYSIOLOGY (9 Charts)
- CARDIOVASCULAR PHYSIOLOGY (22 Charts)
- RESPIRATORY PHYSIOLOGY (29 Charts)
- RENAL PHYSIOLOGY (16 Charts)
- GASTROINTESTINAL PHYSIOLOGY (39 Charts)
- ENDOCRINE PHYSIOLOGY (29 Charts)



Physiology CHARTS (total Charts 191)

- 1 OPTHALMOLOGOSCOPE
- 2 OTORHINOLARYGOSCOPE
- 3 STETHOGRAPHS OR PNEUMOGRAPH
- 4 CENTRIFUGE HIGH SPEED
- 5 COLOUR PERCEPTION LANTERN EDRIDGE GREEN
- 6 INCUBATOR- STAGE- Imported- Heating
- 7 PERIMETER PRIESTLY SMITH S/LV. 984 B+T
- 8 SPIROMETER ORDINARY- POCKET MODEL
- 9 SPIROMETER -WATER
- 10 DOUGLAS BAGS
- 11 EROGRAPH MOSSIS
- 12 HAND GRIP DYNAMOMETER
- 13 PHYSIOGRAPH 3 CHANNEL - WITH TRANS DUCER & COUPLER
- 14 ELECTRONIC STIMULATOR

- 1 COMPLETE SET FOR EXPERIMENTAL PHYSIOLOGY.
  - a) Sharrington starting kymograph electrically driven
  - b) Kymograph stand
  - c) Inductorium/ Induction Coil
  - d) Pohl's commutator
  - e) Simple Key
  - f) Vibrating interruption
  - g) Muscle trough
  - h) Muscle Liver
  - i) Hook and Weight set 111 gm
  - j) Starling Heart Lever
  - k) Frog Board for dissection 7"x5"
  - l) Enamel tray 12"x10"
- 2 TETANUS SETS
- 3 PERFUSION CANNULE- sims for frogs heart
- 4 PERFUSION FUNNEL- for frogs heart
- 5 ELECTRIC MARKER SINGLE
- 6 ELECTRIC MARKER DOUBLE
- 7 ELECTRIC TIME MARKERS 100 sec.
- 8 VARNISHING OUTFITS- FOR LONG AND SHORT PAPER
- 9 LONG PAPER EXTENSION FOR KYMOGRAPH
- 10 SMOKING OUTFIT- with fume cupboard
- 11 ONOCOMETER SPLEEN
- 12 ONOCOMETER LEVER
- 13 ISOLATED ORGAN BATH/ SINGLE UNIT ORGAN BATH
- 14 OUTFLOW RECORDER
- 15 MEREY'S TAMBOUR
- 16 MAMMALIAN HEART PERFUSION APPARATUS
- 17 VOLUME RECORDER
- 18 STARLING HEART LUNGS APPARATUS/ B.M.R APPARATUS
- 19 OPERATION TABLE

# Instruments Biochemistry

Dbios

- 1 KJELDHAL APPARTUS- complete with burners
- 2 MICRO KJELDAHL APPARTUS
- 3 CHROMATOGRAPHY UNIT / TLC plate
- 4 CENTRIFUGE HIGH SPEED upto 13000 RPM
- 5 SPECTROSCOPES- WITH SCALE
- 6 GEL ELECTROPHORESIS APPARTUS
- 7 B.M.R. APPARATUS ARTHUR
- 8 FLAME PHOTOMETER With Na & K Filter Digital Model
- 9 CATHODE RAY OSCILLOGRAPH

## Biochemistry CHARTS (total Charts 252)

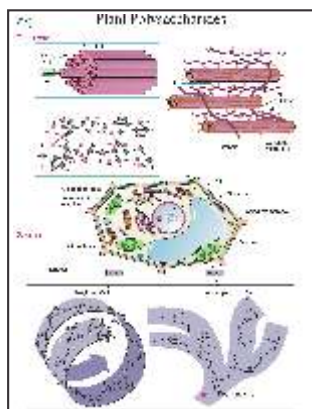
Size : 20"X26" Laminated and attached with durable strips

OR

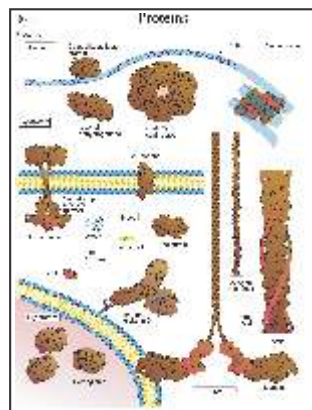
Laminated and Framed on Board

- Chemistry (7Charts)
- Physical chemistry (9 Charts)
- BIOMOLECULES**
  - Carbohydrates (6 Charts)
  - LIPIDS (6 Charts)
  - AMINO ACIDS (3 Charts)
  - PEPTIDES AND PROTEINS (8 Charts)
  - NUCLEOTIDE AND NUCLEIC ACID (4 Charts)
- METABOLISM ENZYMES (12 Charts)**
  - METABOLIC REGULATION (5 Charts)
  - ENERGY METABOLISM (14 Charts)
  - CARBOHYDRATE METABOLISM (6 Charts)
  - LIPID METABOLISM (6 Charts)
  - PROTEIN METABOLISM (6 Charts)
  - NUCLEOTIDE METABOLISM (3 Charts)
  - PORPHYRIN METABOLISM (2 Charts)
- ORGANELLES**
  - BASIC (4 Charts)
  - CYTOSKELETON (3 Charts)
  - MITOCHONDRIA (2 Charts)
  - BIOLOGICAL MEMBRANCES (6 Charts)
  - ENDOPLASMIC RETICULUM AND GOLGI APPARATUS (5 Charts)
  - MOLECULAR GENETICS (11 Charts)
  - GENETIC ENGINEERING (4 Charts)

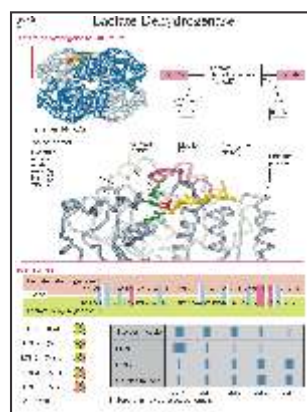
- TISSUSES and ORGANS**
  - DIGESTION (4 Charts)
  - BLOOD (10 Charts)
  - IMMUNE SYSTEM (6 Charts)
  - LIVER (8 Charts)
  - KIDNEY (5 Charts)
  - MUSCLE (4 Charts)
  - CONNECTIVE TISSUE (4 Charts)
  - BRAIN AND SENSORY ORGANS (6 Charts)
- NUTRITION**
  - NUTRIENTS (2 Charts)
  - VITAMINS (3 Charts)
- HORMONES**
  - Hormonal system (2 Charts)
  - LIPOPHILIC HOROMONES (3 Charts)
  - HYDROPHILIC HORMONES (4 Charts)
  - OTHER SIGNALING SUBSTANCES (2 Charts)
- GROWTH AND DEVELOPMENT**
  - CELL PROLIFERATION (6 Charts)
  - METABOLISM CHARTS (13 Charts)



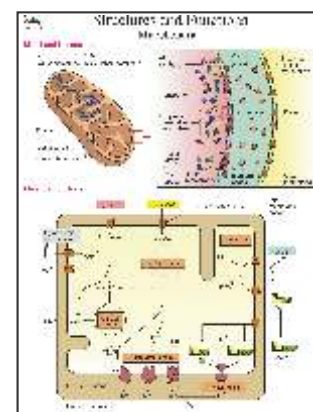
DBC 25



DBC 40



DBC 57



DBC 137

- 1 ROTARY MICROTOME
- 2 PHASE CONTRAST MICROSCOPE WITH DARK FIELD ATTACHMENT
- 3 ZOOM SLIDE PROJECTOR
- 4 ANAEROBIC APPARATUS
- 5 SLEDGE MICROTOME
- 6 AUTOMATIC TISSUE PROCESSOR
- 7 MICROPHOTOGRAPHIC APPARATUS- illuminating standing
- 8 COLONY COUNTER DIGITAL
- 9 SERUM INSPISSATOR- LAB MODEL
- 10 LOVIBOND CAMPARATOR - Imported U.K Make
- 11 PAPER ELECTROPHORESIS APPARATUS- Nitrogen Horizontal

## Dbios Pathology models

### CARDIOVASCULAR DISORDERS

- PM1 MYOCARDIAL INFRACTION
- PM2 RHEUMATIC HEART DISEASE

### RESPIRATORY DISORDES

- PM3 LUNG CANCER
- PM4 PNEUMONIA
- PM5 SARCOIDOSIS
- PM6 TUBERCULOSIS

### GASTROINTESTINAL DISORDERS

- PM7 APPENDICITIS
- PM8 COLORECTAL CANCER
- PM9 ESOPHAGEAL CANCER
- PM10 GASTRIC CANCER
- PM11 LIVER CANCER
- PM12 PANCREATIC CANCER
- PM13 ULCERS

### MUSCULOSKELETAL DISORDERS

- PM14 BONE TUMORS
- PM15 OSTEOARTHRITIS
- PM16 OSTEOMYELITIS

### IMMUNOLOGIC DISORDERS

- PM17 THYROID CANCER

### REPRODUCTIVE DISORDERS

- PM18 BENIGN BREAST CONDITIONS
- PM19 BREAST CANCER
- PM20 ECTOPIC PREGNANCY
- PM21 ENDOMETRIAL CANCER
- PM22 ERECTILE DYSFUNCTION
- PM23 FIBROID DISEASE OF UTERUS
- PM24 OVARIAN CANCER
- PM25 OVARIAN CYSTS
- PM26 PROSTATE CANCER
- PM27 SEXUALLY TRANSMITTED INFECTIONS
- PM28 TESTICULAR CANCER
- PM29 VAGINITIS
- PM30 VULVAR CANCER
- PM31 ACUTE RENAL FAILURE
- PM32 BLADDER CANCER
- PM33 RENAL CALCULI
- PM34 RENAL CANCER

### SKIN DISORDERS

- PM35 ATOPIC DERMATITIS

### SENSORY DISORDERS

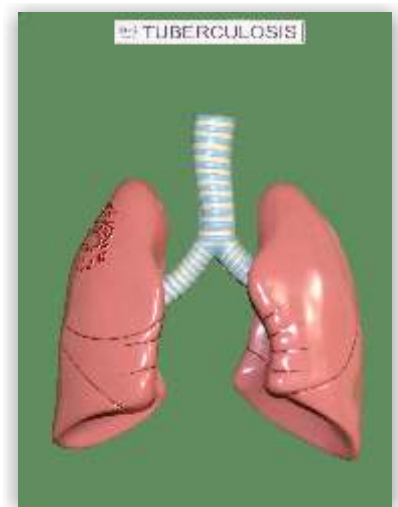
- PM36 HEARING LOSS
- PM37 CONJUNCTIVITIS
- PM38 GLAUCOMA
- PM39 MENIERE'S DISEASE
- PM40A HYPERTENSION; BRAIN
- PM40B HYPERTENSION; HEART
- PM40C HYPERTENSION; KIDNEY
- PM40D HYPERTENSION; ARTERY
- PM40E HYPERTENSION; EYE
- PM41A DIABETES TYPE II; HEART
- PM41B DIABETES TYPE II; KIDNEY
- PM41C DIABETES TYPE II; EYE
- PM41D DIABETES TYPE II; NEURON
- PM41E DIABETES TYPE II; FOOT
- PM41F DIABETES TYPE II; PANCREAS
- PM41G DIABETES TYPE II; ARTERY
- PM41H DIABETES TYPE II; BRAIN



PM 5  
SARCOIDOSIS



PM 24  
OVARIAN CANCER



PM 6  
TUBERCULOSIS



## Dbios PATHOLOGY MODELS

### CARDIOVASCULAR DISORDERS

- PM2A HEART DISEASE (CONGESTIVE, MYOCARDIAL INFRACTION)
- PM2B ARTERY
- PM2C ARTERY (NORMAL, FATTY STREAK, ATHEROMA & FIBROUS PLAQUE AND BLOCKAGE)

### RESPIRATORY DISORDES

- PM3A LUNG PATHOLOGY (CANCER, ASTHMA)
- PM3B LUNG (COPD, NORMAL)
- PM6A BRONCHUS (NORMAL, SWELLING, HYPERSECRETION & MUSCLE SPASM)

### GASTROINTESTINAL DISORDERS

- PM11A LIVER WITH PATHOLOGIES
- PM13A STOMACH (GASTRIC, DUODENAL ULCER)
- PM13B COLON PATHOLOGIES (4 STAGES)
- PM13C COLON (COMMON PATHOLOGY)
- PM13D ESOPHAGUS; NORMAL, BARRETT'S, HIATAL HERNIA, BARRETT'S WITH TUMOR

### MUSCULOSKELETAL DISORDERS

- PM16A LUMBER VERTEBRAE DEGENERATION (NORMAL, HERNIATED DISC, BONE/DISC DEGENERATION & ADVANCED OSTEOPOROSIS)
- PM16B STAGES OF OSTEOARTHRITIS (DEGENERATIVE JOINT DISEASE) 3 STAGES.

### IMMUNOLOGIC DISORDERS

- PM17A THYROID DISEASES (LYMPHOCYTIC THYROIDITIS, GRAVES DISEASE & PAPPILARY CARCINOMA)
- PM17B OBESITY; PEAR SHAPE, APPLE SHAPE

### REPRODUCTIVE DISORDERS

- PM19A BREAST (COMMON PATHOLOGY)
- PM23A UTERUS-OVARY (COMMON PATHOLOGY)
- PM26A PROSTATE (ENLARGE WITH HARD, IRREGULAR SURFACE & SEMINAL VESICLE INVOLVEMENT. INDICATING CANCER)
- PM28A STAGING OF TESTIS TUMORS (3 STAGES)

### PM34A DISEASED KIDNEY

### PM34B KIDNEY STONE

### PM34C RECTUM

### SKIN DISORDERS

- PM35A SKIN PATHOLOGY
- PM35B COMMON SKIN ACNE
- PM35C SKIN BURNS
- PM35D SKIN CANCER

### PM42 TEETH; COMMON PATHOLOGIES

- PM43 DIABETES; DIABETIC NEUROPATHY, RETINOPATHY, NEPHROPATHY, ATHEROSCLEROSIS



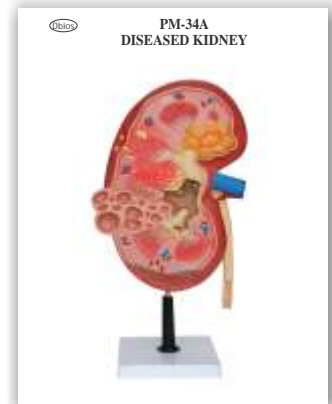
PM 2B  
ARTERY



PM 3B  
LUNG



PM-13A  
STOMACH



PM 34A  
DISEASED KIDNEY



## SCIENTIST/MEDICAL PROFESSIONAL PORTRAITS

Size : 20"x26" Laminated & Fitted with Plastic Strips

Size : 20"x26" Laminated & Framed on NU-Wood Board

SP 1. Hippocrates (460-377B.C.)

SP 28. Galen

SP 11. Louis Pasteur (1822 - 1895)

SP 40A. Charak

SP 40. Susruta

### FAMOUS NOBEL PRIZE WINNERS IN MEDICAL FIELD

DPP01 Guido Banti

DPP02 Thomas Hodgkin

DPP03 Mathew Baillie

DPP04 Givoanni Battista Morgagni

DPP05 Carl Rokitansy

DPP06 Sir Patrick Manson

DPP07 Santigo Ramony Y Cajal

DPP08 John Hunter

DPP09 E.H.Starling

DPP10 Julius Cohnheim

DPP11 Charles Robert Richet

DPP12 Sir Almroth Edward Wright

DPP13 Paul Grawitz

DPP14 Theodor Schwann

DPP15 Rudolf Ludwig Karl Virchow

DPP16 Thomas Burlow

DPP17 Sir Jonathan Hutchinson

DPP18 Pervical Pott

DPP19 George Nicholas Papanicolaou

DPP20 Thomas Addison

DPP21 Sir James Paget

DPP22 Theobald Smith

DPP23 Camillo Golgi

DPP24 Karl Landsteiner

DPP25 Max Schultze

DPP26 Sir Frederick Banting

# Charts

# Pathology

Dbios

Size : 20"x26" Laminated & Fitted with Plastic Strips  
Size : 20"x26" Laminated & Framed on NU-Wood Board

## CARDIOVASCULAR SYSTEM

Congenital Malformations (9 Charts)  
Atherosclerosis (2 Charts)  
Coronary Heart Disease (4 Charts)  
Hypertensive Cardiovascular Disease (3 Charts)  
Heart Failure (5 Charts)  
Diseases of the Aorta (3 Charts)  
Immunologic Diseases (6 Charts)  
Infections and Other Inflammatory Disease of the Heart (8 Charts)  
Cardiomyopathies and Metabolic Diseases (3 Charts)  
Valvular Heart Disease (3 Charts)  
Tumors of the Heart (2 Charts)  
Diseases of the Pericardium (2 Charts)  
Trauma (1 Charts)

## RESPIRATORY SYSTEM

Obstructive Lung Diseases (5 Charts)  
Restrictive Lung Diseases (7 Charts)  
Vascular Lung Diseases (1 Charts)  
Pulmonary Infectious Diseases (4 Charts)  
Tumors in the Lungs and the Pleura (7 Charts)

## GASTROINTESTINAL SYSTEM

Diseases of the Esophagus (4 Charts)  
Diseases of the Stomach (8 Charts)  
Diseases of the Small and Large Intestines (13 Charts)  
Bowel Obstruction (1 Charts)  
Tumors of the Small and Large Intestines (6 Charts)

## LIVER, GALLBLADDER, AND PANCREAS

Inflammatory Diseases of the Liver (10 Charts)  
Toxic and Immunologic Disorders of the Liver (2 Charts)  
Metabolic Diseases Involving the Liver (4 Charts)  
Primary Tumors of the Liver (2 Charts)  
Cholelithiasis and Cholecystitis (4 Charts)  
Tumors of the Gallbladder and the Bile Ducts (2 Charts)  
Acute and Chronic Pancreatitis (2 Charts)  
Cystic Fibrosis (1 Charts)  
Carcinoma of the pancreas (2 Charts)

## KIDNEYS, URETERS, AND URINARY BLADDER

Primary Diseases of the Kidney (16 Charts)  
The Kidney and Systemic Diseases (14 Charts)  
Diseases of the Urinary System (17 Charts)

## DISEASES OF THE MALE REPRODUCTIVE SYSTEM

Development of the Genital Tracts (2 Charts)  
Diseases of the Penis and the Urethra (10 Charts)  
Diseases of the Prostate Gland and the Seminal Tract (3 Charts)  
Diseases of the Scrotum and the Testis (9 Charts)

## DISEASES OF THE FEMALE REPRODUCTIVE SYSTEM

Diseases of the Vulva (6 Charts)  
Diseases of the Vagina (8 Charts)  
Diseases of Uterus (14 Charts)  
Diseases of the Fallopian Tubes (6 Charts)  
Diseases of the Ovary (15 Charts)  
Pregnancy and Its Diseases (11 Charts)  
Pathology of the Mammary Gland (10 Charts)

## INTEGUMENTARY SYSTEM (SKIN)

Acute Dermatitis (2 Charts)  
Chronic Dermatitis (1 Charts)  
Vesicular and Bullous Dermatoses (1 Charts)  
Infectious Diseases (5 Charts)  
Hyperplasia and Benign Tumors (2 Charts)  
Malignant Tumors (4 Charts)

## HEMATOPOIETIC AND LYMPHATIC TISSUES

Red Blood Cell Disorders (5 Charts)  
White Blood Cell Disorders (Nonlymphatic) (10 Charts)  
Nonneoplastic Lymphatic Disorders (8 Charts)  
Neoplastic Lymphatic Disorders (5 Charts)

## BONES, JOINTS, AND SOFT TISSUES

Diseases of Calcium Metabolism (5 Charts)  
Infectious Diseases (4 Charts)  
Noninfectious Arthritic Diseases (4 Charts)  
Paget Disease (2 Charts)  
Tumors of the Skeletal System (8 Charts)  
Soft Tissue Disorders (4 Charts)

## ENDOCRINE SYSTEM

Hypothalamus (2 Charts)  
Pituitary Gland (6 Charts)  
Thyroid Gland (7 Charts)  
Parathyroid Glands (2 Charts)  
Adrenal Cortex (5 Charts)  
Adrenal Medulla (1 Charts)  
Endocrine pancreas (3 Charts)

## NERVOUS SYSTEM

Neurologic Disorders of Infancy and Childhood (7 Charts)  
Pathologic Basis of Common Problems in Neurology (4 Charts)  
Cerebrovascular Disease (14 Charts)  
Central Nervous System Trauma (3 Charts)  
Brain Tumors (9 Charts)  
Degenerative Disorders of the Central Nervous System (4 Charts)  
Infectious Diseases (8 Charts)  
Demyelinating Disorders of the Central Nervous System (1 Charts)  
Disorders of the Spinal Cord, Nerve Root, and Plexus (7 Charts)  
Disorders of the Motor Neuron, Peripheral Nerve, Neuromuscular Junction, and Skeletal Muscles (8 Charts)

## CARDIOVASCULAR DISORDERS (3 Charts)

## RESPIRATORY DISORDERS (3 Charts)

## GASTROINTESTINAL DISORDERS (4 Charts)

## MUSCULOSKELETAL DISORDERS (2 Charts)

## IMMUNOLOGIC DISORDERS (1 Charts)

## REPRODUCTIVE DISORDERS (7 Charts)

## SKIN DISORDERS (4 Charts)

## SENSORY DISORDERS (2 Charts)

# Charts

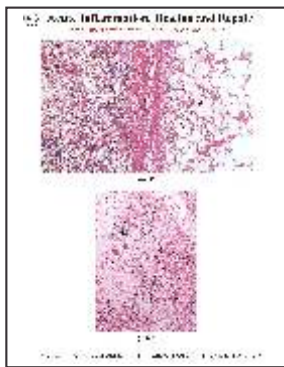
# Pathology



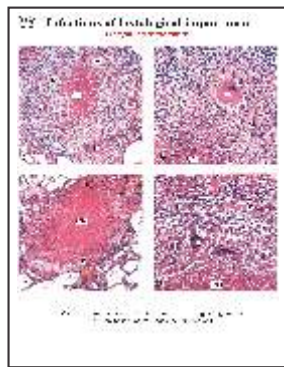
## Pathology Microscopic Photographs Laminated Framed on Board **SIZE 12" X 18"**

- CELLULAR RESPONSES TO INJURY **DHP 1 to DHP 8** (8 Charts x Rs. 400/-e)
- ACUTE INFLAMMATION, HEALING AND REPAIR **DHP 9 to DHP 20** (12 Charts x Rs. 400/-e)
- CHRONIC INFLAMMATION **DHP 21 to DHP 30** (9 Charts x Rs. 400/-e)
- INFECTIONS OF HISTOLOGICAL IMPORTANCE **DHP 31 to DHP 52** (22 Charts x Rs. 400/-e)
- AMYLOIDOSIS **DHP 53 to DHP 58** (6 Charts x Rs. 400/-e)
- DISORDERS OF GROWTH **DHP 59 to DHP 63** (5 Charts x Rs. 400/-e)
- DYSPLASIA AND NEOPLASIA **DHP 64 to DHP 80** (17 Charts x Rs. 400/-e)
- ATHROSCLEROSIS **DHP 81 to DHP 87** (7 Charts x Rs. 400/-e)
- THROMBOSIS AND EMBOLISM **DHP 88 to DHP 93** (6 Charts x Rs. 400/-e)
- INFRACTION **DHP 94 to DHP 98** (5 Charts x Rs. 400/-e)
- CARDIOVASCULAR SYSTEM **DHP 99 to DHP 115** (17 Charts x Rs. 400/-e)
- RESPIRATORY SYSTEM **DHP 116 to DHP 135** (20 Charts x Rs. 400/-e)
- GASTROINTESTINAL SYSTEM **DHP 136 to DHP 158** (23 Charts x Rs. 400/-e)
- LIVER AND PANCREATICOBILIARY SYSTEM **DHP 159 to DHP 171** (12 Charts x Rs. 400/-e)
- URINARY SYSTEM **DHP 172 to DHP 190** (19 Charts x Rs. 400/-e)
- LYMPHOID AND HAEMATOPOIETIC SYSTEMS **DHP 191 to DHP 207** (18 Charts x Rs. 400/-e)
- FEMALE REPRODUCTIVE SYSTEM **DHP 208 to DHP 230** (23 Charts x Rs. 400/-e)
- BREAST **DHP 231 to DHP 243** (13 Charts x Rs. 400/-e)
- MALE REPRODUCTIVE SYSTEM **DHP 244 to DHP 254** (11 Charts x Rs. 400/-e)
- ENDOCRINE SYSTEM **DHP 255 to DHP 271** (13 Charts x Rs. 400/-e)
- SKIN **DHP 272 to DHP 294** (23 Charts x Rs. 400/-e)
- BONE AND SOFT TISSUE **DHP 295 to DHP 311** (17 Charts x Rs. 400/-e)
- NERVOUS SYSTEM **DHP 312 to DHP 332** (21 Charts x Rs. 400/-e)

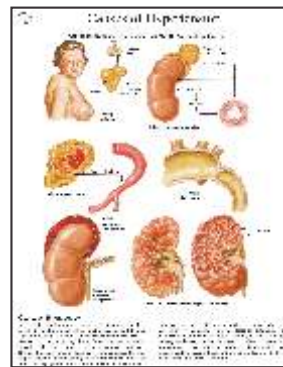
### Microscopic Slides PT 01 to PT 100 Available in sets only (100 Slides)



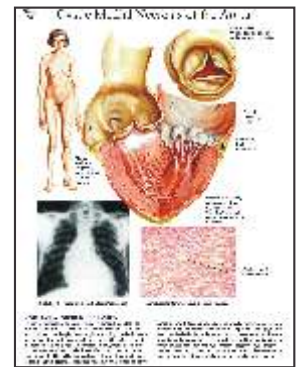
DHP 10



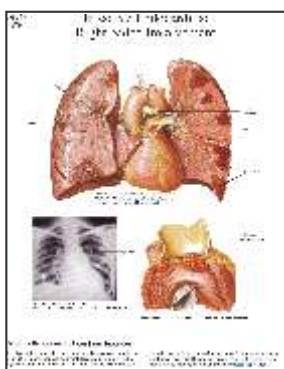
DHP 33



DP 16



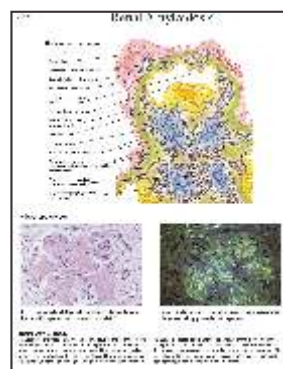
DP 25



DP 37



DP 84



DP 159



DP 421

Size : 20"x26" Laminated & Fitted with Plastic Strips  
 Size : 20"x26" Laminated & Framed on NU-Wood Board

## Microbiology Charts TOTAL 119 CHARTS

- Introduction to Microbiology (3 Charts)
- Normal Flora (1 Chart)
- Pathogenicity of Microorganisms (2 Charts)
- Diagnostic Microbiology (4 Charts)
- Vaccines And Antibiotics (5 Charts)
- Bacterial Structure, Growth And Metabolism (3 Charts)
- Bacterial Genetics (5 Charts)
- Staphylococci (2 Charts)
- Streptococci (2 Charts)
- Gram-positive Rods (3 Charts)
- Neisseriae (1 Charts)
- Gastrointestinal Gram-negative Rods (5 Charts)
- Gram-negative Rods (8 Charts)
- Clostridia and other Anaerobic Rods (3 Charts)
- Spirochetes (4 Charts)
- Mycoplasma (1 Chart)
- Chlamydiae (2 Charts)

- Mycobacteria And Actinomycetes (3 Charts)
- Rickettsiae (1 Charts)
- Fungi (4 Charts)
- Protozoa (5 Charts)
- Helminths (4 Charts)
- Viruses (5 Charts)
- Nonenveloped DNA Viruses (4 Charts)
- Enveloped DNA Viruses (6 Charts)
- Hepatitis B & Hepatitis D (delta) Viruses (4 Charts)
- Positive-strand RNA Viruses (5 Charts)
- Retroviruses and AIDS (6 Charts)
- Negative-strand RNA Viruses (4 Charts)
- Double-stranded RNA Viruses: (1 Chart)
- Unconventional Infectious Agents (1 Chart)
- Diseases (12 Charts)

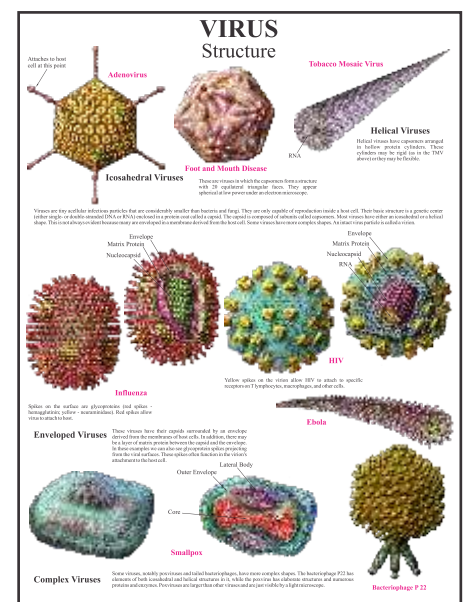
## PARASITOLOGY

LIFE CYCLE charts ascaris, echinococcus...  
 (1901 to 1947) 47 Charts

## MICROBIOLOGY IMP. CHARTS

Size 18"x24"Approx    Otherwise mentioned    Laminated framed on Board

- IMP 13 UNDERSTANDING AIDS LIFE (39"x19")
- IMP 14 ASCOMYCETES
- IMP 15 BASIDIOMYCETES
- IMP 16 ZYGOMYCETES
- IMP 17 BACTERIA
- IMP 18 VIRUS (SET OF 3)
- IMP 20 WATER BORNE PATHOGENS
- IMP 22 MICROBIOLOGY CAREER POSTER
- IMP 23 MICROBIOLOGY FOOD POISONING
- IMP 24 MECHANISM OF GENE TRANSFER
- IMP 25 BACTERIA CULTURE RESOURCE (21"x34")
- IMP 26 HUMAN MICRO ANATOMY POSTER (27"x38")
- IMP 27 DRUGS POSTER SERIES (17"x22")(SET OF 8)
- IMP 28 DANGEROUS DRUGS (30"x48")
- IMP 29 MICROBIOLOGICAL CHART (25"x35")



VIRUS - I

## LIFE CYCLE model s

- AM 123 L.C. Toxoplasma gondii
- AM 127 **Phlebotomus argentipes (SANDFLY)**
- AM 128 ANAEMIA KALA-AZAR
- AM 130 **L.C. of Leishmania tropica (SAND FLY)**
- AM 131 L.C. of Plasmodium vivax
- AM 133 **L.C. of Anopheles**
- AM 146 L.C. of Ancylostoma duodenale (HOOK WORM)
- AM 149 **L.C. of Enterobius vermicularis**
- AM 151 L.C. of Ascaris lumbricoides (ROUND WORM)
- AM 152 **L.C. of Wuchereria bancrofti (FILARIA)**
- AM 153 L.C. of a Culex
- AM 154 **L.C. of a N Aedes (STEGOMYIA)**

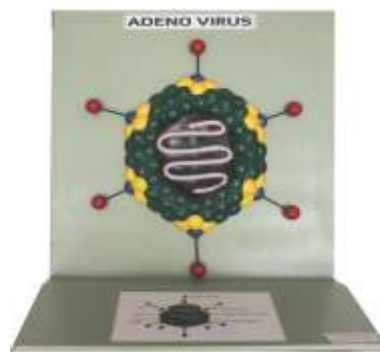
- AM 155 L.C. of a Mansonioides
- AM 156 **L.C. Strongyloides stercoralis**
- AM 157 L.C. Trichuris trichiura (Whip worm)
- AM 158 **L.C. Taenia saginata (Beef tape worm)**
- AM 159 L.C. Entamoeba histolytica (Causing amoebiasis)
- AM 160 **L.C. Taenia solium (pork tape worm)**
- AM 161 L. C. of a Giardia intestinalis (G. Lamblia)
- AM 163 **L.C. of Balantidium coil**
- AM 164 L.C. Dracunculus medinensis (Guinea worm)
- AM 165 **L.C. Fasciola hepatica (Sheep liver fluke)**
- AM 166 L.C. Echinococcus granulosus (Dog tape worm)

- MB 301 **Herpes Simplex virus**
- MB 302 Adeno virus
- MB 303 **Hepititis B Virus**
- MB 304 Polio Virus
- MB 305 **Influenza Virus**
- MB 306 HIV Virus

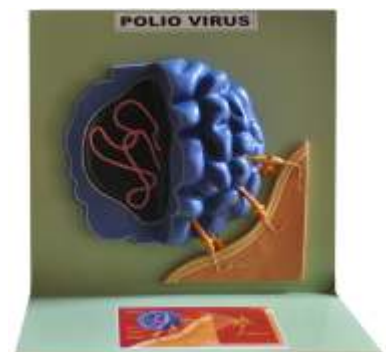
- MB 307 **Rhabdo Virus**
- MB 308 Bacteriophage
- MB 309 **Cultivation of Virus in Egg**
- MB 310 Rota Virus
- MB 311 **Cytamegalo Virus etc.**
- MB 312 **Helical Structure of Virus**



MB 301



MB 302



MB 304

## FORENSIC

- (1) AUTOPSY INSTRUMENT (POSTMORTEM SET )
- (2) AUTOPSY INSTRUMENT (POSTMORTEM SET )
- (3) AUTOPSY SAW



WEAPON SET OF 100

RECTANGULAR  
SPECIMEN  
JARS  
(ASK FOR  
SIZES & RATES)



POISON SET OF 100

**IMP.- 126 F**  
Rs. 28000/- Each (Female)

**IMP.- 126 IMPORTED**  
**SKELETON (USA)**

**IMP126A**

**Fetus Skeleton Model**

**IMP. 126A**



**IDENTIFICATION**

- DFM 02 Tattoo Marks over the forearm.  
 DFM 03 Types of Finger Prints: Set of four models of (a) Arch, (b) Loop, (c) Whorl and (d) composite types.  
 DFM 04 Occupational Marks: Bakers, Tailor, Lead line.

**POSTMORTEM CHANGES**

- DFM 07 Cadaveric Spasm (Hair).  
 DFM 08 Postmortem Changes: Marbling of the skin due to growth of the organism of decompositions from the abdomen into the system of veins entering of the root of the neck and abdomen.  
 DFM 08A Putrefication: Showing gaseous swelling, eye ball, Tongue, protrude giving, frog like appearances.  
 DFM 09 Adipocere Forearm (Stiffing & Swelling Fats).  
 DFM 09A Adipocere: Head & Neck showing the adipocere formation in subcutaneous fat, skin softened and rotted away.  
 DFM 10A Postmortem Staining portion of Body.  
 DFM 10B Colour Changes in Bruise set of 2 models.  
 DFM 11 Mummification: Soft part shrivel up, But remains natural appearance.

**INJURIES**

- DFM 12 Abrasions: Knee (Fell on Road).  
 DFM 12A Abrasion: Teeth.  
 DFM 12B Throttling: Finger mark on Neck.  
 DFM 13 Blunt Injuries: Models of face showing ragged splint wounds across brow cruising the skull with clubbed stick.  
 DFM 14 Bruise: Portion of face showing the swelling of the left eye-brow following fall.  
 DFM 14A Bruise Shoe Heel.  
 DFM 16 Axe Wound: Models of head showing multiple axe wounds of the head.  
 DFM 17A Head Injury Skull (Road Accident).  
 DFM 18 Incised wound: Model of neck showing the tentative incised wounds of the throat of suicidal character too superficial to cause harm.  
 DFM 19 Murder by Deep Wound: Model of head and neck depicting deep wounds parallel to but at some distance from the fatal one indicative of homicide.  
 DFM 20 Stab Wound (Abdomen).  
 DFM 21 Homicidal Wounds of Throat: Model of head and neck showing the incised wounds of the throat.  
 DFM 21A Protective Wounds: Model of hand depicting protective wounds caused by the knife slipping through the right hand of the victim attempting to grapple with an assailant.  
 DFM 21B Defensive wounds of Forearm: Showing typical incised wounds.  
 DFM 21C Murder by Stabbing: Model of back of person depicting stabbed wounds one of which heaving been broadened by rocking of the knife.  
 DFM 21D Suicidal Contract Wound: Model of head depicting the contract wound by 32 pistol in center brow. This ring around the entry wound due to pressure of soiled muzzle against the skin is also depicted.

- DFM 22 Exit Hole in Skull by Bullet: Set of two models for (i) Internal and (ii) External views of exit hole made in skull vault by bullet passing up, through brain.  
 DFM 22A Infanticide: Model of head of a child which was beaten on a wooden floor causing splitting of skin and abrasions, on cheek.  
 DFM 23A Puncture Wound on Chest: Perforated entry wound.  
 DFM 24 Homicidal Gun Shot Wound: Model of Fore head showing a shot gun wound of near discharge in case of Homicide.  
 DFM 25 Entry and Exit Wound: Set of two models for entry and exit wounds from discharge of 32 revolver, muscle in contract with skin.  
 DFM 26 Healing of Wound: Set of 5 models of stages of (1) first 12 hours, (2) 24 hours, (3) 36 hours, (4) 48 hours, (5) 3-5 days.  
 DFM 27 Head Injury Depressed Frontal Fracture.  
 DFM 29 Nose Bitten of by Teeth.  
 DFM 31 Electric Burn: Hand showing the caused electric burn by live wire contact.  
 DFM 31A Electric Burn: Portion of body depicting electric burn caused by repeated application of live two pin plug.

**BURNS**

- DFM 32 Scalds: Hand fell in Boiling ghee.  
 DFM 33A Lysol Burns: Model of face depicting lysol burns of the lips running down over the chin.  
 DFM 33B Burns of face from a kerosene Oil lamp.  
 DFM 34 Degrees of Burns: Set of four models showing degrees.

**VIOLENT ASPHYXIAL DEATHS**

- DFM 35 Asphyxial Petechiae: Model of face depicting asphyxia by suffocation following stuffing of the mouth and throat, minute asphyxial petechiae are present over the brow and face.  
 DFM 36A **Suicidal Hanging:** Model of head and neck depicting the pattern of rope wound.  
 DFM 38 **Strangulation:** Showing Ligature Mark by cane wound round the neck.  
 DFM 38A **Hanging Double Loop:** Head and neck depicting Double loop of wire-rope wound twice round the neck.

**POSTMORTEM ARTEFACTS**

- DFM 40A Postmortem Lividity: Over face causing dark stain except where prevented by pressure.

**EXHUMATION**

- DFM 41 Drowning: Model depicting froth of inhaled water mixed with mucous appearing at mouth due to drowning.

**POISONS & POISONING**

- DFM 43B Stomach Poisoning by Sulphuric Acid.  
 DFM 43C Stomach Poisoning by Oxalic Acid.  
 DFM 43D Arsenical Poisoning: Portion of body showing melanosis pigmentation of skin in chorionic arsenical poisoning.  
 DFM 43E Stomach Poisoning: Caustic Potash.  
 DFM 43F Stomach Poisoning: Lysol.  
 DFM 43G Stomach Poisoning by Hydrochloric Acid.

**RAPE MODEL**

- DFM 44 Rape: Head and neck of a girl with attempted strangulation marks on neck.  
 DFM 44A Types of Hymens: Set of six models of (1) Semilunar or crescentic, (2) Fimbriate, (3) Circular, (4) Septate, (5) Two lateral lacerations and (6) Circular torn in several places-of hymens.  
 DFM 47 The Typical Breast of a Virgin.  
 DFM 47A The Slightly pendulous breast of recently married woman.

Size : 20"X26"

Laminated & Fitted with plastic strips  
Laminated & Mounted on Board

All Charts Also Available Size: 30"x40"

Laminated & Fitted with Plastic Rollers

## 58 Digital Photographs

FCH 01.	ABRASION:- GRAZED AND IMPRINT	FCH 14.	EXTRA CRANIAL HEMORRHAGE	FCH 27.	PETECHIA HEMORRHAGES IN WHITE MATTER
FCH01A	ABRASION:- MULTIPLE	FCH 14A	DEPRESSED COMMUNUTED FRACTURE	FCH 28.	PHYSIOLOGY OF RIGOR MORTIS
FCH01B	ABRASION:- CONTUSED	FCH 14B	BURST FRACTURE	FCH 29.	POSTMORTEM ARTIFACTS
FCH01C	ABRASION:- PRESSURE	FCH 14C	PONTINE HEMORRHAGES	FCH 30.	POSTMORTEM LIVIDITY
FCH01D	ABRASION:- PARTIALLY HEALED	FCH 14D	SUBDURAL HEMORRHAGES	FACH 30A	POSTMORTEM BLISTERS
FCH01E	ABRASION:- ANT BITE MARK	FCH 15.	EXTRA DURAL HAEMATOMA	FCH 31.	PUTREFACTION BLOATING
FCH 02.	ABRUS PRECATORIUS	FCH 16.	FIRE ARM INJURY	FCH 31A	PUTREFACTION DISCOLORATION
FCH 03.	ADIPOCERE	FCH 17.	FRACTURE SKULL	FCH 31B	PUTREFACTION :- MARBLING OF SKIN
FCH 04.	BITE MARK	FCH 18.	HANGING	FCH 32.	RICINUS COMMUNIS
FCH 05.	BRUISE	FCH 18A	INCOMPLETE ATYPICAL HANGING	FCH 33.	SKELETONIZED
FCH 06.	BURNS: EPIDERMAL AND DERMAL	FCH 19.	HOMICIDAL, SUICIDAL CUT THROAT INJURY	FCH 34.	SNAKES
FCH 06A	BURNS:- GRANULATION TISSUE	FCH 20.	HUMAN BLOOD, FROG BLOOD	FCH 35.	STAB WOUNDS
FCH 06B	BURNS:- CHARRED BODY	FCH 21.	HUMAN HAIR, ANIMAL HAIR	FCH 36.	STRANGULATION
FCH 07.	CALTROPS	FCH 22.	HUMAN SEMEN	FCH 37.	STRYCHNOS NUX VOMICA
FCH 08.	COMMUNUTED FRACTURE OF SKULL	FCH 23.	INCISED WOUND	FCH 38.	SUBARACHNOID HEMATOMA
FCH 09.	DEFENSE WOUND	FCH 23A	CHOP WOUND	FCH 39.	SUBDURAL HEMATOMA
FCH 10.	DHATURA	FCH 23B	STAB WOUND	FCH 40.	TRAUMATIC ASPHYXIA
FCH 11.	DHATURA, CHILLY SEEDS	FCH 24.	LACERATED WOUND	FCH 41	CADAVERIC SPASM
FCH 12.	DIFFERENT AGES OF BRUISES	FCH 24A	MULTIPLE LACERATION		
FCH 13.	ELECTRIC BURN MARK	FCH 25.	MAGGOTS		
		FCH 26.	MECHANISM OF INJURIES IN ROAD TRAFFIC ACCIDENTS		

### LEGAL PROCEDURES IN MEDICO - LEGAL CASES

- CH 779A THE DECLARATION OF GENEVA
- CH 779B CONDUCT & DUTIES OF DOCTOR IN THE WITNESS BOX
- CH 779C NEW DUTIES OF A MEDICAL OFFICER IN CASE OF SUSPECTED POISONING
- CH 779D NEW CONSUMER PROTECTION ACT (C.P.A.)

- CH 781. { Difference Between Police & Magistrate / Corner's Inquest } **IN ONE CHART**
- CH 782. DIFFERENCE BETWEEN DYING DECLARATION & DYING DEPOSITION

### IDENTIFICATION OF AN INDIVIDUAL

- CH 783. MORPHOLOGICAL FEATURES OF THE THREE PRIMARY RACES CAUCASIANS, MONGOLIANS & NEGROES
- CH 784. IMPORTANT DATA FOR IDENTIFICATION OF PERSON
- CH 785. DETERMINATION OF SEX FROM PHYSICAL / MORPHOLOGICAL FEATURES (PRIMARY & SECONDARY SEX FEATURES)
- CH 786. AGES OF ERUPTION OF TEETH
- CH 787. DIFFERENCE BETWEEN TEMPORARY & PERMANENT TEETH
- CH 788. SEX DIFFERENCE FEATURES IN SKULL
- CH 790. SEX DIFFERENCE FEATURES IN MANDIBLE
- CH 791. SEX DIFFERENCE FEATURES IN SACRUM
- CH 792. SEX DIFFERENTIATING FEATURES IN ARTICULATED PELVIS
- CH 793. DIFFERENCE BETWEEN MANDIBLE IN INFANCY, ADULT & OLD AGE
- CH 794. DIFFERENCE BETWEEN HUMAN & ANIMAL HAIR
- CH 795. ESTIMATION OF AGE

### IMPORTANCE OF AGE

- CH 797. MEDICO - LEGAL IMPORTANCE OF AGE
- CH 798. AGE OF THE FOETUS
- CH 799. USE OF DNA IDENTIFICATION & OTHER FORENSIC PRACTICES
- CH 799A AGES OF APPEARANCE AND FUSION OF OSSIFICATION CENTERS OF DIFFERENT BONES

### IDENTIFICATION FROM TRACE SUBSTANCES & THEIR OTHER EVIDENT VALUES

- CH 800. INTERPRETATION OF ABO GROUPING TEST FOR UN KNOWN CELL & SERUM
- CH 801. ABO PHENOTYPE & GENOTYPE RELATIONSHIP BETWEEN PARENTS & CHILDREN
- CH 802. MN PHENOTYPE & GENOTYPE RELATIONSHIP BETWEEN PARENTS & CHILDREN

### DEATH AND POST MORTEM CHANGES

- CH 803. DIFFERENCE BETWEEN BRUISE & POSTMORTEM STAINING
- CH 804. DIFFERENCE BETWEEN CONGESTION & POSTMORTEM STAINING IN ORGANS
- CH 805. DIFFERENCE BETWEEN ANTI-MORTEM & POST MORTEM WOUND
- CH 805A PROCESS OF DECOMPOSITION (PUTREFACTION)
- CH 805B MUTILATED BODIES
- CH 805C DETAILS OF VISCERA AND OTHER ARTERIES
- CH 805D THE POSTMORTEM FATE OF HUMAN REMAINS
- CH 805E DIFFERENCE BETWEEN RIGOR MORTIS AND CADAVERIC SPASM

### LEGAL CONSIDERATION & TYPES INJURIES

- CH 806. CLASSIFICATION OF WOUNDS
- CH 807. CLASSIFICATION ACCORDING TO SEVERITY OF THE INJURY (A ) SIMPLE B) GRIEVOUS OR DANGEROUS HURT
- CH 807A DIFFERENCES BETWEEN ANTEMORTEM AND POSTMORTEM ABRASIONS

### MECHANICAL INJURIES

- CH 808. DIFFERENCE BETWEEN BRUISES & LESIONS PRODUCED BY CHEMICALS
- CH 809. DIFFERENCE BETWEEN BRUISES & CONGESTION
- CH 810. DIFFERENCE BETWEEN SUICIDAL & HOMICIDAL CUT THROAT
- CH 811. DIFFERENCE BETWEEN WOUNDS OF ENTRANCE & EXIT
- CH 812. SHOT GUN INJURIES

### THERMAL INJURIES

- CH 813. RULE OF NINE (DIFFERENCE BETWEEN BURNS & SCALDS)

### VIOLENT ASPHYXIA DEATHS

- CH 814. DIFFERENCE BETWEEN HANGING & STRANGULATION

### FORENSIC TOXICOLOGY

- CH 815. CLASSIFICATION OF POISONS
- { Part-1 According To The Site & Mode of Action } **IN ONE CHART**
- { Part-2 According To The Motive or Nature of Use }
- CH 815A TREATMENT OF COMMON POISONS

### METALLIC CHEMICAL IRRITANTS

- CH816. DIFFERENCE BETWEEN ACUTE ARSENIC POISONING & CHOLERA /GASTRO-ENTERITIS

### SPINAL POISONS

- CH 817. DIFFERENCE BETWEEN STRYCHNINE POISONING & TETNUS N.H.R.C. ON AUTOPSY PROTOCOL
- CH 819. POSTMORTEM DETECTION OF TORTURE

### PREGNANCY & DELIVERY

- CH 820. HEIGHT & FUNDUS OF UTERUS AT DIFFERENT PERIODS OF PREGNANCY
- CH 821. DIFFERENCE MEASUREMENTS OF UTERUS AFTER DELIVERY
- CH 821A DIFFERENCE BETWEEN VIRGINITY AND DEFLOURATION
- CH 821B CLASSIFICATION OF SEXUAL OFFENCES

### ANIMAL IRRITANTS

- Ch823. TYPES OF SNAKES NON POISONOUS SNAKE, PYTHON, BANDED KRAIT, COMMON KRAIT, KING COBRA, RUSSELL VIPER
- CH 824. DIFFERENCE BETWEEN COBRA & VIPER FATAL DOSE & AMOUNT INJECTED IN ONE BITE

- CH 824A SCORPION
- CH 824B BEES AND WASPS
- CH 824C CANTHARIDES (SPANISH FLY)

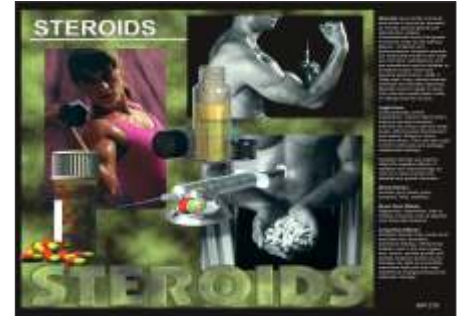
### FORENSIC PSYCHIATRY

- CH 825. DIFFERENCE BETWEEN TRUE INSANITY & FEIGNED INSANITY

## Drug Charts

Size 21"x17" Laminated & Mounted on Board

- |                  |              |                        |               |
|------------------|--------------|------------------------|---------------|
| 1. Hallucinogens | 3. Marijuana | 5. Pcp (Phencyclidine) | 7. Steroids   |
| 2. Inhalants     | 4. Narcotics | 6. Sedatives           | 8. Stimulants |



- IMP.130** IMPORTED VERTEBRAL COLUMN WITH STAND  
Flexible spine, with pelvis, occipital bone, vertebral artery and dorsal herniated disc between the 3rd and 4th lumbar vertebrae. **Size : 29" tall.**
- IMP. 131** IMPORTED VERTEBRAL COLUMN WITH FEMORAL HEADS & STAND  
Same as IMP. 130 with addition of movable femoral heads **size 32" tall**
- A-86** IMPORTED ADULT LEG BONE WITH THREE JOINTS & LIGAMENTS
- A-87** IMPORTED ADULT ARM BONE WITH THREE JOINTS & LIGAMENTS
- IMP 339** SKELETON OF MALE PELVIS (**LENGTH 24CM. , WIDTH 17CM. , HEIGHT 15CM. )**
- IMP 340** SKELETON OF FEMALE PELVIS (**LENGTH 20CM., WIDTH 15CM. , HEIGHT 19CM.)**
- Imp. 97 A** FETAL SKULL
- Imp. 104 G** ADULT SKULL GERMAN
- Imp. 260 A** COMPARATIVE STUDY OF LOWER JAW (SET OF 5)
- Imp. 260 B** COMPARATIVE STUDY OF TEETH (SET OF 3)
- Imp. 260 A** COMPARATIVE STUDY OF SKULL (SET OF 5)

## All Skeleton Parts are Near to Original

- |                               |                                   |
|-------------------------------|-----------------------------------|
| Skull With Mandible 3parts    | Femur, Tibia, Fibula (Right)      |
| Ribs (L&R)                    | Vertebral Column (Disarticulated) |
| Sternum                       | Cervical Vertebrae (Set of 7)     |
| Humerus, Radius, Ulna (Left)  | Thoracic Vertebrae (Set of 12)    |
| Humerus, Radius, Ulna (Right) | Lumbar Vertebrae (Set of 5)       |
| Pelvis (L&R)                  | Hand Disarticulated (L&R)         |
| Sacrum                        | Foot Disarticulated (L&R)         |
| Femur, Tibia, Fibula (Left)   |                                   |

## Pioneers of Forensic

Size: 20"x26" Thick Laminated & Framed on NU-Wood Board

- |      |                                   |       |                |              |                              |
|------|-----------------------------------|-------|----------------|--------------|------------------------------|
| FP 1 | Alphonse Bertillon                | FP 6  | Sara Bisel     | FP 12        | Michael Baden                |
| FP 2 | Mathieu Joseph Bonaventure Orfila | FP 7  | William Bass   | FP 13        | Alexandre Beaudoin           |
| FP 3 | Alec Jeffreys                     | FP 8  | William Maples | FP 14        | Brian E. Dalrymple           |
| FP 4 | Edmond Locard                     | FP 9  | Clea Koff      | FP 15        | Paul L. Kirk                 |
| FP 5 | Joseph Bell                       | FP 10 | Cyrrill Wecht  | <b>FP 16</b> | <b>Forensic History - I</b>  |
|      |                                   | FP 11 | Henry Lee      | <b>FP 17</b> | <b>Forensic History - II</b> |



## DEPARTMENT OF HOMOEOPATHIC PHARMACY

- |   |   |
|---|---|
| 1 | DISPENSING BALANCES WITH METRIC WEIGHTS             |
| 2 | PILL TILES  |
| 3 | SUPPOSITORY MOULDS- 4 Mould                         |
| 4 | THIN LAYER CHROMATOGRAPHY APPARTUS                  |
| 5 | T.L.C WITH UV ATTACHMENT                            |
| 6 | ELECTRIC POTENTISER/ DIGITAL POTENTIOMETER          |
| 7 | ELECTRIC TRITURATOR/ KARL FISHER TITRATION APPARTUS |
| 8 | CONICAL PERCULATOR (STEEL)                          |

**Digital Photographs showing Synonym, Family, Biological Source, Active Constituents & Uses. Thick Laminated & Framed on NU-Wood Board**

**Size 12"X18" Approx**

### Digital Photographs Homeopathy (Total 157)

- CH 2600 PHARMACIST'S OATH**
- CH 2601 BAHERA
  - CH 2602 ARCHI OIL
  - CH 2603 PAPAINE
  - CH 2604 SHANKHPUSHPI
  - CH 2605 SHARK LIVER OIL
  - CH 2606 COTTON
  - CH 2607 ASWAGANDHA
  - CH 2608 TAMARINDS
  - CH 2609 SENNA LEAVES
  - CH 2610 BRAHMI
  - CH 2611 PUNARNAVA
  - CH 2612 RHUBARB
  - CH 2613 NEEM OIL
  - CH 2614 AJOWAN
  - CH 2615 STROPHANTHUS
  - CH 2616 BAEL
  - CH 2617 ACACIA (INDIAN GUM)
  - CH 2618 COCOA
  - CH 2619 TURMERIC
  - CH 2620 BITTER ORANGE PEEL
  - CH 2621 NUX-VOMICA
  - CH 2622 BLACK PEPPER
  - CH 2623 OPIUM
  - CH 2624 JATAMANSI
  - CH 2625 CANNABIS
  - CH 2626 VINCA
  - CH 2627 ISAPGOL (ISPAGHULA)
  - CH 2628 GINGER
  - CH 2629 CINNAMON
  - CH 2630 VASAKA
  - CH 2631 CELERY

- CH 2632 ARJUNA BARK
- CH 2633 VALERIAN
- CH 2634 CLOVE BUD
- CH 2635 LINSEED OIL
- CH 2636 GYMNEMA
- CH 2637 NUTMEG
- CH 2638 DIGITALIS
- CH 2639 CHAULMOOGRA
- CH 2640 GINSENG ROOTS
- CH 2641 EUCALYPTUS
- CH 2642 BLACK CATECHU
- CH 2643 GARLIC
- CH 2644 PEPPERMINT
- CH 2645 TULSI
- CH 2646 PYRETHRUM
- CH 2647 AMLA
- CH 2648 MOMORDICA
- CH 2649 CUMMIN
- CH 2650 VIDANG
- CH 2651 HYOSCYAMUS
- CH 2652 SAGE
- CH 2653 DIOSCOREA
- CH 2654 L.H.ERGOT
- CH 2655 ALOE
- CH 2656 ALMONDS
- CH 2657 LEMON PEELS
- CH 2658 THEVETIA
- CH 2659 PICRORRHIZA
- 
- 
- 
- CH 2757 TRIPHALA



CH 2623



CH 2630



CH 2695



CH 2699

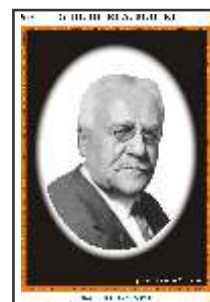


### SCIENTIST PORTRAITS

Size : 12"x18" Laminated & Framed on NU-Wood Board

- BABU RAJENDRALAL BUTTA
- CONSTANTINE HERING
- CYRUS MAXWELL BOGER
- Dr. SAMUEL HAHNEMANN
- HERBERT A. ROBERT

- Dr. J. Henry ALLEN
- JEMES TYLER KENT
- MAHENDRALAL SARKAR
- MARGARET LUCY TYLER
- STUART CLOSE



Herbert A. Robert



Cyrus Max Boger

## DEPTT OF COMMUNITY MEDICINE

- 1 BAROMETER (ANEROID DIGITAL)
- 2 LACTOMETER
- 3 HYDROMETER
- 4 HYDROMETER ( WET & DRY BULB)
- 5 FILTER PASTER CHAMBER LAND FILTER (MODEL)
- 6 CHARTS COMMUNITY, DIET, (20X26" LAMINATED WITH STRIPS)
- 7 CHARTS COMMUNITY, DIET, (20X26" LAMINATED ON BOARD)
- 8 SLOW SAND FILTER MODEL
- 9 BARKFELD FILTER
- 10 SMOKE LESS CHULLAHA
- 11 IDEAL WELL
- 12 RAPID SAND FILTLER
- 13 TUBECTOMY
- 14 VASCETOMY
- 15 MODEL OF CONDOM

### OBST & GYNE

CHARTS (20X26" LAMINATED WITH STRIPS) 70 CHARTS X  
 CHARTS (20X26" LAMINATED ON BOARD) 70 CHARTS X  
 MODELS

### PRACTICE OF MEDICINE

CHARTS(20X26" LAMINATED WITH STRIPS) 70 CHARTS X  
 CHARTS (20X26" LAMINATED ON BOARD) 70 CHARTS X  
 MODELS (ASK FOR LIST)

## HOMOEOPATHY / MATERIA MEDICA

### DIGITAL CHARTS

**SIZE : 12" X 18" laminated on Board**

- CH 1400 Dr. Sameul Hahnemann
- CH 1401 Volcano
- CH 1402 Aconitum Napeilus
- CH 1403 Arnica Montana
- CH 1404 Atropa Belladonna
- CH 1405 Cantharis
- CH 1406 Chamomilla
- CH 1407 Euphrasia Officinalis
- CH 1408 Gelsemium Semipervirens
- CH 1409 Lachesis Trigocephalis
- CH 1410 Ledum Palustre
- CH 1411 Nux-Vomica
- CH 1412 Lycopodium Clavatum
- CH 1413 Pulsatilla Nigricans
- CH 1414 Calcarea Carbonica
- CH 1415 Rhus - Toxicodendron
- CH 1416 Calendula Officinalis
- CH 1417 Eupatorium Perfoliatum
- CH 1418 Spongia Tosta
- CH 1419 Drosera Rotundifolia
- CH 1420 Hypericum Perforatum
- CH 1421 Ruta Graveolens
- CH 1422 Symphytum
- CH 1423 Sambucus Nigra
- CH 1424 Zinziber Officinalis
- CH 1425 Teraxacum Officinalis
- CH 1426 Crataegus Oxyacantha



Name : ACONITUM NAPELUS  
 Common Name : Monk's Hood, Wolf's Bane, Helmet Flower.  
 Source : Vegetable Kingdom.  
 Family : Ranunculaceae  
 First Prover : Dr. Samuel Hahnemann.  
 Parts Used : Whole Plant including the roots.  
Dr. B. Biological World, Andhra Coll.

CH - 1402

### Dbios REXINE CHARTS

**SIZE : 30" X 40"**

- CH 751 Arnica Montana
- CH 752 Phosphorus
- CH 753 Magnesia phosphorica
- CH 754 Aconite napellus
- CH 755 Sulphur
- CH 756 Shotgun injuries at varying ranges
- CH 757 Asphyxial death of common ranges
- CH 758 Rule of nine
- CH 759 Fear from different sources
- CH 760 Belladonna
- CH 761 Gelsemium
- CH 762 Pulsatilla nigricans
- CH 763 Naja (Indian cobra)
- CH 764 Bothrops (Viper)
- CH 765 Crotallus horridus (Rattle snake)
- CH 766 Bushmaster (Surukuku viper)
- CH 767 Bryonia alba (Cucurbitaceae)
- CH 768 Ficus indica (Utricaceae)
- CH 769 Hyoscyamus (Solanaceae)
- CH 770 Chelidonian majus (Papaveraceae)
- CH 771 Digitgalis purpurea (Scrophulariaceae)
- CH 772 Calendula officinalis (Compositae)
- CH 773 Ignatia amara (loganaceae)
- CH 774 Belladona (Solanaceae)
- CH 775 Stramonium (Solanaceae)
- CH 776 Citrus auran tifolia (Rutaceae)

# Instruments

## Department of Pathology and

### Microbiology:

- 1 Hot air oven (50 C) for special standing
- 2 Centrifuge machine electric Rotofix
- 3 Water bath, electric
- 4 Glass ware, stains, chemical reagents for histopathology etc.
- 5 Incubator
- 6 Haemocytometer with R.B.C and W.B.C pipettes
- 7 Haemoglobinometer Sahli s types
- 8 Autoclave
- 9 Anaerobic apparatus
- 10 Stopwatch sec
- 11 pH meter
- 12 Microscopes with oil immersion
- 13 High power Centrifuge for serological/Hematological work
- 14 E.S.R Westergreen/Wintrobe
- 15 Colony counter
- 16 Material for preparation of media
- 17 Material for preparation of stain
- 18 Coplin Jars
- 19 Computer with accessories
- 20 Machine for estimation for blood sugar and for other serological tests

## Department of Homoeopathic Pharmacy

- 1 Pill tiles
- 2 Porcelain dishes
- 3 Crucibles with tongs
- 4 Pestles and mortars ( , Porcelain)
- 5 Water bath, COPPER 4"
- 6 Microscope (Student type)
- 7 Glass apparatus for filtration with vacuum
- 8 Thin layer chromatography apparatus
- 9 pH meter
- 10 Stop watch
- 11 Hydrometer
- 12 Alcoholometer
- 13 Lactometer
- 14 Electric potentiser (for P.G. Course)
- 15 Electric Triturator (for P.G. Course)
- 16 Water Still (Distilled Water Plant)
- 17 Percolater
- 18 Macerator MANUAL

- 19 Botanical slides
- 20 Colorimeter (for P.G. Course)
- 21 Crucible
- 21 Spectro Scope (for P.G. Course)
- 22 Dissecting Microscope
- 23 Distillation Apparatus (Glass)
- 24 Pyknometer (Specific Gravity Bottle)
- 25 Electronic Balance
- 26 Hot Air Oven
- 27 Chemical Balance
- 27 Chemicals
- 27 Glass phial 1, 2 and 1 ounce
- 28 Glass rods
- 29 Funnel
- 30 Filter paper

## Hospital

1. Stretcher with trolley
2. B.P. Instrument Dial
3. Urine Pots; Male and female
4. Bed Pans PLASTIC
5. Tongue depressor (disposable)
6. O2 cylinder with stand
7. Diagnostic Set (ENT)
8. Chair with Wheels
9. Refrigerator
10. Weighing Machine
11. ECG Machine

## Physiology

- 1 Medical Microscope
- 2 Equipment for ESR estimation/ Westergren s pipette for ESR on stand
- 3 Haematocrit tubes
- 4 Auto Analyzer or Semi Auto Aalyzer
- 5 Haemoglobinometer Sahli
- 6 Haemocytometer
- 7 Sphygmomanometer
- 8 Stethoscope
- 9 Clinical thermometer (Digital)
- 10 Knee hammer

# Instruments

## Physiology

- 11 Tuning forks to test hearing (32-10000 hzs)
- 12 Stethographs or pneumographs
- 13 Electrocardiograph (ECG Machine)
- 14 Electronic Stop Watches 1/10 sec.
- 15 Glass Distillation (double) apparatus
- 16 Centrifuge (Medium speed)
- 17 Colorimeter (photo electric)
- 18 pH Meter electric
- 19 Colour perception lantern (Edridge Green)
- 20 Incubator
- 21 Educational CD, DVD, films, slides, models with Audio Visual Aids
- 22 Perimeter
- 23 Spirometer
- 24 Tonometer
- 25 Handgrip dynamometer
- 26 Bicycle Ergometer
- 27 ESR estimation/Westergen's PIPPET

## Biochemistry

- 1 Electronic/Monopan Balance
- 2 Centrifuge
- 3 Balance, chemical/ordinary
- 4 Water baths ELECTRIC 6 HOLE
- 5 Urinometer
- 6 Hydrometer (0.700 to 1.00)
- 7 Albuminometers
- 8 Glucometer
- 9 Thermometer
- 10 Colorimeter
- 11 Hot air oven 14" x14" x14" (Electric)
- 12 Double Distillation apparatus Glass AUTO CUTOFF
- 13 Centrifuge, medium speed, electric

## Anatomy

1. Dissection set complete
2. Saw; for sectioning body & limbs
3. Microscope; Medical
4. Formaline
5. Incubator 12"x12"x12"
6. Bulb of LCD Projector 24v-250w