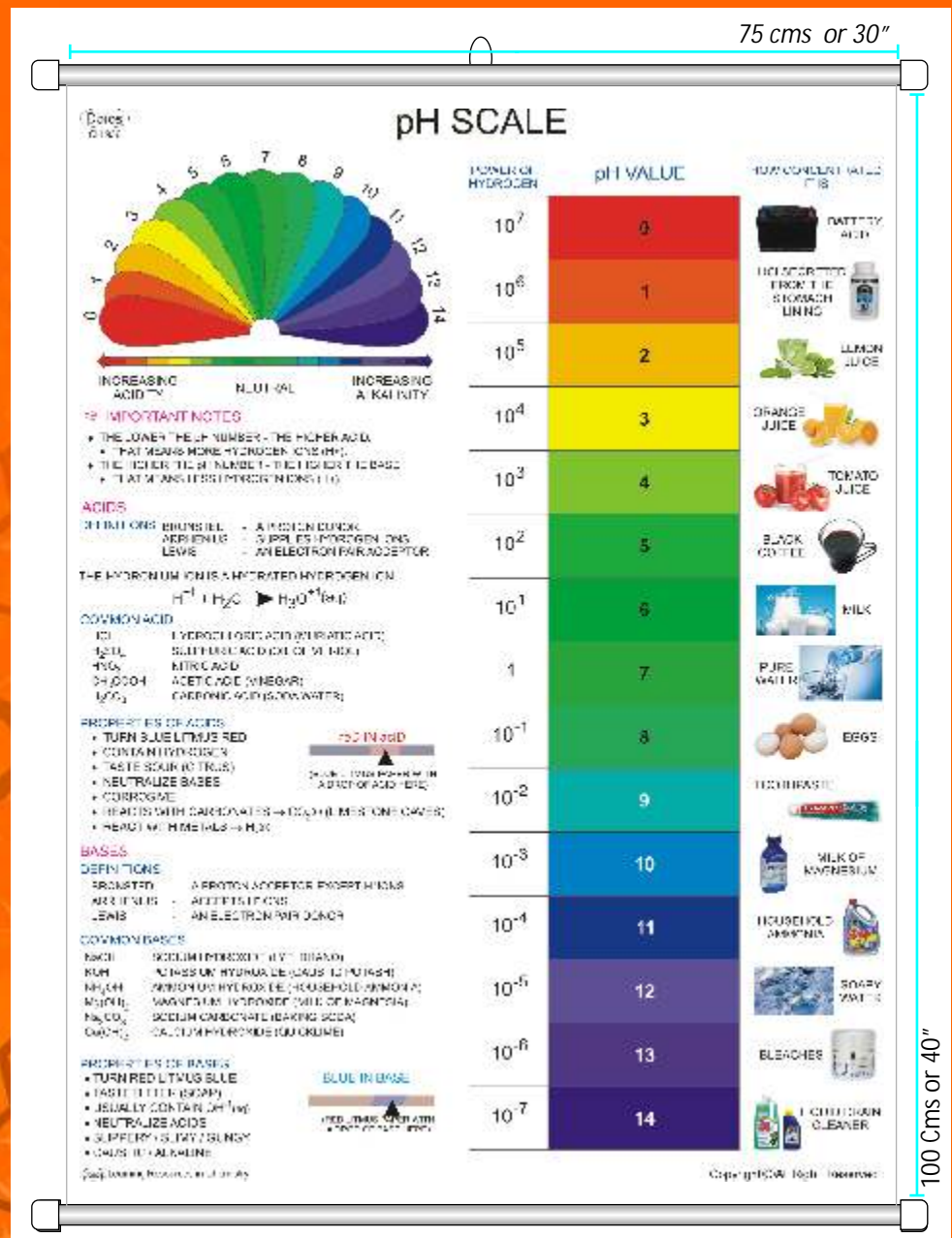


List No. 1 PC
w.e.f. June 15, 2017

Dbios CHARTS, SCIENTIST & MODELS

PHYSICS & CHEMISTRY



DESH BIOLOGICAL WORKS

#1245, HARGOOLAL Road, Ambala Cantt -133001, Haryana, (INDIA)
Ph.: 0171-4007531, 2643822, Mob.: 09896662901, 0972901431
website: www.dbioscharts.com, e-mail: desh@dbios.org, deshbiological@gmail.com

Physics - Total 118 Charts



Phy 02

OPTICS

- CH 293 Eye & Its Defects
- CH 830 Refraction of Light
- CH 831 Reflection of Light
- CH 835 Chromatic Aberrations & Their Remedies
- CH 836 Optical Microscope
- CH 837 Optical Telescope
- CH 843 Michelson's Interferometer
- CH 850 Light Dispersion
- CH 851 Light Diffraction
- CH 852 Light Polarisation
- CH 853 Light Interference
- CH 854 Line spectra
- CH 855 Images Formed by Lenses
- CH 856 Images Formed by Mirrors
- CH1050 Optical Fibre- Basic Principle
- CH1051 Fibre Splicer, Coupler

MECHANICS

- CH 873 Surface Tension
- CH 874 Newton's Laws of Motion
- CH 875 Dimensional Formulae
- CH 841 Elasticity-Hooke's Law
- CH1055 Simple Pendulum & S.H.M.
- CH1056 Moment of Inertia
- Ch1057 Cantilevers & C.L.B.
- CH 1058 Galileian & Lorenz Transformations

- Phy 01 Vernier caliper
- Phy 02 Simple Machine
- Phy 03 Density
- Phy 04 Sound

ATOMIC & NUCLEAR PHYSICS

- Phy 05 Theory of matter
- CH 1060 Structure of Atom
- CH 1061 Nuclear Fission Reactors
- CH 1062 Zeeman & Paschen-Back Effect

- CH 1063 Stark & Raman Effect
- CH 868 Atomic Reactor
- CH 869 Nuclear Fission & Fusion
- CH 845 Particle accelerator-Cyclotron
- CH 846 Nuclear Radiation Detectors-I
- CH 846A Nuclear Radiation Detectors-II
- CH 1064 Effects of Radiation on Human

HEAT&THERMODYNAMICS

- CH 829 Heat Transfer
- CH 834 Types & Uses of Thermometers
- CH 838 Davison & Germer Experiment
- CH 839 Carnot Cycle
- CH 867 Inter Conversion of Energy
- Phy 06 Energy Forms
- CH 876 Engines (Internal & External Combustion)

- CH 1065 Thermodynamical Processes
- CH 1066 Calorimeter (Joule's Method)

MODERN PHYSICS

- CH 840 Lasers-Basic Principle
- CH 847 Photoelectric Effect
- CH 848 Origin of X-Rays
- CH 1059 Holography
- CH 1070 Compton's Effect
- CH 1071 Basic Laser Device & Action
- CH 1073 Lasers-Types
- CH 1074 Michelson - Morley Experiment

ELECTRICITY & MAGNETISM

- CH 833 Uses of Electricity in Daily Life
- CH 849 Ohm's Law
- CH 859 Kirchoff's Laws
- CH 870 Magnet & its Properties
- CH 871 Electro magnetic Induction
- CH 1078 Simple Electric Circuit
- CH 1079 Electro Magnetic Spectrum
- Phy 07 Static Electricity
- Phy 08 Motor
- Phy 09 Generator
- CH 1080 AC Circuits
- CH 1081 Magnetic Circuits
- CH 1082 Hysteresis Curve
- CH 1083 Maxwell's Equations
- CH 1084 Hall Effect
- CH 1085 Hydro Electric Power Project (DAM)

SOLID STATE PHYSICS

- CH 872 Types of Crystal Structure
- CH 1088 X-Ray Diffraction & Bragg's Law
- CH 1089 Bragg's Spectrometer

ELECTRONICS

- CH 857 Semi-Conductor-I
- CH 858 Semi-Conductor-II
- CH 860 Oscillators
- CH 861 Logic Gates
- CH 862 Transistor characteristic
- CH 863 Triode Characteristics
- CH 864 Rectifiers
- CH 865 Electronic Symbols-I
- CH 866 Electronics Symbols-II
- CH 1517 Diac & Triac

- CH 1519 Feedback amplifiers
- CH 1520 Multistage amplifiers
- CH 1521 O.P. amplifiers
- CH 1523 Diodes-I
- CH 1524 Diodes-II
- CH 1525 Transformers
- CH 1526 Dynamos
- CH 1535 Flip Flops : SRTD
- CH 1536 Flip Flops : JK Master Slave
- CH 1537 Shift Register Types
- CH 1539 ADC Techniques
- CH 1540 DAC Techniques
- CH 1529 Cathode Ray Oscilloscope
- CH 1092 Solar Cell

SPACE / COMMUNICATIONS

- CH 1095 The Solar System
- CH 1096 Solar & Lunar Eclipses
- CH 1097 Galaxies
- CH 1503 Frequency Modulation
- CH 1507 Satellite Communications
- CH 1508 Electromagnetic Frequency Spectrum
- CH 1546 Digital Modulation

MICROPROCESSORS

- CH 1510 8085 Block diagram
- CH 1511 8085 Pin layout
- CH 1545A 8086 Instruction set
- CH 1545B 8086 Instruction set
- CH 1513 8255A The Programmable Peripheral Interface
- CH 1514 8155 & 8755 The Programmable Device
- CH 1530 555 Pin diagram & architecture
- CH 1531 555 Multi Vibrators
- CH 1542 8051 Block Diagram
- CH 1543 8051 Instruction set
- CH 1544 8051 SFR. Special Function Registers
- CH 1550 8085 Interrupts
- CH 1556 Strain Gauges



CH 870

WORKING MODELS

- DPM 1. 2 Stroke Diesel Engine
- DPM 2. 2 Stroke Petrol Engine
- DPM 3. 4 Stroke Diesel Engine
- DPM 4. 4 Stroke Petrol Engine
- DPM 5. Steam Engine Single Piston
- DPM 6. Wind mill impact type
- DPM 7. Electric Motor Model superior
- DPM 8. Hydro Power Project
- DPM 9. Traffic Light Model
- DPM 10. Generator Model in Acrylic case (Generates approx 15v energy)
- DPM 11. Dynamo Model
- DPM 12. Compact Plastic framed Solar System
- DPM 13. Electric bell demonstration model
- DPM 14. Solar energy 9 in 1 kit { Fan, Transistors, Torch, Buzzer, Led, Calculator, Battery, Meter, }

DEMONSTRATION KITS

- DPM 15. Basic Soldering kit
- DPM 16. Electric & Magnetic kit
- DPM 17. Fundamentals of Electricity
- DPM 18. De-Mountable Transformer
- DPM 19. Basic in Electricity
- DPM 20. Magnetic Field Demonstration
- DPM 20A. Magnets kit
- DPM 21. Free fall apparatus (to calculate 'g')
- DPM 22. Archimedes principle kit
- DPM 23. Ray optics kit with power supply
- DPM 24. House wiring kit

OTHERS

- DPM 24A. Deflection of Sound Apparatus
- DPM 25. Tuning Fork, Superior Quality (Set of 8) with Calibration Certificate
 - (a) Blue Steel
 - (b) Aluminium (Heavy Pattern)
- DPM 26. Vernier Calliper Wheel Type 12cm Stainless Steel
- DPM 26A. Vernier Caliper Wooden Model for demo
- DPM 26B. Vernier Microscope
- DPM 27. Screw Gauge
- DPM 28. Searle's Apparatus (Young Modulus)
- DPM 29. Boyle's Law Apparatus (Supplied without Mercury)
- DPM 30. Hooks's law Apparatus (Superior Big)
- DPM 45. Platinum Resistance Thermometer
- DPM 46. Portable Wheatstone Bridge
- DPM 51. Potentiometer with Pencil Jockey
 - (a) 10 wire
 - (b) 4 wire
- DPM 52. Meter Bridge with Pencil Jockey.
- DPM 53. Sono-Meter Brass with all Accessories.
- DPM 54. Inclined Plane With all Accessories.
- DPM 55. Parallelogram Apparatus with all Accessories
 - (a) Wall Mounting
 - (b) Wooden Stand
- DPM 56. Optical Bench 1Meter
 - (a) Brass (High quality finish)
 - (b) Wooden (High quality finish)
- DPM 57. Resonance Column Apparatus
- DPM 58. Surface Tension Balance Jaeger (Having a wide mouth reagent bottle fitted with a cork having two holes, in one hole a dropping funnel is fitted. Complete with manometer, capillary tube. All mounted on suitable wooden stand. Without aspirator.)
- DPM 60A. Vandee graff Generator hand driven
- DPM 60B. Vandee graff Generator motor driven superior
- DPM 60C. Vandee graff Generator Acrylic tube
- DPM 61. Wimshurst 10" Electrostatic Generator
- DPM 62. Gold Leaf Electroscope
- DPM 63. Tangent Galvanometer Brass
- DPM 64. Ticker Tape timer
- DPM 65. Astronomical Telescope
- DPM 66. Reflection and refraction box /tank
- DPM 67. Newtonian Third laws of motion
- DPM 68. Newton's Colour Disc 8" Acrylic Screen
- DPM 69. Bio Gas Model



DPM 53



DPM 52



DPM 14



DPM 31



DPM 33



DPM 34



DPM 35

MEASURING Meters

EDM-80 SQUARE It is housed in Clear Transparent Front with Accuracy ± 2 F.S.D. ; Scale Length 65mm; Overall Size : 12x8x8.5 cm approx.

DPM 30A. Ammeter (0-3 Amp)

DPM 30B. Milli-Ammeter (500mA)

DPM 30C. Micro-Ammeter (500mA)

DPM 31A. Voltmeter (0-3V)

DPM 31B. Milli-Voltmeter (500mV)

DPM 32. Galvanometer (30-0-30) 20 μ A/div.

DPM 33. Digital Meter Size 10X10X14 cm ; LCD display 3.5 of digit ; 9v battery operated.

DPM 34. Demonstration Vertical meter ; Scale Length - 80mm; Size : 11.5X11.5X17.5cms; Stand Wooden With Sunmica; Accuracy : 2.5 fsd.

DPM 35. OHM^r Meter Size 10X10X14 cm ; It is housed in unbreakable ABS case with clear transparent front cover and operated on 1.5V AA cell

******Customised meters can be prepared as per your specifications******

Power Supplies

DPM 36A. D.C. Regulated Power Supply 0-15V / 2ADC (2150/-)

DPM 36B. D.C. Regulated Power Supply 0-30V / 3ADC (2800/-)

DPM 37. Battery Eliminators 2-12V DC/ 2A in steps of 2 Volts (550/-)

DPM 38. I.C. Regulated Power Supply 2-12VDC / 2A in steps of 2 Volts (950/-)

MEASURING Resistances

DPM 40. Resistance Box Plug Type :- fitted with rectangular brass metal heavy blocks & spray painted box. Coins are connected with double nut system. Accuracy 0.02 to 0.1%; Range in 'ohms' Magnanin Coil

(a) 0.1 to 1ohms (b) 1 to 10 ohms (c) 1 to 100 ohms (d) 1 to 1000 ohms (e) 1 to 10000 ohms

DPM 41. Dial Resistance Box:- Designed for quick and accurate work. The resister values on thick Bakelite sheet and read by a pointer. Each dial consists of 10 steps, provided with Manganin Coils 'A' Grade, Accuracy $\pm 0.05\%$

(a) 1 dial (b) 2 dial (c) 3 dial (d) 4 dial (e) 5 dial

DPM 42. Post Office Box Plug type:- Fitted with 7/16" square block with Manganin coils, accuracy $\pm 0.05\%$

(a) 3 Ratio (b) 4 Ratio

DPM 43. Decade Condensor (Capacity Box) Dial Type:-

(a) 1 dial 0.001mfd/ 10/ 0.01mfd (b) 2 dial 0.001 and 0.01mfd/ 20/ 0.1mfd

DPM 44. Rheostat 4.3cm Dia tube wound with heavily oxidised Eureka wire and mounted on duco painted metal feet provided with laminated brush contacts of phosphor bronze strips, Brass C.P. Guide rod and lock type terminals.

(a) Size 6" (15 to 1000 ohms) (b) Size 8" (30 to 1200 ohms)

(c) Size 10" (50 to 1500 ohms) (d) Size 12" (70 to 2200 ohms)

******Customised Resistance Box/ Rheostat can be prepared as per your specifications******



DPM 40



DPM 43



DPM 44

Laminated Framed on Board Small Size 12"x18" MEDIUM SIZE 16"x21" big Size 20"x26"
LAMINATED & ATTACHED PLASTICS ROLLERS JUMBO Size 30"x40"

Dbios, introduces for the first time, in India **Big Sized** multicolored photographs with their achievements in the lightened shades of the photograph to give better understanding to students to correlate famous works with scientist. Each Scientist Photographs comes with detailed descriptions in the fields of their Academics, Works, Designations, Publishing and Awards / Honours.

PHYSICIST

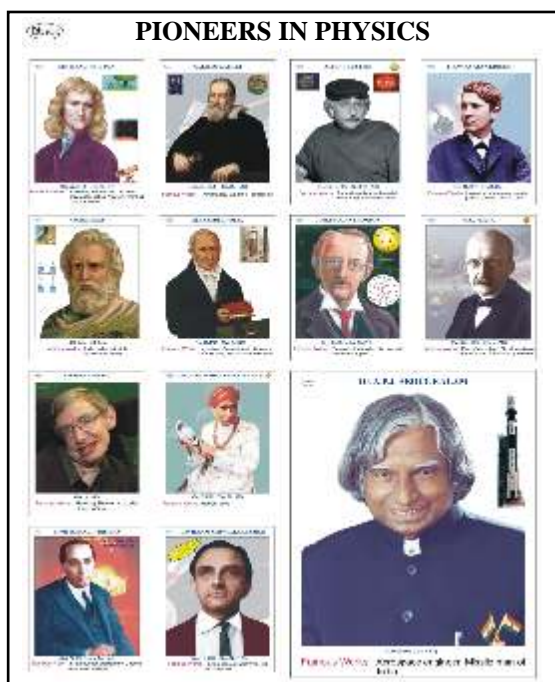
- SP 12 Maghnath Saha
- SP 13 Galileo Galilei
- SP 14 Issac Newton
- SP 15 Sir C.V. Raman
- SP 16 Homi Jehangir Bhabha
- SP 17 J.J. Thompson
- SP 18 Neils Bohr
- SP 20 Archimedes
- SP 21 Erwin Schrodinger
- SP 23 Albert Einstein
- SP 31 Ernest Rutherford
- SP 40 Dr. Vikram Sarabhai
- SP 41 K.S. Krishnan
- SP 44 A.P.J. Abdul Kalam
- SP 46 Thomas Alva Edison
- SP 70 Raja Ramanna
- SP 71 Stephen William Hawkins
- SP 72 Rakesh Sharma
- SP 73 Max Planck
- SP 74 James Clark Maxwell
- SP 75 Wilhelm Roentgen
- SP 76 James Joule
- SP 77 Johnnes Keppler
- SP 78 Coppernicus
- SP 79 Ptolemy
- SP 80 Heike K. Onnes
- SP81 S. Chandershekar
- SP82 Satyander Nath Bose
- SP83 Benjamin Franklin
- SP 151 Dorothea Crowfoot Hodgkin
- SP 152 Wilhelm Ostwald

CHEMIST

- SC 24 Madam Curie
- SC 25 Friedrich Wohler
- SC 26 John Dalton
- SC 27 Gibert Newton Lewis
- SC 28 Dimitri I. Mendeleev
- SC 30 Michael Faraday
- SC 32 Alfred Nobel
- SC 35 Dr. S.S. Bhatnagar
- SC 36 Joseph Priestley
- SC 37 Humphry Davy
- SC 39 Venky Ramakrishnan
- SC 85 Robert Boyle
- SC 86 J.J. Berzelius
- SC 87 Henry Bacqueral
- SC 88 F.A. Kekule
- SC 89 Avogrado
- SC 90 James Chadwick
- SC 91 Robert Bunsen
- SC 92 Fritz Haber
- SC 93 Hermann Staudinger
- SC 94 Willard Libby
- SC 95 Linus Pauling
- SC 96 Hans Krebs
- SC 97 Stanley Miller
- SC 98 John Fenn
- SC 99 E.D. Jemmis
- SC 100 Paul Dirac
- SC 101 John von newmann
- SC 102 Enrico fermi
- SC 103 Jean-Baptiste Joseph Fourier
- SC 104 Ashish Prasad Mitra

ELECTRONIC

- DE 01 Guglielmo Marconi
- DE 02 Christiaan Huygens
- DE 03 John Ambrose Fleming
- DE 04 Alexander Graham Bell
- DE 05 P.S. Laplace
- DE 06 Clarence Zener
- DE 07 Julius Edgar Lilienfeld
- DE 08 William Shoekley
- DE 09 Alexander Volta
- DE 10 James Clark Maxwell
- DE 11 Max Plank
- DE 12 Johannes Kepler
- DE 13 Max Born
- DE 14 Jack Kilby
- DE 15 Sherman Fairchild
- DE 16 Andre-Marie Ampere
- DE 17 Georg Simon Ohm
- DE 18 Gustav Robert Kirchhoff
- DE 19 Joseph Henry
- DE 20 Heinrich Rudolf Hertz
- DE 21 Nikola Tesla
- DE 22 Samuel F. B. Morse
- DE 23 John Logie Baird
- DE 24 Edwin H. Armstrong
- DE 25 John Bardeen
- DE 26 Bob Wildar
- DE 27 Lord Kelvin
- DE 28 Cloude Shannon
- DE 29 Edward Hawry Norton
- DE 30 L.C. Thevenin
- DE 31 Narinder Singh Kapany
- SCP 64 William Gates
- DGP 41 R. Noyce & G. Moore
- DGP 44 Steve Jobs
- DGP 45 Steve Wozniak



FAMOUS SCIENTIST IN ONE JUMBO (30X40") LAMINATED CHART

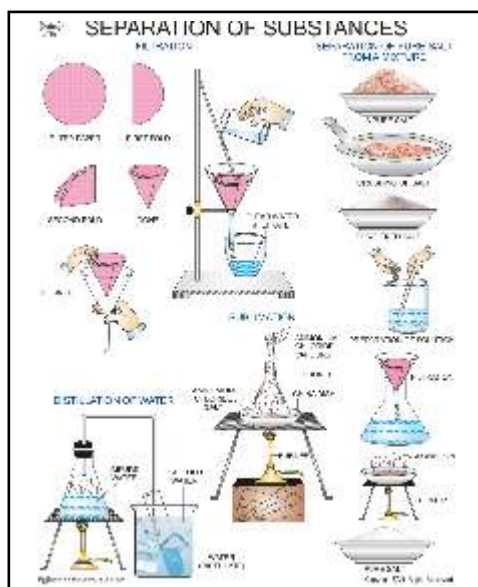
- BgC 1 Famous Indian Scientists
- BgC 2 Great Indian Scientists
- BgC 3 Pioneers in Chemistry
- BgC 4 Pioneers in Biology
- BgC 5 Pioneers in Physics
- BgC 6 Prime Ministers of India
- BgC 7 President of India
- BgC 8 Computer Pioneers
- BgC 9 Famous Writers
- BgC 10 Famous Mathematician
- BgC 11 Famous Artist
- BgC 12 Sports Personalty
- BgC 13 Bharat Ratan I
- BgC 14 Bharat Ratan II
- BgC 15 Bharat Ratan III
- BgC 16 Indian Nobel Prize Winners



Ask for other Scientists for

- 🌿 Botany
- 🌍 Geography
- 🦋 Zoology
- ✍️ Writers
- 🔢 Mathematics
- 💻 Computers
- 🏆 Sports
- 📖 Library

Chemistry- total 89 Charts



CH 909

- DCM 86. Basic cards for Periodic Table {Especially for High Schools }
- DCM 87. Knowing your Periodic Table & Families { A Fun pack of flash cards Epecially for Senior Secondary School}

GENERAL

- CH 877* Periodic Tables of the Elements
- CH 877 Periodic Tables of the Elements
- CH 877A Jumbo Periodic Table (48"x60")
- CH 877B Mendeleev Periodic Table
- CH 877C Characteristics of Periodic Table
- CH 939 First Aid in Laboratory
- CH 940 Laboratory Safety Measures
- CH 941 Techniques Used in Laboratory

PHYSICAL

- CH 878 Shapes of atomic Orbitals
- CH 879 Relative Energies of Orbitals
- CH 880 Formation of Molecular orbitals
- CH 881 Geometry of Molecules - I
- CH 882 Geometry of Molecules - II
- CH 886 Structure of Ionic Solids
- CH 872 Types of Crystal Structure
- CH 888 3D Arrangement in Solids
- CH 907 Types of Cells
- CH 909 Separation of Substances
- CH 915 Liquefaction of Gases
- CH 930 Lattice Defects
- CH 932 Michaelis Menten Equation

* Polyart Periodic Table

Website: www.dbioscharts.com

- CH 938 Radioactivity
- CH 1060 Structure of Atom
- CH 868 Atomic Reactor
- CH 869 Nuclear Fission & Fusion

ORGANIC

- CH 883 Hybridisation
- CH 884 Orbital Structure of Benzene
- CH 885 Confirmation in Hydrocarbons
- CH 889 Structural Isomerism Part - I
- CH 890 Structural Isomerism Part - II
- CH 891 Stereoisomerism Part - I
- CH 892 Stereoisomerism Part - II
- CH 897 Refining of Petroleum
- CH 926 Preparation of CH_4 , C_2H_4 & C_2H_2

CH 934 Chromatography

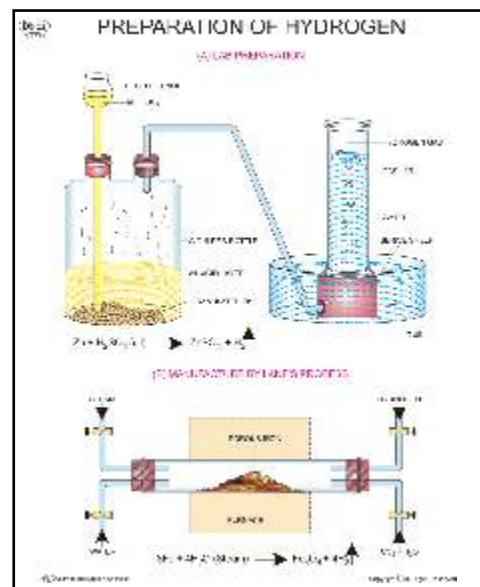
INORGANIC

- CH 893 Estimation of Nitrogen
- CH 894 Determination of Molecular Mass
- CH 898 Preparation of Oxygen
- CH 899 Preparation of Hydrogen
- CH 900 Preparation of Nitric Acid
- CH 901 Manufacture of Ammonia
- CH 902 Manufacture of Sulphuric Acid
- CH 903 Preparation of Carbon Dioxide
- CH 904 Preparation of Hydro chloric Acid
- CH 896 Extraction of Metals
- CH 905 Extraction of Aluminium
- CH 906 Extraction of Copper
- CH 912 Oxidation & Reduction
- CH 920 Extraction of Iron
- CH 923 Distillation
- CH 924 Soap Manufacturing
- CH 927 Principle of Extraction
- CH 936 pH Scale
- CH 937 Electrolysis
- CH 942 Chemical Bonding
- CH 943 Manufacturing of Cement
- CH 945 Organo-metallic Compounds
- CH 946 Chemical Analysis of food Articles
- CH 947 Manufacturing of Glass
- CH 948 Manufacturing of NaOH

COLLEGE LEVEL

- CH 845 Particle accelerator-Cyclotron
- CH 846 Nuclear Radiation Detectors-I
- CH 846A Nuclear Radiation Detectors-II
- CH 917 Synthetic Polymers
- CH 918 Natural & Synthetic Rubbers
- CH 929 Corrosion
- CH 935 Synthetic Dyes
- CH 951 Phase diagram of one component system
- CH 952 Phase diagram of two

- component system
- CH 953 Boiler Problems
- CH 954 Softening of water
- CH 955 Desalination of water
- CH 956 Corrosion control
- CH 957 Types of Mechanism of Corrosion
- CH 958 Physical Properties of Lubricants
- CH 959 Chemical Properties of Lubricants
- CH 960 Polymer Composites
- CH 961 Titrimetric Methods of Analysis
- CH 962 Determination of Alkalinity of Water
- CH 963 Determination of Hardness by EDTA Method
- CH 964 Determination of Viscosity by Red Wood Viscometer
- CH 965 Determination of Flash point by Pensky Martin's Apparatus
- CH 966 Preparation of Urea
- Formaldehyde Resin
- CH 967 Preparation of Phenol
- Formaldehyde Resin
- CH 970 Treatment of water for domestic use.
- CH 971 Types of Mechanism of Corrosion
- CH 972 Types of Electrochemical Corrosion
- CH 973 Mechanism of Lubrication
- CHEM 01 Allotropes of Carbon
- CHEM 02 Mole Concept



CH 899

e-mail : desh@dbios.org

Three Dimensional Demonstration are prepared in acrylic show case & further packaged in superior cardboard boxes to make it durable life long. A Rare collection of Ball & Stick Models.

- DCM 47. Advanced Jr. Atomic Model set (47 balls+35 links) with flexible connectors & advanced balls.
 DCM 48. Advanced Sr. Atomic Model set (100 balls+86 links) with flexible connectors & advanced balls. 100 Atom parts, open and loose models. This set Enables the teachers to demonstrate to Various Molecular Shapes of **Benzene; Silver Nitrate, Methyl-amine, Sulphuric acid, Methanol & many more**

Details inside :- Balls

Carbon (Black)-12;	Sulphur (Yellow)-13;
Oxygen (Red)-22;	Nitrogen (Blue)-10;
Metal (Gray)-11;	Phosphorus (Purple)-7;
Halogen (Green)-8;	Hydrogen (White)-14;
Metal small (Grey)-3;	Flexible big link-36;
Flexible small link-50	

- DCM 49. Jr. Atomic Model set (37 sticks+75 balls)
 DCM 50. Sr. Atomic Model set (185 sticks+370 balls)
 DCM 51. Atomic Model (Set of 5)
 1. Water H_2O 2. Chlorine Cl_2
 3. Ammonia NH_3 4. Sulphur S
 5. Phosphorous P
 DCM 52 Atomic Model set of 10 Hydrocarbon (Carbon Compound)
 1. Methane CH_4 2. Ethane C_2H_6
 3. Propane C_3H_8 4. N-Butane C_4H_{10}
 5. Iso-Butane C_4H_{10} 6. Neo-Pentane C_5H_{12}
 7. N-Pentane C_5H_{12} 8. Iso-Pentane C_5H_{12}
 9. Ethylene C_2H_4 10. Acetylene C_2H_2

- DCM 58. Diamond crystal model
 DCM 59. Graphite crystal model
 DCM 60. Sodium chloride crystal model
 DCM 61. Structure of Atom (Arrangement of electrons in atom)
 DCM 62. Model of Atoms (set of 3)
 {Structure of Atom, Orbits of Atom, Isotopes of Hydrogen Atom}
 DCM 63. Formation of Ions (set of 3)
 {Sodium, Chlorine & Magnesium}
 DCM 64 Covalent bonds (set of 4)
 {Hydrogen, Chlorine, Oxygen, Water}
 DCM 65 Models on Molecules (set of 5)
 {Hydrogen, Helium, Oxygen, Sulphur, Yellow Phosphorous}
 DCM 66 Structure of Molecules (set of 3)
 {Oxygen, Hydrogen, Silicon}
 DCM 71. Nuclear chain Reaction model.
 DCM 72. Nuclear Reactor model.
 DCM 73. Nuclear Fusion model.
 DCM 78. Fullerene crystal model C 90
 DCM 79. Budget Bucky Ball C 60
 DCM 80. Bucky Tube (Carbon Nano Tube)

- DCA 01 Digital Balance cap. 200gm h.c.o.01 (10mg)
 DCA 02 Pinsky Martin flash point apparatus
 DCA 03 pH meter (Digital) table pattern
 DCA 05 Bunsen burner superior for university lab
 DCA 06 Bunsen burner without stopcock
 DCA 07 Bunsen burner with stopcock
 DCA 08 LECLANCHE CELL (Complete) Includes Filled Porous Pot, Zinc Rod & Plastic Jar
 DCA 09 DANIEL CELL (Complete) Includes Copper Pot, Empty Porous Pot & Zinc Rod
 DCA 10 DRY CELL (2Volt)
 DCA 11 VOLTIC CELL (simple Cell) Consists of Copper & Zinc Plate in plastic Jar

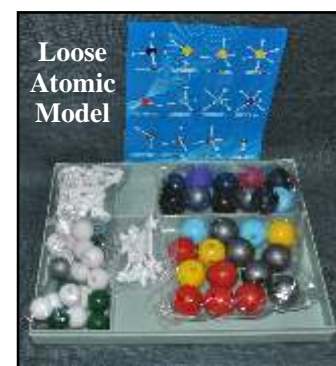
Ask For
First Aid Box



DCA 05



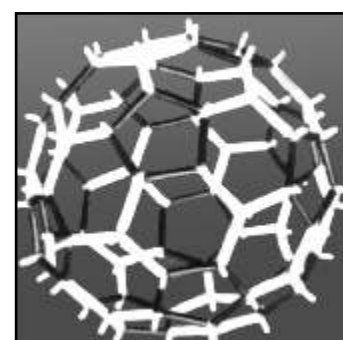
DCA 07



DCM 49



DCM 51



DCM 78

Ask for Skeleton & Other Human Models

Ask for special discounts on Chemical and Glasswares.

ACTIVITIES SET

- DCM 81. Electrolysis of Copper Purification.
- DCM 82. Electrolysis (Water) Apparatus.
- DCM 83. Electroplating Apparatus.
- DCM 84. Purification of metal by froth flotation
- DCM 85. Corrosion & its preventive Measures
- DCM 88. Reaction of Acids / Bases with metals.
- DCM 89. Acid solution conducts electricity
- DCM 90. Preparation of HCL gas
- DCM 91. Prparation of Soda-acid fire extinguisher.
- DCM 92. Chromatography
- DCM 93. Lab safety demonstration for liquids.



DCM 83



DCM 82



DCM 87

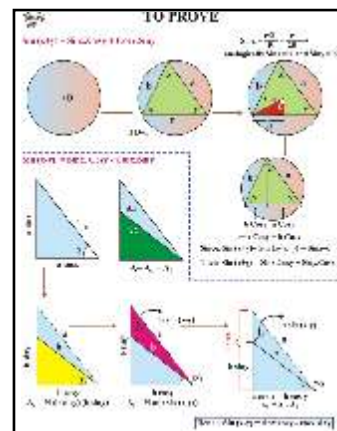
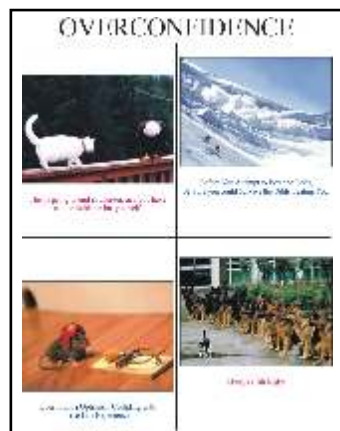
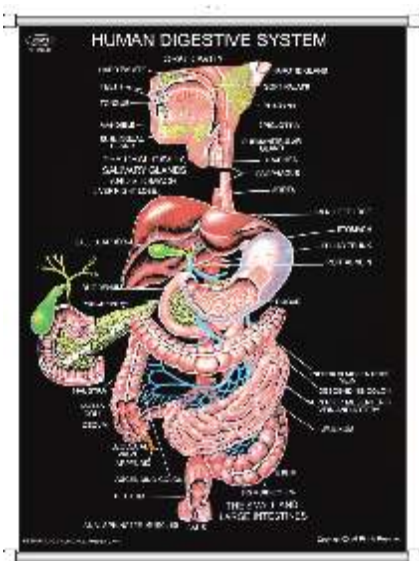


DCM 86

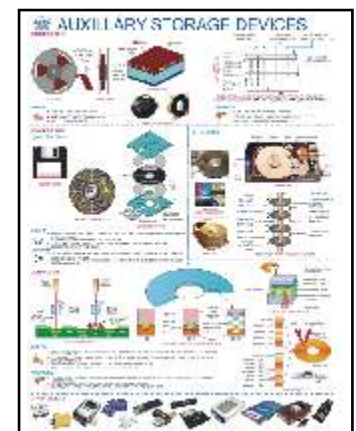


Ask for other Catalogues on

- 🌿 Botany
- 🌿 Zoology
- 🌿 Mathematics
- 🌿 Sports
- 🌿 Geography
- 🌿 English
- 🌿 Computers



DM 17



DM 2103

DESH BIOLOGICAL WORKS

#1245, Hargoolal Road, Ambala Cantt-133 001, Haryana(INDIA)
Ph.: 0171-4007531, 2643822, Mob. 09896662901, 09729010431

Website : www.dbioscharts.com, e-mail : desh@dbios.org, deshbiological@gmail.com