



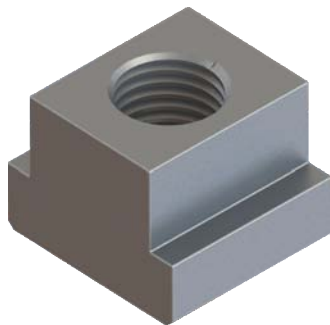
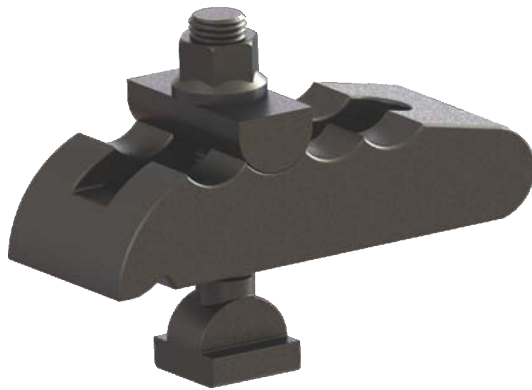
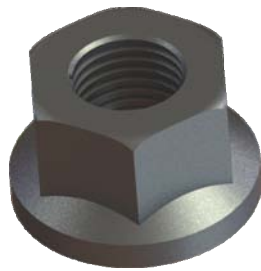
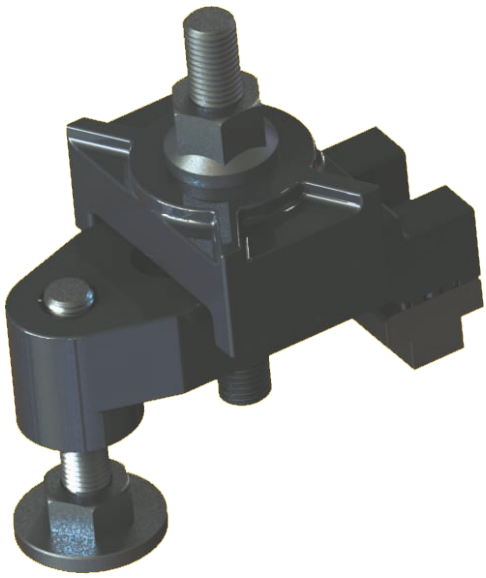
Product Catalog  
2018

## INTRODUCTION

Clamp Smith caters to the need of all Injection Moulding, Die Casting, Sheet Metal & Machine Shops for Die/Mold Clamping. We constantly develop new Product range as per compliance with different demands & needs of our consumers. From conceptualization to execution, from drawing to production, there's just one single largest force that drives us, our CUSTOMERS. We focus on 100% Customer Satisfaction.

## COMPANY PURPOSE, VISION & MISSION

MISSION	"To exceed customer expectation in quality, delivery and cost through continuous improvement and customer satisfaction."
VISION	"To be the supplier of choice in every industry we serve."
PURPOSE	"Continuous Value Creation for Customers"

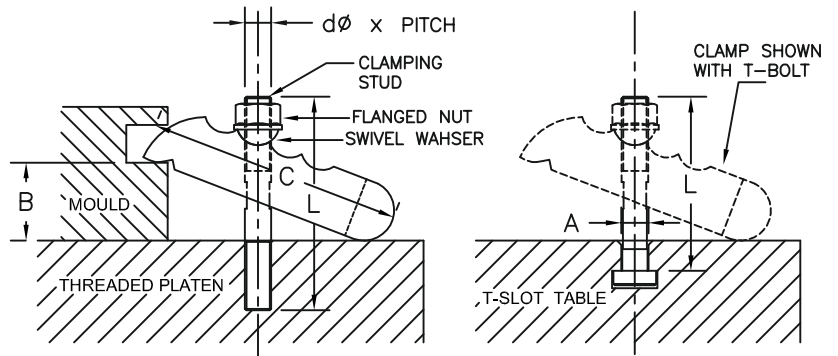
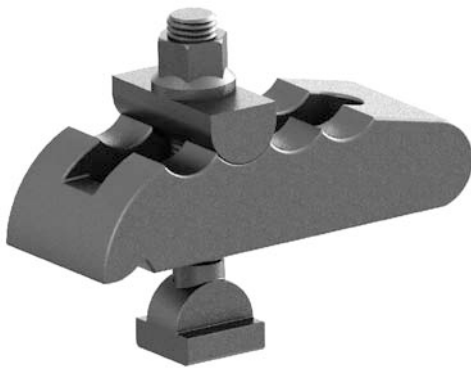




## MOULD CLAMP

For Plastic Injection Moulding & Pressure Die Casting Machines

It is one of the conventional type clamping system made up of S.G.I steel in 500/7 grade. Used in clamping of heavy moulds on plastic injection moulding machines and pressure die casting machines. Its adjustable swivel washer adjust the height automatically with the help of grooved curve on upper portion of clamp. It comes with threaded Stud or T-bolt as suitable.



### MOULD CLAMP - WITH T - BOLT

MODEL	dø x PITCH X L	T-SLOT SIZE A	CLAMPING RANGE B	LENGTH OF CLAMP C	BREADTH OF CLAMP
CSMC-12T	T-BOLT M12 X 1.75 X 125	12	0-35	110	50
CSMC-14T	T-BOLT M12 X 1.75 X 125	14	0-35	110	50
CSMC-16T	T-BOLT M16 X 2.0 X 130	16	0-40	135	60
CSMC-18T	T-BOLT M16 X 2.0 X 130	18	0-40	135	60
CSMC-20T	T-BOLT M20 X 2.5 X 150	20	0-50	160	70
CSMC-22T	T-BOLT M20 X 2.5 X 150	22	0-50	160	70
CSMC-24T	T-BOLT M24 X 3.0 X 210	24	0-60	180	80
CSMC-28T	T-BOLT M24 X 3.0 X 210	28	0-60	180	80

### MOULD CLAMP - WITH "STUD WITH SLOT" (MOULD STUD)

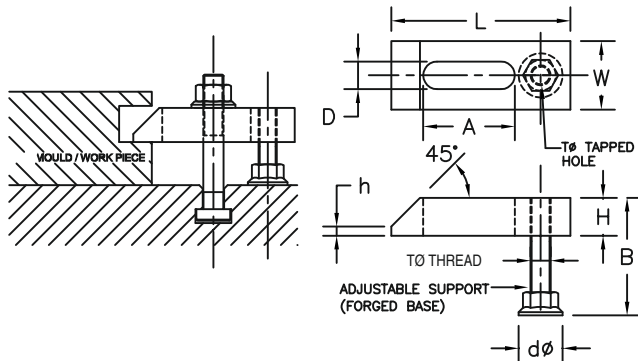
MODEL	dø x PITCH X L	CLAMPING RANGE B	LENGTH OF CLAMP C	BREADTH OF CLAMP
CSMC-12S	STUD M12 X 1.75 X 100	0-35	110	50
CSMC-16S	STUD M16 X 2.0 X 125	0-40	135	60
CSMC-20S	STUD M20 X 2.5 X 150	0-50	160	70
CSMC-24S	STUD M24 X 3.0 X 200	0-60	180	80

## TAPPED END CLAMP-WITH ADJUSTABLE SUPPORT

Hardened & Tempered, Black Finish

Tapped End Clamps are most useful clamps for injection moulding or pressure die casting machine where mould / die is clamped in vertical position, these clamp have adjustable support to adjust the thickness of mould plate.

(Note : T-Bolt or Stud with Nut, Washer etc to be ordered separately.)



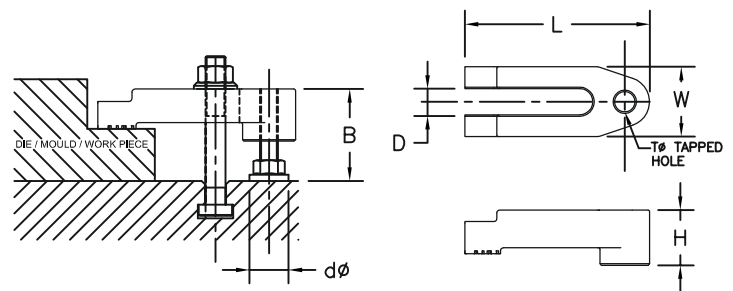
### For Plastic Injection Moulding & Pressure Die Casting Machines

MODEL	D SUITABLE FOR BOLT	L	A	W	H	h	TØ TAPPED HOLE	dØ	B Max
CSTEC-12	M12	110	55	38	18	6	M12	30	60
CSTEC-16	M16	125	60	48	24	8	M16	35	85
CSTEC-20	M20	160	80	60	30	10	M20	38	90
CSTEC-24	M24	200	110	72	38	10	M24	40	100

## U-TYPE SPECIAL MOULD CLAMP

For Plastic Injection Moulding & Pressure Die Casting Machines

It is one of the conventional type clamping system made up of S.G.I steel in 500/7 grade. Used in clamping of heavy moulds on plastic injection moulding machines and pressure die casting machines. It comes with forged stopper bolt for the height adjustment and special washer at top of clamp to move the bolt in slot at desired portion. It is used to clamp different sizes of moulds on same machine through its height adjustment feature. It helps save the time of the operator while changing the mould on machine therefore increase the productivity.



### CLAMP - WITH T-BOLT

MODEL	T-BOLT	D SUITABLE FOR BOLT	CLAMPING RANGE B	LENGTH OF CLAMP L	BREADTH OF CLAMP W
CSTUC-12T	T-BOLT M12 X 1.75 X 125	12	0-60	120	47
CSTUC-14T	T-BOLT M12 X 1.75 X 125	14	0-60	120	47
CSTUC-16T	T-BOLT M16 X 2.0 X 150	16	0-80	130	50
CSTUC-18T	T-BOLT M16 X 2.0 X 150	18	0-80	130	50
CSTUC-20T	T-BOLT M20 X 2.5 X 150	20	0-90	160	60
CSTUC-22T	T-BOLT M20 X 2.5 X 150	22	0-90	160	60
CSTUC-24T	T-BOLT M24 X 3.0 X 210	24	0-95	200	73
CSTUC-28T	T-BOLT M24 X 3.0 X 210	28	0-95	200	73

### CLAMP - WITH "STUD WITH SLOT" (MOULD STUD)

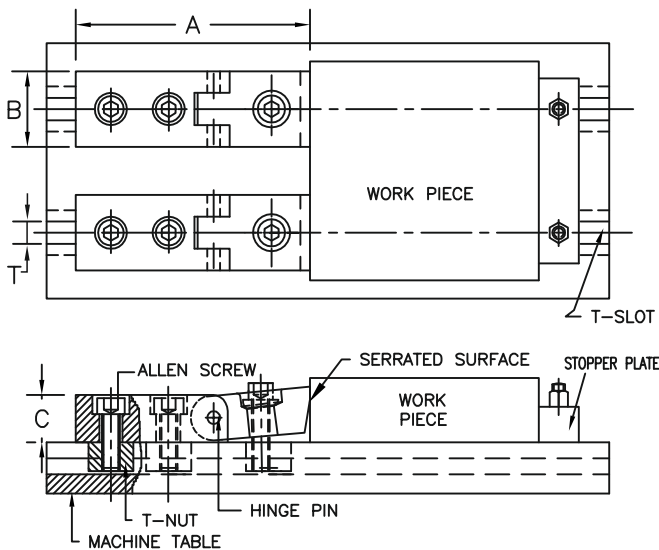
MODEL	Stud with Slot	D SUITABLE FOR BOLT	CLAMPING RANGE B	LENGTH OF CLAMP L	BREADTH OF CLAMP W
CSTUC-12S	M12 x 100	12	0-60	120	47
CSTUC-16S	M16 x 125	16	0-80	130	50
CSTUC-20S	M20 x 175	20	0-90	160	60
CSTUC-24S	M24 x 200	24	0-95	200	73



## LOW HEIGHT PINCH CLAMP

For Machining Center, Milling, Shaping, Planning, Jig-Boring Etc.

Used in machining centre, milling, shaping, planning, jig boring, etc. This clamp is useful for job clamping where complete top surface of job is to be machined in one setting & hence can be clamped only from side faces. When serrated front portion is pressed against the job by tightening the front bolt, it gives a downward as well as forward clamping force. It is made up of hardened steel & supplied with hardened T-nuts & Standard Bolts.

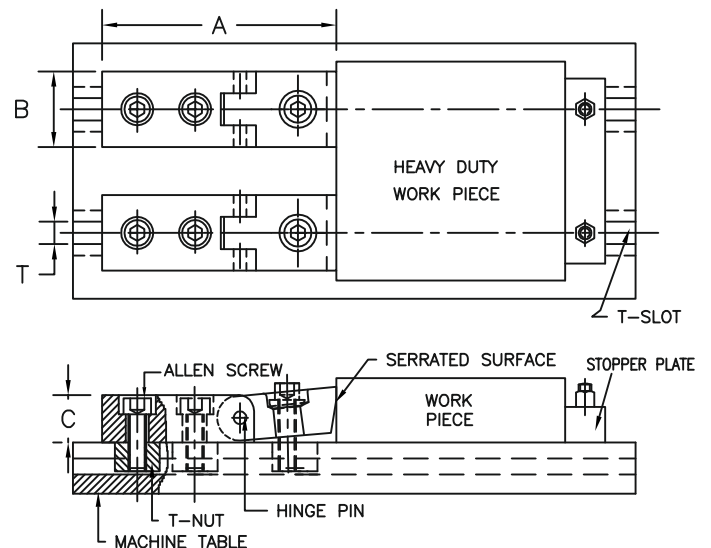


MODEL	SUITABLE FOR T-SLOT SIZE T	TOTAL LENGTH A	BREADTH B	HEIGHT C
CSPC-12	12	115	30	15
CSPC-14	14	115	30	15
CSPC-16	16	145	38	18
CSPC-18	18	145	38	18
CSPC-20	20	180	48	24
CSPC-22	22	180	48	24
CSPC-24	24	180	48	24
CSPC-28	28	180	48	24

## HEAVY DUTY PINCH CLAMP

For Machining Center, Milling, Planning, Plano-Milling Etc.

These Clamps are offered in heavier version of the above clamp for clamping heavy blocks. Basic function is same but this is used for clamping from sides of heavy blocks or thicker plates for facing top face in one setting. It is made up of hardened steel & supplied with T-Nuts & Standard Bolts.

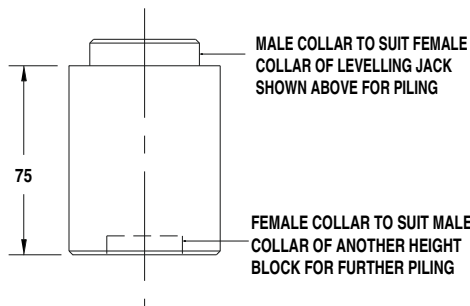
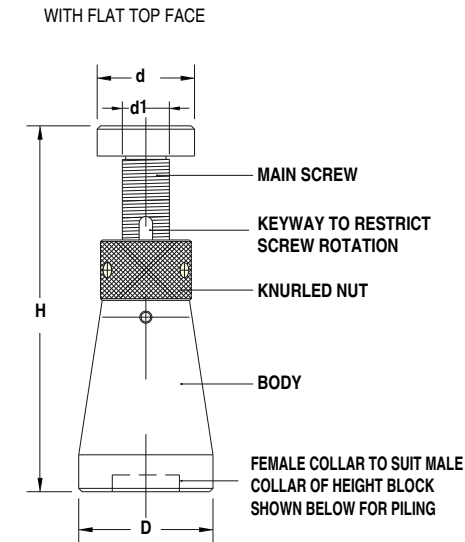


MODEL	SUITABLE FOR T-SLOT SIZE T	TOTAL LENGTH A	BREADTH B	HEIGHT C
CSHDPC-18	18	185	60	38
CSHDPC-20	20	185	60	38
CSHDPC-22	22	185	60	38
CSHDPC-24	24	185	60	38
CSHDPC-28	28	185	60	38



## LEVELLING JACKS & HEIGHT BLOCKS

Levelling jack can be used as an adjustable support block for clamps and as a stopper or levelling block in fixtures or machines, as well as for levelling surface plates or other heavy duty work pieces. Its unique design does not allow the levelling screw to rotate while adjustment, hence makes it suitable for fine level adjustment.



LEVELLING JACK

MODEL	H MIN. AT CLOSED POSITION	H MAX. AT OPEN POSITION	DIA AT BOTTOM D	DIA AT TOP d	DIA OF SCREW d1	TYPE OF TOP FACE
CSLJ-1	75	100	55	38	M-24	FLAT
CSLJ-2	100	150	55	38	M-24	FLAT



HEIGHT BLOCK FOR LEVELLING JACK

MODEL	EFFECTIVE HEIGHT INCREASE WITH ONE HEIGHT BLOCK
CSHBLJ-75	75

## LEVELLING JACK- HEAVY DUTY

Levelling jack-heavy duty is a heavier version of levelling jack with a heavy body and levelling screw & knurled nut. This jack is specially designed for heavy castings & machines. This is also available with flat head levelling screw.

MODEL	H MIN. AT CLOSED POSITION	H MAX. AT OPEN POSITION	DIA AT BOTTOM D	DIA AT TOP d	DIA OF SCREW d1	TYPE OF TOP FACE
CSLJ-HD	160	230	75	50	32Ø	FLAT

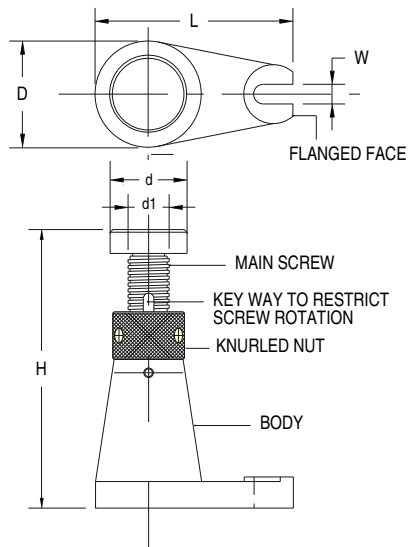
## HEIGHT BLOCK FOR LEVELLING JACK-HEAVY DUTY

As in case of levelling jacks,height block for levelling jack-heavy duty model CSHBLJ-HD-75 is available for piling with levelling jack heavy duty.

MODEL	EFFECTIVE HEIGHT INCREASE WITH ONE HEIGHT BLOCK
CSHBLJ-HD-75	75

## LEVELLING JACK-HEAVY DUTY-FLANGE MOUNTING

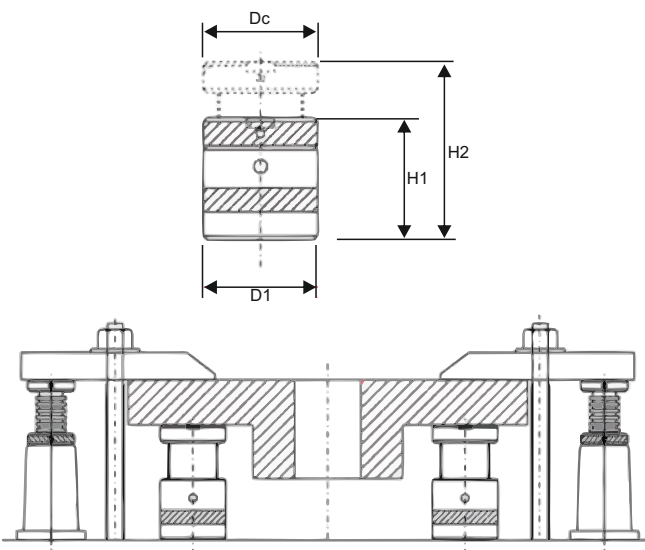
Levelling Jack-Heavy Duty-Flange Mounting is same as CSLJ-HD but with flanged base for mounting on machine bed for additional rigidity.



MODEL	H MIN. AT CLOSED POSITION	H MAX. AT OPEN POSITION	DIA AT BOTTOM D	L	MOUNTING SLOT WIDTH W	DIA AT TOP d	DIA OF SCREW d1	TYPE OF TOP FACE
CSLJ-HD-FB	160	230	75	130	18	50	32Ø	FLAT

## STEEL BODY SCREW JACK

Body and spindle : Medium Carbon steel, Heat treated and blackened.  
Threads: Trapezoidal

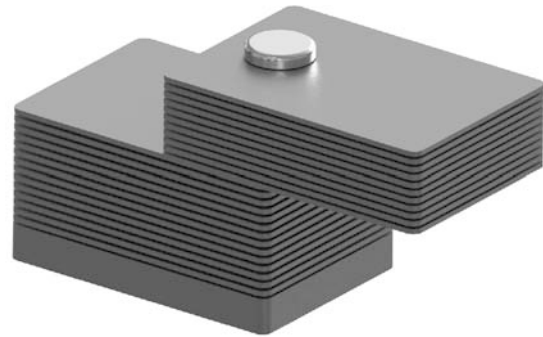
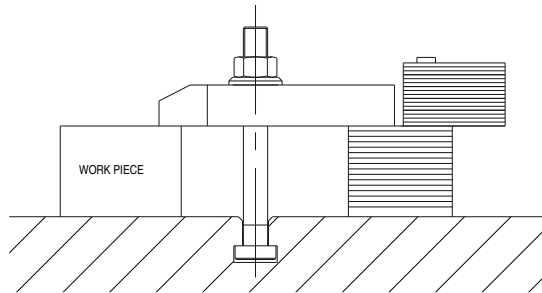


MODEL	RANGE HI-H2	BASE DIA D1	STATIC LOAD MAX KN
CS-SBSJ-40	40-50	32	12
CS-SBSJ-50	50-70	50	60
CS-SBSJ-70	70-100	50	60
CS-SBSJ-100	100-140	70	100
CS-SBSJ-140	140-210	80	165
CS-SBSJ-190	190-300	95	350



## ADJUSTABLE SUPPORT PLATES

Adjustable support plates are used as adjustable support at the rear of the clamp. It comprises of number of plates each 2 mm thick hinged together. Desired height is achieved very easily by swinging aside the required number of plates and using the remaining as support block.

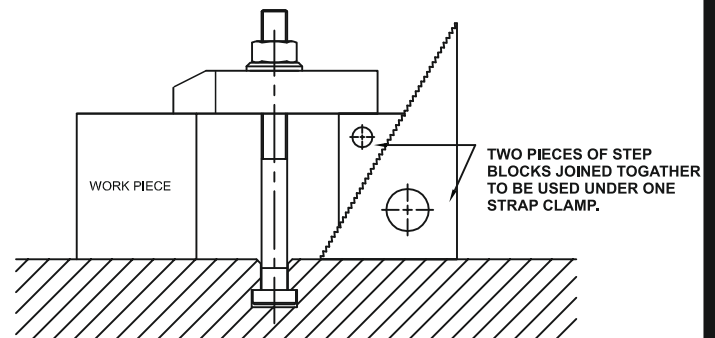


MODEL	MAXIMUM HEIGHT	PLATE THICKNESS	PLATE OVERALL SIZE	SIZE OF CLAMP REST AREA
CSASP-250	50	2	50 X 35	25 X 35
CSASP-2100	100	2	50 X 35	25 X 35
CSASP-2150	150	2	50 X 35	25 X 35

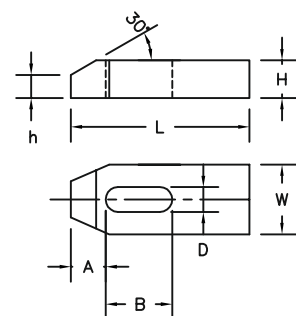
## STRAP CLAMP

Hardened & Tempered, Black Finish

These clamp are widely used for holding press tool and huge casting/dies while machining.



MODEL	D SUITABLE FOR BOLT	L	W	H	A	B	h
CSSC-8-60	M8	60	24	12	13	22	7
CSSC-10-80	M10	80	30	15	15	30	9
CSSC-12-100	M12	100	38	18	21	40	12
CSSC-12-125	M12	125	38	18	21	50	12
CSSC-14-125	M14	125	48	24	26	45	15
CSSC-16-125	M16	125	48	24	26	45	15
CSSC-16-160	M16	160	48	24	26	65	15
CSSC-20-160	M20	160	60	30	30	60	18
CSSC-20-200	M20	200	60	30	30	60	18
CSSC-24-200	M24	200	72	38	35	80	21
CSSC-24-250	M24	250	72	38	35	80	21
CSSC-30-250	M30	250	72	48	45	100	28

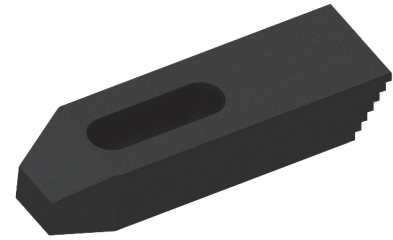
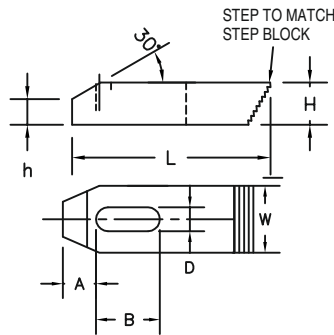
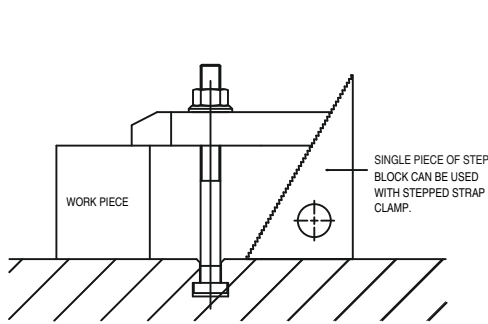




## STEPPED STRAP CLAMP

Hardened & Tempered, Black Finish

These Stepped Strap Clamps have teeth at rear matching to that of Step Blocks to be used as support. Unlike other clamps, single piece of step block (not a pair) can be used as support with Stepped Strap Clamp.

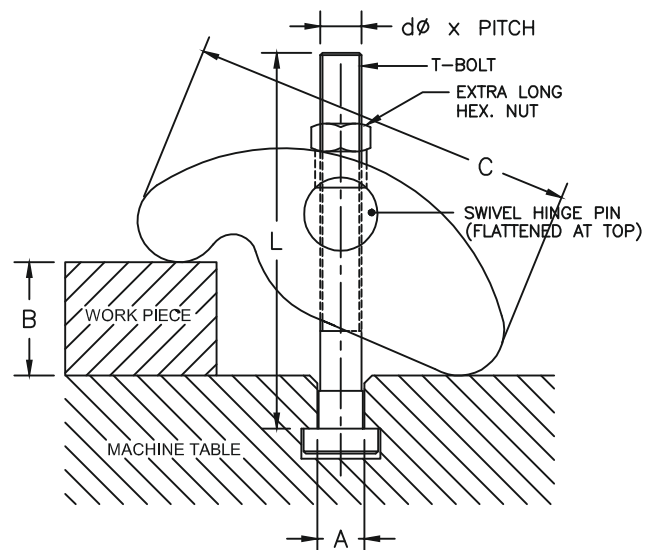


MODEL	D SUITABLE FOR BOLT	L	W	H	A	B	h
CSSSC-12-65	M12	65	30	15	15	25	9
CSSSC-12-100	M12	100	38	18	21	50	12
CSSSC-12-150	M12	150	38	18	21	90	12
CSSSC-16-75	M16	75	38	18	21	30	12
CSSSC-16-125	M16	125	48	24	26	70	15
CSSSC-16-160	M16	160	48	24	26	90	15
CSSSC-20-160	M20	160	60	31	30	85	18
CSSSC-24-200	M24	200	75	38	35	100	21

## UNIVERSAL STRAP CLAMP

For Power Presses, Milling, Drilling, Shaping, Boring Etc.

CLAMP SMITH Universal Strap Clamp is most suitable for die clamping on power presses and a very useful clamp for job clamping on T-slot table of drilling, milling, shaping and other machine tools. It's front portion holds the die and rear portion adjust on the bed of the machine with its design itself.

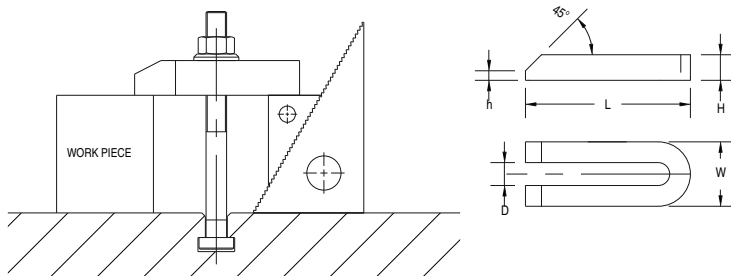


MODEL	T-SLOT SIZE A	dφ x PITCH X L	CLAMPING RANGE B	LENGTH OF CLAMP C	BREADTH OF CLAMP
CSUSC-12T	12	M12 X 1.75 X 125	0-60	105	42
CSUSC-14T	14	M12 X 1.75 X 125	0-60	105	42
CSUSC-16T	16	M16 X 2.0 X 130	0-80	130	50
CSUSC-18T	18	M16 X 2.0 X 130	0-80	130	50
CSUSC-20T	20	M20 X 2.5 X 150	0-100	160	55
CSUSC-22T	22	M20 X 2.5 X 150	0-100	160	55
CSUSC-24T	24	M24 X 3.0 X 210	0-120	190	65
CSUSC-28T	28	M24 X 3.0 X 210	0-120	190	65

## U-CLAMP

Hardened & Tempered, Black Finish

U - Clamp are widely used for repetitive clamping applications frequent insertion and removal of part being clamped

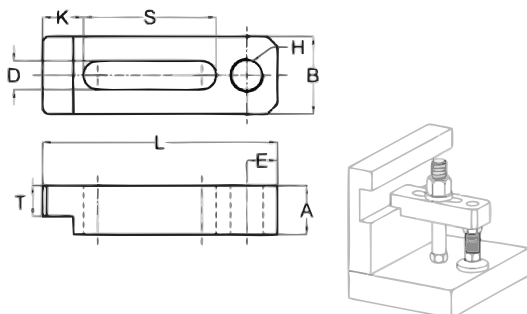


MODEL	D SUITABLE FOR BOLT	L	H	W	h
CSUC-12-160	M12	160	24	38	6
CSUC-16-200	M16	200	30	48	8
CSUC-20-250	M20	250	38	62	10
CSUC-24-250	M24	250	38	62	10

## MOULD CLAMP WITH HEAVY SUPPORT BOLT

Hardened & Tempered, Black Finish

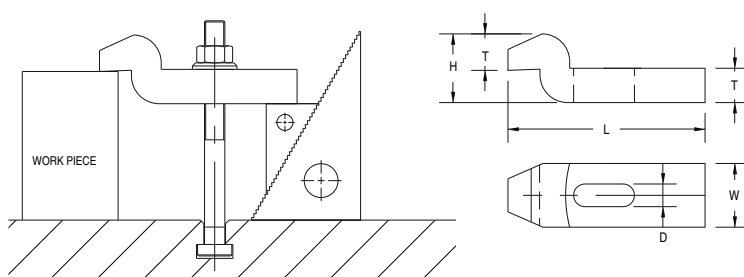
Ideally suited to hold mould on injection moulding machine and die plates on press platen



MODEL	D SUITABLE FOR BOLT	A	B	DxL	S	T	SUPPORT BOLT
CSMCH-12115	M12	24	38	14x115	65	15	M16
CSMCH-16130	M16	31	48	18x130	70	20	M20
CSMCH-16160	M16	31	48	18x160	90	20	M20
CSMCH-20160	M20	42	60	22x160	90	28	M24
CSMCH-20200	M20	42	60	22x200	110	28	M24
CSMCH-24200	M24	45	75	26x200	105	35	M24

## GOOSE NECK CLAMP

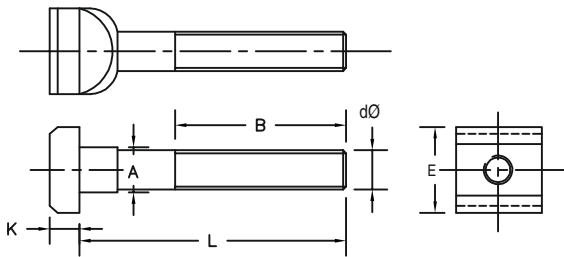
Goose neck clamp are made up of S.G.I Steel in 500/7 grade. Used in holding of press tool and huge castings/dies while machining.



MODEL	D SUITABLE FOR BOLT	L	H	W	T
CSNC-12	M12	125	40	40	20
CSNC-16	M16	160	50	50	25
CSNC-20	M20	200	60	60	30
CSNC-24	M24	250	80	70	40

## T-BOLT

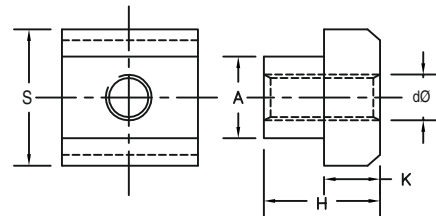
Forged Head, Hardened & Tempered,  
High Tensile Steel, Black Finish  
Application : Clamping Works / Fixtures / Press Tools.



MODEL	A SUITABLE T-SLOT SIZE	dØ THREAD SIZE	L	B	E	K
CSTB-1212-80			80	40		
CSTB-1212-100	12	M12	100	60	18	7
CSTB-1212-160			160	100		
CSTB-1214-80			80	55		
CSTB-1214-100			100	65		
CSTB-1214-125	14	M12	125	80	22	8
CSTB-1214-160			160	100		
CSTB-1214-200			200	125		
CSTB-1214-250			250	155		
CSTB-1616-100			100	65		
CSTB-1616-130	16	M16	130	80	25	9
CSTB-1616-160			160	100		
CSTB-1616-200			200	125		
CSTB-1618-80			80	55		
CSTB-1618-100			100	65		
CSTB-1618-130			130	80		
CSTB-1618-160	18	M16	160	100	28	10
CSTB-1618-200			200	125		
CSTB-1618-250			250	155		
CSTB-1618-290			290	175		
CSTB-2020-110			110	70		
CSTB-2020-150	20	M20	150	95	32	12
CSTB-2020-210			210	130		
CSTB-2022-110			110	70		
CSTB-2022-150			150	95		
CSTB-2022-210	22	M20	210	130	35	14
CSTB-2022-250			250	155		
CSTB-2022-285			285	170		
CSTB-2424-150			150	95		
CSTB-2424-210	24	M24	210	130	40	16
CSTB-2428-110			110	65		
CSTB-2428-150			150	95		
CSTB-2428-210			210	130		
CSTB-2428-250	28	M24	250	155	44	18
CSTB-2428-300			300	200		
CSTB-2428-350			350	230		
CSTB-2428-450			450	300		
CSTB-3036-250			250	150		
CSTB-3036-300	36	M30	320	200	54	22

## T-NUT

Hardened & Tempered, Black Finish  
Application : For use along with studs for work holdings, fixtures, etc,



MODEL	A SUITABLE T-SLOT SIZE	dØ THREAD SIZE	H	K	S
CSTN-10-8	10	M8	12	6	15
CSTN-12-10*	12	M10	14	7	18
CSTN-14-10	14	M10	16	8	22
CSTN-14-12*	14	M12	16	8	22
CSTN-16-12	16	M12	18	9	25
CSTN-16-14*	16	M14	18	9	25
CSTN-18-12	18	M12	20	10	28
CSTN-18-16*	18	M16	20	10	28

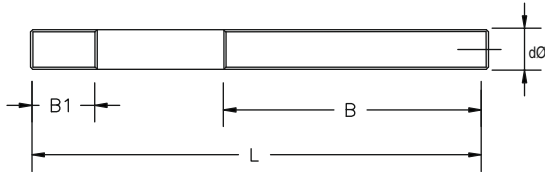
MODEL	A SUITABLE T-SLOT SIZE	dØ THREAD SIZE	H	K	S
CSTN-20-16	20	M16	24	12	32
CSTN-22-16	22	M16	28	14	35
CSTN-22-20*	22	M20	28	14	35
CSTN-24-20	24	M20	32	16	40
CSTN-28-24	28	M24	36	18	44
CSTN-36-24	36	M24	44	22	54
CSTN-36-30	36	M30	44	22	54

\* marked models are not recommended for heavy duty use because of less wall thickness outside the threading.

## CLAMPING STUD (FOR USE WITH T-NUTS)

Hardened & Tempered, High Tensile Steel, Black Finish

These Studs are meant to be used with T-nuts to be tightened on smaller threaded length B1 shown in figure below and longer threaded length B shown in figure below is to accommodate Clamp/Nut/Washer etc.



MODEL	dØ THREAD SIZE	L	B1	B
CSCS-8-75	M8	75	11	48
CSCS-8-100		100		63
CSCS-8-150		150		95
CSCS-10-75	M10	75	13	48
CSCS-10-100		100		63
CSCS-10-150		150		95
CSCS-10-175		175		110
CSCS-10-200		200		125
CSCS-12-75	M12	75	15	48
CSCS-12-100		100		63
CSCS-12-125		125		75
CSCS-12-150		150		95
CSCS-12-175		175		110
CSCS-12-200		200		125
CSCS-12-250		250		160
CSCS-12-300	300	190		
CSCS-14-100	M14	100	17	63
CSCS-14-150		150		95
CSCS-14-200		200		125
CSCS-14-250		250		160

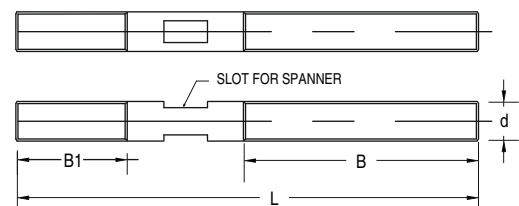
MODEL	dØ THREAD SIZE	L	B1	B
CSCS-16-75	M16	75	19	50
CSCS-16-100		100		63
CSCS-16-125		125		75
CSCS-16-150		150		95
CSCS-16-175		175		110
CSCS-16-200		200		125
CSCS-16-250		250		160
CSCS-16-300	300	190		
CSCS-20-100	M20	100	27	60
CSCS-20-150		150		95
CSCS-20-200		200		125
CSCS-20-250		250		160
CSCS-20-300		300		190
CSCS-20-400		400		250
CSCS-20-500		500		250
CSCS-24-150	M24	150	35	95
CSCS-24-200		200		120
CSCS-24-250		250		160
CSCS-24-300		300		190
CSCS-24-400		400		250
CSCS-24-500		500		250
CSCS-30-150	M30	150	43	95
CSCS-30-200		200		120
CSCS-30-250		250		160
CSCS-30-300		300		190
CSCS-30-400		400		250
CSCS-30-500	500	250		

## STUD WITH SLOT (MOULD STUD)

Hardened & Tempered, High Tensile Steel, Black Finish

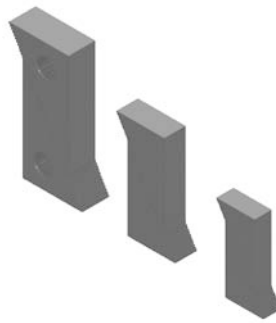
These Studs are used on machine beds having tapped holes. They have longer threaded length on one side for longer insertion in the tapped holes of moulding machines. These studs have a flattened middle portion for tightening and loosening with the help of an open ended spanner.

MODEL	dØ THREAD SIZE	L	B1	B
CSCSB-12-100	M12	100	30	40
CSCSB-12-125		125		50
CSCSB-12-150		150		65
CSCSB-12-175		175		80
CSCSB-16-125	M16	125	40	50
CSCSB-16-150		150		65
CSCSB-16-175		175		80
CSCSB-16-200		200		100
CSCSB-20-150	M20	150	50	60
CSCSB-20-175		175		70
CSCSB-20-200		200		80
CSCSB-24-175	M24	175	60	70
CSCSB-24-200		200		80
CSCSB-24-225		225		90

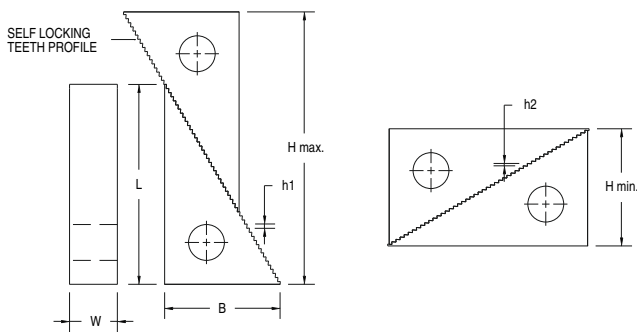


## STEP BLOCKS

Step Blocks are used as adjustable supporting Blocks at the rear of the clamps while clamping the workpiece. Different heights can be achieved by using combination of two different sizes of step Blocks. Available in pairs. (Pair consists of 2 identical Step Blocks) Combination of two Step Blocks of same or different sizes is kept as support under one Strap Clamp. But in case of use of Step Blocks with Stepped Strap Clamp, only one Step Block of suitable size is kept as support under one stepped strap clamp.



Step Block - Heavy duty is different then step block above in width only, more width enables use on bigger T-Slots and also with bigger sizes of Stepped Strap Clamps



### STEP BLOCK

MODEL	L	B	W	HEIGHT ADJUSTMENT		HEIGHT OF STEP h1	HEIGHT OF STEP h2
				H min.	H max.		
CSSB-1	30	18	28	20	42	2.7	1.6
CSSB-2	66	38	28	38	95	2.7	1.6
CSSB-3	117	68	28	70	180	2.7	1.6

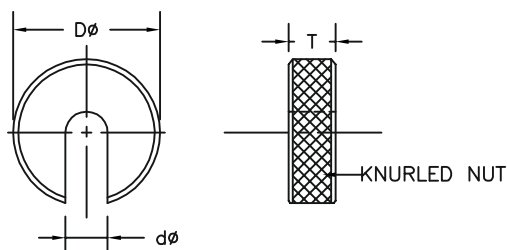
### STEP BLOCK-HEAVY DUTY

MODEL	L	B	W	HEIGHT ADJUSTMENT		HEIGHT OF STEP h1	HEIGHT OF STEP h2
				H min.	H max.		
CSSB-4	66	38	47	38	95	2.7	1.6
CSSB-5	117	68	47	70	180	2.7	1.6
CSSB-6	156	92	47	94	230	2.7	1.6

## C-WASHER

Case Hardened, Black Finish

C-Washer have knurled outside diameter for easy gripping while quick insertion or removal.



MODEL	dØ SUITABLE FOR BOLT	T THICKNESS	DØ OUTER DIA
CSCW-10	M10	9	40
CSCW-12	M12	9	48
CSCW-14	M14	11	63
CSCW-16	M16	11	63
CSCW-20	M20	11	80
CSCW-24	M24	11	100
CSCW-30	M30	14	100

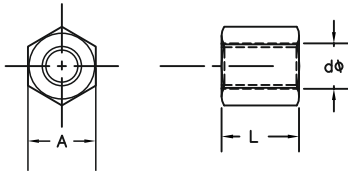




## EXTRA LONG NUT

Hardened and Tempered, Black Finish

These nuts have longer life as they have more number of threads than ordinary nuts.



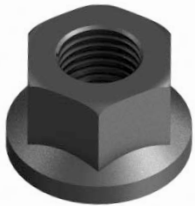
MODEL	d Ø THREAD SIZE	L TOTAL LENGTH	A Hex Size
CSELN-8	M8	12	13
CSELN-10	M10	15	17
CSELN-12	M12	18	19
CSELN-14	M14	21	24
CSELN-16	M16	24	24
CSELN-20	M20	30	30
CSELN-24	M24	36	36
CSELN-30	M30	45	45



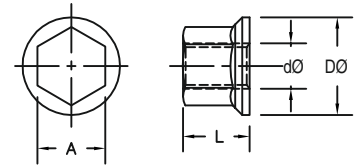
## FLANGED NUT

Forged, Hardened and Tempered, High Tensile Steel, Black Finish

These nuts have Flanged Face for larger face contact with the surface to be tightened on.



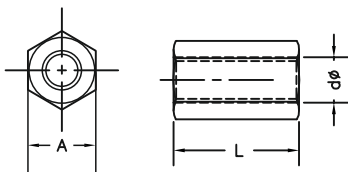
MODEL	d Ø THREAD SIZE	D Ø	A	L
CSFN-12	M12	25	19	18
CSFN-16	M16	32	24	24
CSFN-20	M20	40	30	30
CSFN-24	M24	47	36	36
CSFN-30	M30	60	45	40



## EXTENSION NUT

Hardened and Tempered, Black Finish

These nuts are used to couple the studs with studs or T-Bolts in order to increase their length.



MODEL	d Ø THREAD SIZE	L Total Length	A Hex Size
CSEN-8	M8	24	13
CSEN-10	M10	30	17
CSEN-12	M12	36	19
CSEN-14	M14	42	24
CSEN-16	M16	48	24
CSEN-20	M20	60	30
CSEN-24	M24	72	36
CSEN-30	M30	90	45

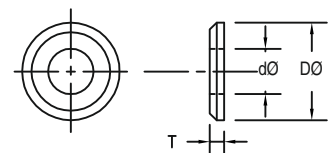


## PLAIN WASHER

Case Hardened, Black Finish



MODEL	d Ø SUITABLE FOR BOLT	T THICKNESS	D Ø OUTER DIA
CSPW-8	M8	4	23
CSPW-10	M10	4	28
CSPW-12	M12	5	35
CSPW-14	M14	6	40
CSPW-16	M16	7	45
CSPW-20	M20	7	48
CSPW-24	M24	9	60
CSPW-30	M30	11	70











## CLAMPING KIT - 58 PIECE (WITH STEP BLOCKS & STEPPED STRAP CLAMPS)

CLAMP SMITH Clamping kit - 58 Piece is available in an attractive powder coated metallic rack which can be hanged on machine or a wall or kept on a table. Each kit consists of all important clamping elements required to clamp a variety of work pieces. Following table shows the contents of each model of clamping kit suitable for different T-Slot sizes. All the items of clamping kit are taken from






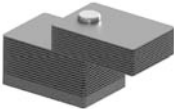


MODEL	CSCK-58-1412 T-SLOT SIZE 14 MM	CSCK-58-1612 T-SLOT SIZE 16 MM	CSCK-58-1812 T-SLOT SIZE 18 MM	CSCK-58-1816 T-SLOT SIZE 18 MM
<b>CONTENTS</b>				
 T-NUTS	CSTN-14-12- 6 Nos.	CSTN-16-12- 6 Nos.	CSTN-18-12- 6 Nos.	CSTN-18-16- 6 Nos.
 CLAMPING STUDS	CSCS-12-75- 4 Nos. CSCS-12-100- 4 Nos. CSCS-12-125- 4 Nos. CSCS-12-150- 4 Nos. CSCS-12-175- 4 Nos. CSCS-12-200- 4 Nos.	CSCS-12-75- 4 Nos. CSCS-12-100- 4 Nos. CSCS-12-125- 4 Nos. CSCS-12-150- 4 Nos. CSCS-12-175- 4 Nos. CSCS-12-200- 4 Nos.	CSCS-12-75- 4 Nos. CSCS-12-100- 4 Nos. CSCS-12-125- 4 Nos. CSCS-12-150- 4 Nos. CSCS-12-175- 4 Nos. CSCS-12-200- 4 Nos.	CSCS-16-75- 4 Nos. CSCS-16-100- 4 Nos. CSCS-16-125- 4 Nos. CSCS-16-150- 4 Nos. CSCS-16-175- 4 Nos. CSCS-16-200- 4 Nos.
 FLANGED NUTS	CSFN-12- 6 Nos.	CSFN-12- 6 Nos.	CSFN-12- 6 Nos.	CSFN-16- 6 Nos.
 EXTENSION NUTS	CSEN-12- 4 Nos.	CSEN-12- 4 Nos.	CSEN-12- 4 Nos.	CSEN-16- 4 Nos.
 STEPPED STRAP CLAMPS	CSSSC-12-65- 2 Nos. CSSSC-12-100- 2 Nos. CSSSC-12-150- 2 Nos.	CSSSC-12-65- 2 Nos. CSSSC-12-100- 2 Nos. CSSSC-12-150- 2 Nos.	CSSSC-12-65- 2 Nos. CSSSC-12-100- 2 Nos. CSSSC-12-150- 2 Nos.	CSSSC-16-75- 2 Nos. CSSSC-16-125- 2 Nos. CSSSC-16-160- 2 Nos.
 STEP BLOCKS	CSSB-1-2 PAIRS (4 Nos.) CSSB-2-2 PAIRS (4 Nos.) CSSB-3-2 PAIRS (4 Nos.)	CSSB-1-2 PAIRS (4 Nos.) CSSB-2-2 PAIRS (4 Nos.) CSSB-3-2 PAIRS (4 Nos.)	CSSB-1-2 PAIRS (4 Nos.) CSSB-2-2 PAIRS (4 Nos.) CSSB-3-2 PAIRS (4 Nos.)	CSSB-1-2 PAIRS (4 Nos.) CSSB-2-2 PAIRS (4 Nos.) CSSB-3-2 PAIRS (4Nos.)
TOTAL NO. OF PIECES	58 PIECES	58 PIECES	58 PIECES	58 PIECES

## CLAMPING KIT - 34 PIECE (WITH ADJUSTABLE SUPPORT PLATES & STRAP CLAMPS)

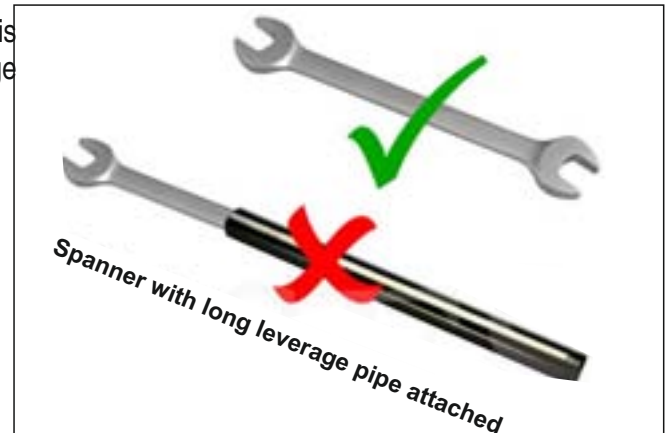
CLAMP SMITH Clamping kit - 34 Piece is economical clamping kit housed in an elegant wooden box. Following table shows the contents of each model of clamping kit suitable different T-Slot sizes. All Items of clamping kit are taken from our range of products given in this catalogue.



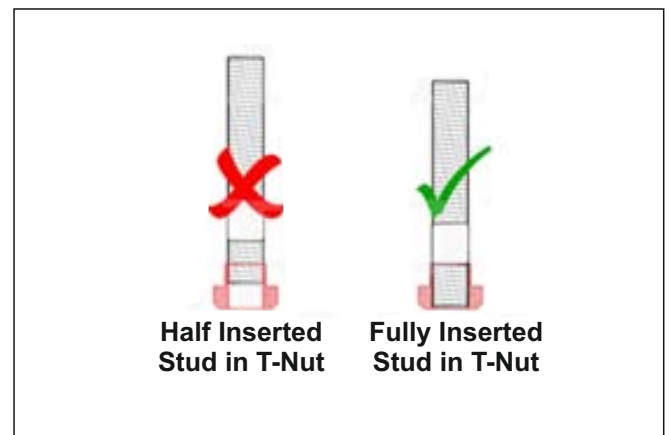
	MODEL	CSCK-34-1412 T-SLOT SIZE 14 MM	CSCK-34-1612 T-SLOT SIZE 16 MM	CSCK-34-1812 T-SLOT SIZE 18 MM
	CONTENTS			
	T-NUTS	CSTN-14-12- 4 Nos.	CSTN-16-12- 4 Nos.	CSTN-18-12- 4 Nos.
	CLAMPING STUDS	CSCS-12-75- 4 Nos. CSCS-12-100- 4 Nos. CSCS-12-150- 4 Nos. CSCS-12-200- 4 Nos.	CSCS-12-75- 4 Nos. CSCS-12-100- 4 Nos. CSCS-12-150- 4 Nos. CSCS-12-200- 4 Nos.	CSCS-12-75- 4 Nos. CSCS-12-100- 4 Nos. CSCS-12-150- 4 Nos. CSCS-12-200- 4 Nos.
	FLANGED NUTS	CSFN-12- 4 Nos.	CSFN-12- 4 Nos.	CSFN-12- 4 Nos.
	EXTENSION NUTS	CSEN-12- 2 Nos.	CSEN-12- 2 Nos.	CSEN-12- 2 Nos.
	STRAP CLAMPS	CSSC-12-100- 2 Nos. CSSC-12-125- 2 Nos.	CSSC-12-100- 2 Nos. CSSC-12-125- 2 Nos.	CSSC-12-100- 2 Nos. CSSC-12-125- 2 Nos.
	ADJUSTABLE SUPPORT PLATES	CSASP-250- 2 Nos. CSASP-2100- 2 Nos.	CSASP-250- 2 Nos. CSASP-2100- 2 Nos.	CSASP-250- 2 Nos. CSASP-2100- 2 Nos.
	TOTAL NO. OF PIECES	34 PIECES	34 PIECES	34 PIECES

## USEFUL SUGGESTIONS

Studs are overstressed, twisted and broken when higher torque is applied by using additional pipe-leverage to the spanner. Avoid usage of pipe-leverage.



Insert Stud fully into the T-Nut to avoid cracking of T-Nuts.



How to increase the life of T-Bolts, Clamping Studs, Nuts & Washers?

- Lubrication aids Clamping by reducing the frictional co-efficient and thereby enhancing life of the threads.
- Use recommended sizes as per DIN / IS standards for the particular T-Slot size.
- DO NOT tamper products on the bench grinder!
- Do not use torque more than the recommended values to tighten the nuts.
- Over tightening can cause permanent damage to the soft T-Slotted Bed.



# CLAMPING APPLICATIONS

