

The Complete
BUILDING CARE
Since 1976



Waterproofing Sealing Bonding Grouting
Protecting Adhesive Insulating
Strengthening Plastering
Putty Flooring Coating Admixture



 **CONTECH[®]**
CHEMICALS
Chemists to the Building Industry





The saga of success and growth...

Contech Chemicals, an ISO 9001:2008 certified company, is an outstanding entity in the field of manufacturers of high quality construction chemicals. With a very strong metamorphosis and customer oriented attitude, the company has grown manifolds and has become synonymous with quality and trust today.

A farsighted man Shri Harshad Vohra laid the foundation stone of the company in 1976 with a vision to become a market leader. He has always developed products with his own R&D and vision. Today his sons and the directors of the company, Mr. Premal Vohra and Mr. Hetal Vohra are following his values.

Contech Chemicals has been constantly updating itself on the technological advancements in the industry. It lays great prominence on R&D and has been a forerunner in developing innovative and technologically advanced products for the market, focusing the requirement of the customer and improving the quality of the products. The Contech products are developed and practically tested as per IS and BS standards for handling the most severe conditions.

Besides manufacturing construction chemicals, Contech Chemicals' contract department also undertakes different types of waterproofing and maintenance projects.



Waterproofing Compound

HYDROSHIELD® : Cement Admixture

It is a cement admixture mixed in the plastering mortar for providing Plaster / IPS-PCC, Fillets in the structures to make them waterproof and also increases the strength of the mortar. Hydroshield mixed mortar withstands high water pressure as well as have high adhesive power to concrete & masonry surfaces. Hydroshield confirms to IS 2645-1975 standard.

Application Areas

Hydroshield is used for waterproofing water retaining structures such as Water tanks, Effluent treatment plant, Toilet sunk, Basement Retaining wall, Garden terrace, Grouting of the Pipe hole etc.

RUFLOAT : Polymer Coating

Rufloat is a polymer based cementitious flexible waterproofing coating system to make the wall and terrace waterproof. Rufloat coating is Light weight, UV resistance, and has got high adhesive power to all types of surfaces. Rufloat can be applied even on a wet surface.

Application Areas

Rufloat can be applied on roof having Tiled / PCC finish, Flat or Slopping, Exterior walls, Water tank, Toilet sunk, Basement etc.

RUFLOAT FLEXI : Waterproof and Anti-Carbonation Coating

Rufloat Flexi is a ready to use single component Acrylic based polymer waterproof coating applied either by brush / spray / roller having significant resistant to cracking, chalking, and peeling properties. Rufloat Flexi is Non toxic, Breathable and Environment friendly product.

Application Areas

Used for waterproofing the roof having china mosaic / PCC / tiled / bitumen treated surface, Exterior wall, GI / AC sheet roof & all other exposed concrete surfaces. As an anti-carbonation coating, it is used in car park deck, underpasses, concrete bridge deck and all other concrete structures which are exposed to carbon dioxide gas and water.

RUFFERSEAL : Bituminous Waterproof Coating

Rufferseal is a bituminous based waterproofing compound available in two grades Liquid & Paste form.

Application Areas

It is used for stopping the water leakage from RCC, AC / GI Sheet Roof and 'J' bolt.

CONHYSEAL : Cement Admixture

Conhyseal is a chloride free integral waterproofing liquid admixture for cement. Conhyseal is an organic liquid which reacts with the cement to produce a hydrophobic material which repels external water & reduces the absorption of water into the concrete.

Application Areas

Used for waterproofing the Concrete roof, Water retaining structures, Exterior Walls, Toilet sunk, etc

DAMPSEAL : Silicon Coating

It is a transparent Silane Siloxane based water / oil repellent coating for exterior walls. It allows the masonry to breathe. Dampseal is supplied in water / solvent based grades. Dampseal Treated surface does not become dark / yellowish. Dampseal prevents the growth of fungus, algae etc.

Application Areas

It is used on Exposed Bricks / RCC fascia, Stone fascia & Heritage lime-finished structure to make them water / oil repellent.

CRAXEAL : PU Sealant

Craxéal is a one-component, high-modulus polyurethane sealant that cures on exposure to atmospheric humidity.

Application Areas

It is used to seal the cracks and construction / expansion joints. It has excellent adhesion to sheet iron, aluminum, stainless steel, lead, copper, ceramic, glass, wood and various plastic materials.

CONCOOL : Heat Insulation Coating

It is a single component ready to use heat Insulation coating to be applied on exterior surfaces like RCC roof, GI / AC Sheet Roof, exterior wall etc. Concool helps to reduce the inside temperature by 10-15%. It has got UV resistant / Flexible properties.



RUFFERSEAL-MB : PU Based Bituminous Coating

RUFFERSEAL-MB is a single component cold applied PU based polymer modified elastomeric bituminous waterproof and protective seamless coating. It has got good crack bridging property under extreme temperature condition and prevents the growth of fungus, algae etc.

Application Areas

RUFFERSEAL-MB is used to waterproof the COP areas, RCC structures, Slopping terrace, Basement slab / Retaining wall, Garden terrace, Podium slab, etc.

KWICKROCK : Fast Setting Cement

KWICK ROCK is a fast setting ready to use cementitious compound in powder form.

Application Areas

It is used to stop streams of running water or seepage through wall and floor immediately, as well as for concrete repairs with Conweld.

PAINT STICK : Stops Paint Peeling

It is observed that when Paint is applied on a newly plastered surface, it peels off in a very short time. Paint fails due to sanding properties of plaster as well as alkalinity of cement & efflorescence. Paint Stick chemicals react with Alkali and make the surface hard and impermeable.

Application Areas

It can be applied on Plastered / exposed brick - RCC wall.

CONCRIZAL : Crystalline Waterproof Coating

Concrizal is deep penetrating water based waterproof coating in liquid form for the cement based concrete surfaces that keeps the natural appearance of surface as it is. It forms crystals within the pores of the substrate. This crystal fills the pores in the concrete surface, making it denser, abrasion resistant and waterproof.

Application Areas

Concrizal can be applied on concrete surface, basements walls, roofs, paver blocks, etc.

Concrete Admixtures

HYDROCEM : Micro Silica

Hydrocem is a highly reactive Metakaolin mineral additive in powder form to make durable concrete with higher compressive strength and low permeability.

Application Areas

Hydrocem is used in preparing High Performance, High Strength and Lightweight concrete in Industrial / Commercial floor, Marine concrete, Precast Concrete, Shotcreting, Ferro cement products, Glass Fiber Reinforced Concrete, Mortars, stuccos, Repair Material, Pool Plasters etc.

CONFLOW-S/CONFLOW-SR : Superplasticizer

It is a Sulphonated Naphthalene Formaldehyde based Super Plasticizer for cement, which reduces the requirement of water upto 30% without affecting the setting time in concrete mix. It makes the concrete dense, flowable, pumpable less honeycomb and increases its strength up to 25%. It is available in two grades Conflow-S water retention and Conflow-SR slump retention. It is chloride and nitrate free.

Application Areas

It is useful in heavily reinforced concrete & water retaining structures. It is chloride and nitrate free.

CONFLOW-CP : Polycarboxylate Ether based Super Plasticizer

It is a new generation admixture based on Polycarboxylic ether. Conflow-CP is, having higher retarding and water reducing properties without affecting the setting time in concrete mix. It makes the concrete dense, flowable, pumpable less honeycomb and increases its strength up to 25%. It is chloride and nitrate free. It is available in two grades Conflow-CPW water retention and Conflow-CPS slump retention.

Application Areas

Used in heavy reinforced concrete & water retaining structures as well as in precast, pre stressed concrete, concrete containing pozzolonas such as microsilica, GGBFS, and high volume fly ash concrete.



CONFLOW : Plasticizer

It is a lignin based plasticizer cum waterproofer used for concrete, which reduces the requirement of water in concrete mix, thus makes the concrete dense, flowable and increases its strength upto 20%. Conflow can save cement upto 15% at the less water cement ratio, providing required workability and strength.

Application Areas

Used in paver block, underground concrete, lean structural concrete etc.

CONFLOW-SMF : Super Plasticizer

Conflow-SMF is Sulphonated Melamine Formaldehyde based high early strength super plasticizer used for producing high early and ultimate strength concrete. Conflow-SMF gives the concrete high workability without segregation and bleeding.

Application Areas

Precast - Pre-stressed concrete panel / structures, Paver block etc.

KRETE-X : Fast Setting Admixture

It is an accelerating Liquid admixture for cement. It is also used as an integral concrete floor hardener as well as for early form removal and in foundation concreting.

Application Areas

Krete-X is used for repairing potholes in concrete floors. Krete-X produces a tough non-shrink waterproof concrete with high early & ultimate compressive strength.

CONFAST : Fast Setting Admixture

Confast is a chloride free water reducing and strength gaining admixture for cement.

Application Areas

Used for the production of Precast members, semi dry and wet machine produce products as well as for Precast beams with post tension system.

CONFIBER : Polypropylene Concrete Fiber

Confiber is a polypropylene based fiber specifically designed for the reinforcement of cementitious mortars and concrete mixes. It is easily incorporated in the concrete mix and available in Fibrillated and Mono Filament Grades.

Application Areas

Confiber is used in plastering mortar, crack filling mortar, concrete floor screed, rendering mortar, casting RCC slab, column, beam, etc.

CONFIBER-AR : Glass Fiber

Confiber-AR is a Glass Fiber specifically designed for the reinforcement of cementitious mortars and concrete mixes. These fibers, which are made of Alkali Resistant glass are resistant to acids and other chemicals and can be easily incorporated in the concrete mix. It prevents plastic shrinkage cracks in concrete / plaster.

Application Areas

Confiber-AR is used in providing plastering mortar, crack filling mortar, concrete floor screeds, rendering mortar, etc.

Concrete Repair / Bonding Adhesive

CONBOND : Concrete Bonding Adhesive

Conbond is a single component polymer based concrete adhesive used for repairing eroded concrete structures. Its application on old surfaces like RCC, Brick, Ceramic Tile, etc provides new concrete or rendering a dependable 100% monolithic bond. Conbond is an effective adhesive on non-porous surfaces like stone, wood, concrete, ceramic tiles, etc.

Application Areas

1. Repairing and strengthening eroded RCC Structures like Slab, Beam, Column, etc.
2. Jacketing and Grouting masonry or RCC Structures.
3. Repairing cracked masonry and joint between Brick masonry and RCC Members.

CONBOND-SBR LATEX

Conbond-SBR Latex is a styrene butadiene rubber based admixture designed as an integral adhesive for cement, mortars and concrete to improve bond strength, as well as chemical and water resistance.

Application Areas

Conbond-SBR Latex is used for repairing all types of structural repairs.



BLOCKSEAL : AAC / CLC Block Adhesive

Blockseal is a ready to use polymer modified cement mortar-bonding adhesive in powder form. It can be used even to a thickness of 3mm for laying AAC Blocks. Blockseal provides a strong and durable bond between two Blocks.

Application Areas

BLOCKSEAL is used for fixing, laying and jointing AAC Blocks, Cement Blocks, Concrete Blocks, Hollow Blocks, Lightweight Cellular Blocks, Fly Ash Bricks etc.

CONPOLYCEM : Micro Concrete

Conpolycem is a ready to use one component cementitious, fiber reinforced; polymer modified high strength free flow repair mortar used for structural concrete repairs vertical or horizontal application as well as general patching to concrete and mortars.

Application Areas

Renovation of eroded concrete like beams, slabs, columns and honey combed structures. Jacketing of RCC columns, poured / cast applications to a thickness of 40mm to 100mm, etc.

CONSEAL : Epoxy Bonding Adhesive

It is a two component medium viscous Epoxy-based Concrete Adhesive supplied in Resin, Hardener and special filler.

Application Areas

Used for bonding new concrete to old set concrete. Used for repairing the RCC members using carbon fiber, grouting the RCC Bars / Machine foundation bolts where surrounded spaces are very less.

TILEFIX : Tile Fixing Adhesive

A polymer-based ready to use tile adhesive in powder form available in gray and white colour. Tilefix meets the standard of BS:5980:1980. It has got high gripping, non-shrink and flexible properties, which absorbs normal floor/thermal movements. Tilefix has got long adjustability time and water resistant properties.

Application Areas

Tilefix is used for fixing Marble, Glass Mosaic, Vitrified Tiles, Granite, Ceramic tiles to any kind of surfaces horizontal or vertical. Tilefix is suitable for Bathroom, Kitchen, Swimming Pool, Floors for Interior as well as Exterior areas.

TILEBOND : Tile Bonding Additive

It is a polymer based special liquid additive for Tilefix tile adhesive as well as for cement mortar to increase their adhesive power with the substrate.

Application Areas

Used for fixing large size heavy stone / marble / granite / vitrified tile etc to the wall for interior or exterior side of building.

TILOGROUT : Tile Joint Filler

Tilogrout is a polymer based cementitious tile-joint filler. It has got excellent adhesion, water resistant, frost resistant properties.

Application Areas

Grouting the joints between tile / stone. Available in Grey, Ivory, Black, Green & White shades.

RUFLOAT PRIMER : Adhesion Promoter for All Types of Coatings

Rufcoat primer is a polymer based liquid having higher adhesion power to all types of substrates like china mosaic, bitumen coated surface, Concrete / Metal etc. It allows surface to breathe as well as gives higher bonding strength to top paint coat.

CONSTRIP : Self-Adhesive Tape

It is Butyl / Bitumen based self adhesive flexible tape offering cost effective and long lasting solution of waterproofing and heat insulation problems prevalent in construction industries. It can be applied on the overlaps of AC / GI / Precoated / fiber / polycarbonate sheets. Available in 10 mtr. length roll of 50, 75, 100 and 150 mm width size.

FIBERNET : Reinforcing Net

It is an Alkali Resistant Fiber Glass Mesh—with unique properties, enabling it to be used in a wide range of applications. A high quality synthetic coating on the glass yarn protects mesh against alkaline influences from the adhesives and other materials that are used.

Application Areas

It is widely used to reinforce cement mortar, stone, wall materials, gypsum, plastic, bitumen, plaster, marble, mosaics, roofing, interior and exterior walls, wall and roof waterproofing.



Flooring Products

FERRICON : Metallic / Non Metallic / Quartz Based Floor Hardener

FERRICON is used in providing concrete floors, which has to carry heavy loads and traffic. Ferricon has got Wear Resistant, Spark Resistant, Non Dusting, Easy to clean, Non-Slip, Oil proof Properties It Extends serviceable life of the concrete floor. Ferricon is having hardness more than 8 to 9 MOH. It is available in Metallic, Non Metallic (Carborundum / Quartz based) grades.

Application Areas

Industrial Floor, Run-Way, Ware House, Railway Platform, Repair Workshop, Jetty, Dock & Quay, Foundry Floor, Hanger, Duct & Silo, Concrete Road, Causeway, etc.

FLORSEAL-LI : Liquid Floor Hardener and Dust Proofer

It is a transparent liquid chemical hardener and dust-proofer for concrete floors, which makes the surface impermeable and corrosion resistant. Florseal-LI Hardens & dustproof-surfaces, resists acids alkalis, oils & salts. Florseal-LI is easy to apply with brush to all types of surfaces. The treated surfaces are effective against Caustic Soda, Calcium Chloride, Ammonium, Chloride, Solvent, Fuel Oil and Soap Solution.

Application Areas

Florseal-LI could be used for treating the floor surface of factories, workshops, platforms drive waves etc. It can also be use for concrete surface exposed to salt water or salt laden air, Florseal-LI can be use in marine environment to retard barnacles and other marine growth.

CONMAST : Mastic

Conmast is a thermo plastic compound of selected fillers and blown grade Bitumen in powder form. When it is heated at about 200 - 300° C, the entire mass transforms into a sticky paste that could be troweled easily on the surface. The treated surface is resistant to most dilute inorganic acid.

Application Areas

Used for providing flooring on bridge decks, floating barge, ware house, concrete road joints filling. It can be laid on wooden and concrete surface.

Floor Repair

ARTROCK : Floor Patching Compound

It is a mineral based floor-patching compound having high strength. The repaired surface could be put in to use on the next day and does not need any curing. The treated area sets hard in few hours, does not need curing and gives strength higher than concrete. Artrock can be used to a thickness of 15mm. Artrock adheres to any surface and give abrasion resistant properties also.

Application Areas

Used for repairing the potholes / broken stone joints of industrial floors.

CONWELD : Concrete Floor Topping Compound

Conweld is a latex based cement admixture polymer that allows freshly laid concrete to bond with old surfaces like concrete, masonry, wood etc even to a minimum thickness of 10 mm. It has got high impact strength. It requires very less curing. When it is used along with our Kwick Rock Powder it gives very high early strength.

Application Areas

Conweld is used for providing feather edge concrete topping to a thickness of 15-19 mm on an eroded concrete surfaces also used in Exposed RCC touching work. The combination of Conweld with Kwick Rock powder can be used for repairing railway platforms, bridges, concrete roads where very high early strength is required.

EPIWELD - HF

It is an epoxy based floor / wall coating. It has high abrasion resistance properties as well as resists the growth of bacterial and fungus.

Application Areas

It used in Pharmaceuticals, Hospital, Food Industry etc. having medium duty traffic.



Non Shrink Free Flow Grout

FERROX GROUT : Non Shrink Cementitious Grout

Ferrox Grout is a Free flow, high strength, non-shrink, cementitious precision grout having strength of 75 Mpa which imparts controlled expansion in the plastic states whilst minimizing the water demand. It develops high early compressive and flexural strength.

Application Areas

Ferrox Grout is used for Grouting the Base Plates and Bolt Pockets of

- Cement, Textile, Granite & Paper Plant Machinery
- Diesel Generators & Crane
- Machine Foundation & Building Works
- Heavy Steel Structure Foundation
- Compressors, Pump Sets
- Turbo generators etc

CONSEAL-GR : Non Shrink Epoxy Grout

It is a two component low viscous pourable grade Epoxy compound supplied in two components Resin & Hardener.

Application Areas

It is used for pressure injection grouting in the defective structural RCC members for strengthening the structures.

Rust Converter / Remover

RUSTRIP : Rust Converter

Rustrip is a Rust Converter when applied on the rusted iron surface, it converts rust into a grayish black anti-corrosive primer, ready for final painting. It does not require any neutralization of residual chemicals like rust removers which are acidic in nature and may cause corrosion. It is compatible with all types of coating like Epoxy, Polyurethane, Synthetic, Oil, Bituminous, Rubber etc.

Application Areas

Rustrip is recommended for use on all types of rusted iron, steel surface, reinforcement bars, steel structure in chemical plant and marine area as well as in commercial building.

RUSTCLEEN : Rust Remover

Rustclean is formulated specially to remove thickest layers of rust very quickly & efficiently. Rustclean is very useful & effective for removing rust from small parts, components as well as large parts which cannot be dipped.

RUSTCURE : Rust Inhibitor

Rustcure is a single component polymer based anti-corrosive paint specially prepared for steel bars used in the construction industry. The film obtained from Rustcure is tough, flexible and have high tensile as well as flexural properties. It bonds tightly with steel surface and never peels off.

Rustcure is supplied in liquid form and is mixed with cement at site in the required proportion. The prepared paint is applied with a brush on the reinforcement bars.

Surface Treatment

SEAL & SHINE : Transparent Waterproof Coating

SEAL & SHINE is a UV resistant, transparent flexible polymer coating. It does not change the original appearance but it makes the surface waterproof and gives glossy wet look. It is manufactured by employing state-of-the-art emulsion polymerization technology ensuring product consistency.

Application Areas

It can be applied on Stone, Paver Block, Concrete, Marble, Granite, China mosaic roof etc.

CONCURE : Curing Compound

It is a brush or spray applied wax based membrane-curing compound, which eliminates subsequent watering of concrete or plastered surfaces.

Application Areas

Concure is used on bridges, dams, canal linings reservoirs, concrete floor / roads, airfield, retaining walls, pre-stressed / precast concrete components, structural patchwork repairs etc.



EPITAR-C : Coal-Tar Epoxy

Epitar-C is a two-pack Coal-tar epoxy paint, having high anti corrosive property against mild acids, alkalis and salty water.

Application Areas

It is used for coating ship hulls, coating steel pipeline, offshore structures, salt-water tank, effluent treatment & sewage plants, etc.

EASY MOULD : Demoulding Agent

Easy mould is a specially formulated Liquid that could be diluted with water. The Liquid chemical reacts with alkali contained in cement that forms a water repellent film not allowing the concrete to stick to the form work giving a smooth exposed concrete without any honey combing or pinholes.

Application Areas

Easy Mould is used on all types of form works steel, wood, plastic, fiberglass etc in casting RCC as well as mfg. Precast / Pre-stressed concrete.

EPICOAT : Epoxy based Anti-corrosive Paint

EPICOAT is an Epoxy based anti-corrosive coating designed for those surfaces, which requires protection against corrosion. EPICOAT is resistant to water, mild acid, alkali, solvent, detergent, petrol, insecticides, salt, acidic fume etc.

Application Areas

EPICOAT is recommended for treating all types of surfaces e.g. iron, steel, concrete, wood etc, and is ideal for tank, pipes, structural steel work, and concrete structures etc.

Heat Insulation

CONCOOL

Concool is a single component Polymer based elastomeric thermal insulation flexible coating for the roof and wall. Concool reduces the inside/indoor temperature because of its inert insulation ingredient and its white colour.

Application Areas

Concool is used on Industrial, Commercial and Residential Buildings having RCC / Metal Roof as well as exterior wall.

Wall Putty

CONTECH PLATINUM WALL PUTTY

Contech Platinum Wall Putty is a white cement based putty for exterior and interior walls, prepared with polymers and additives. It gives smoother and stronger adhesion to the concrete / freshly plastered wall, which also minimizes paint cost and extends its durability.

Expansion Joint Board

CONMOULD

It is a bituminous based Jolly board expansion joint filler board available in 12 mm, 18 mm, 25 mm thickness.

Ready Made Plaster

CONPLAST MIX 500

Conplast Mix 500 is a Ready Mix Cement Based Fiber Reinforced Plaster mortar having fine sand of maximum size of 1.5 mm and other special chemical admixtures which gives the extra bonding power as well as crack resistance properties. It has got high adhesion properties to Concrete, Bricks, AAC / CLC block etc.

Application Areas

Exterior and Interior walls.

Anti Carbonation Coating

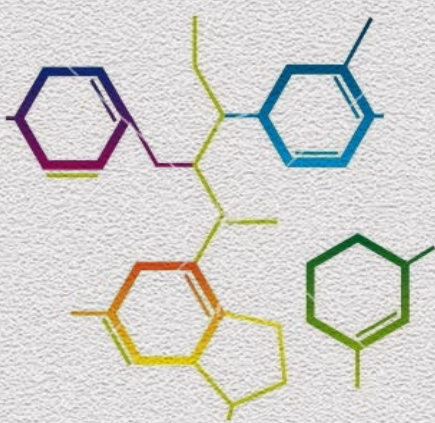
RUFLOAT FLEXI : Anti-carbonation and Waterproof Coating

Rufcoat Flexi is a ready to use single component Acrylic based polymer waterproof / ant carbonation coating for roof, wall and other concrete surfaces. Rufcoat Flexi protects the surface from the ingress of water and stops the passage of water vapour. It is an effective barrier against carbon dioxide gas / air borne chlorides for corrosion of steel and spalling of concrete.

Application Areas

Used as an anti-carbonation coating for car park decks, on underpasses, concrete bridge decks and all other concrete structures which are exposed to carbon dioxide gas and water.

PURPOSE		PRODUCTS SUGGESTED
A	WATERPROOFING	
1	Providing Waterproof Plaster / I.P.S. / PCC / Fillets in Toilets/Water Tanks/ Basement/Water retaining Structures	HYDROSHIELD®, RUFCOAT®, CONHYSEAL CONBOND-SBR LATEX, CONPLAST MIX-500
2	Waterproofing Coating on Leaky Tiled / IPS Roof / Retaining Wall / China Mosaic Roof / PCC / Exterior Wall Surface / Water Tank	RUFCOAT®, RUFCOAT-FLEXI, CONBOND-SBR LATEX RUFFERSEAL-MB
3	Instant Stop leakages	KWICKROCK
4	Water / Oil Repellent Silane - Siloxane Based Silicon Coating for Structures like Exposed RCC, Brick masonry, Stone Facing, lime finished old heritage Structures	DAMPSEAL / DAMPSEAL-S / DAMPSEAL-OS
5	A.C. Sheet / G.I. Sheet / Cement Gutter Waterproofing	CONSTRIIP, RUFFERSEAL LIQUID, RUFFERSEAL PLASTIC
6	C.I. Pipe Joints Grouting	HYDROSHIELD®
7	Cracks in RCC Slab / Plaster / Brick Masonry	CONBOND, CONXPAN, CONFIBER, CONBOND-SBR LATEX, CRAXEAL, CONSEAL
8	Efflorescence	PAINT STICK
9	Heat Insulation / Anti Carbonation Coating	CONCOOL, RUFCOAT FLEXI
10	Waterproofing Concrete Admixture	CONHYSEAL
11	Liquid Crystalline Waterproof Coating	CONCRIZAL
B	FLOORING	
1	Providing new heavy duty Industrial Concrete floor (Mineral-based floor hardener)	FERRICON, FERRICON-NM, FERRICON QTZ, CONFIBER
2	Industrial floor repairs	ARTROCK, KRETE-X
3	Floor levelling / repairing 5 - 15 mm thick	CONWELD, CONFIBER
4	Integral Floor hardener - liquid-based	KRETE-X
5	Floor Coating - Epoxy-Based Paint	EPICOAT
6	Dust Proof Surface Floor Hardener – Liquid	FLORSEAL- LI
7	Acid-Proof Pointing / Flooring / Mastic	EPIWELD-AR / CONMAST
C	GROUTING	
1	RCC Bar Grouting	CONSEAL
2	Machine Foundation / Concrete - Bolt Grouting	FERROX GROUT / CONSEAL
D	CONCRETE ADHESIVE / REPAIR MORTAR	
1	Polymer Base Concrete Adhesive for Bonding new concrete to old, Repairing eroded concrete structure	CONBOND®, CONSEAL, CONBOND-SBR LATEX, CONFIBER
2	Tile-fixing Adhesive for Marble, Granite, Vitrified / Glass Mosaic / Ceramic	TILEFIX, TILEBOND
3	AAC-CLC Block Jointing Mortar / Adhesive	BLOCKSEAL
4	Polymer Modified Cementitious Mortar / Micro Concrete	CONPOLYCEM
E	CONCRETE ADMIXTURE	
1	Super / Plasticizer-Water reducing	CONFLOW, CONFLOW-S, CONFLOW-CP
2	Accelerating agent & early Form removal	KRETE-X, CONFLOW-SMF, CONFAST
3	Micro silica base Pozzolonic Additive	HYDROCEM
4	Waterproofing Admixture	CONFLOW, CONHYSEAL
5	Super Plasticizer	CONFLOW-S, CONFLOW-CP, CONFLOW-SMF
6	Concrete Fiber Glass / PP Based	CONFIBER, CONFIBER-AR GLASS
7	Precast Concrete Admixture	CONFLOW-SMF, CONFLOW-CP
F	MISCELLANEOUS	
1	Curing Compound	CONCURE
2	Heat Insulation/ Waterproofing Coating	CONCOOL
3	De-shuttering Oil	EASY MOULD
4	Premoulded Expansion Joint Filler Board - Tar Based	CONMOULD
5	Rust Removing from Steel Structures & RCC Bars	RUSTRIIP, RUSTCLEEN
6	Rust Preventer for RCC Bars	RUSTCURE
7	Exposed Rendering of RCC / Brick Masonry	CONWELD, CONBOND
8	Expansion / Construction / Window joint Sealing	CRAXEAL
G	ANTI CARBONATION COATING	
1	Waterproofing / Anti Carbonation Coating	RUFCOAT FLEXI
H	WALL PUTTY	
1	Cement Base Wall Putty	CONTECH PLATUUM WALL PUTTY
I	READY MADE PLASTER	
1	Exterior / Interior Wall Plaster	CONPLAST MIX - 500
2	Polymer Modified High Strength Mortar / Micro Concrete	CONPOLYCEM



Services Rendered by **CONTECH CHEMICALS**

We are specialists in the field of pre-construction and post-construction waterproofing treatment applied on Terrace Slab, Basement, Water Tank, Swimming Pool, Garden Terrace, Toilet Sunk, Slopping Slab, Corrugated Roof, ETP Plant, and Humidification Plant, etc. for the last 30 years with different methods as mentioned below:

- Rufcoat / Concool Polymer based waterproofing cum heat insulation coating
- Brickbat Coba cement based waterproofing treatment on terrace
- Garden Terrace waterproofing
- Injection Grouting with cement, epoxy and polymers
- Polymemberane Type waterproofing treatment
- Crystalline Waterproofing
- Five / Seven layer Tarfelt waterproofing treatment
- Expansion Joint filling with Polysulphide sealant
- Cracks / joints sealing with Silicon sealant
- Box type-waterproofing treatment for basement
- China mosaic treatment
- Silicon water repellent coating on exposed RCC / Brick & Heritage Structures
- Epoxy Coating on Pharmaceutical / Factory floor
- Non-toxic PU / Epoxy coating in Potable Water Tank
- Anti-carbonation coating

We have fully trained and experienced staff, who can identify your problem and suggest the right solutions and product for the same.

Photographs shown in this catalogue are for illustration only to understand the product use/purpose.