

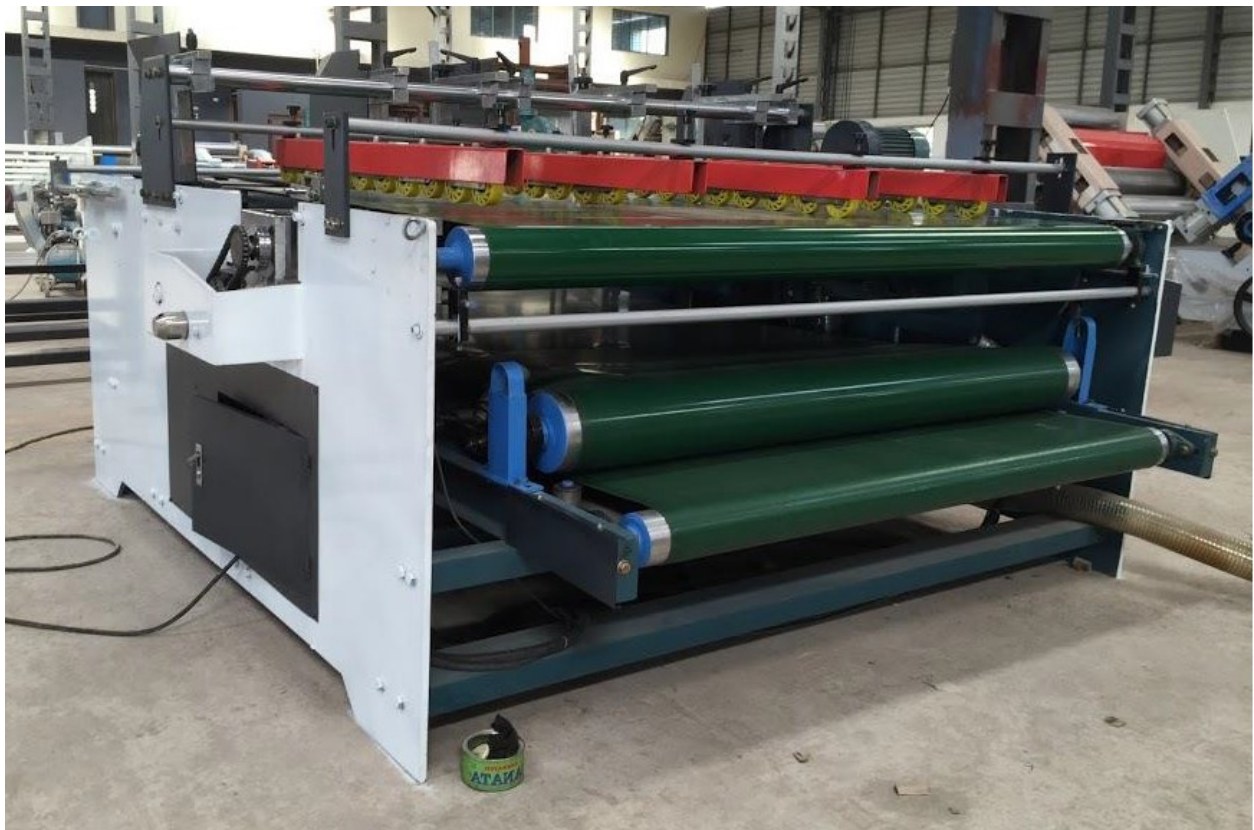


Manufacturers of Automatic Carton Folder and Gluer, Cache Cover and Allied machineries

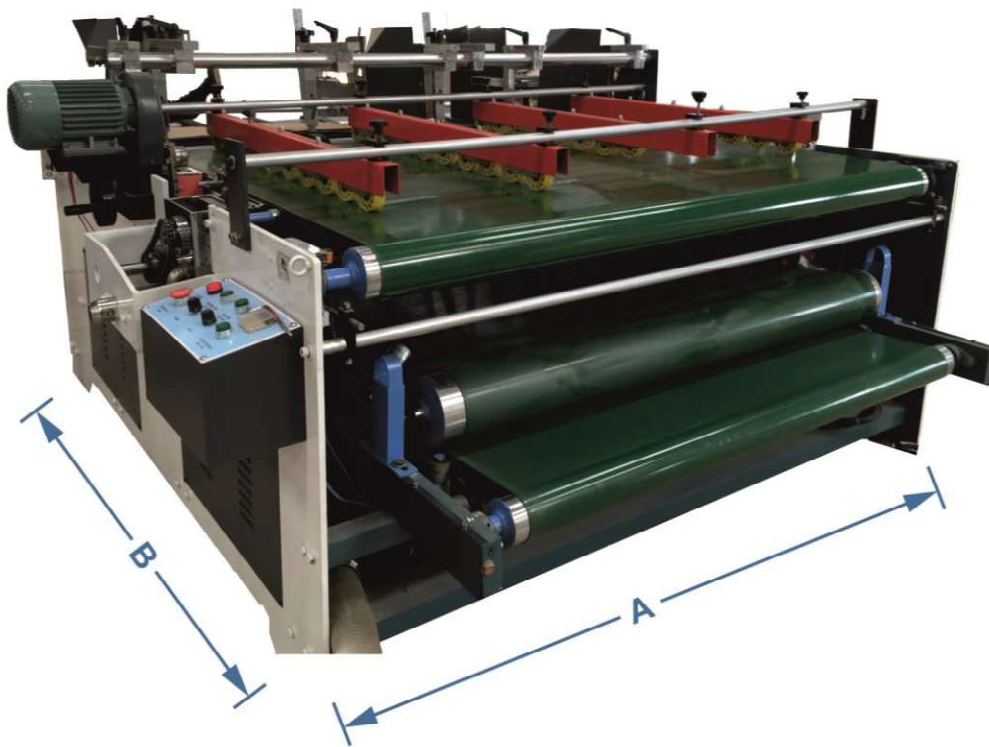
BT-SEMI-AUTOMATIC FOLDER GLUER

AUTO FEED MACHINE

BT-SEMI-AUTOMATIC FOLDER GLUER – AUTO FEED IS USED FOR		
1	2	3
AUTO FEED	DUAL TANK FOR GLUING	MINIMUM WASTAGE

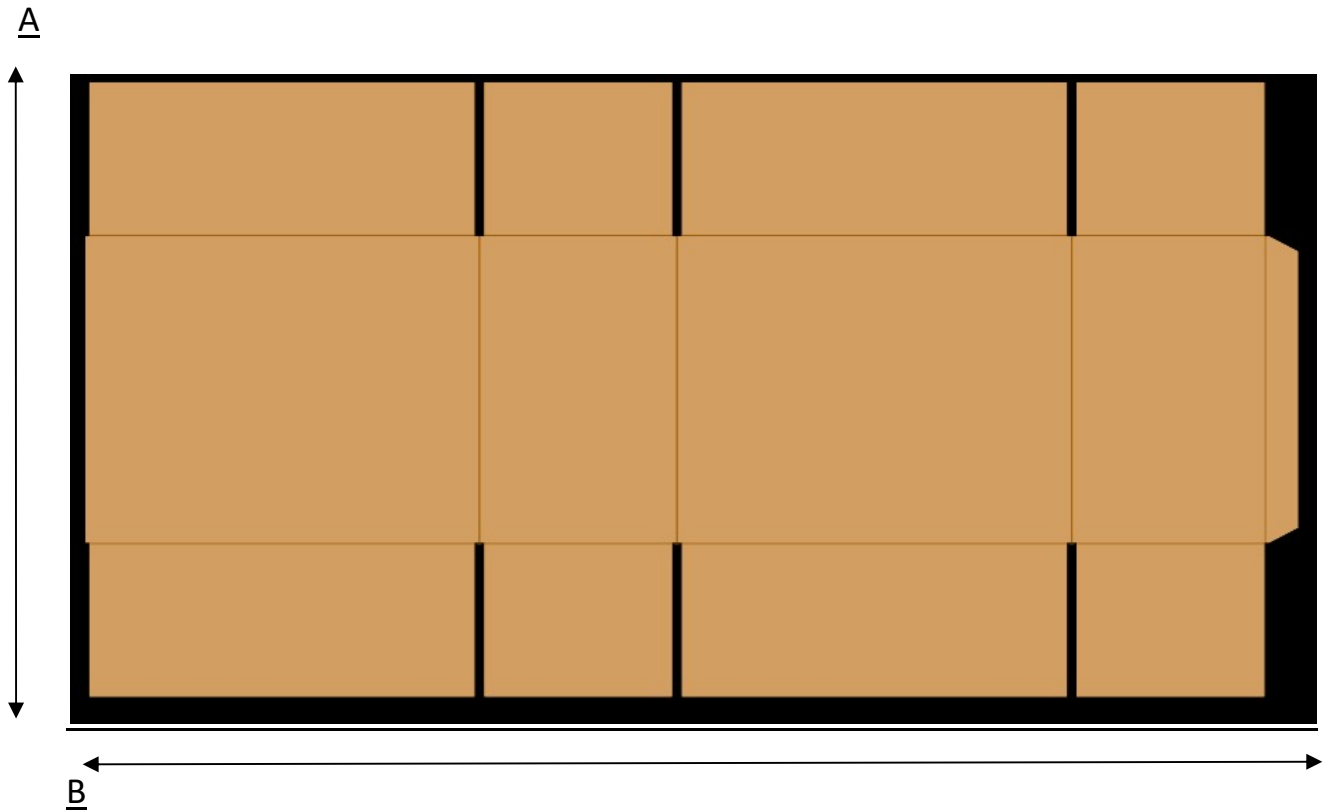


Machine Layout:



Size	A	B	Height
1500 x 1100	2200mm	1900 mm	1350mm
1800 x 1100	2400mm	1900mm	1350mm
2000 x 1100	2600mm	1900mm	1350mm
2200 x 1100	2800mm	2000mm	1350mm

General Dimensions of the Boxes:



Size In mm	Minimum size		Maximum Size	
	A	B	A	B
1500 x 1000	260	200	1100	1500
1800 x 1000	260	200	1100	1800
2000 x 1000	260	200	1100	2000
2200 x 1000	260	200	1100	2200

Technical Specifications:

BT-2M Semi –Automatic Folder Gluer		
General Dimensions		Technical Features
Machine size	1500 1800 2000 2200 mm	<ul style="list-style-type: none">• Automatic feed System allows to feed the sheet at designed standard speed automatically• Manual Pressure Zone allows you to properly Process the sheet• Double Gluing tank for multiple productivity for the carton/boxes• Manual carton folding is adjustable pressing zone and end support table for stacking
Design Speed	60MPM	
Machine Speed	50MPM	
Feeding Type	Auto feeding	
Pressure Type	Manual Pressure	
Glue Type	Standard Glue	
Power requirement	3.8KW	
Glue Tank	Stainless Steel Glue Tank	

Contact Us:

Boxtech Bangalore

C-101/1, 3rd cross, 3rd stage,

Peenya Industrial Estate,

Bangalore 560058, India

Phone: +91 80 28364387/ 40958509

Mobile: +91 9845520543, 9945610532

E mail: info@boxtech.in , sales@boxtech.in

Website: www.boxtech.in