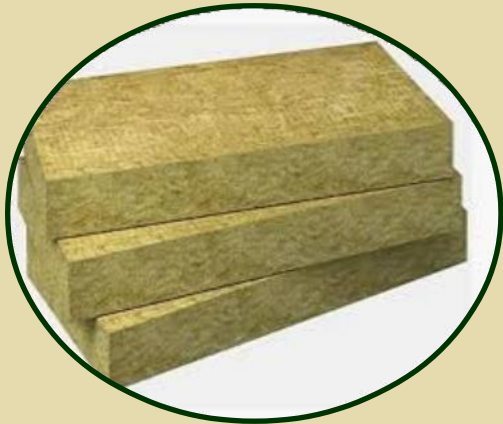




FIBRE GLASS INSULATIONS



ROCKWOOL



THERMOCOL PIPE SECTION



BITUMEN

Manufactures & Traders

1. Glass Wool	2. LRB Mattress	3. Mineral Wool
4. Rockwool	5. Thermocol Sheet	6. Nitrile Rubber
7. Puff Sheet & Pipe Sec.	8. XLPE Insulation foam	9. Aluminium Sheet
10. Polycarbonate Sheet	11. G.I. Color Coated Sheet	12. Turbo Ventilator
13. Tar felt	14. Bitumen	15. APP Membrane

Welcome to Fibre Glass insulations:-

With an experience of over 30 years, we, “**Fibre Glass Insulations.**”, are indulged in the Supply of an extensive range of good quality materials for HVAC and Construction Industry. We are obtaining materials from trusted vendors to ensure the quality of the material. Furthermore, our emphasis on quality along with timely deliveries has helped us in an extensive clientele base.

Fibre glass Insulations has been promoted by **Mr. Suman Paruthi** who has been associated with the trade for over 30 years and under his valuable expert guidance we try and give highly professional and prompt services and quality materials to our esteemed customers.

Our range includes Loose Glass wool, Fiberglass wool, Rock wool Slabs & LRB, Ceramic wool and Blanket, Thermally Bonded Polyester Wool, Nitrile Foam, Bitumen, Tar felt, Shalikote, CPRX Compound, Expanded Polystyrene (Slabs & Pipe section), Extruded Polystyrene Rigid foam boards, For Buried MS Pipe Lines – Reinforced With Fiberglass Tissue/Polyester Mat, Adhesives & Sealants for Insulation, Chicken Wire Mesh, Hessians, GI Binding Wire etc. All these products are in tune with the industrial standards and abide by the company’s protocol.



Fibre Glass Wool:-

Density 12-80kg/m³

Rolls

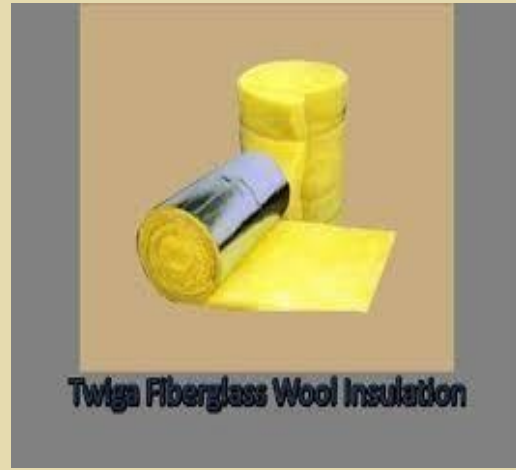
Slabs

Board

Aluminium Foil Faced

FG Tissue Faced

Temperature (-) 195°C (+) 230°C



Twiga Insul is a lightweight, compressible insulation material, consisting of Fibre bonded together by a high temperature binder. The product is light gold I color and its superior tensile strength,

Handle ability and resilience offer significant advantage during transport and installation. These unique characteristics of glass wool, combine with its fire safe properties, make it especially suitable for a wide variety of thermal and acoustic insulation applications, ranging from duct and metal roof insulation to application in solar collectors and generator acoustic enclosures. Twiga insul is available in rolls slabs and board – in various densities and thickness and with a wide range of factory applied facings.

RESIN BONDED ROCKWOOL:-

Slabs

Resin Bonded Rockwool

1. Density 48,64,96 & 144 kg/m³

LRB Mattress

1. Density – 100, 120 & 150 kg/m³
2. Temperature Up to 750 Degree C
3. Conforms to IS-8183

Pipe Section

1. Density- 144 kg/m³
2. Temperature: Up to 750 Degree C
3. Conforms to ISI-9842



LRB MATTRESS

LRB Mattress is a precisely engineered Bonded fibers insulation that offers max. Resistance to the passage of heat. Rockwool Fibers are spun from selected rocks melted at High temp. And bonded with thermosetting resin. They are then felted in a predetermined Fibre Lay pattern and are backed to form mattresses Of a predetermined density and thickness with uniform Fiber distribution.



ROCKWOOL PIPE SECTION

Rockwool Pipe Insulation is a precisely Engineered, bonded fibrous insulation that offers maximum resistance to the passage of heat. Rockwool Fibres are spun from selected rocks, melted at 1600°C and blended to a carefully adjusted chemical composition.



ROCKWOOL PIPE INSULATION

Rockwool Pipe Insulation products are Available for hot face temperatures up to 750°C. The sections are moulded to ensure a firm fit around the piping and the outer surface is ground to ensure that correct insulation thickness is achieved and to provide a smooth, even surface.



ROCKWOOL BUILDING ROLL

Rockwool Rolls is a highly efficient low density insulation material made from non-combustible Rockwool fibers & bonded together by thermosetting resins.

The product is easy to handle, cut & install. It is factory laminated with reinforced Aluminium foil on one side, and if required, can be provided with glass tissue lamination on the other side.



MINERAL WOOL

Loose Mineral Wool is a high temperature insulating fibers processed from natural Rocks of selected quality. The Loose Mineral Wool having exceptionally long fibers and superior technical properties essential to meet severe service condition Loose Mineral Wool can be used for insulating equipment's, tanks, pipelines, ovens, furnaces, and buildings.



CERAMIC BLANKET:-

Unique Features-

1. High Temperature stability and very good thermal shock resistance.
2. Very low Heat Storage.
3. Very low thermal conductivity at very high mean temperature.
4. Available in customized / tailor made shapes and sizes for Turbines, Valves, Flanges and Pipes etc.



Fibre Mesh:-

Fibreglass Reinforcement solutions that are less costly and more effective than steel. High performance, full strength, alkali-resistant products will not rot, rust or corrode. They are also lightweight and easy to install and use. These innovative, superior alternatives to steel mesh are easy to work-with, will not rust or rot and provide increased strength in every cementations application.

Fibreglass Reinforcement Mesh is used for reinforcement of inside concrete floors and walls elimination of cracks during repair of thin concrete layers and other non-structural concrete applications in buildings.

Benefits of Fibre Mesh:-

1. Easy to carry handle
2. Simple Application (Cutting)
3. Cheaper than iron mesh
4. Quick use



Fibre Sheet:-

Designer Fibre Roofing sheets, manufactured by us, Are designed by in-house experts to give a refreshing Look to any interior/ exterior décor. Our Designer fibre Roofing sheets are manufactured using superior-quality Raw materials and advanced technology



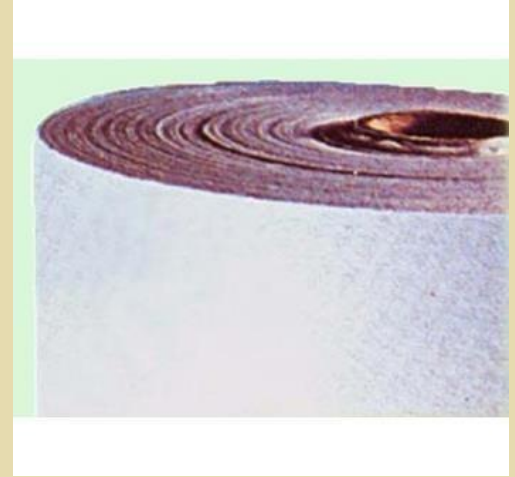
Features-

1. Maintenance Free
2. Water Resistant

Anti-corrosive construction

Fibre Glass Tissue:-

1. For Insitu Water Proofing as well as base Membrane for Roofing Felts
2. For Anticorrosive, Treatment of under Ground pipe lines.
3. For Inner Wrap and outer wrap
4. Black tissue as a facing for insulation material
5. Conforms to: AWWA — C – 203 & IS -10221



RP Tissue:-

RP Tissue is a non-woven, thin, flexible, uniformly bonded mat composed of technically resistant suitable Glass Fiber, distributed in a random, open porous structure, bonded together with an inert material.

Applications and other Characteristics:-

1. RP Tissue is available in a variety of densities and reinforcement spacing options.
2. for Facing in Genset Accoustic.
3. Serves as wrap for both underground and over ground pipeline systems to counter natural and artificial corrosion.
4. Suitable for in-site waterproofing or waterproofing in form of roofing felt.
5. Serves as both a reinforcement and protection system.

APP WATER MEMBRANES:-

APP waterproofing membrane provide superior Tensile Strength while maintaining critical flexibility

– Even in the coldest environments.

Additionally, with APP roofing membranes

(Coated with a proprietary blend of asphalt

And atactic polypropylene). Contractors now have

An efficient mode of application by heat welding.

The main advantage of our APP Membranes include

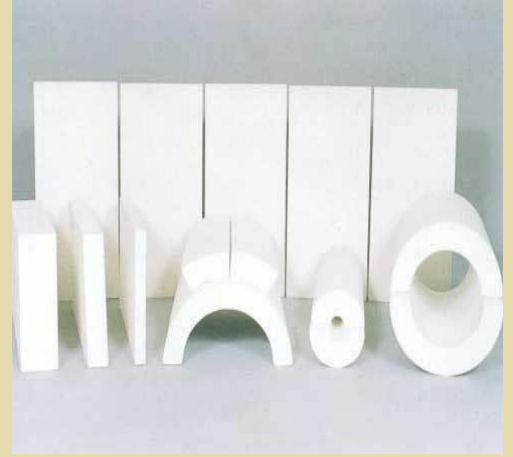
1. Increase flexibility at low temps
2. Improving flow resistance at high temps
3. Excellent weathering
4. Fire resistance properties



Hysil Calcium Silicate Blocks:-

Product Details:-

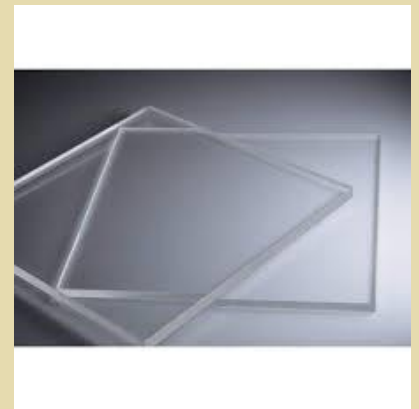
For use in	Side wall, partition wall
Operating Temperature	800-1100 Degree C
Moisture Content	5.0%
Brand	Hysil
Thickness	25,40,50,65,75,100 mm
Standard Size	1000X500, 900X600 500X150, 600X150 450X150 mm



Hysil – Calcium Silicate Blocks and pipe covering are designed to withstand High temperature as well as feature superior structural strength. Further, the use of hydrous calcium silicate make these blocks and pipes suitable for use in systems operating up to 1200 Degree Celsius. These are suitable for use in industry sectors like chemical plants, refineries, steam electric power plants and others.

Acrylic Sheet:

The most common form of acrylic, the flexibility of clear sheeting is Evidenced mainly by the staggering variety of dimensions it can be ordered in Thickness range from four inches to a 1/25th of an inch; widths from three feet To ten feet; length from four feet to twelve and a half feet.



Fibreglass Cloth:-

Backed by rich industry expertise, we are offering our clients a Wide range of Fibreglass cloth. Offered range of cloth is Available in many types from 0.05 mm thick to 1.5mm thick, from 30gsm to 1000gsm.



Expanded Polystyrene (Thermocol)

P & TF Quality

Slabs:

1. Density- 14 kg/m³ to 30 kg/m³ onwards

Pipe Section

1. Density- 14-30 kg/m³ onwards
2. Temperature: (-) 200°C to (+)80°C
3. Conforms to IS- 4671



Applications and other characteristics

We offer a complete range of Expandable polystyrene insulation products i.e. Normal and Self-extinguishing type available in entire range of densities, suitable for its various applications like

1. Commercial Air-conditioning
2. Residential Air-conditioning
3. Air-conditioning in Industrial houses Twiga insul is available in rolls slabs and board – in various densities and thickness and with a wide range of factory applied facings.

THERMOCOL SHEET:-

Providing you the best range of EPS thermocol sheets and industrial thermocol sheet with effective & timely delivery

Product Details:-

Usage/ Application	Household use, Reselling, industry use
Product Type	Moulding Blocks, Sheets, Boxes
Color	White
Grade Standard	Normal, TF



Features:-

- Light weight
- Eco Friendly

Tarfelt :-

TarFelt® LM is a single component, water based elastomeric polymerized bituminous emulsion with selected graded fine fillers and some additives TarFelt® LM is applied by brush / roller without any use of heat. TarFelt® LM forms a tough, elastomeric, monolithic, seamless water proofing membrane.

Application

1. Waterproofing of industrial roof – corrugated asbestos/ galvanized iron steel/ others.
2. Rejuvenation of existing bituminous membrane- Hession / HMHDPE based membrane.



Industrial Bitumen:-

Industrial Bitumen is a dark petroleum residue modified by oxidation process. Its consistency range from highly viscous to solid. Industrial Bitumen is a safe and inexpensive material which has multiple users in industry and a wide range of application and has characteristic of waterproofing, adhesive and resistance towards acid and alkalis.

Advantage:-

1. Easy to apply
2. Excellent Durability piping
3. Comparatively cheaper and widely available



ALUMINIUM

Aluminium is a versatile material with broad range use. Our Aluminium sheets find applications in diverse industries. Durability, high quality and corrosion resistance are common characteristics. These sheets are used in almost all industry areas. They have low weight with special mechanical properties the most widely used Aluminium form, the sheets are used for light fabrications, automotive repairs, car body panels, machine building, enclosures, etc.



TURBO VENTILATOR

Fibre glass insulation is the trusted manufacture of wind driven turbo air ventilators which are widely demanded in the industries where emittance of excessive heat can damage roof sheathing. Our wind ventilator helps ventilate hot emission and replace it with fresh air from outside there by preserving the life of the roof. The Loose Mineral Wool having exceptionally long fibers and superior technical properties essential to meet severe service condition Loose Mineral Wool can be used for insulating equipment's, tanks, pipelines, ovens, furnaces, and buildings.



COLOR COATED SHEET:-

Surface Treatment	Color Coated, Galvanized
Technique	Cold Rolled
Material	Metal, Aluminium Alloy
Input Width	90 mm to 1400 mm
Supply Width	745 mm to 1245 mm



With our vast industrial experience, we are serving wide range of GI Roofing sheet in the industry.

SOLID & MULTIWALL

POLYCARBONATE SEET:-

Surface Treatment	Color Coated, Galvanized, Multiwall
Technique	Cold Rolled, Clear Glass, Hot Rolled
Color	Customized
Solid Thickness	1.0mm/1.5mm/1.7mm/2.0m m/3.0 mm/4.0mm to 10.0mm
Multiwall Thickness	6mm/8mm/10mm
Features	Water Proof



Technical Properties:-

1. Excellent weathering property
2. Excellent light transmission ranging from

POLYURETHANE FOAM (PUF):-

Density – 36 ± 2 kg/m³ or as per requirement

1. Slab
2. Pipe Section Conforms to IS- 12436
3. PUF Supports
4. PUF Liquid
5. PUF Panels
6. Tank Filling

PU FOAMS

PU Slabs : These are made to standard size of 1000 mm X 500 mm, 1000mm x 1000mm, 4' x 4' and a special size of in various thickness ranging from 5 mm to 500 mm and density ranging from $34 \text{Kg} \pm 2 \text{Kg/Cu.m}$ to $60 \text{Kg} \pm 2 \text{Kg/Cu.m}$. **We offer customized corrugated sheets as per customer profile.** Used for various applications in cold storage. Cold plants, freezers, false ceilings etc.



NITRIL RUBBER:-

Nitrile Rubber is a flexible thermal insulation Material made from Closed-cell, elastomeric nitrile rubber foam. It is production formed sheet and pipe section.

Product Features

1. Completely closed cell elastomeric nitrile insulation
2. Quick and easy install with no special tools.
3. Flexible, Compression strength due to closed cell structure.

Application

1. Duct Insulation
2. Raised Floor insulation
3. General Thermal insulation
4. Cold Storage insulation
5. Chilled Water





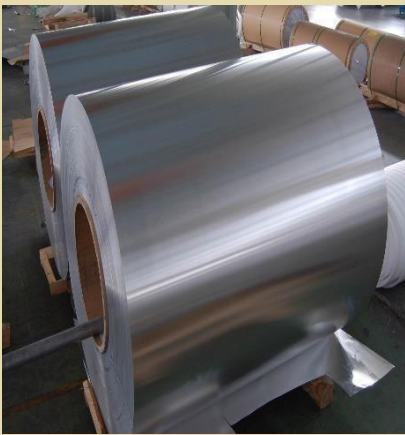
LRB Mattress



Glass Wool



Ceramic Wool



Aluminium Sheet



Color Coated Sheet



Resin bonded Slab



Turbo Ventilator



FRP Base Plate



XLPE



Acrylic Sheet



Tarfelt



Fibre Mesh



Thermocol Sheet



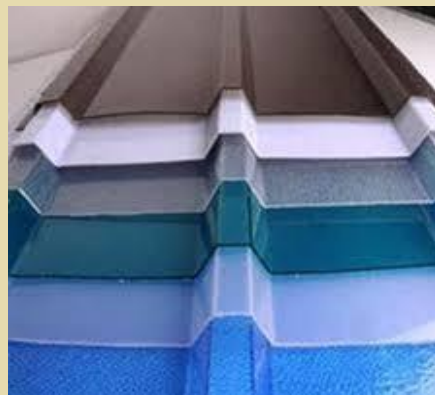
CPRX Compound



Bitumen



Aluminium Foil
Double Bubble Heat
Insulation Material



Polycarbonate Sheet



Nitrile Rubber



Designer Fibre Sheet

Mr. Suman Paruthi (Director)

Office:- C-214, Bulandshahr Road, Industrial Area, Opposite Sliver city Multiplex, Ghaziabad (U.P.) -201009

Factory: - Plot No. G-45, Industrial Area, Udyog Kunj, Ghaziabad (U.P.)

Website: - fibreglassinsulations.in

Contact No. - 9810166542 / 9310166542

Email - insulationfg@gmail.com