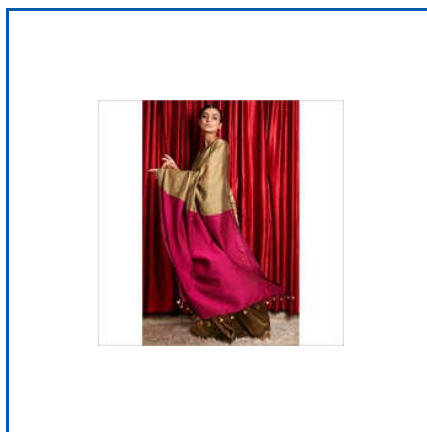




Chikankari Saree, Designer Blue Khadi Fabric Saree, Designer Cotton Saree, Designer Muslin Jamdani Saree, Designer Printed Muslin Jamdani Saree, Dual Color Traditional Saree, Fancy Embroidery Cotton Saree, Fancy Handloom Khadi Fabric Saree, Floral Print Muslin Jamdani Saree, Grey Handloom Box Sequence Saree, Jamdani Saree, Ketia Jute Saree, Khadi Saree, Maheshwari Cotton Saree, Matka Saree, etc.



DESIGNER COTTON SAREE



**FANCY EMBROIDERY COTTON
SAREE**



STYLISH COTTON SAREE

About Us

Shree Krishna Sharee Palace is dedicated to creating beautiful sarees that reflect the rich heritage of Indian textiles. As a manufacturer and supplier, our company focuses on offering elegant and comfortable sarees that combine traditional craftsmanship with contemporary style preferences. We believe that a saree is not just a garment but a symbol of culture, grace, and timeless beauty. Our collections are designed to provide women with attire that enhances their confidence while preserving the charm of traditional weaving and fabric artistry. Our product range includes Designer Cotton Saree, Chikankari Saree, Jute Sarees, Pure Khadi Fabric Saree and Muslin Jamdani Saree. Each category is carefully developed to provide variety, style, and comfort for different occasions. These sarees are appreciated for their elegant textures, attractive patterns, and breathable fabrics that make them suitable for both everyday wear and special events. By offering diverse designs and fabric choices, Shree Krishna Sharee Palace ensures that customers can find sarees that match their individual taste and style.

Quality is an important aspect of every saree we produce. We pay close attention to fabric selection, weaving techniques, and finishing details to ensure our sarees deliver both comfort and durability. Our materials such as cotton, khadi, jute, and muslin are chosen for their natural texture and aesthetic appeal. The careful crafting process helps us maintain a balance between traditional design elements and modern fashion expectations.

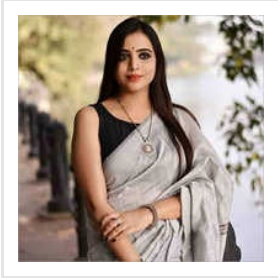


Key Facts

No of Staff	2
Year of Establishment	2021
OEM Service Provided	No



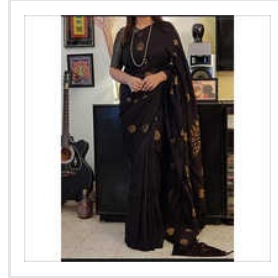
Our Products



**Grey Handloom Box
Sequence Saree**



**White Handloom Box
Sequence Saree**



Tissue Linen Saree



Chikankari Saree



Khadi Saree



**Maheshwari Cotton
Saree**



Matka Saree



**Multi Color Cotton
Saree**



Pure Cotton Saree



Pure Maslin Saree



Pure Mul Cotton Saree



**Pure Reshom Matka
Saree**



Yellow Cotton Saree



Ketia Jute Saree



**Dual Color Traditional
Saree**



**Yellow Handloom Box
Sequence Saree**



**Shree Krishna
Sharee Palace**

**SHREE KRISHNA SHAREE
PALACE**



+918101287553



ADDRESS

**Near Habibpur Railway Station,
Village Raghavpur, Post-
Panpara, Dist- Nadia, Ranaghat,
West Bengal, India (741402).**



EMAIL

shreekrishnashareepalace@gmail.com



MOBILE

+918101287553



WEBSITE

shreekrishnashareepalace.tradeindia.com

KEY PERSONNEL
Mr. Koushik
(PROPRIETOR)

DESIGNED AND
DEVELOPED BY

**trade
india.**