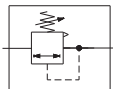


Airmatic

AIR LINE REGULATORS

STANDARD SERIES

SERVICE : AIR / GAS / WATER



Regulators

- High Flow Capacity
- Rugged Diaphragm Design
- For application requiring constant pressure with wide variation in flow

Technical Data

Material Specification

Body	Diecast zinc / Aluminium Alloy	
Spring Cage (Bonnet)	Diecast Aluminium	
Diaphragm	Buna N Impregnated *	
Spring	Pressure	Zinc Plated Steel
	Valve	Stainless Steel
Bottom Plug	ALU	
Seals	Buna - N	
Trim Assy.	ALU / Brass / St.Steel on request	

* Optional Neoprene / Viton Diaphragm.

Standard Features

Type	Diaphragm, Relieving
Outlet Pressure Range Adj.	0 to 9 Kg/cm ²
Gauge Ports	Two (G1/4)

Ordering Reference

SIZES	G1/4	G3/8	G1/2	G3/4	G1	G1.1/4	G1.1/2	G2
Non Relieving	A 118-02	A 118-03	A 118-04	A 118-06	A 118-08	A 118-10	A 118-12	A 118-16
Relieving	A119-02	A119-03	A119-04	A119-06	A119-08	A119-10	A119-12	A119-16
Flow in SCFM	60	70	80	380	380	400	450	600

Typical flow at 7 kg/cm² (100 psi) with 1 kg/cm² (14.7 psi) Δp

Service Kits

		G1/4-G1/2	G3/4-G1	G1.1/4-G1.1/2	G2
Service Kit	Relieving	SR-OR	SRA-OR	SRB-OR	SRB-ORA
	Non Relieving	SR-ONR	SRA-ONR	SRB-ONR	SRB-OANR
Diaphragm Assy. Kit	Relieving	SRC-04R	SRA-07R	SRB-04R	SRB-04R
	Non Relieving	SRC-04NR	SRA-07NR	SRB-04NR	SRB-04NR

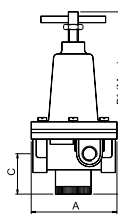
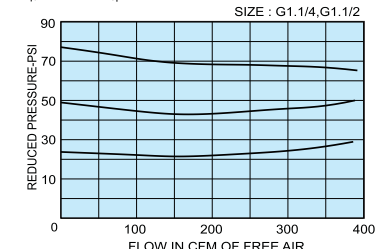
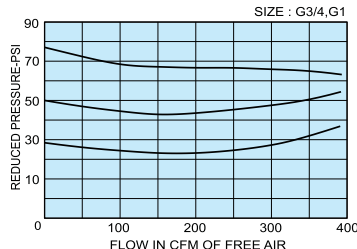
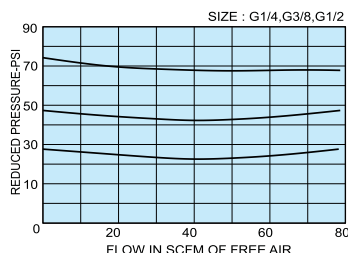
Reduced Pressure Range

Available in four reduced Pressure ranges suffix.

1. for 0 to 2 kg/cm²
2. for 0 to 4 kg/cm²
- * 3. for 0 to 9 kg/cm²
4. for 0 to 15 kg/cm²

* Unless otherwise specified. 0-9 Kg/cm² (0-125) will be supplied.

Flow Curves



ALL DIMENSIONS ARE IN MM.

STD REGULATOR CAT.



Condition of use

Maximum Supply Pressure	12 Kg/cm ²
Maximum Op. Temperature	75°C

Accessories & Options

	SUFFIX	
Panel Mounting	P	
Mounting Bracket	G1/4 - G1/2	BC
	G3/4 - G1	BD
Round Knob	RK	
Trim (St. Steel)	SS	
Pressure Gauge 55mm Dial G1/4 Back Connection	Range 0 to 2.1 Kg/cm ²	GB-1
	0 to 4.2 Kg/cm ²	GB-2
	0 to 10.6 Kg/cm ²	GB-3
	0 to 21 Kg/cm ²	GB-4
Water application	W	
0-10.6 Kg	GB-355	
St. Steel 304		

Model Ordering Code Instruction

A119 - 04 - - 3 - - P - RK - BC - GB-3 - W - SS

Model	Sizes	Conn.	P-Panel	BC - Mtg. Bkt. (1/2")	W- Water
Std.Regulator	02 - G1/4	Blank - BSP	Mounting	BD - " 3/4"	Application
A119 - Relieving	03 - G3/8	N - NPT			SS-St. Steel
A118 - Non	04 - G1/2	ASA 150			Trim
Relieving	06 - G3/4	BSTD - Flange	RK-Round Knob		
	08 - G1	BSTF			
	10 - G1 1/4	Outlet Pr. Range	Diaphragm		
	12 - G1 1/2	1 - 0-2 Kg/cm ²	Blank - BUNA N		
	16 - G2	2 - 0-4 Kg/cm ²	VD - Viton		
		3 - 0-9 Kg/cm ²	ND - Neoprene		
		4 - 0-15 Kg/cm ²			

Dimensions & Weights

SIZE	G1/4	G3/8	G1/2	G3/4	G1	G1.1/4	G1.1/2	G2
	DIMENSIONS (MM)							
A	72		118		144		137	
B	170		265		300		310	
C	33		48		56		70	
Net Wt. (Kg)	0.800	0.775	0.770	2.100	2.000	3.260	3.180	3.520
Gross Wt. (Kg)	0.845	0.820	0.815	2.250	2.170	3.500	3.420	3.760