



NUTECH[®]

NUTECH JETTING

HYDRO-JET THE WONDER TOOL

INSIDE

- JETTING SYSTEMS
- DIESEL MODELS
- OD CLEANING
- TUBE ROTATORS
- LANCE MACHINES
- DUMP GUN & FOV
- NOZZLE RANGE
- HOSE & LANCE
- ADAPTORS & INSERTS
- SAFETY GEARS
- BUILD OPTIONS

CATALOG 2025

www.nutechjetting.com

WHY CHOOSE NUTECH JETTING?

BACKED BY EXPERIENCE. BUILT FOR PERFORMANCE.



IN HOUSE MANUFACTURING
Complete control over quality



CUSTOM JETTING SYSTEMS
Tailored to your plant's needs



PROVEN PERFORMANCE
Trusted by 500+ plants nationwide



AFTER-SALES SUPPORT
Dedicated service, fast response



RUGGED & RELIABLE
Built for India's toughest industries



INDIA'S WIDEST RANGE
Nozzles, hoses, foot valves & more

40 YEARS OF JETTING EXCELLENCE



FOR MORE DETAILS VISIT
WWW.NUTECHJETTING.COM

CONTACT US
+91 9810862162 +91 7838500405
sales.jetting@nutechgroup.org



INDEX

CATALOG 2025

HYDROJET THE WONDER TOOL

● INDIA'S JETTING PARTNER FOR 40+ YEARS	Pg 01
● ELECTROJET SERIES, BUILD OPTIONS , DIESEL OPTION	Pg 3-6
● OD CLEANING SYSTEM - ODEX ALPHA	Pg 7-8
● RIGID LANCE MACHINE - RMUL 3	Pg 9-10
● ROTATING HOSE DEVICE - RHD 200	Pg 11-12
● FOOT OPERATED VALVE & DUMP GUN	Pg 13-14
● HIGH PRESSURE NOZZLES	Pg 15-16
● HOSE & WHIP CHECK	Pg 17
● RIGID & FLEXIBLE LANCE	Pg 18
● ADAPTERS & INSERTS	Pg 19-20
● UNLOADER & SAFETY VALVE	Pg 21-22
● VALVE CARTRIDGES	Pg 23
● HIGH PRESSURE SAFETY SUIT	Pg 24
● APPLICATIONS & INDUSTRIES WE SERVE	Pg 25-26

ELECTROJET

HIGH PRESSURE MACHINES

HYDROJET THE WONDER TOOL

EJS 2300P

Nutech Electrojet & Powerjet 2300/2000 series high pressure water jet machines are tried and tested workhorse. The design has gone through generations of upgrades since 1988, leading to a high quality, reliable, robust and continuous duty product. We use the latest materials available to ensure efficient performance, minimizing the cost of operation.

STANDARD FEATURES

- **Stainless Steel Pump Head** for durability and corrosion resistance
- **Solid Ceramic Plungers** ensure extended seal life
- **Overhead Water Tank** provides positive suction feed
- **Low Water Level Cut-Off** protects the pump from dry running
- **High-Performance Pressure Regulator** with premium seals and coated valve seats
- **External Reduction Gearbox** reduces heat inside the crankcase and is much more efficient over belt drives.
- **Robust Base Frame** coated with marine-grade primer and paint for long-lasting protection
- **IP-55 Control Panel** includes star-delta starter, ammeter, voltmeter, hour meter, emergency stop & indicators
- **Booster Pump with Pressure Switch** for stable inlet pressure
- **In-Line Filtration System** keeps contaminants out
- **High-Pressure Safety Valve** prevents overpressure
- **Thermal Protection System** with auto shut-off for crankcase and gearbox to prevent overheating



OPERATING WATERBLASTING
EQUIPMENT CAN BE
POTENTIALLY HAZARDOUS.

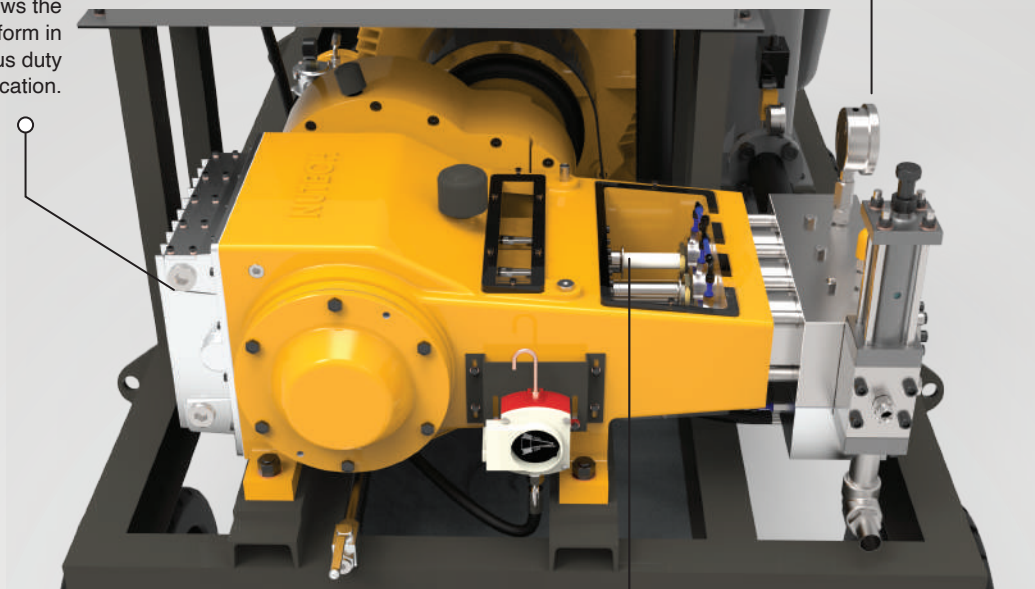
NEW SERIES

Advanced Cooling System

Cross flow fluid cooling
Faster and efficient cooling of oil allows the pump to perform in continuous duty application.

Robust Pump Head Design

Designed to make pump head, cavitation free for longer life. Most stable pump head in the industry today.



Super finished plungers

Manufactured in controlled process and environment. Higher achievable finish in the industry for longer life of seals.

Advanced Electric Panel

Equipped with advanced control system and safety features. Keeps the pump safe from human error.

Dual Stage Filtration System (Optional)

Comes with two stage of water filtration. Ensures the pump safety and longer life of the fluid parts. Higher achievable finish in the industry for longer life of seals.



Balanced Chassis Structure

A well balanced pump chassis for less vibration and stability during operation.

Remote Oil Circulation System

Designed to route the oil for efficient cooling and filtration.













NUTECH®

BUILD OPTION

CHASSIS	TROLLEY MOUNTED	SKID MOUNTED	CRASH FRAME MOUNTED
DRIVE	ELECTRIC MOTOR FLAME PROOF	ELECTRIC MOTOR NON FLAME PROOF	DIESEL ENGINE
FILTRATION	2-STAGE SS/CI FILTER	DUPLEX SS/CI FILTER	SIMPLEX SS/CI FILTER
OIL COOLING SYSTEM	CRANKCASE	GEARBOX	BOTH
WATER TANK	STAINLESS STEEL		MILD STEEL
SAFETY SENSORS	OIL LEVEL SWITCH	PRESSURE SWITCH	TEMPERATURE SENSOR
	TEMPERATURE SENSOR FOR CRANKCASE	TEMPERATURE SENSOR FOR GEARBOX	TEMPERATURE SENSOR PANEL
CONTROL & AUTOMATION	STANDARD STAND DELTA PANEL	PLC CONTROLLER + HMI	IoT CONNECTIVITY

TECHNICAL SPECIFICATIONS

Pump Model	Plunger Diameter (mm)	Stroke Length (mm)	Motor RPM / Pump RPM	Flow (LPM)	 90 kW	 110 kW	 132 kW*	 160 kW**
					 Max. Pressure (Bar)			
EJS.2300P.22	22	100	1488 / 331	38	1240	1380	-	-
			1488 / 425	48.5	950	1180	1380	-
EJS.2300P.24	24	100	1488 / 331	45	1040	1250	1380	-
			1488 / 425	58	800	1000	1200	1380
EJS.2300P.26	26	100	1488 / 331	53	880	1080	1180	-
			1488 / 425	67.5	700	850	1000	1180
EJS.2300P.28	28	100	1488 / 331	61	760	920	1020	-
			1488 / 425	78.5	600	720	880	1020
EJS.2300P.30	30	100	1488 / 331	70	660	800	890	-
			1488 / 425	90	520	630	750	890
EJS.2000P.35	35	100	1488 / 331	95.5	480	600	660	-
			1488 / 425	122.5	380	460	560	660
EJS.2000.40	40	100	1488 / 331	124.5	370	460	500	-
			1488 / 425	160	290	350	430	500
EJS.2300V.45	45	100	1488 / 331	157.5	290	360	400	-
			1488 / 425	203	230	280	330	400
EJS.2300V.50	50	100	1488 / 331	194.5	240	290	325	-
			1488 / 425	250.5	185	225	275	325

*Use of Crankcase and Gearbox oil filter and cooling system is recommended. #For intermitent operation only, Crankcase and Gearbox oil filter and cooling system is mandatory.



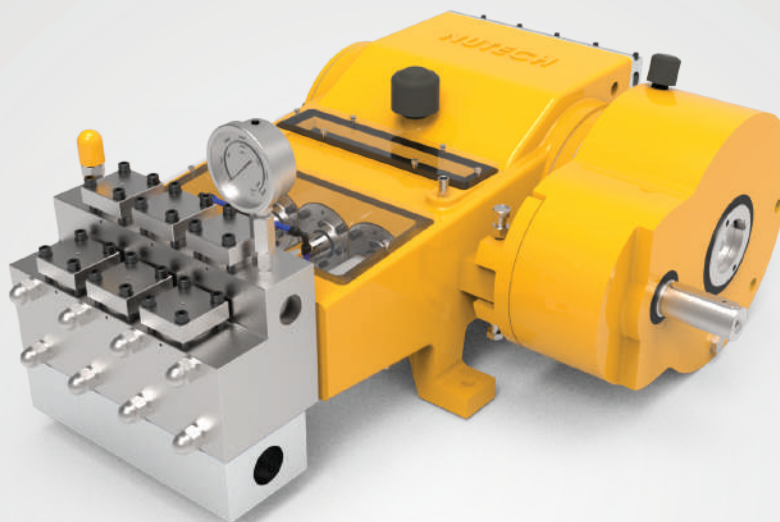
NUTECH®

HPS 2300V — VOLUME HEAD CONFIGURATION

The HPS2300V is designed for high-volume, low-pressure applications such as condenser and evaporator tube cleaning, large-area rinsing, and chemical flushing.

Built on the proven EJS2300P platform, this configuration offers:

- Flow rates up to **250 LPM**
- Pressure range: **185 to 400 bar**
- **Robust triplex plunger** pump design for continuous-duty use
- Efficient operation with **lower power consumption at higher flows**
- Available with both **Electric and diesel-driven systems**



ALSO AVAILABLE IN DIESEL ENGINE MODELS



PJS 2000 SERIES

- **SS pump head** with ceramic plungers
- Flow rate **38 to 250 LPM**
- Pressure **185 to 1380 BAR**
- **Heavy-duty**, low-maintenance design
- Equipped with **batteries, self starter and turbo charger.**

Our systems are available in diesel-powered configurations, ideal for remote or non-electrified sites.
Contact us for more details.

OD

CLEANING SYSTEM



HYDROJET THE WONDER TOOL

ODEX ALPHA

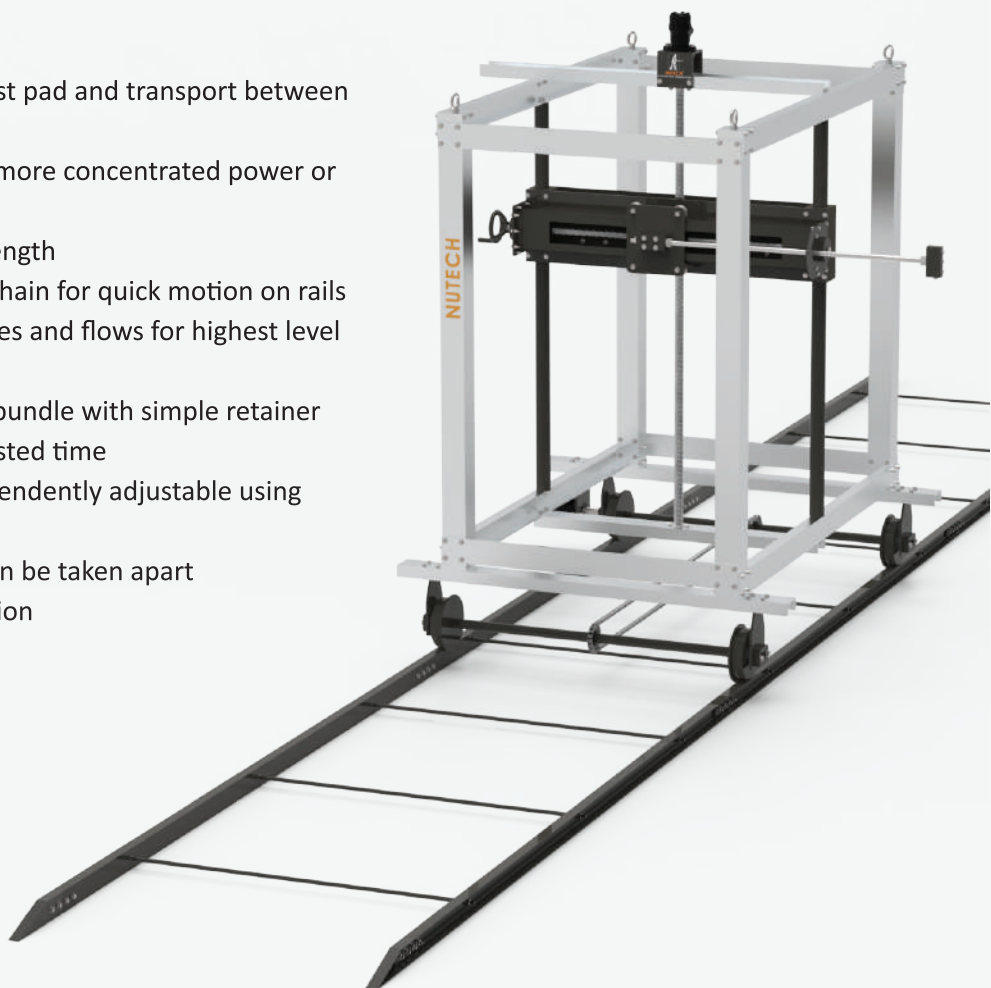
The ODEX Alpha system offers a powerful and affordable automated solution for external cleaning of heat exchangers and tube bundles. This system is ideal for contractors and plants interested in low maintenance, cost-effective, easy to use equipment. The ODEX Alpha is safer and more effective than traditional hand-held methods of shell side cleaning, and 1/3 of the cost of truck mounted systems. The ODEX ALPHA is offered in standard 39 ft (12m) rail length to accommodate almost all bundle sizes. The ODEX ALPHA gun is designed to travel in vertical axis to account for small and large diameters. The entire assembly is modular and can be taken apart for transportation or storage.

FEATURES:

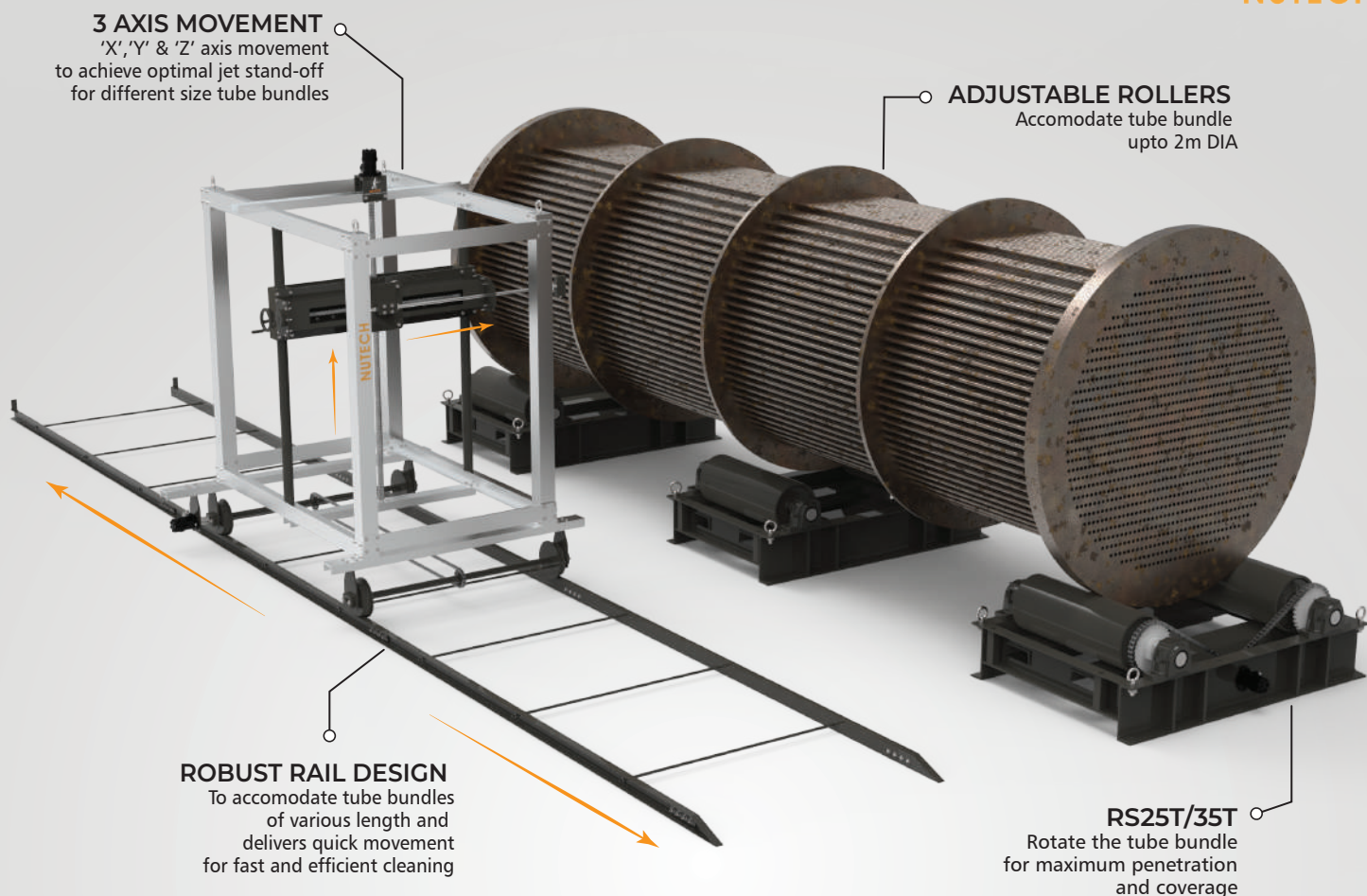
- Designed for maneuverability on a blast pad and transport between job sites
- Multiple nozzle options for delivering more concentrated power or covering a wider cleaning path
- Available in standard 39 ft (12m) rail length
- Two axis gun movement with driving chain for quick motion on rails
- Can be adapted to a variety of pressures and flows for highest level of cleaning efficiency
- Match the stroke length to each tube bundle with simple retainer stops for efficient cleaning with no wasted time
- Rotation and traverse speed are independently adjustable using remote control panel
- The entire assembly is modular and can be taken apart with simple hand tools for transportation
- Rollers are available to rotate the tube bundle for complete coverage
- Easy and cost-effective to maintain



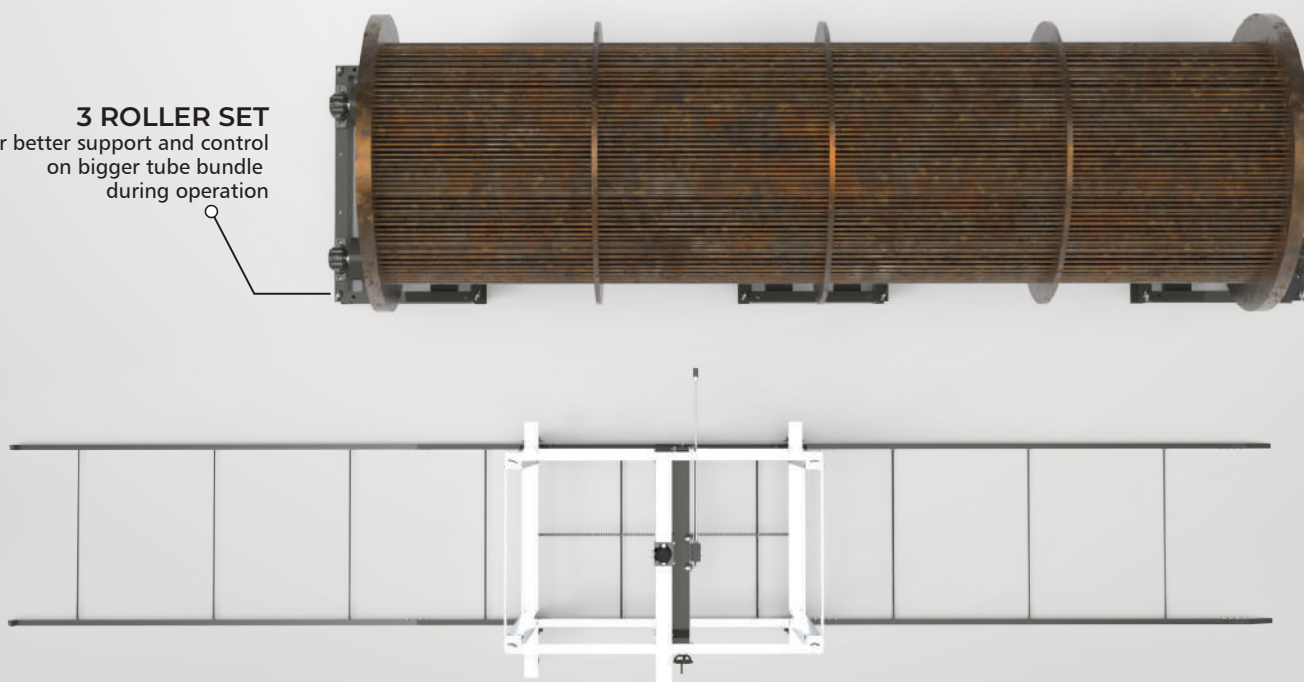
**OPERATING WATERBLASTING
EQUIPMENT CAN BE
POTENTIALLY HAZARDOUS.**



TOOL MODEL	PRESSURE RANGE	FLOW RANGE	LINEAR SPEED	POWER SUPPLY	RAIL LENGTH
ODEX Alpha	Up to 20,000 psi 1400 bar	Up to 95lpm 25 gpm	X-axis 8–49 m/min Y-axis 7–40 inch/min	Hydraulic	39 ft 12 m
TOOL MODEL	RS15T		RS25T		RS35T
LOAD	15 Ton		25 Ton		35 Ton
NO. OF SET	2		3		3



3 ROLLER SET
For better support and control
on bigger tube bundle
during operation



EXCHANGER CLEANING



HYDROJET THE WONDER TOOL

RIGID LANCE MACHINE

Rigid Lance Machines are the industry standard for both horizontal and vertical rigid lance cleaning of heat exchangers. These systems operate up to three lances and provide more forward jet power than flex-lancing to clean difficult deposits. Fully remote operation increases safety by removing the operator from the splash-back area.

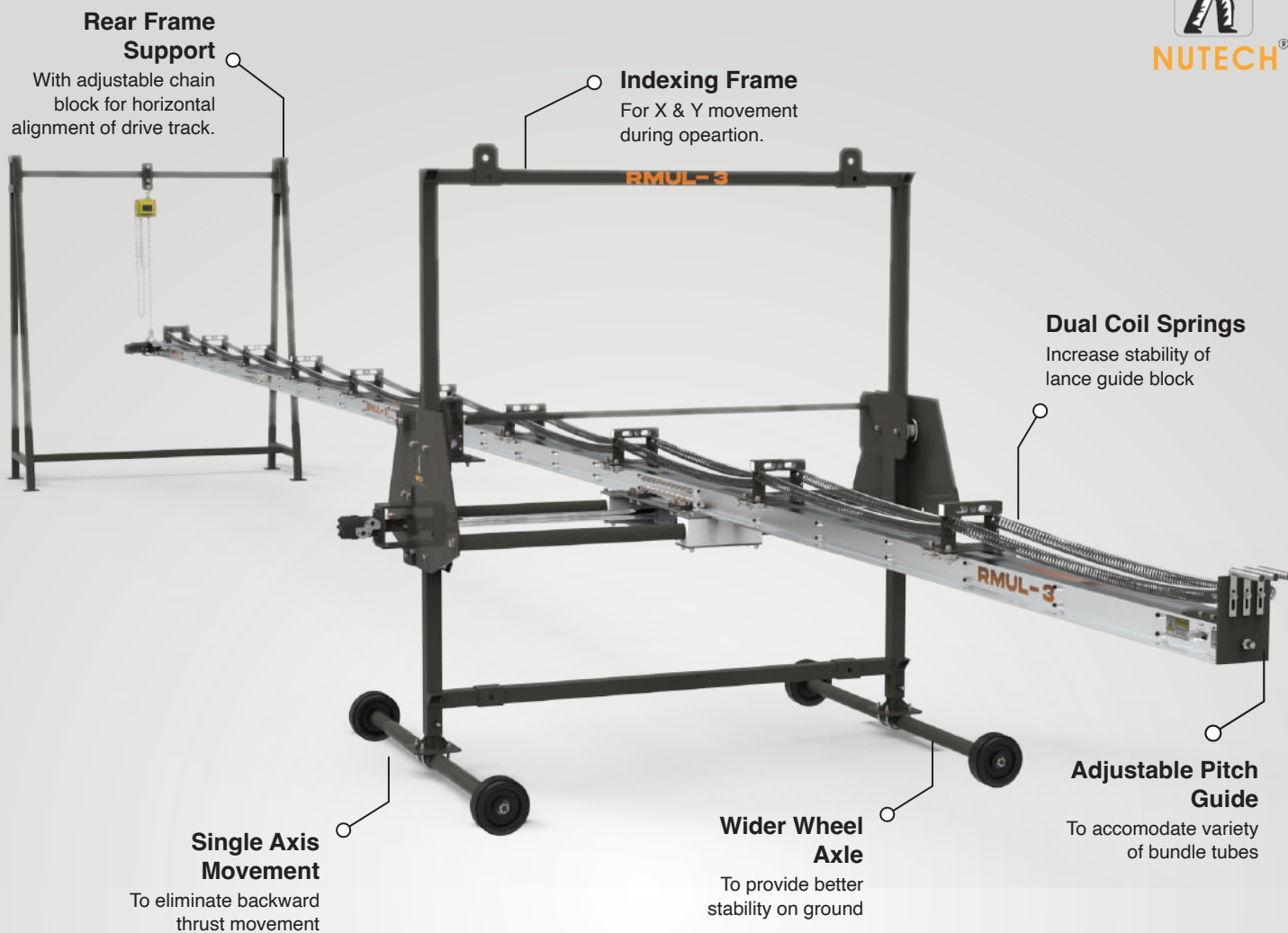
FEATURES

- Adapts to any size bundle and can be configured for horizontal or vertical operations to maximize flexibility.
- Operator can work from 25ft (7.6m) way from the splash back area for increased safety.
- Dual coil springs increase safety and stability of lance guide block.
- Single axis wheel to eliminate backward thrust movement.
- Equipped with upto 3 lances for maximum cleaning efficiency.
- Adjustable pitch guide to accomodate all types of bundle tubes.
- Rear frame with adjustable chain block for horizontal alignment of drive track.
- Ad-hoc drive track design for lances from 3 meter upto 12 meter length.
- Rigid lances made of hardened stainless steel to resist bending during operation.
- High strength stainless steel adaptors & connectors for seamless connectivity of lances.
- Heavy Duty indexing frame for stability.



**OPERATING WATERBLASTING
EQUIPMENT CAN BE
POTENTIALLY HAZARDOUS.**

TOOL MODEL	PRESSURE RANGE	FLOW RANGE	MAX RAIL LENGTH	STROKE LENGTH
NUTECH RMUL 3	Up to 20kpsi 1400 bar	Up to 95 lpm	14 m	12 m



ROTATING HOSE DEVICE

HYDROJET THE WONDER TOOL

RHD 200

Introducing the R.H.D. System, more commonly known in India as Rotomol, A revolutionary Hydro-Jetting Tool engineered to combat the persistent problem of fouling or scale in pipes. This innovative system is not just a tool, but a comprehensive solution designed to ensure the smooth operation and longevity of your piping infrastructure. One of the key strengths of the R.H.D. System is its adaptability. Depending on the type and condition of the fouled materials present in the pipes, the system can adjust its cleaning approach. This flexibility ensures optimal cleaning performance across a wide range of scenarios.

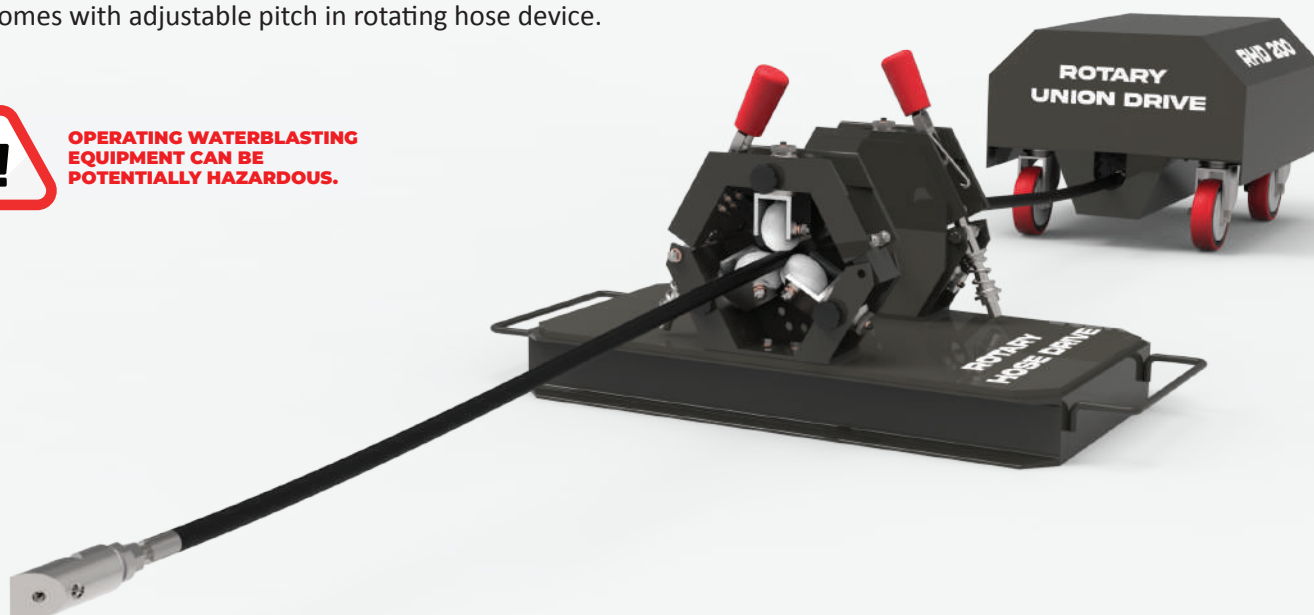
A small crew of just 2 or 3 people can set up and remotely control the R.H.D. System operations. This eliminates the need for manhandling Jetting Hoses or performing hard physical labor, making the cleaning process safer and more efficient.

FEATURES

- Adapts to pipe size from diameter 6 inches to 50 inches covering large variety of pipe applications.
- Operator can work from 25ft (7.6m) way from the splash back area for increased safety.
- Comes with centraliser and anti withdrawl device for better efficiency and safety.
- Specially designed jetting nozzle for precise and fast cleaning.
- Dual hose movement design for both forward and backward hose traction.
- High strength stainless steel adaptors & connectors for seamless connectivity of hoses.
- Mobile platform with rotary union for ease of operation and setup.
- Heavy Duty hose drive frame for better stability during hose rotation.
- Comes with adjustable pitch in rotating hose device.



**OPERATING WATERBLASTING
EQUIPMENT CAN BE
POTENTIALLY HAZARDOUS.**



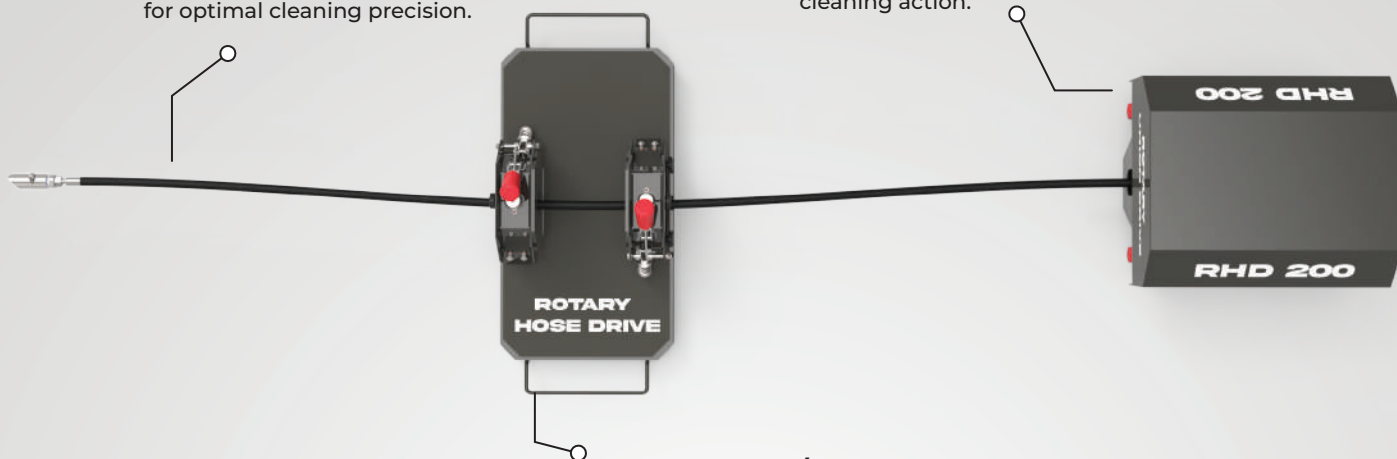
TOOL MODEL	PRESSURE RANGE	FLOW RANGE	ROTATION SPEED	PIPE DIAMETER	CLEANING LENGTH
RHD 200	Up to 20,000 psi 1400 bar	Up to 95lpm 25 gpm	5 RPM	50 Inches max	500 Feet

Twist and Clean

Revolutionize pipe maintenance with adjustable RPMs for optimal cleaning precision.

Effortless Cleaning, Exceptional Reach

The NUTECH RHD 200 Rotary Hose Device: Go the distance with up to 500ft of powerful cleaning action.

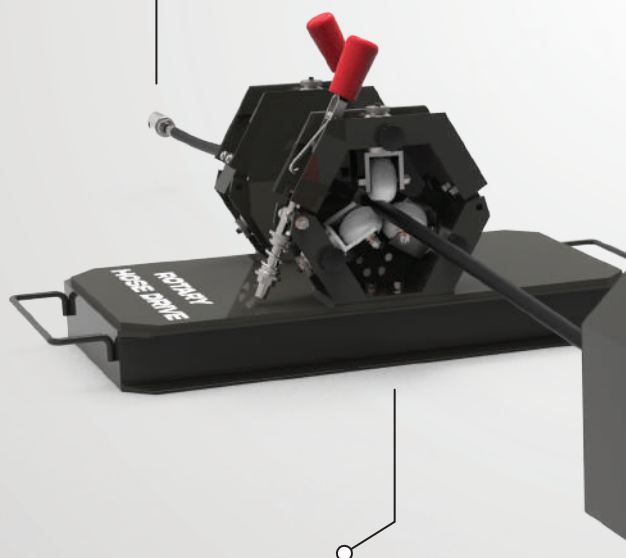


Hose Forward / Reverse Feeder

Change direction of hose with just a pull of levers.

Navigate the Bends

Our advanced nozzle design effortlessly tackles tight curves and hard-to-reach deposits.

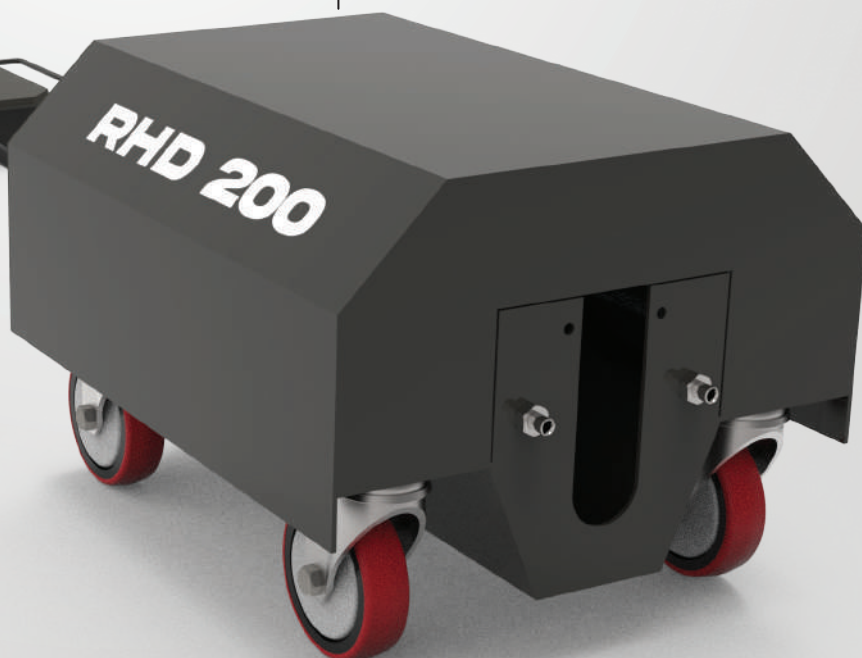


Safety in Every Spin

Our low-speed, high-pressure hose rotation ensures safe and thorough cleaning for all pipe types.

Cut Through the Toughest

Max cutting power for the most challenging pipe cleaning tasks.



DUMP FOV

FOOT OPERATED VALVE



HYDROJET THE WONDER TOOL

NFOV 20

Nutech foot operated valves are the most stable and reliable FOV in India. They are easily rebuilt in the field in 60 seconds by unscrewing the dump tube, which removes the used valve assembly. The operator then snaps a new cartridge style valve or replace the wear out part from the cartridge again put back into the dump tube adapter and returns the whole assembly to the FOV.

The safety shroud is designed to accommodate the foot even with high pressure jetting boot. The pedal is angled to avoid leg fatigue during longer working hours. Nutech NFOV is easy to carry and stable during high pressure application.

FEATURES

- Dump type fov thrive at working pressures **above 600 Bar**, drastically reducing jerk loads on HP pump.
- Replace cartridge in **within 60 seconds**
- Fully enclosed **safety shroud**, eliminating any chance of injury.
- **Easy carry** handle
- **Non Slip** texture foot pedal
- **Heavy Duty** Base Plate
- Working Pressure up to **1,380 Bar / 20,000 Psi at 80 LPM**



OPERATING WATERBLASTING EQUIPMENT CAN BE POTENTIALLY HAZARDOUS.



DUMP GUN

HIGH PRESSURE GUN



HYDROJET THE WONDER TOOL

NGUN 20

High Pressure Gun are the basic tools of water jetting, and Nutech offers more safety and ergonomic features than any other manufacturer. From adjustable grips and shoulder supports, to trigger locks and a quick-change cartridge seal, Nutech leads the way in operator protection and comfort.

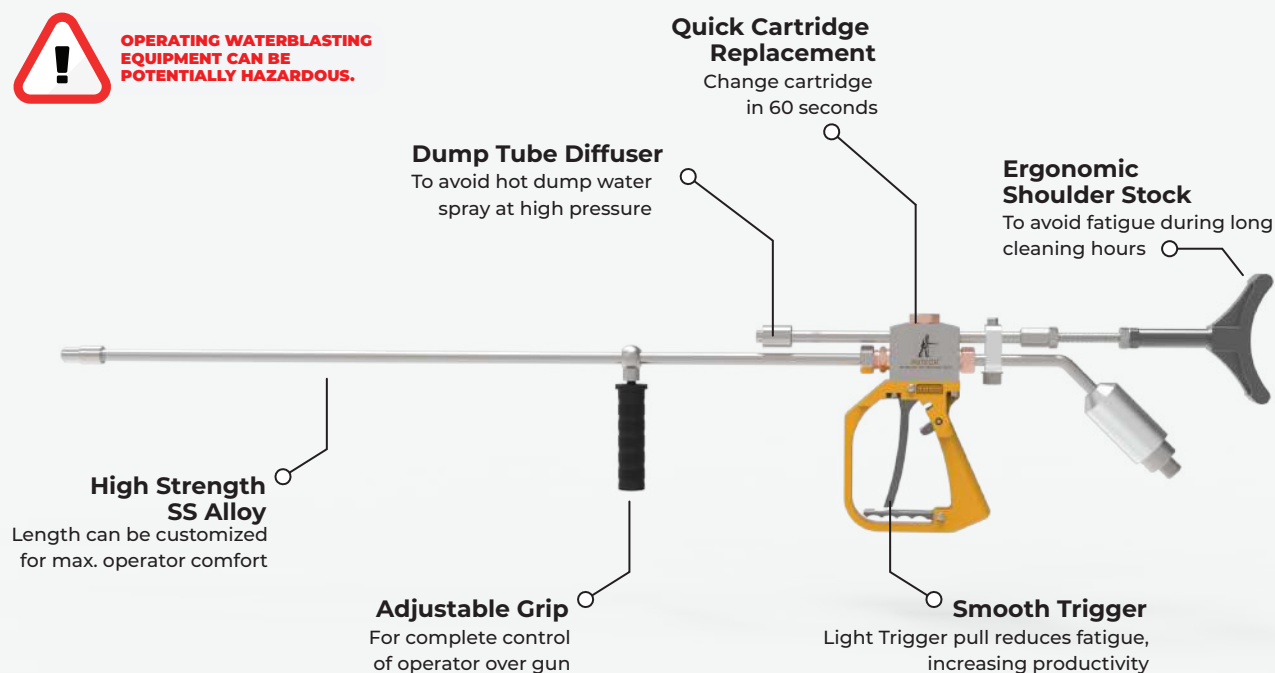
The Nutech NGUN Series comply with the latest recommended practices of the WJTA; each gun is designed to accept a safety shroud that enhances operator protection. The Nutech gun reduce hose stress with a 45° inlet tube that eliminates the hose bend radius behind the inlet connection. Hose friction is also reduced, since the hose no longer passes through a loop in the shoulder stock. Different barrel lengths are available.

FEATURES

- Dump type guns thrive at working pressures **above 600 Bar**, drastically reducing jerk loads on HP pump.
- **Replace cartridge** in within 60 seconds
- High Pressure lance made of **high strength Stainless Steel Alloy** and available in length from **75 cm to 120 cm**
- **Lightweight**
- Easy trigger actuation, **8-12 lbs. (3.6-5.5 kg)**
- **45° inlet tube** reduces hose stress
- Safety Trigger lock to help **prevent accidental** actuation
- **Adjustable shoulder** stock for maximum support for operators of different height
- Designed to accommodate **hose safety shrouds**
- Working Pressure up to **1,380 Bar / 20,000 psi.**



**OPERATING WATERBLASTING
EQUIPMENT CAN BE
POTENTIALLY HAZARDOUS.**



HP NOZZLES



HYDROJET THE WONDER TOOL

HIGH PRESSURE NOZZLES

Nutech Jetting offers a complete range of high-pressure nozzles designed for efficient and precise cleaning across various industrial applications. From internal tube cleaning to surface scaling removal, each nozzle is engineered for maximum performance, durability, and safety.

Whether you need radial jets for sidewall cleaning, rotating nozzles for full 360° coverage, or multi-step nozzles for heavy-duty descaling—our nozzle solutions cover it all. Built for efficient operation up to **1,380 Bar / 20,000 Psi**. These nozzles are compatible with both rigid and flexible lances and can be customized to meet plant-specific requirements.

TUBE CLEANING STANDARD

RADIAL & MIX FIRING NOZZLES

- Designed for Rapid tube cleaning of heat exchangers such as evaporators, condensers, pre-heaters and oil coolers
- **Radial:** Jets spray at 90° to clean tube walls
- **Mix Firing:** Combines radial and rear jets for cleaning and forward movement
- Suitable for both **rigid and flexible lances**
- Available for **tube IDs 12 mm to 50 mm**
- Withstands Pressure up to **1,380 Bar / 20,000 Psi**.



TUBE CLEANING MULTISTEP NOZZLE

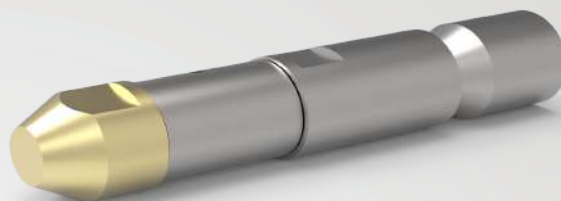
2 STEP & 3 STEP NOZZLES

- Built for deep cleaning in one pass
- **2-Step:** Rear + side jets for effective cleaning and propulsion
- **3-Step:** Adds an extra angle for stronger impact on tough deposits
- Customizable for **sugar mills and distillery plants**
- Works with **rigid and flexible lances**
- Handles pressures upto **1,380 Bar / 20,000 Psi**



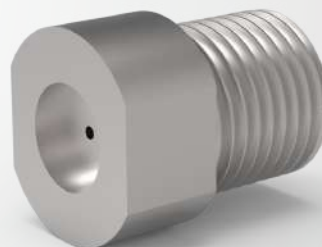
SPIN JET TUBE POLISHING NOZZLE

- Rotating nozzle head for **360° internal coverage**
- Ideal for polishing and final cleaning of tube interiors
- Removes **light scale, oxidation, and fine residue**
- Used in **evaporators, condensers, and heat exchangers**
- Best suited with **flexible lances**
- Operates Pressure up to **1,034 Bar / 15,000 Psi**



STRAIGHT JET GUN NOZZLE

- **High-impact**, straight jet for manual cleaning
- Removes tough **scale, blockages, and surface deposits**
- Ideal for cleaning **open surfaces and external equipment**
- Compatible with manual jetting guns
- Made from Durable **High Strength Stainless Steel**
- Working Pressure up to **1,380 Bar / 20,000 Psi**



PIPELINE CLEANING NOZZEL

- To be used with **RHD200**
- Designed for **large-ID, long pipes with bends**
- Rotating jet action for **full 360° internal cleaning**
- Clears **sludge, scaling, and heavy build-up**
- Suitable for refineries, chemical, food processing industries
- Best for complex pipe layouts
- Operates up to **1,034 Bar / 15,000 Psi**



HP HOSE & WHIP CHECK



HYDROJET THE WONDER TOOL

HIGH PRESSURE HOSES



HP hoses serve as a short, protective extension between the pump and the operator — absorbing shock and minimizing the danger of burst failures..

PART NUMBER	I.D	O.D	WORKING PRESSURE	BEND RADIUS	HOSE WEIGHT
HPH15K10XX	9.5 mm	23 mm	1,100 bar / 15,950 psi	150 mm	1.01 kg/m
HPH15K13XX	12.7 mm	27 mm	1,100 bar / 15,950 psi	230 mm	1.34 kg/m
HPH15K19XX	19 mm	28.7 mm	1,000 bar / 14,500 psi	310 mm	2.07 kg/m
HPH20K13XX	12.7 mm	26 mm	1,380 bar / 20,000 psi	230 mm	2.25 kg/m
HPH20K19XX	19 mm	33.3 mm	1,380 bar / 20,000 psi	280 mm	3.05 kg/m

where 'XX' is in 'mm'. E.g., Item code for 15 m of I.D 12.7 mm hose will be HPH15k15

WHIP CHECK ESSENTIAL HOSE SAFETY

A critical safety device for all high-pressure hose assemblies, whipchecks are designed to prevent dangerous hose recoil in the event of accidental disconnection or hose burst—protecting both personnel and equipment.

FEATURES

- **Heavy-duty steel cable** with reinforced looped ends
- **Auto-tightening spring** action grips instantly on separation
- Easy to install on any hose connection (**up to 1" diameter**)
- Available in both **Steel & Stainless Steel** material

WHY IT MATTERS:

High-pressure jetting poses serious risks if a hose fails. Whipchecks act as a passive safety mechanism—minimizing injury, equipment damage, and operational downtime.



RIGID & FLEXIBLE LANCE

HYDROJET THE WONDER TOOL

RIGID LANCES

Our dump-style hand lances are the industry standard for precision jetting and safe operation. Designed for use with a wide variety of nozzles and rated up to 20,000 psi, Nutech lances are fitted with ergonomic features for all-day use.

PART NUMBER	O.D	I.D	INLET CONNECTION	THREAD CONNECTION
RL10XXXX	10 mm	6 mm	M7	M7
RL12XXXX	12 mm	8.5 mm	1/8"BSP M	1/8"BSP M
RL16XXXX	16 mm	11.5 mm	1/4"BSP M	1/4"BSP M

where 'XXXX' is in 'mm'. E.g., Item code for 900 mm lance with OD 10 mm OD will be RL100900

FLEXIBLE LANCES

Flexible lances are the go-to solution for cleaning curved, narrow, or hard-to-reach tubes where rigid lances cannot operate. Built for high-pressure jetting with excellent maneuverability, Nutech flexible lances are ideal for heat exchanger tubes, boiler coils, and bends in process equipment.

PART NUMBER	O.D	I.D	CONNECTION END 1	CONNECTION END 2	SPIRAL	WORKING PRESSURE	BURST PRESSURE	BEND RADIUS
HPL615KXX	11.5 mm	6.4 mm	1/4"BSP	1/4"BSP	2 Layer	15,950 psi	39,875 psi	110 mm
HPL515KXX	9.5 mm	4.8 mm	1/8"BSP	1/8"BSP	2 Layer	15,950 psi	36,250 psi	95 mm
HPL415KXX	7.7 mm	4 mm	M7	M7	2 Layer	17,400 psi	43,500 psi	75 mm
HPL620KXX	12.6 mm	6.3 mm	1/4"BSP	1/4"BSP	4 Layer	21,750 psi	55,100 psi	110 mm
HPL520KXX	9.5 mm	4.9 mm	1/8"BSP	1/8"BSP	2 Layer	20,300 psi	50,750 psi	95 mm
HPL420KXX	8.10 mm	4 mm	M7	M7	2 Layer	20,300 psi	50,750 psi	75 mm

where 'XX' is in 'mm'. E.g., Item code for 6 m lance with I.D 6 mm will be HPL620K06

ADAPTORS & INSERTS



HYDROJET THE WONDER TOOL

Adaptors are the vital link between your high-pressure tools — connecting nozzles, lances, and hoses with leak-proof security and unmatched reliability.

At Nutech, we offer a carefully engineered selection of stainless steel adaptors rated up **1,380 Bar / 20,000 Psi**, designed to meet the extreme demands of industrial jetting with total confidence.

FEATURES

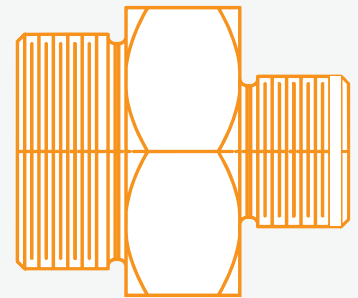
- **Precision-machined** for secure fit
- Compatible with **multiple thread** types
- Designed for **high-pressure jetting systems**
- Ensures **leak-proof and reliable** connections
- Available in **standard and custom** configurations
- Pressure Rating up to **1,380 bar/ 20,000 psi**
- Build from Tough **Corrosion Resistant SS**



MALE TO MALE ADAPTORS

MAX PRESSURE

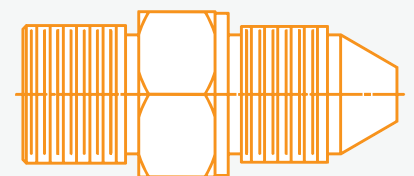
PART NUMBER	CONNECTION 1	CONNECTION 2	PSI	BAR
33800-110	1"BSP M Male	1/2"BSP M Male	15,000	1,034
33800-102A	1/4"BSP M Male	1/4"BSP M Male	15,000	1,034
33876-361A	1/2"BSP M Male	1/2"BSP M Male	15,000	1,034
33800-106	1/4"BSP M Male	1/2"BSP M Male	15,000	1,034
33800-109	3/4"BSP M Male	3/8"BSP M Male"	15,000	1,034
33800-107	M24 Male	M24 Male	15,000	1,034
33800-108	M22 Male	M24 Male	15,000	1,034
33800-111	1/2"BSP M Male	3/8"BSP M Male	15,000	1,034
33800-112	1/2"BSP M Male	1"Male UNF	20,000	1,380



MALE TO MALE ADAPTORS

MAX PRESSURE

PART NUMBER	CONNECTION 1	CONNECTION 2	PSI	BAR
7009	1/2" BSP M Male	1/2" BSP M Male Cone	15,000	1,034
33876-361	1" UNF Male	1/2" BSP M Male Cone	20,000	1,380



ADAPTORS

SPECIFICATIONS



HYDROJET THE WONDER TOOL

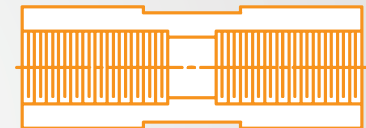
MALE LANCE ADAPTORS

PART NUMBER	CONNECTION 1	CONNECTION 2	MAX PRESSURE	
			PSI	BAR
33800-100	M7 Male	M7 Male	20,000	1,380
33800-101	1/8" BSP M Male	1/8" BSP M Male	20,000	1,380
33800-102	1/4" BSP M Male	1/4" BSP M Male	20,000	1,380
33800-103	M7 Male	1/8" BSP M Male	20,000	1,380
33800-104	1/4" BSP M Male	M7 Male	20,000	1,380
33800-105	1/8" BSP M Male	1/4" BSP M Male	20,000	1,380



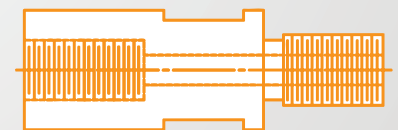
FEMALE TO FEMALE LANCE ADAPTORS

PART NUMBER	CONNECTION 1	CONNECTION 2	MAX PRESSURE	
			PSI	BAR
33801-106	M7 Female	M7 Female	20,000	1,380
33801-107	1/8" BSP F Female	1/8" BSP F Female	20,000	1,380
33801-108	1/4" BSP F Female	1/4" BSP F Female	20,000	1,380
33801-109	M7 Female	1/8" BSP F Female	20,000	1,380
33801-110	M7 Female	1/4" BSP F Female	20,000	1,380
33801-111	1/4" BSP F Female	1/8" BSP F Female	20,000	1,380



FEMALE TO MALE LANCE ADAPTORS

PART NUMBER	CONNECTION 1	CONNECTION 2	MAX PRESSURE	
			PSI	BAR
33802-112	1/8" BSP F Female	M7 Male	20,000	1,380
33802-113	1/4" BSP F Female	M7 Male	20,000	1,380
33802-114	M7 Female	1/8" BSP M Male	20,000	1,380
33802-115	1/4" BSP F Female	1/8" BSP M Male	20,000	1,380
33802-116	M7 Female	1/4" BSP M Male	20,000	1,380
33802-117	1/8" BSP F Female	1/4" BSP M Male	20,000	1,380
33802-118	M7 Female	M7 Male	20,000	1,380
33802-119	1/8" BSP F Female	1/8" BSP M Male	20,000	1,380
33802-120	1/4" BSP F Female	1/4" BSP M Male	20,000	1,380
33802-123	1/4" BSP F Female	3/8" BSP M Male	20,000	1,380
33802-124	1/4" BSP F Female	1/2" BSP M Male	20,000	1,380



FEMALE TO MALE LANCE ADAPTORS

PART NUMBER	CONNECTION 1	CONNECTION 2	MAX PRESSURE	
			PSI	BAR
7010	1/4" BSP F Female	1/2" BSP M Male Cone	20,000	1,380



UNLOADER & PRESSURE REGULATOR



HYDROJET THE WONDER TOOL

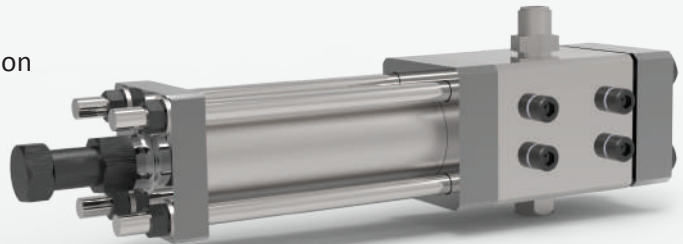
Our high-performance Unloader Valve is engineered for seamless pressure regulation in high-pressure jetting systems. Designed to automatically bypass excess flow when the gun is shut off, it ensures pump protection and consistent performance without pressure spikes.

AUTO BYPASS PRESSURE REGULATOR

A critical safety component, the Pressure regulator valve redirects water flow when the trigger is released, protecting the pump from overpressure buildup and damage.

FEATURES

- **Automatic pressure** bypass to dump/tank
- **Prevents pump overloading** during shutoff gun position
- **Stainless steel body** & internals for durability
- **Adjustable** pressure setting
- Discharge Flow upto **200 LPM**
- Supports up to **1,380 bar/ 20,000 psi** systems

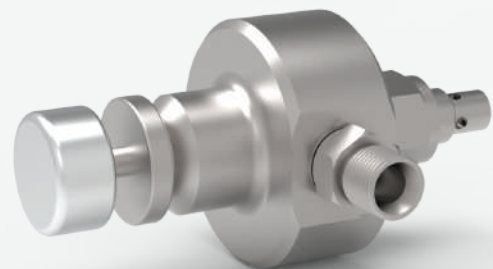


MANUAL PRV (PRESSURE REGULATOR VALVE)

A compact, high-performance valve with a manual regulating knob for precise pressure control. Designed for easy operation and fine-tuned adjustment, this PRV ensures optimal safety and performance across all jetting applications.

FEATURES

- **Manual twist knob** for accurate pressure regulation
- **Stainless steel body** and internals for long-term durability
- Compatible with **all Nutech Jetting high-pressure systems**
- Based on **Valve Cartridge design**
- For **quick 2 Min** on field maintenance
- Adjustable pressure setting up to **1,380 bar/ 20,000 psi**
- Discharge Flow capacity upto **80 LPM**



SAFETY VALVES



HYDROJET THE WONDER TOOL

A critical fail-safe component, the safety valve automatically releases excess pressure to protect the system from overloading or damage. Engineered for reliability, it ensures maximum safety in extreme working conditions.

Essential for plant safety and regulatory compliance in high-pressure operations

RUPTURE DISC SAFETY VALVE

A one-time-use, fail-safe device engineered for instant pressure relief. Once the disc ruptures at preset pressure, it ensures safe venting without delay.

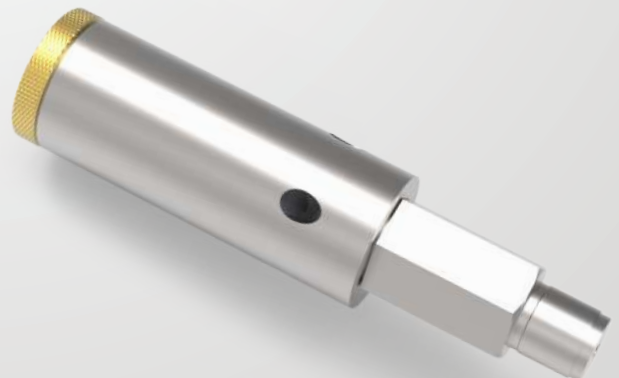
- **Non-resettable** overpressure protection
- Ruptures instantly at set pressure
- Solid **stainless steel** construction with precision disc
- Compact **form factor**
- Ideal for **fixed jetting setups and critical safety zones**
- Rated for pressure up to **1,380 bar/ 20,000 psi**



DISC SPRING SAFETY VALVE

A resettable, spring-loaded safety valve designed for continuous jetting operations. Ideal for systems requiring consistent protection with the ability to reuse after activation.

- **Spring-actuated** automatic pressure release
- **Reusable & adjustable** set pressure
- Durable **stainless steel** body & internals
- Compatible with **high-pressure pumps and systems**
- Rated for pressure up to **1,034 bar/ 15,000 psi**



DUMP VALVE CARTRIDGE



HYDROJET THE WONDER TOOL

DUMP VALVE CARTRIDGE

A critical wear component, the valve cartridge ensures reliable flow control in high-pressure jetting operations.

FEATURES

- Ensures reliable **flow** control in jetting operations
- **Quick-replaceable design** for easy maintenance and longer equipment life
- Compatible with **NFOV 20, NGUN 20, Manual PRV**
- Made from special **stainless steel** for extreme durability
- **Provides leak-proof sealing** and smooth, consistent operation
- **Ideal for fast servicing** and reducing system downtime
- Rated for pressure up to **1,380 bar/ 20,000 psi**

PART NUMBER	FLOW RANGE	PRESSURE RANGE
7006A	80 LPM	20,000 PSI
7006B	180 LPM	20,000 PSI

COMPATABLE WITH

- Foot Operative Valve - NFOV 20
- HP Dump Gun - NGUN 20
- Manual PRV- Pressure Regulator Valve



HP JETTING

SAFETY SUIT



HYDROJET THE WONDER TOOL

JET-GUARD 20K

Specially engineered to safeguard operators during high-pressure water jetting tasks, our safety suit offers robust protection without compromising comfort or flexibility.

FEATURES

- Pierce Protection from Jets upto **1,380 Bar/ 20,000 Psi**
- **UV resistant** with special anti-abrasion coating
- **Highly maneuverable** – ideal for confined spaces
- **Double-lock closure:** heavy-duty zip + steel buttons
- **Rear vents for airflow** without compromising safety
- **Drawstrings** at wrists, ankles, and hood for secure fit
- Certified for **ISO 13688:2013** safety standards by DNV, UK

APPLICATIONS

- Heat exchanger tube cleaning
- Pipe & tank descaling
- Paint removal & surface prep
- Industrial equipment maintenance
- Confined space jetting operations

Available in M / L / XL / XXL

FABRIC THICKNESS	PRESSURE PROTECTION	FABRIC GSM	TEAR STRENGTH	TENSILE STRENGTH
0.75 mm	Upto 20,000 psi	650 GSM	340 trapezoid/ N	550 N/cm



Helmet & Visor

Integrated helmet with impact-resistant, anti-fog visor for clear vision and facial protection.

Suit Upper

Double locking system and High Collars ensure no water enters the suit from front.

Twin Large Pockets

Enables operator to carry Spare Nozzle & small tools.

Legs & Boots Section

Comes with protective shoe cover. Protects the foot from direct jet impacts.



FOR MORE DETAILS VISIT
www.nutechjetting.com



NUTECH®

CONTACT US

+91 9810862162

+91 7838500405

sales.jetting@nutechgroup.org

HEAD OFFICE

5A/19A, Railway Road, NIT-5,
Faridabad-121001, Haryana

BRANCH OFFICE

Chimanbhai Godown, Angad Road,
Koyli, Vadodara - 391330, Gujarat

MANUFACTURING UNIT

M-9, K-7, 8/1, Sector - 59, Ballabhgarh,
Faridabad - 121004, Haryana



@NutechGroup



nutech
group