

# FLOWTEL ENGINEERING

Plot No. 44/45, Gali No.8, Badhkal Extension Near Sanik Colony Red Light

& B.N. Public School, Fridabad-121001

Mob.: +91-9313238440, 8447165770

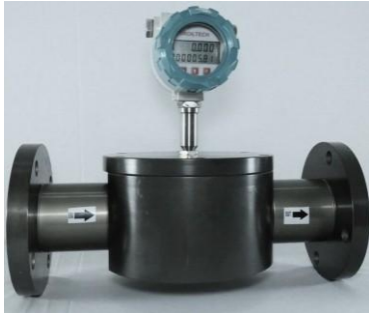
E-mail: sales@flowtel.in | Website: www.flowtel.in



## Oval Gear Flow Meter

(Positive Displacement Flow Sensor)

## FE-DFM



### Technical Data Sheet

Material of construction:

Enclosure : Aluminum anodize/S.S-304/S.S-316

Rotor : Aluminum anodize/S.S-316/PPS

O-ring : NBR/Viton

Shaft : Hard Stainless Steel-316

Accuracy (standard installation position) :  $\pm 1\%$  RS /0.15% FSD

Repeatability : 0.1%

Maximum working pressure : 5 MPa for aluminum body

: 25 MPa for s.s. body

: above 250 bar please contact company

Fluid & Ambient temperature: -40 to 80°C

Power voltage: Battery operated

Connection: Thread (M/F) or flange

#### 1) Pulse output sensor :

Power voltage: 12 V DC

Output signal: NPN open connector

Output:

high electric level : High than 8 VDC( input voltage 12 VDC)

low electric level : lower than 0.8 VDC( input voltage 12 VDC)

#### 2) Battery operated meter :

Power voltage: 3.3 V10AH lithium batteries can be used more than 5 years in a row.

display mode:

Double row Liquid Crystal Display (LCD), as follows:

L XXX. X four instantaneous flow (m<sup>3</sup> / h) or L/h

XX. XXXXXX eight cumulative flow (m<sup>3</sup>) or L

Cumulative flow: automatically expand the display precision, the cumulative flow values can be reset.

Power-fail protection: instrument coefficient, the Total flow values ten years is not lost when power supply drop.

#### 3) Display with 4 to 20 mA Output

Power voltage: 24 V DC Output signal: 4 TO 20 mA / RS485



# Oval Gear Flow Sensor

(positive displacement flow sensor)

## Technical Data Sheet

Fuel flow sensor model no wise Technical data: ^

Model no	Line size	Range
FE-DFM-03	4mm-- 1/4" Thread	0.05-30L/H
FE-DFM-04	4mm --1/4" Thread	0.2-60L/H
FE-DFM-06	6mm --1/4" Thread	5-150L/H
FE-DFM-08	8 mm--3/8" Thread	20-300L/H
FE-DFM-012	12 mm--1/2" Thread	50-1200L/H
FE-DFM-020	20 mm--3/4" Thread	150-2,000L/H
FE-DFM-025	25 mm--1" Thread	200-4,000L/H
FE-DFM-040	40 mm-- 1.5" Flange	500-10,000L/H
FE-DFM-050	50 mm-- 2" Flange	600-20,000L/H
FE-DFM-080	80 mm -- 3" Flange	1,000-50,000L/H
FE-DFM-0100	100 mm-- 4" Flange	2,000-100,000L/H
FE-DFM-0150	150 mm-- 4" Flange	5,000-150,000L/H

## FE-DFM



## Calibration process

- \*Calibrated each flow sensor with three pressure point : 0.5, 4 and 25 bar ,
- \*all pressure calculate pulse/litter at : 25%, 50%, 75% and 100% flow rate
- \*Calibrated with pure diesel

## Application:

Aluminum body and rotor : Flow measurements of kerosene, Gasoline, diesel, light oil, heavy oil  
 S.S. body and rotor : Flow measurements of Pharmaceutical drug, food oil, and all application

