

ANTI - VIBRATION MOUNTS

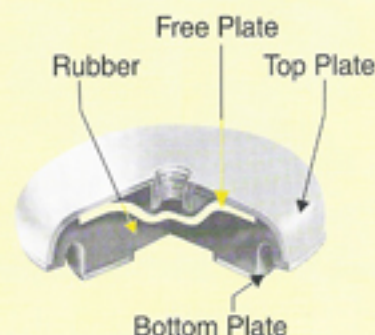
SALIENT FEATURES :

- Shock & Vibration Isolation
- In-built Leveling Device
- Requires No Foundation
- Offers Flexibility in Relocating Equipments
- Reduction in Maintenance Costs
- Reduction in noise
- Ensures long & Trouble-Free Operation of Equipments

DYNA MOUNT



CONSTRUCTION :

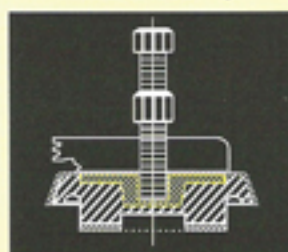


INSTALLATION INSTRUCTION :

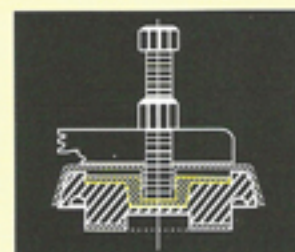
- Select the right mode of **DYNA-MOUNT** FOR OPTIMUM PERFORMANCE.
- Locate the **DYNA-MOUNT** below the foundation hole of the equipment. Insert the bolt through the foundation hole of the equipment in to the **DYNA-MOUNT**
- Initially tighten the bolt by hand and finally by a spanner. This will uplift the **DYNA-MOUNT** along with the equipment from ground level.

The increase in height helps in the final leveling of the equipment without the insertion of any extra seams below machine. After a final level is attained, tighten the check-nut along with washer to keep the level firm & final

Before Levelling



After Levelling



NOTE : Height of **DYNA-MOUNT** should not be increased more than 12 mm from the original height of **DYNA-MOUNT**

WORKING :

- Start the equipment on which the **DYNA - MOUNT** is fixed. Some of the shock waves & vibration generated by the same shall pass first through the top plate of the mount and onwards to the rubber which absorbs the waves & vibration.
- The other waves / vibration shall pass on through the bolt to the free plate floating on rubber within the **DYNA - MOUNT** which absorbs the shocks & vibrations thereby terminating their onward travel to the floor. This without doubt improves greatly the efficiency of the equipment mounted on our **DYNA - MOUNT**

APPLICATIONS :

- Group A:** Generators, Compressors, Centrifugal Pumps, Chilling Plants, MCC & Control Panels etc.
- Group B:** Metal Cutting machines, Power Press, Milling, Grinders, Jigs, Gear Hobbers, Shearing machines, Press Break, Notching Machines
- Group C:** Pharma Machines like Tabletting, Coating, Pulverising.
- Group D:** Textile Machinery like Ring Frames.
- Group E:** Plastic machines like Injection & Blow Moulding, Extrusion etc.

TABLE :

Model	Diameter in mm	Height in mm	Bolt Size		Recommended Gross Weight of Machine
			in mm	in Inches	
DC-20	80	38	12.5	1 / 2 "	150 To 300Kgs.
DC-30	120	38	12.5	1 / 2 "	300 To 700Kgs.
DC-65	160	41	16.00	5 / 8 "	700 To 1000 Kgs.
DC-82	160	41	16.00	5 / 8 "	1000Kgs. & above

ANTI - VIBRATION MOUNTS

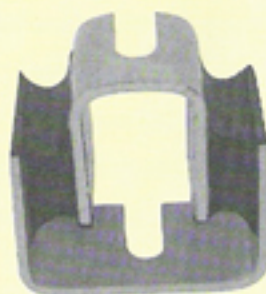
SALIENT FEATURES :

- Shock & Vibration Isolation, from Outside for Precision Machinery.
- Requires No Foundation
- Quick & easy Installation
- Offer Flexibility in Relocating Equipments.
- Reduction in Maintenance Costs thereby increase in Life of Equipment
- Ensures long & Trouble-Free Operation of Equipments.

APPLICATIONS :

Sensitive Instruments, Electrical Electronic Panels, Small Fans & Blowers, Small Pumps, Electronic Apparatus etc.

VIBRA MOUNT



Models	Hight in mm	Width in mm	Recommended Gross Weight of Machine
VM - 101	43	60	Upto 10 kgs
VM - 103	67	70	Upto 50 kgs
VM - 105	78	80	Upto 200 kgs

ROLLER MOUNT-INSTRAMOUNT

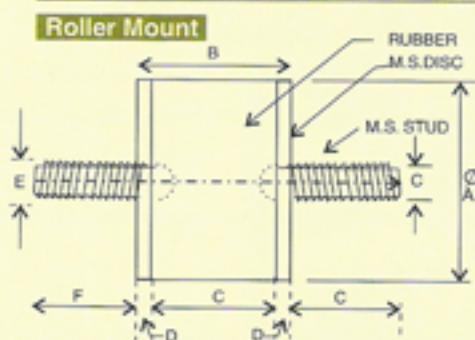
SALIENT FEATURES:

- Protects sensitive equipment from shock & Vibration
- Minimum Decibel Level
- Can be Installed in Shear or compression
- Innovative bonding process ensures positive adhesion between metal & rubber elements in the mount there by making is virtually trouble maintenance free.

Roller Mount



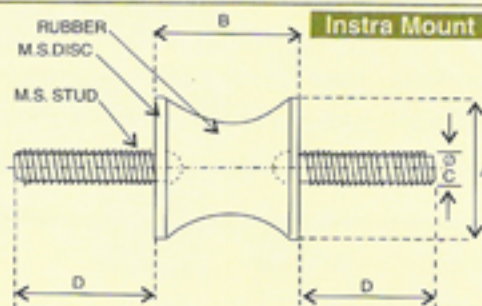
Instra Mount



Roller Mount

Sizes dia	Model RM-1	Model RM-5	Model RM-7
A	50	60	100
B	36	36	62
C	29	30	50
D	3	3	6
E	10	12	16
F	25	65	75
G	25	65	37

All Dimensions are in mm



Instra Mount

Size	A	B	C	D
Big	35	34	M8	40
Small	20	20	M8 or M6	20

CONSTRUCTION :

These mounts are made of two metals discs moulded with rubber and having a stud on either side at the center of each metal disc.

APPLICATIONS :

Electrical Electronic Equipments like, Motors, relays, Panels, Fans, blowers, Timing Devices A/c equipments, Engine Generators etc, small equipments, small pumps.

ANTI - VIBRATION MOUNTS

ISO MOUNT

SALIENT FEATURES :

- Absorbs Shocks & Vibration
- Easy and precise installation
- No Cementing and / or grouting required.
- Reduction in Decibel Level
- Free from External Vibration on installed machine
- Robust Construction ensures protection from oil & physical damage.
- Safety recommended for Mobile Units like Trains, Vans, Trucks, Wagons etc.



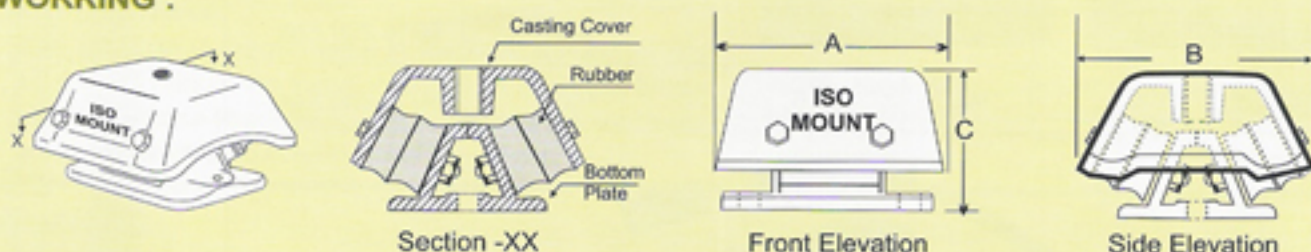
CONSTRUCTION :

The **ISO MOUNT** is made up of a casting cover and bottom plate with a pair of rubber - to - metal bonded flexible units within which are at an angular position. The bottom plate has two hole laterally to enable fix the same on the floor or structure and the cover plate has a threaded hole to mount the equipment

The Bottom Plate : Has a hole on either side to fix the **ISO MOUNT** on channel, floor etc if at all required.

Note : Because the bottom plate has a hole on either side the **ISO MOUNT** can be very useful for the installation of heavy equipment in mobile units like van-wagons, Steamer, Air Crafts etc. .

WORKING :



When machine is placed on **ISO MOUNT**, the rubber to metal bonded rectangular inserts are loaded in compression & shear. A combination which gives the longest life with the best load / deflection characteristics. **ISO MOUNT** is designed in such a manner that rubber is protected from oil & physical damages by robust casting. Bottom friction pads can be provided to avoid conventional foundation on floor

APPLICATIONS :

Generating sets , Pump sets Blowers , Compressors
Grinding Machines, Pharmaceutical Machines



Single Stud Mount



Sandwich Mount

TABLE :

Model		I M - 60	I M - 100
Length in mm :	A	120	230
Width in mm :	B	124	204
Height in mm :	C	80	110
Recemended Gross Weight of machine		upto 700 kgs.	700 kgs & above

ANTI - VIBRATION MOUNTS

LEVEL MOUNT



SALIENT FEATURES :

- Fast, easy and precise levelling
- No cementing or grouting required
- Enables stud tilt angle of 60 degree on either side, (refer view)
- Electrically no-conductive because of rubber base.

CONSTRUCTION:

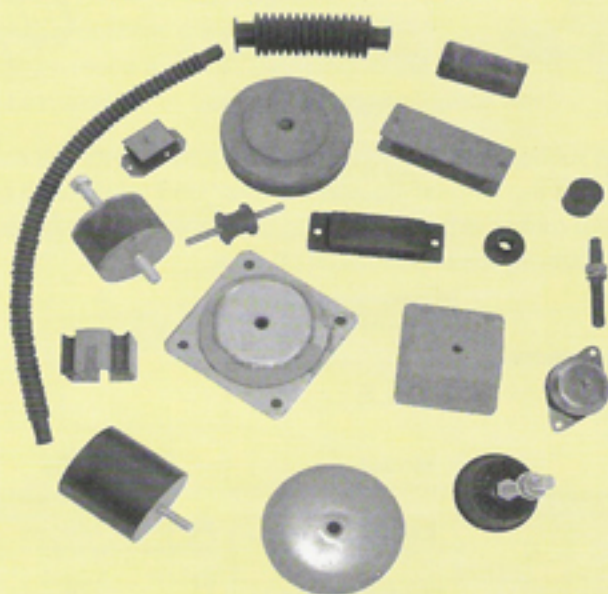
The LEVEL MOUNT consist of a rubber base with a threaded stud which can tilt upto 60 degrees on either side,. Provides an excellent grip on any surface which, enables a safe & dependable installation.

APPLICATIONS :

Electronic, Materials Handling & Medical Equipment, Packaging Machinery, Conveyors. Vibratory Feeders, Food, dairy and Drug Processing Equipments.

TABLE :

Model	Rubber Base Dia in mm	Hight in mm	Threaded Stud dia in mm	Threaded Stud Length in mm	Gross Weight of Machine
LM-80	80	40	16	150	50 to 200 Kgs
LM-100	100	40	16	150	50 to 250 Kgs



DYNAMICS CORPORATION

40, Veer Nariman Road, 3/A Hashim Building, 1st Floor, Fort, Mumbai 4000 023

Telephone : (91-22) 2287 1429 - 30
e-mail : dynamics@bom5.vsnl.net.in

Fax: (91-22) 2287 1428
Web Site : www.dynacorpindia.com

DYNAMICS CORPORATION

40, Veer Nariman Road, 3/A Hashim Building, 1st Floor, Fort, Mumbai 4000 023.
Telephone : 2287 1429 - 30 (FAX) 2287 1428 • Web Site : www.dynacorpindia.com