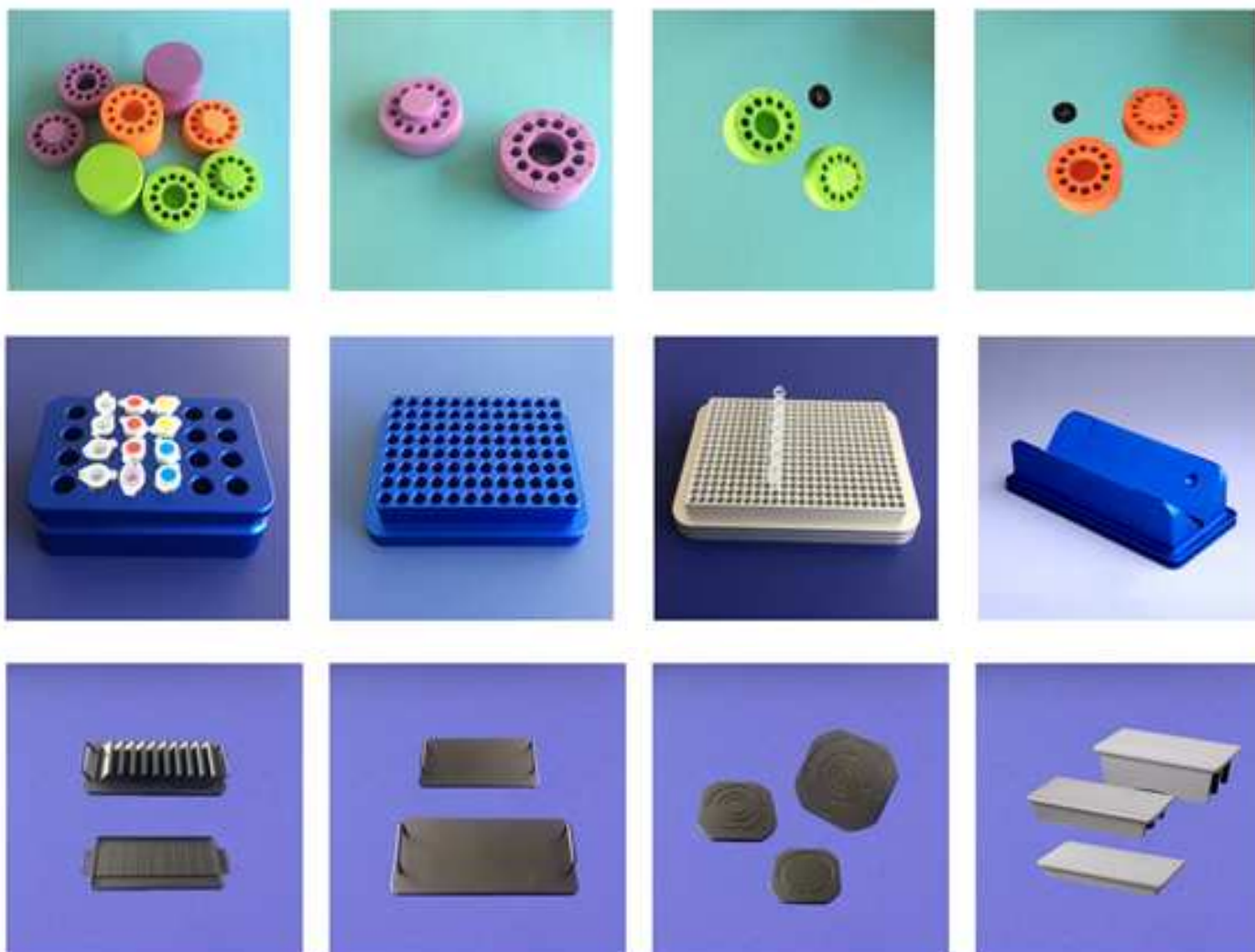


# Kunshan Goldspread Plastic Technologies Co., Ltd.

## Cell Cryopreservation Products



### Kunshan Goldspread Plastic Technologies Co., Ltd.

Address :No.715,JinCheng Road, Bacheng Town, Kunshan, Jiangsu, China

Mobile: + 86-137-7609-7130 ; +86-180-5129-9029

Email: [info@goldspreadlab.com](mailto:info@goldspreadlab.com)  
[sales@goldspreadlab.com](mailto:sales@goldspreadlab.com)  
[goldspread@163.com](mailto:goldspread@163.com)

Website:  
[www.goldspreadlab.com](http://www.goldspreadlab.com)



# Cell Cryopreservation Product

## CellRooms



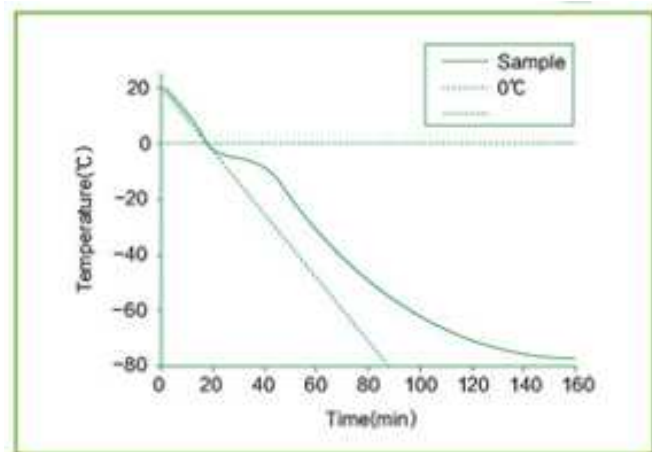
**CellRooms** are thermo-conductive micro-tube racks or cell freezing containers, which ensure standardized controlled-rate  $-1^{\circ}\text{C}/\text{minute}$  cell freezing in cryogenic refrigerator without alcohol or any fluids. CellRoom is applied to variety of cell types which includes stem cells, primary cells and cell lines. CellRoom is very convenient to use, do not need to add any liquid, you just need to insert the samples in CellRoom, then put CellRoom in  $-80^{\circ}\text{C}$  freezer. It has been proved that CellRoom can improve the user's efficiency a lot. And CellRoom is harmless to environment or human body.

### Product features:

- ◆ It is very convenient to use, do not need to add any liquid, you just need to insert your samples in CellRoom directly then put the CellRoom in  $-80^{\circ}\text{C}$  freezer.
- ◆ Do not need to change anything, and it is durable.
- ◆ No pollution, solid core and insulation design, no pre-cooling required
- ◆ Every experiment is consistent cooling rate, all holes cooling rate are the same
- ◆ It is easy to open CellRoom, you can take the CellRoom out of the freezer by hand and all your fingers will not get frostbite
- ◆ It is easy to transfer all samples, do not need to transfer one by one
- ◆ Ready to use again in 5 minutes.
- ◆ It is high survival rate after cell recovery
- ◆ Low impact on temperature around the freezer.



### CellRoom freezing performance



### How to Use CellRoom:

- ◆ Put the samples in CellRoom first, then cover the CellRoom lid and put CellRoom in  $-80^{\circ}\text{C}$  freezer for at least 3 hours without opening CellRoom during this period. Take it out and you can transfer samples into dry ice or liquid nitrogen environment.
- ◆ If CellRoom needs to be continuously used, you have to open CellRoom lid and make it recover to normal temperature.

# Cell Cryopreservation Product



## Thermo Conductive Micro Tube Racks & Cell Freezing Container

### CellRoom

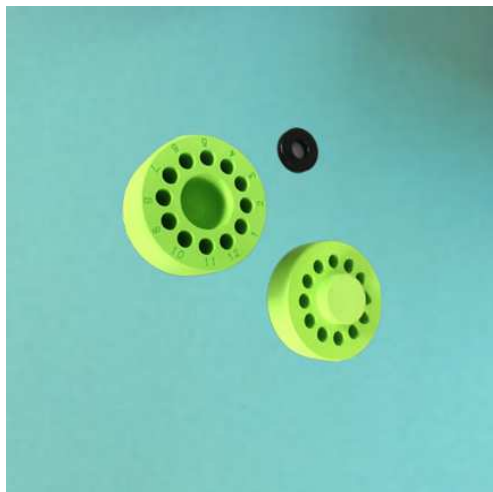


**Item:** GSEVACR12O

**Spec:**

**CellRoom**—thermo conductive micro tube racks & cell freezing container, 12-well, Size:  $\Phi 117$  \*(40+59), Color: orange

Suitable for 12\*1 ml or 12\* 2 ml cryogenic vials



**Item:** GSEVACR12G

**Spec:**

**CellRoom**—thermo conductive micro tube racks & cell freezing container, 12-well, Size:  $\Phi 117$  \*(40+59), Color: green

Suitable for 12\*1 ml or 12\* 2 ml cryogenic vials



**Item:** GSEVACR12P

**Spec:**

**CellRoom**—thermo conductive micro tube racks & cell freezing container, 12-well, Size:  $\Phi 117$  \*(40+59), Color; Purple

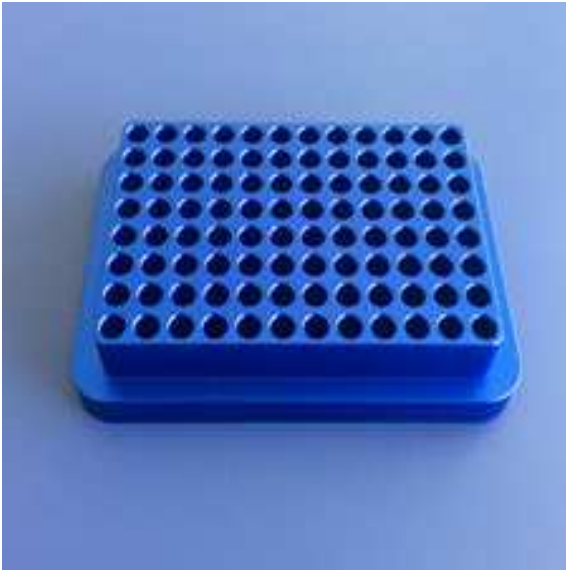
Suitable for 12\*1 ml or 12\* 2 ml cryogenic vials

# Cell Cryopreservation Product



## Tube Storage Rack

### Cool Rack for PCR Plate



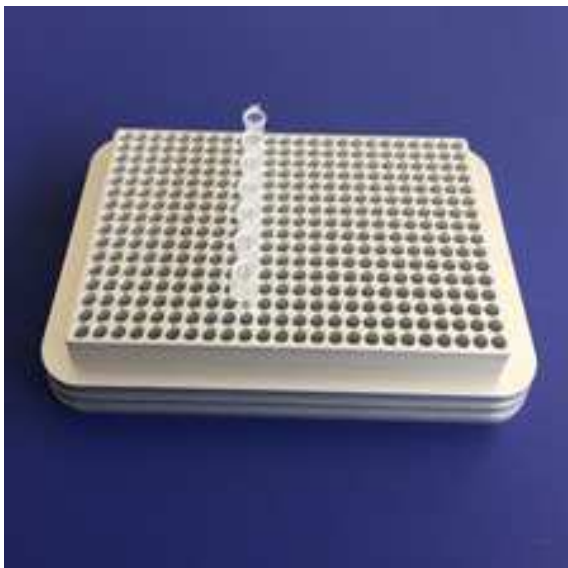
**Item:** GSCRPCR96

#### **Spec:**

##### **CoolRack PCR96**

96-well, dim: 127 x 86 x 25.6 mm, max well dia:6.4 mm, well depth:13.0mm,well shape: V-shape

For One 96-well PCR plate, strip wells, 0.2mL tubes



**Item:** GSCRPCR384

#### **Spec:**

##### **CoolRack PCR384**

384-well, dim: 127 x 86 x 18 mm, max well dia:3.8 mm, well depth:7.1mm, well shape:

For One 384-well PCR plate

# Cell Cryopreservation Product



## Test Tube Storage Rack

### Cool Rack for 15,50,250ml Centrifuge Tube



**Item:** GSCRCT15

#### **Spec:**

**15 ml Centrifuge Tube Rack**

9-well, Dim: 89 x 89 x 107 mm, well dia:17.1mm  
well depth:102mm, well shape: U-shape

For 15 ml centrifuge tube



**Item:** GSCRCT50

#### **Spec:**

**50 ml Centrifuge Tube Rack**

4-well, Dim: 89 x 89 x 107 mm, well dia:29.6mm  
well depth:102mm, well shape: U-shape

For 50 ml centrifuge tube



**Item:** GSCRCT50

#### **Spec:**

**250 ml Centrifuge Tube Rack**

1-well, Dim: 89 x 89 x 140 mm, well dia:60.4mm  
well depth:133.3mm, well shape: V-shape

For 250 ml centrifuge tube

# Cell Cryopreservation Product



## Test Tube Storage Rack

### Cool Rack for Microfuge Tubes



**Item:** GSCRXTM24

#### **Spec:**

**Microfuge tube rack**

24-well, Dim: 128 x 85 x 38 mm, well dia:11.1mm  
well depth:34.7mm,well shape :U-shape

For 1.5 mL Or 2.0 mL microfuge tubes



**Item:** GSCRM40

#### **Spec:**

**Microfuge Tube Rack**

40-well, Dim: 140 x 93 x 25 mm, well dia:10.5mm  
well depth:21 mm,well shape :U-shape

For 1.5 mL Or 2.0 mL microfuge tubes

# Cell Cryopreservation Product



## Test Tube Storage Rack

### Cool Rack for Cryogenic Vial or FACS Tube



**Item:** GSCRCF19

#### **Spec:**

##### **Cryogenic Vial Rack**

19-well, dia 100\*35mm well dia:12.4mm,well depth:25.2mm, well shape : U-shape

For cryogenic vial or FACS tube



**Item:** GSCRCF35

#### **Spec:**

##### **Cryogenic Vial Rack**

35-well, dim 130\*100\*35mm, well dia:12.8mm,well depth:27mm, well shape : U-shape

For cryogenic vial or FACS tube

# Cell Cryopreservation Product



## Test Tube Storage Rack

### Cool Rack for Mixed Tube



**Item:** GSCRM8C15

### **Spec:**

#### **Microfuge & Centrifuge Tube Rack**

Dim: 130 x 84.5 x 65 mm, well dia: 8 \* $\Phi$ 11.1mm /15 \* $\Phi$ 16.8mm, well depth: 8 \* $\Phi$ 23.1mm /15 \* $\Phi$ 55.2mm, well shape :U-shape

For 8-well 1.5 mL Or 2.0 mL microfuge tubes and 15-well 15ml centrifuge tube



**Item:** GSCRM25PCR32

### **Spec:**

#### **Microfuge & PCR Tube Rack**

Dim: 160 x 90 x 25 mm, well dia: 25 \* $\Phi$ 10.2mm /32 \* $\Phi$ 6mm, well depth: 25 \* $\Phi$ 21.5mm /32 \* $\Phi$ 13.1mm, well shape :U-shape

For 25-well 1.5 ml or 2.0 ml microfuge tubes and 4\*8 strip -well PCR tubes



# Cell Cryopreservation Product



## Test Tube Storage Rack

### Cool Rack Injectable Cell Therapy Ampules



**Item:** GSCRSV2

#### **Spec:**

**2 ml Injectable Cell Therapy Ampule Rack**

Dim: 127 x 86 x 38 mm, well dia: 16mm , well depth: 24mm,well shape :U-shape

For 2 ml Injectable Cell Therapy Ampules



**Item:** GSCRSV10

#### **Spec:**

**10 ml Injectable Cell Therapy Ampule Rack**

Dim: 127 x 86 x 38 mm, well dia: 23.6mm , well depth: 27.9mm,well shape :U-shape

For 10 ml Injectable Cell Therapy Ampules

# Cell Cryopreservation Product



## Test Tube Storage Rack

### Cool Rack for Blood Collection Tube



**Item:** GSCRV13

**Spec:**

**13x75 mm Blood Tube Rack**

9-well,dim: 89 x 89 x 61 mm, well dia: 13.4mm ,  
well depth: 59mm,well shape :U-shape

For 13x75 mm blood collection tube



**Item:** GSCRVS13

**Spec:**

**13x100 mm Blood Tube Rack**

9-well ,dim: 89 x 89 x 84 mm, well dia: 13.4mm ,  
well depth: 82 mm,well shape :U-shape

For 13x100 mm blood collection tube or 5 ml  
cryogenic vials



**Item:** GSCRV16

**Spec:**

**16x100 mm Blood Tube Rack**

9-well, dim: 89 x 89 x 84 mm, well dia: 16.4mm ,  
well depth: 82 mm,well shape :U-shape

For 16x100 mm blood collection tube or 5 ml  
cryogenic vials

# Cell Cryopreservation Product



## Thermo-Conductive Plate and Reservoir Modules

### Cool Sink



**Item:** GSCSXT96F

**Spec:**

**CoolSink XT96F**

For one 6-, 12-, 24-, 48-, 96- or 384-well flat bottom plate

Dim: L128 x W86x H17mm



**Item:** GSCSXT96U

**Spec:**

**CoolSink XT96U**

For one 96-well u-bottom plate

Dim: L128 x W86x H17mm



**Item:** GSCSLX55

**Spec:**

**CoolSink LX55**

For 55 mL reagent reservoirs

Dim: L146 x W64x H35mm

# Cell Cryopreservation Product



## Tissue and Slide Preparation Platforms

### Cool Sink H

**CoolSink H** thermo-conductive histology platforms standardize your tissue or specimen collection and preparation. Modules rapidly adapt to the source temperature when placed on ice, dry ice, liquid nitrogen, water bath or other temperature sources. Samples stay at uniform temperature while resting securely on a solid, stable platform. Ideal for animal and human sample preparation, biopsies, immunohistochemistry (IHC) and tissue or cell freezing. With handles removed, all thermo-conductive modules may be autoclaved, high heat sterilized or decontaminated with bleach, alcohol or other disinfectants or lab detergents.

### Thermo-conductive platform for culture dishes(HCDS/HCDM/HCDB)



#### Feature:

1. Material: High Quality Al Alloy
2. Size: Small, Medium, Big
3. Color :Black



#### Item

#### Spec

GSCSHCDS	CoolSink HCDS Small size, For 100mm culture dishes with lid Dim: L 114 x W 114 x H 9 mm
GSCSHCDM	CoolSink HCDM Medium size, For 35, 60, 100mm culture dishes Dim: L 114 x W 114 x H 9 mm
GSCSHCDB	CoolSink HCDB Big size, For 35, 60, 100, 150mm culture dishes Dim: L 160 x W 160 x H 10 mm

# Cell Cryopreservation Product



## Tissue and Slide Preparation Platforms

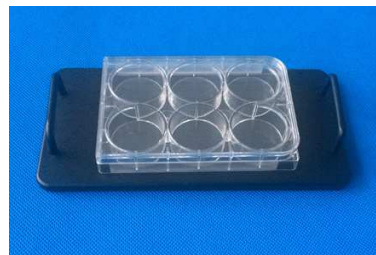
### Cool Sink H

Thermo-conductive platform for histological preparations(H/HL)



#### Feature:

1. Material: High Quality Al Alloy
2. Size: Small, Big
3. Color :Black



#### Item

GSCSH

GSCSHL

#### Spec

CooSink H Small Size Dim: L203\*W102\*10mm

CooSink HL Big Size Dim: L279\*W203\*10mm

Thermo-conductive platforms for slide preparation and sorting(HST/HS)



#### Feature:

1. Material: High Quality Al Alloy
2. Type: Vertical slide sorter ,Flat slide sorter
3. Color :Black



#### Item

GSCSHST

GSCSHS

#### Spec

CooSink HST Vertical slide sorter Dim: L216\*W89\*34mm

CooSink HS Flat side sorter Dim: L324\*W140\*13mm

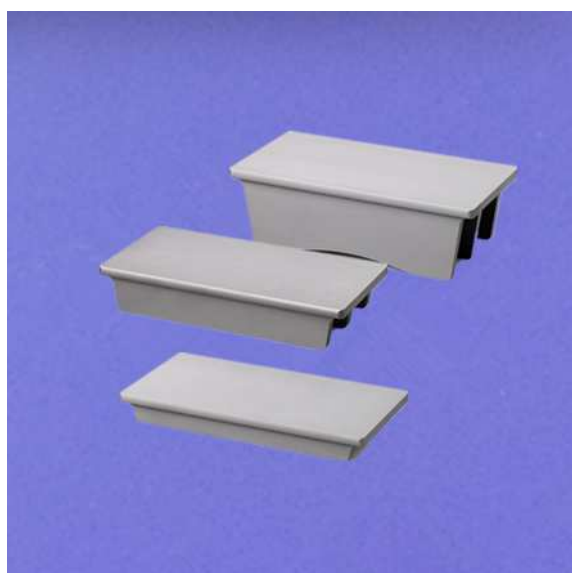
# Cell Cryopreservation Product



## Thermo Conductive Platforms

### Thermal Tray

**ThermalTray** thermo-conductive platforms support CoolRack and CoolSink sample modules in liquid temperature sources such as melting ice, water baths and liquid nitrogen. Made of the same highly conductive alloy as CoolRack and CoolSink modules, ThermalTray conducts the source temperature to the CoolRack or CoolSink and ultimately to your sample. The stable, sturdy design makes them ideal for processing temperature-sensitive samples. All modules may be autoclaved, high heat sterilized or decontaminated with bleach, alcohol or other disinfectants or lab detergents. All modules may be used in all temperature sources.



#### Item

GSTTS142832

GSTTM142851

GSTTB142886

#### Spec

ThermalTray  
Small size, low-profile for liquid nitrogen  
Dim: W 14 x L 28 x H 3.2 cm

ThermalTray  
Medium size, medium-profile for ice  
Dim:W 14 x L 28 x H 5.1 cm.

ThermalTray  
Big size, high-profile for water bath  
Dim:W 14 x L 28 x H 8.6 cm