



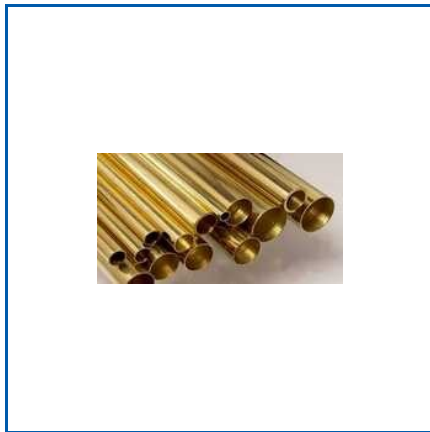
WE ARE MANUFACTURER, SUPPLIER, TRADER

Stainless Steel Pipe

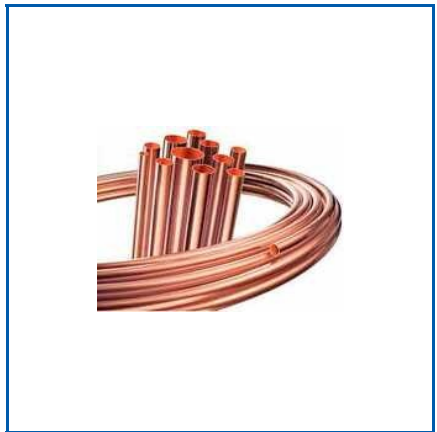
Brass Bar Brass Rod, Brass Tubes, Capsule Hole SS Perforated Sheet, Copper Tubes, Round Bars, Round Hole Perforated Sheet, SS Buttweld Fittings, SS Coil, SS Perforated Sheet, Sheet Plate, Socket Weld Fittings, Stainless Steel Angle, Stainless Steel Channels, Stainless Steel Ferrule Fittings, Stainless Steel Flanges, etc.



BRASS BAR BRASS ROD



BRASS TUBES



COPPER TUBES

About Us

Rajeshwar Metal and Engineering Private Limited is a reputable Manufacturer, Supplier and Trader of high-performance non-ferrous and industrial metal products. Our basic product line incorporates Brass Rods, Brass Tubes, Copper Tubes, Ferrule Fittings, Capsule Hole SS Perforated Sheets, a variety of allied products which find varied engineering and industrial applications. Having an excellent basis established on technical expertise and experience in the market, we have specialized in providing products of extremely accurate dimensional, mechanical, and finish demands.

We are a customer focused and quality oriented organization where all our products are symbolic of reliability, durability and consistency. Our clients have a team of experienced professionals who will collaborate with them in order to get to know their technical requirements and offer appropriate material solutions. We provide timely and safe deliveries with the help of reliable sourcing, new handling methods, and effective logistics.

Rajeshwar Metal and Engineering P. Limited has gained recognition throughout the years that it is an integrity, transparent and performing company. We have also maintained long-term relationships with various industries in which we have invested in quality and this has enabled us to dominate the manufacturing, construction, plumbing, electrical and engineering industries.

Key Facts

No of Staff	5
Year of Establishment	2023
OEM Service Provided	No

Our Products



Socket Weld Fittings



SS Buttweld Fittings



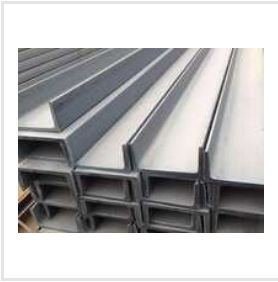
Copper Tubes



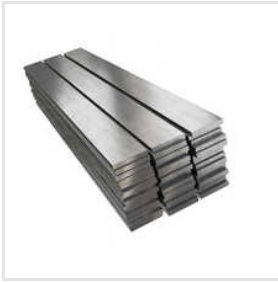
Stainless Steel Ferrule Fittings



Stainless Steel Flanges



Stainless Steel Channels



Stainless Steel Flat Bar



Stainless Steel Strip



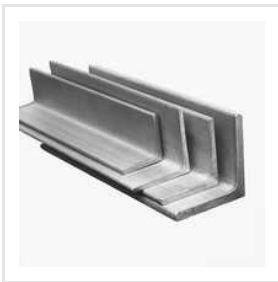
Sheet Plate



Stainless Steel Welding Filler Wire



SS Coil



Stainless Steel Angle



SS Perforated Sheet



Round Hole Perforated Sheet



Capsule Hole SS Perforated Sheet



Round Bars

ADDRESS



Office No 9, Plot No 99, First Floor,
Pansare House 4th,
Kumbharwada Mumbai,
Maharashtra, India (400004).

EMAIL



asianmetal.engg@yahoo.com

MOBILE



+919594596282

WEBSITE



www.rajeshwarmetalengg.in

KEY PERSONNEL
H.D. PATEL
(MARKETING MANAGER)