



**ASHWIN  
ENGINEERS**



**Pioneering  
Excellence In  
Roto Moulding  
Worldwide**

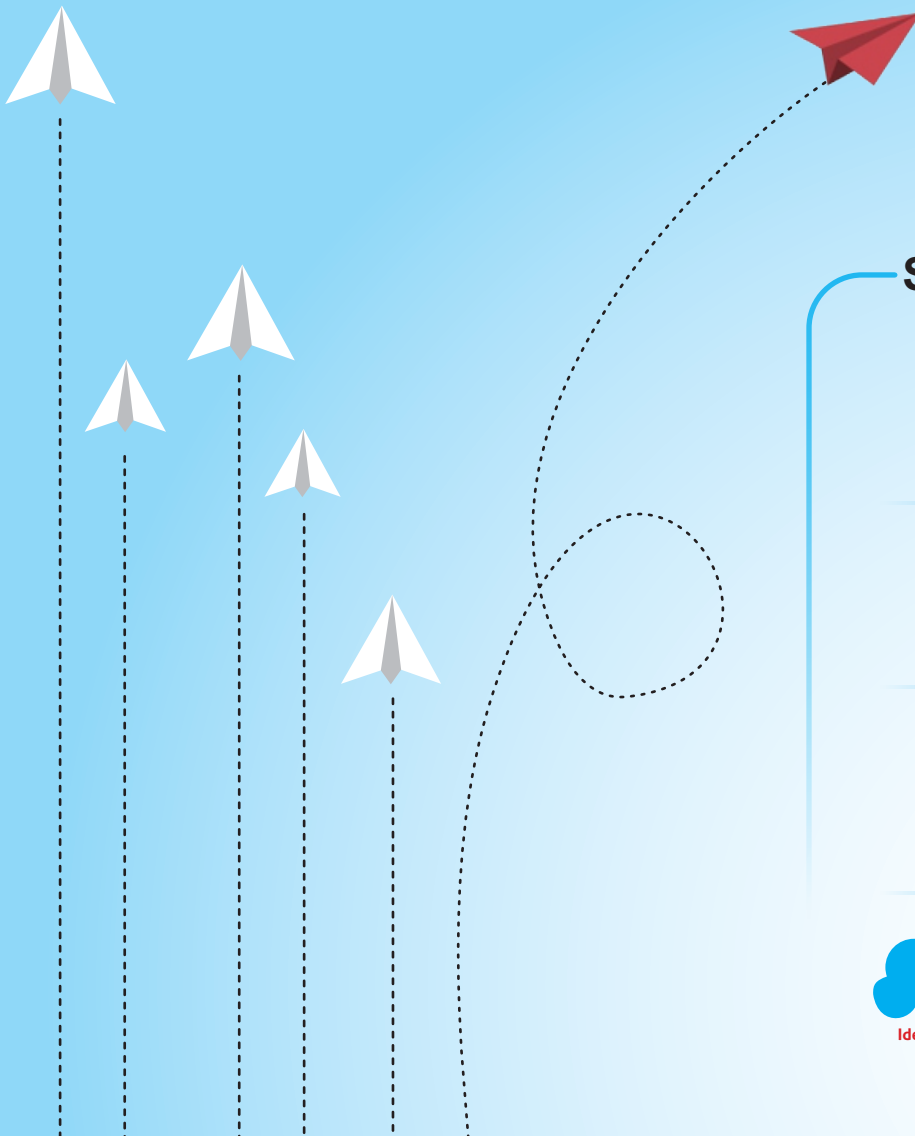


## About Us

ASH WIN Engineers, founded in 1992 in Ahmedabad, India, specializes in manufacturing and exporting cutting-edge Roto moulding machines, tailored rotational moulds, and essential machinery for Roto moulding projects. Our visionary engineers, backed by robust technical expertise and extensive industry experience, lead our company.

Based in Naroda, Ahmedabad, our 30,000-square-foot facility is well-equipped and organized, boasting advanced manufacturing capabilities. Strategically located near Ahmedabad Airport and Mumbai, our site offers international connectivity. Ahmedabad's airport provides direct flights to major cities worldwide, and Mundra Sea Port, just 350 kilometers away, adds convenience for our global clientele.

ASH WIN Engineers is dedicated to innovation, precision, and excellence in the Roto moulding industry. We strive to provide world-class solutions, empowering manufacturers globally with the technology and expertise to achieve their Roto moulding goals.



### Strategic Divisions



**SCO-PE**

The Perfect Roto Feed



**ROTO GARAGE**

The Retrofitting Team



**IN-SPARE**

Your Own Spare Store



**Aakaash  
Speciality Mouldings**

Ideas Galore



### **Mission**

Committed to innovation and excellence in Roto moulding, empowering global manufacturers with top-notch solutions.

### **Vision**

“To revolutionize the Roto moulding Industry through continuous innovation, expert craftsmanship, and unwavering commitment to customer satisfaction. Our visionary team of experienced designers, technicians, and skilled workers, led by dedicated technocrats, endeavours to set new standards by consistently enhancing our products and services. We aim to be the industry's leading one-stop solution provider, offering all Roto Moulding Machines, Ancillaries, spare parts, raw materials, Speciality Mouldings, and project consultancy. Our ultimate goal is to offer turnkey capabilities for Roto moulding projects of all complexities, ensuring excellence in every aspect.”



## Reliability and Customer Satisfaction



We boast a strong track record of reliability and customer satisfaction, consistently achieving a robust growth rate of 25 to 30%. Our commitment to clients ensures their unwavering trust, reflected in our high volume of repeat business, comprising 40 to 50% of our total.

## Comprehensive Customer Support

Beyond standard service, we provide comprehensive support for roto moulding projects, including expert guidance on factory setup, machinery, materials, and project execution. Our team of skilled professionals ensures clients have everything needed for project success.



## Credibility and Market Presence



We're recognized as an organized engineering group with a strong market presence, earned through unwavering commitment to quality and customer satisfaction.

## Diverse Product Range

Our range of state-of-the-art roto moulding machines caters precisely to client needs, offering quality while being budget-friendly. These models enjoy popularity not only in India but also internationally, showcasing our product excellence.



## Conclusion



Our dedication to reliability, customer satisfaction, and product excellence has positioned us as a trusted player in the market. We're committed to continually exceeding customer expectations globally.

## ASH WIN's Global Footprint

ASH WIN is a technology-driven company with a strong presence in the domestic market, known for its credibility, product quality, increased fuel efficiency, sophistication, and automation tailored to customer requirements. The company's unwavering tradition of customer support has become its hallmark, enabling it to compete with well-established players in the global market.

With its proven track record, ASH WIN has successfully expanded its export reach to more than 55 countries worldwide. This impressive growth has continued since the company's first supply and execution of a complete Roto moulding project in Nigeria. From that point onward, ASH WIN has never looked back, garnering a loyal and satisfied customer base across the globe.

One notable achievement for ASH WIN is the design, manufacture, and sale of CE-compliant machines to countries such as Germany and Denmark. This represents a significant breakthrough, as ASH WIN supplies to the very source of such machines. Additionally, ASH WIN machines are widely distributed in various regions, including East Africa (Ethiopia, Kenya), West Africa (Lagos, Kano, Ghana, Egypt), the Gulf countries (Kuwait, Qatar, Riyadh, UAE, Jordan, Yemen), and closer to home (Bangladesh, Sri Lanka). ASH WIN's presence also extends to countries like Australia, Cyprus, Germany, and Denmark, with an ever-growing list of pending orders.

ASH WIN's Excellence in Executing Turnkey Projects of Roto moulding has created a global footprint spanning more than 55 countries, including:

Denmark	Germany	Australia	Cyprus	Riyadh	Algeria
Jeddah	Ghana	Jordan	Yemen	Oman	Senegal
Dubai	Abu Dhabi	Kenya	Nigeria	Fiji	Gambia
Tanzania	Egypt	Congo	South Africa	Angola	Gabon
Bangladesh	Sri Lanka	Malawi	Sudan	Iran	
Zambia	Burundi	Uganda	Turkey	Iraq	

ASH WIN's commitment to excellence and its global presence continue to drive its success in the world of Roto moulding projects.



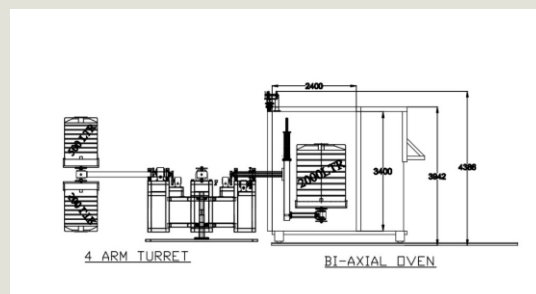
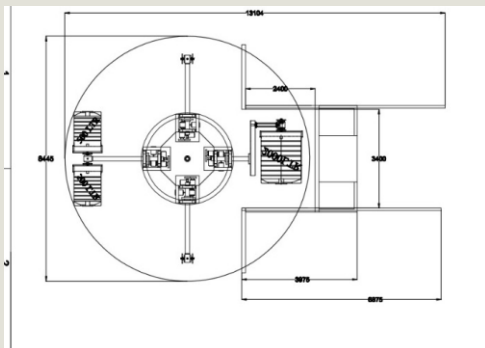


## Product Range

- ◆ Complete range of Rotomolding machines and All types of Rotomoulds.
- ◆ Independent FOUR arm Biaxial machines.
- ◆ Multi station Shuttle Rotomolding machines.
- ◆ Rock N Roll Rotomolding machines.
- ◆ Close Oven Rock-N-Roll Roto Molding machine
- ◆ Single Station BI-Axial Rotomoulding machine
- ◆ Rotational Moulds.
- ◆ Microfine Pulverising system.
- ◆ Extrusion lines for Colouring, reprocessing Granules.
- ◆ High speed Mixer
- ◆ Solid Granulators
- ◆ Agglomerator
- ◆ Screen Vibro.
- ◆ Encillieri Equipments & Optional items

Over the long tenure of more than 20 years, ASH WIN has been evolved as a reputed and reliable company to set up complete Roto molding project at any place around the world. It has been emerged as a solution provider and not only just machinery & Moulds supplier company

# Independent Four Arm Bi Axial Machines

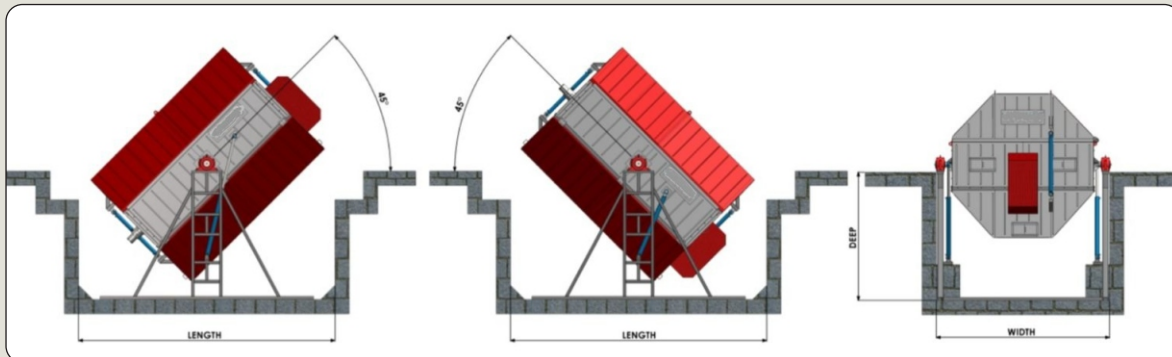


## Technical Specification

Particular	Unit	AEBI-ID-3000	AEBI-ID-5000	AEBI-ID-10000
Oven chamber size	Mtr	3.4x2.2x3.4	3.7 x 2.9 x 3.7	4.8x4x4.8
Fuel Type		Diesel / Gas	Diesel / Gas	Diesel / Gas
Swing Dia Straight Arm	Mm	3200/475/2200	3400/475/2700	4400/475/3700
Swing Dia Offset Arm	Mm	1900/400/1700	2000/400/2100	2900/400/2900
Electrical Load	HP	26	40	60
Floor Spare in LxWxH	Mtr	20x14x5	22x15x5	27x18x6



# Closed oven Rock-N-Roll Roto Moulding Machine



## Technical Specification

Model	AEBR-2000	AEBR-5000	AEBR-10000	AEBR-20000
Rolling Motor	3 HP	3 HP	5 HP	7.5 HP
Rocking Motor	3 HP	3 HP	5 HP	15 HP
Type of Fuel	Gas	Gas	Gas	Gas
Total Load	6 HP	6 HP	10 HP	22.5 HP

# Single Station BI - AXIAL Roto Moulding Machine



**Technical Specification  
Machine-1000x2**

Machine Size	Length : 6.0mtr
	Width : 3.5 Mtr
	Height : 4.0 Mtr
Minimum Shed Dimensions	Height : 5 Mtr
	Area : 1000 Sq. ft.
Cycle Time	Double Layer : 70 Mins
	Triple Layer : 80 Mins
Production Per Cycle	1000 Ltr x 2 or
	750 Ltr x 2 or
	500 Ltr x 4 or
	300 Ltr x 4
Production Per Day	36,000 Ltr (24 Hrs)
Fuel Consumption	Diesel : 5.5 Ltr/Cycle*
	Gas : 4.2 Kg/cycle*
Max. Temperature	250° C
Total Connected Load	6.5, HP, 3-Phase, 50 Hz

**Technical Specification  
Machine-2000x2**

Machine Size	Length : 7mtr
	Width : 4.5 Mtr
	Height : 6.3 Mtr
Minimum Shed Dimensions	Height : 6.3 Mtr
	Area : 1000 Sq. ft.
Cycle Time	Double Layer : 80 Mins
	Triple Layer : 90 Mins
Production Per Cycle	2000 Ltr x 2 or
	1500 Ltr x 2 or
	1000 Ltr x 4 or
	750 Ltr x 4
Production Per Day	64,000 Ltr (24 Hrs)
Fuel Consumption	Diesel : 9 Ltr/Cycle*
	Gas : 6.9 Kg/cycle*
Max. Temperature	250° C
Total Connected Load	13, HP, 3-Phase, 50 Hz



# Multi Station Shuttle Rotomolding Machine

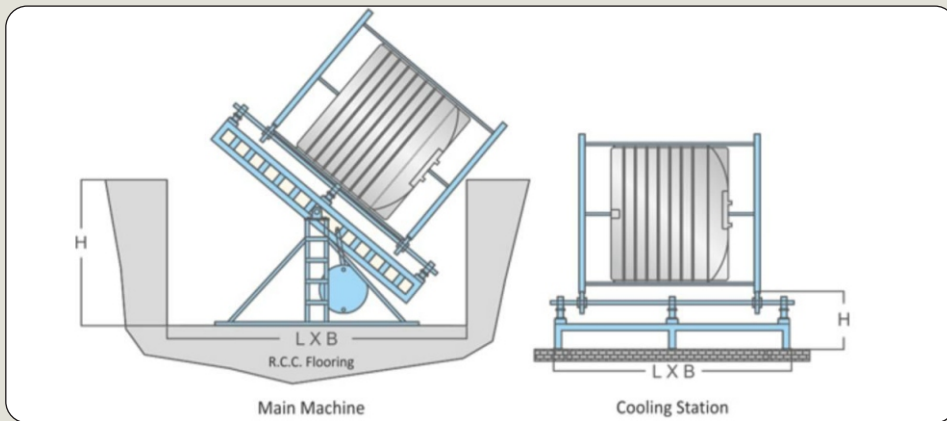
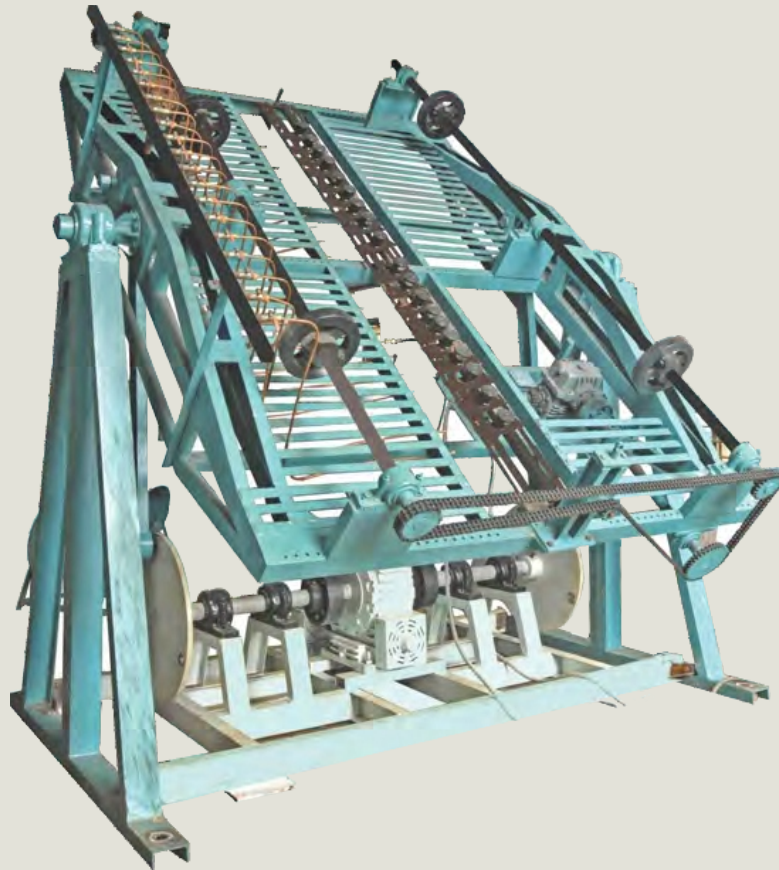


## Technical Specification

Particular	Unit	ASST-2000	ASST-3000	ASST-5000	ASST-7500	ASST-10000	ASST-15000
Oven chamber size	Mtr	3.2x2.5x3.2	3.4 x 2.7 x 3.4	3.6 x 2.8 x 3.6	4.1X3.6X4.1	4.7X4.0X4.7	5.2X4.1X5.2
Fuel Type		Diesel / Gas	Diesel / Gas	Diesel / Gas	Diesel / Gas	Diesel / Gas	Diesel / Gas
Swing Dia Straight Arm.	Mm	2900/475/2100	3200/475/2200	3400/475/2700	3800/475/3200	4400/475/3700	4800/475/3850
Swing Dia Offest Arm.	Mm	1750/400/1600	1900/400/1700	2000/400/2100	2200/400/2600	2900/400/2900	3600/400/3200
Electrical Load	HP	31	33	39	49	65	83
Floor Spare in LxWxH	Mtr	09x11x4	15x10x5	16x10x5	196X13X5	17X14X6	18X16X6



# Rock N Roll Rotomolding Machine

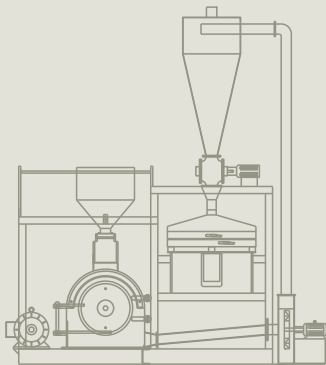


## Technical Specification

Particular	Unit	Models					
		AER-2000	AER-5000	AER-10000	AER-25000	AER-35000	AER-50000
Suitable Container Range	Ltr	200-2000	200-5000	200-10000	500-25000	500-35000	500-50000
Frame Size - L x W	Mtr	3 x 2	3.5 x 2.2	5 x 3	6 x 3	6.5 x 4	7.5 x 5
Pit size : L x W x D	Mtr	4 x 2.5 x 2	4.5 x 3 x 2.2	6 x 3.5 x 2.8	7 x 3.5 x 3	7 x 4.5 x 3.5	8.5 x 5.5 x 4.5
Type of Fuel		Gas	Gas	Gas	Gas	Gas	Gas
Total connected load	HP	6	6	10	22.5	25	35



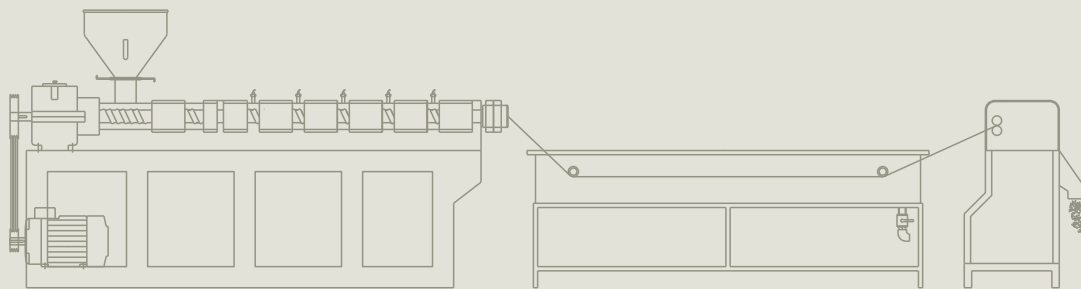
# Microfine Pulversing System



## Technical Specification

Specification	Unit	AEPV-350	AEPV-400	AEPV-450	AEPV-550	AEPV-650
Max. Output In LLDPE (Virgin 20-30 mesh)	Kgs/Hr	100-120	120-150	200-300	300-400	500-600
Max. Output In PVC (Virgin 18-22 mesh)	Kgs/Hr	100-120	150-200	250-300	350-400	500-600
Total Load	KW	26.25	33.75	43.5	66.75	90
Floor Space L x W x H	MTR	2.3 x 1.6 x 3	2.5 x 1.6 x 3.5	2.5 x 1.6 x 3.5	2.5 x 1.6 x 3.5	3 x 2.5 x 4.5

# Extrusion Lines For Coloring, Reprocessing Granules



## Technical Specification

Particular	Unit	Models				
		AEX-75	AEX-90	AEX-100	AEX-110	AEX-125
Main Motor	HP	25	30	40	50	60
Output In LLDPE	KG/HRS	80-100	100-120	150	150-200	200-300
Floor space required		7.5 x 2.0 x 2.0	9.0 x 3 x 2.2	9.1 x 3.2 x 2.3	9.2 x 3.3 x 2.4	9.3 x 3.4 x 2.5



# High Speed Mixer



## Technical Specification

Particular	Unit	Models			
		ASM-75	ASM-150	ASM-200	ASM-300
Motor capacity	Kw	7.5	11.65	18.25	22.50
Batch Mixing capacity	Kgs	15	30	40	60
Approx production per hr.	Kgs/Hr	60-75	125-150	175-200	275-300
Approx weight	Kgs	350	600	700	900



## Solid Granulators



### Technical Specification

Particular	Unit	Models				
		AHR-300	AHR-400	AHR-450	AHR-550	AHR-650
Fixed Knives	No	2	2	2	2	2
Rotary Knives	No	3	3	3	3	3
Grainding Motor	Kw	7.50	11.25	15.00	30.00	37.50
Throat opening	mm	330 x 350	350 x 450	450 x 550	550 x 650	650 x 650
Screen size	mm	10	10	10	10	10
Grinding capacity	Kgs/hr	90-100	150	250	400	600
Floor space in (LXW)	mm	1200 x 1000	1300 x 1100	1600 x 1300	1900 x 1400	2000 x 1500



# Agglomerator



## Technical Specification

Model	Unit	ASAG-75	ASAG-100	ASAG-200	ASAG-300	ASAG-400
Main motor	HP	20	25	40	60	75
Batch Capacity	Kgs	6-8	8-10	16-20	25-30	30-35
Output	Kgs/Hr	60-80	80-100	150-200	200-300	300-400
Application		LD/HM/LLD/ PP/TAPE/PVC	LD/HM/LLD/ PP/TAPE/PVC	LD/HM/LLD/ PP/TAPE/PVC	LD/HM/LLD/ PP/TAPE/PVC	LD/HM/LLD/ PP/TAPE/PVC
Approx Weight	Kgs	1000	1200	1800	2500	2800
Dimensions	Mtr	1.70x0.75x1.50	1.70x0.85x1.50	2x0.85x1.60	2.30x1x1.80	2.30x1.1x1.80



## Screen Vibro



### Technical Specification

Model	Screen Dia. Inch	Screen Dia x Height(mm)
AEVB - 24	24	625 x 650
AEVB - 30	30	775 x 900
AEVB - 36	36	925 x 900
AEVB - 42	42	1075 x 1000
AEVB - 48	48	1250 x 1000
AEVB - 60	60	1550 x 1200
AEVB - 72	72	1850 x 1300

## Enhanced Control for Rotomolding Machines

Our optional PLC-controlled electrical panel, featuring a user-friendly touch screen, brings precise and efficient automation to your rotomolding processes. This advanced system integrates various input sources—push buttons, sensors, switches—while providing seamless output control to relays, motors, valves, and more.

### Key Advantages:

**Precision & Safety:** Ensures accurate operation and high-level operator safety through multiple interlocking mechanisms and audio-visual fault alerts.

**Data Management:** Store production data and recipes effortlessly, with easy access and adjustment of process parameters. Graphical displays offer intuitive monitoring of temperature, speed, and load trends.

**User-Friendly Interface:** Simplified operation and maintenance facilitated by graphical displays, password security, and straightforward troubleshooting. Quick recall of previous product data and parameters streamlines operations from a single station.

Experience enhanced accuracy, safety, and ease of operation with our PLC-controlled rotomolding machine, designed to optimize efficiency and streamline production.





## **ASHWIN's Versatile Roto Molding Machines**

ASHWIN's Roto Molding Machines are tailored for manufacturing a diverse range of Roto Molded products across multiple segments and applications, including:

**Customized Solutions:** Tailoring products to meet specific customer requirements across various Roto Products

**Innovative Designs:** Facilitating the creation of unique and innovative designs for specialized applications.

**Functional Products:** Building functional and high-quality products for a wide array of market needs.

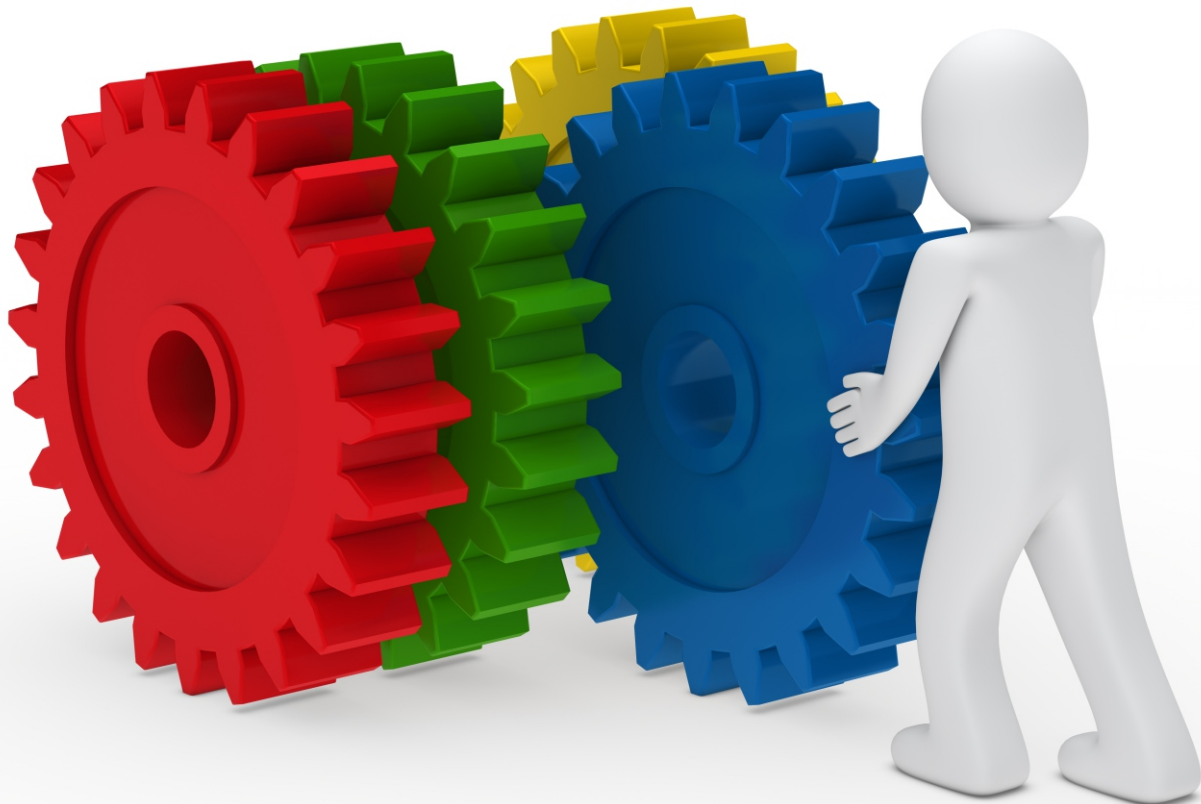
Elevate your manufacturing capabilities with ASHWIN's Roto Molding Machines, designed to cater to diverse segments and applications with precision and efficiency.

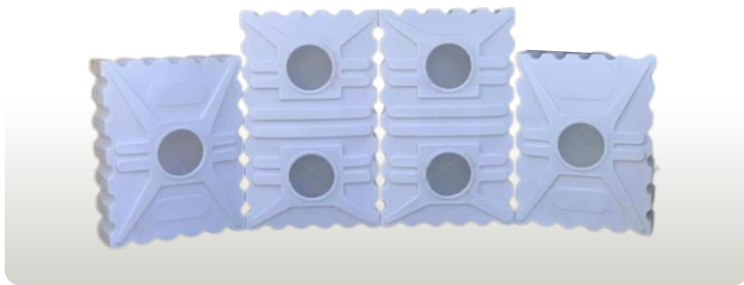
Diverse Applications

Building and Construction:

**Water Storage:** Loft rectangular tanks, underground water tanks (sumps), double/triple layer tanks, PUF insulated tanks.

**Household Solutions:** Household drums, septic tanks, barrels for water and grain storage.







## Crafting Precision Rotational Moulds

At ASHWIN, our Mould Division boasts cutting-edge facilities and a skilled technical team dedicated to crafting precision moulds using computerized design. Our comprehensive tooling setup includes sheet cutting, bending, ribbing, argon welding, and buffing machines. Plus, we house a dedicated Rotomolding unit for rigorous testing of standard and custom-designed Roto moulds.

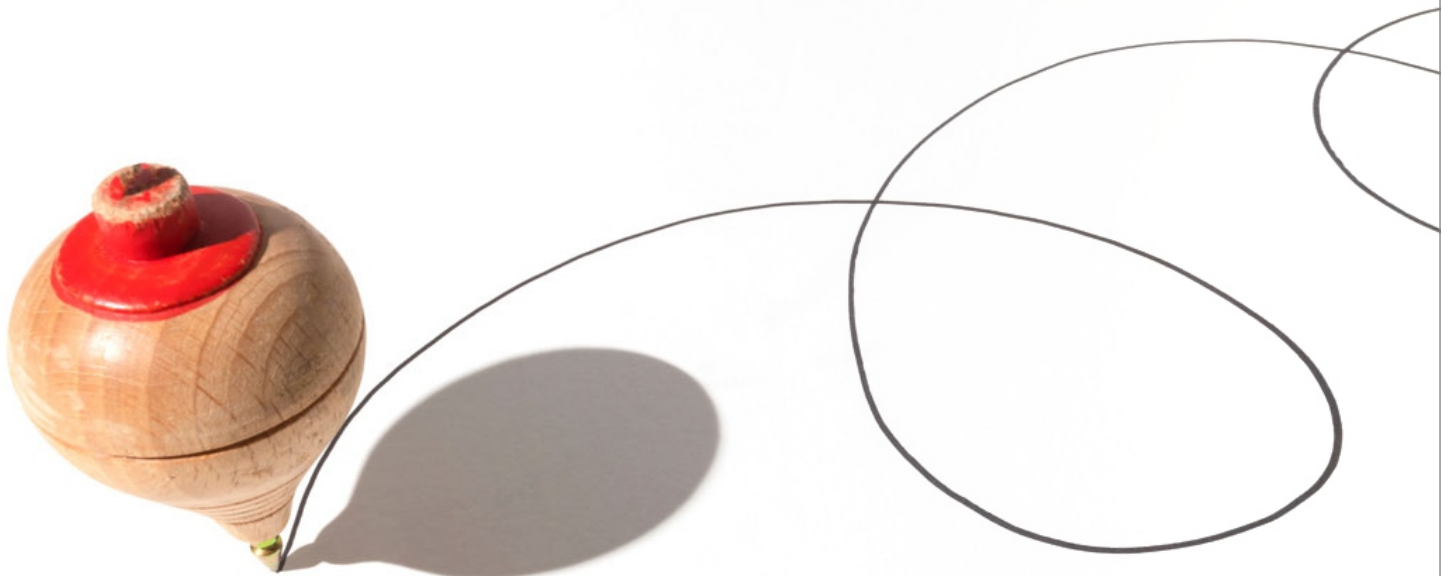
### Why Choose ASHWIN Moulds?

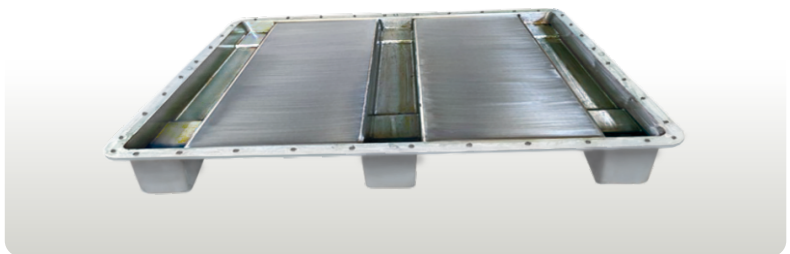
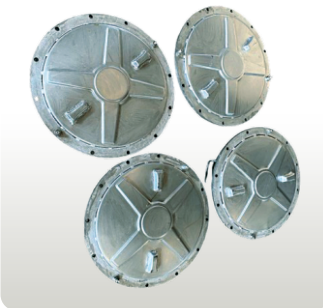
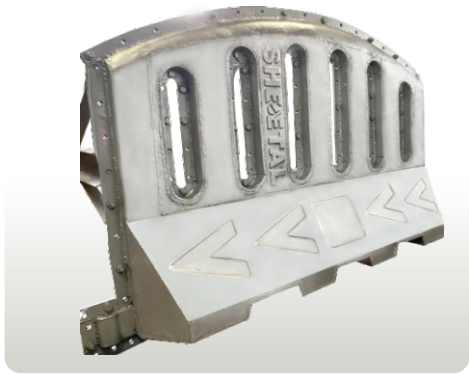
**Exquisite Design:** Moulds expertly fabricated from recommended, top-grade 2 or 3 mm CRC/SS sheets tailored to your specifications.

**Visual Precision:** Autocad Drawings provided in 2D/3D for your approval, ensuring meticulous design alignment.

**Personalized Touch:** Every mould equipped with reverse-engraved embossed logo plates, capacity indicators, and customized instructions to meet your unique requirements.

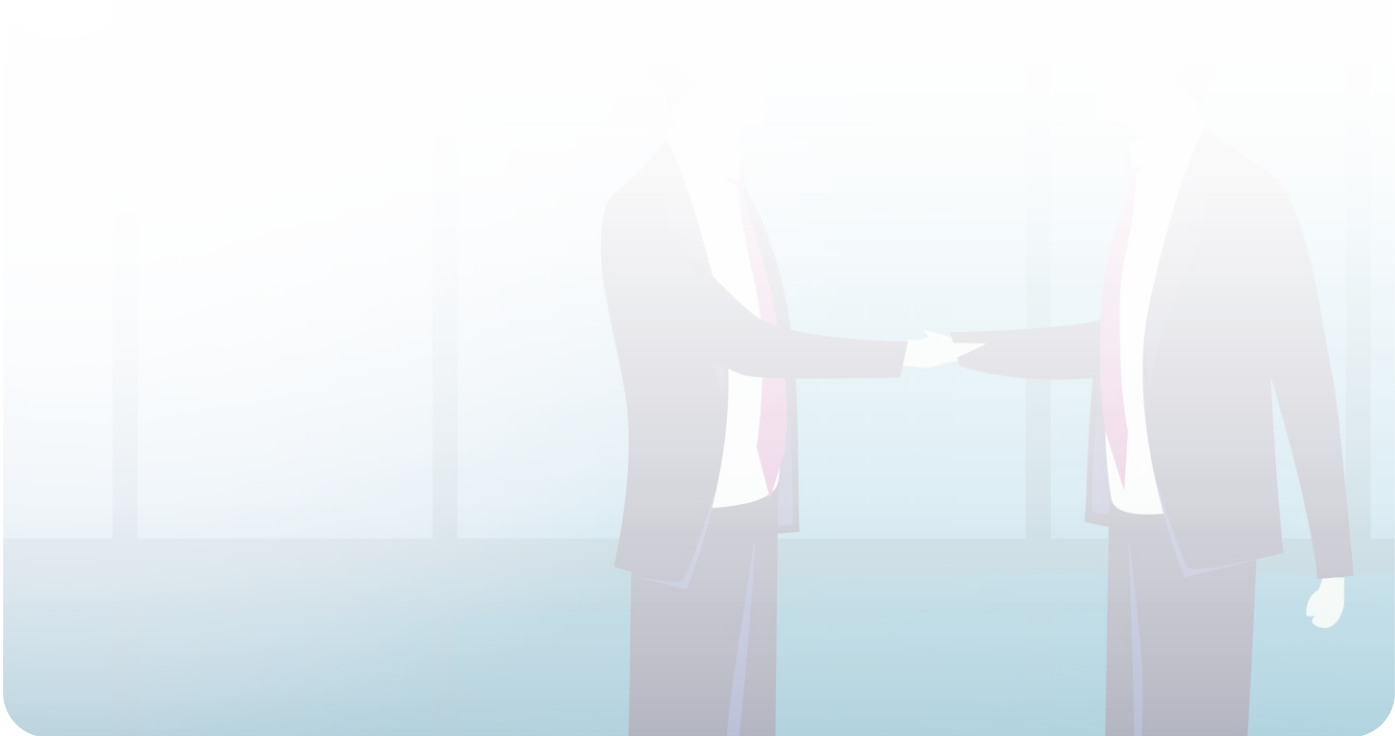
Elevate your product quality with ASHWIN's precision-crafted Rotational Moulds, meticulously designed to meet market demands and exceed expectations.







Partnering for Progress: Celebrating Our Esteemed Customers  
in Our Rotational Moulding Excellence Journey.”





**ASH WIN  
ENGINEERS**

Leading Manufacture & Exporter of  
Rotational Moulding Machines & Moulds  
An ISO 9001 : 2015 Certified Company

**H.O & Works:**

Plot No. 1216 / 29, Phase 4,  
GIDC, Nr. Dishman Pharma,  
Naroda, Ahmedabad - 382330,  
Gujarat, India

[info@ashwinengineersindia.com](mailto:info@ashwinengineersindia.com)  
[export@ashwinengineersindia.com](mailto:export@ashwinengineersindia.com)  
[www.ashwinengineersindia.com](http://www.ashwinengineersindia.com)