

Gear Up for Success

Performance

Packed Equipment!



Mfg. of Packaging Machinery



Uneven
Empty
Bottles



Unscrambler
Machine



Washing Machine
(Air/Water)



Liquid Filling
Machine



Capping
Machine



Labeling or Shrink Sleeve
Machine



Shrinking
Machine

Vision & Mission



Core Values

As a leading Manufacturer and Exporter in India, we strive to deliver Result-Oriented, High-Speed, and Innovative packaging solutions worldwide. With a skilled core team boasting over a decade of experience, we aim for continuous innovation and excellence in Designing, Manufacturing, Installation, and Servicing of Automatic Packaging Machines. Our unwavering commitment to quality ensures meticulous attention to every component, reflecting our defining characteristic of quality assurance.



Core Purpose

Our ultimate goal is to stay successful through consistent Quality and Improvements. We achieve this by developing machines with superior quality, guaranteeing complete client satisfaction.

We have installed more than 1000 machines globally having presence in more than 25 Countries, made us first choice of many industry giants in various industries.



Corporate Vision

"To lead through cutting-edge technology and innovation, forging lasting partnerships globally while prioritizing sustainability and excellence in all endeavours."



Innovation

"We embrace a culture where creativity flourishes, driving us to constantly push boundaries and pioneer new solutions. With a relentless commitment to innovation, we strive to revolutionize industries, exceed expectations, and shape the future of our world."

Product Application



Pharmaceutical



Dairy



Agriculture



Pesticides



Packaging



Distilleries



Beverages



Food & Oil Industries



Cosmetic



Dyes & Chemical

ALWAYS

Ready to apply

INNOVATIVE

Ideas on
Customer's Specific

REQUIREMENT

About Us!

Founded in 2016, Shiv Engineering is a prominent manufacturer and supplier of Bottle Filling and Capping Machines, Sticker Labeling Machine, and Shrink Sleeve Applicator. Situated in Ahmedabad, India, we cater to diverse industries like Pharmaceuticals, Agrochemicals, Beverages, and FMCG. With a focus on quality and innovation, our experienced team ensures reliable, cost-effective solutions from design to after-sales support.

Why Shiv Engineering?

With a commitment to "Earning Customer Trust through Quality" and "Continuous Improvement," we've earned the trust of a diverse customer base. Offering comprehensive Packaging Solutions globally, we welcome customers for personalized consultations. Procuring premium materials, conducting rigorous tests, and prioritizing customer needs, we ensure resilient, high-quality products. Our service support spans 25+ countries, with highly qualified experts providing technical assistance. Client satisfaction is paramount, achieved through superior quality, innovative techniques, and timely delivery. Emphasizing teamwork, we collaborate closely with clients to achieve optimal results, underscoring our dedication to customer success.



■ Automatic Shrink Sleeve Applicator

■ The Automatic Shrink Sleeve Applicator is a versatile, high-speed labeling machine for round, cylindrical, and square bottles. ■ It features a durable stainless steel and aluminum alloy body, a bottle feed worm, sleeve feeder, and a synchronized center pillar and cutter unit for ■ vibration-free operation. ■ Available in three models based on production speed and bottle size, it efficiently cuts and applies sleeves from rolls. Sensors and servo motors ensure precise, even bottle spacing, while a brush unit secures sleeve positioning. ■ An optional heat or steam shrink tunnel provides a premium finish. Ideal for industries like pharmaceuticals, food, beverages, and cosmetics, it delivers high-speed, high-quality shrink labeling.

TECHNICAL PARAMETERS

Type: Servo Motor\Stepper Motor operated Dispenser

Gap Between two Sleeves: Up to 4 mm

Sleeve Roll Core Dia: 76 to 120 mm

Bottle Diameter: 30-100 mm

Direction of Movement: Left to Right

Power supply: Single phase, 220V, 50Hz (Depends on req.)

Machine Dimension: L 2500 x W 1150 x H 2000 mm

Output Per min: Up to 400 BPM

Sleeve Roll Diameter: Up to 400 mm

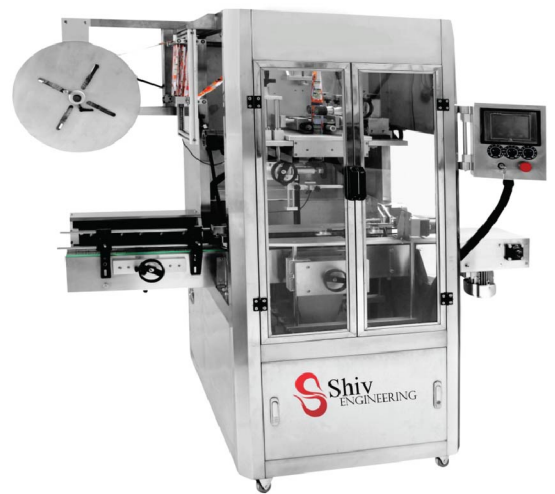
Sleeve height: 10-300 mm

Bottle Height: 30-340 mm

Sleeve Material: PET/PVC/CastFilm

Automation Grade: Automatic

Change Parts: Center Pillar, Feed Worm



Salient Features

■ No Bottle No Sleeve Arrangements ■ Advanced Automation with Dual Servo Motor Control System ■ Fully Touch panel for easy operating ■ Product Counter with Speed in terms of Bottles per minute ■ Vibration free Sleeve Feeder and Cutter Unit ■ Highly Accurate Sleeve Placement ■ High precision Cutter Unit with Servo motor ■ Speed can be vary from single point touch panel ■ Bottle Feed Screw Worm with variable speed ■ Equal Space between two Bottles ■ Tool Less changeover from one bottle to another ■ Acrylic Enclosure with SS Frame for safe operation ■ Stainless Steel Slat Chain Conveyor ■ SS-304 Elegant Matt Finish Machine ■ Complete GMP Model.

Possible Customization

■ IoT-enabled Visual Inspection and Rejection(21 CFR Compliance) ■ Missing sleeve Detection ■ Online Sleeve Buffer Unit for High Speed Operation ■ Sleeve Roll Empty Alarm ■ Barcode Printer/ Batch code printer ■ Tower Light ■ In feed and Out feed Jam Sensors.

■ Steam Shrink Tunnel

■ The Steam Shrink Tunnel, designed for round, cylindrical, and square bottles, features a durable stainless steel and aluminum alloy body, modular steam pipes, and a slat chain conveyor system. It offers high-speed, premium finish shrinking with models suited for various production speeds and bottle sizes. Typically paired with a shrink sleeve applicator, it ensures precise sleeve positioning. Ideal for pharmaceuticals, food and beverages, cosmetics, and other industries, it delivers high-speed, top-quality shrink labeling.

TECHNICAL PARAMETERS

Bottle Diameter: 30-100 mm Bottle

Height: 30-340 mm

Tunnel Dimension: L 2000 x W 550 x H 500mm

Machine Dimension: L 3000 x W 550 x H 2000 mm

Direction of Movement: Left to Right

Sleeve Material: PET/PVC/Cast Film/PLA/OPS

Power supply: Three phase, 415V, 50Hz

Output Per min: Up to 300 BPM(Depends on Tunnel Length)



Salient Features

■ Steam Shrink Tunnel ■ Highly Accurate Sleeve Placement ■ Steam Pressure gauge ■ Adjustable Modular Steam pipes for precise and high quality finish ■ Steam Pressure can monitored for specific bottles ■ Fully Integrated 30KW Steam Generator, ■ Available with 2-4-6 zone for different application ■ Independent Control for each Steam Pipes ■ Dual Safety with Spring valve and Glass tube, ■ Speed can be vary from single point ■ Wrinkles free Premium Shrink Finish.

Possible Customization

■ Digital Temperature Indicator ■ Bottle Neck Holder with rotary design ■ Pre Heat blower ■ Air knife with blower ■ In feed and Out feed Jam Sensors.

■ Heat Shrink Tunnel

- We **SHIV ENGINEERING** offered feature specially designed Heat shrink tunnel that Promise there is no wrinkles, color bleeding or sleeve shifting issues in the end results achieved.
- Its tunnel structure features Highly anti-corrosive SS-304 structure for optimum result.
- The operation speed of the machine is of 40 bottles to 120 bottles/min where the highest speed depends on factors like cut length of sleeve.
- Also we are providing. height adjustable leg for various conveyor heights.
- These Machine is specially designed to handle blower locations so as to achieve maximum distribution of heat and can easily shrink the sleeve like square, rectangular, round, oval items.

Features

- Special design for sleeve shifting issues and wrinkles.
- Allocations of Blower for maximum heat spreading.
- Speed 40 to 120 BPM depends on sleeve characteristics and cut length.
- Height adjustments leg
- SS 304 construction for longer life
- Compatible with round, oval, square bottles.
- Sensors for Automatic cut-off and overheating
- Advance electronics for optimum operations.Special design for sleeve shifting issues and wrinkles.
- Allocations of Blower for maximum heat spreading.
- Speed 40 to 120 BPM depends on sleeve characteristics and cut length.
- Height adjustments leg
- SS 304 construction for longer life
- Compatible with round, oval, square bottles.
- Sensors for Automatic cut-off and overheating
- Advance electronics for optimum operations.



Automatic Electronic Liquid Filling Machine

▪ The Automatic Electronic Liquid Filling Machine is a versatile and efficient solution for rapid and accurate filling of PET, glass, HDPE, and aluminum bottles. ▪ Built with high-quality SS-304 stainless steel and advanced automation components, it features a dedicated pumping system for swift liquid collection from main tanks. ▪ Controlled by PLC and HMI, it accurately measures and adjusts filling volumes. ▪ Setup time is minimal for volume changes, and the user-friendly interface allows for multiple recipes without part changes. ▪ Its synchronized filling and conveyor system, driven by an induction motor, ensures high-speed, low-maintenance operation, making it ideal for diverse liquid filling needs.

TECHNICAL PARAMETERS

Output Per min: Up to 120 BPM

Packaging Types: Bottles

Construction Material: SS-304

Direction of Movement: Left to Right

Power supply: Three Phase, 415, 50 Hz, 3 KW

Number of Head: 4 to 12 Heads

Filling range: 50 to 5000 ml

Accuracy: +/- 1% Dependson Type of Liquid

Operation: Full Touch Panel with Color Display

Air Required: 4-5 CFM with 6 Bar pressure Filters and Regulators

Suitable Products: Any type of Non-Acidic Liquid

Machine Dimension: L 2500 x W 850 x H 1800 mm



Salient Features

▪ 7 Inch Full Touch Color Display with more than 50 recipe Storage ▪ No Bottle, No Filling ▪ High Repeatable Accuracy with Flow Sensors ▪ Inbuilt Transfer pump System ▪ No intermediate tank needed ▪ Drip Free Diving nozzles for Clean Products Conveying
▪ Individual Measurement And Adjustment for each head of filling ▪ Minimum Changeover time with Recipe based system
▪ Adjustable Conveyor Guide to set Different product up to 5 L ▪ No change parts required while changing different volumes,
▪ Diving Nozzles to reduce spillage of foam liquid on conveyor ▪ Bottle Neck Holder to align nozzles before filling ▪ SS-304 Elegant Matt Finish Machine.

Possible Customization

▪ IoT-enabled Machine Monitoring System ▪ Online Visual Inspection and Rejection ▪ Tower Light ▪ Self-centering Cup ▪ In feed and Out feed Jam Sensors ▪ Flameproof System.

Automatic Edible Oil Tin Filling Machine

▪ The Automatic Edible Oil Tin Filling Machine is a robust and elegant solution for fast, accurate filling of edible and lube oils. ▪ Versatile in handling metal tins, HDPE jerry cans, buckets, and bottles, it features stainless steel SS-304 construction and premium automation components. ▪ With an overhead tank for liquid transfer, it uses a Load Cell Based Automation system for precise flow measurement, controlled by PLC and HMI. Ideal for the edible oil industry, it offers accurate filling with weight sensors and options for coarse and fine filling spans. ▪ Setup is quick for volume changes, with easy programming of multiple recipes. ▪ The induction motor-driven conveyor system synchronizes with the filling process and is adjustable by PLC for desired speeds. ▪ User-friendly, low maintenance, and high-speed, it's an excellent choice for liquid filling needs.

TECHNICAL PARAMETERS

Type: Flow Meter Based

Output Per min: Up to 600 Tins per hour

Packaging Types: Tins, Jerry Cans and Buckets

Construction Material: SS-304

Direction of Movement: Left to Right

Power supply: Single phase, 220V, 50Hz (Depends on req.)

Machine Dimension: L 3000 x W 1150 x H 2200 mm

Filling range: 5L to 20L

Accuracy: +/- 1% Depends on Type of Liquid

Operation: Full Touch Panel with Color Display

Air Required: 6-8 CFM with 6 Bar pressure Filters and Regulators

Number of Head: 4 to 12 Heads



Salient Features

▪ No Containers, No Filling ▪ 7 Inch Full Touch Color Display with more than 50 recipe Storage ▪ High Repeatable Accuracy with Perfect Weight ▪ Inbuilt Tank and Level Sensor ▪ No intermediate tank needed ▪ Safety Cabinet for more hygienic environment ▪ Drip Free nozzles for Clean Products Conveying ▪ Individual Weight for each head of filling ▪ Course and Fine Filling System for better Weight accuracy ▪ Each nozzle Weight adjustable with help of HMI ▪ Diving Nozzles to reduce spillage of foam liquid on conveyor ▪ SS-304 Elegant Matt Finish Machine.

Possible Customization

▪ IoT-enabled Machine Monitoring System ▪ Tower Light for Status of Machines ▪ In feed and Out feed Jam Sensors ▪ Flameproof System.

Automatic Volumetric Liquid Filling Machine

▪ The Automatic Volumetric Liquid Filling Machine is ideal for viscous liquids, offering a filling range up to 1L. ▪ With a stainless steel body, SS-slat chain conveyor, and drip-free diving nozzles featuring self-centering cups, it ensures precision. ▪ Stainless steel volumetric syringes enable accurate filling of semi-viscous to low-viscous liquids like oil, milk, ketchup, shampoo, and lotion. ▪ Synchronized conveyor and main motor indexing, along with twin pneumatically operated stoppers, facilitate spillage-free operation. ▪ Adjustment features minimize foaming for liquids prone to foaming, while filling volume can be easily set via built-in volume blocks. ▪ Widely used across pharmaceuticals, food, pesticides, oils, cosmetics, and more, it's a versatile solution for various industries.

TECHNICAL PARAMETERS

Output Per min: Up to 120 BPM

Packaging Types: Bottles

Direction of Movement: Left to Right

Power supply: Single phase, 220V, 50Hz (Depends on req.)

Number of Head: 4 to 10 Heads

Filling range: 50 to 1000 ml

Accuracy: +/- 1% Depends on Type of Liquid

Operation: Full Touch Panel with Color Display

Air Required: 2 CFM with 6 Bar pressure Filters

Construction Material: SS-304

Machine Dimension: L 2000 x W 850 x H 1800 mm



Salient Features

▪ No Bottle No Filling ▪ High Repeatable Accuracy ▪ Drip Free nozzles for Clean Products Conveying ▪ Each nozzle Volume adjustable by Volume Block ▪ Minimum Changeover time ▪ Measuring Scale on Volume Block for easy Volume Change ▪ Stainless Steel Construction to ensure durability ▪ Adjustable Conveyor Guide to set Different product up to 1 L ▪ Diving Nozzles to reduce spillage of foam liquid on conveyor ▪ Self-Centering Cups to align nozzles before filling ▪ Stainless Steel Slat Chain Conveyor

▪ SS-304 Elegant Matt Finish Machine.

Possible Customization

▪ Online Visual Inspection and Rejection ▪ Tower Light ▪ Advance Automation with Touch Panel ▪ Self-centering Cup ▪ Safety Cabinet

▪ In feed and Out feed Jam Sensors ▪ Flameproof System.

Automatic Screw/ROPP Capping Machine

▪ The Automatic Screw Capping Machine is versatile, handling round, square, and triangular bottles up to 1L. ▪ With a durable stainless steel matt-finished body and SS-slat chain conveyor, it features an indexing system for bottle alignment and a Vibro shifter/Cap Orientation Unit for continuous cap feeding. ▪ Synchronization of the conveyor drive and main motor allows precise bottle indexing, while the Indexed Product wheel positions bottles for tight sealing via a reciprocating up-down system. ▪ Optional components like cap elevators and motorized cap orientation systems enhance functionality. Widely used in pharmaceuticals, food, pesticides, oils, and cosmetics, it ensures spillage-free operation and cleanliness.

TECHNICAL PARAMETERS

Output Per min: Up to 40 BPM

Packaging Types: Bottles

Construction Material: SS-304

Direction of Movement: Left to Right

Power supply: Single phase, 220V, 50Hz (Depends on req.)

Number of Head: 1,4,6,8 Head

Filling range: 50 to 1000 ml

Indexing System: Geneva Mechanism

Suitable Products: Any type of Bottles with Screw/ROPP Cap

Machine Dimension: L 2000 x W 850 x H 1800 mm



Salient Features

▪ No Bottle No Cap ▪ Capping Head setting by Magnetic Torque Setting ▪ Single motor Synchronism for Capping Head and Conveyor
▪ Sealing Pressure can be set to suite with different cap application ▪ Indexed Product Wheel specially designed as per bottle shape
▪ Self Lubricating UHMW profile for noise free operation ▪ Motorized Cap Orientation system to accommodate more caps
▪ Stainless Steel Construction to ensure durability ▪ Adjustable Conveyor Guide to set Different product ▪ Stainless Steel Slat Chain Conveyor ▪ SS-304 Elegant Matt Finish Machine.

Possible Customization

▪ Pick and Place Arrangements ▪ Tower Light ▪ Advance Automation with Touch Panel ▪ Servo motor for torque Setting ▪ Safety Cabinet ▪ In feed and Out feed Jam Sensors ▪ Flameproof System.

Automatic Bottle Sticker Labelling Machine

▪ The Automatic Bottle Sticker Labelling Machine accommodates various bottle shapes for label wrapping, featuring a stainless steel body, Wraparound Unit, Label Dispensing System, and Bottle Separator Unit. Offering cost-effective solutions, it ensures high-quality labelling for round, cylindrical, and square containers. ▪ Its Touch Screen interface allows easy adjustments for different bottles without part changes. ▪ Synchronization between conveyor drive, Photoelectric Sensor, and Label Dispensing Unit guarantees precise label application. ▪ The personalized Wrap-around Unit ensures smooth bottle movement. Equipped with a specially designed Traction roller, it facilitates fast and effortless labelling. ▪ Advanced servo motor control enables high-speed and accurate labelling. ▪ Incorporating latest inspection sensor technology, it detects label presence for rejection of unlabelled bottles. ▪ Widely utilized in pharmaceuticals, food, pesticides, oils, cosmetics, and other industries, it's essential for top-tier manufacturing and efficient production.

TECHNICAL PARAMETERS

Type: Servo Motor\Stepper Motor operated Dispenser

Gap Between two Labels: Up to 4 mm

Label Roll Core Dia: 76 mm

Bottle Diameter: 30-100 mm

Direction of Movement: Left to Right

Power supply: Single phase, 220V, 50Hz (Depends on req.)

Output Per min: Up to 200 BPM

Label Roll Diameter: Up to 290 mm

Bottle height: 30-280 mm

Suitable Products: Any type of Round and Square Bottles

Machine Dimension: L 2000 x W 1150 x H 1400 mm



Salient Features

▪ No Bottle No Label Arrangements ▪ Advanced Automation with Servo Motor Control System ▪ Fully Touch panel for easy operating
▪ Product Counter with Speed in terms of Bottles per minute ▪ Vibration free Label Dispenser Unit ▪ High-tech Traction Roller and Rubber Roller ▪ Automatic Label Length Detection system ▪ Highly accurate Label Placement ▪ Bottle Separator unit with variable speed ▪ Noise free motorized Wrap-around Unit ▪ Minimum Changeover time ▪ Adjustable Conveyor Guide to set Different product up to 1 L ▪ Stainless Steel Slat Chain Conveyor ▪ SS-304 Elegant Matt Finish Machine.

Possible Customization

▪ IoT-enabled Visual Inspection and Rejection(21 CFR Compliance) ▪ Missing Label Detection ▪ Label Roll Empty Alarm ▪ Transparent label sensor ▪ Tower Light ▪ Machine Enclosure for Safety ▪ In feed and Out feed Jam Sensors ▪ Flameproof System.

Automatic Double Side Sticker Labelling Machine

▪ The Automatic Double Side Sticker Labeling Machine is a versatile, durable solution for applying labels to various bottle shapes efficiently. ▪ With a stainless steel body and advanced features like a stabilizing belt conveyor and label dispensing unit, it ensures high-quality labeling on both front and back sides. ▪ Equipped with sensor technology and servo motor control, it offers precise application and high-speed operation. ▪ Its inspection sensors detect label presence, enhancing production efficiency by rejecting unlabeled bottles. Suitable for industries like pharmaceuticals, food, cosmetics, and more, it's a cost-effective choice for efficient manufacturing.

TECHNICAL PARAMETERS

Type: Servo Motor\Stepper Motor operated Dispenser

Gap Between two Sleeves: Up to 4 mm

Bottle Diameter: 30-100 mm

Direction of Movement: Left to Right

Power supply: Single phase, 220V, 50Hz (Depends on req.)

Machine Dimension: L 2500 x W 1850 x 1600 mm

Output Per min: Up to 300 BPM Depends on labels and bottles

Label Roll Dimension: ID- 76mm, OD- 290 mm

Label height: 10-150 mm

Bottle Height: 30-280mm(Customized)

Label Material: Self-adhesive Label

Suitable Products: Any type of Round, Oval and Square Bottles



Salient Features

▪ No Bottle No Label Arrangements ▪ Advanced Automation with Servo Motor Control System ▪ Fully Touch panel for easy operating ▪ Product Counter with Speed in terms of Bottles per minute ▪ Vibration free Label Dispenser Unit ▪ Side belt System for centering Bottles on Conveyor ▪ Feed Screw worm for Oval and special shape bottles ▪ High-tech Traction Roller and Rubber Roller ▪ Automatic Label Length Detection system ▪ Minimum Changeover time ▪ Stainless Steel – 304 Construction to ensure durability ▪ Adjustable Conveyor Guide to set Different product up to 1 L.

Possible Customization

▪ IoT-enabled Visual Inspection and Rejection(21 CFR Compliance) ▪ Missing Label Detection ▪ Label Roll Empty Alarm ▪ Barcode Printer/ Batch code printer ▪ Tower Light ▪ Machine Enclosure for Safety ▪ In feed and Out feed Jam Sensors ▪ Flameproof System.

Automatic Top and Bottom Sticker Labeling Machine

▪ The Automatic Top and Bottom Sticker Labeling Machine efficiently labels containers on either the top or bottom. ▪ It features a stainless steel body, label dispensing system, and label presence sensor for cost-effective, high-speed precision labeling. ▪ Touch screen adjustments allow versatility without part changes. ▪ Synchronization between the conveyor drive, photoelectric sensor, and label dispensing unit ensures flawless application. ▪ Specially designed traction rollers and an advanced servo motor control system provide rapid, accurate labeling. ▪ An inspection sensor detects label presence, rejecting unlabeled bottles. It also includes a hologram label applicator for security seals. ▪ Ideal for pharmaceuticals, food, pesticides, oils, cosmetics, and more, it ensures secure, tamper-proof labeling.

TECHNICAL PARAMETERS

Label Material: Self-adhesive Label

Label Roll Core Dia: 76 mm

Bottle Diameter: 30-100 mm

Power supply: Single phase, 220V, 50 Hz (Depends on req.)

Machine Dimension: L 1500 x W 750 x H 1900mm

Output Per min: Up to 250 BPM

Label Roll Diameter: Up to 290 mm

Label Size: L10-300 x W10-150 mm

Bottle Height: 30-320 mm

Gap Between two Labels: Up to 4 mm



Salient Features

▪ No Bottle No Label Arrangements ▪ Advanced Automation with Servo Motor Control System ▪ Fully Touch panel for easy operating ▪ Product Counter with Speed in terms of Bottles per minute ▪ Vibration free Label Dispenser Unit ▪ High-tech Traction Roller and Rubber Roller ▪ Automatic Label Length Detection system ▪ Speed can be vary from single point touch panel ▪ Highly accurate Label Placement ▪ Minimum Changeover time ▪ Adjustable Conveyor Guide to set Different product up to 1 L ▪ SS-304 Elegant Matt Finish Machine.

Possible Customization

▪ IoT-enabled Visual Inspection and Rejection(21 CFR Compliance) ▪ Missing Label Detection ▪ Label Roll Empty Alarm ▪ Tower Light ▪ Machine Enclosure for Safety ▪ Advance Automation with Touch Panel ▪ In feed and Out feed Jam Sensors ▪ Flameproof System.

Automatic Hologram Label Applicator

- The Automatic Hologram Label Applicator efficiently labels bottle tops at high speeds up to 600 labels per minute. ▪ It features a stainless steel matt-finished body, label dispensing system, and label presence sensor. ▪ This cost-effective machine ensures high-quality labeling and easy touch screen adjustments for various bottles without part changes. ▪ An inspection sensor detects and rejects unlabeled bottles. ▪ It applies excise stamp labels on caps in L and U shapes accurately and quickly. ▪ Widely used in pharmaceuticals, food, pesticides, edible and lube oils, cosmetics, and more, it ensures secure, tamper-proof labeling.

TECHNICAL PARAMETERS

Label Material: Self-adhesive Label

Label Roll Core Dia: 76 mm

Bottle Diameter: 30-100 mm

Power supply: Single phase, 220V, 50 Hz (Depends on req.)

Machine Dimension: L 1500 x W 750 x H 1900mm

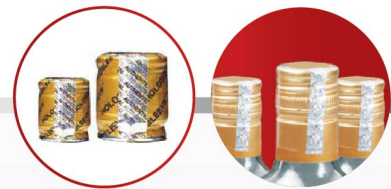
Output Per min: Up to 600 BPM

Label Roll Diameter: Up to 400 mm

Label Size: L10-50 x W10-100 mm

Bottle Height: 30-320 mm

Gap Between two Labels: Up to 4 mm



Salient Features

- No Bottle No Label Arrangements ▪ Advanced Automation with Servo Motor Control System ▪ Fully Touch panel for easy operating ▪ Heavy Ms-Powder Coating Stand ▪ Product Counter with Speed in terms of Bottles per minute ▪ Vibration free Label Dispenser Unit ▪ High-tech Traction Roller and Rubber Roller ▪ Automatic Label Length Detection system ▪ High Speed Up to 600 Labels per minute ▪ Highly accurate Label Placement ▪ Minimum Changeover time ▪ Adjustable Conveyor Guide to set Different product up to 1 L ▪ Stainless Steel Slat Chain Conveyor ▪ SS-304 Elegant Matt Finish Machine.

Possible Customization

- IoT-enabled Visual Inspection and Rejection(21 CFR Compliance) ▪ Missing Label Detection ▪ Label Roll Empty Alarm ▪ Tower Light
- Machine Enclosure for Safety ▪ In feed and Out feed Jam Sensors ▪ Flameproof System.

Automatic Augur Type Powder Filling Machine

▪ The Automatic Augur Type Powder Filling Machine efficiently fills various powder products into bottles, including medical, dusting, efflorescent, and pharmaceutical powders for tablets. ▪ Compatible with PET, glass, HDPE, and aluminum bottles, it's crafted with stainless steel SS-304 and top-quality automation equipment. ▪ Featuring augur and funnel principles with servo motor technology, it ensures precise and accurate filling. ▪ Flow measurement is facilitated by servo motors and augur combinations, controlled via PLC and HMI. Agitators in hoppers maintain a continuous powder flow. ▪ Setup adjustments for different volumes are swift and seamless. Multiple recipes can be programmed without part changes. ▪ Widely used in pharmaceuticals and agrochemical industries for hygienic packaging, it employs a conveyor driven by an induction motor and a pneumatic system for bottle arrangement. User-friendly, low maintenance, and high-speed, it's an essential machine for efficient powder filling processes.

TECHNICAL PARAMETERS

Type: Augur Based Powder Filling System

Output Per min: Up to 25 BPM

Packaging Types: Bottles

Construction Material: SS-304

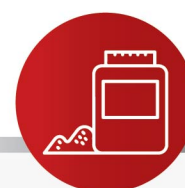
Power supply: Single phase, 220V, 50Hz (Depends on req.)

Machine Dimension: L 2000 x W 1000 x H 2000 mm

Operation: Full Touch Panel with Color Display

Air Required: 4-5 CFM with 6 Bar pressure Filters and Regulators

Number of Head: 1 to 4 Heads



Salient Features

▪ No Bottle No Filling ▪ 7 Inch Full Touch Color Display with more than 50 recipe Storage ▪ High Repeatable Accuracy ▪ Agitator System for Continuous Flow of powder ▪ Highly Accurate Stainless Steel Augur and Funnel system ▪ Stainless Steel Hoppers with mirror finishing Contact side ▪ Vacuum Nozzles for clean platform and conveyor ▪ Vacuum nozzles will suck excessive powder flowing from augur ▪ Individual Servo Motors for each Filling Hopper ▪ Each Augur filling weight adjustable by HMI ▪ Minimum Changeover time with Recipe based system ▪ Diving type funnels to reduce spillage of Powder on conveyor.

Possible Customization

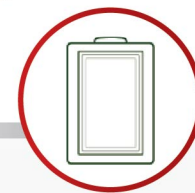
▪ IoT-enabled Machine Monitoring System ▪ Online Visual Inspection and Rejection ▪ Tower Light ▪ Self-centering Cup
▪ In feed and Out feed Jam Sensors ▪ Flameproof System.

■ Semi-Automatic Weigh Metric Oil Tin Filling Machine

■ The Semi-Automatic Weigh Metric Oil Tin Filling Machine is designed for precise and efficient filling of liquids from 5 kg to 20 kg. ■ It handles metal tins, HDPE jerry cans, buckets, and bottles with high-grade SS-304 construction and advanced automation. ■ The machine uses a Load Cell Based Automation system for accurate flow measurement and control, ensuring precise filling. ■ Ideal for the edible oil industry, it features weight sensors for coarse and fine filling spans. Minimal setup time is needed for volume changes, and multiple recipes can be programmed via the user-friendly interface. ■ Durable, low maintenance, and compact, it is a versatile solution for various filling needs.

TECHNICAL PARAMETERS

Type: Load cell Based Filling System
Output Per min: Up to 70 Tins per hour
Packaging Types: Tins, Jerry Cans and Buckets
Power supply: Single phase, 220V, 50Hz (Depends on req.)
Filling range: 5L to 20L
Operation: Full Touch Panel with Color Display
Machine Dimension: L 500 x W 500 x H 1000 mm
Air Required: 6-8 CFM with 6 Bar pressure Filters and Regulators
Number of Head: 1 to 8 Heads



Salient Features

■ Semi-Automatic Weigh Metric Liquid Filling Machine ■ No Bottle No Filling ■ 80-100 Tins per hour ■ High Repeatable Accuracy with Perfect Weight ■ Drip Free nozzles for Clean Products Conveying ■ Individual Weight for each head of filling ■ Course and Fine Filling System for better Weight accuracy ■ Each nozzle Weight adjustable with help of Controller ■ Minimum Changeover time with Recipe based system ■ No change parts required while changing different volumes.



Automatic Bottle Unscrambler



Air Jet Cleaning Machine



Automatic Multi Head Cap Sealing Machine



Tablet counting



Induction Sealing Machine



Semi Automatic Sticker Labeling Machine

Shiv Engineering has achieved the honors for the "Best Performance Machinery" in following companies.






Exporting to
30+ Countries

 www.shivengineerings.com, www.shiveng.in

 info@shivengineerings.com

 +91 81284 02026 / +91 97271 07341

 B 24, Dev I Land, Nr.karm Estate B/h.zaveri Estate,
Kathwada Tal Daskroi, Ahmedabad, Gujarat.

