



VirtuMED

ASAHI
CHIKAI Family
Neurovascular GuideWire



 Your dreams. Woven together.
ASAHI INTECC

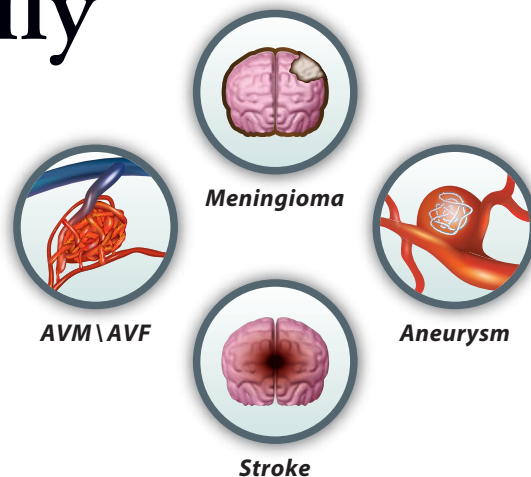


ASAHI CHIKAI Family

Neurovascular GuideWire

**Providing good torque response,
support and durability for
neuro interventional procedures**

ASAHI CHIKAI family of guide wires has been originally developed based on Asahi Intecc's unique set of technologies which accomplished great success in the field of cardiovascular interventions.



Technologies with Dual-coil design using ACT ONE



**Employs the ASAHI brand rope coil,
which provides torqueability, flexibility and resiliency.**

ASAHI INTECC CO., LTD.'s unique technologies in wire drawing, wire forming, torque transmission and coating are utilized to create highly responsive guide wires featuring ASAHI's ACT ONE, dual-coil design.



Key features

■ Precise torque response

– ACT ONE provides exceptional torque response in tortuous anatomy.

■ Durable tip-shape retention

– Incorporating with ACT ONE, re-shapable pre-shaped round curve and 90 degree angle enhance tip shape memory and durability.



Angled 90°

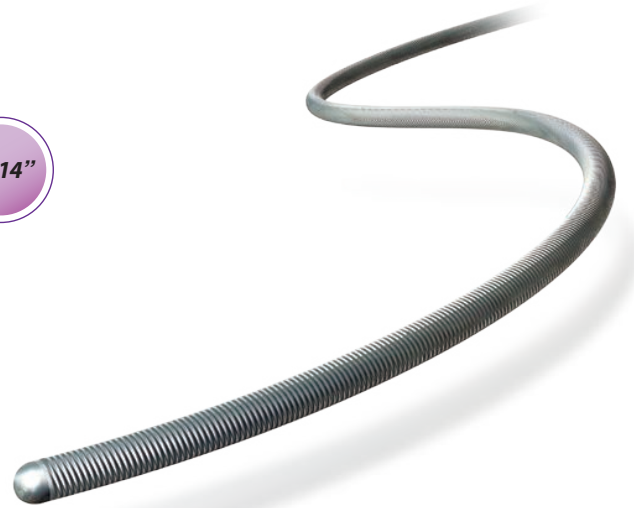
※ Available for CHIKAI black



Round curve

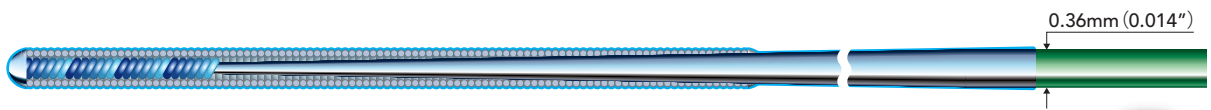


ASAHI CHIKAI, ASAHI CHIKAI 10 and ASAHI CHIKAI 008 are designed for an optimal balance between tip flexibility and microcatheter support



ASAHI CHIKAI (200cm, 300cm)

– 0.36mm (0.014") workhorse guide wire



- Tip radiopacity 5 cm
 - SLIP-COAT® hydrophilic coating 170 cm
- ▶ Well-balanced workhorse wire

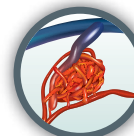


ASAHI CHIKAI 008 (200cm)

– Soft flexible tip & distal body



- Tip radiopacity 9 cm
 - SLIP-COAT® hydrophilic coating 180 cm
- ▶ Distal anatomy / small-sized vessels
▶ Compatible with microcatheters with small inner lumen

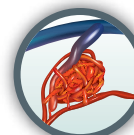


ASAHI CHIKAI 10 (200cm, 300cm)

– Balanced tip and higher body support



- Tip radiopacity 3 cm
 - SLIP-COAT® hydrophilic coating 170 cm
- ▶ Mid to distal anatomy / larger-sized vessels
▶ Compatible with microcatheters with relatively larger inner lumen



ASAHI CHIKAI black

Neurovascular GuideWire

0.014"

0.018"



Stroke



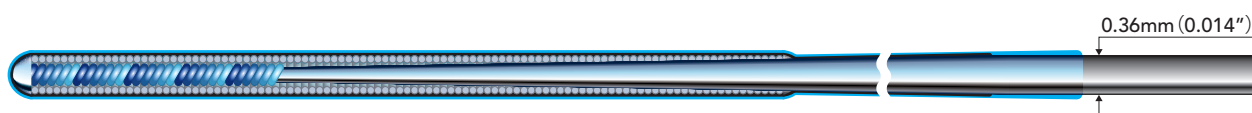
Aneurysm

Providing excellent support and less friction due to polymer jacket and hydrophilic coating for smooth delivery of microcatheter



ASAHI CHIKAI black (200cm)

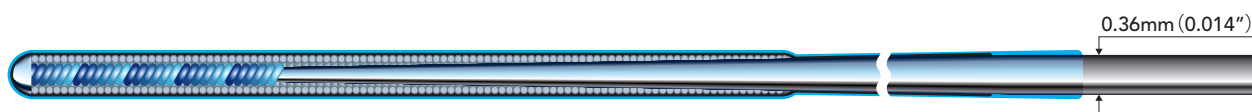
– 0.36mm (0.014") guide wire with enhanced lubricity



- Tip radiopacity 3 cm
 - Polymer jacket length 150 cm
 - SLIP-COAT® hydrophilic coating 170 cm
- ▶ Complex cases and targeting distal anatomy
 - ▶ Ease distal aspiration catheter placement

ASAHI CHIKAI black 14 soft tip (200cm)

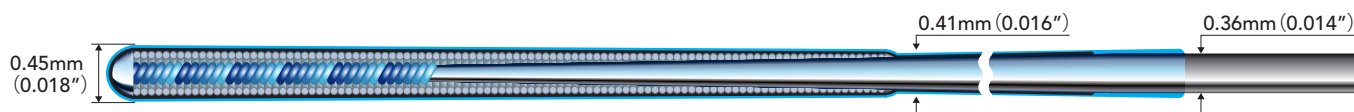
– Safe manipulation



- Tip radiopacity 3 cm
 - Polymer jacket length 150 cm
 - SLIP-COAT® hydrophilic coating 170 cm
- ▶ Complex cases and targeting distal anatomy
 - ▶ Ease distal aspiration catheter placement
 - ▶ Softer tip enhances safety in challenging anatomies
 - ▶ 43% softer tip than CHIKAI black

ASAHI CHIKAI black 18 (200cm)

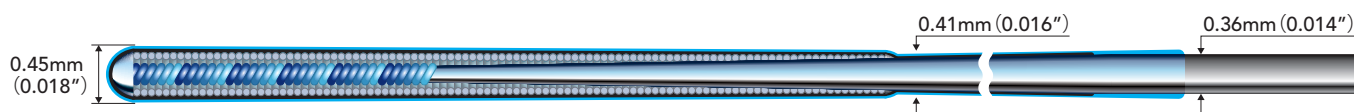
– Speciality guide wire



- Tip radiopacity 5 cm
 - Polymer jacket length 150 cm
 - SLIP-COAT® hydrophilic coating 170 cm
- ▶ Enough support to deliver large ID microcatheter
 - ▶ Reverse tapered shaft design to avoid ledge effect
 - ▶ Ease clot retriever delivery and positioning

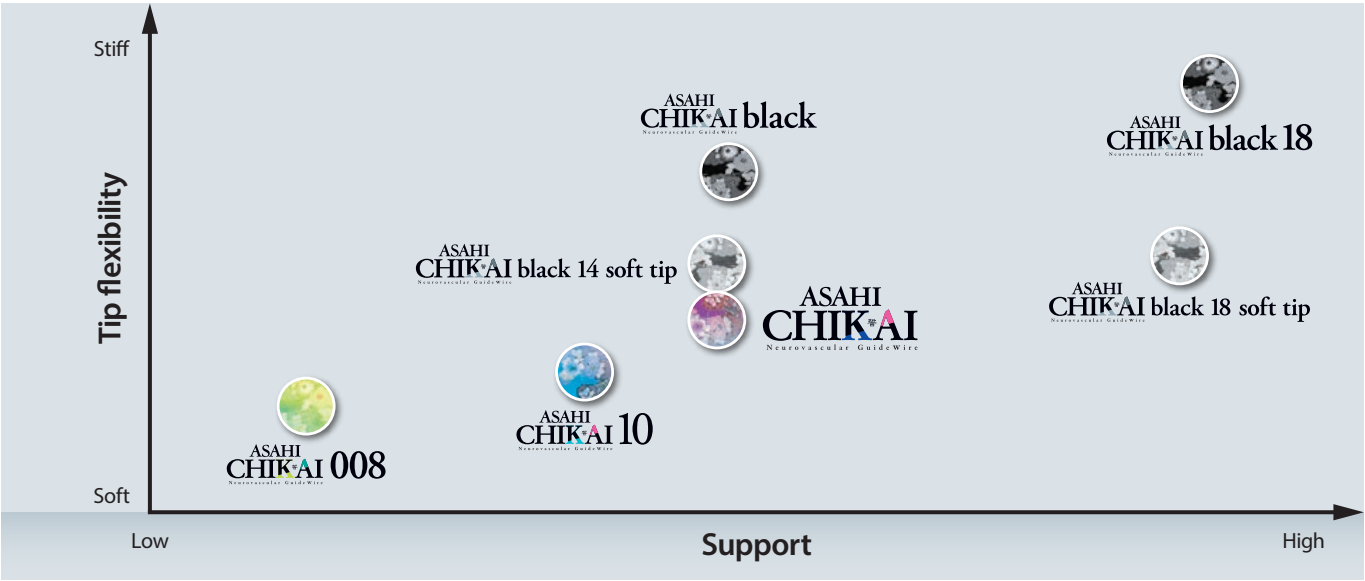
ASAHI CHIKAI black 18 soft tip (200cm)

– Speciality guide wire



- Tip radiopacity 5 cm
 - Polymer jacket length 150 cm
 - SLIP-COAT® hydrophilic coating 170 cm
- ▶ Enough support to deliver large ID microcatheter
 - ▶ Reverse tapered shaft design to avoid ledge effect
 - ▶ Ease clot retriever delivery and positioning
 - ▶ 30% softer tip than CHIKAI black 18

Positioning



normal vessels / standard cases

ASAHI
CHIKAI
Neurovascular GuideWire



tortuous vessels / complex cases

ASAHI
CHIKAI black
Neurovascular GuideWire

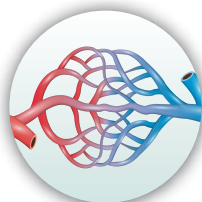
ASAHI
CHIKAI black 14 soft tip
Neurovascular GuideWire



tiny vessels / precision cases

ASAHI
CHIKAI 10
Neurovascular GuideWire

ASAHI
CHIKAI 008
Neurovascular GuideWire



large vessels / high support cases

ASAHI
CHIKAI black 18
Neurovascular GuideWire

ASAHI
CHIKAI black 18 soft tip
Neurovascular GuideWire



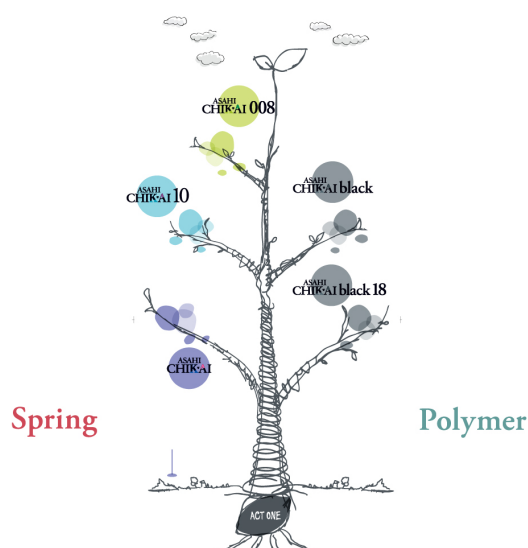
Specification & ordering information

Product	Catalog No.	O.D.	Coating	Usable length	Coil length	Radiopaque length	Tip shape
ASAHI CHIKAI 008	WAIN-CKI-008-200	0.20/0.26mm (0.008/0.010inch)	Hydrophilic coating (SLIP-COAT®) 180cm	200cm	9cm	9cm	Straight
ASAHI CHIKAI 10	WAIN-CKI-10-200	0.26mm (0.010inch)	Hydrophilic coating (SLIP-COAT®) 170cm	200cm	9.5cm	3cm	Straight
	WAIN-CKI-10-300	0.26mm (0.010inch)	Hydrophilic coating (SLIP-COAT®) 170cm	300cm	9.5cm	3cm	Straight
ASAHI CHIKAI	WAIN-CKI-200	0.36mm (0.014inch)	Hydrophilic coating (SLIP-COAT®) 170cm	200cm	30cm	5cm	Straight
	WAIN-CKI-200-RC	0.36mm (0.014inch)	Hydrophilic coating (SLIP-COAT®) 170cm	200cm	30cm	5cm	Round curve
	WAIN-CKI-300	0.36mm (0.014inch)	Hydrophilic coating (SLIP-COAT®) 170cm	300cm	30cm	5cm	Straight
	WAIN-CKI-300-RC	0.36mm (0.014inch)	Hydrophilic coating (SLIP-COAT®) 170cm	300cm	30cm	5cm	Round curve
ASAHI CHIKAI black	WAIN-CKI-200-BS	0.36mm (0.014inch)	Polymer jacket 150cm / Hydrophilic coating (SLIP-COAT®) 170cm	200cm	30cm	3cm	Round curve
	WAIN-CKI-200-BA	0.36mm (0.014inch)	Polymer jacket 150cm / Hydrophilic coating (SLIP-COAT®) 170cm	200cm	30cm	3cm	Angled 90°
ASAHI CHIKAI black 14 soft tip	AIN-CKI-200-B-SFT	0.36mm (0.014inch)	Polymer jacket 150cm / Hydrophilic coating (SLIP-COAT®) 170cm	200cm	30cm	3cm	Round curve
ASAHI CHIKAI black 18	WAIN-CKI-18-200-BS	0.45/0.36mm (0.018/0.014inch)	Polymer jacket 150cm / Hydrophilic coating (SLIP-COAT®) 170cm	200cm	34cm	5cm	Round curve
ASAHI CHIKAI black 18 soft tip	AIN-CKI-18-200-SFT	0.45/0.36mm (0.018/0.014inch)	Polymer jacket 150cm / Hydrophilic coating (SLIP-COAT®) 170cm	200cm	34cm	5cm	Round curve

Manufactured by:

ASAHI INTECC

ASAHI INTECC CO.,LTD.



VirtuMED

www.virtumed.org/chikafamily