



High Win

INDUSTRIES



Mfg of all Type Flexible Coupling



Rohit Patel : 98242 53356

Our Team

Established in the year **2007**, We **HIGHWIN GROUP** are a distinguished name in the domain of **Manufacturers, Suppliers, Exporters & Importers** of a highly acclaimed range of **Flexible Coupling**.

Our Mission



We are backed by a team of competent and diligent professionals having immense knowledge and years of experience in their respective domains sharing all the available resources for producing best quality products, consistently.



Being a team with culture of excellence and seeking to always improve on ourselves.

To always strive upon quality and service to our customers, helping them achieve the goal of producing the best and economical products with Zero tolerance.



To provide our customers the best quality products and surpass their expectations. Sourcing products and innovative management practices to stay ahead in today's global economic conditions.

Mission

Quality



Quality checking is one of the important aspects of our organization. With well-equipped laboratory and stringent quality check measures we ensure to provide world class quality products.

Encoder Coupling



The Coupling Is Curved Drum Cut Into Single Homogenous Piece Of Material. It Transmits Torque As Compression Or Tension Yet Is Laterally Flexible And Torsionally Rigid.

Dosing factors for rotating Shaft Flexible Coupling.

The coupling may operate at Low or High Speed.

Constant Velocity and angular accuracy are assured as the driven hub turns the same as the

driven hub turns the same as the driving hub.

Zero backlash in the coupling

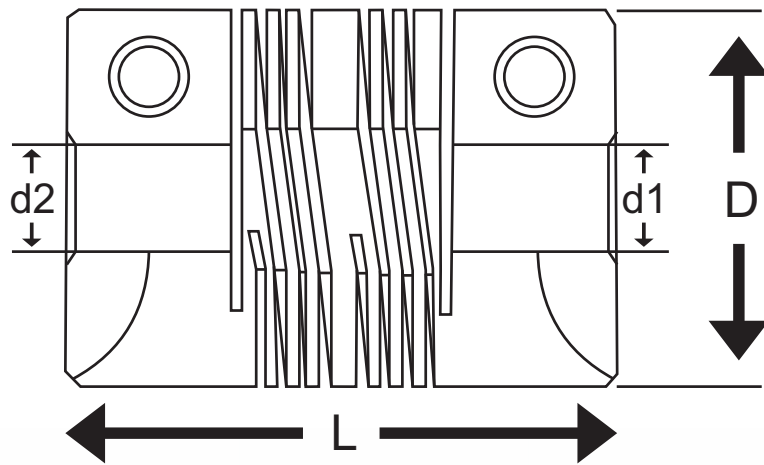
Features :-

- One piece construction.
- Aluminum alloy - anodizes.
- Angular offset up to 3 Deg.
- Parallel offset up to 0.6mm.
- No backlash.
- Constant velocity transmission.
- Torsionally rigid.
- Set screw & hub type.

Application :-

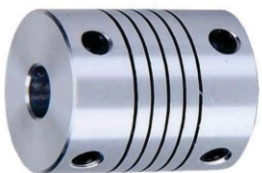
- Shaft Encoder
- Tachogenerator
- Potentiometers And Variacs
- Stepper And Synchronous Motor.
- Damper Drives
- Rotary Position Transmitter
- Material Handling System
- Testing And Measuring Instruments.

Application :-



Technical Data:-

Model	"D" Outer Diameter	"D1" Bore Diameter	"D2" Bore Diameter	"L" Length	Clamping Screws	Angular Degree	Torque nm
25-6-6-32	25	6	6	32	M3	4	2.5
25-6-8-32	25	6	8	32	M3	4	2.5
25-6-10-32	25	6	10	32	M3	4	2.5
25-10-10-32	25	10	10	32	M3	4	2.5
25-8-8-32	25	8	8	32	M3	4	2.5
25-8-10-32	25	8	10	32	M3	4	2.5
28-14-10-35	28	10	14	35	M3/M4	4	3.5



We Provide Special Purpose Coupling As Required By Client

Disc Coupling



Small- and medium-capacity model, which is made of a high-strength aluminum alloy and whose outer hub diameter is linked to the shaft diameter to achieve a ultra-low inertia ideal for high-speed rotation. Three different shapes are available depending on the combination of bore diameters you use. Disc Couplings are made with Disc Set and Aluminium Hubs for clamping. These Discs are bolted alternately to the Aluminium Hubs from both sides of Disc Sets. Disc Flexible Coupling (DFC) the three or five pieces' assembly of B no. Aluminium or C no. Aluminium hubs and A no. or B no. of Stainless Steel Disc sets. These three or five parts are assembled with bolts with precision. This assembly becomes a Backlash Free and High Torsional Stiff, precise, long life Disc Coupling.



Features :-

- High Stiffness And Ultra-low Inertia
- Simple And Reliable Connection
- Wide Variety Of Options

Application :-

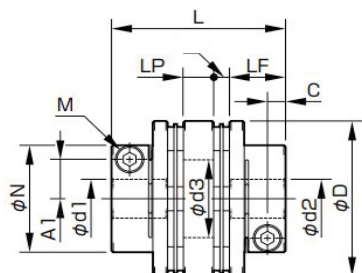
- Nc Lathe
- Machining Center
- Chip Mounter
- Actuator
- Machine tool
- printing press
- packing machine
- coater/coating machine



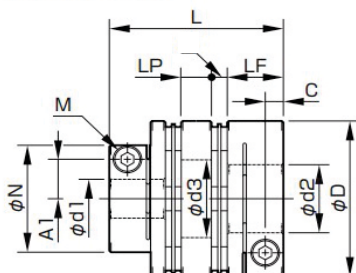
Double Disc Coupling

Application :-

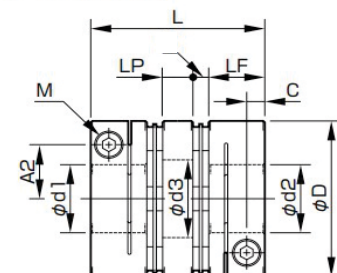
■ TYPE A



■ TYPE B



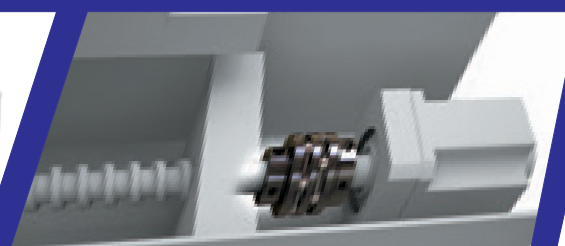
■ TYPE C



Technical Data:-

Model	Type	D1 Min-Max	D2 Min-Max	D	L (mm)	N	LF (mm)	LP (mm)	A1 (mm)	A2 (mm)	C	M Qty-Nominal Dia.	Torque nm	Tightening Torque nm	Maximum Rotate Speed	Parallel	Angular
D3-31-37.5	C	0	5-14	31	37.5	-	12	-	-	-	-	1-M3	4	1~1.2	10000	0.16	1
D3-35-38	C	0	5-16	35	38	-	12.4	8.2	-	12	3.5	1-M3	5	1.5~1.9	10000	0.2	1
D3-40-48	C	0	6-19	40	48	-	15	10	-	13.75	4.5	1-M4	10	1.5~2	10000	0.24	1
D3-46-51	A	6-15	6-15	46	51	31.5	15	11	11.5	-	4.3	1-M4	12	3.4~4	10000	0.24	1
D3-46-51	B	6-15	6-24	46	51	31.5	15	11	11.5	17	4.3	1-M4	12	3.4~4	10000	0.24	1
D3-46-51	C	0	6-24	46	51	-	15	11	-	17	4.3	1-M4	12	3.4~4	10000	0.24	1
D3-58-63	A	6-19	6-19	58	63	40	20.7	14.6	14	-	5.75	1-M5	25	7~8.5	10000	0.28	1
D3-58-63	B	6-19	10-30	58	63	40	20.7	14.6	14	22	5.75	1-M5	25	7~8.5	10000	0.28	1
D3-58-63	C	0	10-30	58	63	-	20.7	14.6	-	22	5.75	1-M5	25	7~8.5	10000	0.28	1
D3-69-78	A	8-24	8-24	69	78	48	26	16	17	-	7.3	1-M6	60	14~15	10000	0.34	1
D3-69-78	B	8-24	10-35	69	78	48	26	16	17	26.5	7.3	1-M6	60	14~15	10000	0.34	1
D3-69-78	C	10-35	10-35	69	78	-	26	16	-	26.5	7.3	1-M6	60	14~15	10000	0.34	1
D3-85-97	C	0	15-45	85	97	-	30.2	22.2	-	29.5	8.8	1-M8	100	27~30	10000	0.52	1
D3-95-98	C	0	15-45	95	98	-	30.2	22.2	-	35	8.8	1-M8	180	27~30	10000	0.52	1
D3-107-103	C	0	15-50	104	103	-	30.2	22.2	-	40.5	9.3	1-M8	250	27~30	10000	0.55	1

Used Sector :-



General-purpose Feed Shaft

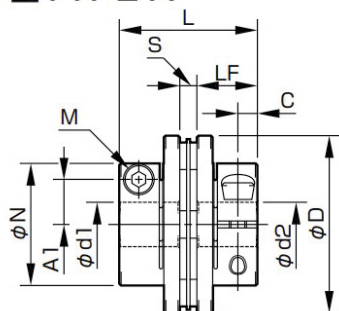
CNC Lathe

Chip Mounter

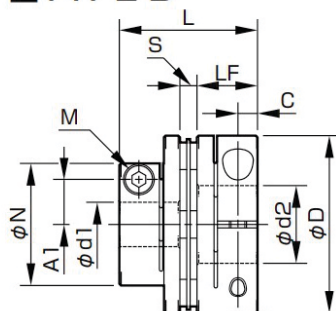
Single Disc Coupling

Application :-

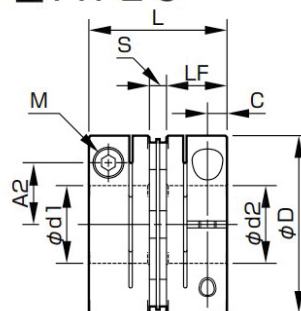
■ TYPE A



■ TYPE B



■ TYPE C



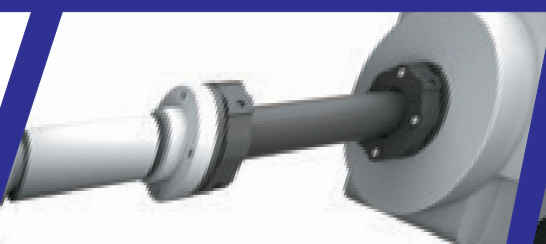
Technical Data:-

Model	Type	D1 Min-Max	D2 Min-Max	D	L (mm)	N	LF (mm)	A1 (mm)	A2 (mm)	C	M Qty-Nominal Dia.	Torque nm	Tightening Torque nm	Maximum Rotate Speed	Parallel	Angular
D2-31-27	C	0	5-14	31	27	-	12	-	-	-	1-M3	4	1~1.2	10000	0.02	1
D2-35-27.5	C	0	5-16	35	27.5	-	12.4	-	12	3.5	1-M3	5	1.5~1.9	10000	0.02	1
D2-40-36	C	0	6-19	40	36	-	15	-	13.75	4.5	1-M4	10	1.5~2	10000	0.02	1
D2-46-36	A	6-15	6-15	46	36	31.5	15	11.5	-	4.3	1-M4	12	3.4~4	10000	0.02	1
D2-46-36	B	6-15	6-24	46	36	31.5	15	11.5	17	4.3	1-M4	12	3.4~4	10000	0.02	1
D2-46-36	C	0	6-24	46	36	-	15	-	17	4.3	1-M4	12	3.4~4	10000	0.02	1
D2-58-42	A	6-19	6-19	58	42	40	20.7	14	-	5.75	1-M5	25	7~8.5	10000	0.02	1
D2-58-42	B	6-19	10-30	58	42	40	20.7	14	22	5.75	1-M5	25	7~8.5	10000	0.02	1
D2-58-42	C	0	10-30	58	42	-	20.7	-	22	5.75	1-M5	25	7~8.5	10000	0.02	1
D2-69-57	A	8-24	8-24	69	57	48	26	17	-	7.3	1-M6	60	14~15	10000	0.02	1
D2-69-57	B	8-24	10-35	69	57	48	26	17	26.5	7.3	1-M6	60	14~15	10000	0.02	1
D2-69-57	C	10-35	10-35	69	57	-	26	-	26.5	7.3	1-M6	60	14~15	10000	0.02	1
D2-85-68	C	0	15-45	85	68	-	30.2	-	29.5	8.8	1-M8	100	27~30	10000	0.02	1
D2-95-68.5	C	0	15-45	95	68.5	-	30.2	-	35	8.8	1-M8	180	27~30	10000	0.02	1
D2-104-70	C	0	15-50	104	70	-	30.2	-	40.5	9.3	1-M8	250	27~30	10000	0.02	1

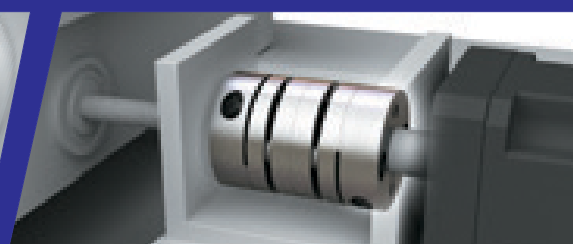
Used Sector :-



Vacuum Pump



Pleasure Boat



Dicing Saw



Our Address / Presence



High Win
INDUSTRIES

27, Siddhi Estate,

Panna Estate Road, N.H.-8,

Nr. Sonini Chal, Odhav, Ahmedabad,

Gujarat, India-380024.



couplingindia@gmail.com



Contact Now :
98242 53356