

# JUPITER TRADE LINK

Registered Office:

Room No. 333 | Rangoli Mall Office Unit | 212, Girish Ghosh Road | Belur | Howrah |  
West Bengal | India | Pin - 711 202

Works:

Thakurani Chowk | Samabaypally | Bamandanga | Bally | Howrah |  
West Bengal | India | Pin - 711 205

Mobile: +91- 9681226821 | e-mail: [jupiter.piyush@gmail.com](mailto:jupiter.piyush@gmail.com)  
[www.jupitertradelink.com](http://www.jupitertradelink.com)

---

## COMPANY PROFILE

Established in the year 2017, an ISO 9001:2015 Certified Company is a Sole Proprietorship based firm, we "Jupiter Trade Link", is engaged in manufacturing and supplying the finest quality Railway Track Fittings, Railway Accessories and Allied Products. We are having specialization in manufacturing of Steel Channel Sleepers and H-Beam Sleepers for Railway Bridges. We are also engaged in manufacturing of Steel Fittings for Railways Tracks and Steel Channel & H-Beam Sleepers, i.e. Tapered Washer, T Head Bolt, M. S. Clip, Hook Bolt, Split Pin, Square Head Bolt and many more. These products are planned and fabricated from high review crude material that is sourced from solid and confirmed merchants of the business. Offered products are fabricated as per the requirements of the clients with characterized industry guidelines under the supervision of our quality specialists. These products are accessible in distinctive details according to the needs of customers. Further, these products are profoundly increased in value by our customers for its traits like vigorous development, exactness building, minimal configuration, erosion safety, strength and more administration life.

In the direction of our Proprietor, 'Mr. Piyush Kumar Saraf', we can cheer the stature of believable association in this space. Their administration abilities, information and visionary persona are elements that have empowered us to contend in the business sector and abandon our partners far. We have created an immense framework, spread over an immeasurable territory at Howrah, West Bengal, India and is furnished with all the obliged engineering and obliged conveniences. Accessibility of advanced hardware has constantly underpinned us in giving exquisite products to the customers. Our group assumes ownership taking care of the framework and put all the exertions in accomplishing most elevated amount of customer fulfilment. For the same, group makes utilization of simple method for transportation and conveys the extent at benefactors' premises inside decided beforehand timeline.

We are in business connection with fitting consideration regarding our client from most recent 5 years for the accompanying trams as under Manufacture of steel channel sleepers, different varieties of channel sleepers. We are competent for the assembling of ducking Trusses, High Mast, throwing materials at any sort of Fabrication and Machining Jobs according to our esteemed clients Drawings and particulars. Jupiter Trade Link was built with a dream to render world class exactness designing products, Jupiter Trade Link has left on a fruitful trip and has made its unparalleled vicinity felt in the Railway Track Fittings industry. The organization, consolidated in the year 2017, is figured as a leading maker of a mixture of building products and Railway Track Fittings parts. Our quality is included amongst the best of the business, since we have utilized a gifted workforce. Our product run is respected for its complete and productivity by our customers, since our products effortlessly pass thorough quality standards.

For systematic, efficient and timely execution of all our business processes we have appointed a team of sincere and skilled professionals. Mastering in their respective areas, these professionals are well versed with the pros and cons of this industry. Further, the professionals of our organization strive to maintain a healthy relationship with the clients, which help us in understanding the clients' exact requirements and offer products accordingly. Owing to the customer-centric approach, high standard products and diligent team of professionals, we have been able to stay ahead of our counterparts.

Our R&D capability aids, in this instrument by their commitment of reaction and business sector investigation. The entire assembling methodology happens under the strict supervision of qualified designers and quality control personnel's. We practice stringent quality and solidness scouts all our products at all phases of generation. Our R&D is continually included in making new products to suit the expanding requests of the cutting-edge times. We are really avid to make great business connection.

We are very much eager to establish good business relation.



## : Basic Information :

Company Name	:	<b>Jupiter Trade Link</b>
Proprietor	:	Piyush Kumar Saraf
GSTIN No.	:	19AJWPS8408H2ZA
PAN No.	:	AJWPS8408H2ZA
TAN No.	:	CALP16853E
Registered Office	:	#333, 3 <sup>rd</sup> Floor, 212, Girish Ghosh Road, Belur, Howrah - 711 202. W.B.
Works – I	:	Thakurani Chowk, Samabaypally, Bamandanga, Bally, Howrah–711205. W.B.
Works – II	:	39/9, Makardah Road, Kadamtala, Howrah – 711101. W.B.
Contact Number	:	9681226821
e-mail	:	jupiter.piyush@gmail.com
Nature of Business	:	Manufacturing & Trading
Industry	:	Manufacturing & Trading of Railway Track Fittings
Total Number of Employees	:	15 to 20 People
Year of Establishment	:	2017
Certifications	:	ISO 9001:2015 (Valid Till April 25 <sup>th</sup> 2027)
Legal Status of Firm	:	Individual Proprietor
Key Customers	:	<ul style="list-style-type: none"><li>○ Ircn International Ltd., Western Region</li><li>○ Indian Railways, Trivandarum Division, Kerala</li><li>○ D. B. Powers Limited – Chattisgarh</li><li>○ Konkan Railway Corporation Ltd. (KRCL) - Madgaon</li><li>○ Adani Forwarding Agents Pvt. Ltd.– ICD Tumb, Vapi</li><li>○ Prominent Railway Contractors of Indian Railway based all over India for Track Works.</li></ul>



# CATALOGUE

## Ω GALVANISED H-BEAM SLEEPERS Ω



## Ω GALVANISED STEEL FITTINGS FOR H-BEAM SLEEPERS Ω



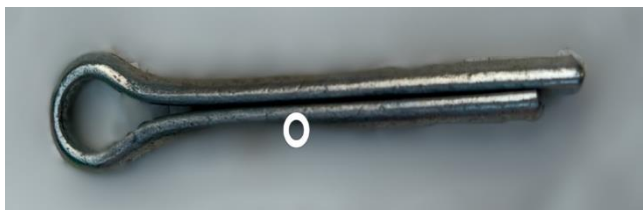
HOOK BOLT : DIA 28mm & 22mm (Length as per Site Condition)



TAPPER WASHER : T-5161 & T-5162



GUARD RAIL BOLT & NUT : T-5164



TAPPERED SPLIT PIN

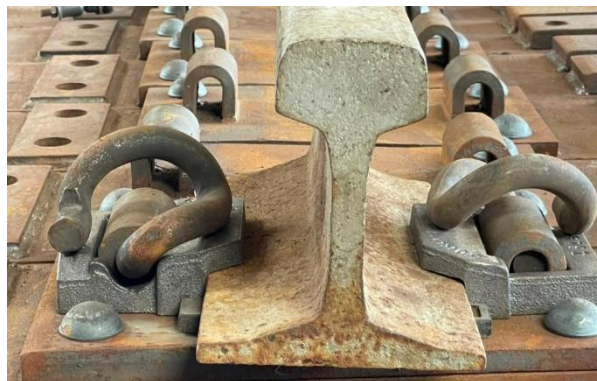


SINGLE COIL SPRING WASHER T-10773

**Ω RUBBER FITTINGS FOR H-BEAM SLEEPERS Ω**



**Ω ZERO TOE LOAD FITTINGS FOR H-BEAM SLEEPERS Ω**



**ZERO TOE LOAD FITTING :**

- INNER & OUTER LINER
- ERC T-3701
- STEEL EMBEDDED RUBBER PAD

**Ω GALVANISED STEEL CHANNEL SLEEPERS Ω**



**Ω GALVANISED CUT BLOCK STEEL CHANNEL SLEEPERS Ω**



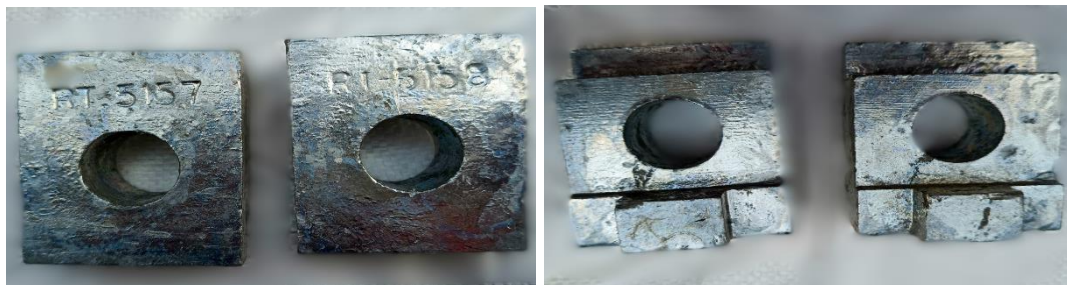
**Ω RUBBER FITTINGS FOR STEEL CHANNEL SLEEPERS Ω**



**Ω GALVANISED STEEL FITTINGS FOR STEEL CHANNEL SLEEPERS Ω**



**Ω GALVANISED STEEL FITTINGS FOR STEEL CHANNEL SLEEPERS - DETAILED Ω**



**GALVANISED MS CLIP T-5157 & T-5158**



**GALVANISED ANNULAR CAP T-5159**

**GALVANISED PLAIN WASHER 8MM**



**GALVANISED T-HEAD BOLT & NUT T-5160**



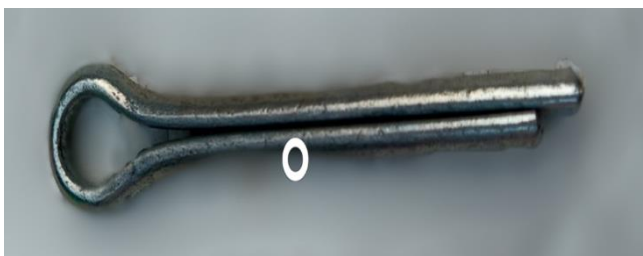
**TAPPER WASHER : T-5161 & T-5162**



**GUARD RAIL BOLT & NUT : T-5164**



**HOOK BOLT : DIA 28mm & 22mm (Length as per Site Condition)**



**TAPPERED SPLIT PIN**



**SINGLE COIL SPRING**

**WASHER T-10773**



**Ω CAST IRON (C.I.) BEARING PLATE & FITTINGS for 52 & 60 Kgs PIT LINE Ω**



**Ω CONSUMABLE FOR PIT LINE C.I. BEARING PLATE Ω**



**GROOVED RUBBER PAD 12mm & 6mm**



**ANCHOR STUD BOLT & POLYTHENE INSERT SPIRAL**



**PUNCHED WASHER**



**TRIPLE COIL SPRING WASHER**



**NYLON FERRULE**