

SATYAM BUILDTech

All Gabion Products



Weaving Wires Into Quality & Trust

- 📍 **Office :**
A-1203, Empire Business Hub,
Nr. Shukan Mall, Sola-Science City Road,
Sola, Ahmedabad-380060
- 📞 Shivam Patel - 9825136863
- ✉ E-mail : info@satyambuildtech.com
- 🌐 Website : www.satyambuildtech.com

- 📍 **Industries :**
Survey No - 526, Nr. Safrony College,
Village Dholasan, Mehsana-Ahmedabad
Highway, Mehsana-382705
Phone - 98251 32863



ABOUT US :

- Satyam buildtech was established in 2006 in mehsana, gujarat, india
- We introduce our self as leading manufacturer, supplier & exporter of gabion box/mesh, weldmesh, chainlink fence, crimped net, barbed wire, concertina wire in india & abroad.
- Our products are made from the highest quality wire which ensures maximum strength durability & quality of our products.
- We offer most competitive prices with zero percent compromise on quality of products.

INDUSTRY DETAILS :-

In this modern era, our industry has mastered manufacturing quality by utilizing advanced technology machinery with highly experienced staff our industry is equipping 18000 sq.mt land area in well developed industrial region.



What Is Gabion ?

Basically it is cage made by hexagonal woven wire mesh that can be filled with rocks or other inert material which builds a solid gabion structure used for various eco friendly construction purpose.

Application :



Gabion Box :-

Gabion box is made by double twisted wire mesh container which can be filled with rocks or other inert material. They are widely use for canal, river & coastal protection to avoid soil / sand erosion gabion boxes are flexible as well as durable with high strength factor in it they are available in G.I. coating & PVC coating.



Gabion Wall :-

Gabion wall are gravity structure that are considerably strong, flexible, environmentally friendly & cost effective. The gabion wall helps to retain structure & avoid landslides in mountain region & flood prone area. They are available in G.I. coating & PVC coating



Gabion Mattresses :-

Gabion mattress is made of different materials including galvanized steel wire & PVC coated steel wire. Gabion mattresses are used to slow down river flow to avoid soil erosion of fertile landscape near river bank. These structure are rigid solid & has decent flexibility which ensures long life of the gabion mattresses in harshest environment.

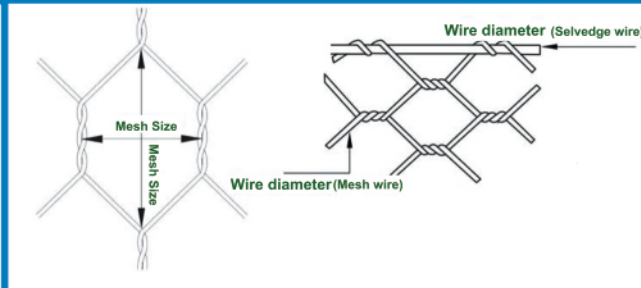
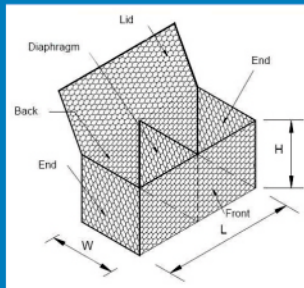


Rockfall Netting :-

The rockfall netting is done by using G.I. wire & PVC coated wire. It is commonly used for rock retention over the mountain areas to prevent rock fall, thus minimizing loss of property or life in worst environmental conditions like landslides, earth quake, heavy rainfall etc..



Specification :



Mesh Size (in mm)	Mesh Wire (in mm)		Selvedge Wire (in mm)		Box Size (in Meter)		
	Coating	Diameter	Coating	Diameter	Length	Width	Height
80x100	G.I.	2.4 2.7 3.0	G.I.	3.0 3.4 3.9	1 to 5	1 to 2	0.5 to 1
	GI + PVC	2.4/3.4 2.7/3.7 3.0/4.0	GI + PVC	3.0/4.0 3.4/4.4 3.9/4.9			
100x120	G.I.	2.4 2.7 3.0	G.I.	3.0 3.4 3.9	1 to 5	1 to 2	0.5 to 1
	GI + PVC	2.4/3.4 2.7/3.7 3.0/4.0	GI + PVC	3.0/4.0 3.4/4.4 3.9/4.9			

- G.I. Coating upto 275 GSM
- Partitions are at every meter in the box
Example : GI + PVC=3.0/4.0 → internal diameter of GI Wire / external Diameter of GI + PVC coated wire
- Box dimension can be modified as per your choice

History of gabion at a glance :-

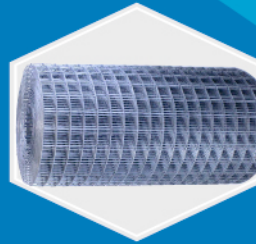
Thousands of year ago gabion type structure were used by nomadic tribes of africa to project the river banks of their locality as the time passed in mid - 18 century gabin were employed as military protection wall during the war time in recent history civil engineers have used gabion extensively to stabilize riverbanks highways & mountain region against soil/sand erosion.

Our happy client :-

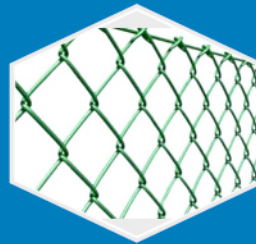
L&t, Essar construction, PMC project, Reliance (Jamnagar)
Ultratech, Welspun, AFFCONS Infrastructure, NTPC, Hindustan Construction, J.M.C Projects & many more.

Other Quality Products Manufactured by us

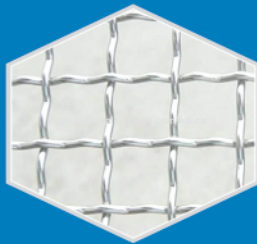
Weldmesh (GI/MS)



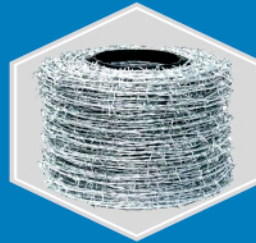
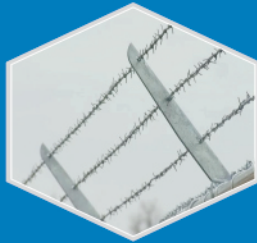
Chainlink Fence (GI/PVC)



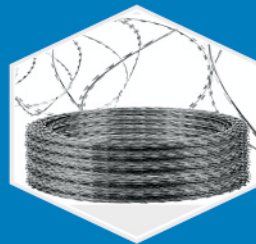
Crimped Net (GI/MS)



Barbed Wire



Concertina wire



Weldmesh Gabion Box



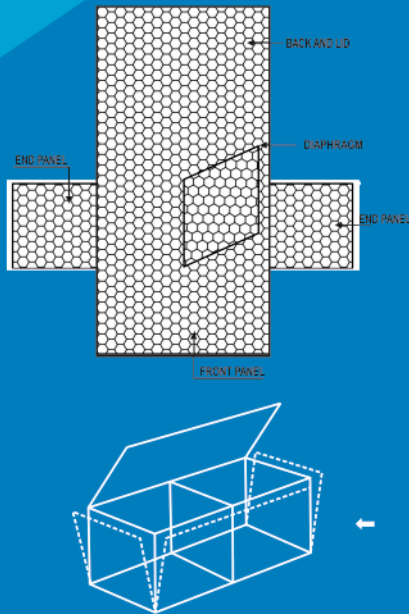
How to use Gabion Box :

Assembly

Unpack the gabions which are supplied in bundles of two, whatever their size (enough binding wire is supplied with all gabions delivered.)

Unfold each gabion on a hard, flat surface. Stretch it out and stamp out any kinks. Make sure that all creases are in the correct positions for Forming the box one at the edge of each end panel and each diaphragm.

Fold the side and end panels into the upright position to form a rectangular box. Join the top corners of the box together with the thick selvedge wire sticking out from the corners of each panel. This makes sure that the tops of all four sides of the box are level.



Begin wiring up by securing the binding wire at the top corners of the panels to be joined by looping it through and twisting it together.

Then lace the wire around the selvages with single loops and double loops in turn at 100 mm (4 in) intervals.

Finally, fasten the wire securely at the bottom corner, and poke the loose end inside the gabion. Next, lift the diaphragms in to the vertical position, and wire them up to the side panels in exactly the same way.

Satyam buildtech & our sister firm's registration & works

