



	Wheel dia (mm)	Tread width (mm)	Load capacity (kg.) Per Pc.	Loading height (mm)	Wheel material	Swivel radius (mm)	Brake swivel radius (mm)	Bearing	Plate size (mm)	NO. Model
<p>IV-10-FX-100-PU-G</p>	100 (4")		200	135		87	125			IV10-H-FX-100-PU-G
										IV10-H-PL-100-PU-G
										IV10-H-PK-100-PU-G
										IV10-H-WH-100-PU-G
<p>IV-10-PL-150-PU-G</p>	150 (6")	50	300	185	Polyurethane (PU)	121	136	<p>Double Ball Bearing</p>	(A) 92x67 (B) 114x98 (C) 76x76 (D) 11	IV10-H-FX-150-PU-G
										IV10-H-PL-150-PU-G
										IV10-H-PK-150-PU-G
										IV10-H-WH-150-PU-G
<p>IV-10-PK-200-PU-G</p>	200 (8")		350	232		160	157			IV10-H-FX-200-PU-G
										IV10-H-PL-200-PU-G
										IV10-H-PK-200-PU-G
										IV10-H-WH-200-PU-G
<p>IV-20-PL-100-TPR-G</p>	100		150	143		84	125			IV20-FX-100-TPR-G
										IV20-PL-100-TPR-G
										IV20-PK-100-TPR-G
										IV20-WH-100-TPR-G
<p>IV-20-PK-150-TPR-G</p>	150	50	200	190	TPR GREY	121	136	<p>Double Ball Bearing</p>	(A) 92x67 (B) 114x98 (C) 76x76 (D) 11	IV20-FX-150-TPR-G
										IV20-PL-150-TPR-G
										IV20-PK-150-TPR-G
										IV20-WH-150-TPR-G
<p>IV-20-FX-150-TPR-G</p>	200		250	240		160	157			IV20-FX-200-TPR-G
										IV20-PL-200-TPR-G
										IV20-PK-200-TPR-G
										IV20-WH-200-TPR-G

	Wheel dia (mm)	Tread width (mm)	Load capacity (kg.) Per Pc.	Loading height (mm)	Wheel material	Swivel radius (mm)	Brake swivel radius (mm)	Bearing	Plate size (mm)	NO. Model	
<p>IV-13-PL-150-SRT-BR</p>	100	50	130	143		84	125			IV-13-FX-100-SRT-BR	
										IV-13-PL-100-SRT-BR	
										IV-13-PK-100-SRT-BR	
										IV13-WH-100-SRT	
<p>IV-13-PK-150-SRT-BR</p>	150	50	200	190	FOAM RUBBER	121	136	<p>Double Ball Bearing</p>	(A) 92x67 (B) 114x98 (C) 76x76 (D) 11	IV-13-FX-150-SRT-BR	
										IV-13-PL-150-SRT-BR	
										IV-13-PK-150-SRT-BR	
										IV13-WH-150-SRT	
<p>IV-13-FX-200-SRT-BR</p>	200	50	250	240		160	157			IV-13-FX-200-SRT-BR	
										IV-13-PL-200-SRT-BR	
										IV-13-PK-200-SRT-BR	
										IV13-WH-200-SRT	
	Wheel dia (mm)	Tread width (mm)	Load capacity (kg.) Per Pc.	Loading height (mm)	Wheel material	Swivel radius (mm)	Brake swivel radius (mm)	Bearing	Plate size (mm)	NO. Model	
<p>IV13-H-PL-260-PRT</p>	200 (8")	50	120	255	Pneumatic Tyre	151		<p>Double Ball Bearing</p>	(A) 92 X 67 (B) 114 X 98 (C) 76 X 76 (D) 11	IV13-H-PL-200-PRT	
		85	150	295		187				IV13-H-PL-260-PRT	
		85	150	295		187				IV13-H-WH-200X50-PRT	
<p>IV13-H-FX-200-PRT</p>	260 (10")	50	120	255	Pneumatic Tyre			<p>Double Ball Bearing</p>	(A) 92 X 67 (B) 114 X 98 (C) 76 X 76 (D) 11	IV13-H-FX-200-PRT	
		85	150	295						187	IV13-H-FX-260-PRT
		85	150	295						187	IV13-H-WH-260X85-PRT



TPR caster with PP core

PRODUCT	 Wheel dia (mm)	 Tread width (mm)	 Load capacity (kg)	 Wheel material	 Loading height (mm)	 Swivel radius (mm)	 Thread size (mm)	 Stem size (mm)	NO. Model	
	100 (4")	32	80	Nylon fork + Thermoplastic Rubber (TPR)	139	39	THREAD M 12 X 25		IV15-L-TH-100-TPR-G	
									IV15-L-TK-100-TPR-G	
									STEM Ø22X45	
									IV15-L-SK-100-TPR-G	
	125 (5")	32	100	Nylon fork + Thermoplastic Rubber (TPR)	169	44	THREAD M 12 X 25		IV15-L-TH-125-TPR-G	
									IV15-L-TK-125-TPR-G	
									STEM Ø22X45	
									IV15-L-SK-125-TPR-G	
	100 (4")	27	80	Thermoplastic Rubber (TPR)	131.5	37	THREAD M 12 X 25		IV33-L-TH-100-TPR-G	
									IV33-L-TK-100-TPR-G	
									STEM Ø22X45	
									IV33-L-SK-100-TPR-G	
	125 (5")	32	110	Thermoplastic Rubber (TPR)	160	41	THREAD M 12 X 30		IV34-L-TH-125-TPR-G	
	150 (6")		130		184.50				36	IV34-L-TK-125-TPR-G
			IV34-L-TH-150-TPR-G							
	IV34-L-TK-150-TPR-G									
	125 (5")	32	110	Thermoplastic Rubber (TPR)	160	41	STEM Ø22X45		IV34-L-ST-125-TPR-G	
	150 (6")		130		184.50				36	IV34-L-SK-125-TPR-G
			IV34-L-ST-150-TPR-G							
	IV34-L-SK-150-TPR-G									



IV33-35 Series



IV33-TW-PL50-TPR-G



IV33-TW-PK75-TPR-G

Wheel dia(mm)	Wheel material	Tread width (mm)	Load Capacity (kg.) Per Pc.	Load Height (mm)	Bearing	Plate Size (mm)	NO. Model
50(2")	Thermoplastic Rubber Grey (TPR)	20	90	71	Single Ball Bearing	(A) 43x43	IV33-TW-PL50-TPR-G
						(C) 60x60	IV33-TW-PK50-TPR-G
75(3")	Thermoplastic Rubber Grey (TPR)	25	150	103	Single Ball Bearing	(A) 51x41	IV33-TW-PL75-TPR-G
						(C) 66x54	IV33-TW-PK75-TPR-G

	Wheel dia (mm)	Tread width (mm)	Load capacity (kg.) Per Pc.	Loading height (mm)	Wheel material	Swivel radius (mm)	Plate size (mm)	Bearing	Plate size (mm)	NO. Model
	160	50	300	190	BLACK ELASTIC RUBBER	121	(B) 115 X 100	Double Ball Bearing	(A) 92 X 67 (C) 76 X 76 (D) 11	IV35-F-FX-160-R
										IV35-F-PL-160-R
	200	50	400	240		160				IV35-F-FX-200-R
										IV35-F-PL-200-R
	125		150		BLACK ELASTIC RUBBER	Bearing 6203		Double Ball Bearing		IV35-F-WH-125-R
	160		200			Bearing 6205				IV35-F-WH-160-R
	200	50	300							IV35-F-WH-200-R
	250		400							IV35-F-WH-250-R

Rubber loose wheel with steel core with roller bearing

PRODUCT	Wheel dia (mm)	Wheel material	Tread width (mm)	Load capacity (kg.) Per Pc.	Bore Size MM	NO. Model
 A B C	160	Natural Rubber	39	100	6203	IV36A-WH-160-R
	200		45	160	6205	IV36A-WH-200-R
	250		45	180	6205	IV36A-WH-250-R



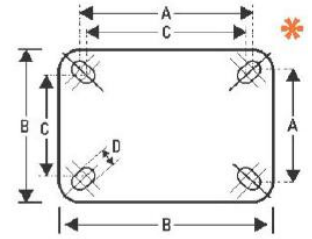
IV77-FX-75-PP-M



IV77-PL-100-PP-M



IV77-PK-150-PP-M



Wheel Dia (mm)	Tread Width (mm)	Load Capacity (kg.) Per Pc.	Wheel Material	Loading Hight (mm)	Swivel Radius (mm)	Brake Swivel Radius (mm)	Bearing	Plate size (mm)	NO. Model
75 (3")	38	160	Polypropylene (PP)	111	70	117	 Double Ball Bearing	(A) 80x60 (B) 101x82 (C) 73x53 (D) 11	IV77-FX-75-PP-M
									IV77-PL-75-PP-M
									IV77-PK-75-PP-M
100 (4")	38	200	Polypropylene (PP)	136	86	122	 Double Ball Bearing	(A) 80x60 (B) 101x82 (C) 73x53 (D) 11	IV77-FX-100-PP-M
									IV77-PL-100-PP-M
									IV77-PK-100-PP-M
150 (6")	38	280	Polypropylene (PP)	190	120	139	 Double Ball Bearing	(A) 80x60 (B) 101x82 (C) 73x53 (D) 11	IV77-FX-150-PP-M
									IV77-PL-150-PP-M
									IV77-PK-150-PP-M



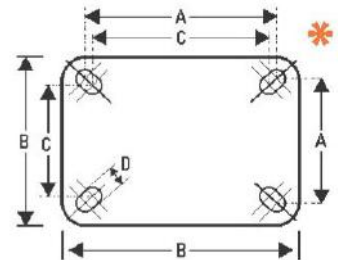
IV44-SS-FX-80-PU-R



IV44-SS-PL-100-PU-R



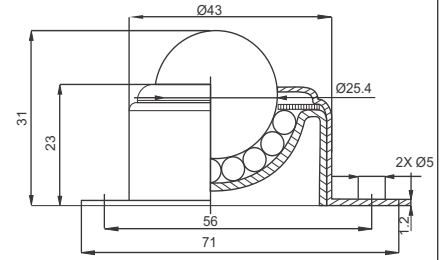
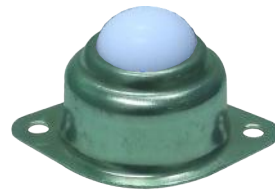
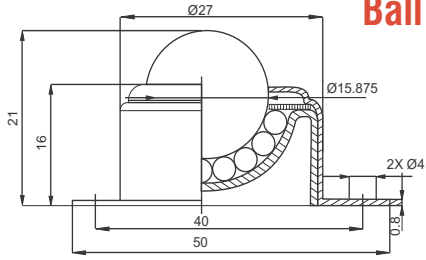
IV44-SS-PK-80-PU-R



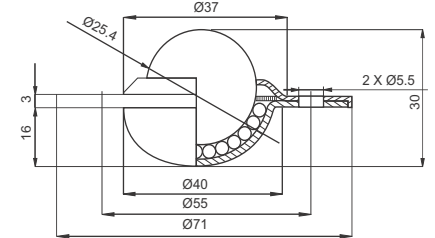
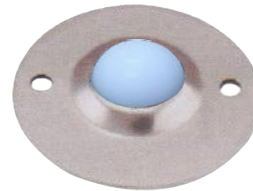
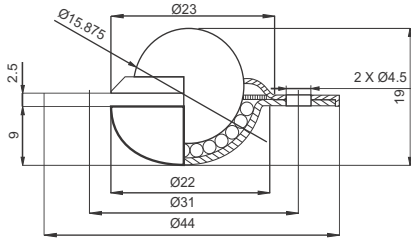
Wheel dia (mm)	Tread width (mm)	Load capacity (kg.) Per Pc.	Wheel material	Loading height (mm)	Swivel radius (mm)	Brake swivel radius (mm)	Plate size (mm)	Bearing	NO. Model
80 (3.2")	30	90 kg	Polyurethane PU	106	37.5	117	(A) 80x60 (B) 101x82 (C) 73x53 (D) 11	 S.S Roller Bearing	IV44-SS-FX-80-PU-R
									IV44-SS-PL-80-PU-R
									IV44-SS-PK-80-PU-R
100 (4")	30	110 kg	Polyurethane PU	127.5	40	122	(A) 80x60 (B) 101x82 (C) 73x53 (D) 11	 S.S Roller Bearing	IV44-SS-FX-100-PU-R
									IV44-SS-PL-100-PU-R
									IV44-SS-PK-100-PU-R

PRODUCT	Wheel Material	Wheel Dia (mm)	Tread Width (mm)	Load Capacity (kg)Pc.	Bearing	Inner Size (mm)	Outer Size (mm)	NO. Model
	C.I. + PU	82mm (3.2")	70	500	6204 Without Ball Bearing	47	20	IV-PU-ROLLER-82 X 70
	C.I. + PU	180 (7")	50	600	6204 Without Ball Bearing	47	20	IV-PU-WHEEL-180 X 50

Ball Transfer Unit



Wheel dia(mm)	Load Capacity (kg.) Per Pc.	Max 100 Kg.	Product Self Weight	NO. Model
15.875	10	15	38g	IV-BT-FL-15 IV-BT-FL-15-NY
25.40	25	30	130g	IV-BT-FL-25 IV-BT-FL-25-NY



Wheel dia(mm)	Load Capacity (kg.) Per Pc.	Product Self Weight	NO. Model
15.875	10	40g	IV-BT-CL-15 IV-BT-CL-15-NY
25.40	25	150g	IV-BT-CL-25 IV-BT-CL-25-NY

TPR Ball caster with PP core, Plain Bearing CP housing

PRODUCT	Wheel dia (mm)	Tread width (mm)	Load capacity (kg)	Wheel material	Loading high (mm)	38x38	27x27	NO. Model
	40 (1.5")		30	Thermoplastic Rubber (TPR)	52	38x38	27x27	IV-BC-PL40-TPR
	50 (2")		40	Thermoplastic Rubber (TPR)	60	40x40	30x30	IV-BC-PL50-TPR



IV31-FX-75-R



IV31-ST-100-R



IV31-PK-150-R



IVWH-IV31-100 R

Wheel dia (mm)	Tread width (mm)	Load capacity (kg.) Per Pc.	Wheel material	Loading hight (mm)	Swivel radius (mm)	Brake swivel radius (mm)	Plate size (mm)	Stem size (mm)	Bearing Roller Bearing	NO. Model
75 (3")	20	50	Natural Rubber	99	32		(A) 62X52 (B) 84X72X2.5 (C) 6.3		Roller Bearing	IV31-FX-75-R
										IV31-PL-75-R
										IV31-PK-75-R
										IV31-WH-75-R
100 (4")	30	80	Natural Rubber	128	40		(A) 76X56 (B) 105X85X3 (C) 9	STEM 22ØX45 MM	Roller Bearing	IV31-FX-100-R
										IV31-PL-100-R
										IV31-PK-100-R
										IV31-ST-100-R
										IV31-SK-100-R
IV31-WH-100-R										
125 (5")	38	100	Natural Rubber	150	47		(A) 76X56 (B) 105X85X3 (C) 9	STEM 22ØX45 MM	Roller Bearing	IV31-FX-125-R
										IV31-PL-125-R
										IV31-PK-125-R
										IV31-ST-125-R
										IV31-SK-125-R
IV31-WH-125-R										
150 (6")	40	145	Natural Rubber	185	65		(A) 103X78 (B) 140X110X3.5 (C) 10	STEM 22ØX45 MM	Roller Bearing	IV31-FX-150-R
										IV31-PL-150-R
										IV31-PK-150-R
										IV31-ST-150-R
										IV31-SK-150-R
IV31-WH-150-R										
200 (8")	50	210	Natural Rubber	235	68		(A) 103X78 (B) 140X110X3.5 (C) 10			IV31-FX-200-R
										IV31-PL-200-R
										IV31-PK-200-R
										IV31-WH-200-R

Rubber loose wheel with steel core with roller bearing

PRODUCT	Wheel dia (mm)	Wheel material	Tread width (mm)	Load capacity (kg.) Per Pc.	Bore Size MM	NO. Model
	75	Natural Rubber With Needle Roller Bearing	22	40	12	IV32-WH-75-R
	100		27	60	12	IV32-WH-100-R
	125		34	80	15	IV32-WH-125-R
	160		39	120	25	IV32-WH-160-R
	200		45	200	25	IV32-WH-200-R
	250		50	240	25	IV32-WH-250-R
	300		50	270	25	IV32-WH-300-R



IVTW (Chair Wheel)

PRODUCT	 Wheel material	 Wheel dia (mm)	 Load capacity (kg.) Per Pc.	  Thread size (mm) Stem size (mm)	NO. Model
 TH  ST	Nylon	50 (2")	25	3/8" BSW x 15	IV-TW-TH50-NY-B
				Ø 11x22	IV-TW-ST50-NY-B
 TH  ST	Nylon + Polyurethane	50 (2")	40	3/8" BSW x 15	IV-TW-TH 50-PU-G
				Ø 11x22	IV-TW-ST 50-PU-G
 TH	Nylon + Polyurethane	50 (2")	40	3/8" BSW x 15	IV-TW-TH 50-NY-PU-W
 PK-NY  PK-PU	Nylon	50 (2")	30	Plate Size (38 x 38)	IV-TW-R-PL/PK 50-NY-B Available in set only (2+2)
	Nylon + Polyurethane		40		IV-TW-R-PL/PK 50-PU-G Available in set only (2+2)
 TK-NY  TH-PU	Nylon	50 (2")	30	3/8" BSW x 18	IV-TW-R-TH/TK 50-NY-B Available in set only (2+2)
	Nylon + Polyurethane		40		IV-TW-R-TH/TK 50-PU-G Available in set only (2+2)



Code : IV-PHT-D-300-5

Product Code : IV-PHT-D-300-5
 Load Capacity : 300 Kg
 Platform Size : 895x590mm (3'x2')
 Caster Wheel : 125mm (5")
 Platform Material : Polypropelene (PP)

Product Code : IV-PHT-D-150-4
 Load Capacity : 150 Kg
 Platform Size : 725x485mm (29"x19")
 Caster Wheel : 100mm (4")
 Platform Material : Polypropelene (PP)



Code : IV-S-PFT-MS-300-GER

Produc Code :IV-S-PFT-MS-300-GER
 Load Capacity : 300 Kg
 Platform Size 3'x2'
 Caster Wheel : 125mm (5") - PU
 Platform Material : M.S.



FOLDING / PLATFORM TROLLY

Code : IV-FHC-H-02-90-TPE

Product Code : IV-FHC-H-02-90-TPE
 Load Capacity : 90 Kg
 Size : (L) 395x (W) 415mmx (H)1080
 Caster Wheel : 150mm
 Platform Material : Aluminium/M.S.



Code : IV-H-LH03-40

Product Code : IV-H-LH03-40
 Load Capacity : 40 Kg
 Size : (L) 23cmx (H)44cm
 Caster Wheel : 100mm
 Platform Material : Polypropylene



Code : IV- TL01-D200-4 GER

Product Code :IV- TL01-D200-4 GER
 Load Capacity : 200 Kg
 Platform Size : 745 x 480mm (30"x19")
 Caster Wheel : 100mm - ER
 Platform Material : Metal (M.S.)

