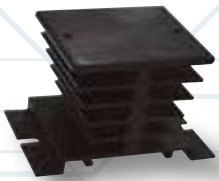


Thermal Management is of prime importance in the application and use of Panel Mount Solid State Relays due to their internal power dissipation. Heat Sink will optimized Thermal Performance as it helps dissipate the heat generated in the SSR due to the load current drawn from it.



HS211BD

● Thermal Resistance @2.1°C/W
● Suitable for one, 1phase SSR
● Din Rail Mount With HS501
● Size – 50x60x50 mm
● Black Anodize



HS211DRS

● Thermal Resistance @1.9°C/W
● Suitable for one, 1phase SSR
● Din Rail Mount with HS501
● Size – 70x45x70 mm
● Black Anodize



HS191DRP

● Thermal Resistance @1.9°C/W
● Suitable for one, 1phase SSR
● Din Rail Mount with HS501
● Size – 70x45x70 mm
● Black Anodize



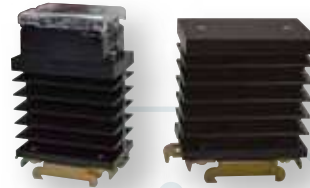
HS101

● Thermal Resistance @1°C/W
● Suitable for one, 1/3phase SSR
● Size – 110x80x72 mm
● Panel Mount / Din rail Mount
● Axial Cooling Fan mount Facility



HS211DRG

● Thermal Resistance @2.1°C/W
● Suitable for one, 1phase SSR
● Din Rail Mount With HS501
● Size – 50x60x50 mm
● Black Anodize



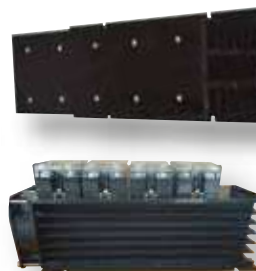
HS191DRG

● Thermal Resistance @1.9°C/W
● Suitable for one, 1phase SSR
● Din Rail Mount with HS501
● Size – 70x45x70 mm
● Black Anodize



HS171

● Thermal Resistance @1.7°C/W
● Suitable for one, 1phase SSR
● Din Rail Mount With HS501
● Size – (LxWxH) 50x80x100 mm
● Black Anodize



HS250/HS250F

● Thermal Resistance @0.48°C/W
● Suitable for one, upto 5 SSR
● Size – (LxWxH) 250x100x80 mm
● Panel Mount / Din rail Mount
● Axial Cooling Fan Mount Facility



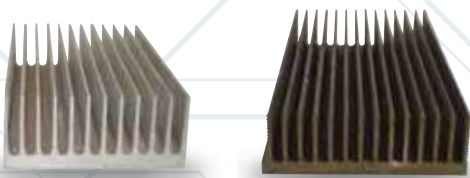
HSPM22

•	Thermal Resistance @2.5°C/W
•	Suitable for one NOVA 22 Series / PMPT
•	Series SSR
•	22.5mm Heat Sink



HSPM22F18

•	Thermal Resistance @2.5°C/W
•	Suitable for one NOVA 22 Series / PMPT
•	Series SSR
•	22.5mm Heat Sink



HS138

Description	Panel Mount Heat Sink
Model	HSP138
Thermal Resistance	0.45°C/W
Material	Aluminum
Finish	Black / White Anodized
Size	138 x 50 x 250



HS175

•	Thermal Resistance @0.4°C/W
•	Suitable for one, 1/3phase SSR
•	Din Rail Mount with Clamp
•	Axial Cooling Fan mount facility available



HS501

•	DIN RAIL CLAMP
•	Thermal Resistance @5°C/W
•	Suitable for 1 Phase SSR, Heat Sink,
•	HS211,191,201.



HS215

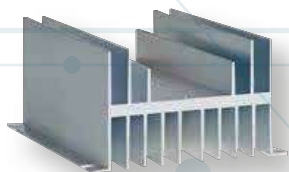
Description	Panel Mount Heat Sink
Model	HS215
Thermal Resistance	0.27°C/W
Material	Aluminum
Finish	Black / White Anodized
Size	215 x 77 x 250



HS151, HS151DR

- 1.5°C/W Thermal resistance
- Suitable for 1 single or dual SSR
- DIN rail or panel mounting

DESCRIPTION	
Size w/o Bracket (W x L x H) [in]	1.78 x 3.20 x 3.74
Size w/o Bracket (W x L x H) [mm]	45.2 x 81.3 x 95.0
Surface Area [square inches/square cm]	138.0/891
Heat Sink Material	Aluminum
Heat Sink Surface Finish	Black Anodized
Weight w/o DIN Bracket [lbs/grs]	.85/319
SSR Mounting Holes, Screw Torque [in lbs/Nm]	Two 8x32, 15 to 20/1.7 to 2.2
Accepts fan(s)/qty & size [mm]	Yes/one 40



HS072

- 0.7°C/W Thermal resistance
- Suitable for 1 or 2 single or dual SSRs
- Panel mounting

DESCRIPTION	
Size (W x L x H) [in]	4.75 x 5.50 x 2.63
Size (W x L x H) [mm]	120.7 x 149.7 x 66.8
Surface Area [square inches/square cm]	253.6/1640
Heat Sink Material	Aluminum
Heat Sink Surface Finish	Natural Aluminum
Weight [lbs/grs]	1.16/526
SSR Mounting Holes, Screw Torque [in lbs/Nm]***	Six 8x32, 15 to 20/1.7 to 2.2
Accepts fan(s)/qty & size [mm]	No
*** For HS072 heat sinks, we recommend the Hk1 hardware kit for SSR mounting. The number of kits required depends upon the number and type of SSRs to be mounted.	



HS053

- 0.5°C/W Thermal resistance
- Suitable for 1, 2, or 3 single or dual SSRs; one 3 Phase SSR
- Panel mounting

DESCRIPTION	
Size (W x L x H) [in]	6.00 x 6.00 x 3.50
Size (W x L x H) [mm]	152.4 x 152.4 x 88.9
Surface Area [square inches/square cm]	694.3/4480
Heat Sink Material	Aluminum
Heat Sink Surface Finish	Black Anodized
Weight [lbs/grs]	3.14/1423
SSR Mounting Holes, Screw Torque [in lbs/Nm]***	Six 8x32, 15 to 20/1.7 to 2.2
Accepts fan(s)/qty & size [mm]	Yes/one 80
*** For HS053 heat sink, we recommend the Hk1 hardware kit for SSR mounting. The number of kits required depends upon the number and type of SSRs to be mounted.	



Hs103, HS103DR

- 1.0°C/W Thermal resistance
- Suitable for 1, 2, or 3 single or dual SSRs; one 3 Phase SSR
- DIN rail or panel mounting available

DESCRIPTION	
Size w/o Bracket (W x L x H) [in]	5.20 x 3.00 x 2.37
Size w/o Bracket (W x L x H) [mm]	132.0 x 76.2 x 60.2
Surface Area [square inches/square cm]	227.2/1470
Heat Sink Material	Aluminum
Heat Sink Surface Finish	Black Anodized
Weight w/o DIN Bracket [lbs/grs]	.97/439
SSR Mounting Holes, Screw Torque [in lbs/Nm]	Six 8x32, 15 to 20/1.7 to 2.2
Accepts fan(s)/qty & size [mm]	Yes/one or two 40



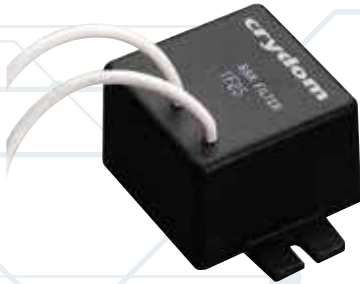
HS073

- 0.7°C/W Thermal resistance
- Suitable for 1, 2 or 3 single or dual SSRs; one 3 phase SSR
- Panel mountable

DESCRIPTION	
Size w/o bracket (W x L x H) [in]	6.82 x 5 x 2.12
Size w/o bracket (W x L x H) [mm]	173.2 x 127 x 53.8
Surface area [square inches/square cm]	385.4/2486.44
Heat sink material	Aluminum
Heat sink surface finish	Black anodized
Weight w/o DIN bracket [lb/gr]	2.2/997.9
SSR mounting holes	Six 8x32
Screw torque [in lb/Nm]	15 to 20/1.7 to 2.2
Accepts fan(s)/qty & size [mm]	No

ACCESSORIES

AC Filters



- EMI noise suppression filters for SSRs in single-phase and three-phase systems

KS Covers



KS100

- Clear Plastic cover for standard single phase SSRs.



KS300

- Clear Plastic cover for three phase SSRs.

Thermal Pads

Single Phase Heat Transfer Pads

•	Part no.: HSP1
•	2.3 x 1.8 in or 58.4 x 45.7 mm Non-adhesive Thermal pad for single phase and dual panel mount SSRs (25 pack).
•	Part no.: TP01
•	2.1 x 1.6 in or 53.3 x 40.6 mm Thermal pad for single phase or dual panel mount DDRs. include adhesive on one side.

Three Phase Heat Transfer Pads

•	Part no.: HSP3
•	4.1 x 2.9 in or 104.1 x 73.7 mm Thermal pad for three phase panel mount SSRs.
•	Part no.: TP03
•	3.9 x 2.8 in or 99.1 x 71.1 mm Thermal pad for three phase panel mount DDRs. include adhesive on one side.

Hardware Kits



Hardware Kit 1

- | | |
|---|--|
| • | Part no.: HK1 |
| • | Bag with 2 SSR mounting screws 8-32 x 3/8. |



Hardware Kit 2

- | | |
|---|--|
| • | Part no.: HK2 |
| • | Bag with 1 ground screw 10-32 x 3/8 and 2 bracket screws 6-32 x 1/4. |

Always apply Thermal Paste/PAD (also called heat sink compound) between the SSR and heat sink as fitting the heat sink with the SSR without thermal paste will not dissipate the heat effectively.

To obtain wider profiles than the ones achievable by extrusion process, it is possible to join together two or more extruded profiles. The high efficiency heat sinks series born from the continuous and growing need to have heat sinks with higher thermal performances.