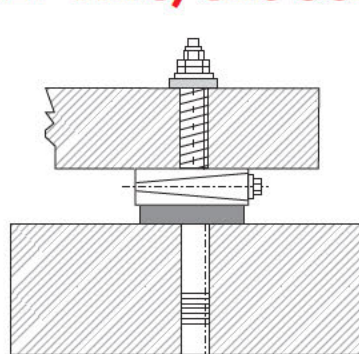
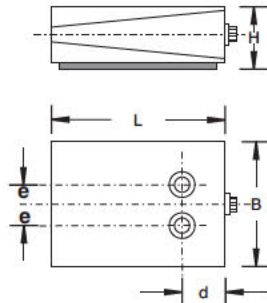


## WEDGE MOUNTS, Series DT (BOLT Thru) and Series DTP



Series DT



Series DTP

Dynemech Wedge Mounts, Series DT is designed for machines which are top heavy or have eccentric motion or machines which must be anchored to the ground. Boring Machine, Drilling and Milling machines, Machining centres, Special purpose machines, Long lathes, Long planers, Power Presses etc.

Series DTP have a height of 100/150 mm at mean position to help proper cleaning and repairing under the machine. All other specifications are similar to Series DT, as given below.

Model	Load Kg/pc	Length (L) mm	Width (B) mm	Height (H) at mean position (mm)	d (mm)	e (mm)	bore* Ø(mm)	Adjustment range (mm)
DT0-u	900	100	100	53	42	23	18	6
DT1-u	1100	115	115	59	50	24	22	8
DT2-u	1800	150	150	65	60	23	22	10
DT3-u	3200	200	200	65	75	27	28	12
DT4-u	4000	200	250	85	95	27	28	18
DT5-u	6400	250	320	90	125	55	28	18
DT6-u	9600	300	400	90	148	50	30	20
DT7-u	16000	400	500	95	160	70	32	20
DT0-m	1000	100	100	53	42	23	18	6
DT1-m	1400	115	115	59	50	24	22	8
DT2-m	2200	150	150	65	60	23	22	10
DT3-m	4000	200	200	65	75	27	28	12
DT4-m	5000	200	250	85	95	27	28	18
DT5-m	8000	250	320	90	125	55	28	18
DT6-m	12000	300	400	90	148	50	30	20
DT7-m	20000	400	500	95	160	70	32	20
DT0-i	1400	100	100	63	42	23	18	6
DT1-i	1800	115	115	69	50	24	22	8
DT2-i	2900	150	150	75	60	23	22	10
DT3-i	5200	200	200	75	75	27	28	12
DT4-i	6500	200	250	95	95	27	28	18
DT5-i	10000	250	320	100	125	55	28	18
DT6-i	15000	300	400	100	148	50	30	20
DT7-i	26000	400	500	105	160	70	32	20
DT0-s2	800	100	100	63	42	23	18	6
DT1-s2	950	115	115	69	50	24	22	8
DT2-s2	1600	150	150	75	60	23	22	10
DT3-s2	2800	200	200	75	75	27	28	12
DT4-s2	3500	200	250	95	95	27	28	18
DT5-s2	5500	250	320	100	125	55	28	18
DT6-s2	8500	300	400	100	148	50	30	20
DT7-s2	14000	400	500	105	160	70	32	20

\*Bolt is optional in DT Series Wedge Mounts.

## DYNEMECH INSULATING DISCS

FOR ANCHORING APPLICATIONS



BOLT SIZE	OD Ø	ID Ø	THICKNESS (mm)
M16	40	17	25
M20	52	21	25
M30	75	31	25