



**Kanext Equipments**

A/49/2, FF, Shiva Shakti Industrial Estate,  
B/H Maruti Estate, Phase - 1,  
G.I.D.C Vatva, Ahmedabad-382445  
Email : [info@kanextequipments.com](mailto:info@kanextequipments.com)

[www.kanextequipments.com](http://www.kanextequipments.com)





# KANEXT COMPANY PROFILE

The Company has Expertise for Manufacturing of Cranes, Hoists, Chain Pulley Blocks and Good Lifts. Our Strong Engineering Background of 15 Years is Equally Capable of Manufacturing Facility. Each Cranes a Creative Solution to Special Handling Problem. Whatever may be the type of Industry or its Unit Load Handling Requirements, Every Possibility Exists That KaneXT has the most Pertinent Solution in the form of a Suitable Hoist of Crane.

Our Cranes have been Designed and Built to Provide years of reliable and Safe Operation, With Global Services and After-sales Network Spanning over the World.

We are Renowned for Providing Unique Solution for the Most Challenging Material Handling Requirements Across a Wide Spectrum of Industries and are Highly Relied upon for our Design Capability, High Manufacturing Standards and Service Excellence.

Are you Facing a Lifting and Handling Challenge in your Industry? Contact Us

## Container Handling

### Typical RMG Model Range

Hoisting capacity under spreader	35T / 40T
Gantry span	22 - 70 m
Lifting height	From 9.2 m for 1 over 2 Up to 26.9 for 1 over 8
Hoisting speed without load	40 m/min
Hoisting speed with rated load	30 m/min
Trolley travel ( with or without load)	30 m/min – 40 m/min
Gantry travel ( with or without laod)	120 m/min – 130 m/min

### Advantages of RMG for Yard Stacking

- Suitable for both port and rail terminals.
- Suitable for various yard space conditions.
- Increased yard capacity with wider and higher stack possibilities.
- Reduction in emissions and noise.
- Minimal maintenance.
- Electric supply for energy efficiency and reduced running cost.

### Motors / Suppliers

- All drives are sized for maximum torque and power requirements.
- All major components are sourced from reputable manufacturers.
- The control system used has been specifically developed for container cranes by Kanext, which has resulted in a flexible, robust construction with exceptional reliability.
- The “plug-in” modular construction of the electronic equipment is designed to maximise crane availability and minimise the necessity for highly skilled electronic personnel.

### Diagnostic and Managment System Summary of Main System Features

- General Control Overview.
- “Crane ON” status.
- Individual Drive ON screens (one for each drive).
- Detailed drive data (motor current, voltage, speed).
- Wind speed and history.
- Spreader status.
- Fault stack.
- Load statistics.
- Maintenance.

## Container Handling



### Advantages by Design

- Minimal spreader positioning times.
- No-sway in hoist, trolley and travel directions.
- Anti-skew..
- Anti-Sway System
- Lower energy consumption.
- All electric spreader - Less maintenance.
- Significant increase in productivity when compared with alternative designs.

### Description

- Kanext designed and built.
- logic control system.
- Status of switchgear and external electrical components.
- Stores faults.
- User-friendly interface with easy to use colorful screens.
- Independence of crane logic system, therefore does not interfere with crane control in the event of self failure.
- Includes trending and tables for production data and drive data

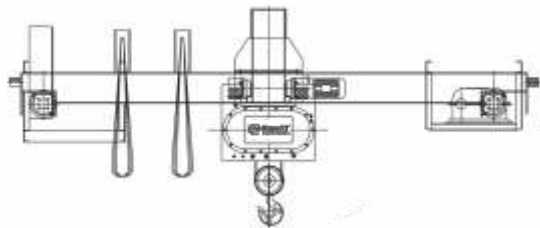






# EOT CRANES

KaneXT Single Girder and Double Girder E.O.T. Cranes are designed and manufactured in accordance with IS:3177 and IS:4137. Considering adequate factor of safety with respect to appropriate duty, the structural parts of the cranes are designed in accordance with IS:807. KaneXT also manufactures cranes as per international standards. KaneXT cranes are manufactured with standard components and controls to ensure reliability.



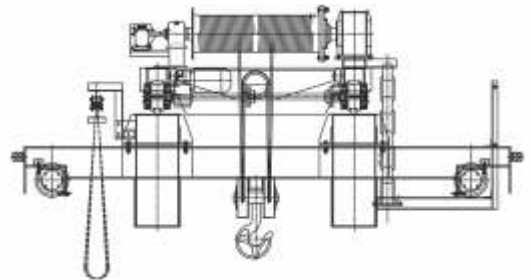
**Span**

3 mtrs. to 35 mtrs.

**Safe Working Load**

500 kgs. to 20,000 kgs.

- **Crane Control**  
From floor through Pendant Push Buttons, Optionally Through Radio Remote Control / cabin with master control.
- **Motors**  
Squirrel Cage & Slip Motors based on application requirements, built-in separator electrically operated fail to safe brakes for all three motions. Motors with 'F' class insulation provided in all motions.
- **Power Supply System**  
To Hoist and Cross Travel through Trailing Cables / Drag Chain to Crane through Shrouded Bus Bars / Trailing Cable / MS Angle Iron Conductors / Bare Copper Conductors (depending on customer's choice and application).



**Span**

5 mtrs. to 40 mtrs.

**Safe Working Load**

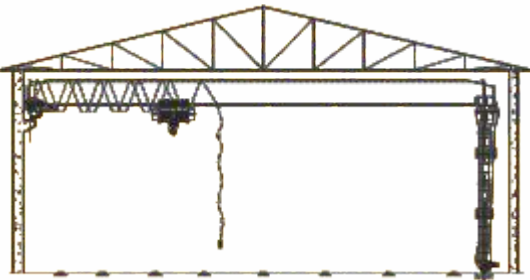
500 kgs. to 2,00,000 kgs.

- **Class of Duty/Standards**  
Equivalent to M3, M5, M7, M8 as per IS:3177 / IS:807
- **Drive System**  
Accordance with IS : 3177 Structural Parts With IS : 807 and Other Miscellaneous Parts with IS : 3177, IS : 3938 and IS:4137
- **Speeds**  
Selected depending on client specifications/application/ shed dimensions



# GOLIATH CRANES

KaneXT make Goliath cranes are designed and manufactured in accordance with IS:3177 and IS:4137. Considering adequate factor of safety with respect to appropriate duty. The structural parts of the cranes are designed in accordance with IS:807. KaneXT also manufactures cranes as per international standards. KaneXT cranes are manufactured with standard components and controls to ensure reliability. Our wide range of goliath cranes are useful for handling material resources for various industries and projects.



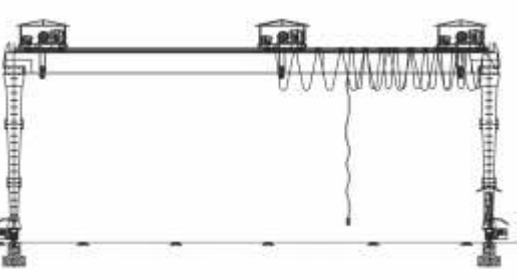
**Span**

5 mtrs. to 20 mtrs.

**Safe Working Load**

1000 kgs. to 60,000 kgs.

- **Crane Control**  
From floor through Pendant Push Buttons, Optionally Through Radio Remote Control / cabin with master control.
- **Motors**  
Squirrel Cage & Slip Motors based on application requirements, built-in separator electrically operated fail to safe brakes for all three motions. Motors with 'F' class insulation provided in all motions.
- **Power Supply System**  
To Hoist and Cross Travel through Trailing Cables / Drag Chain to Crane through Shrouded Bus Bars / Trailing Cable / MS Angle Iron Conductors / Bare Copper Conductors (depending on customer's choice and application).



**Span**

5 mtrs. to 50 mtrs.

**Safe Working Load**

1000 kgs. to 1,00,000 kgs.

- **Class of Duty/Standards**  
Equivalent to M3, M5, M7, M8 as per IS:3177 / IS:807
- **Drive System**  
Accordance with IS : 3177 Structural Parts With IS : 807 and Other Miscellaneous Parts with IS : 3177, IS : 3938 and IS:4137
- **Speeds**  
Selected depending on client specifications/application/ shed dimensions



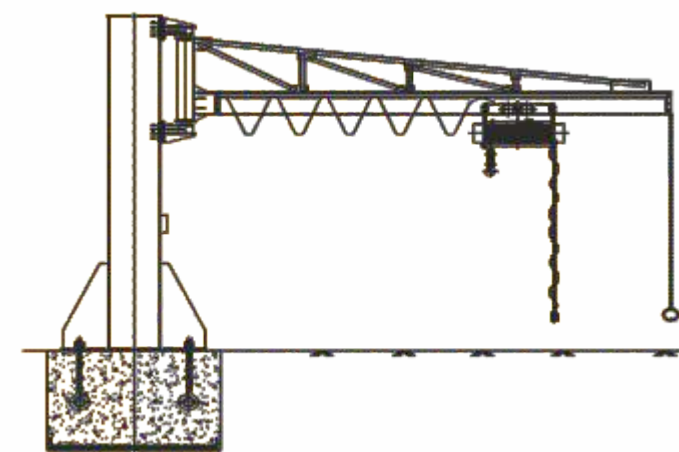
## JIB CRANES

KaneXT jib cranes meet the most demanding material handling requirements. There are various jib crane models from which to choose : floor-mounted pillar types; top and bottom-supported units; wall or column-mounted version and models that afford manual or motorized rotation. Built to the highest industry standards. KaneXT jib cranes have earned a reputation for ruggedness and durability.

**Span**  
2 mtrs. to 7 mtrs.

**Safe working load**  
250 kgs. to 5,000 kgs.

- **Crane Control**  
From floor through Pendant Push Buttons, Optionally Through Radio Remote Control / cabin with master control.
- **Motors**  
Squirrel Cage, based on application requirements, built-in separator electrically operated fail to safe brakes for all three motions. Motors with 'F' class insulation provided in all motions.
- **Power Supply System**  
To Hoist and Cross Travel through Trailing Cables / Drag Chain (depending on customer's choice and application).
- **Drive System**  
Accordance with IS : 3177 Structural Parts With IS : 807 and Other Miscellaneous Parts with IS : 3177, IS : 3938 and IS:4137
- **Speeds**  
Selected depending on client specifications/application/ shed dimensions



**Class of Duty/Standards**  
Equivalent to M3, M5, M7, M8  
as per IS:3177 / IS:807

## CAGE HOIST ARRANGEMENT

Flame Proof and Non Flame Proof types of goods lifts are suitable for wall type canopy as well as self-supporting steel structure. KaneXT has unique arrangement of providing four "T" guides for balanced loading and guide rollers for smooth and efficient drive. The goods lift is being operated by push button station fixed outside the cage on respective floors.

**Floor Level**  
Ground level + 10

**Pay Load Capacity**  
500 kgs. to 5,000 kgs.

### FLAME PROOF / NON FLAME PROOF



- The floor doors are provided with mechanical and electrical locking arrangement. Hence unless floor door is closed properly, lift cannot be started. additional gravity limit switch is provided for extra safety. In case of failure of over hoisting limit switch, power will be cut off by gravity limit switch upon over traveling of the cage.
- Every single rope is having rated capacity with min. 6 F.S. which in four fall construction will provide four times the required F.S. Hence even in case of breakage of 3 wire ropes out of 4, the cage will not fall. This is extra safety over any other conventional similar type goods lift
- The cage is made of rolled steel sections and sides are covered with bumped sheets. Cage top is covered with M.S. Sheets and bottom is covered with chequered plate for antiskid property. Collapsible doors are provided on cage as per entry and exit position. The cage is being guided with rollers on "T" guide rail. Antifriction bearings are provided for smooth and efficient traveling with low friction and longer life.







## HOISTS

KaneXT flame proof hoists are manufactured in wide range like lifting capacities between 250 kgs. to 25,000 kgs., lifting height up to 50 mtrs., with various types of cross travel trolleys like power travel type, hand geared travel, push pull trolley, flexible trolley to negotiate even a small radius.

### FLAME PROOF HOISTS

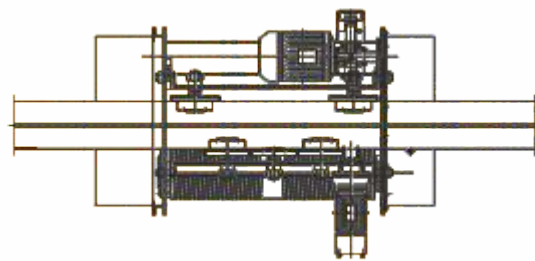


#### Class of Duty / Standards

IS : 3938 and IS : 2148

#### Safe Working Load

250 kgs. to 25,000 kgs.

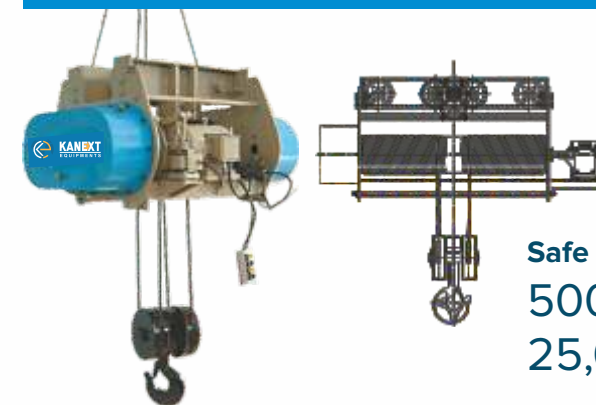


- KaneXT flame proof hoists are offered for gas group I, IIA and IIB suitable for zone-1 and zone-2 areas whereas for gas group IIC flame proof hoists are offered only for zone-2 areas.
- KaneXT flame proof hoists are designed in modular construction which greatly simplifies repairs and cuts down time. KaneXT flame proof hoists are designed in accordance with IS-3938. All electrical apparatus are housed in flame proof enclosures confirming to IS - 2148 and mechanical components are designed so that there is no ferrous metal to ferrous metal contact in order to avoid any chance of sparking. Hence KaneXT flame proof hoists are flame proof as well as spark proof.

## FOR THE FASTGROWING COMPANIES

KaneXT Wire rope hoists are designed in modular construction which greatly simplifies repairs & cuts down-time. The special features are low head-room, spur/ helical gears running on antifriction ball bearings with oil bath lubrication, motors confirming to IS 325, "fail to safe" breaks which automatically operate in case of any power failure, tested wire rope confirming to IS 2266, forged hooks conforming to IS 3815 and push button stations operating at step down voltage of 110 V:42 V or 24V.

### WIRE ROPE HOISTS



Safe Working Load  
500 kgs. to 25,000 kgs.

- **Crane Control**  
From floor through Pendant Push Buttons, Optionally Through Radio Remote Control.
- **Motors**  
Squirrel Cage & Slip Ring Motors based on application requirements, built-in separator electrically operated fail to safe brakes for all three motions. Motors with 'F' class insulation provided in all motions.
- **Power Supply System**  
To Hoist and Cross Travel through Trailing Cables / Shrouded type DSL System (depending on customer's choice and application).
- **Drive System**  
Drive through Squirrel Cage Induction Geared Motors with Built-in fail to safe brakes.
- **Speeds**  
Selected depending on client specifications /applications / shed dimensions
- **Class of Duty / Standards**  
Equivalent to IS 3938

## CHAIN HOISTS

KaneXT electric chain hoists are designed in modular construction for easy maintenance. the special features like low headroom, spur gears running on antifriction ball bearings with oil bath lubrication, motors confirming to IS/BS/DIN etc. make. KaneXT chain hoists unbeatable to its price. KaneXT chain hoists are available in hook suspension type, Push pull trolley type, hand geared trolley type, power travel trolley type and flexible trolley type to negotiate small radius.

- **Concentrated design for high substance.**
- **Quality Designed forged steel top and bottom hooks.**
- **Precision shaped load sheave is mounted to assure minimal wear and smooth operation.**

Safe Working Load  
500 kgs. to 2,000 kgs.

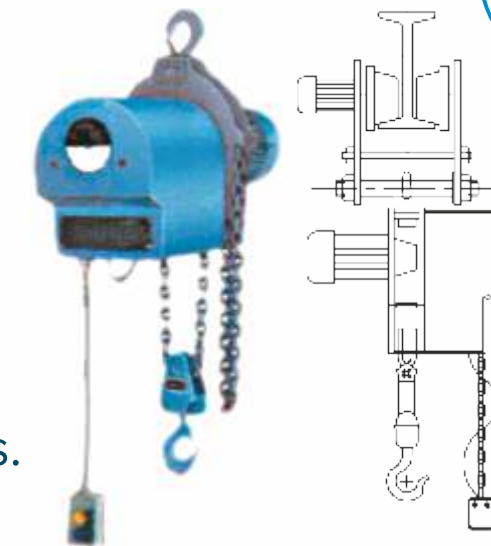
## CHAIN PULLEY BLOCKS

KaneXT chains pulley blocks are designed and manufactured in accordance with IS 3832 and are available in Hook suspension type, push-pull trolley type and geared trolley type. Load chain used is graded alloy steel chain and hand chain is m.s. calibrated to relevantt Indian standards and international standards.

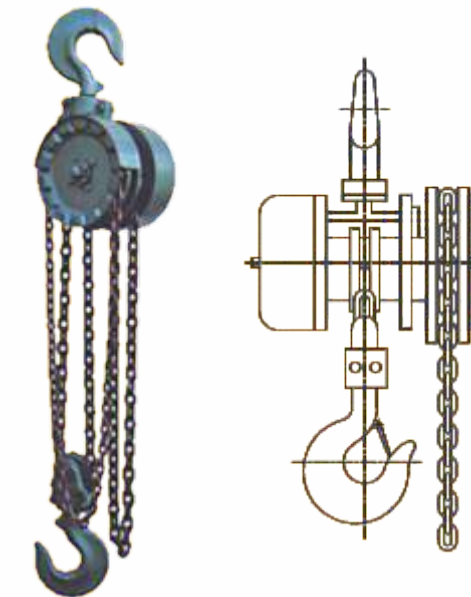
- **Low Headroom.**
- **Positive Transmission (Bearing Supporter).**
- **Lubrication :**  
Totally enclosed gear case is packed with sufficient grease.

Safe Working Load  
Capacity upto 20 Tons.

### CHAIN HOISTS



### CHAIN PULLEY BLOCKS





## CRANE SPARES & SERVICES

SHROUDED BUS BAR



INDUSTRIAL BRAKE



CRANE LIMIT SWITCHES



RESISTANCE BOX & MASTER CONTROLLERS



BRAKE DRUM & GEAR COUPLING



CABLE CARRIER



DSL LAMP INDICATOR & V.V.F. DRIVES



ANTI COLLISION DEVICE



CABLE TROLLEY



RADIO REMOTE CONTROL



PENDANT STATION



CABLES



CRANE SPARE



## QUALITY AND SERVICES

### QUALITY POLICY

KaneXT Equipments is manufacture of material handling and electrical equipments in Flame Proof Enclosures which are designed as per agreed specifications and timely supplying quality Products to satisfy the customers with continuous improvement in product and service with motivated and committed work force and effectively complying quality Management System.

### QUALITY OF OUR PRODUCT

Beyond a stellar attention to customer service and excellence in engineering, we at KaneXT ensure that the utmost in quality is applied to all means of production, supplying and exporting of all our material handling equipments.

To deliver quality products:

- We perform alignment of trolley and crane wheels, leaveling and measuring, analysis of results, strength calculations for safe operations of crane.
- We provide Testing Certificates for all the crucial parts required for all type of cranes.

### OUR SERVICES

- We arrange selection and installation procedure for gantry girders for Single Girder Type E.O.T. Cranes, Double Girder Type E.O.T. Cranes and Goliath / Gantry Cranes.
- We perform design of columns for supporting the Gantry Girder, design of Monorails and supports for Electric Hoists.
- We contribute selection of the control system for the equipment as per the client's usage.
- We provide selection and sizing of Down Shop Leads for Hoists and E.O.T. Cranes, Sizing of Cable Reeling Drums and cables of Goliath / Gantry cranes.
- We arrange selection and sizing of incoming cables and protective equipment and economic routing, based on workshop architecture.
- We carry out Erection and Commissioning of Cranes, Hoists, Cage Hoists ( Goods Elevator), Chain Pulley Blocks and rails. We also provide Gantry Alignment readiness and refurbishment of old Cranes.
- We provide Load Testing and Certification of the Material Handling Equipments.