



EXTREMELY FAST

VERY PRECISE

RADIOGRAPHIC QUALITY

Sigma Weld Pro Series is State of the art digital welding technology operating at 150kHz. Ensures very quick response time and better welding performance each time. The modular technology helps increase duty cycle upto 100% and ensures maximum machine uptime.

S.W.A.T (SigmaWeld Accelerated TIG) is a keyhole welding mode available upto 1000Amps. Increases the speed of welding upto 100% compared to traditional GTAW process. No edge preparation upto 10mm required.



LCD Screen Display



Modular Architecture
Max. Up time.

FAST, PRECISE, DEPENDABLE

- No edge preparation upto 10mm
- High speed single pass upto 1000mm/min
- No filler wire required
- Square Butt Welds
- Low heat input, Low distortion
- Suitable for welding in 1G & 2G positions
- Suitable for SS, Duplex SS, Alloy Steel, Titanium.
- Automated process, Retrofittable on standard automation Systems.

NORMAL MODE

A wider arc and less deeper penetration when welding without pulsation or with low frequency.



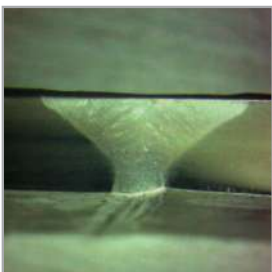
S.W.A.T MODE

Deeper penetration and concentrated arc pulsation welding



APPLICATIONS

Tube Mills
Tanks & Vessels
Food, Pharma & Dairy Equipment
Aerospace
Nuclear



Specifications

Current Source	S.W.A.T 500 PDC	S.W.A.T 1000 PDC
Welding current adjustment range, A	3-500	3-1000
Current strength at 100% Duty cycle(40° C), A	500	1000
Supply mains voltage, V	400(± 25%)	400(± 25%)
Main frequency in the network, Hz	50/60	50/60
Safety circuit breaker, A	3x60	(3x63)x2
Consumed current, A	31Amps	88Amps
Max. power consumption, kW	16.5	45
Efficiency,%	96	96
Open Circuit voltage, V	93	93
Welding machine dimensions (LxWxH), mm	740x300x660	800 x 404 x 942
Weight of the welding machine, kg	60.0	90.0
Protection class	IP 34	IP 34
Insulation class	H	H

Optional



CHILLER



COLD WIRE FEEDER

**CONTROL
PANEL FOR
INTEGRATION**