

AUTOCLAVE

Vetrical Autoclave
Cylindrical Horizontal Autoclave
Rectangular Horizontal Autoclave
Sliding Horizontal Autoclave
Bio MEDICAL Waste Autoclave
Industrial Autoclave
Table TOP Autoclave

ETO STERILIZER

Ethylene Oxide Gas Sterilizer
(ETO STERILIZER)
Industrial (ETO STERILIZER)
Table Top (ETO STERILIZER)

PRODUCTS

Ultra Sonic Clener
Mortuary Chamber
LaminorBOD

LAUNDRY STATION

Washing Machine
Hydro Extractor
Tumble Dryer
Hydro Machine
Bhagona

COMPLETE CSSD SOLUTION FOR YOUR HOSPITAL



WELCOME TO THE WORLD OF

- CSSD -

CATALOG CONTAINS

- All Vertical Autoclave
- Horizontal Autoclave
- ETO Sterilizer
- Semi Automatic
- Fully Automatic
- Single Door, Double Door

COMPLETE SETUP OF LAUNDRY STATION ON ROOF

- Washing Machine
- Hydro Extractor
- Tumble Dryer
- Hydro Machine
- Vacuum Press
- etc...

Vertical Triple Walled High Pressure Autoclave Model Number: NEXX-001

NEXXGEN SURGICAL, Have Tow Model of Vertical Triple Walled Autoclave Will Be TOP Loading and in Vertical Shape With Triple Layer With Boiler. These High Pressure TOP Loading Autoclaves Play Important Role in Sterilization Procedures Required in Hospitals, Pharmaceutical Companies, Biopharma and Microbiology Laboratories etc.

NEXXGEN SURGICAL Vertical Autoclave Are Made of Stainless Steel to Ensure Corrosion Resistance Surface. Triple Walled Construction Ensures Excellent Level of Safety. Boiler is Fitted With Chamber and Connected to the Chamber. Water Level Indicator is Also Attached to the Boiler With Automatic Low Water Cut-off.

User Can Easily Set The Desired Temperature With The Help Of Digital Controller Fitted on The Front Side of The Unit. We Provide Radial Locking Pressure Door With Silicon Gas Kit. We Use Automatic Pressure Control Switch an User Easily Can Set Temperature by Digital Controller. Our Machine Work With Pressure Between 15-22 PSI.

FEATURES & BENEFITS:

- Vertical Triple Walled Autoclave
- Stainless Steel Interior and Exterior
- Triple Walled Construction
- Standard Temperature 121°C
- Working Pressure 15 psi to 22 psi
- Silicon Jointless Rubber Door Gasket
- Automatic Pressure Control Switch
- Vacuum Breaker in Chamber
- ISI Safety Valves
- Digital Temperature Controller with Timer and Alarm (Buzzer)
- Automatic Water Level Cut-off
- Water Level Glass To Check Water Level
- SS Pressure Gauges
- ISI Marked Flange / Immersion Heating Elements

TECHNICAL SPECIFICATIONS

Model	NEXX-001
Design	Vertical
Construction	Triple Walled
Working Pressure	Variable 15 to 22 PSI
Working Temperature	121°C
Internal Chamber	Corrosion Resistant Stainless Steel SS 316
External Chamber	Corrosion Resistant 304 Grade Stainless Steel
Finishing	Mirror Finished Inner and External Surface
All Piping	SS 304
Door	Single Doors
Sterilization Period	25 to 35 Minutes
Steam Exhaust	5 to 7 Minutes
Boiler	<ul style="list-style-type: none">• Made of SS 304 Sheet• Water Inlet & Outlet Valves• Water Level Glass Window• Boiler Safety Valve• With ISI Marked Water Immersion Type Industrial Heating Elements.
Hydraulic Tested	on 40 psi
Sensor	PT 100
Safety Valve	For Excess Pressure Inside Chamber and Steam Generator.
Mechanical Time w / Alarm	Regulates Sterilization Time and Activates Buzzer When Sterilization Cycle Completes
Optional Accessories	<ul style="list-style-type: none">• PLC Operation• Vacuum Drying• Printer• Auto Add Water• Door Inter Lock• Automatic Pressure Control Switch• Water Cut - off• Temperature Indicator• Caster Wheels
Power Supply	220 Volts / 440 Volts (Three Phase)



NEXX-001

Size of Vertical Autoclave

INNER CHAMBER IN MM	INNER CHAMBER IN INCHES	CAPACITY IN LTR	LOAD (KW)
250 X 450 MM	10" X 18"	22	2
300 X 500 MM	12" X 20"	40	3
350 X 550 MM	14" X 22"	50	3
400 X 600 MM	16" X 24"	78	4
450 X 600 MM	18" X 24"	98	4
550 X 750 MM	22" X 30"	180	6

Steam Storage High Pressure Vertical Autoclave Model Number: NEXX-001A

NEXXGEN SURGICAL, Have Two Model of Vertical Triple Walled Steam Storage Autoclave Will Be TOP Loading and in Vertical Shape With Two Chamber. One is Inner Chamber For Equipments Sterilization and Second Will Store Steam in Jacket With Boiler. These High Pressure TOP Loading Autoclaves Play Important Role in Sterilization Procedures Required in Hospitals, Pharmaceutical Companies, Biopharma and Microbiology Laboratories etc.

NEXXGEN SURGICAL Vertical Autoclave Are Made of Stainless Steel to Ensure Corrosion Resistance Surface. Triple Walled Construction Ensures Excellent Level of Safety. Boiler is Fitted With Chamber and Connected to the Chamber. Water Level Indicator is Also Attached to the Boiler With Automatic Low Water Cut-off.

User Can Easily Set The Desired Temperature With The Help Of Digital Controller Fitted on The Front Side of The Unit. We Provide Radial Locking Pressure Door With Silicon Gas Kit. We Use Automatic Pressure Control Switch and User Easily Can Set Temperature by Digital Controller. Our Machine Work With Pressure Between 15-22 PSI.

FEATURES & BENEFITS:

- Vertical Triple Walled Steam Storage Autoclave
- Stainless Steel Interior and Exterior
- Triple Walled Construction
- Standard Temperature 121°C
- Working Pressure 15 psi to 22 psi
- Silicon Jointless Rubber Door Gasket
- Automatic Pressure Control Switch
- Vacuum Breaker in Chamber
- ISI Safety Valves
- Digital Temperature Controller with Timer and Alarm (Buzzer)
- Automatic Water Level Cut-off
- Water Level Glass To Check Water Level
- SS Pressure Gauges
- ISI Marked Flange / Immersion Heating Elements

TECHNICAL SPECIFICATIONS

Model	NEXX-001A
Design	Vertical
Construction	Triple Walled
Working Pressure	Variable 15 to 22 PSI
Working Temperature	121°C
Internal Chamber	Corrosion Resistant Stainless Steel SS 316
External Chamber	Corrosion Resistant 304 Grade Stainless Steel
Finishing	Mirror Finished Inner and External Surface
All Piping	SS 304
Door	Single Doors
Sterilization Period	25 to 35 Minutes
Steam Exhaust	5 to 7 Minutes
Boiler	<ul style="list-style-type: none">• Made of SS 304 Sheet• Water Inlet & Outlet Valves• Water Level Glass Window• Boiler Safety Valve• With ISI Marked Water Immersion Type Industrial Heating Elements.
Hydraulic Tested	on 40 psi
Sensor	PT 100
Safety Valve	For Excess Pressure Inside Chamber and Steam Generator.
Mechanical Time w / Alarm	Regulates Sterilization Time and Activates Buzzer When Sterilization Cycle Completes
Optional Accessories	<ul style="list-style-type: none">• PLC Operation• Vacuum Drying• Printer• Auto Add Water• Door Inter Lock• Automatic Pressure Control Switch• Water Cut - off• Temperature Indicator• Caster Wheels
Power Supply	220 Volts / 440 Volts (Three Phase)



NEXX-001A

Size of Vertical Autoclave

INNER CHAMBER IN MM	INNER CHAMBER IN INCHES	CAPACITY IN LTR	LOAD (KW)
250 X 450 MM	10" X 18"	22	2
300 X 500 MM	12" X 20"	40	3
350 X 550 MM	14" X 22"	50	3
400 X 600 MM	16" X 24"	78	4
450 X 600 MM	18" X 24"	98	4
550 X 750 MM	22" X 30"	180	6

Cylindrical Horizontal Semi Automatic Autoclave Model Number: NEXX-002

NEXXGEN SURGICAL, Have Comprehensive Range Of Horizontal Autoclaves. Cylindrical Horizontal Autoclave Will Be Front Loading And In Horizontal Shape With Triple Layer With Boiler. These High Pressure Front Loading Autoclaves Play Important Role In Sterilization Procedures Required In Hospitals, Pharmaceutical Companies, Biopharma And Microbiology Laboratories Etc.

NEXXGEN SURGICAL Horizontal Autoclave Units Are Made Of Stainless Steel To Ensure Corrosion Resistance Surface. Tipple Walled Construction Ensures Excellent Level Of Safety. Boiler Is Fitted Separately And Connected To The Chamber. Water Level Indicator Is Also Attached To The Boiler With Automatic Low Water Cut-off.

User can easily set the desired temperature with the help of digital controller fitted on the front side of the unit. we provide radial locking pressure door with silicon gas kit. we use automatic pressure control switch and user easily can set temperature by Digital Controller. our machine work with pressure between 15-34 PSI.

TECHNICAL SPECIFICATIONS

Model	NEXX-002
Design	Cylindrical Horizontal Type
Construction	Triple Walled
Valve for Jacket to Chamber Transfer, Chamber Release and For Post Vacuum or Dary Mode	Use Heavy Duty Multi-port Valve
Self Steam Generator System	SS 304 Boiler With Heater
Pre-Vacuum or High Vacuum	Yes
Water in Boiler	Distilled / Normal Water
Heater	Industrial Immersion Type Water Heater
Working Pressure	Variable 15 to 34 PSI
Working Temperature	121°C (up Graded up to 135°C)
Internal Chamber	Corrosion Resistant Stainless Steel SS 316
External Chamber	Corrosion Resistant 304 Grade Stainless Steel
Finishing	Mirror Finished Inner and External Surface SS 304 / 316L
All Piping	SS 316L
Door	Single or Double Doors SS 304
Insulation	Glass Wool Fiber 100mm
Sterilization Period	25 to 30 Minutes
Steam Exhaust	5 to 7 Minutes
Air Removed During The Vacuum Cycle	Decontaminated by Means of a HEPA Filter (Class H13 or Higher)
Dry	5 - 10 Minutes
Boiler	<ul style="list-style-type: none">• Made of SS 304 Sheet• Water Inlet & Outlet Valves• Water Level Glass Window• Boiler Safty Valve• With ISI Marked Water Immersion Type Industrial Heating Elements.
Chamber Condensate Line	Fitted With Steam Trap & NRV Value
Hydraulic Tested	On 50 psi
Sensor	PT 100
Temperature	Digital DispalY
Temperature indication	+1 % Accuracy
Jacket Pressure	Use Pressure Gauge
Chamber Pressure (for Positive Pressure)	Use Compound Gauge (for Positive & Negative Pressure)
Pressure Indication	+1.6 % Accuracy
Safety Value	For Excess Pressure Inside Chamber, Jacket and Steam Generator.
Mechanical Time w / Alarm	Regulates Sterilization Time and Activates Buzzer When Steilization Cycle Completes
Standard Accessories	<ul style="list-style-type: none">• SS 304 Sterilizing Tray x 1pcs• Water Level Glass Tube x 2pcs• Heating Element x 1 pc• Silicone Door Seal x 1pc
Optional Accessories	<ul style="list-style-type: none">• PLC Operation• Vacuum Drying• Printer• Auto Add Water• Door Interlock• Automatic Pressure Control Switch• Water Cut-off• Temperature Indicator• Caster Wheels
Power Supply	220 Volts / 440 Volts (Three Phase)

FEATURES & BENEFITS:

- Cylindrical Horizontal Autoclave
- Stainless steel interior and exterior
- Triple walled construction
- Self-locking safety door – cannot be opened when chamber is under pressure
- Standard temperature 121°C to 134°C
- Working pressure 15 psi to 34 psi
- Silicon jointless rubber door gasket
- Automatic pressure control switch
- Vacuum breaker • Steam trap & NRV • ISI safety valves
- Digital Temperature controller with Timer and alarm (buzzer)
- Automatic water level cut-off
- Water level Glass to Check Water Level
- SS Pressure & Compound gauges
- ISI marked flange / immersion heating elements



NEXX-002

Size of Vertical Autoclave

INNER CHAMBER IN MM	INNER CHAMBER IN INCHES	CAPAC ITY IN LTR	LOAD (KW)
400 x 600 MM	16" X 24"	78	6-8
400 X 900 MM	16" X 36"	120	8-10
400 X 1200 MM	16" X 48"	165	9
500 X 600 MM	20" X 24"	120	8
500 X 900 MM	20" X 36"	165	9
500 X 1200 MM	20" X 48"	250	12
550 X 1300 MM		310	

Fully Automatic LCD Controller Based Fully Covered Autoclave Model No.: NEXX-LCD01

NEXXGEN SURGICAL, Have Comprehensive Range of Horizontal Autoclaves. Fully Automatic Cylindrical Horizontal Autoclave Will Be Front Loading and in Horizontal Shape with Layer With Boiler.

These High Pressure Front Loading Autoclaves Play Important Role in Sterilization Procedures Required in Hospitals, Pharmaceutical Companies, Biopharma and Microbiology Laboratories.

NEXXGEN SURGICAL Horizontal Autoclave Units Are Made Of Stainless Steel To Ensure Corrosion Resistance Surface Triple Walled Construction Ensures Excellent Level Of Safety. Boiler Is Fitted Separately And Connected To The Chamber Water Level Indicator Is Also Attached To The Boiler With Automatic Low Water Cut-off

User Can Easily Set The Desired Temperature With The Help Of Digital Controller Fitted On The Front Side Of The Unit We Provide Radial Locking Pressure Door With Silicon Gas Kit We Use Automatic Pressure Control Switch And User Easily Can Set Temperature By Digital Controller Our Machine Work With Pressure Between 15-34 Psi.

FEATURES & BENEFITS:

- Fully Automatic Cylindrical Horizontal Autoclave
- FULLY COVERED AUTOCLAVE
- LCD BASED MICROPROCESSOR CONTROLLER
- Thermal Printer
- ELECTRIC Solenoid Valve
- HEAVY Vacuum EJECTOR
- Water Filling Pump
- Pre Vacuum
- Post Vacuum
- Stainless steel interior and exterior
- Triple walled construction
- Steam Stored in Jacket
- Inner Chamber made by Ss316
- Jacketed & Outer Made By Ss304
- All Piping Fitting Ss304
- Standard Temperature 121°C To 134°C
- Working Pressure 15 Psi To 34 Psi
- Silicon Jointless Rubber Door Gasket
- Automatic Pressure Control Switch
- Vacuum Breaker
- Steam Trap & NRV
- ISI Safety Valves
- Digital Temperature Controller With Timer And Alarm (buzzer)
- Automatic Water Level Cut-off
- Water Level Glass To Check Water Level
- SS Pressure & Compound Gauges
- ISI Marked Flange / Immersion Heating Elements



NEXX-LCD01

SIZE OF INNER CHAMBER	CAPACITY	LOAD
500 X 900MM	165LTR	12KW
500 X 1200MM	220LTR	12KW
550 X 1200MM	285LTR	18KW
600 X 1000MM	285LTR	18KW
600 X 1100MM	320LTR	18KW

Cylindrical Horizontal Fully Automatic Autoclave Model Number: NEXX-002A

NEXXGEN SURGICAL, Have Comprehensive Range Of Horizontal Autoclaves. Cylindrical Horizontal Autoclave Will Be Front Loading And In Horizontal Shape With Triple Layer With Boiler. These High Pressure Front Loading Autoclaves Play Important Role In Sterilization Procedures Required In Hospitals, Pharmaceutical Companies, Biopharma And Microbiology Laboratories Etc.

NEXXGEN SURGICAL Horizontal Autoclave Units Are Made Of Stainless Steel To Ensure Corrosion Resistance Surface. Triple Walled Construction Ensures Excellent Level Of Safety. Boiler Is Fitted Separately And Connected To The Chamber. Water Level Indicator Is Also Attached To The Boiler With Automatic Low Water Cut-off.

User Can Easily Set The Desired Temperature With The Help Of Digital Controller Fitted On The Front Side Of The Unit. We Provide Radial Locking Pressure Door With Silicon Gas Kit. We Use Automatic Pressure Control Switch And User Easily Can Set Temperature By Digital Controller. Our Machine Works With Pressure Between 15-34 PSI.

Our Horizontal autoclaves chamber and boiler are Hydraulic tested on 50 PSI

TECHNICAL SPECIFICATIONS

Model	NEXX-002A
Design	Cylindrical Horizontal Type
Construction	Triple Walled
Automation Hardware	PLC / HMI
Display	7"(inches) Touch Screen Multi-colour. The Information Shows In Display Like Cycle Stage, Chamber Temperature, Chamber Pressure, Jacket Pressure, Along With The Information About Failures And Interrupts.
Printer	Thermal Printer With Last 100 Cycle Storage Capacity.
Dry Chamber	Use Vacuum Pump For Chamber Dry <ul style="list-style-type: none">• Pre Vacuum• Post Vacuum• Chamber 100%
Working Pressure	Variable 15 to 34 PSI
For Over Pressure	Use Tri-Flag Pressure Switch
Working Temperature	121°C (up graded up to 150°C)
Inner Chamber	Corrosion Resistant Stainless Steel SS 316L
Outer Chamber	Corrosion Resistant 304 Grade Stainless Steel
Finishing	Mirror Finished Inner And External Surface
All Piping and Fittings	SS 304
Door	Single or Double SS 304
Insulation	Aluminum Silicate Which is the Best Insulating Material.
Sterilization Period	25 to 30 Minutes
For Water Level	Water Level Indicator
When Water Level Low	Low Water Level Sensor Indicate in Display WATER LEVEL LOW.
Steam Exhaust	5 to 7 Minutes
Dry	5 - 10 Minutes
Boiler	<ul style="list-style-type: none">• Made of SS 304 Sheet• Water Level Glass Tube x 2pcs• Heating Element x 1pc• Silicone Door Seal x 1pc
Chamber Condensate Line	Fitted with Steam Trap & NRV Valve
Hydraulic Tested	On 66 psi
Sensor	PT 100
Safety Valve	For Excess Pressure Inside Jacket and Steam Generator.
Mechanical Time w / Alarm	Regulates Sterilization Time and Activates Buzzer When Sterilization Cycle Completes.
Standard Accessories	<ul style="list-style-type: none">• SS 304 Sterilizing Tray x 1pc• Water Level Glass Tube x 2pcs• Heating Element x 1pc• Silicone Door Seal x 1pc
Power Supply	220 Volts / 440 Volts (Three Phase)

FEATURES & BENEFITS:

- Cylindrical Horizontal Autoclave
- Stainless Steel Interior And Exterior
- Triple Walled Construction
- Standard Temperature 121°C To 134°C
- Working Pressure 15 Psi To 34 PSI
- Silicon Jointless Rubber Door Gasket
- Automatic Pressure Control Switch
- Vacuum Breaker • Steam Trap & NRV
- ISI Safety Valves
- Digital Temperature Controller With Timer And Alarm (buzzer)
- Automatic Water Level Cut-off
- Water Level Glass To Check Water Level
- SS Pressure & Compound Gauges
- ISIMarked Flange / Immersion Heating Elements



NEXX-002A

Size of Cylindrical Horizontal Autoclave

INNER CHAMBER IN MM	INNER CHAMBER IN INCHES	CAPACITY IN LTR	LOAD (KW)
400 x 600 MM	16" X 24"	78	6-8
400 X 900 MM	16" X 36"	120	8-10
400 X 1200 MM	16" X 48"	165	10-12
500 X 600 MM	20" X 24"	120	8
500 X 900 MM	20" X 36"	165	9
500 X 1200 MM	20" X 48"	250	12

Semi Automatic Rectangular Horizontal Autoclave Model Number: NEXX-003

NEXXGEN SURGICAL, Have Comprehensive Range Of Semi Automatic Rectangular Horizontal Autoclaves. Semi Automatic Rectangular Horizontal Autoclave Will Be Front Loading, With Microprocessor Based And In Horizontal Rectangular Shape With Triple Layer With Boiler. These High Pressure Front Loading Autoclaves Play Important Role In Sterilization Procedures Required In Hospitals, Pharmaceutical Companies, Biopharma And Microbiology Laboratories Etc.

This Autoclave Will Be Used In Sterilization Of Wrapped Instruments, Unwrapped Instruments, Glassware, Liquids, Metal Instruments, Culture Medium And Laboratory Purpose.

NEXXGEN SURGICAL Rectangular Horizontal Autoclave Units Are Made Of Stainless Steel To Ensure Corrosion Resistance Surface. Tipple Walled Construction Ensures Excellent Level Of Safety. Boiler Is Fitted Separately And Connected To The Chamber. Water Level Indicator Is Also Attached To The Boiler With Automatic Low Water Cut-off.

User Can Easily Set The Desired Temperature With The Help Of Digital Controller Fitted On The Front Side Of The Unit. We Provide Radial Locking Pressure Door With Silicon Gas Kit. We Use Automatic Pressure Control Switch And User Easily Can Set Temperature By Digital Controller. Our Machine Work With Pressure Between 15-34 Psi.

Our Horizontal Autoclaves Chamber And Boiler Are Hydraulic Tested On 66 PSI.

TECHNICAL SPECIFICATIONS

Model	NEXX-003
Design	Rectangular Horizontal Type
Construction	Triple Walled
Automation Hardware	Microprocessor Based
Display	3.6"(Inches). The Information Shows in Display Like Chamber Temperature, Chamber Pressure, Jacket Pressure and Timer Buzzer.
Printer	Optional Feture (Thermal Printer)
Dry Chamber	Use Vacuum Pump for Chamber Dry <ul style="list-style-type: none">• Pre Vacuum• Post Vacuum• Chamber 100%
Working Pressure	Variable 15 to 34 PSI
For Over Pressure	Use TraFag Pressure Switch
Working Temperature	121°C and 134°C (Up Graded Up to 150°C)
Inner Chamber	Corrosion Resistant Stainless Steel SS 316L
Outer Chamber	Corrosion Resistant 304 Grade Stainless Steel
Finishing	Mirror Finished Inner and External Surface
All Piping and Fittings	SS 304
Door	Single or Double Doors SS 304
Insulation	Aluminum Silicate Which is the Best Insulating Material.
Sterilization Period	25 to 30 Minutes
For Water Level	Water Level Indicator
When Water Level Low	Low Water Level Sensor Indicate in Display Water Level Low.
Steam Exhaust	5 to 7 Minutes
Dry	5 - 10 Minutes
Boiler	<ul style="list-style-type: none">• Made of SS 304 Sheet• Water Inlet & Outlet Valves• Water Level Glass Window• Boiler Safety Valve• With ISI Marked Water Immersion Type Industrial Heating Elements.
Chamber Condensate Line	Fitted With Steam Trap & NRV Valve
Hydraulic Line	on 66 PSI
Sensor	PT 100
Safety Valve	For Excess Pressure Inside Jacket and Steam Generator.
Mechanical Time w / Alarm	Regulates Sterilization Time and Activates Buzzer When Sterilization Cycle Completes
Standard Accessories	<ul style="list-style-type: none">• SS 304 Sterilizing Tray X 1Pc• Water Level Glass Tube X 2Pc• Heating Element X 1Pc• Silicone Door Seal X 1Pc
Power Supply	220 Volts / 440 Volts (Three Phase)

FEATURES & BENEFITS:

- Rectangular Horizontal Autoclave
- Stainless Steel Interior And Exterior
- Triple Walled Construction
- Standard Temperature 121°C To 134°C
- Working Pressure 15 psi to 34 psi
- Silicon Jointless Rubber Door Gasket
- Automatic Pressure Control Switch Vacuum Breaker
- Steam Trap & NRV
- ISI Safety Valves
- Digital Temperature Controller With Timer And Alarm(buzzer)
- Automatic Water Level Cut-off
- Water Level Glass To Check Water Level
- SS Pressure & Compound Gauges
- ISI Marked Flange/immersion Heating Elements



NEXX-003

Size of Rectangular Horizontal Autoclave

INNER CHAMBER IN MM	INNER CHAMBER IN INCHES	CAPACITY IN LTR	LOAD (KW)
450 x 450 x 900 mm	18"x18"x36"(1.5x1.5x3FT)	180	10KW
450 x 600 x 900 mm	18"x24"x36"(1.5x2x3FT)	250	12KW
600 x 600 x 900 mm	24"x24"x36"(2x2x3FT)	320	18KW
600 x 600 x 1200 mm	24"x24"x48"(2x2x4FT)	430	18KW
600 x 900 x 1500 mm	24"x36"x60"(2x3x5FT)	810	24-27KW
Customized Size.....			

Fully Automatic Rectangular Horizontal Autoclave Model Number: NEXX-003B

NEXXGEN SURGICAL, have comprehensive range of Fully automatic Rectangular horizontal autoclaves. Fully automatic Rectangular horizontal autoclave will be front loading, with PLC/HMI Based and in Horizontal shape with triple layer with boiler. These high pressure front loading autoclaves play important role in sterilization procedures required in hospitals, pharmaceutical companies, biopharma and microbiology laboratories etc.

This Autoclave Will Be Used In Sterilization Of Wrapped Instruments, Unwrapped Instruments, Glassware, Liquids, Metal Instruments, Culture Medium And Laboratory Purpose.

NEXXGEN SURGICAL horizontal autoclave units are made of stainless steel to ensure corrosion resistance surface. Triple walled construction ensures excellent level of safety. Boiler is fitted separately and connected to the chamber. Water level indicator is also attached to the boiler with automatic low water cut-off.

User can easily set the desired temperature with the help of digital controller fitted on the front side of the unit. we provide radial locking pressure door with silicon gas kit. we use automatic pressure control switch and user easily can set temperature by Digital Controller. our machine work with pressure between 15-34 PSI.

Our Horizontal Autoclaves Chamber And Boiler Are Hydraulic Tested On 66 PSI.

TECHNICAL SPECIFICATIONS

Model	NEXX-003B
Design	Rectangular Horizontal Type
Construction	Triple Walled
Automation Hardware	PLC / HMI
Display	7" (Inches) Touch Screen Multi-Colour. The Information Shows in Display Like Cycle Stage, Chamber Temperature, Chamber Pressure, Jacket Pressure, Along with the Information About Failures and Interrupts.
Printer	Thermal Printer With Last 100 Cycle Storage Capacity.
Dry Chamber	Use Vacuum Pump for Chamber Dry <ul style="list-style-type: none">• Pre Vacuum• Post Vacuum• Chamber 100%
Working Pressure	Variable 15 to 34 PSI
For Over Pressure	Use TraFag Pressure Switch
Working Temperature	115°C and 138°C
Inner Chamber	Corrosion Resistant Stainless Steel SS 316L
Outer Chamber	Corrosion Resistant 304 Grade Stainless Steel
Finishing	Mirror Finished Inner and External Surface
All Piping and Fittings	SS 304
Door	Single or Double Doors SS 304 Hinges / Sliding
Insulation	Aluminum Silicate Which is the Best Insulating Material.
Sterilization Period	25 to 30 Minutes
For Water Level	Water Level Indicator
When Water Level Low	Low Water Level Sensor Indicate in Display Water Level Low.
Steam Exhaust	5 to 7 Minutes
Dry	5 - 10 Minutes
Boiler	<ul style="list-style-type: none">• Made of SS 304 Sheet• Water Inlet & Outlet Valves• Water Level Glass Window• Boiler Safety Valve• With ISI Marked Water Immersion Type Industrial Heating Elements.
Chamber Condensate Line	Fitted With Steam Trap & NRV Valve
Hydraulic Line	on 66 PSI
Sensor	PT 100
Safety Valve	For Excess Pressure Inside Jacket and Steam Generator.
Mechanical Time w / Alarm	Regulates Sterilization Time and Activates Buzzer When Sterilization Cycle Completes
Standard Accessories	<ul style="list-style-type: none">• SS 304 Sterilizing Tray X 1Pc• Water Level Glass Tube X 2Pc• Heating Element X 1Pc• Silicone Door Seal X 1Pc
Power Supply	220 Volts / 440 Volts (Three Phase)

FEATURES & BENEFITS:

- Rectangular Horizontal Autoclave
- Stainless Steel Interior And Exterior
- Triple Walled Construction • Standard Temperature 115°C To 138°C
- Working Pressure 15 psi to 34 psi
- Silicon Jointless Rubber Door Gasket
- Automatic Pressure Control Switch
- Vacuum Breaker • Steam Trap & NRV • ISI Safety Valves
- Digital Temperature Controller With Timer And Alarm(buzzer)
- Automatic Water Level Cut-off
- Water Level Glass To Check Water Level
- SS Pressure & Compound Gauges
- ISI Marked Flange/immersion Heating Elements



NEXX-003B

Size of Rectangular Horizontal Autoclave

INNER CHAMBER IN MM	INNER CHAMBER IN INCHES	CAPACITY IN LTR	LOAD (KW)
450 x 450 x 900 mm	18"x18"x36"(1.5x1.5x3FT)	180	12KW
450 x 600 x 900 mm	18"x24"x36"(1.5x2x3FT)	250	12KW
600 x 600 x 900 mm	24"x24"x36"(2x2x3FT)	320	18KW
600 x 600 x 1200 mm	24"x24"x48"(2x2x4FT)	430	18KW
600 x 900 x 1500 mm	24"x36"x60"(2x3x5FT)	810	24-27KW
Customized Size.....			

Sliding Door Fully Automatic Rectangular Horizontal Autoclave Model Number: NEXX-003BS

NEXXGEN SURGICAL, have comprehensive range of Fully automatic Sliding Door Rectangular horizontal autoclaves. Fully automatic Sliding Door Rectangular horizontal autoclave will be front loading and door automatically slid UP & DOWN, with PLC/HMI Based and in Horizontal shape with triple layer with boiler. These high pressure front loading Sliding Door autoclaves play important role in sterilization procedures required in hospitals, pharmaceutical companies, biopharma and microbiology laboratories etc.

This autoclave will be used in sterilization of wrapped instruments, unwrapped instruments, glassware, liquids, metal instruments, culture medium and laboratory purpose.

NEXXGEN SURGICAL horizontal autoclave units are made of stainless steel to ensure corrosion resistance surface. Triple walled construction ensures excellent level of safety. Boiler is fitted separately and connected to the chamber. Water level indicator is also attached to the boiler with automatic low water cut-off.

User can easily set the desired temperature with the help of digital controller fitted on the front side of the unit. we provide radial locking pressure door with silicon gas kit. we use automatic pressure control switch and user easily can set temperature by Digital Controller, our machine work with pressure between 15-34 PSI.

Our Horizontal Autoclaves Chamber And Boiler Are Hydraulic Tested On 66 PSI.

TECHNICAL SPECIFICATIONS

Model	NEXX-003BS
Design	Fully Automatic Sliding Door Rectangular Horizontal Type
Construction	Triple Walled
Automation Hardware	PLC / HMI
Display	7" (Inches) Touch Screen Multi-Colour. The Information Shows in Display Like Cycle Stage, Chamber Temperature, Chamber Pressure, Jacket Pressure, Along with the Information About Failures and Interrupts.
Printer	Thermal Printer With Last 100 Cycle Storage Capacity.
Dry Chamber	Use Vacuum Pump for Chamber Dry <ul style="list-style-type: none">• Pre Vacuum• Post Vacuum• Chamber 100%
Working Pressure	Variable 15 to 34 PSI
For Over Pressure	Use TraFag Pressure Switch
Working Temperature	121°C (up Graded up to 150°C)
Inner Chamber	Corrosion Resistant Stainless Steel SS 316L
Outer Chamber	Corrosion Resistant 304 Grade Stainless Steel
Finishing	Mirror Finished Inner and External Surface
All Piping and Fittings	SS 304
Door	Single or Double / Fully Automatic Sliding Door SS 304. (Door Slide Vertically UP & SOWN).
Insulation	Aluminum Silicate Which is the Best Insulating Material.
Sterilization Period	25 to 30 Minutes
For Water Level	Water Level Indicator
When Water Level Low	Low Water Level Sensor Indicate in Display Water Level Low.
Steam Exhaust	5 to 7 Minutes
Dry	5 - 10 Minutes
Boiler	<ul style="list-style-type: none">• Made of SS 304 Sheet• Water Inlet & Outlet Valves• Water Level Glass Window• Boiler Safety Valve• With ISI Marked Water Immersion Type Industrial Heating Elements.
Chamber Condensate Line	Fitted With Steam Trap & NRV Valve
Hydraulic Line	on 66 PSI
Sensor	PT 100
Safety Valve	For Excess Pressure Inside Jacket and Steam Generator.
Mechanical Time w / Alarm	Regulates Sterilization Time and Activates Buzzer When Sterilization Cycle Completes
Standard Accessories	<ul style="list-style-type: none">• SS 304 Sterilizing Tray X 1Pc• Water Level Glass Tube X 2Pc• Heating Element X 1Pc• Silicone Door Seal X 1Pc
Power Supply	220 Volts / 440 Volts (Three Phase)

FEATURES & BENEFITS:

- Fully Automatic Silding Door Rectangular Horizontal Autoclave
- Stainless Steel Interior And Exterior • Triple Walled Construction
- Standard Temperature 121°C To 134°C
- Working Pressure 15 psi to 34 psi
- Silicon Jointless Rubber Door Gasket
- Automatic Pressure Control Switch
- Vacuum Breaker • Steam Trap & NRV • ISI Safety Valves
- Digital Temperature Controller With Timer And Alarm(buzzer)
- Automatic Water Level Cut-off
- Water Level Glass To Check Water Level
- SS Pressure & Compound Gauges
- ISI Marked Flange/immersion Heating Elements



NEXX-003BS

Size of Rectangular Horizontal Autoclave

INNER CHAMBER IN MM	INNER CHAMBER IN INCHES	CAPACITY IN LTR	LOAD (KW)
450 x 450 x 900 mm	18"x18"x36"(1.5x1.5x3FT)	180	12KW
450 x 600 x 900 mm	18"x24"x36"(1.5x2x3FT)	250	12KW
600 x 600 x 900 mm	24"x24"x36"(2x2x3FT)	320	18KW
600 x 600 x 1200 mm	24"x24"x48"(2x2x4FT)	430	18KW
600 x 900 x 1500 mm	24"x36"x60"(2x3x5FT)	810	27KW
Customized Size.....			

Table Top Ethylene Oxide Gas Sterilizer Model Number : NEXX-004A

NEXXGEN SURGICAL, Table Top Ethylene Oxide Gas Sterilizers (ETO) are specifically designed to perform sterilization of temperature sensitive products. Our Sterilizer can be used both in Pharmaceutical and Parapharmaceutical industries and even in a wide range of medical and laboratory applications.

MAIN APPLICATIONS

- Syringes, Catheters, Cartridges for dialysis
- Plastic Articles

- Bandages, Sutures
- Use by Laparoscopy Surgeon, Ophthal Surgeon
- Use by Ortho Surgeon, Pediatric Surgeon

NEXXGEN SURGICAL manufacturing Ethylene Oxide Gas Sterilizers (ETO) as per the norms of the international standards and use branded parts and components. Material use in manufacturing only Stainless Steel (JINDAL) Mate and Mirror Finish both. Grade Use Only SS316 and SS304.

NEXXGEN Ethylene Oxide Gas Sterilizers Chamber tested under -600PSI Vacuum tested.

TECHNICAL SPECIFICATIONS

Model	NEXX-004A
Design	Rectangular Horizontal Type
Construction	Complete Stainless Steel
Inner Chamber	Made by SS 316
Outer and All Piping	Made by SS 304
Automation Hardware	PLC / HMI
Chamber Operating Pressure	Negative Pressure Cycle
Chamber Testing Pressure	1.0 Kg / cm ²
Operating Temperature	Maximum: 65°C (chamber)
Single Door	SS 304
Door Locking	Manual / Automatic Pressure Locking System
Gasket	Jointless Silicon Gasket
Finishing	Mirror Finished Inner and External Surface Mate/Mirror.
Insulation	Glass Wool Fiber 50mm
Sterilization Period	6-7 Hours
Heating	Heaters on all side of the Chamber for uniform heating throughout the load.
Temperature Sensor	For accurate measuring and controlling of Temp. in the chamber
Pressure Transmitter	For measuring and controlling the pressure-vacuum that the load is subjected to during removal and charging of gas.
All Valves for Automation	JANATICS Pneumatic Solenoid Valves.
Sensor	PT 100
Heater	ESCORT
Compressor	oil Free
Vacuum Pump	Inbuilt
Standard Accessories	<ul style="list-style-type: none"> • SS 304 Loading Basket x 1 pc • Sealing Machine x 1 pcs • ETO Paper Roll 20cm x 1pc • ETO Cartridges x 10pc • Air Blow Gun x 1pc
Power Supply	220 Volts (single Phase)

FEATURES & BENEFITS:

- Fully automatic One touch operated machine
- Thermal printer • Inbuilt vacuum pump • Inbuilt Air Compressor
- Rectangular chamber
- Stainless steel interior and exterior
- Standard temperature 35°C to 65°C
- Working pressure is -500 PSI.
- Silicon jointless rubber door gasket
- Manual/Automatic door lock
- Automatic Ethylene Cartridges puncher system.
- ISI marked flange/immersion heating elements

Small ETO Sterilizer (e.g 25-150Ltr) has been specially designed for Super Specialty and Multi-Specialty Hospitals capable for sterilizing all major medical devices.



NEXX-004A

Size of Rectangular Horizontal Autoclave

INNER CHAMBER IN MM	INNER CHAMBER IN INCHES	CAPACITY IN LTR	LOAD (KW)
310x310x310mm	12" x 12" x 12"	25LTR	1
310x310x600mm	12" x 12" x 24"	57LTR	2
310x310x900mm	12" x 12" x 36"	86LTR	3
310x310x1200mm	12" x 12" x 48"	115LTR	4
310x310x1350mm	12" x 12" x 54"	130LTR	4.5
310x310x1500mm	12" x 12" x 60"	145LTR	5

Ethylene Oxide Gas Sterilizer Model Number: NEXX-004B

NEXXGEN SURGICAL, Ethylene Oxide Gas Sterilizers (ETO) are specifically designed to perform sterilization of temperature sensitive products. Our Sterilizer can be used both in Pharmaceutical and Parapharmaceutical industries and even in a wide range of medical and laboratory applications.

MAIN APPLICATIONS

- Syringes, Catheters, Cartridges for dialysis
- Plastic Articles

- Bandages, Sutures
- Use by Laparoscopy Surgeon, Ophthal Surgeon
- Use by Ortho Surgeon, Pediatric Surgeon

NEXXGEN SURGICAL manufacturing Ethylene Oxide Gas Sterilizers (ETO) as per the norms of the international standards and use branded parts and components. Material use in manufacturing only Stainless Steel (JINDAL) Mate and Mirror Finish both. Grade Use Only SS316 and SS304.

NEXXGEN Ethylene Oxide Gas Sterilizers Chamber tested under-600PSI Vacuum tested.

TECHNICAL SPECIFICATIONS

Model	NEXX-004B
Design	Rectangular Horizontal Type
Construction	Complete Stainless Steel
Inner Chamber	Made by SS 316
Outer and All Piping	Made by SS 304
Automation Hardware	PLC / HMI (4 & 7 INCHES)
Chamber Operating Pressure	Negative Pressure Cycle
Chamber Testing Pressure	1.0 Kg / cm ²
Operating Temperature	Maximum: 65°C (chamber)
Single Door	SS 304
Door Locking	By 2Kg Pressure Automatic Locking System
Gasket	Jointless Silicon Gasket
Finishing	Mirror Finished Inner and External Surface Mate/Mirror.
Insulation	Glass Wool Fiber 50mm
Sterilization Period	6-7 Hours
Heating	Heaters on all side of the Chamber for uniform heating throughout the load.
Temperature Sensor	For accurate measuring and controlling of Temp. in the chamber
Pressure Transmitter	For measuring and controlling the pressure-vacuum that the load is subjected to during removal and charging of gas.
All Valves for Automation	JANATICS Pneumatic Solenoid Valves.
Sensor	PT 100
Heater	ESCORT
Compressor	Oil Free
Vacuum Pump	Inbuilt (OIL FREE)
Standard Accessories	<ul style="list-style-type: none">• SS 304 Loading Basket x 1 pc• Sealing Machine x 1 pcs• ETO Paper Roll 20cm x 1pc• ETO Cartridges x 10pc• Air Blow Gun x 1pc
Power Supply	220 Volts (single Phase)

FEATURES & BENEFITS:

- Fully automatic One touch operated machine
- Thermal printer • Inbuilt vacuum pump • Inbuilt Air Compressor
- Rectangular chamber
- Stainless steel interior and exterior
- Standard temperature 35°C to 65°C • Working pressure is -500 PSI.
- Silicon jointless rubber door gasket • Manual/Automatic door lock
- Automatic Ethylene Cartridges puncher system.
- ISI marked flange/immersion heating elements

Small ETO Sterilizer (e.g 25-150Ltr) has been specially designed for Super Specialty and Multi-Specialty Hospitals capable for sterilizing all major medical devices.



NEXX-004B

Size of Rectangular Horizontal Autoclave

INNER CHAMBER IN MM	INNER CHAMBER IN INCHES	CAPACITY IN LTR	LOAD (KW)
310x310x310mm	12" x 12" x 12"	25LTR	1
310x310x600mm	12" x 12" x 24"	57LTR	2
310x310x900mm	12" x 12" x 36"	86LTR	3
310x310x1200mm	12" x 12" x 48"	115LTR	4
310x310x1350mm	12" x 12" x 54"	130LTR	4.5
310x310x1500mm	12" x 12" x 60"	145LTR	5

Industrial Ethylene Oxide Gas Sterilizer Model Number: NEXX-IETO-01

NEXXGEN SURGICAL, Industrial Ethylene Oxide Gas Sterilizers (Also Known as EO or ETO) are specifically designed to perform sterilization of temperature sensitive products. Our Sterilizer can be used both in Pharmaceutical and Parapharmaceutical industries and even in a wide range of medical and laboratory applications.

MAIN APPLICATIONS

- Syringes, Catheters, Cartridges for dialysis
- Plastic Articles
- Bandages, Sutures
- All disposable items used in hospitals

NEXXGEN SURGICAL manufacturing Industrial Ethylene Oxide Gas Sterilizers as per the norms of the international standards and use branded parts and components. Material use in manufacturing only Stainless Steel (JINDAL) Mate and Mirror Finis both. Grade Use Only SS316 and SS304.

Industrial Ethylene Oxide Gas Sterilizers are two Type.

- First is manufactured in Triple walled with separate boiler system. Boiler System has used for uniform heat in chamber. Also provide dilution tank for ethylene Oxide.
- Second is manufactured in Double walled with Heater. Heater used for uniform heat in chamber.

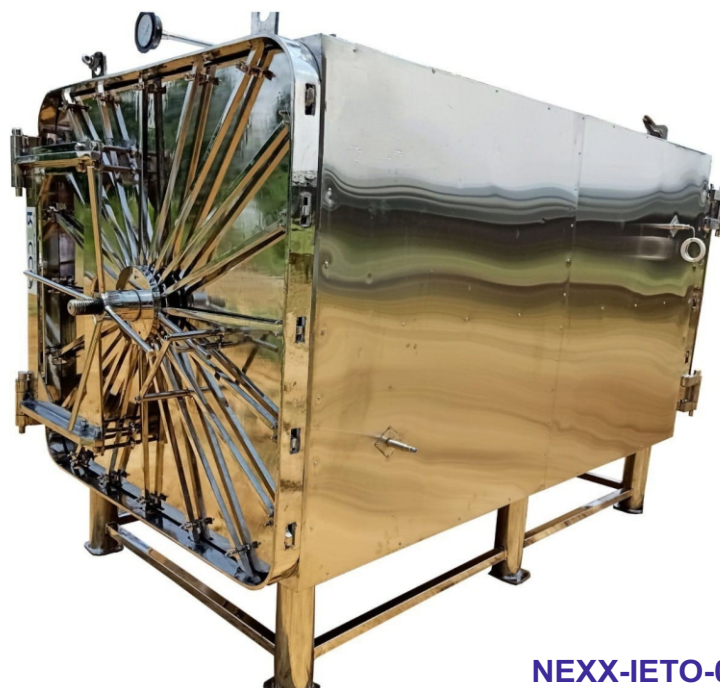
NEXXGEN Ethylene Oxide Gas Sterilizers Chamber tested under-600PSI Vacuum tested.

FEATURES & BENEFITS:

- Fully automatic One touch operated machine
- Thermal printer
- Inbuilt vacuum pump
- Inbuilt Air Compressor
- Rectangular chamber
- Stainless steel interior and exterior
- Standard temperature 35°C to 65°C
- Working pressure is -300 to -400 PSI.
- Silicon jointless rubber door gasket
- Manual door lock
- Ethylene Cylinder use for Ethylene Gas.
- ISI marked flange/immersion heating elements Use in Boiler

TECHNICAL SPECIFICATIONS

Model	NEXX-IETO-01
Design	Rectangular Horizontal Type
Construction	Complete Stainless Steel
Inner Chamber	Made by SS 316
Outer and All Piping	Made by SS 304
Automation Hardware	PLC / HMI
Chamber Operating Pressure	Negative Pressure Cycle
Chamber Testing Pressure	1.0 to 1.5 Kg / cm ²
Chamber Operating Temp	Maximum: 65°C (Chamber)
Jacket Testing Pressure	3.0 Kg/cm ²
Single / Double Door	SS 304
Door Locking	Manual Door Locking System
Gasket	Jointless Silicon Gasket
Finishing	Mirror Finished Inner and External Surface Mate/Mirror.
Insulation	Glass Wool Fiber 50mm
Sterilization Period	6-7 Hours
Heating	by Boiler
Temperature Sensor	For accurate measuring and controlling of Temp. in the chamber
Pressure Transmitter	For measuring and controlling the pressure-vacuum that the load is subjected to during removal and charging of gas.
All Valves for Automation	JANATICS Pneumatic Solenoid Valves.
Sensor	PT 100
Heater	ESCORT in Boiler
Water Pump	1HP Cromton
Vacuum Pump	Inbuilt
Standard Accessories	<ul style="list-style-type: none">• SS 304 Loading Basket x 1 pc• Sealing Machine x 1 pcs• ETO Paper Roll 20cm x 1pc
Power Supply	220 Volts (single Phase)



NEXX-IETO-01

SIZE of ETO STERILIZER

SIZE IN FEET W x H x L	CAPACITY IN LTR	VOLUMETRIC CAPACITY IN CFT	VACUUM PUMP	WATER CIRCULATION PUMP	ELECTRIC HEATERS LOAD
2x2x4	430LTR	15	1HP	0.5HP	4KW
2x2x5	550LTR	19	1HP	0.5HP	4KW
3x3x6	1460LTR	51	1.5HP	0.5HP	6KW
4x4x8	3500LTR	123	2HP	1HP	12KW
5x5x10	6750LTR	238.5	3HP	1HP	12KW to 18KW
6x6x16	15550LTR	549.5	5HP	2HP	18KW to 24KW

BIO-MEDICAL WASTE TREATMENT CYLINDRICAL/ RECTANGULAR HORIZONTAL AUTOCLAVE Model Number: NEXX-BMW01

NEXXGEN SURGICAL, have comprehensive range of horizontal autoclaves for BIO-MEDICAL WASTE TREATMENT. Cylindrical/Rectangular Horizontal autoclave will be front loading and in Horizontal shape with triple layer with self steam generator or boiler. These high pressure front loading autoclaves play important role in BIO-MEDICAL WASTE TREATMENT procedures required in hospitals and in BIO-MEDICAL WASTE TREATMENT plants etc.

NEXXGEN SURGICAL BIO-MEDICAL WASTE TREATMENT autoclave units are made of stainless steel to ensure corrosion resistance surface. Tipple walled construction ensures excellent level of safety. Boiler is fitted separately and connected to the chamber. Water level indicator is also attached to the boiler with automatic low water cut-off.

User can easily set the desired temperature with the help of digital controller/HMI fitted on the front side of the unit. we provide radial locking pressure door with silicon gas kit. we use automatic pressure control switch and user easily can set temperature by Digital Controller, our machine work with pressure between 15-34 PSI.

Our BIO-MEDICAL WASTE TREATMENT autoclaves chamber and boiler are Hydraulic tested on 66 PSI.

TECHNICAL SPECIFICATIONS

Model	NEXX-BMW01
Design	Cylindrical / Rectangular Horizontal Type
Construction	Triple Walled
Valve for Jacket to chamber Transfer, Chamber Release and for Post Vacuum or day mode	Use Heavy duty multiport or Valve
Self Steam Generator System	SS 304 boiler with Heater
Pre-Vacuum or High Vacuum	Yes
Water in Boiler	Distilled/Normal Water
Heater	Industrial Immersion Type water heater
Working Pressure	Variable 15 to 34 PSI
Working Temperature	121°C (up graded up to 135°C)
Internal Chamber	Corrosion Resistant Stainless Steel SS 316
External Chamber	Corrosion Resistant 304 Grade Stainless Steel
Finishing	Mirror finished inner and external surface SS 304/316L
All Piping	SS 316L
Door	Single or Double Doors SS 304
Insulation	Glass wool Fiber 100mm
Sterilization Period	25 to 30 Minutes
Steam Exhaust	5 to 7 Minutes
Air removed during the vacuum cycle	Decontaminated by means of a HEPA filter (Class H13 or higher)
Dry	5-10 Minutes
Boiler	<ul style="list-style-type: none">• Made of SS 304 sheet• Water inlet & outlet valves• Water level glass window• Boiler safety valve• With ISI marked water immersion type industrial heating elements.
Chamber Condensate Line	Fitted with steam trap & NRV valve
Hydraulic Tested	on 66 psi
Sensor	PT 100
Temperature	Digital Display
Temperature Indication	±1% accuracy
Jacket Pressure	Use Pressure Gauge
Chamber Pressure (for positive pressure)	Use Compound Gauge(for Positive & Negative Pressure)
Pressure Indication	±1.6% accuracy
Safety Valve	For excess pressure inside Chamber, jacket and steam generator.
Mechanical Time w / Alarm	Regulates sterilization time and activates buzzer when sterilization cycle completes
Standard Accessories	<ul style="list-style-type: none">• SS 304 Sterilizing tray x 1pc• Water level glass tube x 2pcs• Heating element x 1pc• Silicone door seal x 1pc
Optional Accessories	<ul style="list-style-type: none">• PLC operation• Vacuum drying• Printer• Auto add water• Door interlock• Automatic Pressure control switch• water cut-off• Temperature indicator• Caster wheels
Power Supply	220 Volts/440 Volts (Three Phase)

FEATURES & BENEFITS:

- Cylindrical/Rectangular Horizontal Autoclave
- Stainless steel interior and exterior
- Triple walled construction
- Self-locking safety door - cannot be opened when chamber is under pressure
- Standard temperature 121°C to 134°C
- Working pressure 15 psi to 34 psi
- Silicon jointless rubber door gasket
- Automatic pressure control switch
- Vacuum breaker • Steam trap & NRV • ISI safety valves
- Digital Temperature controller with Timer and alarm (buzzer)
- Automatic water level cut-off
- Water level Glass to Check Water Level
- SS Pressure & Compound gauges
- ISI marked flange / immersion heating elements



NEXX-BMW01

Size of Cylindrical/Rectangular Horizontal Autoclave
INNER CHAMBER IN MM INNER CHAMBER
IN INCHES CAPACITY IN LTR LOAD(KW)

400 X 600 MM	16" X 24"	78	6-8
400 X 900 MM	16" X 36"	120	8-10
400 X 1200 MM	16" X 48"	165	9
500 X 600 MM	20" X 24"	120	8
500 X 900 MM	20" X 36"	165	9
500 X 1200 MM	20" X 48"	250	12
550 X 1300 MM	22" X 52"	310	18

INNER CHAMBER IN MM INNER CHAMBER
IN INCHES CAPACITY IN LTR LOAD(KW)

450 X 450 X 900 MM	18" X 18" X 36"	(1.5 X 1.5 X 3FT)	180	10KW
450 X 600 X 900 MM	18" X 24" X 36"	(1.5 X 2 X 3FT)	250	12KW
600 X 600 X 900 MM	24" X 24" X 36"	(2 X 2 X 3FT)	320	18KW
600 X 600 X 1200 MM	24" X 24" X 48"	(2 X 2 X 4FT)	450	18KW
600 X 900 X 1500 MM	24" X 36" X 60"	(2 X 3 X 5FT)	810	24-27KW

Customized Size.....

Mortuary Chamber Model Number: NEXX-MC01

NEXXGEN SURGICAL, is manufacturer of Mortuary Chamber for storing cadaverous under low temperature cool conditions in order to prevent decomposition. Mortuary chambers have multiple names such as dead body freezer, mortuary cabinets, mortuary freezers, dead body storage freezer and body storage freezer. Mortuary Chamber Cabinet are double walled with outer made of SS 304 and inner walls made of SS 316. Tray is made of SS 304 to carry dead bodies. Trays of our Dead Body Cabinet travel on rollers fitted with ball bearings for easy movement. We provide hermetically sealed compressor Serves Refrigeration Unit and air conditioner unit use VOLTAS, BLUE STAR etc.

We provide digital microprocessor temperature indicator cum Controller to show temperature. Temperature range of mortuary chamber are -2°C to 10°C AND 8°C to -10°C CUSTOMISED.

Mortuary cabinets have a wide application and are used in hospitals, airports, research centers and many other agencies that may have a requirement to preserve a human body before being used in research or transported to destination.

The primary use of a mortuary chamber is to store and prevent a body from decomposing rapidly. Sometimes, it happens that a body has to be kept for long duration because of unexpected circumstances.

Technical specification of 4 Body Mortuary Cooling Chamber:

- Chamber storage temperature (-2°C to 10°C AND 8°C to -10°C Cooling)
- Inner/outer cabinet is made of stainless steel grade. ss304. (Sturdy construction)
- Puff insulation 100mm
- Microprocessor based temperature controller
- The cooling chamber system should be fans shut off & Interior proper LED lighting ON during door opening.
- Audio visual alarm for high & low temperature.
- Dead bodies trays with handles and travel roller fitted with ball bearing.
- The floor constructed out hardened and rain forced steel sheets containing spills for easy cleaning & hygiene (proper drain provide)
- Energy efficient & low maintenance
- Front panel of the units comprises of on/off switches cooling and main indication lamps, temperature controller, voltmeter, ammeter
- Interior led lighting
- Casters Swivel locking castors
- Superior engineered frame for maximum rigidity and low noise level <60dB
- Strong and reliable with powerful quick response quick response refrigeration, and exclusive long life process is a unique feature of mortuary cabinet
- Heavy duty air cooled non CFC compressor
- Auto defrosting system
- ALL control like 1 pc, hpc, volt guard protection etc should be provide
- The condensing unit & outdoor unit is around 10-20 feet
- Warranty period minimum one year

TECHNICAL SPECIFICATIONS

Model	NEXX-MC01
Design	Rectangular Horizontal Type
Construction	Double Walled
Working temperature	-2°C to 10°C AND 8°C to -10°C
Internal Chamber	Stainless Steel SS 316
External Chamber	Stainless Steel 304 Grade
Tray	Stainless Steel 304 Grade
Finishing	Mirror finished inner and external surface
Door Construction	SS 304
Insulation	Puff 60mm
Sterilization Period	25 to 30 Minutes
Temperature Sensor	PT 100
Display	LCD/LED
Refrigerant (Condenser)	Cfc free
Air Circulation (Condenser)	Efficient condenser with automatic evaporating system (condensate) Forced
Controller (temperature)	PID
Body Capacity	1/2/3/4/6 (Customised)
Power Supply	220 V & 50/60 Hz
Cluster Wheel	Lockable



NEXX-MC01

Laminar Air Flow Model Number: NEXX-LAF01

NEXXGEN SURGICAL, are leading manufacturer, supplier and exporter of laminar air flow. we manufacturing Laminar Air Flow such as Vertical Laminar Air Flow and Horizontal Laminar Air Flow. A laminar air flow workstation is a closed cabinet fitted with HEPA filtered air flow system.

Laminar means unidirectional constant flow of air with almost no or minimal turbulence. The air flow velocity remains between 0.3 m/s to 0.5 m/s. The purpose of using such workstations in laboratory is to create particle and bacteria free working environment to carry out specialized work. As these units discharge air towards user, they provide no personal protection but product protection from room contaminants

Laminar Flow Cabinets, or laminar air flow cabinets as they are also known, are normally made of stainless steel with no gaps or joints thereby preventing the build-up of bacteria from collecting anywhere in the working zone.

Laminar Flow Cabinets are also known as clean benches because the air for the working environment is thoroughly cleaned by the precision filtration process.

HORIZONTAL LAMINAR AIR FLOW Cabinets receive their name due to the direction of air flow which comes from above but then changes direction and is processed across the work in a horizontal direction. The constant flow of filtered air provides material and product protection.

VERTICAL LAMINAR AIR FLOW Cabinets function equally well as horizontal Laminar Flow Cabinets with the laminar air directed vertically downwards onto the working area. The air can leave the working area via holes in flow cabinets can provide greater operator protection. the base. Vertical

HEPA FILTER filtered air through pre filter is forwarded towards HEPA FILTER. HEPA FILTER offers 99.99% efficiency for 0.3 micron particulates.

LAMINAR AIR FLOW APPLICATIONS:

- Life science research
- Microbiology
- Pathology lab
- Tissue culture
- Pharmaceutical
- Musroom Spam Lab
- Laboratory
- Electronic and industrial sectors

TECHNICAL SPECIFICATIONS

Model	NEXX-LAF01
Design	Rectangular Horizontal Type
Construction	SS 304 / Powder coated MS / GI sheet
Air flow direction	Horizontal/ Vertical
Pre-Filter	10 microns (washable)
HEPA filter	0.3 Microns(not washable it will change in 12 to 18 months)
Air velocity	0.45 m/s to 0.65 m/s
Front Door	Manual made by Acrylic transparent seat
Finishing	Mirror finished inner and external surface
Door	Single Door
Power Supply	220 volts / 50 Hz



NEXX-LAF01

Size of Laminar Air Flow

SIZE IN MM W X H X D	SIZE IN FEET W X H X D	CAPAC ITY IN LTR	HEPA FILTER SIZE/NO.	NO. OF PRE- FILTER
600X600X600	24" X 24" X 24"	216LTR	2FT X 2FT X 6Inch / #1	#1
900X600X600	36" X 24" X 24"	325LTR	3FT X 2FT X 6Inch / #1	#2
1200X600X600	48" X 24" X 24"	430LTR	4FT X 2FT X 6Inch / #1	#2
1800X600X600	72" X 24" X 24"	650LTR	3FT X 2FT X 6Inch / #2	#3
2400X600X600	96" X 24" X 24"	870LTR	4FT X 2FT X 6Inch / #2	#4

Hot Air Oven Model Number: NEXX-HAO01

NEXXGEN SURGICAL, are leading manufacturer, supplier and exporter of Hot Air Oven. The construction of hot air oven is double walled and made of 304 grades stainless steel with insulation of PUF for efficient thermal loss. In economical models, exterior chamber is made of powder coated MS, while 304 stainless steel is used as an option. Inner chamber is completely made of stainless steel 304, which is easy to clean and maintain. Shelves are made of painted steel and can be easily adjusted inside the chamber with ribs created inside the interior chamber walls.

Hot Air Oven temperature range 5°C above ambient to 250°C with accuracy of $\pm 2^{\circ}\text{C}$. Temperature is controlled by digital microprocessor based PID temperature controller. For uniform rotation of heat inside the chamber noise-less fan is used for air circulation. Each unit is fitted with over temperature protection device (safety thermostat), which keeps your oven and samples safe in case of controller failure.

Hot Air Oven doors are made in double walled with PUF Insulation and Hinge Type.

VENTILATION For safe removal of hot gases and fumes air ventilators are provided near the top of the both sides

LAMINAR AIR FLOW APPLICATIONS:

- It uses dry heat for sterilizing
- Has a digital thermostat to regulate temperature
- Double wall design to retain heat and reduce energy output
- No need for extra water during the process
- Smaller in size than the autoclaves
- Highly efficient and use less heat
- Used in laboratories to sterilize operating instruments
- Use in Mushroom Lab
- Use in Hospitals

TECHNICAL SPECIFICATIONS

Model	NEXX-HSO01
Design	Horizontal Type
Construction	Double Walled
Working Temperature	5°C to 250°C
Temperature Accuracy	$\pm 2^{\circ}\text{C}$
Temperature Uniformity	$\pm 1^{\circ}\text{C}$
Internal Chamber	Corrosion Resistant Stainless Steel SS 304
Finishing	Mirror finished inner and external surface
Outer Body	SS 304/ MS
All Trays	SS 304
Door	Single Doors double walled
Insulation	PUF 60MM
Controls	PID Controller
Temp Display	LED Display
Sensor	PT 100
Heating Element	ISI marked industrial heating elements.
Safety device	<ul style="list-style-type: none">• Over temperature protection• Electric leakage breaker
Power Supply	220 Volts



NEXX-HSO01

SIZE OF HOT AIR OVEN

SIZE IN MM W X H X D	SIZE IN FEET W X H X D	CAPAC ITY IN LTR	LOAD (KW)	SHELVE S(NO's)
300 x 300 x 300 mm	12" x 12" x 12"	30	1.5	2
355 x 355 x 355 mm	14" x 14" x 14"	45	1.5	2
455 x 455 x 455 mm	18" x 18" x 18"	95	2	2
455 x 455 x 605 mm	12" x 12" x 24"	125	2.2	3
605 x 605 x 605 mm	24" x 24" x 24"	225	2.5	3
605 x 455 x 910 mm	12" x 18" x 36"	252	2.5	3
605 x 605 x 910 mm	24" x 24" x 36"	336	3	3

Bacterial Incubator Model Number: NEXX-BOD01

NEXXGEN SURGICAL, are leading manufacturer, supplier and exporter of Bacteriological Incubator. The construction of Bacteriological Incubator is double walled and made of 304 grades stainless steel with insulation of PUF for efficient thermal loss. Double door. Outer metallic double walled and inner glass door. In economical models, exterior chamber is made of powder coated MS, while 304 stainless steel is used as an option. Inner chamber is completely made of stainless steel 304, which is easy to clean and maintain. Shelves are made of SS 304 and can be easily adjusted inside the chamber with ribs created inside the interior chamber walls.

Bacteriological Incubator heating elements are designed with low wattage density to work on black heat. The heaters are in coil form and supported with refractory, covers complete bottom to give uniform heating. Specially designed thermostat gives better temperature accuracy. A Digital Temperature Controller can be used for temperature control.

The temperature range of our bacterial incubators is ambient+10°C to 60°C, which is controlled through microprocessor based PID temperature controller and PT100 RTD sensor. This controller displays both Set Value (SV) and Process Value (PV). PSI.

Ideal temperature for incubation is 37°C

LAMINAR AIR FLOW APPLICATIONS:

- Has a digital thermostat to regulate temperature
- Double wall design to retain heat and reduce energy output
- No need for extra water during the process
- Smaller in size than the autoclaves
- Highly efficient and use less heat
- Used in laboratories to sterilize operating instruments
- Use in Mushroom Lab
- Use in Hospitals

TECHNICAL SPECIFICATIONS

Model	NEXX-BOD01
Design	Square/ Rectangular Horizontal Type
Construction	Double Walled
Working Temperature	Ambient + 5°C to 60°C
Temperature Accuracy	0.5% °C
Temperature Uniformity	1% of set value
Internal Chamber	Corrosion Resistant Stainless Steel SS 304
Finishing	Mirror finished inner and external surface
Outer Body	SS 304/ MS
All Trays	SS 304
Door	Single Doors double walled
Insulation	PUF 60MM/ Glass Wool 65 mm.
Controls	Digital Display Electronic Controller.
Ventilator	Adjustable type (Aluminum)
Sensor	PT 100
Heating Element	ISI marked industrial heating elements.
Safety device	<ul style="list-style-type: none">• Thermostat or Blind Controller• ON/OFF cycle.• Microprocessor based PID Controller• Forced air circulation
Power Supply	220 Volts



NEXX-BOD01

SIZE OF BACTERIOLOGICAL INCUBATOR

SIZE IN MM W X H X D	SIZE IN FEET W X H X D	CAPAC ITY IN LTR	SHELVE S(NO's)
300 x 300 x 300 mm	12" x 12" x 12"	30	2
355 x 355 x 355 mm	14" x 14" x 14"	45	2
455 x 455 x 455 mm	18" x 18" x 18"	95	2
455 x 455 x 605 mm	12" x 12" x 24"	125	3
605 x 605 x 605 mm	24" x 24" x 24"	225	3
605 x 455 x 910 mm	12" x 18" x 36"	252	3
605 x 605 x 910 mm	24" x 24" x 36"	336	3

Ultrasonic Cleaner

Model Number: NEXX-UC01

NEXXGEN SURGICAL, is recognized as one of the well-established manufacturers and exporters of ultrasonic cleaners for hospitals & laboratories. Ultrasonic cleaner is microprocessor based, efficient and effective equipment widely used for cleaning purposes in hospitals. The machine are manufactured by using high grade materials and are widely appreciated for their features like user friendly operations, excellent endurance capacity and optimum cleaning quality.

There are in all 3 cycles of operation in the ultrasonic tank:

- Water In, in which the water starts flowing in the tank for a preset time
- Ultrasonic, in which the objects are cleaned by ultrasonic cavitations
- Ultrasonic with Swinging, in which the basket containing the objects starts swinging in the ultrasonic tank and are thoroughly cleaned by dual action of ultrasonic cavitations and swinging movements.



NEXX-UC01

TECHNICAL SPECIFICATIONS

Model	NEXX-UC01
Design	Rectangular Horizontal Type
Working Chamber Material	SS 316
Outer Material	SS 304
Automation Grade	Semi / Automatic
Frequency	30+/-3 Khz
Thermostate	Digital
Finishing	Mirror finished inner and external surface
Heater	1000 WATTS, CARTRIDGE TYPE
Average Power Output	500 WATTS

30KG COMMERCIAL WASHING MACHINE





60KG COMMERCIAL WASHING MACHINE

Description

PRODUCT DETAILS:

Capacity Up to	: 60 kg
Area in square-mm	: 910x1220
Basket Length(mm)	: 1220
Basket width(mm)	: 910
Frequency	: 50-60Hz
Power Source	: Electric
Country of Origin	: Made in India
Warranty	: 1 years
Convenience	:to do laundry together
Efficiency	: 60 kg
Automation Grade	: Semi-Automatic
Phase	: 3
Voltage	: 410
Motor Power	: 3 hp
I Deal In	: New Only
Loading Type side	: side Loading
Usage/Application	: Related to laundry
Basket size in inch	: 36/48



LANGUAGE

- English
- Hindi

SKILLS SUMMARY

- Low water consumption
- Low Steam consumption
- Less time in Process
- More durability
- More Loading capacity

PERFORMANCE

Motor Brand	: N/A
Volt	: 410V
Rpm	: 32
VFD(Optional)	: Adjustable Drum Rotation 0-32 RPM
Forward/reverse	: Adjustable 0-60 Seconds
Beaters	:To improve wash Quality
Washing Time	: 0-60 min controlled by Timer
Temperature	: N/A
Control panel	: Manually Operated by Switch
Water level	: N/A

CATALOG FOR

COMMERCIAL WASHING MACHINE

MODEL NO. PSV100, PSV60 PSV50, PSV40, PSV30,

- Commercial washing machines play an important role in washing laundry clothes and washing one or more clothes.
- semi automatic washing machine
- Semi automatic comes at a higher price than automatic machine.
- Commercial washing machine drums are made from 1.2 mm (18 gauge) thick steel to withstand wear and tear over time. 8mm iron is applied on the side plate of the commercial washing machine drum, so that the drum does not tear quickly.
- The biggest problem in commercial washing machines is that their metal melts, keeping this in mind, our company gives you a steel in the lower body in this price range so that it does not melt quickly.



FEATURES

- More Loading capacity
- Low water consumption
- Low Steam consumption
- Less time in Process
- More durability

Capacity (KG)	Basket width(mm)	Basket Length(mm)	Area in square-mm	basket size in inch	Metal Type	Motor(HP)	MOTOR RPM	Panel Type	Power Source	Frequency
100	1020	1525	1020x1525	40/60	Stainless Steel	3	960	Semi-Automatic	Electric	50-60Hz
60	910	1220	910x1220	36/48	Stainless Steel	3	1440	Semi-Automatic	Electric	50-60Hz
50	910	1120	910x1120	36/45	Stainless Steel	3	1440	Semi-Automatic	Electric	50-60Hz
40	810	1110	810x1110	32/45	Stainless Steel	2	1440	Semi-Automatic	Electric	50-60Hz
30	660	910	660x910	26/36	Stainless Steel	1	1440	Semi-Automatic	Electric	50-60Hz
18	560	660	560x660	22/26	Stainless Steel	1	1440	Semi-Automatic	Electric	50-60Hz

Optional:

- (a) Semi automatic Based Controller
- (b) able to wash all types of clothes
- (c) Manual and automatic control panel

- Panel-Semi automatic
- Body Matel-S.S. J4 (202/304)
- Durm matel-S.S. J4 (202/304)
- capacity KG 30,40,50,60,100

LAUNDRY RELATED MACHINE

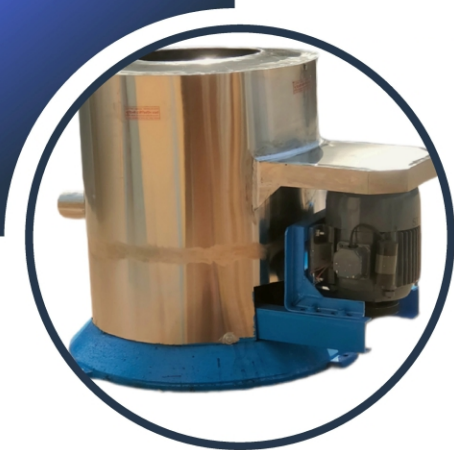
TUMBLE DRYER MACHINE



FEATURES

Capacity (KG)	Basket width(mm)	Basket Length(mm)	Area in square-mm		Metal Type	Motor (HP)	RPM	Power Source	Frequency
60	920	1260	920x1260		Stainless Steel	2	1440	Electric	50-60Hz
50	910	1220	910x1220		Stainless Steel	2	1440	Electric	50-60Hz
30	800	910	800x910		Stainless Steel	2	1440	Electric	50-60Hz
25	700	910	700x910		Stainless Steel	2	1440	Electric	50-60Hz

LAUNDRY RELATED MACHINE



15 INCH **HYDRO** DRYER MACHINE

Description

PRODUCT DETAILS:

Capacity Up to	: 12 kg
Area in square-mm	: 300x380
Basket Length(mm)	: 380
Basket width(mm)	: 380
Frequency	: 50-60Hz
Power Source	: Electric
Country of Origin	: Made in India
Warranty	: 1 years
Convenience	:to do laundry together
Efficiency	: 12 kg
Automation Grade	: Direct
Phase	: 3
Voltage	: 410
Motor Power	: 0.5 hp
I Deal In	: New Only
Loading Type side	: Top Loading
Usage/Application	: Related to laundry
Basket size in inch	: 12/15

NEXXGEN
SURGICALS



LANGUAGE

- English
- Hindi

PERFORMANCE

Motor Brand	: N/A
Volt	: 410V
Beaters	:To improve wash Quality
Temperature	: N/A

SKILLS SUMMARY

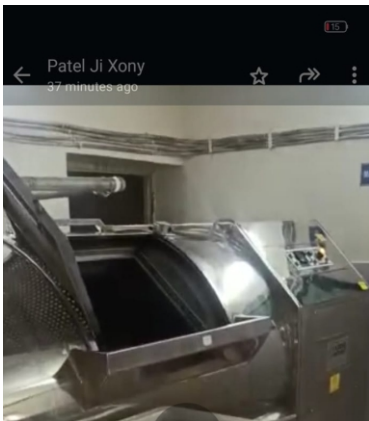
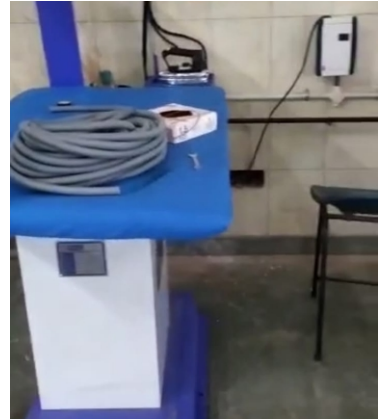
-
-
- Less time in Process
- More durability
- More Loading capacity



24 INCH **HYDRO** DRYER MACHINE

18 INCH **HYDRO** DRYER MACHINE







A complete CSSD solution for your hospital

Thank You!

NITIN KUMAR SHUKLA
Proprietor

 +91-7007800569

 nitinshukla.shukla2@gmail.com