



# EVEREST COMPOSITES PVT. LTD

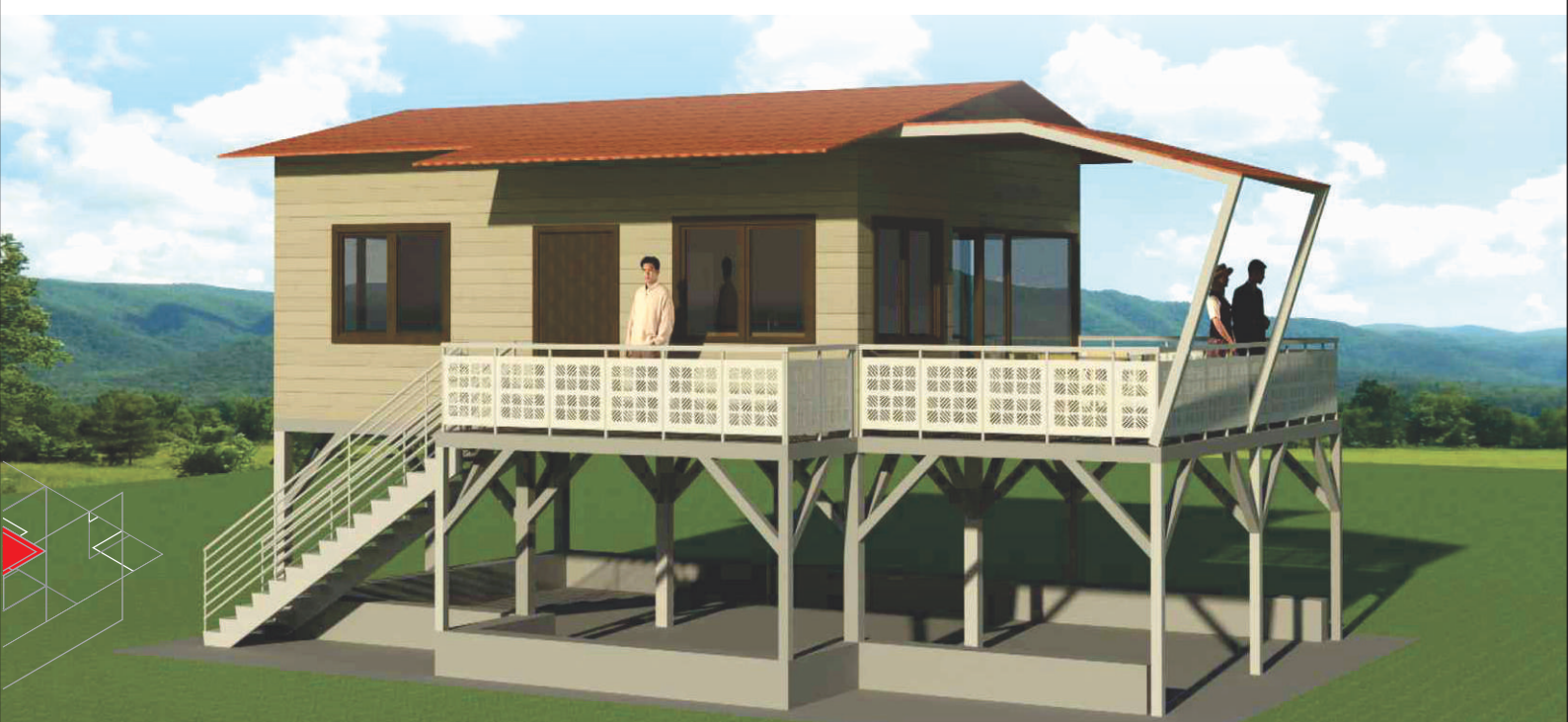
## PREFAB STRUCTURES & PANELS TURNKEY SOLUTIONS

FOR REAL ESTATE, INFRASTRUCTURE & INDUSTRIES



### 3 DECADES

*Redefining Construction*



FASTER COST EFFECTIVE

ELEGANT

AESTHETICS

HIGHLY DURABLE

RELOCATABLE



### CONCEPT TO EXECUTION

[everestpufpanel.com](http://everestpufpanel.com) | [everestcomposites.com](http://everestcomposites.com)



## ECPL

PREFAB  
STRUCTURES & PANELS  
TURNKEY SOLUTIONS

## OUR TEAM



## EVEREST INTRODUCTION

Everest Composites Pvt. Ltd. (ECPL) is involved in the manufacturing of composites products since 1991. ECPL is known for its strong technological capability and adaptability that are required to meet the constantly changing prerequisites of client. Everest is the only company with such a diverse production line under one roof.

## OUR DIVISIONS

- ▷ EVEREST GRC / GFRC
- ▷ EVEREST FRP / GRP
- ▷ EVEREST PREFAB
- ▷ FRP DOORS
- ▷ PPGI ROOFING SHEETS
- ▷ EVEREST FACADE & INFRASTRUCTURE

## TURNKEY (SOLUTIONS PROVIDER)

- ▷ DESIGN
- ▷ FABRICATION
- ▷ MANUFACTURING
- ▷ INSULATIONS
- ▷ COMPLETE FACADE EXECUTIONS



EXPERIENCED  
TEAM



RELIABLE & SECURE  
SERVICES



BEST  
VALUE PRODUCTS



25 YEARS  
EXPERIENCE

## OUR ASSOCIATIONS

**IIID**  
Indian Institute of Interior Designer

**CREDAI**  
Confederation of Real Estate  
Developers Association of India

**BAI**  
Builder Association of India

**RCBS**  
Rotary Club of Sayjinagari Vadodara  
(3016)

**IPVA**  
Indian Polyurethane Association

**JITO & JBN**  
Jain International Trade Organization

**BNI**  
Business Network International

**FGI**  
Federation of Gujarat Industries

## CERTIFICATE



TATA CHEMICAL



RIAI- ROYAL INSTITUTE OF THE  
ARCHITECTS OF IRELAND) -2018



TATA TRUST



DIVYA BHASKAR





ENVIRONMENT  
FRIENDLY  
PRODUCTS

MAINTENANCE  
FREE

EXCELLENT  
EDGE AND  
CORNER  
STRENGTH

IMPROVED  
SURFACE DETAILS  
AND QUALITY  
FINISH

## COMPOSITES PRODUCTS WITH CAPACITY

### GRC

(GLASSFIBRE  
REINFORCED  
CONCRETE)

CAPACITY

More than  
**7,50,000 Sq. Ft.**  
Per Annum

### FRP SHEETS

(FIBRE  
REINFORCED  
PLASTICS)

CAPACITY

More than  
**4,20,000m<sup>2</sup>**  
Per Annum  
(CLM : continuous  
laminating machine)

### FRP

(MOULDING)

CAPACITY

More than  
**1,00,000m<sup>2</sup>**  
Per Annum

### PREFAB & PUF PANEL

CAPACITY

More than  
**2,00,000 Sq. Ft.**  
Per Annum

**New facility under construction, currently using partial constructed facility for production**

**2 LAKH**  
SQ.FT. LAND

**60K +**  
MANUFACTURING AREA



3D IMAGE

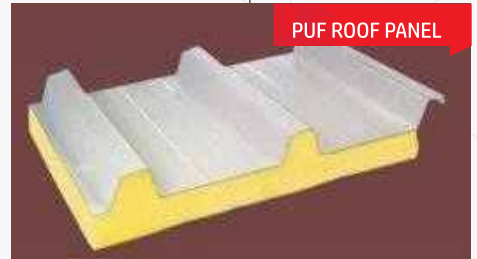
## EVEREST PREFAB STRUCTURE, INSULATED PANELS & DRY WALLS



EPS ROOF PANEL



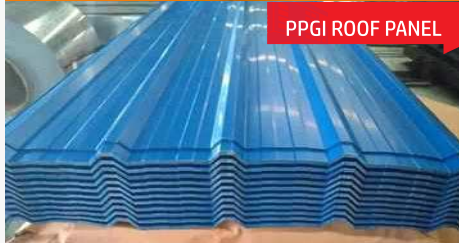
PUF WALL PANEL



PUF ROOF PANEL



ROCK WOOL WALL PANEL



PPGI ROOF PANEL



SOLID WALL PANEL



EPS WALL PANEL



STEEL FRAME



PURLINS



DRY WALL



COLUMN



WALL POLE



CEMENT SHEET



STAIRCASE



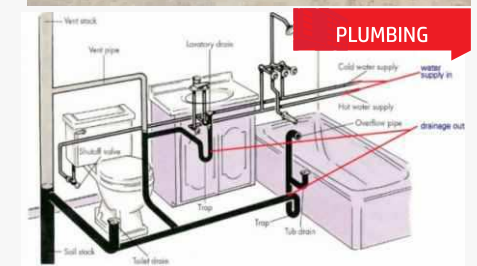
FLOOR



STRUCTURAL



ELECTRICAL



PLUMBING

Light steel frame has been used SINCE centuries, its properties are well known to all. The new PREFAB CONSTRUCTION methods have ensured that the Competitions, durable and long lasting.

### APPLICATIONS

- |                     |                  |                  |                  |                      |
|---------------------|------------------|------------------|------------------|----------------------|
| ▶ Hutments          | ▶ Guest House    | ▶ Terrace office | ▶ Project Office | ▶ Sample House       |
| ▶ Weekend Home      | ▶ Beach House    | ▶ Meeting Hall   | ▶ Workmen Colony | ▶ Security Cabins    |
| ▶ River Front House | ▶ Vacation House | ▶ Canteen        | ▶ Site Office    | ▶ Vending Booth/Shop |
| ▶ Portable House    | ▶ Terrace House  | ▶ Restaurant     | ▶ Elevated House | ▶ Toilet Block       |

**CUSTOMIZED DESIGNS & SPECIFICATIONS ARE OUR STRENGTH**



## ► SPECIFICATION OF PUF PANEL

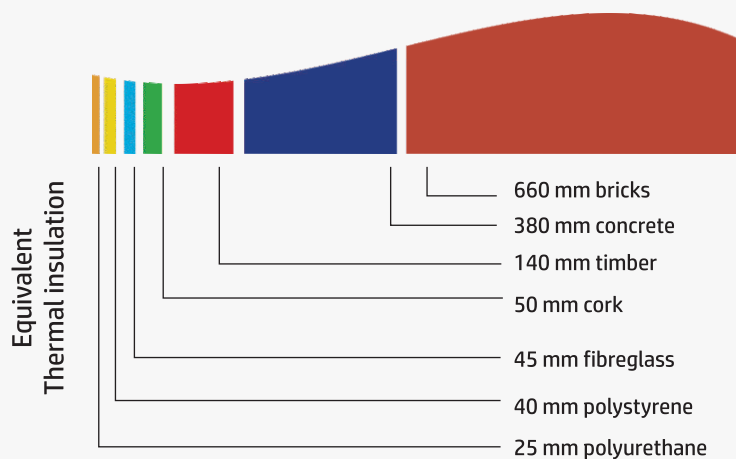
- Superior thermal & acoustic insulation
- **Temperature range** -90 Deg.\*c to +100 Deg.\*c
- Panel Thickness 40mm,50mm,60mm and up to 200mm

- **Density** : 40kgs/m<sup>3</sup> [ ± 2 kgs]
- **PPGI/PPGL Thickness (BMT):**  
0.4mm / 0.45mm / 0.5mm / 0.6mm / 0.8mm

## ► A4.3 INSULATION

Composed of rigid polyurethane foam, self-extinguishing In accordance with current European standards

### Comparative table of insulating materials



- Reaction to fire Class B2 or B3 in terms of DIN Standard 4102 Part 1
- Average Density 40kg/m<sup>3</sup> ± 0%
- Compression resistance ≥ 11N/cm<sup>2</sup> {at10% deformation}
- Resistance to stretching ≥ 1 N/cm<sup>2</sup>
- Resistance to cutting ≥ 1 N/cm<sup>2</sup>
- Coefficient of thermal conductivity l=0.022 Kcal/m.h.°c
- Non-hygroscopic because made up of over 95% closed cells
- Coefficient of heat transmission

For single- and double-skinned roofing panels	THICKNESS (MM)	30 mm	40 mm	50 mm	60 mm	80 mm	100 mm	120 mm
	Coeff. K(W/m <sup>2</sup> *°c)	0.55	0.44	0.36	0.31	0.25	0.20	0.16
	Coeff. K (kcal/h*m <sup>2</sup> *°c)	0.48	0.38	0.32	0.27	0.22	0.17	0.13

For single- and double-faced walling panels	THICKNESS (MM)	30 mm	40 mm	50 mm	60 mm	80 mm	100 mm	120 mm	150 mm
	Coeff. K(W/m <sup>2</sup> *°c)	0.64	0.50	0.40	0.34	0.26	0.21	0.18	0.14
	Coeff. K (kcal/h*m <sup>2</sup> *°c)	0.57	0.44	0.35	0.30	0.23	0.18	0.15	0.12

Following thickness Puf Panels is advisable to maintain temperature	PUF THICKNESS	40 MM	50 MM	60 MM	80 MM	100 MM	120 MM	150 MM	200 MM
	TEMPERATURE RANGE	20-25 C	15-20 C	10-15 C	0-10 C	upto -10 C	upto -22 C	upto -40 C	upto -90 C

## ► FEATURES



TERMITES  
RESISTANCE



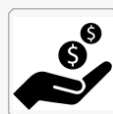
WEATHER  
RESISTANCE



LOW  
MAINTENANCE



QUICK  
INSTALLATION



COST  
EFFECTIVE



ECONOMICAL



DURABLE



WORKMEN COLONY

STAFFS QUATERS



CEMENT SOLID ROOMS PANEL



PUF PANEL COLONY



G+2 CEMENT SOLID PANEL COLONY



G+1 EPS PANEL COLONY



G+1 PUF PANEL COLONY



G+2 COLONY



## FACTORY BUILDING

PUF - PPGI PANEL SHED



## G+1 OFFICE



CEMENT SOLID PANEL

## STORE BUILDING



PUF PANEL

## TOILET BLOCK (PUF PANEL)



## PROJECT OFFICE FOR CORPORATE & CONSTRUCTION COMPANIES



### ► PROJECT OFFICE



## PREFAB SHELTERS

### 12 BEDS 2-TIER UNIT







1/2/3 BHK PREMIUM MODEL



1/2/3 BHK WEEKEND UNITS





TERRACE HOUSE



CLUB & SPORTS COMPLEX



HOSPITALS

HOSPITAL / GENERAL WARD





PHARMA CLEAN ROOM



CLEAN ROOM



LABORATORY

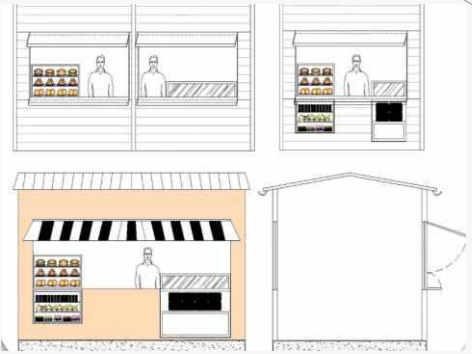


OPERATION THEATER

Cold Storage



## VENDING SHOPS



## RURAL AND GOVERNMENT SOLUTIONS



SCHOOL



## DEFENSE INFRASTRUCTURE SOLUTIONS



SOLID PANEL

PREFAB can provide a practical infrastructure Solution in the remote area for various defense authorities.



PROJECT: WELLNESS CENTRE AT KEVAIDA AT AROGYAN VAN  
SITE: STATUE OF UNITY



3D IMAGES

ACTUAL IMAGES



**Area** : Approx 10,000 sq.ft

**USP** : Complete turn key project foundation to complete interiors

**Method** : Prefabricated m.s. structures everest rapicon solid wall with decorative puf insulated panels.



**PROJECT** : RORO TERMINAL  
**SITE** : ADANI HAZIRA PORT, SURAT  
**METHOD** : Pre-Fabrecated & PPGI PUF Panles.

Supply, Installation  
and commissioning of  
PREFAB Structure with  
Complete Interiors.





## TOLL BOOTH



## CENTRAL GOVERNMENT PROJECT WITH 100MM PUT PANELS AS WALL CLADDING



## FOLDABLE CONTAINERS OFFICE



# FASTEST GROWING INDUSTRIES

## SEGMENTS



REAL ESTATE



INFRASTRUCTURE



RESIDENCE &  
COMMERCIAL COMPLEX



TEMPLES



AIR PORTS



COLLAGE



RAILWAY STATIONS



HOSPITAL



SCHOOL



PHARMACEUTICAL



RELIGIONS



PAPER



MARINE



PORTS



GOVERNMENT  
ORGANIZATIONS



COMMERCIAL  
COMPLEX



RESORTS



INDUSTRIES



HOTELS



BUS STATION



A UNIT OF



**EVEREST COMPOSITES PVT. LTD.**  
Block No. 15, Lamdapura Village,  
Ta. Savli, Dis. Vadodara, Gujarat,  
India-391775.

**M :** +91 99099 18288, +91 9978992929  
**W :** [www.everestcomposites.com](http://www.everestcomposites.com)  
**E :** [info@everestfibre.com](mailto:info@everestfibre.com)

#### Disclaimer

The information contained within this catalogue and the functions offered are intended to, provide information about products available for purchase from Everest Composites Pvt. Ltd. All reasonable efforts have been made to ensure the accuracy of the information, however, Everest cannot be held responsible for any errors. Everest does not warrant the accuracy and reserves the right to make changes to this catalogue and its functions at anytime without notice.