



# EVEREST COMPOSITES PVT. LTD

## GRC (GFRC)

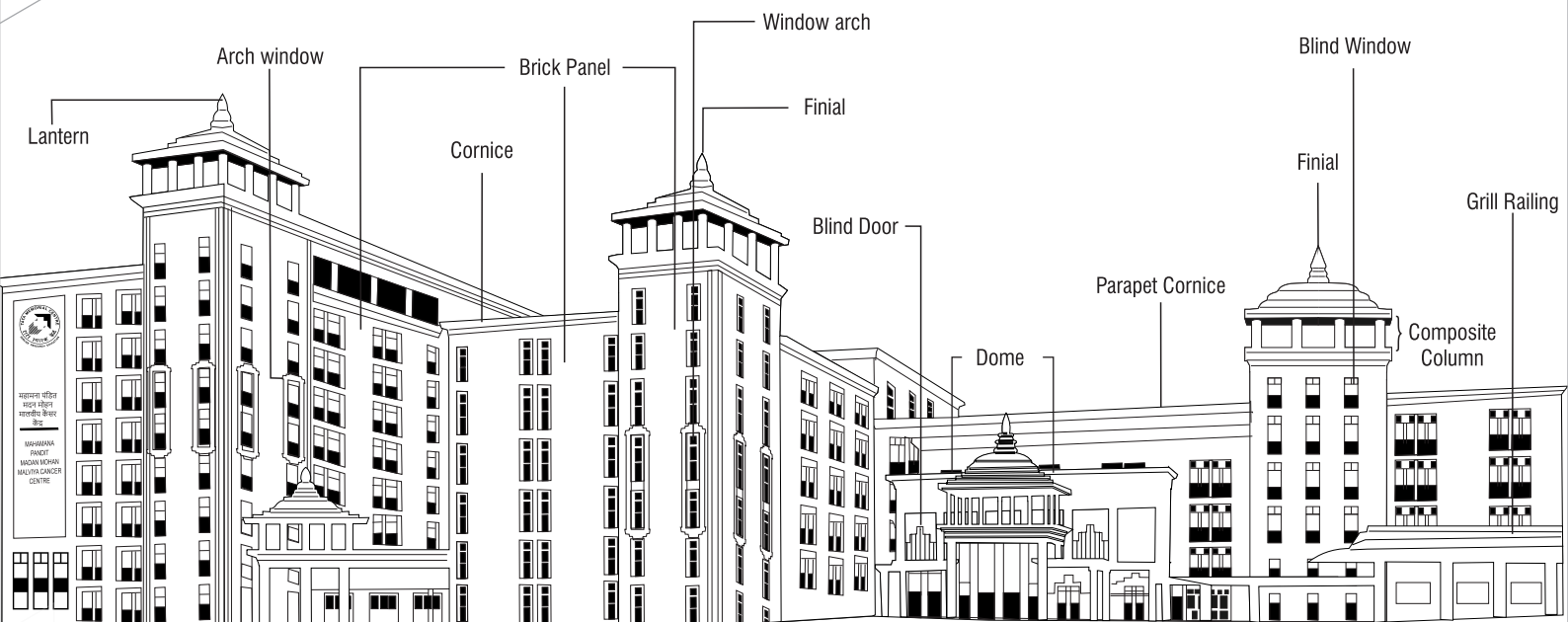
GLASSFIBRE REINFORCED CONCRETE

HIGHLY DURABLE & ECO-FRIENDLY  
ARCHITECTURAL EXTERIOR CLADDING



### 3 DECADES

*Redefining Construction*



CONCEPT TO EXECUTION

[everestgrc.com](http://everestgrc.com) | [everestcomposites.com](http://everestcomposites.com)



## ECPL

GLASSFIBRE  
REINFORCED  
CONCRETE



## EVEREST INTRODUCTION

**Everest Composites Pvt. Ltd. (ECPL) is involved in the manufacturing of composites products since 1991.** ECPL is known for its strong technological capability and adaptability that are required to meet the constantly changing prerequisites of client. Everest is the only company with such a diverse production line under one roof.

### OUR DIVISIONS

- ▶ EVEREST GRC / GFRC
- ▶ EVEREST FRP / GRP
- ▶ EVEREST PREFAB
- ▶ FRP DOORS
- ▶ PPGI ROOFING SHEETS
- ▶ EVEREST FACADE & INFRASTRUCTURE

### TURNKEY (SOLUTIONS PROVIDER)

- ▶ DESIGN
- ▶ FABRICATION
- ▶ MANUFACTURING
- ▶ INSULATIONS
- ▶ COMPLETE FACADE EXECUTIONS



EXPERIENCED  
TEAM



RELIABLE & SECURE  
SERVICES



BEST  
VALUE PRODUCTS



25 YEARS  
EXPERIENCE

## OUR ASSOCIATIONS

**IIID**  
Indian Institute of Interior Designer

**CREDAI**  
Confederation of Real Estate  
Developers Association of India

**BAI**  
Builder Association of India

**RCBS**  
Rotary Club of Sayjinagari Vadodara  
(3016)

**IPUA**  
Indian Polyurethane Association

**JITO & JBN**  
Jain International Trade Organization

**BNI**  
Business Network International

**FGI**  
Federation of Gujarat Industries

## CERTIFICATE



TATA CHEMICAL



RIAI- ROYAL INSTITUTE OF THE  
ARCHITECTS OF IRELAND) -2018



TATA TRUST



DIVYA BHASKAR





ENVIRONMENT  
FRIENDLY  
PRODUCTS

MAINTENANCE  
FREE

EXCELLENT  
EDGE AND  
CORNER  
STRENGTH

IMPROVED  
SURFACE DETAILS  
AND QUALITY  
FINISH

## COMPOSITES PRODUCTS WITH CAPACITY

### GRC

(GLASSFIBRE  
REINFORCED  
CONCRETE)

CAPACITY

More than  
**7,50,000 Sq. Ft.**  
Per Annum

### FRP SHEETS

(FIBRE  
REINFORCED  
PLASTICS)

CAPACITY

More than  
**4,20,000m<sup>2</sup>**

Per Annum  
(CLM : continuous  
laminating machine)

### FRP

(MOULDING)

CAPACITY

More than  
**1,00,000m<sup>2</sup>**

Per Annum

### PREFAB & PUF PANEL

CAPACITY

More than  
**2,00,000 Sq. Ft.**

Per Annum

New facility under construction, currently using partial constructed facility for production

**2 LAKH**  
SQ.FT. LAND

**60K +**  
MANUFACTURING AREA

3D IMAGE

**ONE OF THE LARGEST &  
FINEST MANUFACTURING  
GRC PLANT**

**300+**  
Projects executed  
pan India.

**250+**  
Corporate  
Clients



**ACTUAL PLANT**

## GRC INTRODUCTION

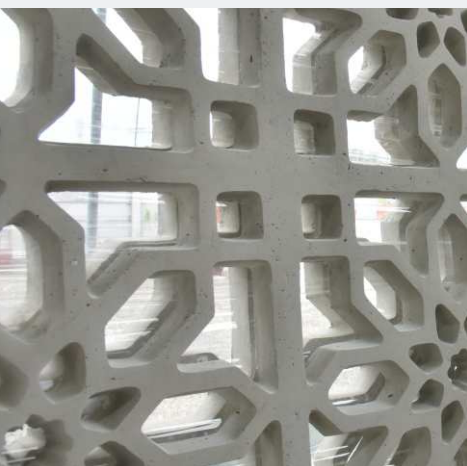
- >> Glassfibre Reinforced concrete (GRC) is one of the most versatile building materials available to architects and engineers.
- >> Glass fibre Reinforced Concrete is a composite material made of cement, fine aggregates, water, chemical admixtures and alkali resistant (AR) Glass Fibers, which can be engineered to suit a wide range of applications.
- >> GRC is also most suitable for seismic regions as GRC has a tendency to bend and not crack under seismic conditions
- >> Developed in the twentieth century, GRC has been making a significant contribution to the economics, technology, and aesthetics of modern construction worldwide for over 40 years.
- >> GRC is very versatile and can be suitably moulded into wide variety of complex shapes and profiles.

## GRC - CONSTRUCTION INDUSTRY ADVANTAGES

Light Weight	Easy Fixing	High Impact Resistance
High Strength	No Steel reinforcement	Durable
No Health Risk	Choice of Colour / Texture	

## KEY FEATURES

- GRC Products are easy to handle and fast to erect.
- GRC is easily molded to reproduce shapes, details and textures
- GRC can be cast into fine details design of thin cladding elements
- GRC can be coloured with pigments, paints and neutral stone facings
- GRC offers designers unrivaled flexibility
- GRC does not suffer from corrosion & environmentally friendly
- GRC is durable against extreme weather conditions
- GRC offers a wide variety of shapes and surfaces finishes







## WHY EVEREST GRC?

Sophisticated Plant, Machinery and Equipments imported from England.



Pioneers in manufacturing GRC in india with 25 years of experience in various buildings & constructions materials

## GRC BENEFITS

Faster Installation

Significant savings in superstructure and foundations

Allows grater lengths, reduced number of supports and thin sections

Hard and dense surface offers

So, no electromagnetic interference with signaling cables

Needs low Maintenance Never rots or corrodes

Various surface finishes and shades such as plain or sand stone, striped granite, oak finish, stonewall and acid wash can be obtained.



AR glass fibre is irrespirable unlike asbestos fibre

Avoids all problems of wet fixed cladding. Can be drying fixed with stainless steel / M.S. Fixtures.

## TYPICAL PROPERTIES OF GRC ( AT 28 DAYS )

PROPERTY	UNIT	MACHINE SPRAY	VIBRATION CAST
Glassfibre (AR)	(WT.%)	2.5 to 5 depending upon component of GRC	3
Flexural Strength	MPA	6-18	4-7
Compressive Strength	MPA	30-50	40-60

## Raj victoria - Surat - 2016

3D IMAGE



BEFORE



AFTER



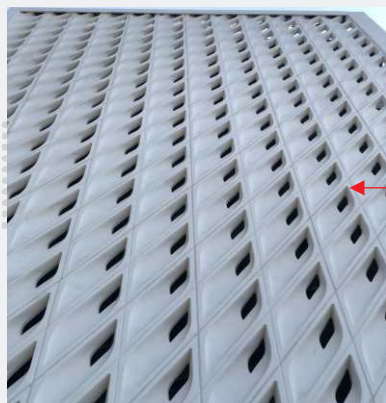
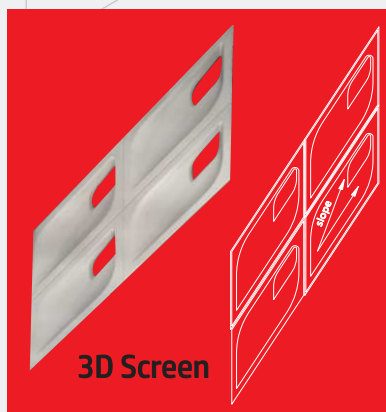
GRC Work of  
40,000 Sq. Ft.

## School project - Pune - 2019

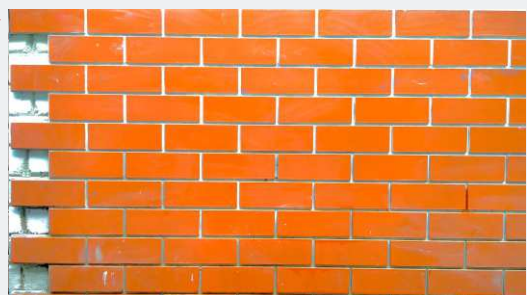




## Corporate office - Valsad - 2019



## Tata trust cancer hospital - Varanasi - 2019



Tata Trust Cancer  
Hospital At BHU  
Varansi Approx.  
280000 sq.ft.





## Thapar university - Patiala - 2018

INTERNATIONAL AWARD WINNING PROJECT



THAPER UNIVERSITY  
BOY'S HOSTEL  
Milestone 3,00,000



BEFORE

## KP Luxuria - Vadodara - 2015



## Resort - Bhuj - 2012





## Kalpavriksh - Ahmadabad - 2016



WIP

AFTER



## GRC WINDOW FRAME



## Lillieria banquet - Vadodara - 2017



## Privilon - Ahmadabad - 2017



GRC C&U CHANNEL

**GRC FRAME Till 26th Floor  
Single Piece of GRC Weight  
300 Kg Successfully  
Installed**



**Vivanta - Surat - 2019**



**Heritage - Vadodara - WIP**



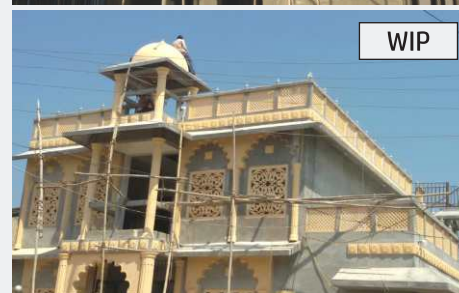
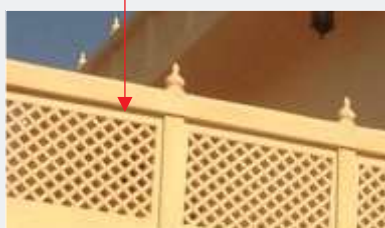
**Talasan - Ambaji - 2013**



AFTER



BEFORE



WIP

GRC Work of  
25,000 Sq. Ft.

**Taiba masjid - Surat - 2013**





## Zion - Surat - 2015



## Faradio 350 villa - Surat - 2019



## Patel villa - Bakrol - Anand - 2014





**National high speed rail corporation ltd. - Training Institute - VADODARA - 2020**



**Western railway station - Vadodara - 2020**





**Utalika - Ambuja - Neotia  
Kolkata - 2019**



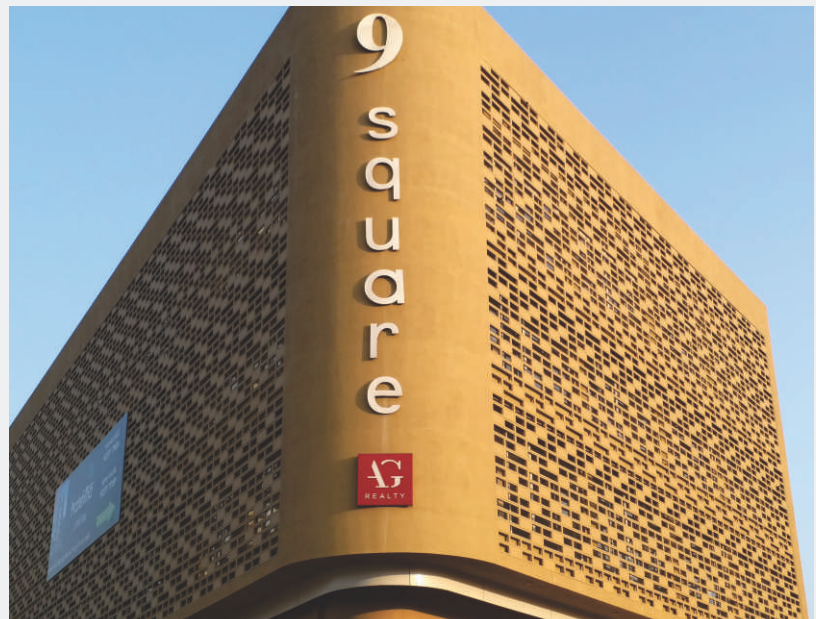
**ATC - Mauritius - WIP**



**Ashoka - Vadodara - 2019**



**9-Square - Rajkot - 2016**







EVEREST GRC  
MANUFACTURING FACILITY  
**(PRODUCTION UNIT )**









# FASTEST GROWING INDUSTRIES

## SEGMENTS



REAL ESTATE



INFRASTRUCTURE



RESIDENCE &  
COMMERCIAL COMPLEX



TEMPLES



AIR PORTS



COLLAGE



RAILWAY STATIONS



HOSPITAL



SCHOOL



PHARMACEUTICAL



RELIGIONS



PAPER



MARINE



PORTS



GOVERNMENT  
ORGANIZATIONS



COMMERCIAL  
COMPLEX



RESORTS



INDUSTRIES



HOTELS



BUS STATION



A UNIT OF

# EVEREST COMPOSITES PVT. LTD

**EVEREST COMPOSITES PVT. LTD.**  
Block No. 15, Lamdapura Village,  
Ta. Savli, Dis. Vadodara, Gujarat,  
India-391775.

**M:** +91 99789 92929, +91 97129 63230,  
+91 89800 09875

**W:** [www.everestcomposites.com](http://www.everestcomposites.com)

**E:** [grcbusiness@everestfibre.com](mailto:grcbusiness@everestfibre.com)

#### Disclaimer

The information contained within this catalogue and the functions offered are intended to, provide information about products available for purchase from Everest Composites Pvt. Ltd. All reasonable efforts have been made to ensure the accuracy of the information, however, Everest cannot be held responsible for any errors. Everest does not warrant the accuracy and reserves the right to make changes to this catalogue and its functions at anytime without notice.